

DAILY DIRECT HOGS PLANT DELIVERED as of 1:30 PM

Negotiated Barrow and Gilt:	Carcass Base Price	Live Price
<u>NATIONAL - AMS 2675/LM_HG203:</u>		
Range:	\$76.00 \$86.00	* *
Weighted Average:	\$85.04	*
Change from Prior Day:	\$2.55	*
Head Count:	3,125	734

<u>IOWA/MINNESOTA - AMS 2675/LM_HG206:</u>		
Weighted Average:	\$85.37	*
Change from Prior Day:	\$1.80	*

<u>WESTERN CORNBELT - AMS 2675/LM_HG212:</u>		
Weighted Average:	\$85.20	*
Change from Prior Day:	\$2.22	*

<u>EASTERN CORNBELT - AMS 2675/LM_HG210:</u>		
Weighted Average:	*	*
Change from Prior Day:	*	*

*Price not reported due to confidentiality.

NATIONAL DAILY PORK REPORT FOB PLANT - AMS 2498/LM_PK602:

Carcass Cutout Values	94.60	Change:	(-0.08)
Primal Loin	80.01		(-1.22)
Primal Butt	105.83		(-2.01)
Primal Picnic	75.61		4.66
Primal Rib	153.76		(-4.54)
Primal Ham	89.16		2.45
Primal Belly	134.51		(-5.31)
Total Loads	292.40		
Pork Cuts	251.32	Lds	
Trim/Process Pork	41.08	Lds	

DAILY HOG SLAUGHTER UNDER FIS - AMS 3208/SJ_LS710

Today (est)	488,000
Week Ago (est)	489,000
Year Ago (act)	448,525
Week to Date (est)	1,466,000
Same Period Last Week (est)	1,436,000
Same Period Last Year (act)	1,425,532

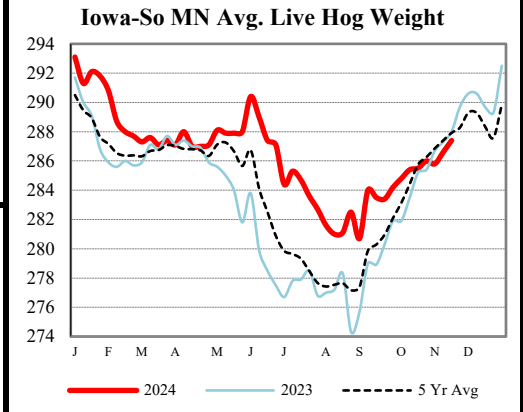
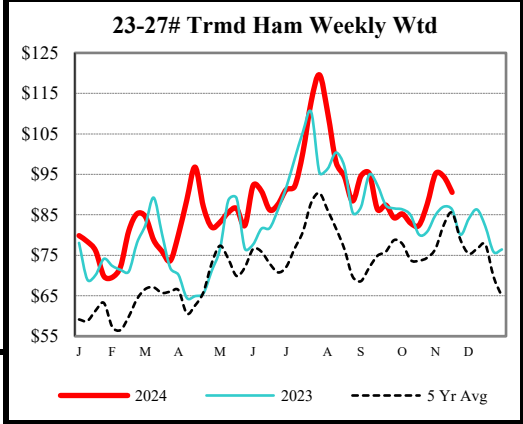
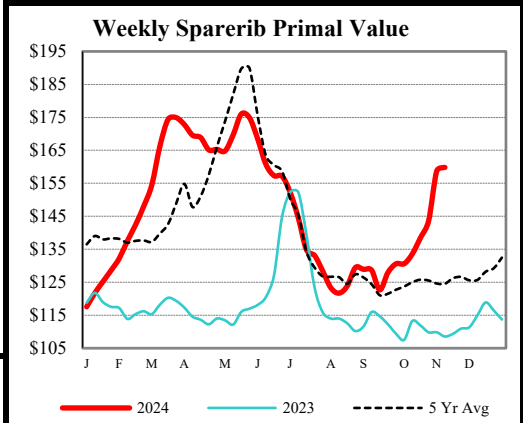
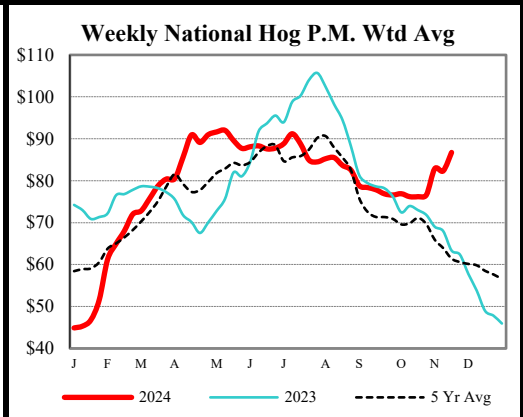
National Daily Direct Hog Prior Day Report - Slaughtered Swine - AMS 2511/LM_HG201

Producer Sold:	NEG	OMF	SPMF	OPA	Total
Head Count	3,458	30,735	136,173	70,909	241,478
Carcass Base Price	86.88	74.60	86.35	85.00	84.53
Average Net Price	86.73	77.6	87.71	86.73	86.17

Negotiated Formula included in total *Price not reported due to confidentiality.

IOWA-SOUTHERN MINNESOTA WEEKLY AVERAGE WEIGHT - AMS 2840/NW_LS720

For Week Ending Sat,	Head	Average
Nov 16, 2024	Count	Weight
	853,000	287.4
Week Ago:	822,000	286.6
Year Ago:	905,000	288.0



USDA Livestock, Poultry & Grain Market News
 Des Moines, Iowa | PH 515-284-4460
 Email: Desm.LPGMN@usda.gov
<https://mymarketnews.ams.usda.gov/viewReport/2872>
 USDA AMS Livestock, Poultry & Grain Market News