

# National Weekly Cattle And Beef Summary

Des Moines, Iowa  
For Week Ending:

Mon Nov 18, 2024  
11/15/2024

USDA Livestock, Poultry & Grain Market News

This Week Prior Week Last Year

## LM XB463

### NATIONAL COMPREHENSIVE BOXED BEEF

CUTOUT VALUES	307.96	311.45	292.53
Primal Rib	557.13	547.25	509.66
Primal Chuck	252.09	265.31	242.46
Primal Round	250.81	260.92	247.82
Primal Loin	392.09	384.01	374.26

## WEEKLY COMPREHENSIVE ITEM SUMMARY

Select & Choice Spot Market Loads	624
Comprehensive Loads	3721
CH&SE Percent of the Comprehensive	17%

### LMR Cattle Purchase Type Breakdown

2024 Q3	National	5-Area	TX/OK/NM	KS	NE	IA
<b>Negotiated</b>	17.1	17.2	5.2	8.3	22.3	52.2
<b>Formula</b>	66.4	68.6	88.3	82.1	56.8	20.3
<b>Forward Contract</b>	5.4	3	0.9	0.9	4.9	8.7
<b>Negotiated Grid</b>	11.1	11.2	5.6	8.8	16.1	18.8

[National Weekly Fed Cattle Comprehensive Report](#)  
[National Weekly Fed Cattle Comprehensive CSV Report](#)

## LM CT 169

### DIRECT CATTLE PREMIUM AND DISCOUNTS

Prime	19.80	19.80	18.31
Choice	0.00	0.00	0.00
Select	(26.53)	(26.95)	(27.60)
Standard	(39.03)	(39.46)	(39.85)
CAB	5.02	5.02	5.21

## LM CT 150

### 5 AREA WEEKLY WEIGHTED CATTLE PRICE

Live Steer	184.79	186.53	177.82
Live Heifer	184.90	186.82	177.79
Dressed Steer	290.84	293.13	281.42
Dressed Heifer	290.65	294.22	281.77

## NW LS441

### USDA BY-PRODUCT DROP VALUE (STEER)

	11.15	11.01	12.50
--	-------	-------	-------

## SJ LS712

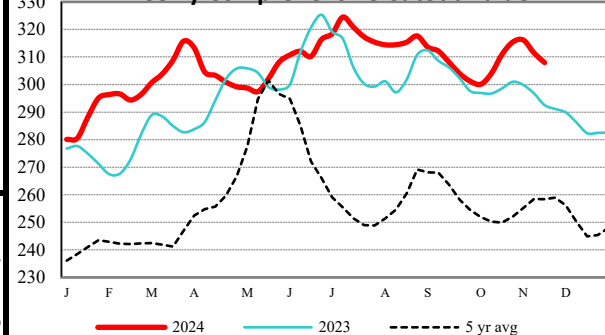
### WEEKLY ESTIMATED BEEF PRODUCTION

11/15/2024	(Estimate)	(Estimate)	(Actual)
Slaughter	606,000	619,000	639,000
Live Weights	1425	1423	1388
Dressed Weights	869	868	839
Beef Production (mil lbs)	525.6	536.4	535.4

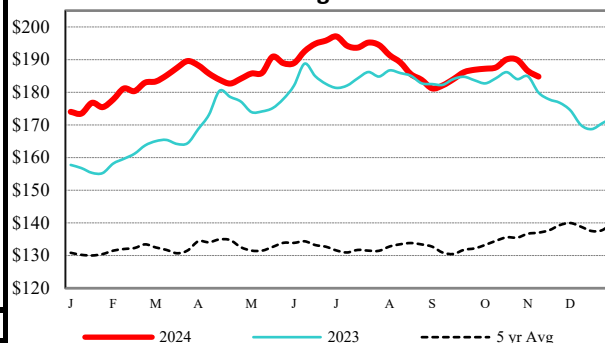
LMR CH & up Grading %, Weights, and Dressing % (Formula, Forward Contract & Grid Net Purchases Based on State of Origin for WE today)

Beef Type Str/Hfr:	Grading	Carcass Wt	Dressing
TX/OK/NM	73.48%	878.0	64.16%
Kansas	81.43%	934.9	64.19%
Nebraska	85.71%	943.1	63.74%
Colorado	81.02%	923.7	63.55%
IA/MN	89.41%	960.4	63.20%
<b>Dairybred Str/Hfr:</b>			
National	87.11%	855.1	60.43%

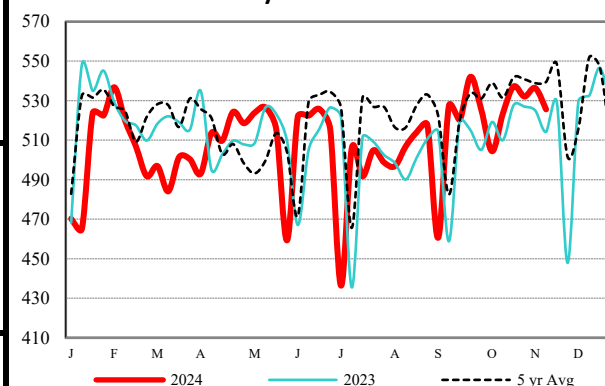
### Weekly Comprehensive Cutout Value



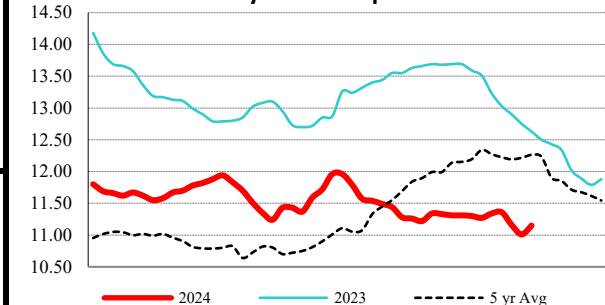
### 5 Area Weekly Wtd Avg Steer Price



### Weekly Beef Production



### Weekly Steer Drop Value



### USDA Livestock, Poultry & Grain Market News

Des Moines, Iowa

Phone: 515-284-4460

Email: [desm.lgmn@usda.gov](mailto:desm.lgmn@usda.gov)

[www.ams.usda.gov/LSMarketNews](http://www.ams.usda.gov/LSMarketNews)