

Email us with accessibility issues with this report.

Report For: 11/4/2024 to 11/29/2024

Chicken, Whole - Cents Per Lb

Domestic - Fresh - Conventional - Delivered

	<u>Current Months Trading</u>				<u>Previous Months Trading</u>	
	<u>Price Range</u>	<u>Wtd Avg</u>	<u>Change</u>	<u>1,000 lbs</u>	<u>Wtd Avg</u>	<u>1,000 lbs</u>
National Composite Whole Bird:	89.00 - 155.00	128.86	-0.06	42,046	128.92	49,435
WOG Trading by Size:						
National Composite WOGS:	89.00 - 155.00	127.70	0.02	31,701	127.68	38,178
2.50 LB and lighter	104.00 - 153.00	138.50	2.37	6,309	136.13	11,692
2.51 to 3.50 LB	90.00 - 155.00	126.64	1.58	23,267	125.06	24,739
3.51 LB and heavier	89.00 - 139.00	107.30	-0.91	2,125	108.21	1,746
Whole Body Trading by Size:						
National Composite:	106.00 - 155.00	132.42	-0.69	10,344	133.11	11,256
3.00 LB and Lighter	111.00 - 138.00	134.86	-0.93	2,977	135.79	3,045
3.01 LB and heavier	106.00 - 155.00	131.44	-0.68	7,366	132.12	8,211
Regional and Specific Destination Pricing:						
Eastern Whole Body:	89.00 - 146.00	126.63	0.73	19,969	125.90	24,709
Eastern WOGS:	89.00 - 146.00	122.95	0.51	12,017	122.44	15,163
New York Whole Body:	109.00 - 146.00	130.25	0.86	9,205	129.39	11,725
Central Whole Body:	90.00 - 145.00	118.49	-2.90	10,371	121.39	10,770
Central WOGS:	90.00 - 145.00	118.46	-2.60	9,354	121.06	10,560
Chicago Whole Body:	90.00 - 145.00	118.06	-4.75	6,836	122.81	5,519
Western Whole Body:	100.00 - 155.00	141.87	1.81	11,705	140.06	13,955
Western WOGS:	100.00 - 155.00	141.60	1.92	10,330	139.68	12,455
Los Angeles Whole Body:	112.00 - 155.00	143.48	1.83	7,860	141.65	9,540

Source: USDA AMS Livestock, Poultry & Grain Market News

Des Moines, IA | (515)284-4460 |

<https://www.ams.usda.gov/lpgmn>

<https://mymarketnews.ams.usda.gov/> | <https://mymarketnews.ams.usda.gov/viewReport/3649>

Email us with accessibility issues with this report.

Chicken, Parts - Cents Per Lb

Domestic - Fresh- Conventional - FOB

	<u>Current Months Trading</u>				<u>Previous Months Trading</u>	
	<u>Price Range</u>	<u>Wtd Avg</u>	<u>Change</u>	<u>1,000 lbs</u>	<u>Wtd Avg</u>	<u>1,000 lbs</u>
Backs and Necks Stripped:	12.00 - 14.00	12.33	0.07	4,514	12.26	6,168
Breast - B/S:	110.00 - 180.00	148.11	-5.41	10,148	153.52	11,527
Breast - Line Run:	104.00 - 109.00	107.32	-0.03	410	107.35	505
Breast With Ribs:	117.00 - 152.00	136.88	-1.26	440	138.14	427
Drumsticks:	42.00 - 60.00	47.67	0.06	1,744	47.61	2,304
Frames:	6.00 - 10.00	8.40	0.74	6,920	7.66	7,960
Gizzards and Hearts:	74.00 - 87.00	79.13	0.73	519	78.40	645
Leg quarters - Bulk:	40.00 - 61.00	51.62	-0.15	5,765	51.77	7,090
Legs - Bone-in:	65.00 - 80.00	69.85	-1.75	1,784	71.60	2,052
Livers:	63.00 - 67.00	64.55	0.50	446	64.05	522
MSC, 15-20% Fat Content:	24.00 - 27.00	25.55	-0.11	2,019	25.66	2,101
Tenderloins:	146.00 - 197.00	167.02	-23.75	4,829	190.77	5,817
Thighs - B/S:	150.00 - 188.00	160.16	-21.96	3,493	182.12	4,359
Thighs - Bone-in:	94.00 - 99.00	94.66	-1.46	133	96.12	136
Wings - Whole:	175.00 - 208.00	189.09	-15.46	3,234	204.55	3,683

Export - Fresh- Conventional - FOB

	<u>Current Months Trading</u>				<u>Previous Months Trading</u>	
	<u>Price Range</u>	<u>Wtd Avg</u>	<u>Change</u>	<u>1,000 lbs</u>	<u>Wtd Avg</u>	<u>1,000 lbs</u>
MSC, 15-20% Fat Content:	23.00 - 27.00	24.85	-1.32	265	26.17	244

Export - Frozen- Conventional - FOB

	<u>Current Months Trading</u>				<u>Previous Months Trading</u>	
	<u>Price Range</u>	<u>Wtd Avg</u>	<u>Change</u>	<u>1,000 lbs</u>	<u>Wtd Avg</u>	<u>1,000 lbs</u>
Breast - B/S:	142.00 - 147.00	143.13	1.63	1,212	141.50	432

Source: USDA AMS Livestock, Poultry & Grain Market News

Des Moines, IA | (515)284-4460 |

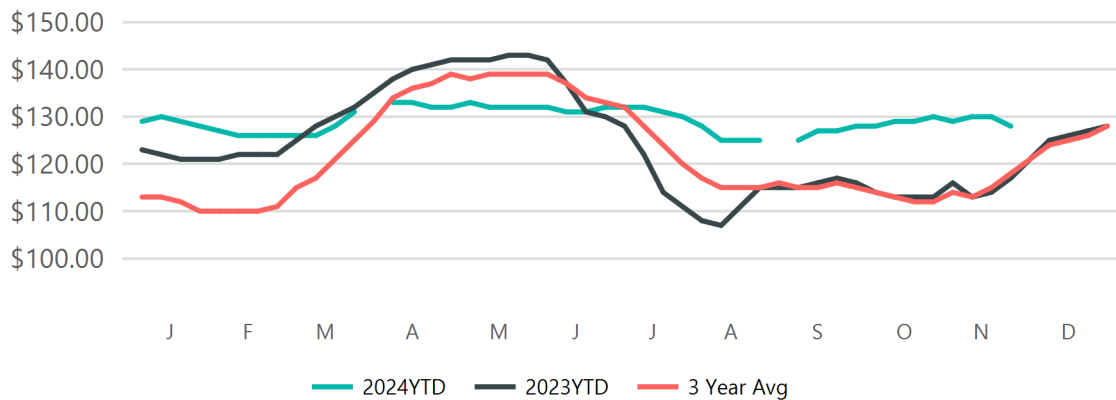
<https://www.ams.usda.gov/lpgmn>

<https://mymarketnews.ams.usda.gov/> | <https://mymarketnews.ams.usda.gov/viewReport/3649>

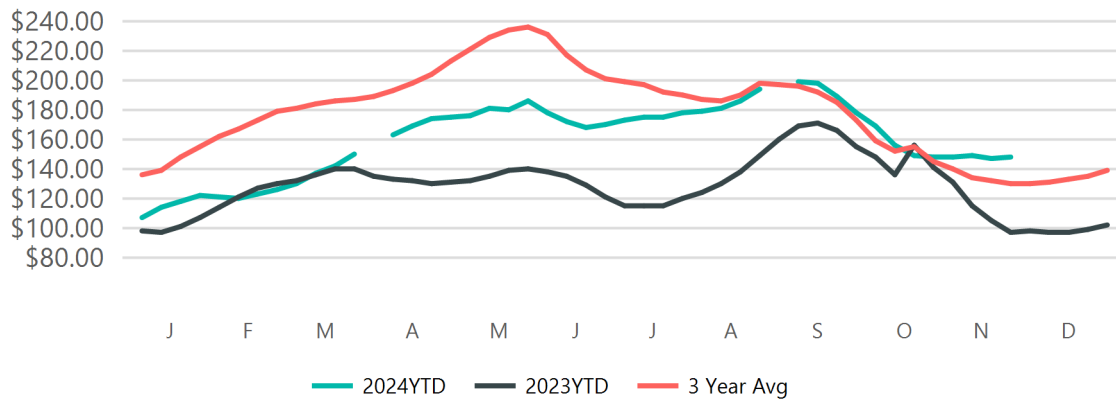
Email us with accessibility issues with this report.

Drumsticks:	48.00 - 56.00	53.40	-0.53	4,344	53.93	1,890
Leg quarters - Bulk:	46.00 - 56.00	52.42	1.72	21,038	50.70	7,330
Legs - Bone-in:	60.00 - 64.00	60.86		2,754		
MSC, 15-20% Fat Content:	32.00 - 37.00	34.40	0.64	2,156	33.76	2,983

Fresh National Composite Whole Bird Price - Conventional - Delivered



Fresh National Boneless Skinless Breast, Jumbo Price - Conventional - FOB



Source: USDA AMS Livestock, Poultry & Grain Market News

Des Moines, IA | (515)284-4460 |

<https://www.ams.usda.gov/lpgmn>

<https://mymarketnews.ams.usda.gov/> | <https://mymarketnews.ams.usda.gov/viewReport/3649>