

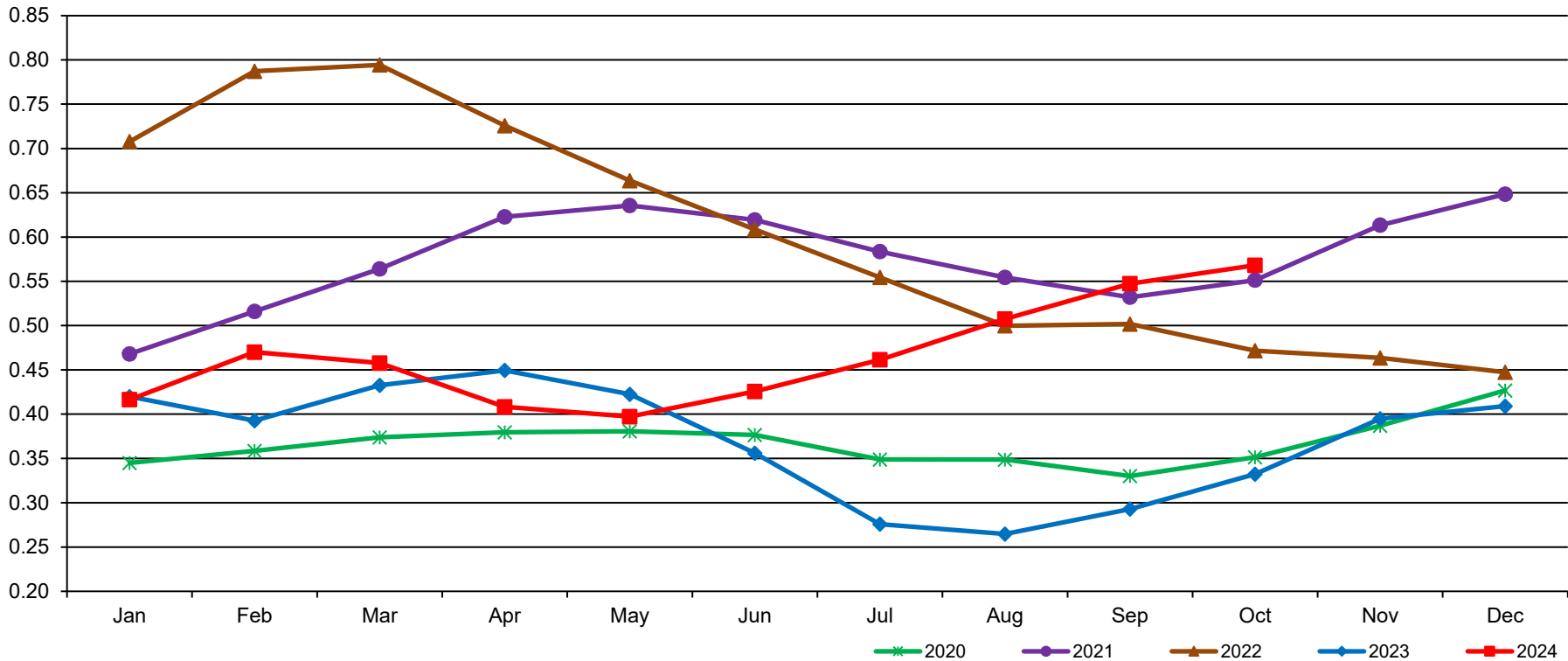
Northeast U.S. Dry Whey Monthly Average Prices

	Jan	Feb	Mar	Apr	May	Jun	Jul	Aug	Sep	Oct	Nov	Dec
2020	0.3449	0.3585	0.3738	0.3795	0.3806	0.3765	0.3489	0.3487	0.3302	0.3514	0.3870	0.4268
2021	0.4680	0.5160	0.5640	0.6228	0.6356	0.6193	0.5835	0.5544	0.5320	0.5513	0.6134	0.6484
2022	0.7078	0.7872	0.7944	0.7257	0.6637	0.6086	0.5545	0.4998	0.5018	0.4717	0.4635	0.4474
2023	0.4198	0.3926	0.4326	0.4494	0.4225	0.3560	0.2759	0.2647	0.2929	0.3322	0.3949	0.4091
2024	0.4164	0.4700	0.4577	0.4082	0.3972	0.4257	0.4614	0.5075	0.5474	0.5681		

DATA SOURCE, USDA, AMS, DMN Monthly Averages, released 11/1/2024

PER POUND

Northeast U.S. Dry Whey Monthly Average Prices



GRAPH/SOURCE USDA, AMS, DMN

USDA/AMS/Dairy Market News, Madison, Wisconsin, (608) 422-8587

Dairy Market News website: <https://www.ams.usda.gov/market-news/dairy>

Dairy Market News database portal: <https://mymarketnews.ams.usda.gov/>