

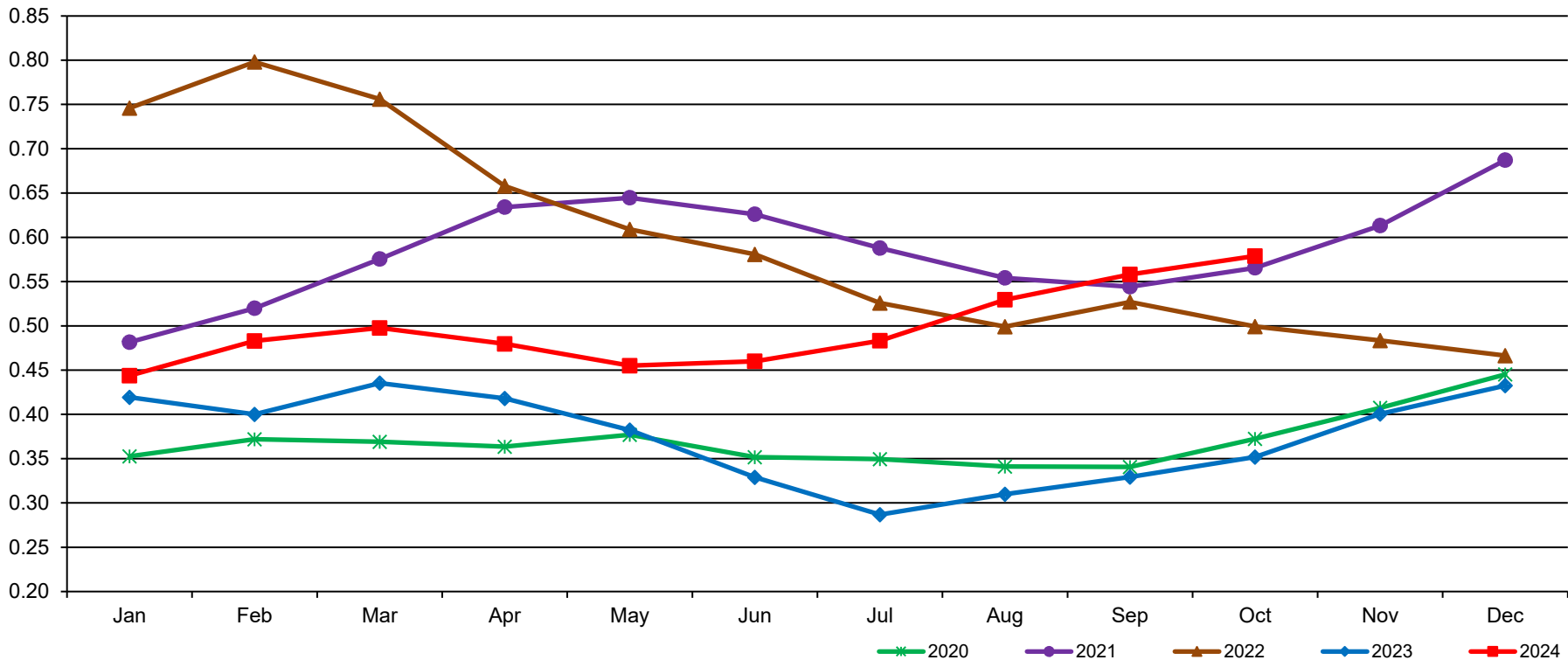
West U.S. Dry Whey Monthly Average Mostly Prices

	Jan	Feb	Mar	Apr	May	Jun	Jul	Aug	Sep	Oct	Nov	Dec
2020	0.3526	0.3720	0.3691	0.3635	0.3770	0.3517	0.3495	0.3412	0.3407	0.3724	0.4074	0.4452
2021	0.4816	0.5199	0.5755	0.6341	0.6447	0.6261	0.5879	0.5542	0.5442	0.5655	0.6133	0.6871
2022	0.7459	0.7980	0.7561	0.6579	0.6090	0.5808	0.5258	0.4991	0.5270	0.4993	0.4835	0.4664
2023	0.4193	0.4001	0.4354	0.4181	0.3823	0.3289	0.2868	0.3098	0.3293	0.3519	0.4005	0.4325
2024	0.4438	0.4830	0.4977	0.4797	0.4550	0.4600	0.4832	0.5295	0.5581	0.5789		

DATA SOURCE, USDA, AMS, DMN Monthly Averages, released 11/1/2014

PER POUND

West U.S. Dry Whey Monthly Average Mostly Prices



GRAPH/SOURCE USDA, AMS, DMN

USDA/AMS/Dairy Market News, Madison, Wisconsin, (608) 422-8587

Dairy Market News website: <https://www.ams.usda.gov/market-news/dairy>

Dairy Market News database portal: <https://mymarketnews.ams.usda.gov/>