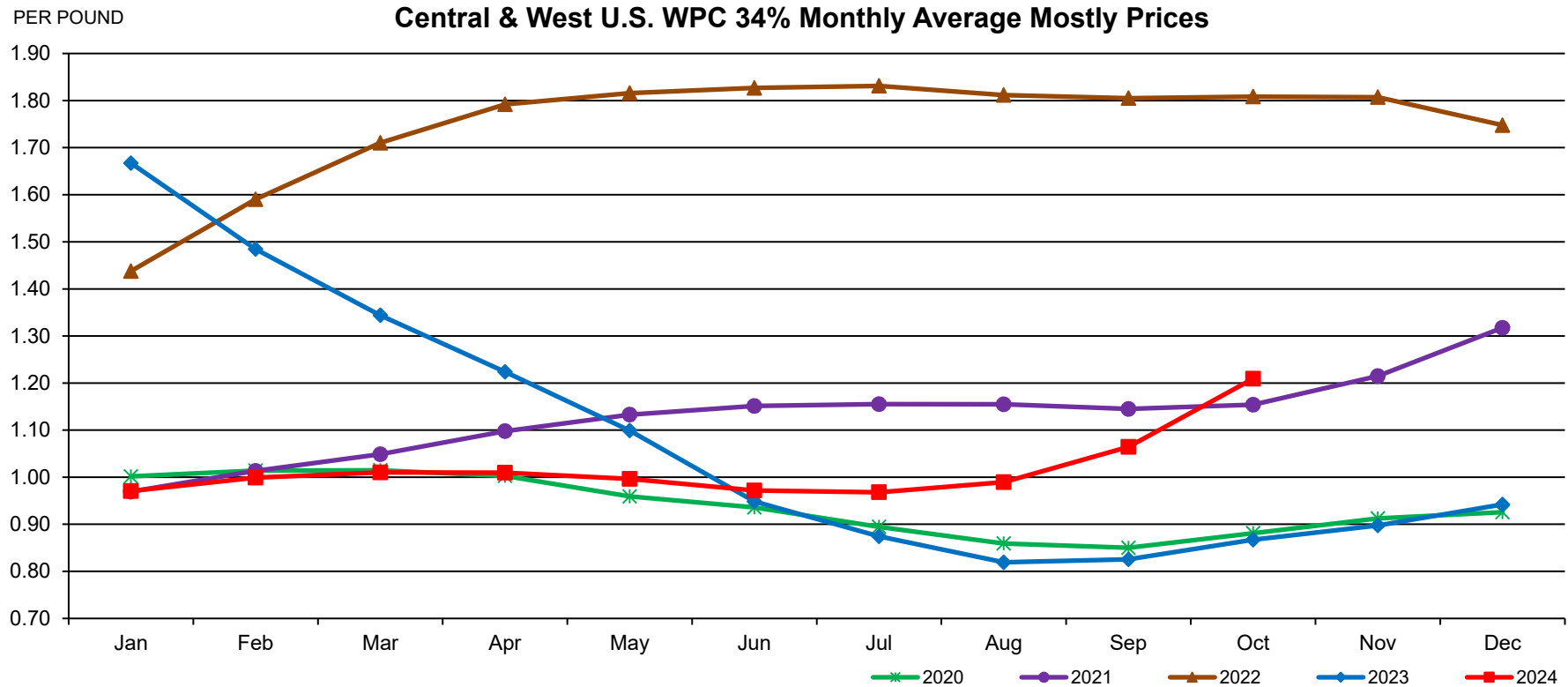


Central & West U.S. WPC 34% Monthly Average Mostly Prices

	Jan	Feb	Mar	Apr	May	Jun	Jul	Aug	Sep	Oct	Nov	Dec
2020	1.0017	1.0140	1.0148	1.0027	0.9590	0.9356	0.8945	0.8591	0.8500	0.8810	0.9124	0.9255
2021	0.9693	1.0134	1.0487	1.0977	1.1328	1.1513	1.1551	1.1548	1.1450	1.1540	1.2149	1.3174
2022	1.4378	1.5904	1.7102	1.7920	1.8160	1.8269	1.8313	1.8118	1.8052	1.8085	1.8073	1.7478
2023	1.6671	1.4846	1.3440	1.2238	1.0989	0.9482	0.8743	0.8191	0.8254	0.8670	0.8974	0.9420
2024	0.9705	0.9990	1.0100	1.0095	0.9963	0.9717	0.9680	0.9893	1.0644	1.2091		

DATA SOURCE, USDA, AMS, DMN Monthly Averages, released 11/1/2024



GRAPH/SOURCE USDA, AMS, DMN
 USDA/AMS/Dairy Market News, Madison, Wisconsin, (608) 422-8587

Dairy Market News website: <https://www.ams.usda.gov/market-news/dairy>
 Dairy Market News database portal: <https://mymarketnews.ams.usda.gov/>