

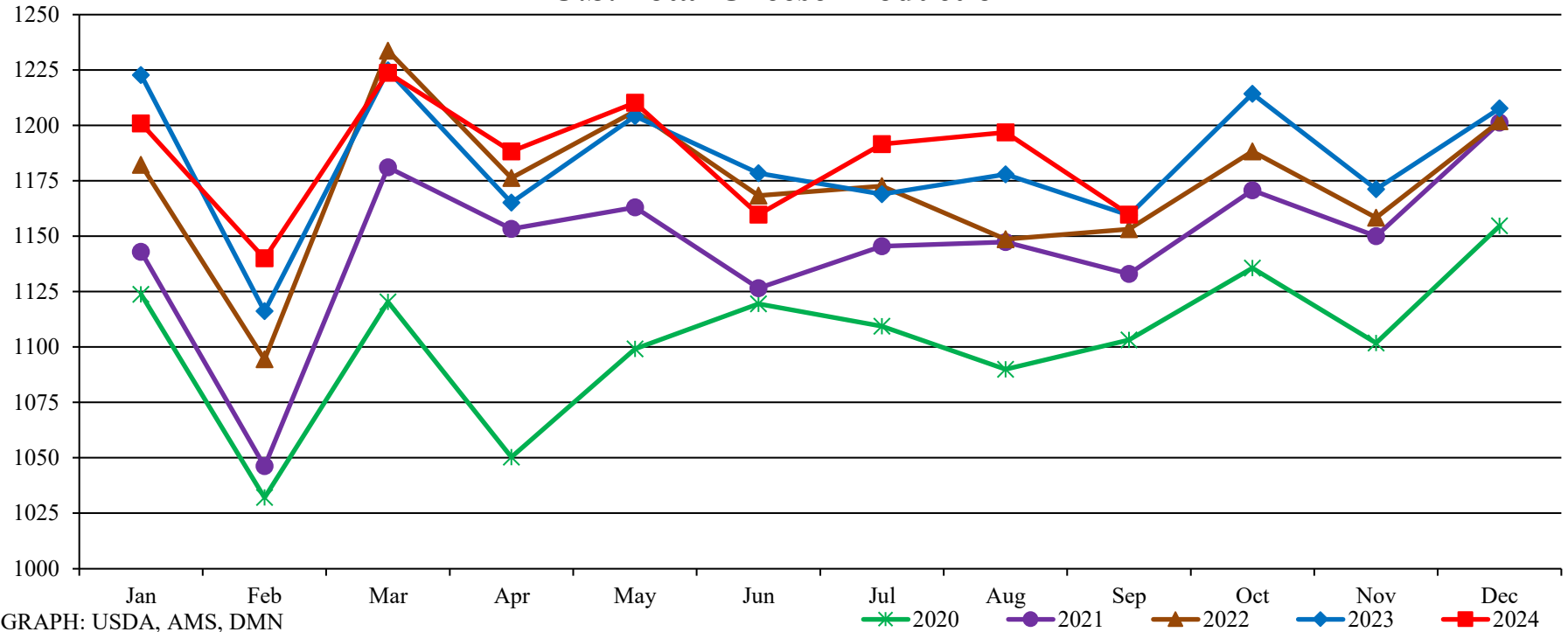
## U.S. Cheese Production (Million Pounds)

Year	Jan	Feb	Mar	Apr	May	Jun	Jul	Aug	Sep	Oct	Nov	Dec
<b>2020</b>	1123.720	1032.048	1120.290	1050.274	1099.121	1119.446	1109.383	1089.981	1103.227	1135.621	1101.813	1154.716
<b>2021</b>	1142.952	1046.237	1181.072	1153.280	1163.075	1126.512	1145.473	1147.331	1133.017	1170.740	1150.063	1201.275
<b>2022</b>	1182.183	1094.459	1233.759	1176.234	1206.490	1168.340	1172.601	1148.642	1153.165	1188.281	1158.392	1201.936
<b>2023</b>	1222.785	1116.128	1224.820	1165.123	1204.162	1178.410	1168.945	1177.853	1159.521	1214.264	1171.266	1207.714
<b>2024</b>	1200.917	1139.985	1223.777	1188.261	1210.254	1159.745	1191.591	1196.864	1159.789	#N/A	#N/A	#N/A

DATA SOURCE, USDA, NASS Dairy Products, released 11/4/2024

MILLION POUNDS

## U.S. Total Cheese Production



GRAPH: USDA, AMS, DMN

USDA/AMS/Dairy Market News, Madison, Wisconsin, (608) 422-8587

Dairy Market News website: <https://www.ams.usda.gov/market-news/dairy>  
 Dairy Market News database portal: <https://mymarketnews.ams.usda.gov/>