

**KANSAS WEEKLY MARKET RECAP**

Recap For Week Ending

November 15, 2024

**Receipts:** This Week: 9,084      Week Ago: 7,636      Year Ago: 9,009

Compared to last week, Feeder Steers sold steady to 5.00 higher with some instances of 10.00 higher on the 600 lbs cattle. Feeder Heifers sold uneven 5.00 lowerto 5.00 higher. Demand was good. Slaughter Cows sold 3.00 higher. Slaughter bulls sold steady. In the hay market, demand remained light, and prices were steady. Buyers are still not buying, but sellers aren't interested to selling at these lower prices, putting the hay market at a standstill. Loads being delivered are to long term customers and hay that was contracted in the summer. Kansas is finally receiving rain, and although it makes things muddy and hard to work in, I think most welcome it to as it will replenish the soil moisture and fill up ponds. According to the U.S. Drought Monitor for November 5th, Significant rains fell over much of Kansas, into southeast Nebraska and southeast Colorado.

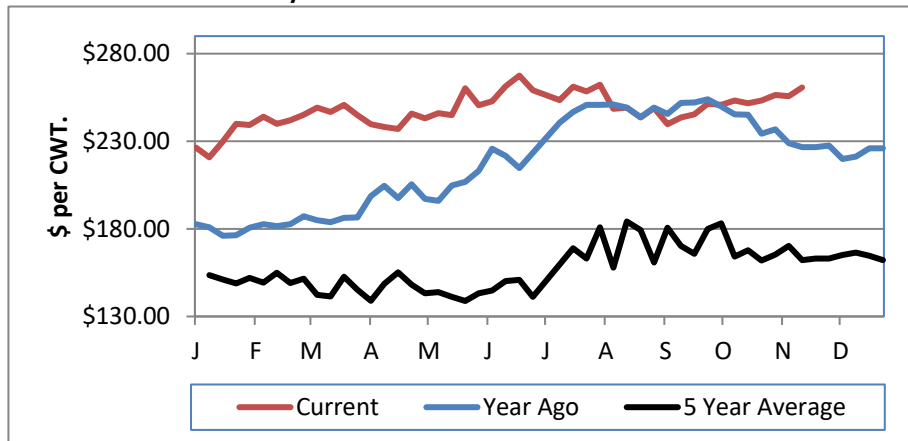
**KANSAS WEEKLY FEEDER CATTLE AVERAGES**

[Cattle Auction Summary](#)

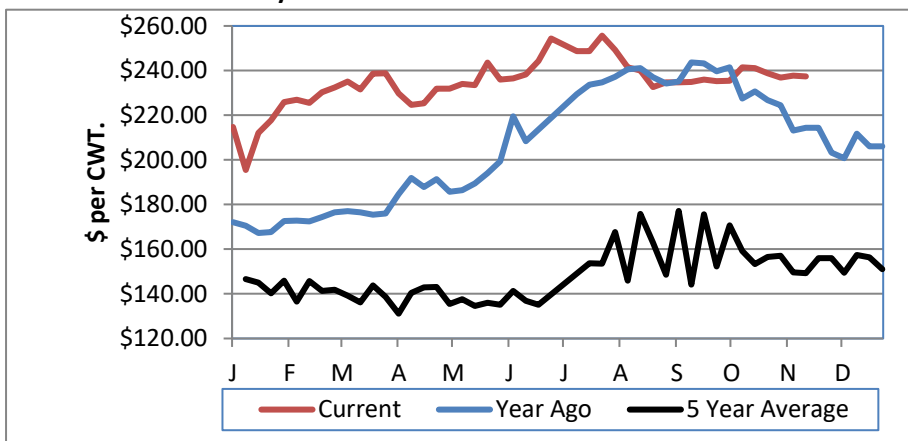
Feeder Steers: M&L 1	This Week	Last Week	Year Ago
400-500 lbs.	\$340.25	\$343.49	\$290.95
500-600 lbs.	\$306.68	\$306.20	\$261.82
600-700 lbs.	\$279.02	\$271.44	\$233.32
700-800 lbs.	\$262.43	\$260.60	\$228.85
800-900 lbs.	\$258.94	\$250.93	\$223.11
900-1000 lbs.	\$250.74	\$246.22	\$215.76

Feeder Heifers M&L 1	This Week	Last Week	Year Ago
400-500 lbs.	\$289.15	\$296.20	\$255.71
500-600 lbs.	\$273.53	\$266.92	\$233.24
600-700 lbs.	\$245.99	\$246.26	\$223.28
700-800 lbs.	\$237.41	\$237.71	\$214.36
800-900 lbs.	\$228.59	\$231.36	\$201.94
900-1000 lbs.	\$211.58	\$217.33	\$182.46

Weekly M&L 1 700-900 lb. Feeder Steer Price



Weekly M&L 1 700-800 lb. Feeder Heifer Price



**KANSAS DIRECT FEEDER CATTLE**

[Fdr Cattle Direct Summary](#)

Medium and Large 1 (Current FOB)	Steers	Heifers
600-700 lbs.	NQ	NQ
700-800 lbs.	NQ	233.00
800-900 lbs.	233.00-251.77	NQ

**KANSAS WEEKLY GRAIN BIDS**

[Kansas Grain Bids](#)

	Terminal Elevators	Country Elevators
US NO 1 HR Winter Wheat	4.8300-5.3650	4.5800-4.9150
US NO 2 Yellow Corn	3.7900-4.2350	4.2400-4.7850
US NO 2 Sorghum	3.6900-4.2850	3.7300-4.1850
US NO 2 Soybeans	9.0750-10.0050	8.7250-9.2550
Sunflower - Oilseeds (country elevators)		NQ
Cotton - West Texas		62.66

**KANSAS WEEKLY SLAUGHTER CATTLE**

[Cattle Auction Summary](#)

Slaughter Cows				
	Dressing	Average	High	Low
Prem White		NQ	NQ	NQ
Breakers		123.37	127.82	NQ
Boners		117.02	139.00	NQ
Lean		104.52	NQ	99.66

Slaughter Bulls			
	Average	High	Low
YG 1-2	140.12	154.50	135.71

**KANSAS WEEKLY ETHANOL BIDS**

[Ethanol Summary](#)

DDG	165.00-190.00
Modified Wet	NQ
Wet	60.00-74.00

**KANSAS WEEKLY HAY PRICES**

[Kansas Hay](#)

	Southwest KS	South Central KS
<b>Alfalfa (Dairy)</b>		
Supreme	165.00	185.00
Premium	177.00	NQ
Ground & Delivered	130.00-170.00	135.00-174.00

**KANSAS WEEKLY WTD AVG SLAUGHTER CATTLE REPORT**

[KS WEEKLY SLAUGHTER CATTLE](#)

	This Week	Last Week	Last Year
Live Str	\$185.03	\$187.07	\$177.77
Live Hfr	\$185.00	\$187.38	\$177.36
Dressed Str	\$290.00	NQ	\$281.00
Dressed Hfr	\$288.00	NQ	NQ

**USDA Livestock Poultry and Grain Market News**

St Joseph, MO  
 Phone: (816) 676-7000  
 Email: stjoe.lpgmn@usda.gov  
<http://www.ams.usda.gov/lpsmarketnewspage>