

NEBRASKA WEEKLY SUMMARY

Recap For Week Ending

January 17, 2025

Receipts: This Week: 52,384 Week Ago: 42,489 Year Ago: 22,673

Compared to last week steers less than 700 lbs sold steady to 4.00 higher, over 700 lbs sold steady to 2.00 lower. Heifers less than 700 lbs sold 2.00 to 7.00 higher, over 700 lbs sold steady to 5.00 higher. Demand was very good throughout the week on a heavy supply of calves and yearlings. Good demand for a light supply of bred cows. Some cattle going to out of state to be wintered for summer grass turnout or finished in a feedlot. Some offerings this week were purchased last fall, weaned and resold as record prices are prevailing the first of the year. Nebraska feedlots sold live sales steady to 2.00 higher from 203.00 to 205.00 and dressed sales sold 2.00 higher at 322.00.

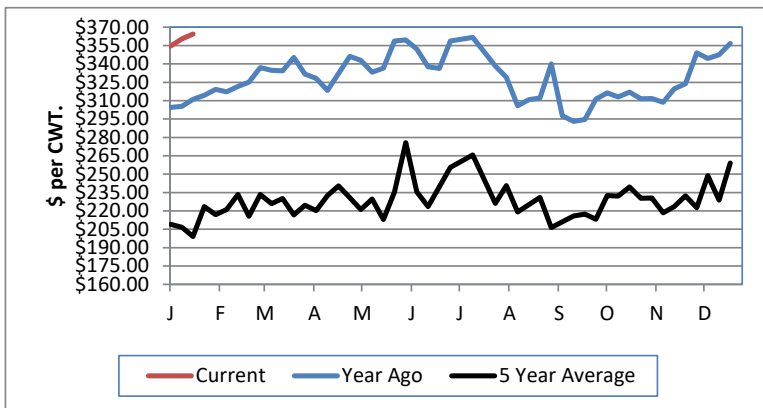
NEBRASKA WEEKLY FEEDER CATTLE AVERAGES

[Auction Summary](#)

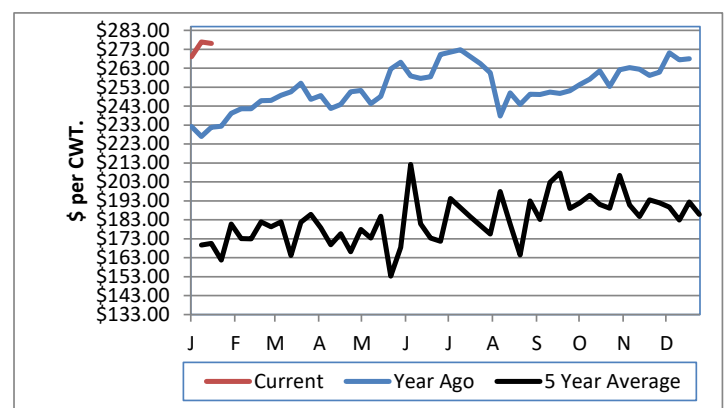
Feeder Steers:	This Week	Last Week	Year Ago
M&L 1			
400-500 lbs.	\$400.60	\$400.62	\$337.56
500-600 lbs.	\$364.41	\$360.49	\$304.49
600-700 lbs.	\$324.57	\$324.61	\$270.73
700-800 lbs.	\$294.43	\$296.46	\$244.64
800-900 lbs.	\$276.17	\$276.88	\$232.21
900-1000 lbs.	\$258.71	\$264.45	\$214.01

Feeder Heifers	This Week	Last Week	Year Ago
M&L 1			
400-500 lbs.	\$360.56	\$353.33	\$299.27
500-600 lbs.	\$326.09	\$322.47	\$277.15
600-700 lbs.	\$292.51	\$289.78	\$251.96
700-800 lbs.	\$269.99	\$269.77	\$225.19
800-900 lbs.	\$250.81	\$249.24	\$205.06
900-1000 lbs.	\$237.50	\$230.00	\$193.56

Weekly M&L 1 500-600 lb. Feeder Steer Price



Weekly M&L 1 800-900 lb. Feeder Steer Price



Nebraska Weekly Hay Prices

[Weekly Hay Report](#)

	Squares	Rounds
Alfalfa		
Premium		100.00-105.00
Good	120.00-140.00	70.00-95.00
	Pellets	
Pellets	250.00-320.00	
Grass		
Premium	SM 8.00	85.00-90.00
Good		85.00-90.00
Fair		60.00-65.00
Ground & Delivered Alfalfa		130.00-135.00
Ground & Delivered Cornstalks		90.00

Nebraska Weekly Grain Prices

[Omaha-Council Bluffs - Changed to IA -Terminal Elevator - Southwest](#)

US NO 2 YELLOW CORN	\$4.59 - \$4.68
US NO 1 SOYBEANS	\$9.76 - \$10.23

Nebraska Ethanol Co-Products

	Price
DDG	160.00-180.00
Modified Wet	72.00-88.00
Wet	48.00-65.00

Nebraska Weekly Weighted Average Cattle Report

[AMS 2485](#)

	This Week	Last Week	Last Year
Live Str	203.76	203.08	173.26
Live Hfr	203.46	202.70	173.00
Dressed Str	322.20	320.22	273.62
Dressed Hfr	322.74	320.00	273.71

USDA Livestock, Poultry and Grain Market News
Nebraska

Thomas Walthers, OIC
Phone: (308) 390-5399
Email: Thomas.Walthers@usda.gov
www.ams.usda.gov/lpsmarketnewspage