

# **U.S. Raisins**

**Crop Years: 2000 through 2022**

**Source: Noncitrus Fruits and Nuts 2022 Summary, NASS, May 2023**

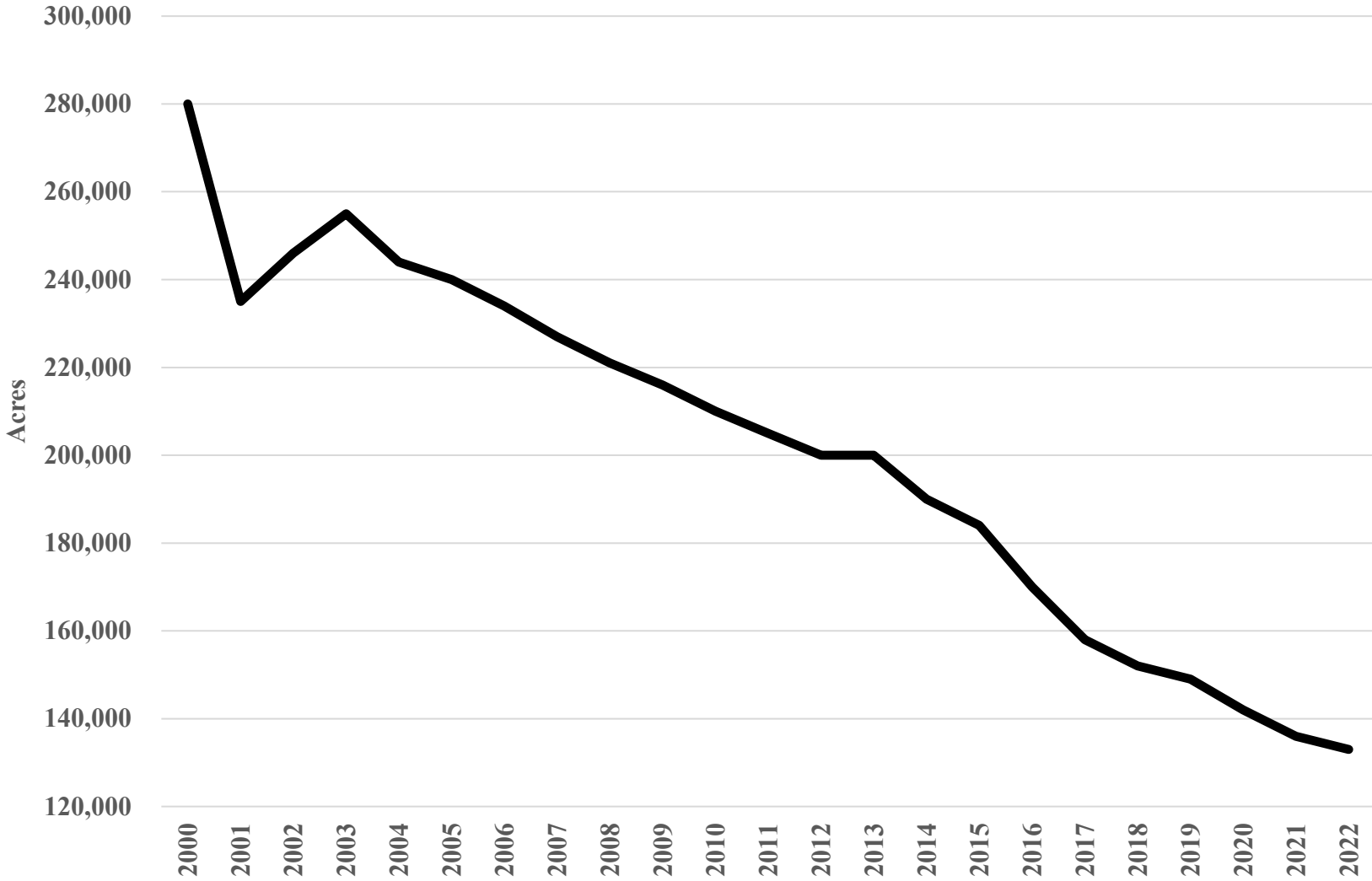
**Marc McFetridge, Economist  
Market Development Division  
Specialty Crops Program, AMS, USDA  
February 13, 2024**

## **Table of Contents**

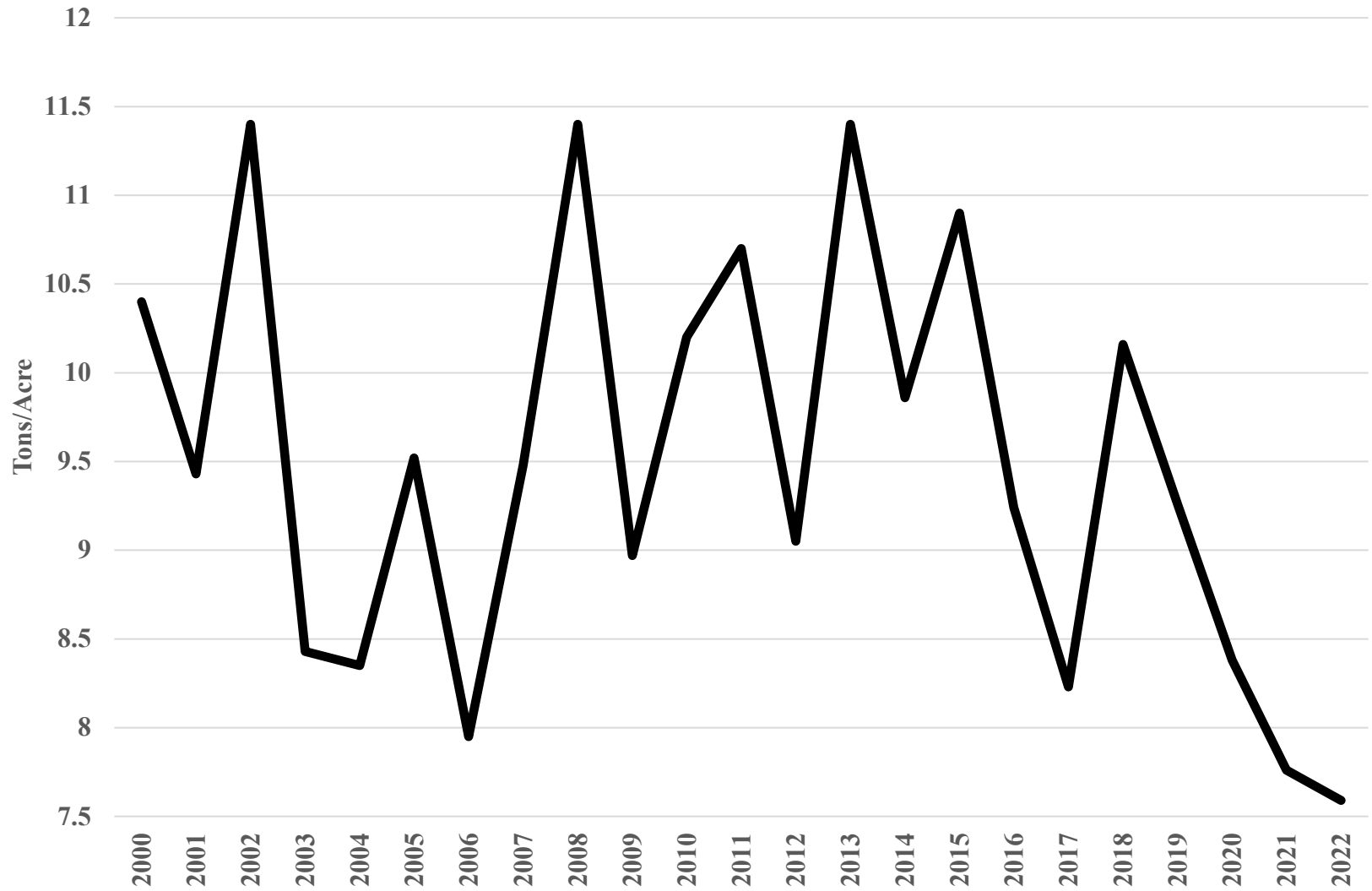
<b>Data Table</b>	<b>3</b>
<b>Bearing Acres</b>	<b>4</b>
<b>Yield</b>	<b>5</b>
<b>Production of Raisins (Green Tons)</b>	<b>6</b>
<b>Price per Ton of Raisin (Green Tons)</b>	<b>7</b>
<b>Total Value of Production (Green Tons)</b>	<b>8</b>

<b>Crop Year</b>	<b>Bearing Acres</b>	<b>Yield/Ton</b>	<b>Production of Raisins (green tons)</b>	<b>Prices Received for Raisins (green tons)</b>	<b>Total Value of Production (green tons)</b>
2000	280,000	10.4	2,921,000	\$166	\$484,886,000
2001	235,000	9.43	2,215,000	\$186	\$411,990,000
2002	246,000	11.4	2,804,000	\$152	\$426,208,000
2003	255,000	8.43	2,149,000	\$170	\$365,330,000
2004	244,000	8.35	2,038,000	\$306	\$623,628,000
2005	240,000	9.52	2,285,000	\$261	\$596,385,000
2006	234,000	7.95	1,861,000	\$277	\$515,497,000
2007	227,000	9.48	2,151,000	\$278	\$597,978,000
2008	221,000	11.4	2,520,000	\$265	\$667,800,000
2009	216,000	8.97	1,938,000	\$290	\$562,020,000
2010	210,000	10.2	2,133,000	\$343	\$731,619,000
2011	205,000	10.7	2,194,000	\$382	\$838,108,000
2012	200,000	9.05	1,810,000	\$457	\$827,170,000
2013	200,000	11.4	2,270,000	\$364	\$826,280,000
2014	190,000	9.86	1,874,000	\$381	\$713,994,000
2015	184,000	10.9	2,007,000	\$349	\$700,443,000
2016	170,000	9.24	1,570,000	\$277	\$434,890,000
2017	158,000	8.23	1,301,000	\$414	\$538,614,000
2018	152,000	10.16	1,545,000	\$428	\$661,260,000
2019	149,000	9.26	1,380,000	\$266	\$367,080,000
2020	142,000	8.38	1,190,000	\$256	\$304,640,000
2021	136,000	7.76	1,055,000	\$354	\$373,470,000
2022	133,000	7.59	1,010,000	\$378	\$381,780,000

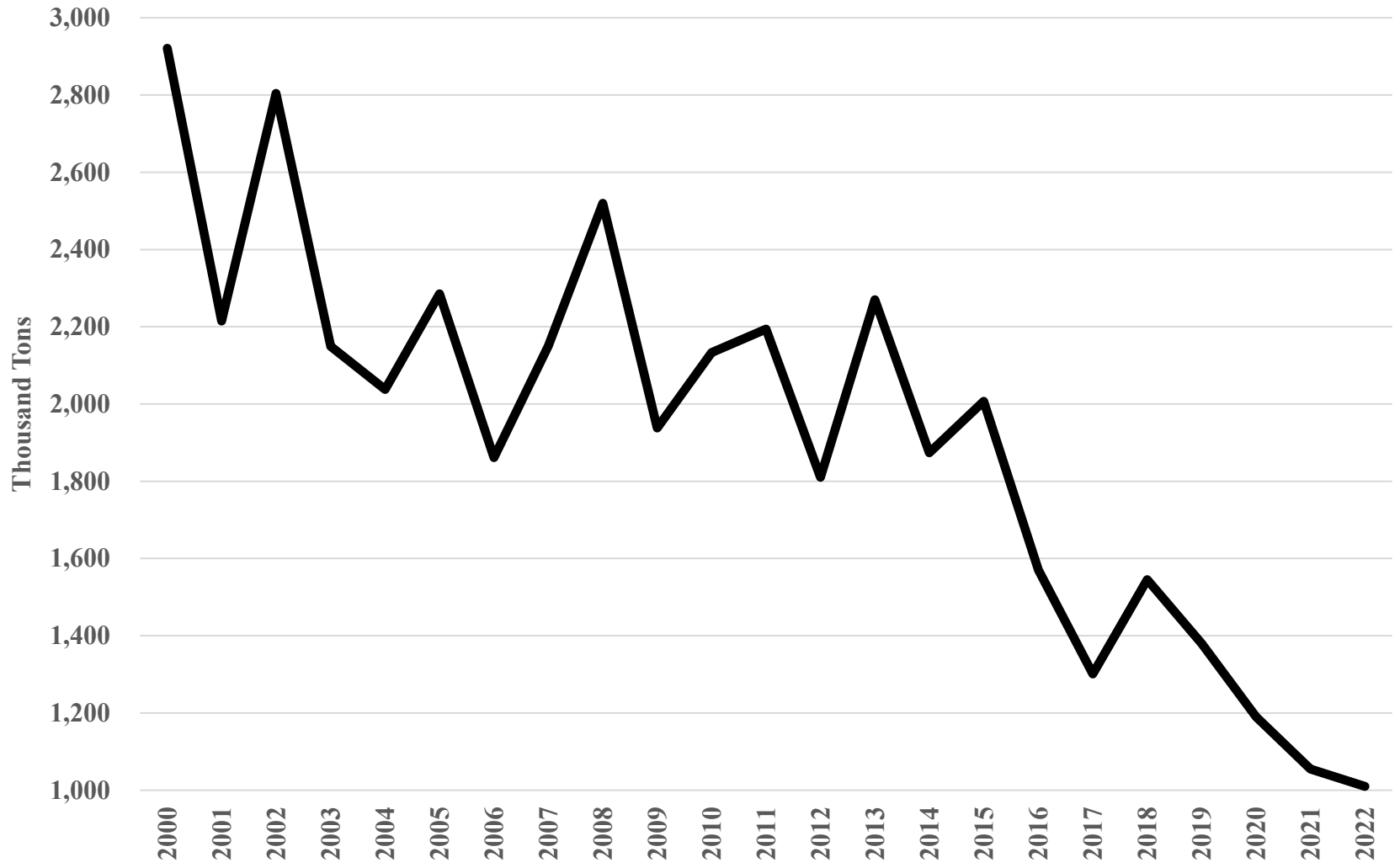
**Bearing Acres for Raisins, 2000 through 2022**



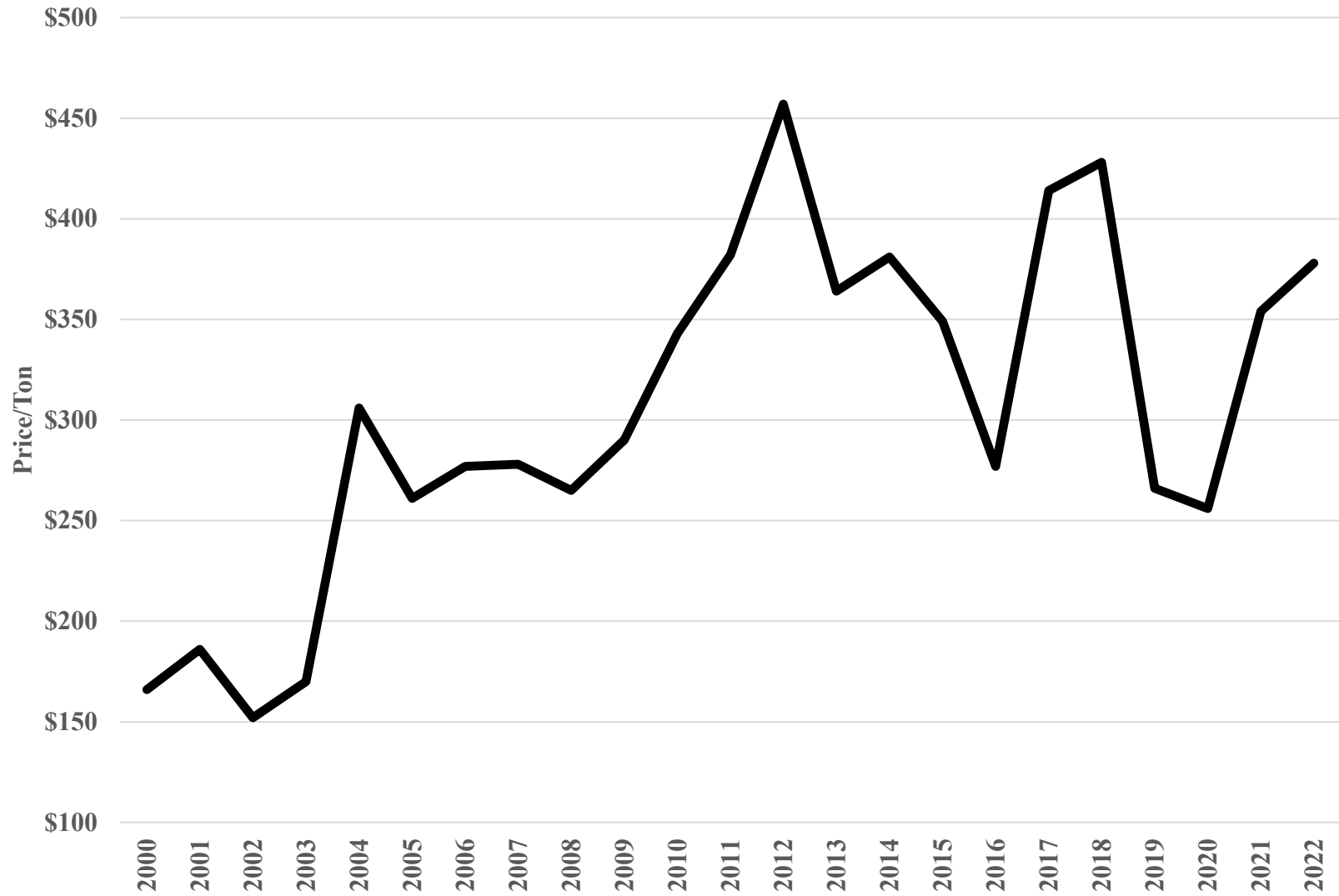
**Yield for Raisins, 2000 through 2022 in Green Tons**



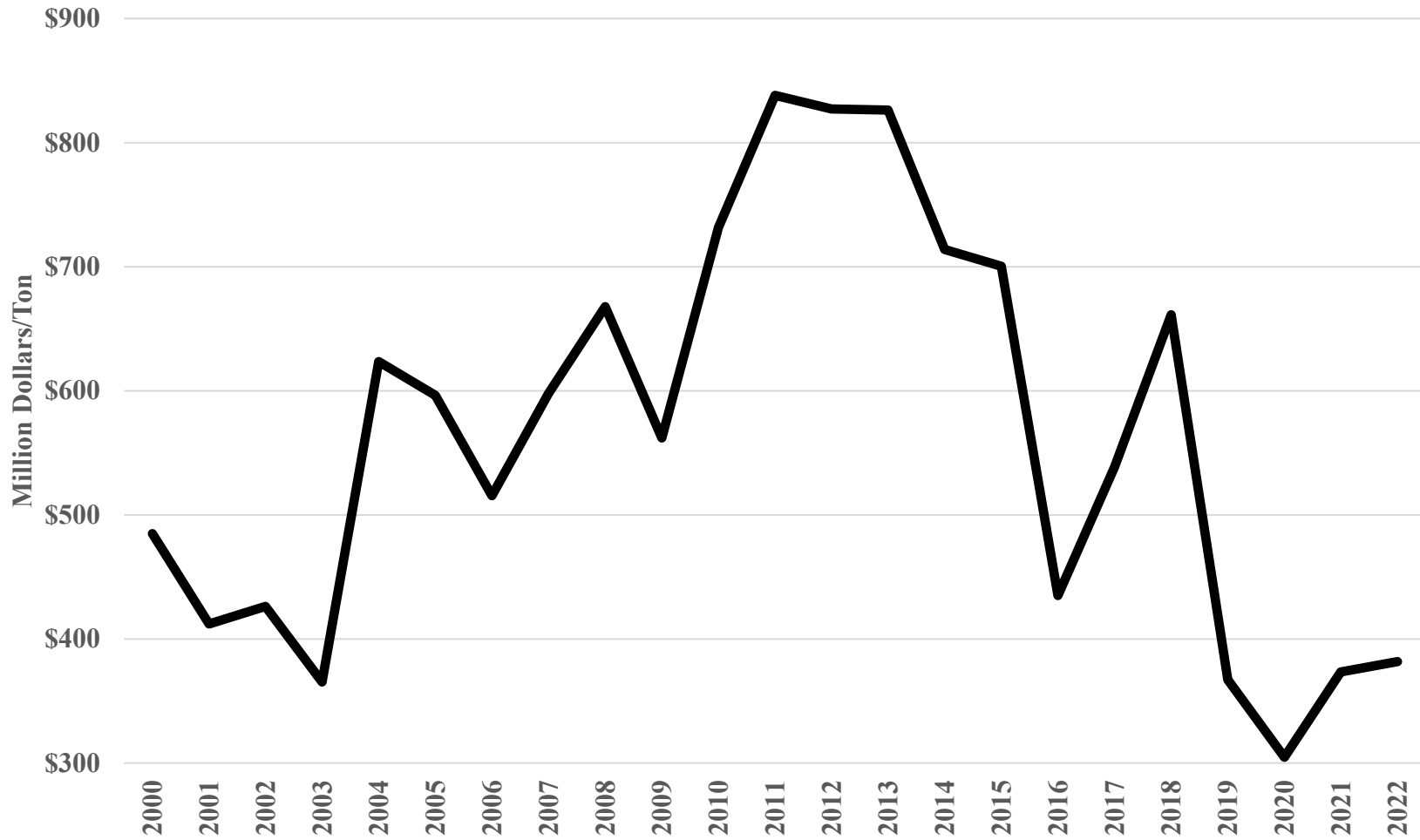
**Total Production of Raisins in Green Tons, 2000 through 2022**



**Price per Ton Received for Raisins in Green Tons, 2000 through 2022**



**Value of Production of Raisins in Green Tons, 2000 through 2022\***



\*Value of production of raisin = Production of raisins in green tons multiplied by price per ton received for raisins in green tons.