

# AMS: Aisle by Aisle

Want more clarity on your groceries? AMS provides information and services to inform your grocery store purchases and help ensure the quality of what goes in your cart.

[Produce](#)

[Dairy & Eggs](#)

[Meat](#)

[Bakery](#)

[Pantry](#)



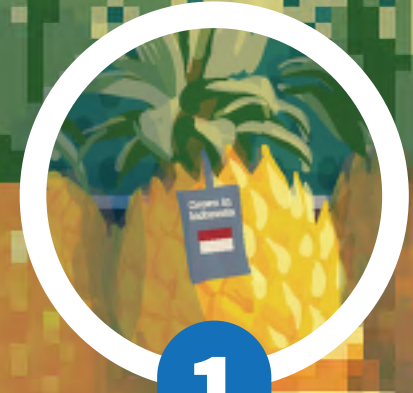
**Agricultural Marketing Service**  
U.S. DEPARTMENT OF AGRICULTURE

# Produce

- 1.** If your pineapple has a sticker saying where it was grown, you can thank **COOL** - a law administered by AMS that requires grocery stores and some other retailers to tell customers where **certain foods** come from. AMS also inspects **fruit** like pineapples, as well as **vegetables** and **other crops**.
- 2.** Clamshell packages for grapes make it easy to see what you're buying; AMS oversees **marketing orders** that regulate grape containers, quality and more.
- 3.** Buying organic? The **USDA Organic seal** is the only federally regulated organic label, and requires practices that preserve biodiversity and ecological balance. AMS also oversees the **Plant Variety Protection Act**, which encourages new plant varieties and helps ensure plenty of veggies to choose from at the store.



2



1



3

# Dairy & Eggs

- 1.** About 70% of total U.S. milk production falls under a **federal milk marketing order**, authorized by AMS. Federal milk marketing orders determine minimum milk prices, which helps ensure that farmers are paid accurately and that there's an adequate supply of milk for consumers.
- 2.** **Butter** is among the many products that are **quality graded** by AMS. In 2023, we graded over 1.2 billion pounds of butter.
- 3.** **Eggs** are one of 22 commodities under AMS **Research & Promotion Programs**, which help industries promote and conduct research on their products.



1



3

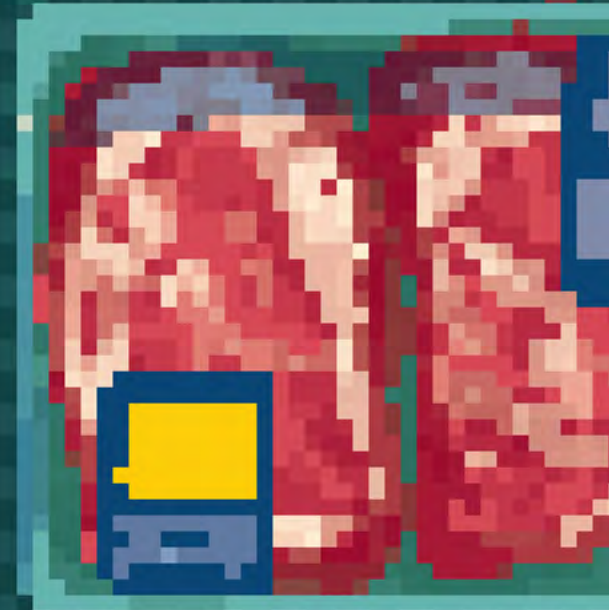


2



# Meat

1. Curious about **chicken prices**? AMS keeps pricing transparent with free, unbiased data for **hundreds of commodities**.
2. Look for **Prime, Choice or Select** labels on your beef- that means it's been checked for quality by expert AMS graders. We also grade poultry, lamb and more, as well as **verifying company standards** such as no antibiotics use.
3. We **purchase** ham and a host of other foods for school lunches, nutrition assistance programs and international food aid. AMS also helps the poultry, livestock and meat industries stay **fair and competitive**.



[Home](#)

# Bakery

1. You can spot products with bio-engineered (BE) ingredients, since AMS oversees the [law](#) that requires disclosure of **BE foods**.
2. While all wheat seeds may look similar, the wheat used for cake flour is usually softer than wheat used for pasta. We help ensure wheat and other seeds are accurately labeled via the [Federal Seed Act](#).
3. Wheat, rice, barley and numerous other grains are **inspected and weighed** by AMS-managed labs.





# Pantry

- 1.** Some products on the shelf had AMS help getting there- our **grant programs** support **maple syrup producers**, beekeepers, and other agricultural producers with funding, research and marketing. We also help increase consumer access to **locally sourced products**, such as jam.
- 2.** AMS **grades every bale of cotton** produced in the U.S. and is recognized as the global leader in **cotton fiber testing**.
- 3.** We test commodities like peanut butter for **pesticide residues**; our free database has **data from 1994-2022**. AMS also administers the inspection and **testing of peanuts and other nuts** for toxins.



1



3



2

[Home](#)