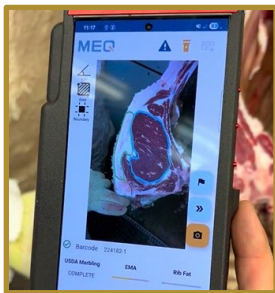


# USDA Approved Instruments for Augmenting Beef Grading

The following USDA-approved cameras and technologies assist plant graders in the consistent and uniform application of beef carcasses grades according to the [U.S. Standards for Grades of Carcass Beef](#). The approved instruments perform a range of functions from predictive marbling scores for the application of Prime, Choice, and Select grade shields, to the application of Yield Grades, and the measuring of ribeye area that is often used in [Certified Beef Programs](#). Questions? Contact Chad Nelson (National Meat Supervisor, USDA, AMS Livestock and Poultry Program) at [Chad.Nelson2@usda.gov](mailto:Chad.Nelson2@usda.gov)

## MEQ Camera V2 technology

### Image



(Click this [link](#) to watch video of equipment in use)

### Info

- Approved to predict Official Beef Marbling Score, Ribeye Area, Preliminary Yield Grade and Yield Grade
- Camera series numbers  $\geq$  10001 are approved

### Company Contact

Mr. Remo Carbone  
MEQ Incorporated  
5900 Balcones Dr.  
Austin, TX 78731  
[remo@meqprobe.com](mailto:remo@meqprobe.com)

## Global Meat Imaging LLC, GMI Google Pixel 7a technology

### Image



### Info

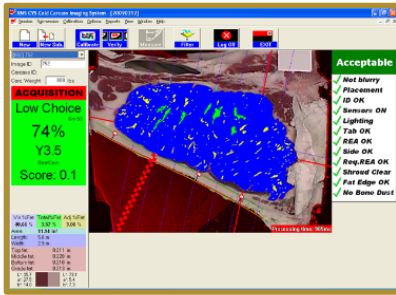
- Global Meat Imaging LLC and GMI Google Pixel 7a technology
- Approved to predict Official Beef Marbling Score
- Camera series numbers  $\geq$  20001 are approved

### Company Contact

Dr. Robert J. Richmond  
1236 Hawkeye Ct.  
Fort Collins, CO 80525  
[bob\\_rms@yahoo.com](mailto:bob_rms@yahoo.com)

## RMS/CVS technology

### Image



### Info

- The RMS/CVS technology is approved to predict Official Beef Marbling Score, Ribeye Area, Preliminary Yield Grade and Yield Grade.
- Camera series numbers  $\geq 100$  are approved

### Company Contact

Dr. Robert J. Richmond  
1236 Hawkeye Ct.  
Fort Collins, CO 80525  
[bob\\_rms@yahoo.com](mailto:bob_rms@yahoo.com)

## JBT / Marel/ E+V, VBG2000-GigE technology

### Image



### Info

- The approved VBG2000 is a beef rib eye vision system installed in grading coolers.
- Measures marbling, rib eye area, fat thickness, yield grade, and meat and fat color
- Camera series numbers  $\geq 300$  are approved

### Company Contact

Mr. Hector Garnica  
401 SW 7th Street  
Des Moines, IA 50309  
[Hector.Garnica@marel.com](mailto:Hector.Garnica@marel.com)

## JBT Marel AuraVBG, VBG2000-7L technology

### Image



### Info

- Approved to predict Official Beef Marbling Score, Ribeye Area, Preliminary Yield Grade, and Yield Grade
- Improved version of GigE model with AI.
- 7 Laser technology to measure ribbing and camera placement.
- Camera series numbers  $\geq 700$  are approved

### Company Contact

Mr. Hector Garnica  
401 SW 7th Street  
Des Moines, IA 50309  
[Hector.Garnica@marel.com](mailto:Hector.Garnica@marel.com)