



United States Department of Agriculture

Agricultural Marketing Service - Dairy Programs

**Florida Marketing Area
Federal Order No. 6**

2006 ANNUAL STATISTICS

Sue L. Mosley
Market Administrator
P.O. Box 491778
Lawrenceville, Georgia 30049

EXHIBIT

13

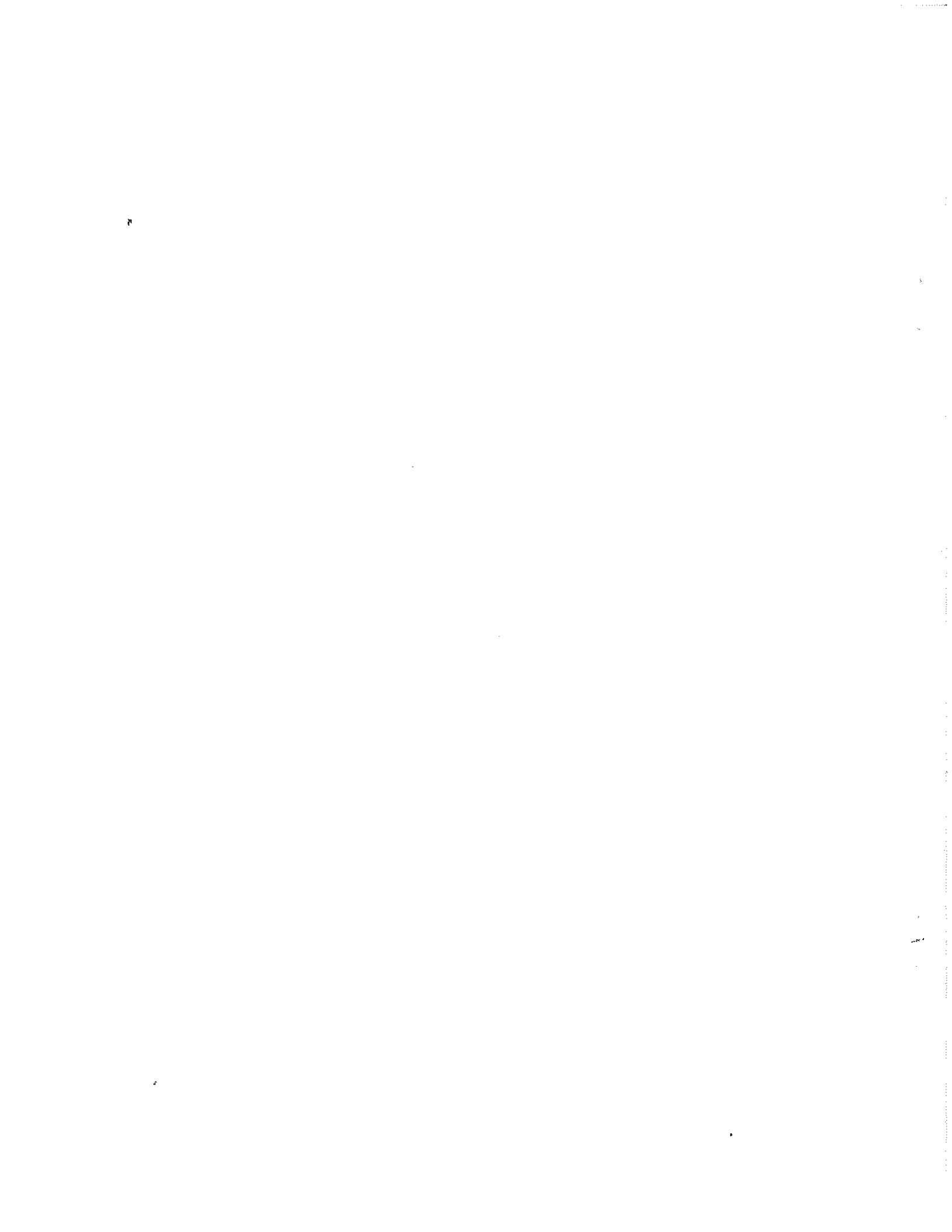
TABLE OF CONTENTS

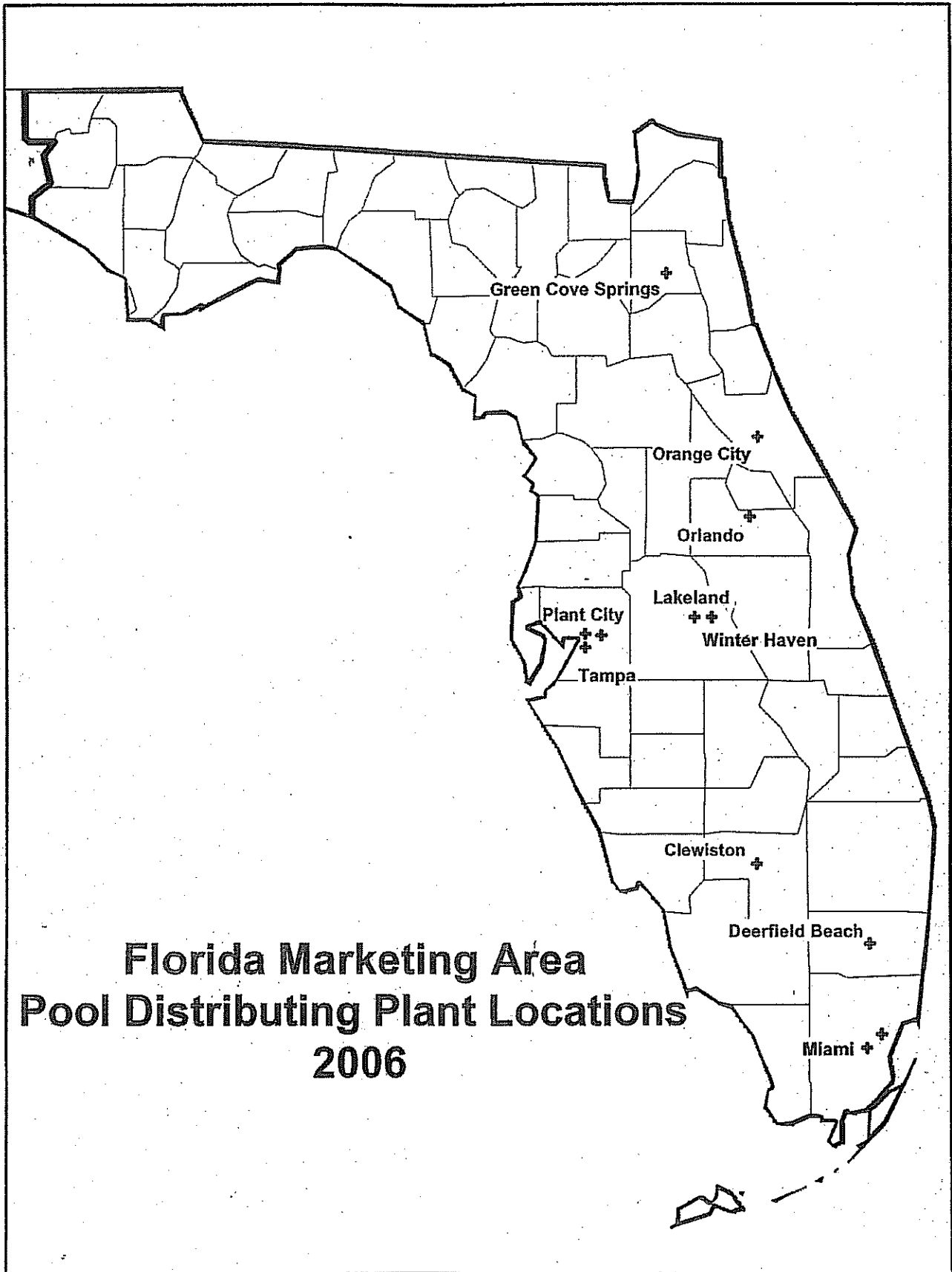
Florida Marketing Area Map	1
Receipts and Classification of Producer Milk	2
Receipts and Classification of Other Source Milk, Overages, and Opening Inventories	3
Classification of Total Receipts	4
Class I Utilization by Pool Handlers	5
Route Disposition by Pool and Non-Pool Plants	6
Total Class I Route Disposition by Pool Plants	7
Total Class I Route Disposition Inside the Marketing Area	8
Class II Utilization by Pool Handlers	9
Class III Utilization by Pool Handlers	10
Class IV Utilization by Pool Handlers	11
Announced Federal Order Class and Uniform Prices	12
NASS Dairy Product Price Averages Used In Federal Milk Order Price Formulas	13
2006 Pool Handlers	14
2006 Nonpool Handlers with Route Disposition in the Marketing Area	16

The data presented herein represents a compilation of general information pertaining to the marketing of milk in the Florida Marketing Area during 2006. Except for the corrections of mathematical and other obvious errors, the data presented were taken from reports of receipts and utilization, payroll reports, and reports of nonpool handlers that were submitted to the office of the Market Administrator as well as publications released by this office.

This information is prepared pursuant to Section 1000.25 (c)(8) of the General Provisions of Federal Milk Marketing Orders, Part 1000 which is incorporated by reference and made a part of Federal Order Number 6. Part 1000 states that the Market Administrator shall "Prepare and disseminate publicly for the benefit of producers, handlers, and consumers such statistics and other information concerning operation of the order and facts relevant to the provisions thereof (or proposed provisions) as do not reveal confidential information."

"The U.S. Department of Agriculture (USDA) prohibits discrimination in all its programs and activities on the basis of race, color, national origin, age, disability, and where applicable, sex, marital status, familial status, parental status, religion, sexual orientation, genetic information, political beliefs, reprisal, or because all or a part of an individual's income is derived from any public assistance program. (Not all prohibited bases apply to all programs.) Persons with disabilities who require alternative means for communication of program information (Braille, large print, audiotape, etc.) should contact USDA's TARGET Center at (202) 720-2600 (voice and TDD). To file a complaint of discrimination write to USDA, Director, Office of Civil Rights, 1400 Independence Avenue, S.W., Washington, D.C. 20250-9410 or call (800) 795-3272 (voice) or (202) 720-6382 (TDD). USDA is an equal opportunity provider and employer."





**Florida Marketing Area
Pool Distributing Plant Locations
2006**

**FLORIDA MARKETING AREA
FEDERAL ORDER NO. 6**

RECEIPTS AND CLASSIFICATION OF PRODUCER MILK AND BUTTERFAT

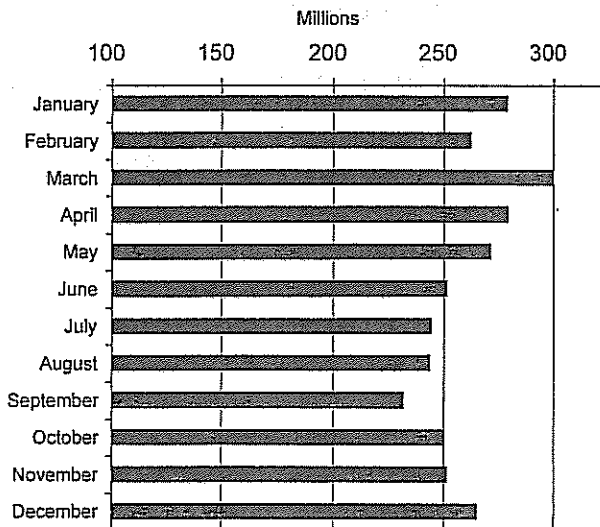
2006	CLASS I			CLASS II		
	PRODUCT POUNDS	%	BUTTERFAT POUNDS	PRODUCT POUNDS	%	BUTTERFAT POUNDS
January	238,002,738	85.42	5,003,573	19,916,954	7.15	2,937,483
February	215,648,876	82.33	4,460,352	18,256,664	6.97	2,664,565
March	241,923,769	80.76	5,008,738	21,714,172	7.25	3,103,167
April	220,645,306	79.12	4,625,181	20,219,967	7.25	3,357,987
May	217,963,797	80.43	4,657,223	22,413,517	8.27	3,315,898
June	207,983,538	82.84	4,570,904	21,113,269	8.41	3,347,537
July	207,314,824	84.86	4,573,677	20,802,470	8.51	3,285,181
August	215,043,853	88.32	4,562,498	19,883,610	8.17	3,392,803
September	205,156,737	88.52	4,350,876	17,988,970	7.76	3,099,563
October	211,434,457	84.60	4,457,696	21,520,296	8.61	3,334,672
November	220,684,447	87.86	4,792,907	22,976,465	9.15	3,344,167
December	225,299,754	85.10	5,004,440	17,591,951	6.65	2,761,425
Total	2,627,102,096	84.03%	56,068,065	244,398,305	7.82%	37,944,448

2006	CLASS III			CLASS IV		
	PRODUCT POUNDS	%	BUTTERFAT POUNDS	PRODUCT POUNDS	%	BUTTERFAT POUNDS
January	2,188,670	0.79	55,695	18,485,082	6.64	2,315,138
February	11,946,701	4.56	242,508	16,094,319	6.14	2,280,241
March	20,144,945	6.73	864,833	15,741,864	5.26	1,877,109
April	17,893,262	6.42	516,919	20,100,026	7.21	1,538,825
May	23,305,853	8.60	517,766	7,310,517	2.70	1,199,240
June	12,452,235	4.96	253,093	9,517,186	3.79	827,525
July	4,470,697	1.83	216,189	11,732,521	4.80	713,178
August	728,583	0.30	298,040	7,827,936	3.21	639,440
September	1,040,080	0.45	530,523	7,575,172	3.27	623,960
October	677,120	0.27	229,181	16,299,043	6.52	1,316,540
November	488,693	0.19	282,439	7,037,494	2.80	975,748
December	5,824,673	2.20	236,316	16,014,493	6.05	1,769,968
Total	101,161,512	3.23%	4,243,502	153,735,653	4.92%	16,076,912

TOTAL PRODUCER RECEIPTS

2006	PRODUCT POUNDS	%	BUTTERFAT POUNDS
January	278,593,444	100.00	10,311,889
February	261,946,560	100.00	9,647,666
March	299,524,750	100.00	10,853,847
April	278,858,561	100.00	10,038,912
May	270,993,684	100.00	9,690,127
June	251,066,228	100.00	8,999,059
July	244,320,512	100.00	8,788,225
August	243,483,982	100.00	8,892,781
September	231,760,959	100.00	8,604,922
October	249,930,916	100.00	9,338,089
November	251,187,099	100.00	9,395,261
December	264,730,871	100.00	9,772,149
Total	3,126,397,566	100.00%	114,332,927

Monthly Producer Receipts



FLORIDA MARKETING AREA
FEDERAL ORDER NO. 6

RECEIPTS AND CLASSIFICATION OF OTHER SOURCE MILK,
OVERAGES, AND OPENING INVENTORIES

2006	<u>OTHER SOURCE MILK</u>	<u>OVERAGES</u>	<u>OPENING INVENTORIES</u>	<u>TOTAL</u>
January	18,172,944	144,906	19,548,143	37,865,993
February	12,254,000	17,170	21,837,859	34,109,029
March	14,229,010	12,624	21,633,106	35,874,740
April	14,073,995	5,847	21,450,744	35,530,586
May	15,903,701	3,503	25,750,242	41,657,446
June	14,657,131	35,553	22,716,568	37,409,252
July	14,920,486	169,021	19,505,383	34,594,890
August	33,944,299	133,629	19,693,346	53,771,274
September	27,166,639	79	21,072,274	48,238,992
October	27,113,407	88,219	19,065,512	46,267,138
November	19,818,260	0	22,592,101	42,410,361
December	18,366,125	2,791	22,680,763	41,049,679
Total	230,619,997	613,342	257,546,041	488,779,380

2006	<u>CLASS I</u>	<u>CLASS II</u>	<u>CLASS III</u>	<u>CLASS IV</u>
January	20,767,604	9,698,902	0	7,399,487
February	16,831,958	6,954,726	0	10,322,345
March	18,114,449	8,710,330	415,931	8,634,030
April	20,153,298	8,450,809	0	6,926,479
May	18,773,375	11,060,242	0	11,823,829
June	17,223,099	10,301,293	0	9,884,860
July	18,413,405	10,206,341	0	5,975,144
August	31,746,024	10,363,768	358,388	11,303,094
September	29,982,274	10,408,930	361,385	7,486,403
October	29,699,521	9,774,877	0	6,792,740
November	21,391,315	9,490,423	423,318	11,105,305
December	20,166,875	10,114,580	189,878	10,578,346
Total	263,263,197	115,535,221	1,748,900	108,232,062

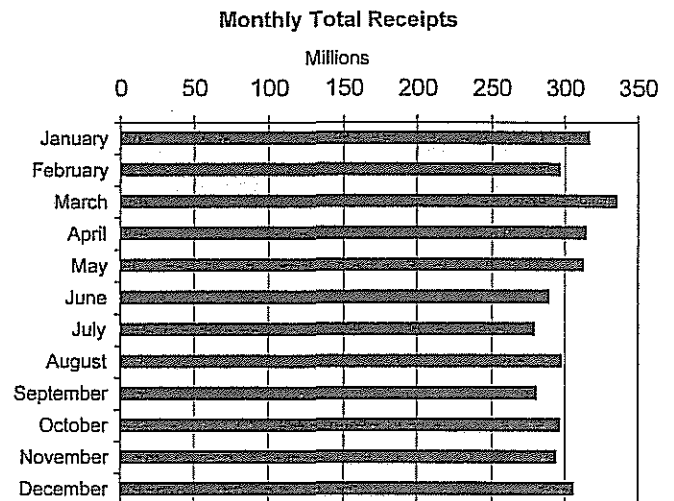
**FLORIDA MARKETING AREA
FEDERAL ORDER NO. 6**

CLASSIFICATION OF TOTAL RECEIPTS

2006	CLASS I			CLASS II		
	PRODUCT POUNDS	BUTTERFAT POUNDS	BUTTERFAT TEST	PRODUCT POUNDS	BUTTERFAT POUNDS	BUTTERFAT TEST
January	258,770,342	5,412,059	2.09%	29,615,856	2,954,175	9.97%
February	232,480,834	4,792,038	2.06%	25,211,390	2,666,289	10.58%
March	260,038,218	5,367,531	2.06%	30,424,502	3,130,985	10.29%
April	240,798,604	5,030,420	2.09%	28,670,776	3,364,187	11.73%
May	236,737,172	5,027,873	2.12%	33,473,759	3,375,596	10.08%
June	225,206,637	4,928,284	2.19%	31,414,562	3,396,666	10.81%
July	225,728,229	4,968,057	2.20%	31,008,811	3,322,333	10.71%
August	246,789,877	5,203,502	2.11%	30,247,378	3,436,244	11.36%
September	235,139,011	4,943,808	2.10%	28,397,900	3,109,750	10.95%
October	241,133,978	5,054,334	2.10%	31,295,173	3,338,066	10.67%
November	242,075,762	5,240,549	2.16%	32,466,888	3,345,692	10.30%
December	245,466,629	5,433,002	2.21%	27,706,531	2,771,402	10.00%
Total	2,890,365,293	61,401,457	2.12%	359,933,526	38,211,385	10.62%

2006	CLASS III			CLASS IV		
	PRODUCT POUNDS	BUTTERFAT POUNDS	BUTTERFAT TEST	PRODUCT POUNDS	BUTTERFAT POUNDS	BUTTERFAT TEST
January	2,188,670	55,695	2.54%	25,884,569	2,836,357	10.96%
February	11,946,701	242,508	2.03%	26,416,664	2,776,118	10.51%
March	20,560,876	864,833	4.21%	24,375,894	2,307,659	9.47%
April	17,893,262	516,919	2.89%	27,026,505	1,962,388	7.26%
May	23,305,853	517,766	2.22%	19,134,346	1,764,859	9.22%
June	12,452,235	253,093	2.03%	19,402,046	1,285,290	6.62%
July	4,470,697	216,189	4.84%	17,707,665	1,049,732	5.93%
August	1,086,971	429,538	39.52%	19,131,030	1,309,509	6.84%
September	1,401,465	530,739	37.87%	15,061,575	1,322,071	8.78%
October	677,120	229,181	33.85%	23,091,783	1,923,346	8.33%
November	912,011	324,408	35.57%	18,142,799	1,538,346	8.48%
December	6,014,551	236,316	3.93%	26,592,839	2,278,314	8.57%
Total	102,910,412	4,417,185	4.29%	261,967,715	22,353,989	8.53%

2006	TOTAL RECEIPTS		
	PRODUCT POUNDS	BUTTERFAT POUNDS	BUTTERFAT TEST
January	316,459,437	11,258,286	3.56%
February	296,055,589	10,476,953	3.54%
March	335,399,490	11,671,008	3.48%
April	314,389,147	10,873,914	3.46%
May	312,651,130	10,686,094	3.42%
June	288,475,480	9,863,333	3.42%
July	278,915,402	9,556,311	3.43%
August	297,255,256	10,378,793	3.49%
September	279,999,951	9,906,368	3.54%
October	296,198,054	10,544,927	3.56%
November	293,597,460	10,448,995	3.56%
December	305,780,550	10,719,034	3.51%
Total	3,615,176,946	126,384,016	3.50%



**FLORIDA MARKETING AREA
FEDERAL ORDER NO. 6**

TOTAL CLASS I UTILIZATION BY POOL HANDLERS

2006	<u>TOTAL CLASS I ROUTE DISPOSITION</u>	<u>TRANSFERRED OR DIVERTED TO NONPOOL PLANTS</u>	<u>ENDING INVENTORY</u>	<u>CLASS I SHRINKAGE</u>
January	244,720,808	87,696	13,394,721	567,117
February	218,596,770	119,918	13,453,833	310,313
March	244,391,631	27,702	15,400,980	217,905
April	224,978,242	86,953	15,167,772	565,637
May	222,968,751	105,622	13,504,418	158,381
June	209,309,792	568,090	14,550,087	778,668
July	212,198,612	20,721	12,476,116	1,032,780
August	231,683,860	24,802	14,721,509	359,706
September	218,588,029	32,987	16,225,392	292,603
October	226,394,111	35,980	14,097,079	606,808
November	225,058,942	69,544	14,736,782	2,210,494
December	231,751,978	47,058	12,985,154	682,439
Total	2,710,641,526	1,227,073	170,713,843	7,782,851

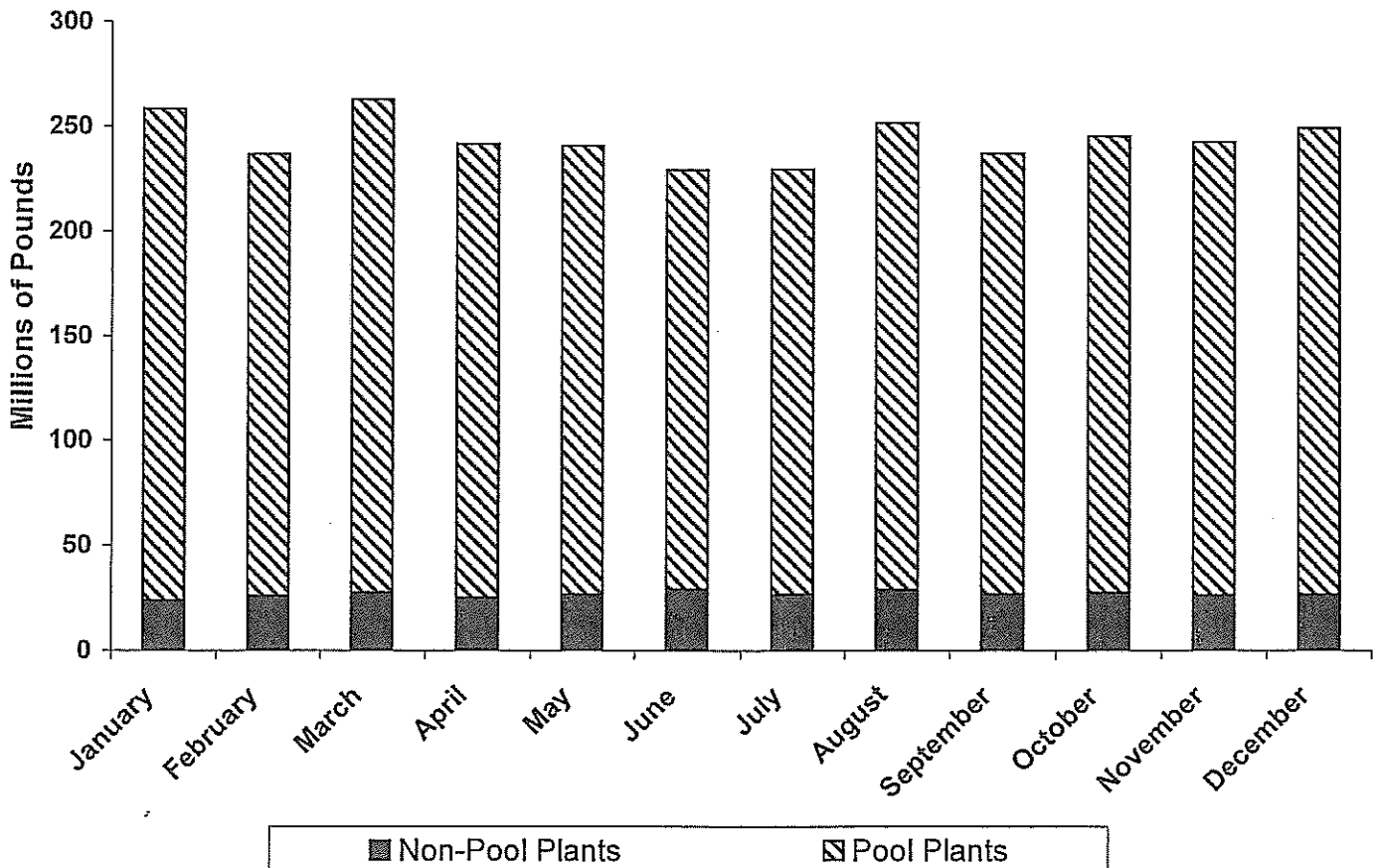
TOTAL CLASS I UTILIZATION

2006	<u>PRODUCT POUNDS</u>	<u>BUTTERFAT POUNDS</u>	<u>BUTTERFAT TEST</u>	<u>DAILY AVERAGE UTILIZATION</u>
January	258,770,342	5,412,059	2.09%	8,347,430
February	232,480,834	4,792,038	2.06%	8,302,887
March	260,038,218	5,367,531	2.06%	8,388,330
April	240,798,604	5,030,420	2.09%	8,026,620
May	236,737,172	5,027,873	2.12%	7,636,683
June	225,206,637	4,928,284	2.19%	7,506,888
July	225,728,229	4,968,057	2.20%	7,281,556
August	246,789,877	5,203,502	2.11%	7,960,964
September	235,139,011	4,943,808	2.10%	7,837,967
October	241,133,978	5,054,334	2.10%	7,778,515
November	242,075,762	5,240,549	2.16%	8,069,192
December	245,466,629	5,433,002	2.21%	7,918,278
Total	2,890,365,293	61,401,457	2.12%	7,918,809

**FLORIDA MARKETING AREA
FEDERAL ORDER 6
ROUTE DISPOSITION IN THE MARKET BY POOL AND NON-POOL PLANTS**

2006	IN-AREA SALES NONPOOL PLANTS	% NONPOOL PLANTS	IN-AREA SALES F.O. 6 POOL PLANTS	% POOL PLANTS	TOTAL F.O. 6 IN-AREA SALES
January	23,499,094	9.10%	234,605,844	90.90%	258,104,938
February	25,693,554	10.85%	211,088,147	89.15%	236,781,701
March	27,240,678	10.38%	235,237,624	89.62%	262,478,302
April	24,849,704	10.29%	216,539,284	89.71%	241,388,988
May	26,597,810	11.05%	214,018,450	88.95%	240,616,260
June	28,872,983	12.61%	200,105,055	87.39%	228,978,038
July	26,499,612	11.56%	202,786,687	88.44%	229,286,299
August	28,559,674	11.36%	222,773,832	88.64%	251,333,506
September	26,475,523	11.19%	210,208,578	88.81%	236,684,101
October	26,999,268	11.02%	217,949,345	88.98%	244,948,613
November	25,875,637	10.68%	216,396,628	89.32%	242,272,265
December	26,570,515	10.67%	222,461,132	89.33%	249,031,647
Total	317,734,052	10.87%	2,604,170,606	89.13%	2,921,904,658

2006 Class I Disposition by Pool & Non-Pool Plants



**FLORIDA MARKETING AREA
FEDERAL ORDER NO. 6**

TOTAL DISPOSITION ON ROUTES INSIDE THE MARKETING AREA BY POOL PLANTS

2006	WHOLE MILK	FAT FREE MILK	LOW FAT MILK	REDUCED FAT MILK	CULTURED MILK	FLAVORED MILK&DRINKS	TOTAL IN AREA
January	91,068,304	32,373,960	26,534,115	64,065,661	1,059,037	19,504,767	234,605,844
February	79,663,860	31,702,582	24,634,029	57,379,238	1,036,124	16,672,314	211,088,147
March	89,059,495	33,030,235	30,007,390	63,781,459	1,154,036	18,205,009	235,237,624
April	83,523,512	31,479,075	25,811,736	58,428,180	998,279	16,298,502	216,539,284
May	85,107,736	29,351,623	24,604,333	58,097,449	1,013,149	15,844,160	214,018,450
June	83,397,744	27,272,187	22,863,883	56,553,733	951,503	9,066,005	200,105,055
July	85,338,717	27,758,805	23,002,406	57,419,920	910,212	8,356,627	202,786,687
August	87,319,780	28,881,463	27,942,508	60,885,013	963,322	16,781,746	222,773,832
September	80,781,746	29,189,439	24,484,634	57,095,300	904,572	17,752,887	210,208,578
October	82,841,544	30,610,798	25,366,419	59,183,008	961,648	18,985,928	217,949,345
November	81,771,342	30,157,150	25,657,786	57,766,571	1,062,365	19,981,414	216,396,628
December	87,944,732	29,628,604	25,711,435	60,254,630	1,048,914	17,872,817	222,461,132
Total	1,017,818,512	361,435,921	306,620,674	710,910,162	12,063,161	195,322,176	2,604,170,606

TOTAL DISPOSITION ON ROUTES OUTSIDE THE MARKETING AREA BY POOL PLANTS

2006	WHOLE MILK	FAT FREE MILK	LOW FAT MILK	REDUCED FAT MILK	CULTURED MILK	FLAVORED MILK&DRINKS	TOTAL OUT OF AREA
January	4,936,979	1,099,523	947,944	2,999,208	64,684	66,626	10,114,964
February	3,847,974	721,830	574,150	2,243,608	66,834	54,227	7,508,623
March	4,647,043	933,825	774,545	2,667,529	72,786	58,279	9,154,007
April	4,272,505	855,415	714,891	2,472,238	71,424	52,485	8,438,958
May	4,541,175	867,390	724,599	2,687,567	69,972	59,598	8,950,301
June	4,733,593	853,854	753,715	2,726,670	67,089	69,816	9,204,737
July	4,812,061	880,459	763,665	2,812,109	75,495	68,136	9,411,925
August	4,491,808	854,455	745,340	2,671,818	69,390	77,217	8,910,028
September	4,181,642	804,769	687,611	2,583,887	62,134	59,408	8,379,451
October	4,214,898	834,484	724,419	2,552,306	66,092	52,567	8,444,766
November	4,303,212	817,779	727,905	2,609,956	143,510	59,952	8,662,314
December	4,510,562	880,268	807,975	2,869,387	145,269	77,385	9,290,846
Total	53,493,452	10,404,051	8,946,759	31,896,283	974,679	755,696	106,470,920

TOTAL DISPOSITION ON ROUTES IN AND OUT OF THE MARKETING AREA BY POOL PLANTS

2006	WHOLE MILK	FAT FREE MILK	LOW FAT MILK	REDUCED FAT MILK	CULTURED MILK	FLAVORED MILK&DRINKS	TOTAL SALES
January	96,005,283	33,473,483	27,482,059	67,064,869	1,123,721	19,571,393	244,720,808
February	83,511,834	32,424,412	25,208,179	59,622,846	1,102,958	16,726,541	218,596,770
March	93,706,538	33,964,060	30,781,935	66,448,988	1,226,822	18,263,288	244,391,631
April	87,796,017	32,334,490	26,526,627	60,900,418	1,069,703	16,350,987	224,978,242
May	89,648,911	30,219,013	25,328,932	60,785,016	1,083,121	15,903,758	222,968,751
June	88,131,337	28,126,041	23,617,598	59,280,403	1,018,592	9,135,821	209,309,792
July	90,150,778	28,639,264	23,766,071	60,232,029	985,707	8,424,763	212,198,612
August	91,811,588	29,735,918	28,687,848	63,556,831	1,032,712	16,858,963	231,683,860
September	84,963,388	29,994,208	25,172,245	59,679,187	966,706	17,812,295	218,588,029
October	87,056,442	31,445,282	26,090,838	61,735,314	1,027,740	19,038,495	226,394,111
November	86,074,554	30,974,929	26,385,691	60,376,527	1,205,875	20,041,366	225,058,942
December	92,455,294	30,508,872	26,519,410	63,124,017	1,194,183	17,950,202	231,751,978
Total	1,071,311,964	371,839,972	315,567,433	742,806,445	13,037,840	196,077,872	2,710,641,526

**FLORIDA MARKETING AREA
FEDERAL ORDER NO. 6**

DISPOSITION ON ROUTES INSIDE THE MARKETING AREA BY NONPOOL PLANTS

2006	WHOLE MILK	FAT FREE MILK	LOW FAT MILK	REDUCED FAT MILK	CULTURED MILK	FLAVORED MILK&DRINKS	TOTAL NONPOOL
January	7,140,473	3,347,482	1,868,177	7,806,957	160,752	3,175,253	23,499,094
February	7,612,830	3,717,158	2,161,565	8,856,419	157,362	3,188,220	25,693,554
March	8,387,529	3,793,296	2,102,895	9,099,704	166,318	3,690,936	27,240,678
April	7,710,815	3,623,011	1,826,319	8,291,193	147,956	3,250,410	24,849,704
May	8,152,305	3,675,176	1,916,895	9,529,502	130,557	3,193,375	26,597,810
June	9,096,824	4,126,031	1,882,312	10,701,505	158,749	2,907,562	28,872,983
July	8,390,180	3,779,572	1,996,102	9,059,790	145,732	3,128,236	26,499,612
August	8,798,081	3,810,951	2,015,139	10,084,275	158,752	3,692,476	28,559,674
September	8,083,612	3,660,581	1,971,103	9,393,625	134,856	3,231,746	26,475,523
October	8,876,308	3,706,598	2,048,615	8,886,583	149,365	3,331,799	26,999,268
November	8,187,466	3,600,791	1,858,633	8,148,781	256,303	3,823,663	25,875,637
December	8,742,083	3,602,926	1,932,697	8,973,508	139,410	3,179,891	26,570,515
Total	99,178,506	44,443,573	23,580,452	108,831,842	1,906,112	39,793,567	317,734,052

DISPOSITION ON ROUTES INSIDE THE MARKETING AREA BY POOL PLANTS

2006	WHOLE MILK	FAT FREE MILK	LOW FAT MILK	REDUCED FAT MILK	CULTURED MILK	FLAVORED MILK&DRINKS	TOTAL POOL
January	91,068,304	32,373,960	26,534,115	64,065,661	1,059,037	19,504,767	234,605,844
February	79,663,860	31,702,582	24,634,029	57,379,238	1,036,124	16,672,314	211,088,147
March	89,059,495	33,030,235	30,007,390	63,781,459	1,154,036	18,205,009	235,237,624
April	83,523,512	31,479,075	25,811,736	58,428,180	998,279	16,298,502	216,539,284
May	85,107,736	29,351,623	24,604,333	58,097,449	1,013,149	15,844,160	214,018,450
June	83,397,744	27,272,187	22,863,883	56,553,733	951,503	9,066,005	200,105,055
July	85,338,717	27,758,805	23,002,406	57,419,920	910,212	8,356,627	202,786,687
August	87,319,780	28,881,463	27,942,508	60,885,013	963,322	16,781,746	222,773,832
September	80,781,746	29,189,439	24,484,634	57,095,300	904,572	17,752,887	210,208,578
October	82,841,544	30,610,798	25,366,419	59,183,008	961,648	18,985,928	217,949,345
November	81,771,342	30,157,150	25,657,786	57,766,571	1,062,365	19,981,414	216,396,628
December	87,944,732	29,628,604	25,711,435	60,254,630	1,048,914	17,872,817	222,461,132
Total	1,017,818,512	361,435,921	306,620,674	710,910,162	12,063,161	195,322,176	2,604,170,606

TOTAL DISPOSITION ON ROUTES INSIDE THE MARKETING AREA

2006	WHOLE MILK	FAT FREE MILK	LOW FAT MILK	REDUCED FAT MILK	CULTURED MILK	FLAVORED MILK&DRINKS	TOTAL SALES
January	98,208,777	35,721,442	28,402,292	71,872,618	1,219,789	22,680,020	258,104,938
February	87,276,690	35,419,740	26,795,594	66,235,657	1,193,486	19,860,534	236,781,701
March	97,447,024	36,823,531	32,110,285	72,881,163	1,320,354	21,895,945	262,478,302
April	91,234,327	35,102,086	27,638,055	66,719,373	1,146,235	19,548,912	241,388,988
May	93,260,041	33,026,799	26,521,228	67,626,951	1,143,706	19,037,535	240,616,260
June	92,494,568	31,398,218	24,746,195	67,255,238	1,110,252	11,973,567	228,978,038
July	93,728,897	31,538,377	24,998,508	66,479,710	1,055,944	11,484,863	229,286,299
August	96,117,861	32,692,414	29,957,647	70,969,288	1,122,074	20,474,222	251,333,506
September	88,865,358	32,850,020	26,455,737	66,488,925	1,039,428	20,984,633	236,684,101
October	91,717,852	34,317,396	27,415,034	68,069,591	1,111,013	22,317,727	244,948,613
November	89,958,808	33,757,941	27,516,419	65,915,352	1,318,668	23,805,077	242,272,265
December	96,686,815	33,231,530	27,644,132	69,228,138	1,188,324	21,052,708	249,031,647
Total	1,116,997,018	405,879,494	330,201,126	819,742,004	13,969,273	235,115,743	2,921,904,658

**FLORIDA MARKETING AREA
FEDERAL ORDER NO. 6**

TOTAL CLASS II UTILIZATION BY POOL HANDLERS

2006	<u>NONFLUID USED TO PRODUCE</u>	<u>SHRINKAGE 1/</u>	<u>TRANSFERRED OR DIVERTED TO NONPOOL PLANTS</u>	<u>USED TO PRODUCE 2/ & OTHER USES 3/</u>
January	10,413,090	0	5,022,335	14,180,431
February	6,941,537	0	5,445,623	12,824,230
March	8,603,413	0	7,416,209	14,404,880
April	8,432,602	0	6,363,683	13,874,491
May	10,835,007	0	6,958,849	15,679,903
June	10,100,910	0	7,523,738	13,789,914
July	10,139,333	0	6,342,382	14,527,096
August	9,804,481	10,288	6,516,223	13,916,386
September	8,923,746	0	6,470,046	13,004,108
October	9,751,339	0	6,814,687	14,729,147
November	7,743,784	4,481,286	6,220,137	14,021,681
December	8,747,546	0	5,302,038	13,656,947
Total	110,436,788	4,491,574	76,395,950	168,609,214

TOTAL CLASS II UTILIZATION

2006	<u>PRODUCT POUNDS</u>	<u>BUTTERFAT POUNDS</u>	<u>BUTTERFAT TEST</u>	<u>DAILY UTILIZATION</u>
January	29,615,856	2,954,175	9.97%	955,350
February	25,211,390	2,666,289	10.58%	900,407
March	30,424,502	3,130,985	10.29%	981,436
April	28,670,776	3,364,187	11.73%	955,693
May	33,473,759	3,375,596	10.08%	1,079,799
June	31,414,562	3,396,666	10.81%	1,047,152
July	31,008,811	3,322,333	10.71%	1,000,284
August	30,247,378	3,436,244	11.36%	975,722
September	28,397,900	3,109,750	10.95%	946,597
October	31,295,173	3,338,066	10.67%	1,009,522
November	32,466,888	3,345,692	10.30%	1,082,230
December	27,706,531	2,771,402	10.00%	893,759
Total	359,933,526	38,211,385	10.62%	986,119

1/ Pursuant § 1000.43 (b) (1) and (3). Assigned to lowest priced class.

2/ Pursuant § 1000.40 (b). Used to Produce assigned to Class II.

3/ Pursuant § 1000.40 (e). Other Uses assigned to lowest priced class.

**FLORIDA MARKETING AREA
FEDERAL ORDER NO. 6**

TOTAL CLASS III UTILIZATION BY POOL HANDLERS

2006	<u>SHRINKAGE 1/</u>	<u>TRANSFERRED OR DIVERTED TO NONPOOL PLANTS & USED TO PRODUCE</u>	<u>OTHER USES 2/</u>
January	0	2,188,670	0
February	0	11,946,701	0
March	0	20,560,876	0
April	0	17,893,262	0
May	0	23,305,853	0
June	0	12,452,235	0
July	0	4,470,697	0
August	0	1,086,971	0
September	0	1,401,465	0
October	0	677,120	0
November	0	912,011	0
December	0	6,014,551	0
Total	0	102,910,412	0

TOTAL CLASS III UTILIZATION

2006	<u>PRODUCT POUNDS</u>	<u>BUTTERFAT POUNDS</u>	<u>BUTTERFAT TEST</u>	<u>DAILY AVERAGE UTILIZATION</u>
January	2,188,670	55,695	2.54%	70,602
February	11,946,701	242,508	2.03%	426,668
March	20,560,876	864,833	4.21%	663,254
April	17,893,262	516,919	2.89%	596,442
May	23,305,853	517,766	2.22%	751,802
June	12,452,235	253,093	2.03%	415,075
July	4,470,697	216,189	4.84%	144,216
August	1,086,971	429,538	39.52%	35,064
September	1,401,465	530,739	37.87%	46,716
October	677,120	229,181	33.85%	21,843
November	912,011	324,408	35.57%	30,400
December	6,014,551	236,316	3.93%	194,018
Total	102,910,412	4,417,185	4.29%	281,946

1/ Pursuant § 1000.43 (b) (1). Assigned to lowest priced class.

2/ Pursuant § 1000.40 (e). Other Uses assigned to lowest priced class.

**FLORIDA MARKETING AREA
FEDERAL ORDER NO. 6**

TOTAL CLASS IV UTILIZATION BY POOL HANDLERS

2006	<u>ENDING INVENTORY</u>	<u>NONFLUID USED TO FORTIFY</u>	<u>SHRINKAGE 1/</u>	<u>TRANSFERRED OR DIVERTED TO NONPOOL PLANTS</u>	<u>USED TO PRODUCE/ OTHER USES 2/</u>
January	8,443,138	1,819,495	3,863,918	9,923,707	1,834,311
February	7,177,964	1,749,225	3,326,083	12,617,048	1,546,344
March	6,229,656	1,683,035	3,428,890	11,475,015	1,559,298
April	10,582,470	1,518,712	3,694,913	9,684,879	1,545,531
May	9,212,150	1,111,037	2,932,785	4,227,393	1,650,981
June	4,828,572	678,683	3,679,867	8,708,267	1,506,657
July	7,217,230	663,174	3,310,737	5,055,353	1,461,171
August	6,350,765	939,798	3,194,612	6,863,056	1,782,799
September	2,840,120	934,762	3,576,176	5,982,950	1,727,567
October	8,495,022	1,352,789	4,446,302	7,110,957	1,686,713
November	7,943,981	3,560,255	0	6,638,563	0
December	6,985,841	3,605,710	3,638,916	11,327,958	1,034,414
Total	86,306,909	19,616,675	39,093,199	99,615,146	17,335,786

TOTAL CLASS IV UTILIZATION

2006	<u>PRODUCT POUNDS</u>	<u>BUTTERFAT POUNDS</u>	<u>BUTTERFAT TEST</u>	<u>DAILY UTILIZATION</u>
January	25,884,569	2,836,357	10.96%	834,986
February	26,416,664	2,776,118	10.51%	943,452
March	24,375,894	2,307,659	9.47%	786,319
April	27,026,505	1,962,388	7.26%	900,884
May	19,134,346	1,764,859	9.22%	617,237
June	19,402,046	1,285,290	6.62%	646,735
July	17,707,665	1,049,732	5.93%	571,215
August	19,131,030	1,309,509	6.84%	617,130
September	15,061,575	1,322,071	8.78%	502,053
October	23,091,783	1,923,346	8.33%	744,896
November	18,142,799	1,538,346	8.48%	604,760
December	26,592,839	2,278,314	8.57%	857,834
Total	261,967,715	22,353,989	8.53%	717,720

1/ Pursuant § 1000.43 (b) (1). Shrinkage assigned to lowest priced class.

2/ Pursuant § 1000.40 (d) and (e). Used to Produce, Bulk Ending Inventory & NFMP-UTF assigned to Class IV. Other Uses assigned to lowest priced class.

**FLORIDA MARKETING AREA
FEDERAL ORDER NO. 6
ANNOUNCED FEDERAL ORDER CLASS & UNIFORM PRICES**

CLASS I*		
2006	Skim	Milk @ 3.5%
January	\$12.42	\$17.38
February	\$12.51	\$17.38
March	\$11.95	\$16.49
April	\$11.02	\$15.22
May	\$10.90	\$14.97
June	\$10.57	\$14.75
July	\$11.24	\$15.34
August	\$10.96	\$14.97
September	\$10.64	\$14.85
October	\$11.72	\$16.42
November	\$11.77	\$16.40
December	\$11.89	\$16.43
Average	\$11.47	\$15.88

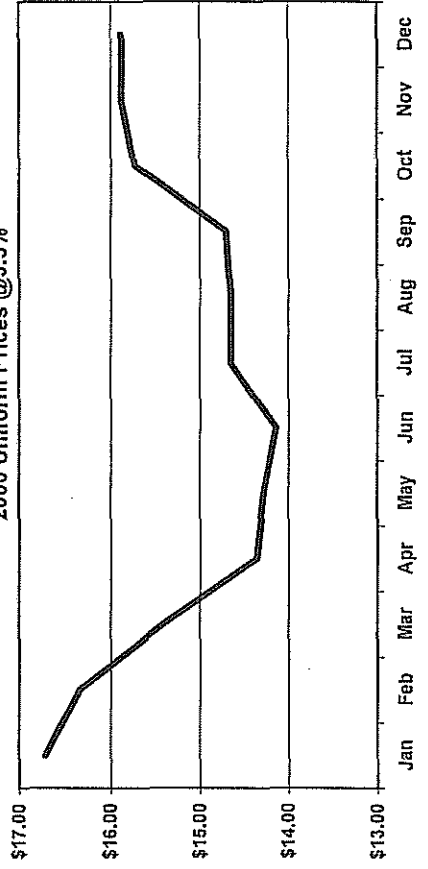
CLASS II		
2006	Skim	Milk @ 3.5%
January	\$8.38	\$14.754
February	\$8.17	\$13.539
March	\$7.52	\$12.666
April	\$7.28	\$12.413
May	\$6.94	\$12.2652
June	\$6.86	\$12.2506
July	\$6.76	\$12.2298
August	\$6.82	\$13.3078
September	\$6.99	\$14.261
October	\$7.06	\$14.219
November	\$7.37	\$13.922
December	\$8.09	\$13.551
Average	\$7.35	\$13.322

CLASS III		
2006	Skim	Milk @ 3.5%
January	\$8.55	\$13.99
February	\$7.76	\$12.20
March	\$6.94	\$11.11
April	\$6.85	\$10.93
May	\$6.66	\$10.83
June	\$7.19	\$11.29
July	\$6.88	\$10.92
August	\$6.74	\$11.06
September	\$7.59	\$12.29
October	\$7.64	\$12.32
November	\$8.28	\$12.84
December	\$9.07	\$13.47
Average	\$7.51	\$11.89

CLASS IV		
2006	Skim	Milk @ 3.5%
January	\$7.32	\$14.684
February	\$6.62	\$13.469
March	\$6.50	\$12.596
April	\$6.26	\$12.343
May	\$6.14	\$12.582
June	\$6.08	\$12.436
July	\$6.15	\$12.228
August	\$6.31	\$13.008
September	\$6.36	\$14.191
October	\$6.80	\$14.149
November	\$7.52	\$13.852
December	\$7.86	\$13.481
Average	\$6.66	\$13.252

UNIFORM*		
2006	Skim	Milk @ 3.5%
January	\$11.85	\$16.71
February	\$11.75	\$16.34
March	\$11.13	\$15.41
April	\$10.26	\$14.36
May	\$10.20	\$14.28
June	\$10.03	\$14.14
July	\$10.62	\$14.65
August	\$10.54	\$14.65
September	\$10.28	\$14.70
October	\$11.08	\$15.73
November	\$11.32	\$15.88
December	\$11.43	\$15.88
Average	\$10.87	\$15.23

2006 Uniform Prices @3.5%



* Class 1 and Uniform Prices are at Hillsborough County (Tampa), Florida

FLORIDA MARKETING AREA
FEDERAL ORDER NO. 6

NASS DAIRY PRODUCT PRICE AVERAGES USED IN
FEDERAL MILK ORDER PRICE FORMULAS

Class I (Skim, Bfat), Class II (Skim, Nonfat Solids)

2006	<u>Weeks Ending</u>	<u>Butter</u>	<u>Nonfat Dry Milk</u>	<u>Cheese</u>	<u>Dry Whey</u>
Dollars per pound					
January	12/10,17	1.3663	1.0018	1.3979	0.3244
February	1/7,14	1.3459	0.9782	1.3895	0.3394
March	2/4,11	1.2623	0.9053	1.2923	0.3532
April	3/4,11	1.1746	0.8789	1.1686	0.3478
May	4/8,15	1.1426	0.8400	1.1698	0.3056
June	5/6,13	1.1658	0.8309	1.1602	0.2811
July	6/10,17	1.1508	0.8205	1.2218	0.2817
August	7/8,15	1.1278	0.8268	1.1858	0.2796
September	8/5,12	1.1736	0.8463	1.1633	0.2925
October	9/9,16	1.2989	0.8542	1.3063	0.3162
November	10/7,14	1.2820	0.8891	1.2846	0.3500
December	11/4,11	1.2625	0.9691	1.2745	0.3740

Class II (Bfat), Class III, Class IV, Components

2006	<u>Weeks Ending</u>	<u>Butter</u>	<u>Nonfat Dry Milk</u>	<u>Cheese</u>	<u>Dry Whey</u>
Dollars per pound					
January	12/31,1/7,14,21,28	1.3387	0.9614	1.3895	0.3416
February	2/4,11,18,25	1.2374	0.8833	1.2637	0.3531
March	3/4,11,18,25	1.1647	0.8697	1.1612	0.3409
April	4/1,8,15,22,29	1.1436	0.8429	1.1654	0.3054
May	5/6,13,20,27	1.1635	0.8288	1.1694	0.2805
June	6/3,10,17,24	1.1513	0.8221	1.2166	0.2808
July	7/1,8,15,22,29	1.1340	0.8300	1.1793	0.2810
August	8/5,12,19,26	1.1990	0.8484	1.1813	0.2965
September	9/2,9,16,23	1.2976	0.8537	1.2912	0.3191
October	9/30,10/7,14,21,28	1.2941	0.9027	1.2721	0.3557
November	11/4,11,18,25	1.2693	0.9837	1.3123	0.3800
December	12/2,9,16,23,30	1.2384	1.0225	1.3624	0.4079

**FLORIDA MARKETING AREA
FEDERAL ORDER NO. 6
2006 POOL HANDLERS**

Fluid Milk Distributing Pool Plants §1006.7(a)

*

	J	F	M	A	M	J	J	A	S	O	N	D
Gustafson's, LLC Green Cove Springs, Florida	X	X	X	X	X	X	X	X	X	X	X	X
Hato Patrero Farms, Inc. Clewiston, FL	X	X	X	X	X	X	X	X	X	X	X	X
M&B Dairy Products, Inc. Tampa, Florida	Changed from Exempt						X	X	X	X	X	X
McArthur Dairy, Inc. Miami, Florida	X	X	X	X	X	X	X	X	X	X	X	X
Publix Supermarkets, Inc. Deerfield Beach, Florida	X	X	X	X	X	X	X	X	X	X	X	X
Publix Supermarkets, Inc. Lakeland, Florida	X	X	X	X	X	X	X	X	X	X	X	X
Sunbelt Dairy & Food Company Tampa, Florida	X	X	X	X	X	X	X	X	X	X	X	X
T.G. Lee Foods, Inc. Orange City, Florida	X	X	X	X	X	X	X	X	X	X	X	X
T.G. Lee Foods, Inc. Orlando, Florida	X	X	X	X	X	X	X	X	X	X	X	X
Velda Farms, LLC Miami, Florida	X	X	X	X	X	X	X	X	X	X	X	X
Velda Farms, LLC Winter Haven, Florida	X	X	X	X	X	X	X	X	X	X	X	X
Winn-Dixie Trust Stores, Inc. Plant City, Florida	X	X	X	X	X	X	X	X	X	X	X	X

**FLORIDA MARKETING AREA
FEDERAL ORDER NO. 6
2006 POOL HANDLERS**

Cooperatives Qualifying as Pool Handlers §1006.9(c)

²

	J	F	M	A	M	J	J	A	S	O	N	D
Dairy Farmers of America, Inc. Kansas City, Missouri	X	X	X	X	X	X	X	X	X	X	X	X
Lone Star Milk Producers, Inc. Windthorst, Texas	X	X	X	X	X	X	X	X	X	X	X	X
Maryland/Virginia Milk Producers Reston, Virginia	X	X	X	X	X	X	X	X	X	X	X	X
Select Milk Producers Artesia, New Mexico	X						X	X	X	X	X	X
Southeast Milk, Inc. Bellevue, Florida	X	X	X	X	X	X	X	X	X	X	X	X

**FLORIDA MARKETING AREA
FEDERAL ORDER NO. 6
NONPOOL PLANTS WITH ROUTE DISPOSITION IN THE AREA - 2006**

J	F	M	A	M	J	J	A	S	O	N	D
---	---	---	---	---	---	---	---	---	---	---	---

Other Order Plants §1000.8(a)

Federal Order #1

H. P. Hood, Inc. Oneida, New York	X	X	X	X	X	X	X	X	X	X	X
H. P. Hood, Inc. Winchester, Virginia	X	X	X	X	X	X	X	X	X	X	X
Midlands Farms, Inc. Menands, New York					X						
Stueben Foods Elma, New York	X	X	X	X	X	X	X	X	X	X	X

Federal Order #5

Milkco Inc. Asheville, North Carolina	X	X	X	X	X	X	X	X	X	X	X
Regis Milk Company Charleston, South Carolina	X	X	X	X	X	X	X	X	X	X	X
White Wave Foods Mount Crawford, Virginia	X	X	X	X	X	X	X	X	X	X	X

Federal Order #7

Barber Pure Milk Company Birmingham, Alabama	X	X	X	X	X	X	X	X	X	X	X
Country Delite Farms Nashville, Tennessee	X	X	X	X	X	X	X	X	X	X	X
Dairy Fresh of Alabama, LLC Cowarts, Alabama	X	X	X	X	X	X	X	X	X	X	X
Flagship Atlanta Dairy, LLC Atlanta, Georgia			X		X						
Jasper Products, LLC Joplin, Missouri									X		
Morningstar Foods/ dba Milk Products Decatur, Alabama	X	X	X	X	X						
Morningstar Foods Murray, Kentucky	X	X	X	X	X	X	X	X	X	X	X

**FLORIDA MARKETING AREA
FEDERAL ORDER NO. 6
NONPOOL PLANTS WITH ROUTE DISPOSITION IN THE AREA - 2006**

	J	F	M	A	M	J	J	A	S	O	N	D
Pet Dairies * Baxley, Georgia	X	X	X	X	X	X	X	X	X	X	X	X
Publix Supermarkets, Inc. Atlanta, Georgia	X	X	X	X	X	X	X	X	X	X	X	X
Turner Holdings LLC/Coleman Dairy Little Rock, Arkansas	X	X	X	X	X	X	X	X	X	X	X	X
Universal Food and Beverage Savannah, Georgia										X		

Federal Order #30

Lifeway Foods, Inc. Morton Grove, Illinois	X	X	X	X	X	X	X	X	X	X	X	X
Pride of Main Street Dairy, LLC Sauk Centre, Minnesota	X	X	X	X								
Schroeder Milk Company, Inc. Maplewood, Minnesota	X	X		X	X	X	X	X	X			

Federal Order #33

Jasper Products, LLC Joplin, Missouri									X			
Marburger Farm Dairy Evans City, Pennsylvania	X	X	X	X	X	X	X	X	X	X	X	X
Parmalat-White Knight Wyoming, Michigan	X	X	X	X	X	X	X	X	X	X	X	X
Smiths Dairy Products Richmond, Indiana	X	X	X	X	X	X	X	X	X	X	X	X
Superior Dairies Saginaw, Michigan											X	X

Federal Order #126

Promised Land Dairy Floresville, Texas	X	X	X	X	X	X	X	X	X	X	X	X
---	---	---	---	---	---	---	---	---	---	---	---	---

Federal Order #131

Shamrock Foods Company Phoenix, Arizona	X	X	X	X	X	X	X	X	X	X	X	X
--	---	---	---	---	---	---	---	---	---	---	---	---

**FLORIDA MARKETING AREA
FEDERAL ORDER NO. 6
NONPOOL PLANTS WITH ROUTE DISPOSITION IN THE AREA - 2006**

J	F	M	A	M	J	J	A	S	O	N	D
---	---	---	---	---	---	---	---	---	---	---	---

Exempt Distributing Plants §1000.8(e)

Golden Fleece Lecanto, Florida	X	X	X	X	X	X	X	X	X	X	X	X
Kurtz & Sons Dairy Live Oak, Florida	X	X	X	X	X	X	X	X	X	X	X	X
M & B Dairy Products Tampa, Florida	X	X	X	X	X	X	Changed to FO 6					

Partially Regulated Distributing Plants §1000.8(c)

Alta Dena Dairy City of Industry, California	X	X	X	X	X	X	X	X	X	X	X	X
Cacique Company City of Industry, California	X	X	X	X	X	X	X	X	X	X	X	X
Dannon Milk Products Fort Worth, Texas	X	X	X	X	X	X	X	X	X	X	X	X
Dannon Milk Products Minster, Ohio	X	X	X	X	X	X	X	X	X	X	X	X
Dannon Milk Products West Jordan, Utah	X	X	X	X	X	X	X	X	X	X	X	X
Gossner Foods Logan, Utah	X	X	X	X	X	X	X	X	X	X	X	X
Kohler Mix Specialty White Bear Lake, Minnesota	X	X	X	X	X	X	X	X	X	X	X	X
Jasper Products, LLC Joplin, Missouri	X	X	X	X	X	X	X	X	Other Order		X	X
Morningstar Foods Sulphur Springs, Texas	X	X	X	X	X	X	X	X	X	X	X	X

Producer-Handler Plants §1000.8(b)

Aurora Organic Dairy Platteville, Colorado	X	X	X	X	X	X	X	X	X	X	X	X
---	---	---	---	---	---	---	---	---	---	---	---	---