



United States Department of Agriculture

Agricultural Marketing Service - Dairy Programs

**Southeast Marketing Area
Federal Order No. 7**

2004 ANNUAL STATISTICS

Sue L. Mosley
Market Administrator
P.O. Box 491778
Lawrenceville, Georgia 30049

EXHIBIT

14

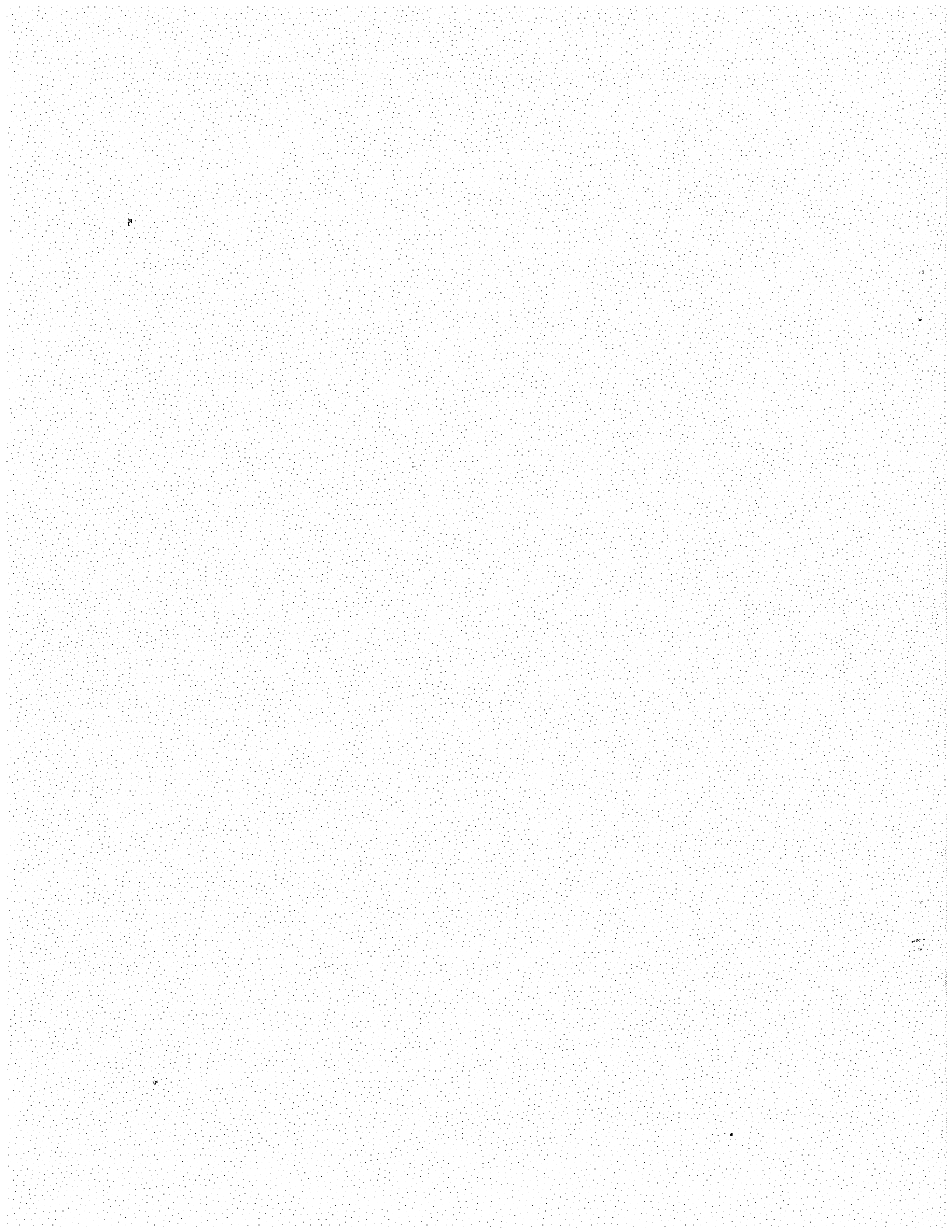


TABLE OF CONTENTS

Southeast Marketing Area Map	1
Receipts and Classification of Producer Milk	2
Receipts and Classification of Other Source Milk, Overages, and Opening Inventories	3
Classification of Total Receipts	4
Class I Utilization by Pool Handlers	5
Total Class I Route Disposition by Pool Plants	6
Total Class I Route Disposition Inside the Marketing Area	7
Class II Utilization by Pool Handlers	8
Class III Utilization by Pool Handlers	9
Class IV Utilization by Pool Handlers	10
Announced Federal Order Class and Uniform Prices	11
NASS Dairy Product Price Averages Used In Federal Milk Order Price Formulas	12
Producer Milk and Number of Producers by State and County - May 2004.....	13
Producer Milk and Number of Producers by State and County - December 2004.....	20
Transportation Credit Balancing Fund Summary.....	26
2004 Pool Handlers	27
2004 Nonpool Handlers with Route Disposition in the Marketing Area	30

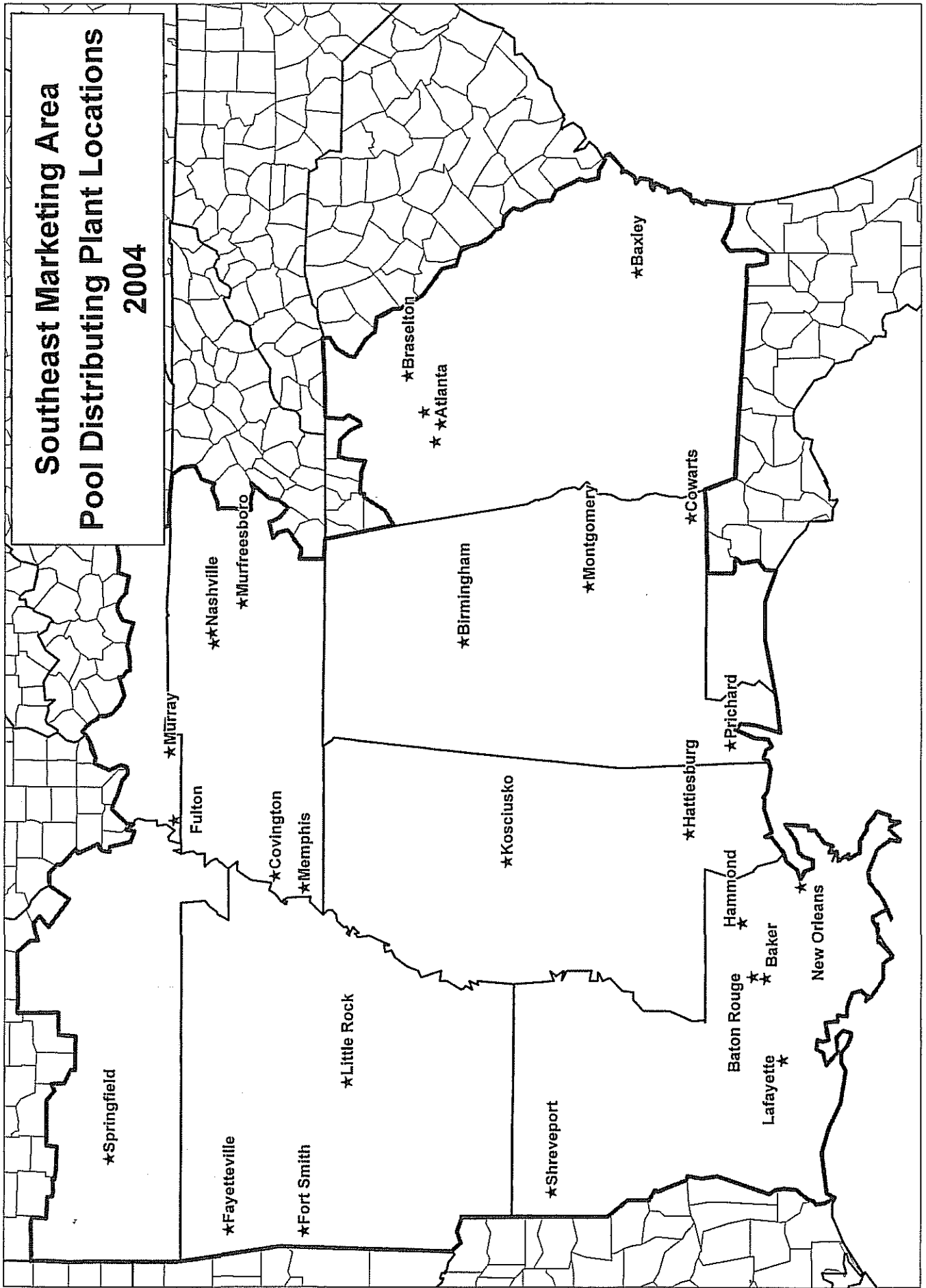
The data presented herein represents a compilation of general information pertaining to the marketing of milk in the Southeast Marketing Area during 2004. Except for the corrections of mathematical and other obvious errors, the data presented were taken from reports of receipts and utilization, payroll reports, and reports of nonpool handlers that were submitted to the office of the Market Administrator as well as publications released by this office.

This information is prepared pursuant to Section 1000.25 (c)(8) of the General Provisions of Federal Milk Marketing Orders, Part 1000 which is incorporated by reference and made a part of Federal Order Number 7. Part 1000 states that the Market Administrator shall "Prepare and disseminate publicly for the benefit of producers, handlers, and consumers such statistics and other information concerning operation of the order and facts relevant to the provisions thereof (or proposed provisions) as do not reveal confidential information."

The Department of Agriculture (USDA) prohibits discrimination in all its programs on the basis of race, color, national origin, gender, religion, age, disability, political beliefs, sexual orientation, and marital or familial status. (Not all prohibited bases apply to all programs.) Persons with disabilities who require alternative means for communication of program information (Braille, large print, audiotape, etc.) should contact USDA's TARGET Center at (202) 720-2600 (voice and TDD). To file a complaint, write USDA, Director, Office of Civil Rights; Room 326W, Jamie L. Whitten Building, 1400 Independence Avenue SW, Washington, D.C. 20250-9410, or call (202) 720-5964 (voice and TDD). USDA is an equal opportunity provider and employer.



Southeast Marketing Area Pool Distributing Plant Locations 2004



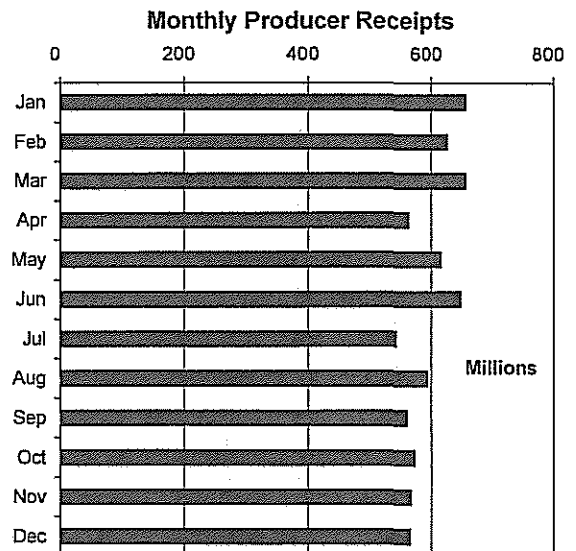
**SOUTHEAST MARKETING AREA
FEDERAL ORDER NO. 7**

RECEIPTS AND CLASSIFICATION OF PRODUCER MILK AND BUTTERFAT

2004	CLASS I			CLASS II		
	PRODUCT POUNDS	%	BUTTERFAT POUNDS	PRODUCT POUNDS	%	BUTTERFAT POUNDS
January	412,319,938	62.89	8,831,174	64,742,119	9.87	5,333,936
February	365,247,568	58.32	7,752,942	67,197,553	10.73	5,436,318
March	401,134,305	61.15	8,492,801	78,229,727	11.92	5,779,654
April	390,524,980	69.46	8,261,266	74,196,191	13.20	5,499,717
May	354,867,884	57.62	7,642,267	85,576,347	13.89	5,826,677
June	346,813,429	53.56	7,733,951	90,522,210	13.98	6,129,062
July	372,617,123	68.71	8,303,802	61,455,160	11.33	5,517,237
August	401,050,392	67.56	8,508,895	75,420,523	12.71	6,075,059
September	393,789,636	70.36	8,308,931	63,784,400	11.40	5,586,317
October	395,196,799	68.94	8,441,868	66,827,017	11.66	5,364,369
November	405,676,071	71.59	8,960,382	58,889,354	10.39	5,080,970
December	400,809,887	70.90	9,023,926	56,627,539	10.02	4,335,102
Total	4,640,048,012	64.77%	100,262,205	843,468,140	11.77%	65,964,418

2004	CLASS III			CLASS IV		
	PRODUCT POUNDS	%	BUTTERFAT POUNDS	PRODUCT POUNDS	%	BUTTERFAT POUNDS
January	103,943,943	15.85	4,920,033	74,693,057	11.39	5,520,315
February	110,869,899	17.70	4,819,775	82,954,928	13.25	5,369,245
March	132,948,975	20.26	5,847,292	43,776,406	6.67	3,575,331
April	13,399,219	2.38	1,213,144	84,104,282	14.96	5,025,870
May	71,572,916	11.62	3,402,346	103,918,872	16.87	4,856,702
June	90,316,717	13.95	3,960,298	119,821,060	18.51	4,999,363
July	75,288,875	13.88	3,233,842	32,950,589	6.08	2,211,005
August	65,465,086	11.03	2,970,569	51,657,225	8.70	3,716,790
September	58,719,101	10.49	2,718,364	43,399,587	7.75	3,786,933
October	65,141,200	11.37	3,286,864	45,997,775	8.03	4,347,047
November	69,594,808	12.28	3,289,413	32,513,050	5.74	3,909,289
December	62,262,105	11.01	2,945,281	45,607,444	8.07	5,035,811
Total	919,522,844	12.83%	42,607,221	761,394,275	10.63%	52,353,701

2004	TOTAL PRODUCER RECEIPTS		
	PRODUCT POUNDS	%	BUTTERFAT POUNDS
January	655,699,057	100.00	24,605,458
February	626,269,948	100.00	23,378,280
March	656,089,413	100.00	23,695,078
April	562,224,672	100.00	19,999,997
May	615,936,019	100.00	21,727,992
June	647,473,416	100.00	22,822,674
July	542,311,747	100.00	19,265,886
August	593,593,226	100.00	21,271,313
September	559,692,724	100.00	20,400,545
October	573,162,791	100.00	21,440,148
November	566,673,283	100.00	21,240,054
December	565,306,975	100.00	21,340,120
Total	7,164,433,271	100.00%	261,187,545



**SOUTHEAST MARKETING AREA
FEDERAL ORDER NO. 7**

**RECEIPTS AND CLASSIFICATION OF OTHER SOURCE MILK,
OVERAGES, AND OPENING INVENTORIES**

2004	<u>OTHER SOURCE MILK</u>	<u>OVERAGES</u>	<u>OPENING INVENTORIES</u>	<u>TOTAL</u>
January	17,627,483	3,225	46,347,898	63,978,606
February	15,463,706	12,160	46,694,687	62,170,553
March	18,277,031	28,128	56,945,047	75,250,206
April	13,970,285	5,075	52,652,361	66,627,721
May	23,341,763	2,095	48,245,549	71,589,407
June	19,676,018	21,501	45,176,575	64,874,094
July	22,374,762	2,132	48,545,488	70,922,382
August	20,734,722	0	45,097,213	65,831,935
September	25,312,894	25,557	48,884,433	74,222,884
October	24,465,648	0	52,508,919	76,974,567
November	21,527,611	0	58,085,365	79,612,976
December	20,634,825	201,288	51,827,516	72,663,629
Total	243,406,748	301,161	601,011,051	844,718,960

AS CLASSIFIED

2004	<u>CLASS I</u>	<u>CLASS II</u>	<u>CLASS III</u>	<u>CLASS IV</u>
January	37,032,500	3,095,439	2,947,421	20,903,246
February	36,931,168	3,467,470	2,592,092	19,179,823
March	37,085,496	5,323,972	2,944,555	29,896,183
April	37,807,573	6,183,342	511,101	22,125,705
May	46,022,439	3,770,175	2,772,706	19,024,087
June	30,903,520	5,762,308	3,471,935	24,736,331
July	30,752,818	9,271,702	2,789,391	28,108,471
August	35,885,391	7,925,359	2,875,168	19,146,017
September	45,717,814	8,938,501	2,651,976	16,914,593
October	45,419,715	5,311,596	2,327,034	23,916,222
November	40,820,434	5,940,505	2,744,608	30,107,429
December	44,783,175	4,908,037	2,385,023	20,587,394
Total	469,162,043	69,898,406	31,013,010	274,645,501

**SOUTHEAST MARKETING AREA
FEDERAL ORDER NO. 7**

CLASSIFICATION OF TOTAL RECEIPTS

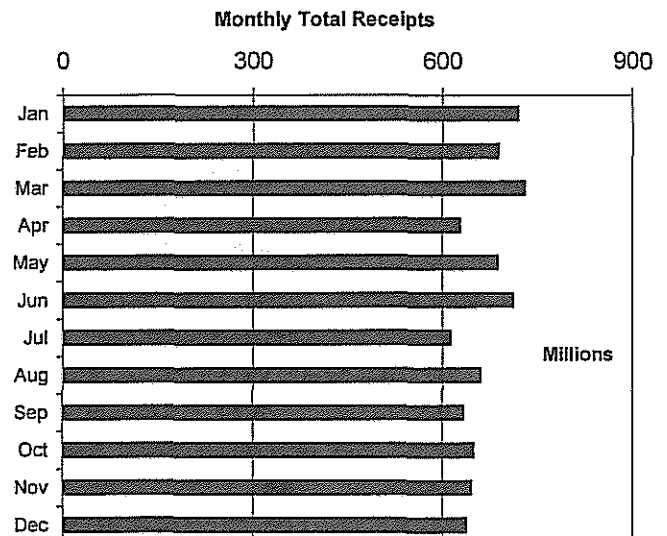
2004	CLASS I		
	PRODUCT POUNDS	BUTTERFAT POUNDS	BUTTERFAT TEST
January	449,352,438	9,647,648	2.15%
February	402,178,736	8,536,051	2.12%
March	438,219,801	9,285,630	2.12%
April	428,332,553	9,065,800	2.12%
May	400,890,323	8,621,775	2.15%
June	377,716,949	8,413,974	2.23%
July	403,369,941	8,968,329	2.22%
August	436,935,783	9,284,101	2.12%
September	439,507,450	9,263,534	2.11%
October	440,616,514	9,400,152	2.13%
November	446,496,505	9,846,940	2.21%
December	445,593,062	10,009,757	2.25%
Total	5,109,210,055	110,343,691	2.16%

2004	CLASS II		
	PRODUCT POUNDS	BUTTERFAT POUNDS	BUTTERFAT TEST
January	67,837,558	5,613,578	8.28%
February	70,665,023	5,793,598	8.20%
March	83,553,699	6,272,266	7.51%
April	80,379,533	5,890,709	7.33%
May	89,346,522	6,259,070	7.01%
June	96,284,518	6,826,891	7.09%
July	70,726,862	6,094,327	8.62%
August	83,345,882	6,590,364	7.91%
September	72,722,901	6,010,495	8.26%
October	72,138,613	5,822,919	8.07%
November	64,829,859	5,915,240	9.12%
December	61,535,576	4,999,597	8.12%
Total	913,366,546	72,089,054	7.89%

2004	CLASS III		
	PRODUCT POUNDS	BUTTERFAT POUNDS	BUTTERFAT TEST
January	106,891,364	5,035,743	4.71%
February	113,461,991	4,944,739	4.36%
March	135,893,530	5,994,209	4.41%
April	13,910,320	1,264,945	9.09%
May	74,345,622	3,525,276	4.74%
June	93,788,652	4,084,004	4.35%
July	78,078,266	3,342,954	4.28%
August	68,340,254	3,086,454	4.52%
September	61,371,077	2,896,902	4.72%
October	67,468,234	3,377,081	5.01%
November	72,339,416	3,379,271	4.67%
December	64,647,128	3,054,881	4.73%
Total	950,535,854	43,986,459	4.63%

2004	CLASS IV		
	PRODUCT POUNDS	BUTTERFAT POUNDS	BUTTERFAT TEST
January	95,596,303	6,555,172	6.86%
February	102,134,751	6,453,201	6.32%
March	73,672,589	4,838,627	6.57%
April	106,229,987	6,025,822	5.67%
May	122,942,959	5,787,604	4.71%
June	144,557,391	6,159,896	4.26%
July	61,059,060	3,408,525	5.58%
August	70,803,242	4,623,961	6.53%
September	60,314,180	4,802,297	7.96%
October	69,913,997	5,598,394	8.01%
November	62,620,479	5,247,925	8.38%
December	66,194,838	6,088,203	9.20%
Total	1,036,039,776	65,589,627	6.33%

2004	TOTAL RECEIPTS		
	PRODUCT POUNDS	BUTTERFAT POUNDS	BUTTERFAT TEST
January	719,677,663	26,852,141	3.73%
February	688,440,501	25,727,589	3.74%
March	731,339,619	26,390,732	3.61%
April	628,852,393	22,247,276	3.54%
May	687,525,426	24,193,725	3.52%
June	712,347,510	25,484,765	3.58%
July	613,234,129	21,814,135	3.56%
August	659,425,161	23,584,880	3.58%
September	633,915,608	22,973,228	3.62%
October	650,137,358	24,198,546	3.72%
November	646,286,259	24,389,376	3.77%
December	637,970,604	24,152,438	3.79%
Total	8,009,152,231	292,008,831	3.65%



**SOUTHEAST MARKETING AREA
FEDERAL ORDER NO. 7**

TOTAL CLASS I UTILIZATION BY POOL HANDLERS

2004	<u>TOTAL CLASS I ROUTE DISPOSITION</u>	<u>TRANSFERRED OR DIVERTED TO NONPOOL PLANTS</u>	<u>ENDING INVENTORY</u>	<u>CLASS I SHRINKAGE</u>
January	408,578,759	6,690,744	31,507,007	2,575,928
February	361,852,253	7,985,164	29,949,373	2,391,946
March	398,156,593	7,509,807	30,472,483	2,080,918
April	379,817,580	8,161,695	38,325,268	2,028,010
May	364,699,522	8,013,830	25,591,298	2,585,673
June	343,695,475	7,646,163	24,861,383	1,513,928
July	365,011,088	7,259,613	29,127,345	1,971,895
August	391,863,956	7,260,582	34,657,810	3,153,435
September	394,224,870	8,929,614	33,699,558	2,653,408
October	398,811,828	7,383,133	31,704,002	2,717,551
November	399,342,576	8,554,124	34,888,549	3,711,256
December	399,700,226	7,964,890	35,407,083	2,520,863
Total	4,605,754,726	93,359,359	380,191,159	29,904,811

TOTAL CLASS I UTILIZATION

2004	<u>PRODUCT POUNDS</u>	<u>BUTTERFAT POUNDS</u>	<u>BUTTERFAT TEST</u>	<u>DAILY AVERAGE UTILIZATION</u>
January	449,352,438	9,647,648	2.15%	14,495,240
February	402,178,736	8,536,051	2.12%	13,868,232
March	438,219,801	9,285,630	2.12%	14,136,123
April	428,332,553	9,065,800	2.12%	14,277,752
May	400,890,323	8,621,775	2.15%	12,931,946
June	377,716,949	8,413,974	2.23%	12,590,565
July	403,369,941	8,968,329	2.22%	13,011,934
August	436,935,783	9,284,101	2.12%	14,094,703
September	439,507,450	9,263,534	2.11%	14,650,248
October	440,616,514	9,400,152	2.13%	14,213,436
November	446,496,505	9,846,940	2.21%	14,883,217
December	445,593,062	10,009,757	2.25%	14,373,970
Total	5,109,210,055	110,343,691	2.16%	13,959,590

**SOUTHEAST MARKETING AREA
FEDERAL ORDER NO. 7**

TOTAL DISPOSITION ON ROUTES INSIDE THE MARKETING AREA BY POOL PLANTS

2004	WHOLE MILK	FAT FREE MILK	LOW FAT MILK	REDUCED FAT MILK	CULTURED MILK	FLAVORED MILK&DRINKS	TOTAL IN AREA
January	137,974,610	40,204,245	23,255,219	102,031,337	8,786,917	35,007,765	347,260,093
February	121,232,203	36,722,827	22,387,837	90,288,783	7,901,004	30,218,163	308,750,817
March	132,794,220	40,446,198	23,027,105	99,156,592	8,727,415	35,601,368	339,752,898
April	125,926,048	38,688,576	21,790,802	95,615,495	8,324,323	32,506,531	322,851,775
May	123,543,974	38,770,811	21,925,964	93,720,425	7,676,989	25,997,937	311,636,100
June	121,997,097	36,872,248	20,207,449	91,962,679	7,393,261	13,767,172	292,199,906
July	129,135,108	40,002,828	21,645,748	98,667,399	7,828,382	13,071,829	310,351,294
August	128,742,442	40,594,642	23,377,838	103,100,713	7,746,583	31,397,668	334,959,886
September	126,174,478	40,210,885	24,829,511	103,099,311	7,666,013	33,941,725	335,921,923
October	126,800,302	41,145,342	24,167,251	104,702,160	7,977,978	36,071,381	340,864,414
November	131,869,122	39,897,198	23,373,819	98,550,953	9,511,716	37,307,130	340,509,938
December	131,455,463	39,758,837	23,141,974	106,111,084	8,947,965	32,725,285	342,140,608
Total	1,537,645,067	473,314,637	273,130,517	1,187,006,931	98,488,546	357,613,954	3,927,199,652

TOTAL DISPOSITION ON ROUTES OUTSIDE THE MARKETING AREA BY POOL PLANTS

2004	WHOLE MILK	FAT FREE MILK	LOW FAT MILK	REDUCED FAT MILK	CULTURED MILK	FLAVORED MILK&DRINKS	TOTAL OUT OF AREA
January	22,122,789	7,990,702	4,747,001	20,114,214	999,424	5,344,536	61,318,666
February	19,023,007	7,128,694	4,155,203	17,344,093	840,541	4,609,898	53,101,436
March	20,806,824	7,735,666	4,644,246	19,013,813	943,006	5,260,140	58,403,695
April	20,075,506	7,527,432	4,432,642	18,690,480	942,593	5,297,152	56,965,805
May	18,764,639	7,342,172	4,223,518	17,741,968	859,460	4,131,665	53,063,422
June	18,940,962	7,303,893	3,987,797	17,989,951	849,505	2,423,461	51,495,569
July	19,984,255	7,652,669	4,225,106	19,329,762	894,003	2,573,999	54,659,794
August	19,593,213	7,725,211	4,482,577	19,522,251	913,247	4,667,571	56,904,070
September	19,429,364	7,858,654	4,730,519	19,727,067	872,068	5,685,275	58,302,947
October	19,065,517	7,884,514	4,671,607	19,570,026	953,063	5,802,687	57,947,414
November	19,382,115	7,755,860	4,590,960	19,794,776	1,056,847	6,252,080	58,832,638
December	19,876,036	7,496,579	4,367,823	19,734,282	936,470	5,148,428	57,559,618
Total	237,064,227	91,402,046	53,258,999	228,572,683	11,060,227	57,196,892	678,555,074

TOTAL DISPOSITION ON ROUTES IN AND OUT OF THE MARKETING AREA BY POOL PLANTS

2004	WHOLE MILK	FAT FREE MILK	LOW FAT MILK	REDUCED FAT MILK	CULTURED MILK	FLAVORED MILK&DRINKS	TOTAL SALES
January	160,097,399	48,194,947	28,002,220	122,145,551	9,786,341	40,352,301	408,578,759
February	140,255,210	43,851,521	26,543,040	107,632,876	8,741,545	34,828,061	361,852,253
March	153,601,044	48,181,864	27,671,351	118,170,405	9,670,421	40,861,508	398,156,593
April	146,001,554	46,216,008	26,223,444	114,305,975	9,266,916	37,803,683	379,817,580
May	142,308,613	46,112,983	26,149,482	111,462,393	8,536,449	30,129,602	364,699,522
June	140,938,059	44,176,141	24,195,246	109,952,630	8,242,766	16,190,633	343,695,475
July	149,119,363	47,655,497	25,870,854	117,997,161	8,722,385	15,645,828	365,011,088
August	148,335,655	48,319,853	27,860,415	122,622,964	8,659,830	36,065,239	391,863,956
September	145,603,842	48,069,539	29,560,030	122,826,378	8,538,081	39,627,000	394,224,870
October	145,865,819	49,029,856	28,838,858	124,272,186	8,931,041	41,874,068	398,811,828
November	151,251,237	47,653,058	27,964,779	118,345,729	10,568,563	43,559,210	399,342,576
December	151,331,499	47,255,416	27,509,797	125,845,366	9,884,435	37,873,713	399,700,226
Total	1,774,709,294	564,716,683	326,389,516	1,415,579,614	109,548,773	414,810,846	4,605,754,726

**SOUTHEAST MARKETING AREA
FEDERAL ORDER NO. 7**

DISPOSITION ON ROUTES INSIDE THE MARKETING AREA BY NONPOOL PLANTS

2004	WHOLE MILK	FAT FREE MILK	LOW FAT MILK	REDUCED FAT MILK	CULTURED MILK	FLAVORED MILK&DRINKS	TOTAL NONPOOL
January	28,513,527	8,305,382	4,162,114	25,607,875	1,636,231	7,548,151	75,773,280
February	25,487,426	7,544,284	4,155,113	22,865,638	1,444,875	7,949,622	69,446,958
March	27,963,965	8,583,016	4,561,292	25,574,946	1,566,671	8,935,370	77,185,260
April	26,606,406	8,371,176	4,733,756	24,771,825	1,426,257	8,804,916	74,714,336
May	25,323,944	8,001,028	4,473,587	23,223,456	1,448,504	7,156,715	69,627,234
June	25,308,307	7,746,375	4,176,012	23,431,831	1,389,605	5,633,223	67,685,353
July	25,587,674	8,172,229	4,275,287	23,727,257	1,476,951	5,840,488	69,079,886
August	24,669,018	8,023,047	4,486,200	23,008,137	1,491,587	9,224,847	70,902,836
September	24,526,078	7,110,099	4,503,891	23,671,123	1,511,358	10,073,711	71,396,260
October	24,400,979	8,089,337	4,216,070	24,191,784	1,515,233	8,801,752	71,215,155
November	23,746,581	7,582,349	4,214,209	24,068,846	1,751,109	9,447,965	70,811,059
December	25,609,046	7,704,016	4,056,949	24,204,946	1,691,819	7,880,372	71,147,148
Total	307,742,951	95,232,338	52,014,480	288,347,664	18,350,200	97,297,132	858,984,765

DISPOSITION ON ROUTES INSIDE THE MARKETING AREA BY POOL PLANTS

2004	WHOLE MILK	FAT FREE MILK	LOW FAT MILK	REDUCED FAT MILK	CULTURED MILK	FLAVORED MILK&DRINKS	TOTAL POOL
January	137,974,610	40,204,245	23,255,219	102,031,337	8,786,917	35,007,765	347,260,093
February	121,232,203	36,722,827	22,387,837	90,288,783	7,901,004	30,218,163	308,750,817
March	132,794,220	40,446,198	23,027,105	99,156,592	8,727,415	35,601,368	339,752,898
April	125,926,048	38,688,576	21,790,802	95,615,495	8,324,323	32,506,531	322,851,775
May	123,543,974	38,770,811	21,925,964	93,720,425	7,676,989	25,997,937	311,636,100
June	121,997,097	36,872,248	20,207,449	91,962,679	7,393,261	13,767,172	292,199,906
July	129,135,108	40,002,828	21,645,748	98,667,399	7,828,382	13,071,829	310,351,294
August	128,742,442	40,594,642	23,377,838	103,100,713	7,746,583	31,397,668	334,959,886
September	126,174,478	40,210,885	24,829,511	103,099,311	7,666,013	33,941,725	335,921,923
October	126,800,302	41,145,342	24,167,251	104,702,160	7,977,978	36,071,381	340,864,414
November	131,869,122	39,897,198	23,373,819	98,550,953	9,511,716	37,307,130	340,509,938
December	131,455,463	39,758,837	23,141,974	106,111,084	8,947,965	32,725,285	342,140,608
Total	1,537,645,067	473,314,637	273,130,517	1,187,006,931	98,488,546	357,613,954	3,927,199,652

TOTAL DISPOSITION ON ROUTES INSIDE THE MARKETING AREA

2004	WHOLE MILK	FAT FREE MILK	LOW FAT MILK	REDUCED FAT MILK	CULTURED MILK	FLAVORED MILK&DRINKS	TOTAL SALES
January	166,488,137	48,509,627	27,417,333	127,639,212	10,423,148	42,555,916	423,033,373
February	146,719,629	44,267,111	26,542,950	113,154,421	9,345,879	38,167,785	378,197,775
March	160,758,185	49,029,214	27,588,397	124,731,538	10,294,086	44,536,738	416,938,158
April	152,532,454	47,059,752	26,524,558	120,387,320	9,750,580	41,311,447	397,566,111
May	148,867,918	46,771,839	26,399,551	116,943,881	9,125,493	33,154,652	381,263,334
June	147,305,404	44,618,623	24,383,461	115,394,510	8,782,866	19,400,395	359,885,259
July	154,722,782	48,175,057	25,921,035	122,394,656	9,305,333	18,912,317	379,431,180
August	153,411,460	48,617,689	27,864,038	126,108,850	9,238,170	40,622,515	405,862,722
September	150,700,556	47,320,984	29,333,402	126,770,434	9,177,371	44,015,436	407,318,183
October	151,201,281	49,234,679	28,383,321	128,893,944	9,493,211	44,873,133	412,079,569
November	155,615,703	47,479,547	27,588,028	122,619,799	11,262,825	46,755,095	411,320,997
December	157,064,509	47,462,853	27,198,923	130,316,030	10,639,784	40,605,657	413,287,756
Total	1,845,388,018	568,546,975	325,144,997	1,475,354,595	116,838,746	454,911,086	4,786,184,417

**SOUTHEAST MARKETING AREA
FEDERAL ORDER NO. 7**

TOTAL CLASS II UTILIZATION BY POOL HANDLERS

2004	NONFLUID USED TO PRODUCE	SHRINKAGE	TRANSFERRED OR DIVERTED TO NONPOOL PLANTS	USED TO PRODUCE/ OTHER USES
January	1,560,100	0	48,209,620	18,067,838
February	1,433,162	0	51,089,394	18,142,467
March	1,641,211	0	59,946,310	21,966,178
April	1,773,352	0	56,074,914	22,531,267
May	1,790,998	0	64,078,481	23,477,043
June	1,770,417	0	67,502,690	27,011,411
July	1,947,154	0	42,941,671	25,838,037
August	1,893,991	0	55,675,084	25,776,807
September	1,609,729	0	48,097,267	23,015,905
October	1,493,998	0	49,004,543	21,640,072
November	1,219,966	0	41,412,507	22,197,386
December	1,242,736	0	40,208,876	20,083,964
Total	19,376,814	0	624,241,357	269,748,375

TOTAL CLASS II UTILIZATION

2004	PRODUCT POUNDS	BUTTERFAT POUNDS	BUTTERFAT TEST	DAILY UTILIZATION
January	67,837,558	5,613,578	8.28%	2,188,308
February	70,665,023	5,793,598	8.20%	2,436,725
March	83,553,699	6,272,266	7.51%	2,695,281
April	80,379,533	5,890,709	7.33%	2,679,318
May	89,346,522	6,259,070	7.01%	2,882,146
June	96,284,518	6,826,891	7.09%	3,209,484
July	70,726,862	6,094,327	8.62%	2,281,512
August	83,345,882	6,590,364	7.91%	2,688,577
September	72,722,901	6,010,495	8.26%	2,424,097
October	72,138,613	5,822,919	8.07%	2,327,052
November	64,829,859	5,915,240	9.12%	2,160,995
December	61,535,576	4,999,597	8.12%	1,985,019
Total	913,366,546	72,089,054	7.89%	2,495,537

**SOUTHEAST MARKETING AREA
FEDERAL ORDER NO. 7**

TOTAL CLASS III UTILIZATION BY POOL HANDLERS

2004	<u>SHRINKAGE 1/</u>	<u>TRANSFERRED OR DIVERTED TO NONPOOL PLANTS</u>	<u>USED TO PRODUCE/ OTHER USES 2/</u>
January	0	106,891,364	0
February	7,617,246	101,322,257	4,522,488
March	0	135,893,530	0
April	0	13,910,320	0
May	0	74,345,622	0
June	0	93,788,652	0
July	0	78,078,266	0
August	0	68,340,254	0
September	0	61,371,077	0
October	0	67,468,234	0
November	0	72,339,416	0
December	0	64,647,128	0
Total	7,617,246	938,396,120	4,522,488

TOTAL CLASS III UTILIZATION

2004	<u>PRODUCT POUNDS</u>	<u>BUTTERFAT POUNDS</u>	<u>BUTTERFAT TEST</u>	<u>DAILY AVERAGE UTILIZATION</u>
January	106,891,364	5,035,743	4.71%	3,448,109
February	113,461,991	4,944,739	4.36%	3,912,482
March	135,893,530	5,994,209	4.41%	4,383,662
April	13,910,320	1,264,945	9.09%	463,677
May	74,345,622	3,525,276	4.74%	2,398,246
June	93,788,652	4,084,004	4.35%	3,126,288
July	78,078,266	3,342,954	4.28%	2,518,654
August	68,340,254	3,086,454	4.52%	2,204,524
September	61,371,077	2,896,902	4.72%	2,045,703
October	67,468,234	3,377,081	5.01%	2,176,395
November	72,339,416	3,379,271	4.67%	2,411,314
December	64,647,128	3,054,881	4.73%	2,085,391
Total	950,535,854	43,986,459	4.63%	2,597,092

1/ Pursuant § 1000.43 (b) (1). Assigned to lowest priced class.

2/ Pursuant § 1000.40 (e). Other Uses assigned to lowest priced class.

**SOUTHEAST MARKETING AREA
FEDERAL ORDER NO. 7**

TOTAL CLASS IV UTILIZATION BY POOL HANDLERS

2004	<u>ENDING INVENTORY</u>	<u>NONFLUID USED TO FORTIFY</u>	<u>SHRINKAGE 1/</u>	<u>TRANSFERRED OR DIVERTED TO NONPOOL PLANTS</u>	<u>USED TO PRODUCE/ OTHER USES 2/</u>
January	15,554,741	1,651,109	7,178,455	59,695,820	11,516,178
February	26,995,674	1,542,669	0	70,772,456	2,823,952
March	23,241,345	1,752,954	7,721,126	29,652,408	11,304,756
April	9,810,402	1,670,228	7,201,533	82,703,745	4,844,079
May	20,275,248	1,555,480	6,978,446	73,911,032	20,222,753
June	23,684,105	1,435,517	5,664,687	94,126,874	19,646,208
July	15,923,896	1,640,402	6,822,149	21,209,116	15,463,497
August	14,226,623	1,649,754	7,785,060	39,980,484	7,161,321
September	18,809,361	1,729,312	7,180,639	26,377,070	6,217,798
October	26,381,363	2,008,778	7,815,710	28,865,569	4,842,577
November	16,938,967	4,264,331	7,774,203	28,628,819	5,014,159
December	11,230,686	3,589,190	6,625,013	34,767,091	9,982,858
Total	223,072,411	24,489,724	78,747,021	590,690,484	119,040,136

TOTAL CLASS IV UTILIZATION

2004	<u>PRODUCT POUNDS</u>	<u>BUTTERFAT POUNDS</u>	<u>BUTTERFAT TEST</u>	<u>DAILY UTILIZATION</u>
January	95,596,303	6,555,172	6.86%	3,083,752
February	102,134,751	6,453,201	6.32%	3,521,888
March	73,672,589	4,838,627	6.57%	2,376,535
April	106,229,987	6,025,822	5.67%	3,541,000
May	122,942,959	5,787,604	4.71%	3,965,902
June	144,557,391	6,159,896	4.26%	4,818,580
July	61,059,060	3,408,525	5.58%	1,969,647
August	70,803,242	4,623,961	6.53%	2,283,976
September	60,314,180	4,802,297	7.96%	2,010,473
October	69,913,997	5,598,394	8.01%	2,255,290
November	62,620,479	5,247,925	8.38%	2,087,349
December	66,194,838	6,088,203	9.20%	2,135,317
Total	1,036,039,776	65,589,627	6.33%	2,830,710

1/ Pursuant § 1000.43 (b) (1). Shrinkage assigned to lowest priced class.

2/ Pursuant § 1000.40 (d) and (e). Used to Produce, Bulk Ending Inventory & NFMP-UTF assigned to Class IV. Other Uses assigned to lowest priced class.

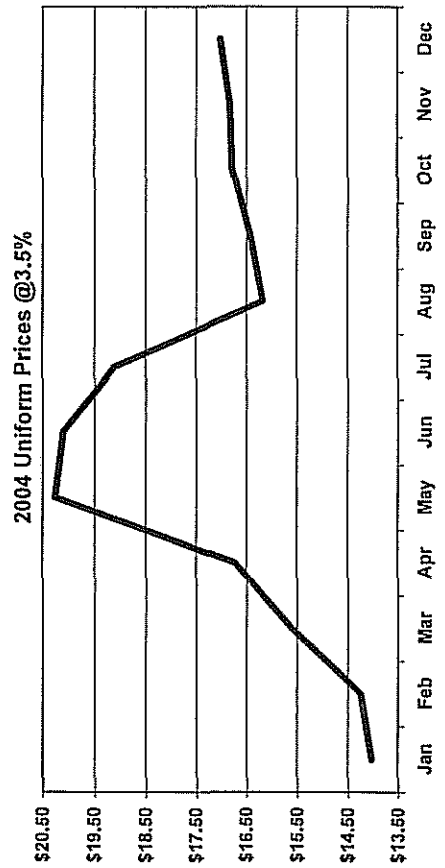
**SOUTHEAST MARKETING AREA
FEDERAL ORDER NO. 7
ANNOUNCED FEDERAL ORDER CLASS & UNIFORM PRICES**

CLASS I*		CLASS II	
2004	Skim	2004	Butterfat*
January	\$10.56	January	\$1.5048
February	\$9.65	February	\$1.8588
March	\$9.06	March	\$2.3883
April	\$9.06	April	\$2.5083
May	\$14.60	May	\$2.4352
June	\$16.08	June	\$2.1838
July	\$14.05	July	\$2.0613
August	\$10.65	August	\$1.8011
September	\$11.06	September	\$1.9424
October	\$11.63	October	\$1.9090
November	\$10.91	November	\$2.0559
December	\$11.22	December	\$2.0436
Average	\$11.54	Average	\$2.0577

CLASS III		CLASS IV	
2004	Skim	2004	Skim
January	\$6.60	January	\$5.94
February	\$5.61	February	\$5.94
March	\$6.38	March	\$5.97
April	\$11.30	April	\$6.03
May	\$12.52	May	\$6.22
June	\$10.43	June	\$6.32
July	\$7.94	July	\$6.34
August	\$8.04	August	\$6.40
September	\$8.23	September	\$6.45
October	\$7.78	October	\$6.38
November	\$8.00	November	\$6.39
December	\$9.34	December	\$6.52
Average	\$8.51	Average	\$6.24

UNIFORM*		Milk @ 3.5%	
2004	Butterfat	2004	Butterfat
January	\$1.4492	January	\$10.97
February	\$1.7481	February	\$12.21
March	\$2.1737	March	\$14.10
April	\$2.4128	April	\$14.57
May	\$2.4460	May	\$14.50
June	\$2.2841	June	\$13.72
July	\$2.0927	July	\$13.31
August	\$1.9285	August	\$12.46
September	\$1.8899	September	\$13.00
October	\$1.9035	October	\$12.81
November	\$2.0125	November	\$13.34
December	\$1.9859	December	\$13.42
Average	\$2.0272	Average	\$13.20

UNIFORM*		Milk @ 3.5%	
2004	Butterfat	2004	Butterfat
January	\$9.27	January	\$11.67
February	\$8.41	February	\$12.90
March	\$8.29	March	\$14.79
April	\$8.58	April	\$15.21
May	\$12.13	May	\$15.03
June	\$12.55	June	\$14.31
July	\$12.20	July	\$14.00
August	\$9.76	August	\$13.13
September	\$10.17	September	\$13.66
October	\$10.48	October	\$13.57
November	\$10.14	November	\$14.09
December	\$10.45	December	\$13.98
Average	\$10.20	Average	\$13.86



* Class 1 and Uniform Prices are at Fulton County (Atlanta), Georgia

**SOUTHEAST MARKETING AREA
FEDERAL ORDER NO. 7**

**NASS DAIRY PRODUCT PRICE AVERAGES USED IN
FEDERAL MILK ORDER PRICE FORMULAS**

Class I (Skim, Bfat), Class II (Skim, Nonfat Solids)

2004	<u>Weeks Ending</u>	<u>Butter</u>	<u>Nonfat Dry Milk</u>	<u>Cheese</u>	<u>Dry Whey</u>
Dollars per pound					
January	12/6,13	1.2219	0.8072	1.3227	0.1967
February	1/10,17	1.3687	0.8051	1.2977	0.1824
March	2/7,14	1.5879	0.8085	1.3054	0.1691
April	3/6,13	1.9921	0.8090	1.4582	0.1706
May	4/10,17	2.1514	0.8179	2.0530	0.2611
June	5/8,15	2.1633	0.8372	2.1838	0.2975
July	6/5,12	1.8723	0.8500	1.8683	0.2942
August	7/10,17	1.8610	0.8552	1.5439	0.2600
September	8/7,14	1.6058	0.8596	1.5047	0.2280
October	9/4,11	1.6746	0.8622	1.5958	0.2155
November	10/9,16	1.7223	0.8626	1.5373	0.2241
December	11/6,13	1.6845	0.8553	1.5481	0.2338

Class II (Bfat), Class III, Class IV, Components

2004	<u>Weeks Ending</u>	<u>Butter</u>	<u>Nonfat Dry Milk</u>	<u>Cheese</u>	<u>Dry Whey</u>
Dollars per pound					
January	1/3,10,17,24	1.3632	0.8062	1.3023	0.1801
February	1/31,2/7,14,21,28	1.6582	0.8064	1.3260	0.1677
March	3/6,13,20,27	2.0994	0.8101	1.5680	0.1817
April	4/3,10,17,24	2.1994	0.8171	2.0520	0.2602
May	5/1,8,15,22,29	2.1385	0.8383	2.1266	0.2992
June	6/5,12,19,26	1.9290	0.8497	1.8411	0.2890
July	7/3,10,17,24	1.8269	0.8513	1.5695	0.2607
August	7/31,8/7,14,21,28	1.6101	0.8584	1.5167	0.2246
September	9/4,11,18,25	1.7278	0.8639	1.5867	0.2162
October	10/2,9,16,23,30	1.7000	0.8565	1.5256	0.2247
November	11/6,13,20,27	1.8224	0.8570	1.5886	0.2367
December	12/4,11,18,25	1.8122	0.8713	1.7146	0.2423

**Producer Milk By County/State
(More Than Two Producers Per County)**

Federal Order No. 7

May 2004

County Name	Code	No. Farms	Total Pounds
Alabama			
* Clay	27	3	437,962
Cleburne	29	3	210,657
Coffee	31	3	1,641,756
Covington	39	3	817,785
Cullman	43	7	2,208,125
Dallas	47	3	353,241
De kalb	49	5	505,125
Elmore	51	4	192,366
Fayette	57	4	794,456
Franklin	59	3	1,206,426
Hale	65	3	585,093
Lamar	75	3	544,572
Lawrence	79	4	290,838
Mobile	97	3	601,937
Morgan	103	5	2,699,188
Tuscaloosa	125	3	368,918
Restricted	999	34	7,157,843
Total for Alabama		<u>93</u>	<u>20,616,288</u>

Arizona
Restricted

Arkansas

Benton	7	26	3,303,931
Boone	9	9	531,410
Carroll	15	15	1,408,704
Cleburne	23	7	1,046,491
Conway	29	18	1,965,793
Faulkner	45	10	2,824,988
Franklin	47	7	960,945
Fulton	49	10	759,859
Izard	65	3	127,026
Logan	83	9	701,824
Lonoke	85	6	1,111,600
Madison	87	16	1,238,016
Searcy	129	15	1,443,427
Stone	137	4	339,062
Van buren	141	14	1,586,431
Washington	143	33	3,675,143
White	145	9	961,101
Yell	149	3	320,617
Restricted	999	25	3,303,223
Total for Arkansas		<u>239</u>	<u>27,609,591</u>

Florida
Restricted

**Producer Milk By County/State
(More Than Two Producers Per County)**

Federal Order No. 7

May 2004

County Name	Code	No. Farms	Total Pounds
Georgia			
Burke	33	7	652,936
Carroll	45	4	346,396
Elbert	105	4	1,850,419
Greene	133	16	4,587,038
Hall	139	4	796,339
Houston	153	4	184,059
Jefferson	163	12	1,681,576
Jenkins	165	6	481,889
Jones	169	4	1,388,705
Lamar	171	4	1,058,531
Macon	193	18	1,394,750
Monroe	207	6	965,127
Morgan	211	35	9,416,879
Oglethorpe	221	4	1,805,734
Polk	233	5	262,070
Putnam	237	38	12,467,246
Sumter	261	3	159,270
Taliaferro	265	5	1,240,621
Troup	285	4	549,076
Walker	295	8	662,658
Warren	301	6	1,590,958
Washington	303	3	891,038
Wilkes	317	9	2,351,010
Restricted	999	48	8,842,934
Total for Georgia		<u>257</u>	<u>55,627,259</u>
Illinois			
Restricted			
Indiana			
Restricted			
Kansas			
Allen	1	8	1,157,708
Anderson	3	12	969,092
Bourbon	11	3	368,128
Brown	13	7	538,906
Crawford	37	4	525,582
Doniphan	43	4	313,013
Douglas	45	9	1,219,608
Franklin	59	18	1,238,046
Geary	61	3	115,389
Greenwood	73	4	682,868
Jackson	85	4	321,878
Johnson	91	5	312,337
Labette	99	6	369,419
Linn	107	6	849,976
Mcpherson	113	4	285,589

**Producer Milk By County/State
 (More Than Two Producers Per County)**

Federal Order No. 7

May 2004

County Name	Code	No. Farms	Total Pounds
Marion	115	12	957,052
Miami	121	5	209,867
Montgomery	125	5	423,903
Morris	127	5	119,015
Nemaha	131	8	736,602
Neosho	133	8	573,665
Osage	139	4	180,565
Reno	155	6	188,733
Restricted	999	17	5,251,115
Total for Kansas		167	17,908,056

Kentucky

Adair	1	22	2,963,210
Allen	3	5	157,401
Ballard	7	3	454,524
Barren	9	64	10,360,794
Carlisle	39	5	541,997
Christian	47	34	2,678,947
Cumberland	57	3	162,417
Edmonson	61	3	47,354
Graves	83	13	1,374,455
Grayson	85	10	778,411
Green	87	3	154,665
Hardin	93	11	1,577,391
Hart	99	14	944,533
Larue	123	3	430,783
Logan	141	24	4,556,364
Mccracken	145	3	246,760
Metcalfe	169	26	1,874,089
Monroe	171	21	1,284,335
Simpson	213	7	1,272,110
Taylor	217	8	642,532
Todd	219	20	2,260,906
Warren	227	33	4,079,403
Restricted	999	10	802,007
Total for Kentucky		345	39,645,388

Louisiana

Beauregard	11	5	554,297
De soto	31	22	4,857,147
East baton rouge	33	3	498,470
East feliciana	37	3	669,751
Sabine	85	5	648,898
St. helena	91	30	4,692,286
Tangipahoa	105	128	17,799,728
Washington	117	98	12,427,174
Restricted	999	17	1,415,681
Total for Louisiana		311	43,563,432

**Producer Milk By County/State
(More Than Two Producers Per County)**

Federal Order No. 7

May 2004

County Name	Code	No. Farms	Total Pounds
Mississippi			
Amite	5	15	2,314,824
Clay	25	3	153,885
Copiah	29	10	1,255,682
Harrison	47	6	373,656
Jones	67	5	869,173
Lawrence	77	6	951,879
Leake	79	4	612,408
Lee	81	3	366,399
Lincoln	85	19	2,627,050
Marion	91	20	3,280,012
Marshall	93	5	1,773,831
Neshoba	99	4	296,745
Newton	101	10	2,117,926
Noxubee	103	8	1,529,963
Pearl river	109	7	516,170
Pike	113	27	3,800,344
Prentiss	117	3	288,150
Stone	131	5	204,413
Tate	137	6	1,355,287
Tippah	139	3	313,348
Walthall	147	41	5,109,584
Winston	159	3	332,523
Restricted	999	31	7,866,570
Total for Mississippi		244	38,309,822
Missouri			
Barry	9	36	4,109,674
Barton	11	5	596,521
Bates	13	15	1,353,814
Benton	15	7	341,893
Camden	29	8	560,007
Cape girardeau	31	7	716,835
Cass	37	9	647,393
Cedar	39	6	520,874
Christian	43	28	2,070,219
Cole	51	4	9,228
Cooper	53	5	637,694
Dade	57	6	427,336
Dallas	59	55	4,760,388
Douglas	67	76	5,867,509
Greene	77	36	3,491,253
Henry	83	4	484,907
Hickory	85	8	778,225
Howell	91	50	4,186,751
Jasper	97	14	1,619,759
Johnson	101	10	724,370
Laclede	105	75	6,703,338

**Producer Milk By County/State
(More Than Two Producers Per County)**

Federal Order No. 7

May 2004

County Name	Code	No. Farms	Total Pounds
Lafayette	107	12	1,176,467
Lawrence	109	56	6,405,909
McDonald	119	11	1,358,118
Moniteau	135	11	66,850
Morgan	141	11	35,742
Newton	145	23	2,308,179
Oregon	149	9	837,320
Ozark	153	38	3,291,351
Perry	157	8	172,629
Pettis	159	6	444,051
Polk	167	54	8,029,598
St. clair	185	4	187,635
Stone	209	25	2,449,242
Taney	213	3	203,795
Texas	215	67	6,429,938
Webster	225	105	9,756,177
Wright	229	173	16,780,003
Restricted	999	21	1,589,210
Total for Missouri		<u>1,101</u>	<u>102,130,202</u>
Nebraska			
Restricted			
New Mexico			
Restricted			
Oklahoma			
Adair	1	54	6,170,471
Cherokee	21	19	2,218,121
Craig	35	7	571,928
Delaware	41	25	2,999,063
Mayes	97	41	4,123,612
Muskogee	101	7	1,538,204
Nowata	105	4	248,048
Ottawa	115	11	1,250,235
Rogers	131	10	645,173
Wagoner	145	5	430,946
Restricted	999	9	5,344,367
Total for Oklahoma		<u>192</u>	<u>25,540,168</u>
South Carolina			
Restricted			
Tennessee			
Bedford	3	11	1,931,117
Bledsoe	7	7	502,672
Bradley	11	16	1,463,398
Cannon	15	10	745,653
Coffee	31	16	2,631,406

**Producer Milk By County/State
(More Than Two Producers Per County)**

Federal Order No. 7

May 2004

County Name	Code	No. Farms	Total Pounds
Cumberland	35	9	2,127,098
De kalb	41	3	360,699
Fayette	47	3	311,583
Franklin	51	5	638,206
Gibson	53	3	389,347
Giles	55	20	2,271,159
Grundy	61	4	222,649
Henry	79	20	2,889,241
Humphreys	85	3	230,022
Lawrence	99	19	2,795,179
Lincoln	103	14	2,007,557
Marshall	117	33	6,066,902
Maury	119	17	2,887,391
Overton	133	13	1,304,763
Putnam	141	6	1,131,667
Robertson	147	17	3,556,018
Rutherford	149	19	1,921,732
Smith	159	4	282,457
Sumner	165	11	1,378,255
Warren	177	30	3,221,110
Weakley	183	8	1,008,025
White	185	16	2,995,920
Williamson	187	8	799,318
Wilson	189	7	767,654
Restricted	999	23	2,270,829
Total for Tennessee		<u>375</u>	<u>51,109,027</u>

Texas

Anderson	1	3	313,181
Bailey	17	3	10,802,441
Bowie	37	3	2,943,322
Camp	63	3	156,962
Cherokee	73	11	4,258,652
Erath	143	17	5,084,029
Franklin	159	21	6,805,544
Hamilton	193	3	2,413,429
Hopkins	223	137	35,780,851
Lamar	277	8	1,091,227
Nacogdoches	347	5	930,173
Rains	379	12	1,754,578
Upshur	459	17	4,085,997
Van zandt	467	14	6,727,641
Wood	499	39	7,909,734
Restricted	999	25	24,346,938
Total for Texas		<u>321</u>	<u>115,404,699</u>

Virginia
Restricted

**Producer Milk By County/State
 (More Than Two Producers Per County)
 Federal Order No. 7
 May 2004**

County Name	Code	No. Farms	Total Pounds
Wisconsin			
Restricted			
		No. Farms	Total Pounds
Unrestricted States Total		<u>3,645</u>	<u>537,463,932</u>
Restricted States Total		<u>149</u>	<u>78,472,087</u>
Order 7 Total		<u>3,794</u>	<u>615,936,019</u>

**Producer Milk By County/State
(More Than Two Producers Per County)**

Federal Order No. 7

December 2004

County Name	Code	No. Farms	Total Pounds
Alabama			
Clay	27	3	436,564
Covington	39	3	736,938
Cullman	43	9	2,419,883
Dallas	47	3	335,166
De kalb	49	4	391,529
Elmore	51	4	178,910
Fayette	57	3	667,114
Franklin	59	3	1,076,790
Hale	65	3	506,498
Lamar	75	3	521,392
Lawrence	79	4	224,745
Mobile	97	3	526,564
Morgan	103	5	2,554,747
Restricted	999	39	7,233,210
Total for Alabama		<u>89</u>	<u>17,810,050</u>
Arkansas			
Benton	7	23	2,495,335
Boone	9	7	397,568
Carroll	15	14	1,386,719
Cleburne	23	5	645,872
Conway	29	18	2,302,424
Faulkner	45	10	2,726,929
Franklin	47	7	840,550
Fulton	49	10	633,689
Logan	83	9	539,800
Lonoke	85	6	1,002,837
Madison	87	13	695,184
Searcy	129	13	813,457
Stone	137	4	279,207
Van buren	141	12	1,265,469
Washington	143	29	2,735,411
White	145	9	882,190
Yell	149	3	245,154
Restricted	999	25	2,747,499
Total for Arkansas		<u>217</u>	<u>22,635,294</u>
Florida			
Restricted			
Georgia			
Appling	1	3	389,885
Burke	33	7	1,667,368
Carroll	45	3	233,964
Elbert	105	4	1,694,997
Gilmer	123	4	580,150

**Producer Milk By County/State
(More Than Two Producers Per County)**

Federal Order No. 7

December 2004

County Name	Code	No. Farms	Total Pounds
Greene	133	16	4,208,516
Hall	139	4	724,283
Jefferson	163	12	1,832,868
Jenkins	165	9	1,266,232
Jones	169	3	786,594
Lamar	171	4	515,869
Macon	193	8	123,335
Morgan	211	35	8,894,649
Oglethorpe	221	4	1,863,475
Polk	233	5	209,780
Putnam	237	38	11,468,123
Taliaferro	265	5	1,076,618
Troup	285	4	495,523
Union	291	4	92,193
Walker	295	8	429,280
Warren	301	5	1,076,292
Washington	303	3	722,516
Wilkes	317	9	2,184,376
Restricted	999	33	6,956,315
Total for Georgia		230	49,493,201

Illinois

Restricted

Indiana

Restricted

Kansas

Restricted

Kentucky

Adair	1	22	2,095,039
Allen	3	5	123,185
Ballard	7	3	449,012
Barren	9	71	10,244,611
Carlisle	39	4	418,256
Christian	47	49	2,341,752
Cumberland	57	3	74,345
Edmonson	61	3	132,384
Graves	83	13	1,291,916
Grayson	85	11	1,476,391
Green	87	22	1,140,528
Hardin	93	11	1,570,973
Hart	99	33	1,529,844
Larue	123	4	400,078
Logan	141	18	4,131,804
Mccracken	145	3	169,831
Metcalfe	169	46	2,717,523
Monroe	171	22	1,090,308
Russell	207	4	85,371

**Producer Milk By County/State
(More Than Two Producers Per County)**

Federal Order No. 7
December 2004

County Name	Code	No. Farms	Total Pounds
Simpson	213	7	1,164,744
Taylor	217	15	1,133,557
Todd	219	24	1,927,525
Trigg	221	8	165,116
Warren	227	35	3,809,346
Restricted	999	8	507,087
Total for Kentucky		<u>444</u>	<u>40,190,526</u>

Louisiana

Beauregard	11	5	539,546
De soto	31	18	3,743,086
East baton rouge	33	3	379,280
East feliciana	37	3	558,307
Sabine	85	5	551,947
St. helena	91	30	4,568,989
Tangipahoa	105	119	15,221,066
Washington	117	97	10,818,482
Restricted	999	18	1,237,227
Total for Louisiana		<u>298</u>	<u>37,617,930</u>

Maryland

Restricted

Michigan

Restricted

Mississippi

Amite	5	13	1,863,672
Clay	25	3	120,559
Copiah	29	9	1,149,003
Harrison	47	6	355,344
Jones	67	5	833,680
Lawrence	77	6	484,982
Leake	79	4	564,420
Lee	81	3	331,825
Lincoln	85	20	2,325,951
Marion	91	20	3,189,193
Marshall	93	4	1,383,016
Neshoba	99	4	262,099
Newton	101	10	1,966,998
Noxubee	103	8	1,468,764
Pearl river	109	7	457,654
Pike	113	24	3,107,688
Stone	131	5	148,179
Tate	137	6	1,174,572
Tippah	139	3	236,002
Walthall	147	37	4,405,419
Winston	159	3	212,438
Restricted	999	32	7,067,303

**Producer Milk By County/State
(More Than Two Producers Per County)**

Federal Order No. 7

December 2004

County Name	Code	No. Farms	Total Pounds
Total for Mississippi		<u>232</u>	<u>33,108,761</u>
Missouri			
Barry	9	35	3,638,753
Barton	11	5	543,439
Bates	13	14	1,189,204
Benton	15	7	422,028
Camden	29	7	448,106
Cape girardeau	31	7	480,064
Cass	37	8	573,635
Cedar	39	6	303,847
Christian	43	26	1,747,026
Cooper	53	5	616,532
Dade	57	4	411,547
Dallas	59	52	4,001,403
Douglas	67	69	4,608,069
Greene	77	32	2,883,947
Henry	83	6	469,710
Hickory	85	8	687,483
Howell	91	42	3,583,528
Jasper	97	15	1,784,998
Johnson	101	10	732,169
Laclede	105	70	5,606,192
Lafayette	107	12	922,489
Lawrence	109	51	5,482,385
Mcdonald	119	9	957,300
Newton	145	23	2,252,596
Oregon	149	9	892,950
Ozark	153	30	2,334,912
Perry	157	8	214,428
Pettis	159	4	325,150
Polk	167	54	7,179,651
St. clair	185	4	205,707
Stone	209	18	1,604,348
Taney	213	3	190,864
Texas	215	57	5,233,064
Webster	225	106	7,387,647
Wright	229	167	15,253,701
Restricted	999	17	2,324,900
Total for Missouri		<u>1,000</u>	<u>87,493,772</u>
Nebraska			
Restricted			
New Mexico			
Restricted			
North Carolina			
Restricted			

**Producer Milk By County/State
(More Than Two Producers Per County)**

Federal Order No. 7
December 2004

County Name	Code	No. Farms	Total Pounds
Ohio			
Restricted			
Oklahoma			
Adair	1	52	5,540,198
Bryan	13	6	1,313,230
Cherokee	21	17	1,681,230
Coal	29	3	180,586
Craig	35	6	360,291
Delaware	41	25	2,911,936
Mayes	97	30	3,210,956
Muskogee	101	7	881,838
Nowata	105	3	151,786
Ottawa	115	11	1,077,941
Rogers	131	10	620,683
Tillman	141	3	5,228,592
Wagoner	145	4	275,885
Restricted	999	13	7,594,583
Total for Oklahoma		<u>190</u>	<u>31,029,735</u>
Pennsylvania			
Restricted			
South Carolina			
Restricted			
Tennessee			
Bedford	3	11	1,785,146
Bledsoe	7	7	497,425
Bradley	11	13	1,316,073
Cannon	15	10	658,491
Coffee	31	16	2,105,888
Cumberland	35	9	1,847,064
Fayette	47	3	297,140
Franklin	51	4	335,732
Gibson	53	3	359,912
Giles	55	18	2,089,864
Grundy	61	4	228,419
Henry	79	22	2,746,138
Lawrence	99	18	2,228,996
Lincoln	103	14	1,584,121
Marshall	117	33	5,446,008
Maury	119	15	2,534,586
Overton	133	9	897,015
Putnam	141	5	1,009,470
Robertson	147	16	3,206,277
Rutherford	149	16	1,490,614
Smith	159	4	262,356

**Producer Milk By County/State
(More Than Two Producers Per County)**

Federal Order No. 7

December 2004

County Name	Code	No. Farms	Total Pounds
Sumner	165	11	1,412,180
Warren	177	27	2,763,230
* Weakley	183	7	484,652
White	185	15	2,599,830
Williamson	187	8	803,460
Wilson	189	7	686,910
Restricted	999	25	2,095,948
Total for Tennessee		<u>350</u>	<u>43,772,945</u>

Texas

Archer	9	4	2,262,834
Bowie	37	3	2,705,457
Camp	63	4	643,448
Cherokee	73	12	3,971,153
Deaf smith	117	3	836,458
Erath	143	9	12,195,298
Franklin	159	20	4,527,786
Hopkins	223	137	32,047,365
Hunt	231	3	103,928
Johnson	251	9	3,297,941
Lamar	277	8	2,103,445
Nacogdoches	347	6	1,269,021
Rains	379	13	2,196,978
Upshur	459	16	3,597,461
Van zandt	467	11	4,096,734
Wood	499	44	8,173,415
Restricted	999	30	17,204,716
Total for Texas		<u>332</u>	<u>101,233,438</u>

Virginia

Restricted

Wisconsin

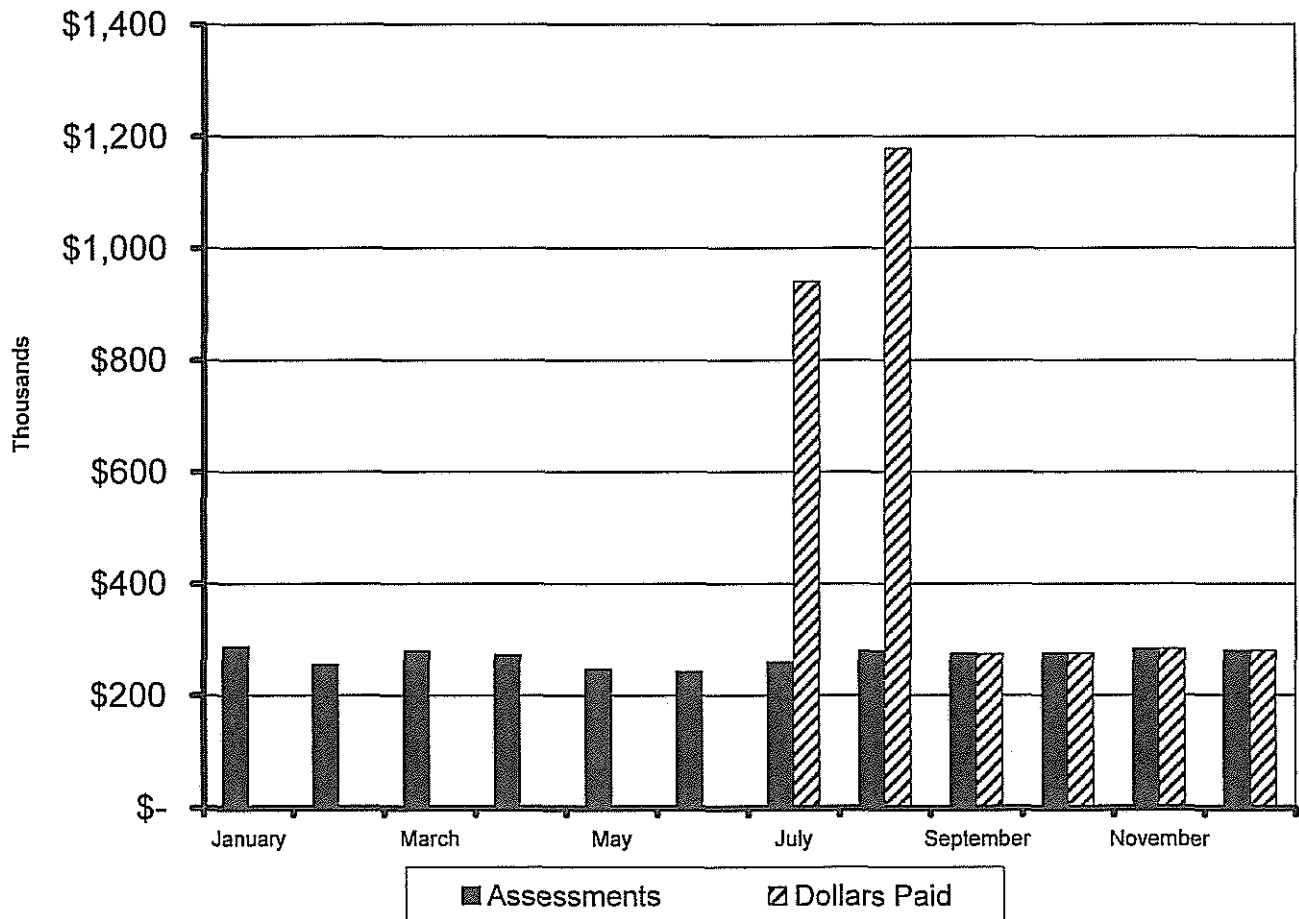
Restricted

	No. Farms	Total Pounds
Unrestricted States Total	<u>3,382</u>	<u>464,385,652</u>
Restricted States Total	<u>298</u>	<u>100,921,323</u>
Order 7 Total	<u>3,680</u>	<u>565,306,975</u>

**SOUTHEAST MARKETING AREA
FEDERAL ORDER NO. 7
TRANSPORTATION CREDIT BALANCING FUND**

2004	Assessments	Pounds Claimed	Dollars Claimed	Dollars Paid	Proration
Beginning Balance	\$ -				
Jan-June	\$ 1,589,635.67				
July	\$ 260,831.99	73,759,505	\$ 941,109.09	\$ 941,109.09	100.00%
August	\$ 280,735.27	112,468,982	\$ 1,378,615.07	\$ 1,178,531.70	85.49%
September	\$ 275,652.75	104,694,625	\$ 1,283,714.51	\$ 274,570.23	21.39%
October	\$ 276,637.76	99,599,547	\$ 1,049,206.36	\$ 276,239.63	26.33%
November	\$ 283,973.25	87,222,553	\$ 1,000,193.84	\$ 283,973.06	28.39%
December	\$ 280,566.92	63,243,496	\$ 596,484.62	\$ 280,550.35	47.03%
TOTAL /1	\$ 3,248,033.61	540,988,708	\$ 6,249,323.49	\$ 3,234,974.06	

1/ Difference between Assessments and Dollars Paid is accounted for by accrued interest and audit adjustments.



**SOUTHEAST MARKETING AREA
FEDERAL ORDER NO. 7
2004 POOL HANDLERS**

Fluid Milk Distributing Pool Plants §1007.7(a)

	J	F	M	A	M	J	J	A	S	O	N	D
Barber Pure Milk Company Birmingham, Alabama	X	X	X	X	X	X	X	X	X	X	X	X
Barbe's Dairy Westwego, Louisiana	X	X	X	X	X	X	X	Plant Closed				
Borden Milk Products, LLC Lafayette, Louisiana	X	X	X	X	X	X	X	X	X	X	X	X
Brown's Dairy New Orleans, Louisiana	X	X	X	X	X	X	X	X	X	X	X	X
Centennial Farms Dairy Atlanta, Georgia	X	X	X	X	X	X	X	X	X	X	X	X
Country Delite Farms Nashville, Tennessee	X	X	X	X	X	X	X	X	X	X	X	X
Dairy Fresh of Alabama, LLC Cowarts, Alabama	X	X	X	X	X	X	X	X	X	X	X	X
Dairy Fresh of Alabama, LLC Hattiesburg, Mississippi	X	X	X	X	X	X	X	X	X	X	X	X
Dairy Fresh of Alabama, LLC Prichard, Alabama	X	X	X	X	X	X	X	X	X	X	X	X
Dairy Fresh of Louisiana, LLC Baker, Louisiana	X	X	X	X	X	X	X	X	X	X	X	X
Foremost Dairy, Inc. Shreveport, Louisiana	X	X	X	X	X	X	X	X	X	X	X	X
Heritage Farms Dairy Murfreesboro, Tennessee	X	X	X	X	X	X	X	X	X	X	X	X
Hiland Dairy Fayetteville, Arkansas	X	X	X	X	X	X	X	X	X	X	X	X
Hiland Dairy Fort Smith, Arkansas	X	X	X	X	X	X	X	X	X	X	X	X
Hiland Dairy Springfield, Missouri	X	X	X	X	X	X	X	X	X	X	X	X
Kleinpeter Dairy Farms Baton Rouge, Louisiana	X	X	X	X	X	X	X	X	X	X	X	X

	J	F	M	A	M	J	J	A	S	O	N	D
LuVel Dairy Products, Inc. Kosciusko, Mississippi	X	X	X	X	X	X	X	X	X	X	X	X
Mayfield Dairy Farms, Inc. Braselton, Georgia	X	X	X	X	X	X	X	X	X	X	X	X
[†] Morningstar Foods Murray, Kentucky	X	X	X	X	X	X	X	X	X	X	X	X
New Atlanta Dairies, Inc. Atlanta, Georgia	X	X	Name Changed to New Atlanta Trust Dairy									
New Atlanta Trust Dairy Atlanta, Georgia			X	X	X	X	X	X	X	X	X	X
Pet Dairies Baxley, Georgia					X	X	X	X	X	X	X	X
Publix Supermarkets, Inc. Lawrenceville, Georgia	X	X	X	X	X	X	X	X	X	X	X	X
Purity Dairies, Inc. Nashville, Tennessee	X	X	X	X	X	X	X	X	X	X	X	X
Turner/Coleman Dairy Little Rock, Arkansas	X	X	X	X	X	X	X	X	X	X	X	X
Turner Holdings, LLC Covington, Tennessee	X	X	X	X	X	X	X	X	X	X	X	X
Turner Holdings, LLC Fulton, Kentucky	X	X	X	X	X	X	X	X	X	X	X	X
Turner Holdings, LLC Memphis, Tennessee	X	X	X	X	X	X	X	X	X	X	X	X
Winn-Dixie Stores, Inc. Hammond, Louisiana	X	X	X	X	X	X	X	X	X	X	X	X
Winn-Dixie Stores, Inc. Montgomery, Alabama	X	X	X	X	X	X	X	X	X	X	X	X

J	F	M	A	M	J	J	A	S	O	N	D
---	---	---	---	---	---	---	---	---	---	---	---

Pool Supply Plants §1007.7(c) and/or §1007.7(d)

Arkansas Dairy Receiving Station Damascus, Arkansas		X	X	X	X						
Dairy Farmers of America, Inc. Cabool, Missouri	X	X	X	X	X	X	X	X	X	X	X
Dairy Farmers of America, Inc. Franklinton, Louisiana	X	X	X		X	X	X	X	X	X	X
Dairy Farmers of America, Inc. Monet, Missouri	X	X	X		X	X	X	X	X	X	X

Cooperatives Qualifying as Pool Handlers §1000.9(c)

	J	F	M	A	M	J	J	A	S	O	N	D
Cooperative Milk Producers Assoc. Blackstone, Virginia								X				
Dairy Farmers of America, Inc. Kansas City, Missouri	X	X	X	X	X	X	X	X	X	X	X	X
Dairymens Marketing Cooperative Mountain Grove, Missouri	X	X	X	X	X	X	X	X	X	X	X	X
Foremost Farms USA Baraboo, Wisconsin									X			
Lone Star Milk Producers, Inc. Windthorst, Texas	X	X	X	X	X	X	X	X	X	X	X	X
Maryland/Virginia Milk Producers Reston, Virginia	X	X	X	X	X	X	X	X	X	X	X	X
National Farmers Organization Minster, Ohio	X	X	X	X	X	X	X	X	X	X	X	X
Select Milk Producers Artesia, New Mexico	X	X	X	X	X	X	X	X	X	X	X	X
Southeast Milk, Inc. Bellevue, Florida	X	X	X	X	X	X	X	X	X	X	X	X

**SOUTHEAST MARKETING AREA
FEDERAL ORDER NO. 7
NONPOOL PLANTS WITH ROUTE DISPOSITION IN THE AREA - 2004**

Other Order Plants §1000.8(a)

Federal Order # 1	J	F	M	A	M	J	J	A	S	O	N	D
Dannon Milk Products West Jordan, Utah	X	X	X	With Termination of FO 135, Plant Became Partially Regulated								
H.P. Hood, Inc. Oneida, New York	X	X	X	X	X	X	X	X	X	X	X	X
H.P. Hood, Inc. Winchester, Virginia	X	X	X	X	X	X	X	X	X	X	X	X
Morningstar Foods Mount Crawford, Virginia	X	X	X	X	X	X	X	X	X	X	X	X
Steuben Foods Elma, New York	X	X	X	X	X	X	X	X	X	X	X	X
Tuscan/Lehigh Valley Dairies Union, New Jersey		X	X	X	X	X			X	X	X	X

Federal Order #5

Coburg Dairy, Inc. Charleston, South Carolina	X	X	X	X	X	X	X	X	X	X	X	X
Dean Foods Louisville, Kentucky	X	X	X	X	X	X	X	X	X	X	X	X
Flav-O-Rich, Inc. Florence, South Carolina	X	X	X	X	X	X	X	X	X	X	X	X
Flav-O-Rich, Inc. London, Kentucky	X	X	X	X	X	X	X	X	X	X	X	X
Golden Gallon, Inc. Chattanooga, Tennessee	X	X	X	X	X	X	X	X	X	X	X	X
Hunter Jersey Farms High Point, North Carolina	X	X	X	X	X	X	X	X	X	X	X	X
Land-O-Sun Kingsport, Tennessee	X	X	X	X	X	X	X	X	X	X	X	X
Land-O-Sun Spartanburg, South Carolina	X	X	X	X	X	X	X	X	X	X	X	X

J	F	M	A	M	J	J	A	S	O	N	D
---	---	---	---	---	---	---	---	---	---	---	---

Mayfield Dairy Farms, Inc.
Athens, Tennessee

X	X	X	X	X	X	X	X	X	X	X	X
---	---	---	---	---	---	---	---	---	---	---	---

Milkco, Inc.
Asheville, North Carolina

X	X	X	X	X	X	X	X	X	X	X	X
---	---	---	---	---	---	---	---	---	---	---	---

Regis Milk Company
Charleston, South Carolina

X	X	X	X	X	X	X	X	X	X	X	X
---	---	---	---	---	---	---	---	---	---	---	---

Southern Belle Dairy, Inc.
Somerset, Kentucky

X	X	X	X	X	X	X	X	X	X	X	X
---	---	---	---	---	---	---	---	---	---	---	---

U.C. Milk Company
Madisonville, Kentucky

X	X	X	X	X	X	X	X	X	X	X	X
---	---	---	---	---	---	---	---	---	---	---	---

Westover Dairy
Lynchburg, Virginia

X	X	X	X	X	X	X	X	X	X	X	X
---	---	---	---	---	---	---	---	---	---	---	---

Winn-Dixie Stores, Inc.
Greenville, South Carolina

X	X	X	X	X	X	X	X	X	X	X	X
---	---	---	---	---	---	---	---	---	---	---	---

Winn-Dixie Stores, Inc.
High Point, North Carolina

X	X	X	X	X	X	X	X	X	X	X	X
---	---	---	---	---	---	---	---	---	---	---	---

Federal Order #6

Morningstar Foods
Jacksonville, Florida

X	X	X	X	X	X	X	X	X	X	X	X
---	---	---	---	---	---	---	---	---	---	---	---

Publix Supermarkets, Inc.
Lakeland, Florida

X	X	X	X	X	X	X	X	X	X	X	X
---	---	---	---	---	---	---	---	---	---	---	---

Federal Order #30

Kohler Mix Specialties, Inc.
White Bear Lake, Minnesota

X	X	X	Plant Became Partially Regulated									
---	---	---	----------------------------------	--	--	--	--	--	--	--	--	--

Lifeway Foods, Inc.
Morton Grove, Illinois

X	X	X	X	X	X	X	X	X	X	X	X
---	---	---	---	---	---	---	---	---	---	---	---

Pride of Main Street Dairy, LLC
Sauk Centre, Minnesota

X	X	X	X	X	X	X	X	X	X	X	X
---	---	---	---	---	---	---	---	---	---	---	---

Schroeder Milk Company, Inc.
Maplewood, Minnesota

X	X	X	X	X	X	X	X	X	X	X	X
---	---	---	---	---	---	---	---	---	---	---	---

J	F	M	A	M	J	J	A	S	O	N	D
---	---	---	---	---	---	---	---	---	---	---	---

Federal Order #32

Aurora Organic Dairy
Platteville, Colorado

							X	X			
--	--	--	--	--	--	--	---	---	--	--	--

Borden Dairy, Inc.
Tulsa, Oklahoma

X	X	X	X	X	X	X	X	X	X	X	X
---	---	---	---	---	---	---	---	---	---	---	---

Chester Dairy Company
Chester, Illinois

X	X	X	X	X	X	X	X	X	X	X	X
---	---	---	---	---	---	---	---	---	---	---	---

Jackson Ice Cream Company
Hutchinson, Kansas

X	X	X	X	X	X	X	X	X	X	X	X
---	---	---	---	---	---	---	---	---	---	---	---

Mid States Dairy, Inc.
Hazelwood, Missouri

X	X	X	X	X	X	X	X	X	X	X	X
---	---	---	---	---	---	---	---	---	---	---	---

Pet O'Fallon, LLC
O'Fallon, Illinois

X	X	X	X	X	X	X	X	X	X	X	X
---	---	---	---	---	---	---	---	---	---	---	---

Pevely Dairy Company
St. Louis, Missouri

X	X	X	X	X	X	X	X	X	X	X	X
---	---	---	---	---	---	---	---	---	---	---	---

Prairie Farms Dairy, Inc.
Carlinville, IL

X	X	X	X	X	X	X	X	X	X	X	X
---	---	---	---	---	---	---	---	---	---	---	---

Prairie Farms Dairy, Inc.
Granite City, Illinois

X	X	X	X	X	X	X	X	X	X	X	X
---	---	---	---	---	---	---	---	---	---	---	---

Prairie Farms Dairy, Inc.
Olney, Illinois

X	X	X	X	X	X	X	X	X	X	X	X
---	---	---	---	---	---	---	---	---	---	---	---

Federal Order #33

Crossroads Farms
Indianapolis, Indiana

X	X	X	X	X	X	X	X	X	X	X	X
---	---	---	---	---	---	---	---	---	---	---	---

Parmalat White Knight Pkging
Wyoming, Michigan

X	X	X	X	X	X	X	X	X	X	X	X
---	---	---	---	---	---	---	---	---	---	---	---

Federal Order #126

Borden Milk Products, LLC
Dallas, Texas

X	X	X	X	X	X	X	X	X	X	X	X
---	---	---	---	---	---	---	---	---	---	---	---

Morningstar Foods
Sulphur Springs, Texas

X	X	X	X	X	X	X	X	X	X	X	X
---	---	---	---	---	---	---	---	---	---	---	---

Oak Farms
Dallas, Texas

							X		X	X	X
--	--	--	--	--	--	--	---	--	---	---	---

Promised Land Dairy
Floresville, Texas

X	X	X	X	X	X	X	X	X	X	X	X
---	---	---	---	---	---	---	---	---	---	---	---

Southwest Dairy
Tyler, Texas

X	X	X	X	X	X	X	X	X	X	X	X
---	---	---	---	---	---	---	---	---	---	---	---

	J	F	M	A	M	J	J	A	S	O	N	D
Vandervoort Dairy Fort Worth, Texas	X	X	X	X	X	X	X	X	X	X	X	X
Western Quality Foods Cedar City, Utah				X	X	X	X	X	X	X	X	X

Federal Order #131

Shamrock Foods Company
Phoenix, Arizona

										X		
--	--	--	--	--	--	--	--	--	--	---	--	--

Federal Order #135

Gossner Foods, Inc.
Logan, Utah

X	X	X	With Termination of FO 135, Plant Became Partially Regulated									
---	---	---	--	--	--	--	--	--	--	--	--	--

Western Quality Foods
Cedar City, Utah

X	X	X	Became Regulated on FO 126									
---	---	---	----------------------------	--	--	--	--	--	--	--	--	--

Exempt Distributing Plants §1000.8(e)

California Natural Products Savannah, Georgia	X	X	X	X	X	X	X	FO 1	X	X	X	X
College of the Ozarks Point Lookout, Missouri	X	X	X	X	X	X	X	X	X	X	X	X
Etowah Maid Dairies, Inc. Canton, Georgia	X	X	X	X	X	X	X	X	X	X	X	X
Hosanna Hills Dairy Eureka Springs, Arkansas	X	X	X	X	X	X	X	X	Closed			
Humphrey's Dairy Hot Springs, Arkansas	X	X	X	X	X	X	X	X	X	X	X	X
Louisiana Tech University Ruston, Louisiana	X	X	X	X	X	X	X	X	X	X	X	X
Mauthe's Dairy, LLC Folsom, Louisiana	X	X	X	X	X	X	X	X	X	X	X	X
Memory Lane Dairy Fordland, Missouri	X	X	X	X	X	X	X	X	X	X	X	X
Mississippi State University Starkville, Mississippi	X	X	X	X	X	X	X	X	X	X	X	X
Mountain Springs Creamery Marshall, Arkansas				X	X	X	X	X	X	X	X	X
Rock Springs Dairy Wildersville, Tennessee	X	X	X	X	X	X	X	X	X	X	X	X

	J	F	M	A	M	J	J	A	S	O	N	D
Smith Creamery, LLC Mt. Hermon, Louisiana	X	X	X	X	X	X	X	X	X	X	X	X
Wright Dairy, LLC Alexandria, Alabama	X	X	X	X	X	X	X	X	X	X	X	X

Partially Regulated Distributing Plants §1000.8(c)

Cacique, Inc. City of Industry, California	X	X	X	X	X	X	X	X	X	X	X	X
Dannon Milk Products Fort Worth, Texas	X	X	X	X	X	X	X	X	X	X	X	X
Dannon Milk Products West Jordan, Utah	FO 1 Plant			X	X	X	X	X	X	X	X	X
Gossner Foods, Inc. Logan, Utah	FO 135 Plant			X	X	X	X	X	X	X	X	X
Jasper Products, LLC Joplin, Missouri	X	X	X	X	X	X	X	X	X	X	X	X
Kohler Mix Specialties, Inc. Sulphur Springs, Texas	X	X	X	X	X	X	X	X	X	X	Closed	
Kohler Mix Specialties, Inc. White Bear Lake, Minnesota				X				X		X	X	X
Milk Products of Alabama Decatur, Alabama	X	X	X	X	X	X	X	X	X	X	X	X
WestFarms Foods, Inc. Fruitland, Idaho						X	X	X	X	X	X	X

Producer-Handler Plants §1000.8(b)

Aurora Organic Dairy Platteville, Colorado										X	X	X
Martin Dairy, Inc. Humansville, Missouri	X	X	X	X	X	X	X	X	X	X	X	X
W.H. Braum, Inc. Tuttle, Oklahoma	X	X	X	X	X	X	X	X	X	X	X	X