

# Cost of Processing in Cheese, Whey, Butter and Nonfat Dry Milk Plants

Mark Stephenson, Ph.D.  
Cornell Program on Dairy Markets and Policy

September 1, 2006

---

Cornell University has been conducting cost of processing studies in the dairy industry for more than 30 years. Original work back in the 1970s and 80s included the Dairy Information Management System, or DMIS, which was a project to collect and summarize monthly fluid milk plant processing costs. Later work by the Cornell Program on Dairy Markets and Policy (CPDMP) included studies on the cost of processing cheese<sup>1,2</sup>, whey<sup>3</sup>, butter, nonfat dry milk powder<sup>4,5</sup>, again fluid milk<sup>6</sup> and more recently ultrafiltered milk. This project assesses the costs of processing in cheddar cheese, dry whey, butter and nonfat dry milk plants and builds on knowledge and background of these earlier efforts.

This report is considered to be a "working paper" and not the final report from this project. The data and observations reported here are not tentative but the final report will further explore reasons as to why costs vary from plant-to-plant. This paper will only document plant selection, data collection, methodology and processing cost summaries.

---

<sup>1</sup> Mesa-Dishington, Jens K., Richard D. Aplin, and David M. Barbano., "Economic Performance of 11 Cheddar Cheese Manufacturing Plants in Northeast and North Central Regions, Part 1 of a Research Effort on Cheddar Cheese Manufacturing.", A.E. Res. 87-2, Dept. of Agr. Econ., Cornell Univ., January 1987.

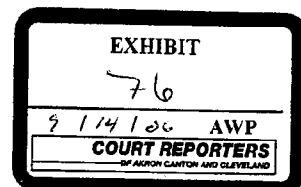
<sup>2</sup> Mesa-Dishington, Jens K., David M. Barbano, and Richard D. Aplin., "Cheddar Cheese Manufacturing Costs, Economies of Size and Effects of Different Current Technologies, Part 2 of a Research Effort on Cheddar Cheese Manufacturing.", A.E.Res. 87-3, Dept. of Agr. Econ., Cornell Univ., January 1987.

<sup>3</sup> Hurst, Susan, Richard Aplin, and David Barbano., "Whey Powder and Whey Protein Concentrate Production Technology, Costs and Profitability, Part 4 of a Research Effort on Cheddar Cheese Manufacturing.", A.E.Res. 90-4, Dept. of Agr. Econ., Cornell Univ., April 1990.

<sup>4</sup> Stephenson, Mark W. and Andrew M. Novakovic., "Manufacturing Costs in Ten Butter/Powder Processing Plants.", A.E.Res. 89-19, Dept. of Agr. Econ., Cornell Univ., September 1989.

<sup>5</sup> Stephenson, Mark W. and Andrew M. Novakovic., "Determination of Butter/Powder Plant Manufacturing Costs Utilizing an Economic Engineering Approach.", A.E.Res. 90-6, Dept. of Agr. Econ., Cornell Univ., June 1990.

<sup>6</sup> Erba, Eric M., Richard D. Aplin, and Mark W. Stephenson., "Labor Productivities and Costs in 35 of the Best Fluid Milk Plants in the U.S.", E.B. 97-03, Dept. of Agr., Res., and Mgrl. Econ., Cornell Univ., March 1997.

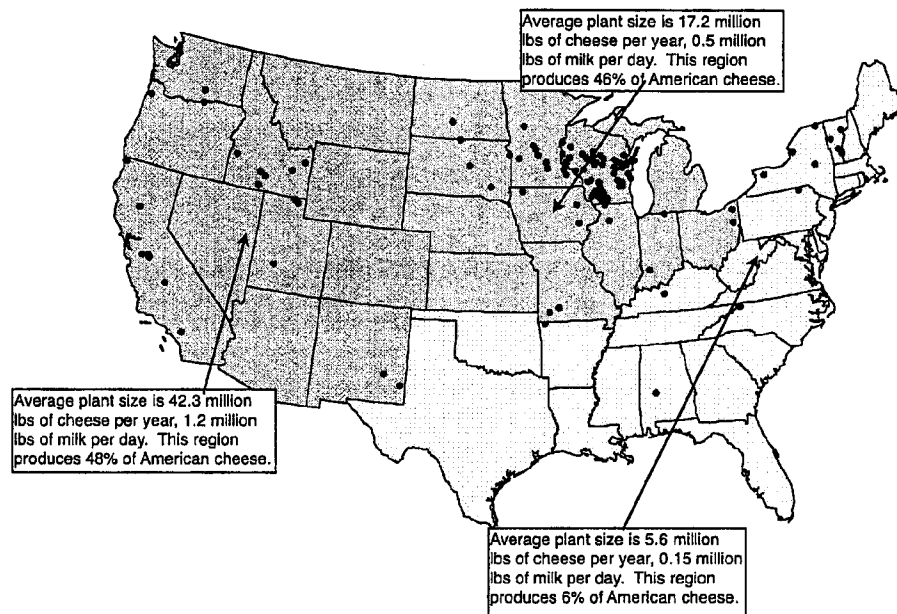


## Plant Selection

In previous studies, participating plants were carefully selected to be “best practice” plants and plants with a fairly narrow product mix. We have always included plants of various sizes but we looked for plants that were considered by industry observers to be efficient, low-cost processors at any given size. One of the objectives of those studies was to determine the cost “frontier”, or the lowest possible costs over a range of plant capacities.

In this study, we chose plants on the basis of a random draw stratified by plant size. As a starting point, the Agricultural Marketing Service of the USDA maintains a list of “Dairy Plants Surveyed and Approved for Grading”. This list is not a census of dairy plants in the country but it does provide a beginning. The CPDMP also maintains a list of plants and this list was used to supplement the USDA list. The USDA list categorizes plants according to the products produced. For example, the C3 category includes American (Cheddar, Colby, Granular Curd or Washed Curd) cheeses. The map below locates the 113 plants in the C3 list from USDA. Assigning those plants to the U.S. geographic regions used by the National Agricultural Statistics Service in their Dairy Products publication, we can see that average plant size differs greatly by region. Also, the total volume of American Cheese is largely produced in the Upper Midwest and the far West.

Figure 1. 113 Cheese Plants in C3 Plant List



Because the greatest number of plants are located in the Upper Midwest, a simple random draw from the plant list would tend to: 1) over-represent the Upper Midwest as a region and, 2) over-sample smaller plants. A random draw of 20 cheese plants, stratified by plant size was conducted whereby 5 plants were randomly selected from the

largest 10 percent of plants in the country (outside of California<sup>7</sup>) and 15 were selected from the remaining 90 percent of plants.

Butter and nonfat dry milk plants were also selected by random draw but because the population of these plants is so much smaller, no stratification was done. The goal was to survey 8 nonfat dry milk plants and 10 butter operations.

In addition to plants producing cheddar cheese and/or dry whey, nonfat dry milk and/or butter, plants had to produce these products in one or more of the package sizes that are surveyed in the National Agricultural Statistics Service report on Dairy Product Prices. I.e., 40 lb. blocks of cheese, 500 lb. barrels of cheese, dry whey in bags, totes or bulk, butter in 68 lb. or 25 kg. boxes and nonfat dry milk in bags, totes or bulk.

As with previous cost of processing studies conducted by the CPDMP, voluntary participation in this project has been excellent. Of all plants selected in the draw and invited to participate, only two have declined. In our experience, this is a fairly normal response rate. These two plants were replaced in a subsequent draw.

### Data Collection

Previous projects had further narrowed plant participation to operations with a fairly narrow product mix. If we were targeting cheddar cheese plants, then we sought plants producing almost exclusively cheddar cheese. This restriction has the advantage of easier cost allocation but increasingly, it is difficult to find such singular product production. This project was not restrictive to product mix except to note that one or more of the products of interest and package sizes had to be produced at the plant.

Earlier survey work was also conducted with a printed survey form. Using fixed formats, such as a printed survey, requires that you have enough pages to cover all possible products, package sizes, labor, utilities, etc. for all possible plant configurations. Although filling out such a survey might be relatively "sparse matrix" for any given plant, the document would be daunting and might diminish participation.

For this project, a computer program was developed that would build a questionnaire based on responses to previous questions. For example, first identifying products produced at the plant generated subsequent questions about package sizes and monthly production of the individual products. And, identifying package sizes then generated questions about the packaging costs for those particular containers. Versions of the program are available for Windows 95 through XP, Macintosh Classic through OSX and Unix platforms.

When surveys were complete, they were submitted as an email attachment or directly from the program. The electronic data collection process streamlined the data entry

---

<sup>7</sup> California plants are already surveyed by the California Department of Food and Agriculture.

and reduced possible re-entry errors from keying data into a computer from the paper forms. Anecdotal evidence from participants indicate that completing the survey required between 4 and 8 hours of work depending on the complexity of the plant and the sophistication of the information retrieval systems of the company. Appendix A includes the directions for the Cost of Processing (COP) program with example screen shots for a cheese plant. This gives an idea of the questions that were asked and the data collected.

## Methods

Key questions regarding methods include: 1) What is included in the cost of processing and 2) How are costs allocated across products produced?

The cost of processing is intended to capture the costs of transforming milk and other dairy ingredients into the dairy products of interest. There is no need to consider the cost of the milk or dairy ingredients purchased nor is there a need to know dollar value of the sales of the finished product. We are not trying to determine profitability of plants, just the cost of processing.

While it might seem as though this strict definition of product transformation would make the definition of included and excluded costs as different as black and white, there are grey areas. One of those areas includes sales and general administrative costs. We try to separate the overhead costs required to own and operate a processing plant from the marketing expense. Product must be sold for plants to be viable, however, and marketing costs can vary tremendously depending on your target channel (e.g., are plants selling consumer packages to higher end retailers or delivering bulk products to firms specializing in final product marketing). For this reason, all sales expenses are excluded from the cost of processing figures. However, some plants are charged a "headquarters" expense. This expense often covers centralized services such as legal, accounting, etc. that would otherwise be line items in a plant's general ledger.

Anywhere plant expenses can be directly allocated to a particular products, plants are asked to do so. A good example is utility expense where individual electric or gas meters can be recorded and assigned to a product line such as cheese or powdered products. Some expenses must be indirectly allocated to products.

Labor costs are identified by job function. Functional areas depend on the product mix but include such centers as receiving and tanker washing, cheese processing, cheese packaging, dryer labor, powder bagging, cold room, etc. Cheese processing or packaging labor are clearly assigned to cheese labor costs. However, job functions such as receiving and tanker washing should have labor apportioned to both cheese production, whey processing, etc. *Any cost that cannot be clearly assigned to a single product line is apportioned according to the percent of milk solids processed in the various product lines.* For example, a plant that brought in 100 pounds of raw milk and processed it into cheese, dry whey and whey cream might have sold 5.85 lbs of solids (fat and solids-not-

fat) in the cheese, 6.12 lbs of solids in the dry whey and 0.20 lbs of solids in the whey cream. This would mean that \$10,000 of labor in the receiving and tanker washing center would be apportioned as \$4,807 to cheese, \$5,029 to dry whey and \$164 to whey cream. Any other costs which are unallocated to specific product lines are apportioned indirectly in the same way as the labor cost example.

The California Department of Food and Agriculture's (CDFA) Division of Marketing Services has compiled and published manufacturing cost data for many years. They utilize exactly the same method of allocating processing costs across product lines. This project follows CDFA's procedures for determining processing costs with few exceptions. One exception is that the California data is audited. CPDMP has no such audit authority but the comparability of methods means that the CPDMP results can use the CDFA summaries as a useful benchmark. In other words, we would expect that comparable plants would have comparable processing costs across the two separate efforts. If there were questions about a plant's costs, the plant was contacted and asked to verify their data.

Every plant's data is scrutinized for completeness and accuracy relative to internal and external benchmarks. All data reported here have satisfied the researcher as to reasonable measures of accuracy and integrity. Moreover, nearly all plants in the survey have been visited by CPDMP for a visual assessment of plant layout, product flow and to note any unusual characteristics of the operations.

Another exception to CDFA's procedures is in the calculation of return on investment (ROI). Normally, ROI is a calculation based on the profit of the firm relative to the value of the assets needed to generate the profit (the investment). We are not collecting information on the sale of products nor on the cost of the major ingredients (milk) in this project. As such, we cannot calculate a firm's profit nor the ROI. However, an allowance for a ROI is viewed as an opportunity cost for the firm. If the firm invested the value of the capital assets in another venture or in financial instruments, they would expect a return.

CDFA calculates a ROI allowance based on the book value of individual assets depreciated by their own schedule. This is an attempt to determine a true economic depreciation and not a tax value depreciation (which tends to undervalue older plant and equipment). Determining the original purchase price and setting up a depreciation schedule for every building and piece of equipment for each plant is beyond the scope of this project. Plant's were asked to provide "market value of assets" for the plant and this is the value that is used to calculate a ROI allowance.

Valuation of assets is half of the information needed to calculate a ROI allowance—a suitable rate of return is the other. CDFA is currently using the Moody's Baa corporate bond index as their rate and this project does also. This index is considered to be a medium-grade investment vehicle. It is comprised of bonds better than "junk" status but not as solid as "gilt edged" bonds—In other words, a middle of the road rate of return. Appendix B shows the monthly Moody's Baa Corporate Bond Index values for the last three and a half years.

## Processing Cost Results

At the time of publication of this report, a few plants had not completed all of their data entry or responded to questions about data submitted. There were 16 cheese and whey plants, 4 butter and 8 nonfat dry milk plants with completed data. Referencing the map on page 2 of this working paper, 6 cheese plants were in the Western region (excluding California), 5 were in the Upper Midwestern region and the remaining 5 were in the Northeastern region. Of the butter and powder plants, 4 were in the Western region (again, not California), 1 was in the Upper Midwestern region and 3 were in the Northeast.

---

Plants were asked to supply one year's worth of data. Many of the values are requested as an annual summary but some are requested on a monthly basis. It is suggested that a plant select the most recent twelve-month period which corresponds to their fiscal year. Because the plants have some latitude for time period, the results do not correspond to a calendar year or even to the same twelve-month period. Participating plant data span a 26 month period of time.

Plants may have processed several products but only cheddar cheese, dry whey, butter and nonfat dry milk powder results are presented here. The other products have had processing costs allocated to them in just the same way and those costs are not born by the products of interest.

The reporting format and the cost categories shown here are the same as CDFA's. "Processing Labor" includes all direct and indirectly allocated labor except for plant management and clerical labor. "Processing Non-Labor" includes all utilities, depreciation, taxes, cleaning, laboratory and general supplies, etc. "Other Ingredient" includes non-dairy additions to the product. Examples include starter culture, coloring, salt, etc. "General & Administrative" includes management and clerical labor (but not sales or marketing), dues, postage, legal & accounting, headquarters expense and short-term interest. The "Return on Investment" is calculated as the applicable Moody's Baa rate times the market value of the directly and indirectly allocated market value of plant and equipment.

Table 1. Processing Costs for 16 Cheddar Cheese Plants.

	Processing Labor	Processing Non-Labor	Package	Other Ingredient	General & Administrative	Return on Investment	Total Cost	Ave Volume in Group
8 Low Cost Plants	\$0.0393	\$0.0608	\$0.0196	\$0.0095	\$0.0083	\$0.0085	\$0.1459	88,784,343
8 High Cost Plants	\$0.0552	\$0.0654	\$0.0207	\$0.0294	\$0.0244	\$0.0190	\$0.2140	31,662,841
Simple Average	\$0.0571	\$0.0782	\$0.0204	\$0.0161	\$0.0163	\$0.0185	\$0.2065	60,223,592
Weighted Average	\$0.0435	\$0.0620	\$0.0198	\$0.0147	\$0.0126	\$0.0112	\$0.1638	60,223,592

Figure 2. Breakdown of Cheddar Cheese Processing Costs.

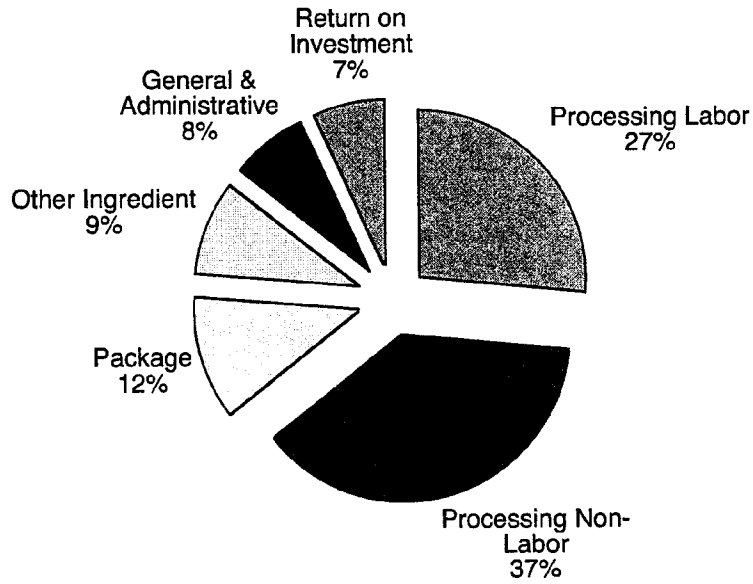


Table 2. Processing Costs for 12 Dry Whey Plants.

	Processing Labor	Processing Non-Labor	Package	General & Administrative	Return on Investment	Total Cost	Ave Volume in Group
6 Low Cost Plants	\$0.0307	\$0.0704	\$0.0098	\$0.0237	\$0.0120	\$0.1466	65,549,194
6 High Cost Plants	\$0.0662	\$0.1467	\$0.0131	\$0.0317	\$0.0430	\$0.3007	29,240,120
Simple Average	\$0.0526	\$0.1084	\$0.0113	\$0.0257	\$0.0302	\$0.2282	47,394,657
Weighted Average	\$0.0416	\$0.0940	\$0.0108	\$0.0262	\$0.0216	\$0.1941	47,394,657

Figure 3. Breakdown of Dry Whey Processing Costs.

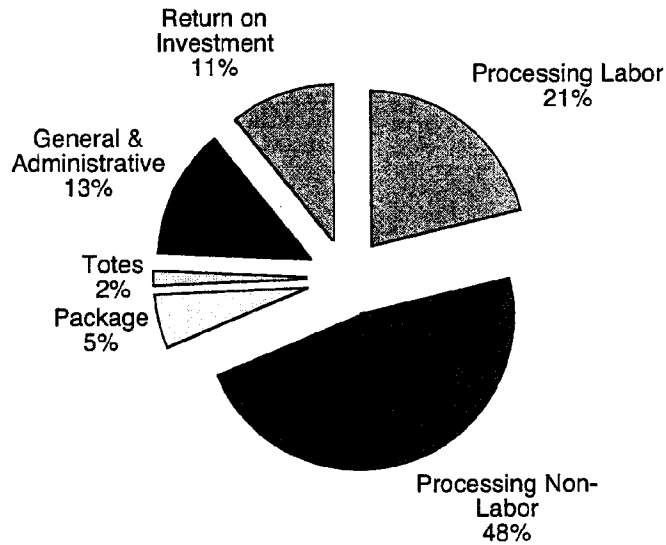




Table 3. Processing Costs for 8 Nonfat Dry Milk Plants.

	Processing Labor	Processing Non-Labor	Package	General & Administrative	Return on Investment	Total Cost	Ave Volume in Group
4 Low Cost Plants	\$0.0318	\$0.0577	\$0.0140	\$0.0211	\$0.0071	\$0.1318	66,605,863
4 High Cost Plants	\$0.0384	\$0.0850	\$0.0149	\$0.0161	\$0.0072	\$0.1617	39,681,700
Simple Average	\$0.0365	\$0.0720	\$0.0148	\$0.0165	\$0.0101	\$0.1484	55,066,936
Weighted Average	\$0.0339	\$0.0661	\$0.0143	\$0.0196	\$0.0072	\$0.1410	55,066,936

Figure 4. Breakdown of Nonfat Dry Milk Processing Costs.

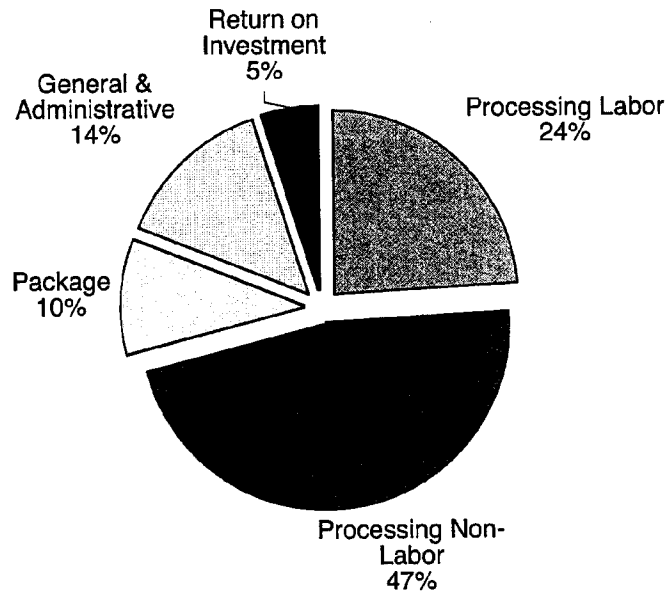
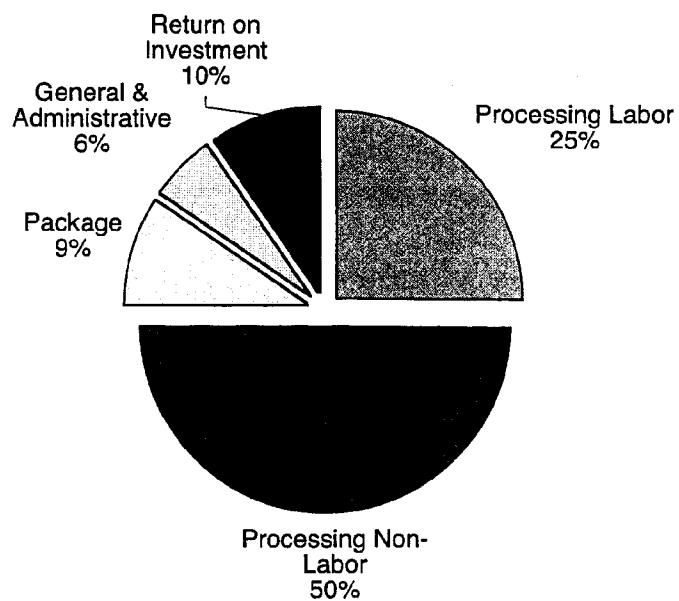


Table 4. Processing Costs for 4 Butter Plants.

	Processing Labor	Processing Non-Labor	Package	General & Administrative	Return on Investment	Total Cost	Ave Volume in Group
Simple Average	\$0.0353	\$0.0810	\$0.0106	\$0.0064	\$0.0239	\$0.1492	31,400,511
Weighted Average	\$0.0281	\$0.0551	\$0.0104	\$0.0064	\$0.0108	\$0.1108	31,400,511

Figure 5. Breakdown of Butter Processing Costs.



## Summary

Statistics are necessary if we are to transform raw data into information. In this paper, plants are ranked within the products of interest from lowest to highest total processing cost. Following CDFA's methods of reporting, weighted average values for the low cost half of the sample and the high cost half are computed. A weighted average calculation is also done for the entire group. A simple average is further reported.

More than half of the cheese plants in the sample have processing costs that exceed the current federal milk marketing order (FMMO) make allowance. This represents about 31 percent of the cheese in the sample. All but two plants have processing costs that exceed the FMMO make allowance for whey and they represent about 67 percent of the whey volume.

Exactly half of the nonfat dry milk participants cannot achieve processing costs indicated by the make allowance and they account for 49 percent of the volume of product in the sample. And, three out of the four butter plants found the butter make allowance insufficient. They represented 69 percent of the volume in the sample.

Further analyses will explore the reasons as to why costs vary from plant-to-plant. Size is certainly a factor but there are others to consider. Highly seasonal processing patterns might increase costs, a diverse product mix, plant ownership (cooperative v.s. private), etc. may also influence processing costs. Understanding these costs are an important part of a larger modeling effort within the Cornell Program on Dairy Markets and Policy. They also provide a useful benchmark for policy makers and government regulatory agencies as they contemplate changes in the product price formulas.

## Appendix A—Directions for Using the Cost of Processing Program

# Cornell Cost of Processing Program

Welcome to the Cost of Processing project (COP). We have been conducting cost of processing projects here at Cornell Program on Dairy Markets and Policy for more than 20 years. In the past, fluid plants, cheese and whey plants, and butter/nonfat dry milk plants have been surveyed and the costs of processing determined. This project is in the same family of projects but it has some new features.

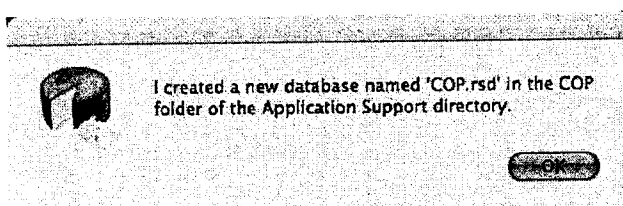
Previous efforts sought out “best practice” plants and plants with a fairly streamlined product mix. This meant that we didn’t need to make a significant effort to allocate costs across multiple enterprises. We typically conducted those surveys with a paper response form. This time, we are able to include plants with a much wider product mix and, because the survey instrument is a computer program, we are able to limit the questions asked to those which are relevant to each plant.

Please rest assured that the confidentiality of your responses is of the utmost concern to us. We have never had a breach of confidence in any of our previous projects and we will continue to hold ourselves to that high standard. Although this survey is being conducted on the computer, it is a stand-alone program that resides on your computer only until you are ready to send in the results. When you are ready to send results you will need to be connected to the internet. The database itself that is sent is encrypted and the connection that is made to Cornell is done with a “secure socket layer” assuring that your data cannot be lost or stolen—our security is as high as web sites which accept credit card data.

## Starting the program

The program which you have downloaded or received on a disk is entitled “COP.exe” and is compatible with Windows 98 through Windows XP. It is also available in Macintosh or Linux format. If you would prefer one of those operating systems, please contact Mark Stephenson at (607) 255-0324 and it will be sent to you.

There is no installation of the program other than to copy the program file to a new directory. The first time that you launch the program a dialog box will appear as follows:



A new file will be created in the Application Support directory of your user folder, and it will be called “COP.rsd”. This is the database file with your responses in it. If you change the name of this file or delete it, a new file will be created with

the original file name. As you enter data into the program, there is no need to save the data. Every time you navigate from one screen to another, or when you quit the program, the data are automatically written to the disk.

The first data entry screen collects contact information. This should be filled out with the name and other information about who we should contact if we have questions about any data entries. It also tells us a bit about the plant itself—its location and ownership type.

The screenshot shows a software window titled "General Information" with a "Wonderful Cheese" dropdown menu at the top. On the left, there is an "Add Notes" button. The form is divided into two columns: "Contact Person" and "Plant Location".

Contact Person:	Fred Smith	Plant Location	
Company Name:	Wonderful Cheese Co.	Plant Name:	Wonderful Cheese
Contact Address1:	123 Milky Way	Plant Address1:	123 Milky Way
Contact Address2:		Plant Address2:	
City, State, ZIP:	Vista WI 54000	City, State, ZIP:	Vista WI 54000
Country:	USA	Country:	USA
Contact Phone1:	(715) 123-4567	What is the structure of plant ownership?	Private
Contact Phone2:			
Contact eMail:	Fred@Wonderful.com		

At the bottom left, there is a note: "You will need to enter a year's worth of data--please choose a recent 12 month period. Some values will be requested on a monthly basis and some on an annual basis. You may want to select your most recently completed fiscal year." To the right of this note is a dropdown menu showing "Jan-04 through Dec-04".

On this screen you also need to choose a recent 12 month time period. Much of the data that we ask for is annual but there are a few places where we would like monthly data. This helps us have a clearer idea of how seasonally the plants operates. We suggest that you choose a 12 month time period that corresponds to your fiscal year if that will make annual data summary easier for you.

When you are finished with this screen, you navigate to the next screen by clicking on the "Next Screen" button in the upper right-hand corner of the screen or by selecting "Next Screen" from the Screens menu. Alternately, you can use the key combination "ctrl-N" (cmd-N on an Apple computer) to move forward to the next screen.

You will notice that every screen has an "Add Notes" button in the upper left-hand corner. This button will present a small window that will enable you to enter any reminder notes to yourself or explanations to me about unusual data entries. For example, in the first screen you might have a note that explains: "The plant had a major investment in drying facilities during this fiscal year." Adding notes are not mandatory but they may provide clarity. Any screen that has a note added will be labeled with "Edit Notes" instead of "Add Notes" button.

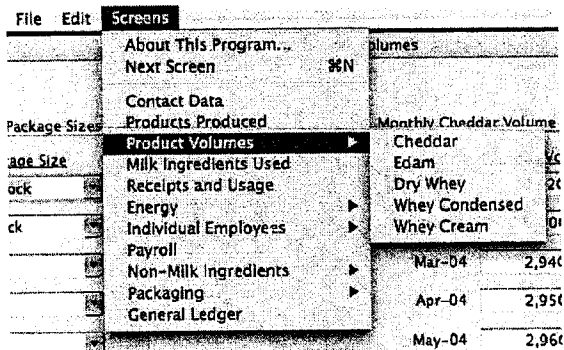
To some extent, the data need to be entered in a sequential order. This is done because the answers on any given screen will determine which questions you are asked on subsequent pages. For example, the screen below determines what products were produced and sold from the plant during the year that you chose. Select or enter all of the relevant products from the pulldown boxes. If you produce a unique product that isn't in the selection list, you may simply type your product in the pulldown box. For example, Edam was not a cheese type in the list. The selections on this page will determine questions on subsequent pages.

The screenshot shows a software interface titled "Products Produced". In the top left corner, there is a button labeled "Add Notes". In the top right corner, there is a button labeled "Next Screen". The main area of the screen is divided into four vertical columns, each representing a product category:

- Fluid Products:** A vertical list of 15 empty pulldown menus.
- Soft Products:** A vertical list of 15 empty pulldown menus.
- Cheese Products:** A vertical list of 15 pulldown menus. The first two are selected and show "Cheddar" and "Edam". The remaining 13 are empty.
- Dry Products:** A vertical list of 15 empty pulldown menus.

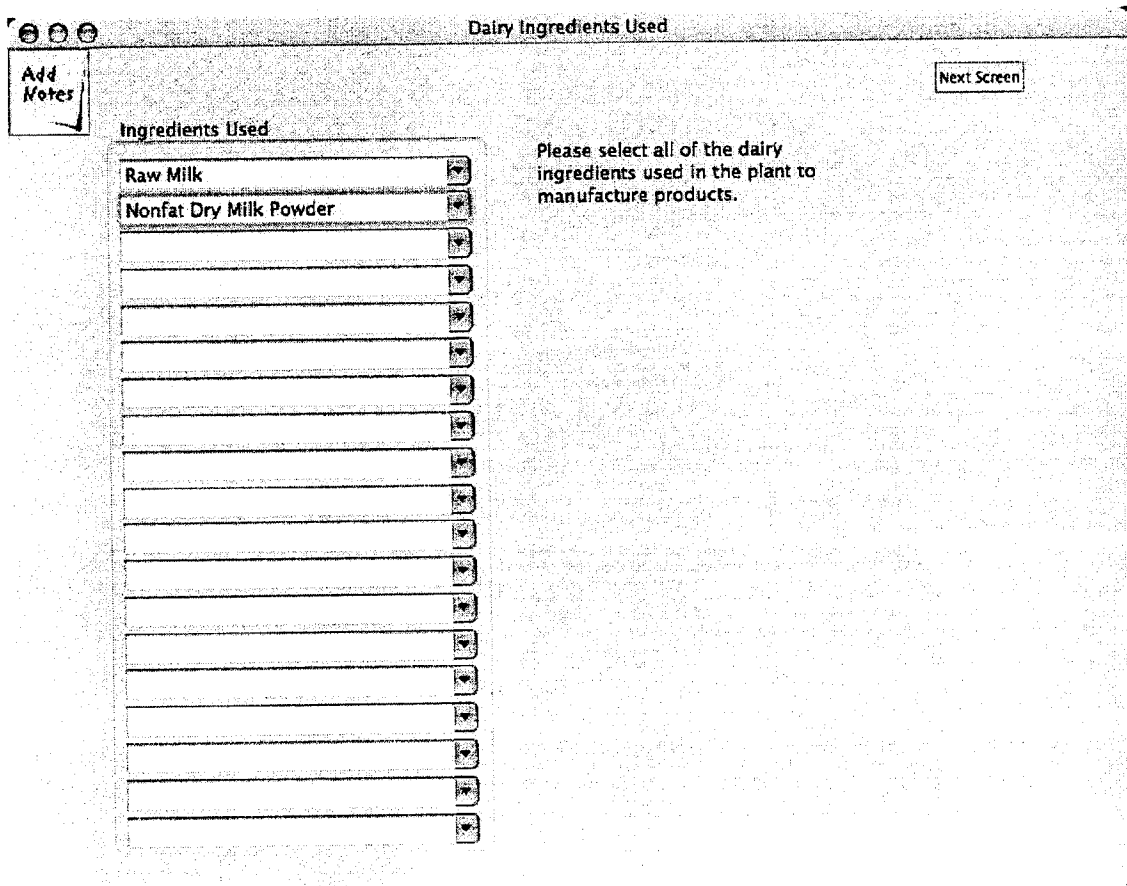
Below the "Dry Products" column, there is a section titled "Bulk Liquid Products" containing two pulldown menus. The first is selected and shows "Whey Condensed", and the second is selected and shows "Whey Cream".

Again, "ctrl-N" moves you to the next page. The next page(s) will ask you questions about the annual production in various package sizes for all of the products that you se-



The Screens Menu lets you navigate through all of the entry screens. Once the products and package sizes have been entered, you will see that the screens menu now has additional screens to access such as the product volume screens and the package sizes.

The next page is similar to the screen that allowed you to select the products produced at the plant. However, this screen asks you to select all of the milk ingredients used at the plant. You may select ingredients from the list or enter other dairy ingredients by typing them in.





After selecting the dairy sources used to make product at the plant, you are asked to reconcile their component usage in the plant. Here, we need inventories and purchases of the butterfat and the solids-not-fat (SNF) for the year as well as an accounting of their use. These do not need to exactly equal as there is an allowance for plant shrink. However, please try to carefully account for the solids used during the year.

This is an important data screen. The pounds of total solids in various products are used in the calculations to allocate processing costs that can't otherwise be allocated. If you don't know the the SNF in the cheese produced, it can be estimated by accounting for the SNF in the cheese vat and subtracting from that the SNF in the whey products produced from the vat.

Reconciliation of Receipts and Usage							
Add Notes							Next Screen
Receipts	Jan-04 Bfat Inventory, lbs	Jan-04 SNF Inventory, lbs	Pounds Butterfat Purchased	Pounds SNF Purchased	Dec-04 Bfat Inventory, lbs	Dec-04 SNF Inventory, lbs	
Raw Milk	36,700	87,500	13,101,900	31,237,500	33,030	78,750	
Nonfat Dry Milk Powder	225	43,650	1,164	231,636	250	48,500	
	36,925	131,150	13,103,064	31,469,136	33,280	127,250	
	13,106,709 total pounds of butterfat available		31,473,036 total pounds of solids-not-fat available				
Usage:	Pounds Butterfat Used in Product	Pounds SNF* Used in Product					
Cheddar	12,360,000	8,750,000					
Edam	5,340	6,130					
Dry Whey	30,000	19,185,000					
Whey Condensed	94,741	2,131,680					
Whey Cream	98,000	3,400					
	12,588,081	30,076,210					
	12,588,081 total pounds of butterfat used		30,076,210 total pounds of solids-not-fat used				
* Please note that SNF in cheese may be estimated by accounting for the SNF in the cheese vat and subtracting from that the SNF in all whey products produced from that cheese vat.							

The next set of pages deals with energy usage in the plant. These should be entered on a monthly basis so that we can determine the cost and units used. The first pull-down box lets you choose the energy source—Electricity, various forms of gas, fuel oils, coal and purchased steam. To the extent possible, use the next pull-down box to allocate the usage. For example, if you have an electric meter that is unique to the cheese plant, then you should select either “Cheese Products” (as shown below). This should be done for all electric or gas meters. If a meter is not specific to say the cheese or whey operations in the plant, you should choose “Unallocated” and we will allocate the usage for you.

You may add as many meters and/or energy sources as needed by using the “Add Another Energy Source” button on the bottom right corner of the screen. When you are done with the last energy source, “ctrl-N” will take you to the next set of screens.

Energy Costs

Add Notes

Next Screen

Electricity

Product Category: Cheese Products

Invoice Identity: Cheese plant

	Cost	kWh
Jan-04	16,800	240,000
Feb-04	14,000	200,000
Mar-04	17,500	250,000
Apr-04	17,850	255,000
May-04	18,200	260,000
Jun-04	18,550	265,000
Jul-04	17,500	150,000
Aug-04	16,800	240,000
Sep-04	16,450	235,000
Oct-04	16,100	230,000
Nov-04	16,100	230,000
Dec-04	15,750	225,000
Annual Total	201,600	2,780,000

Please report all forms of energy used in the plant. If you receive energy bills for more than one meter at the plant, please try to assign it's use to product categories. For example, if one electric bill is for a meter into the cheese plant then report that as energy used for cheese processing. If a second meter is for the whey facility, then report that as energy for whey. If a meter records energy for many products, then report it's costs and units as unallocated. You can identify your meters in the box above like: "Shore-to-Shore Electric, meter 3".

Add Another Energy Source

The next set of screens are the employee screens. Because labor is perhaps the most important cost of processing, please take time to do this carefully. We would like you to enter each employee separately in the program (although there is another option that will be explained later on the next page). On this screen you have the option of entering the payroll and benefits on a monthly basis or as an annual total for the employee. The example is showing a monthly entry where the annual amount is automatically totaled for you.

The most important part of the employee cost screens are that you allocate their labor across the possible job descriptions in the pull-down boxes on the right-hand side of the page. The example below shows that Elmer spent about 75% of his time in Receiving, 20% in the Pasteurizer/Separator/CIP area, and about 5% as general plant labor. This kind of breakdown should be done for each employee. Add additional employees by clicking on the "Add Another Employee" button on the bottom right. When done, you may advance to the next screen by hitting "ctrl-N".

Employees
Next Screen

Add  
Notes

Employee Name:

Employee ID:   
*(optional)*

	Payroll	Tax and Fringes
Jan-04	3,333	1,100
Feb-04	3,333	1,100
Mar-04	3,333	1,100
Apr-04	3,333	1,100
May-04	3,333	1,100
Jun-04	3,333	1,100
Jul-04	3,333	1,100
Aug-04	3,333	1,100
Sep-04	3,333	1,100
Oct-04	3,333	1,100
Nov-04	3,333	1,100
Dec-04	3,333	1,100
<b>Annual Total</b>	<b>39,996</b>	<b>13,200</b>

The best method of allocating labor costs across products is by employee and job function. You may alternatively provide summary information in a following screen. If you enter information on an employee-by-employee basis, the summary data will be automatically generated for you.

You may also enter data on a monthly basis or an annual total for each employee.

Job Description	% of Time
Receiving & Tanker Washing	75
Pasteurizer/Separator/CIP	20
General Plant Labor	5
<input type="text"/>	<input type="text"/>
<input type="text"/>	<input type="text"/>
<input type="text"/>	<input type="text"/>

Because we realize that this is a time consuming task for larger plants and these plants may already have this level of disaggregation in their accounting system, there is a second option.

If you have entered all employees on the previous screens, you will find the summary of payroll by job functions on this screen. If all employees have been entered individually, then there is no need to do anything on this screen.

If you already keep payroll by these, or similar, job descriptions as a part of your plant accounting, then you do not need to enter employees individually on the previous screens but can enter the summary values on this screen instead.

Labor Distribution

Add Notes

Next Screen

Job Function	Gross Payroll For the Period	Total Payroll Allocation
Receiving & Tanker Washing	29,997	39,897
Pasteurizer/Separator/CIP	7,999	10,639
Hard Cheese Processing		
Hard Cheese Packaging		
Whey Processing		
Whey Hauling		
Evaporator Labor		
Dryer Labor		
Powder Bagging		
Bulk Load Out		
Dry Warehouse Labor		
Cold Room Labor		
General Plant Labor	2,000	2,660
	<b>39,996</b>	<b>53,196</b>
<b>Other Known Factors From Payroll</b>		
Temporary Labor		
Plant Superintendent		
Plant Supervisors		
Plant Clerical		
Laboratory		
Maintenance Engineers		
		0
<b>Total Plant Payroll Costs</b>		<b>53,196</b>

If you have entered payroll data by employee and job function on previous screens, this screen reflects those allocation totals and you don't need to do anything in this screen. Indeed, calculated job function values cannot be edited in this screen. However, if you haven't entered individual employee data, you must enter annual values by job function category here.

The gross payroll column reflects wages paid while the total payroll column reflects wages plus taxes, fringe benefits, etc.

The lower group of job functions shown as "Other Known Factors" should be just entered as the total payroll dollars (including benefits).

The next screen(s) captures information about the non-dairy ingredients used to make products. The example below shows the data needed for a cheese plant. Some information about vat size, the typical yields of cheese, ingredient use and costs are requested. Please note: for these costs, you should use the cost from the most recent ingredient purchase and not an average cost from the year. We are trying to determine the current cost of processing and because these ingredients are often inventoried, we think that this approach is easier for you than adjusting all ingredients for beginning and ending inventories.

In general, you should tell us what you are using to put into a vat and not include product losses. We will add a 1% product loss to account for shrink.

**Cheese Ingredients**

Add Notes
Next Screen

45,000 Lb. vat makes 4,540 Lbs. of Cheese = 9.91 Yield per cwt.

Starter Tank:	Unit Ingredient Cost*	Unit	Units Used per Tank	
Starter Culture: \$	6.	per can	8.9	cans used per starter tank
Starter Medium: \$	70.	per pound	1.2	pounds used per starter tank
10. Vats can be made per tank of starter culture.				

	Unit Ingredient Cost*	Unit	Units Used per Vat	
Rennet: \$	0.4297	per ounce	100.	ounces used per vat
Color: \$	0.0922	per ounce	50.	ounces used per vat
Salt: \$	0.0593	per pound	85.	pounds used per vat
Calcium Chloride: \$	0.009	per ounce	120.	ounces used per vat
		per		s used per vat
		per		s used per vat
		per		s used per vat
		per		s used per vat

\* Please calculate the cost from the most recent receipt of the ingredient purchased—not an average cost.

Total cost per vat = \$67.44  
Total cost per Lb. of cheese = \$0.014855

The next screen(s) relate to packaging costs. We are again asking you to use recent receipts for costs and not an annual average cost. We are building up the cost of packaging based on usage. If you use something else, like glue or labels, then please add them on a per unit basis (in this example, 40 lb block). Also, a 1% loss factor will be applied to the calculated packaging costs in the summary.

Please note: we are only collecting the costs of packaging for 640, 500 and 40 lb. blocks/barrels of cheese; bags and totes of various sizes for powders; and butter in 1/4 and 1 lb. consumer packages and larger commercial sizes (not restaurant packages).

If you purchase pallets for one-way use—in other words, you don't expect them to come back again—then enter the cost of a pallet in the appropriate box. If you purchase pallets and expect that most of them will come back at a later time, the annual pallet expense will be added on the "General Ledger" screen later.

40 Lb. Cheese Packaging
Next Screen

Average cheese weight per 40 Lb. block:	41.50	lbs.
Average inches of tape used to seal a 40 Lb. box:	32	inches
Average feet of stretch wrap used to secure a pallet:	100	feet
Average number of blocks secured on a pallet:	45	blocks
If using one-way pallets, what is the cost of a pallet:	10	per pallet

	Unit Packaging Cost*
Cost per 40 Lb. box	0.5190
Cost per bag	0.1869
Cost per liner	0.2800
Cost yard of tape	0.0100
Cost per yard of stretch wrap	0.0120

1. If the pallets are not disposable, i.e. they eventually are returned to you, an annual pallet cost will be entered later.  
 \* Please calculate the cost from the most recent receipt of the ingredient purchased—not an average cost.

Total cost per 40 Lb. block = \$1.2259  
 Total cost per lb. of cheese = \$0.0295

Some costs probably cannot be allocated such as the telephone or laundry expenses. Those should be just entered in the "General Plant" column.

The most accurate accounting of the costs of processing would include the consumption of your capital. In order to do this, we would have to look at an economic depreciation of the plant and equipment—this is beyond the scope of the study. Instead, we are asking for the depreciation that was claimed on your tax forms recognizing that it will overstate the consumption of newer equipment and understate the the loss of older (fully depreciated) equipment.

We are also asking you to provide a market value estimate of your plant and equipment. You probably haven't considered the sale of your plant recently but you shouldn't agonize over this number. The number will be used to calculate a return on investment as a legitimate cost of your business.

The bottom of the page also includes a short-term interest expense. This value should not include the interest paid on long-term loans as this value will be captured in the return on investment. However, it should include the interest on loans of one year or less and is meant to reflect a cost of working capital.

### Finishing Up

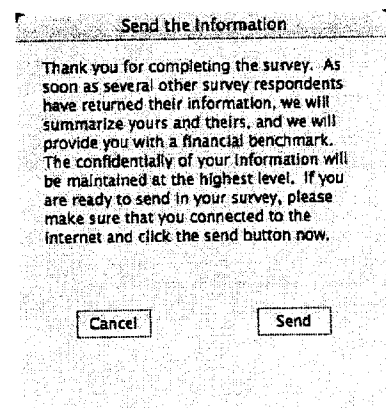
You may quit the program any time that you wish and return to entering values later. When you quit the program, all data are automatically saved to the file. We consider the current version of the program to be very workable but not final. If your computer is connected to the internet the program will check to see if a newer version is available. We have been correcting errors and adding features as we get feedback from users. If a newer version is available, you will be prompted as to whether you want to download the latest version. If you do, simply replace your existing program with the one you have downloaded. The data file will not have to be altered.

When you are done and satisfied with the data, you will need to submit it to us. The File menu at the top of the screen has a selection entitled "Mail the Survey". Selecting this brings up the following dialog box:

Just hit the "Send" button on this screen and the program will send us the encrypted data file on a secure port. As soon as it is sent, the send screen will go away.

When the data are submitted, it will be scrutinized by us for completeness, accuracy and consistency. If there are errors or questions, we will contact you for clarification. You, of course are welcome to contact us at any time to ask questions or report problems with the program.

We will send you an acknowledgment that we have received your submission. We thank you for participating in the project and we will send you a report of your plant and later, when all of the plants are done, a benchmark of your plant's performance relative to other participating plants.



**Appendix B—Recent Monthly Values for Moody's Baa Corporate Bond Index**



### Moody's Baa Corporate Bond Index<sup>a</sup>

Month	Yield
Jan-03	7.35
Feb-03	7.06
Mar-03	6.95
Apr-03	6.85
May-03	6.38
Jun-03	6.19
Jul-03	6.62
Aug-03	7.01
Sep-03	6.79
Oct-03	6.73
Nov-03	6.66
Dec-03	6.60
Jan-04	6.44
Feb-04	6.27
Mar-04	6.11
Apr-04	6.46
May-04	6.75
Jun-04	6.78
Jul-04	6.62
Aug-04	6.46
Sep-04	6.27
Oct-04	6.21
Nov-04	6.20
Dec-04	6.15
Jan-05	6.02
Feb-05	5.82
Mar-05	6.06
Apr-05	6.05
May-05	6.01
Jun-05	5.86
Jul-05	5.95
Aug-05	5.96
Sep-05	6.03
Oct-05	6.30
Nov-05	6.39
Dec-05	6.32
Jan-06	6.24
Feb-06	6.27
Mar-06	6.41
Apr-06	6.68
May-06	6.75
Jun-06	6.78
Jul-06	6.76

<sup>a</sup> Baa Money Market Funds and Bond Funds rated Baa are judged to be of an investment quality similar to Baa-rated fixed income obligations, that is, they are considered as medium-grade investment vehicles.