

CALIFORNIA #13 7/26/01 6/28/01

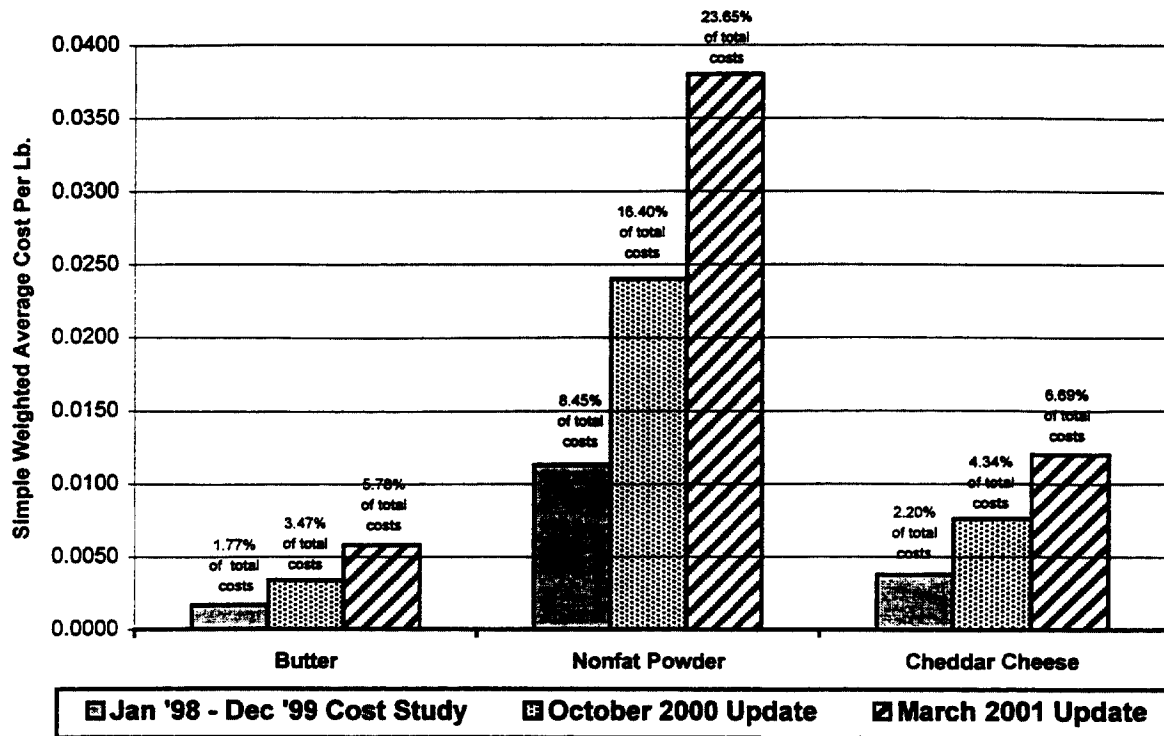
DAIRY INFORMATION BULLETIN

Vol. LVIII - No. 2

Data for April 2001

Issued June 2001

California Natural Gas Utility Costs For Cost Studies: January 1998-December 1999, Updated for October 2000, and March 2001



Natural gas costs are weighted by pounds of product processed at each plant.
 Butter costs based on 8 plants that processed 99.9% of butter in California in 1999.
 Nonfat powder costs based on 11 plants that processed 100% of the nonfat dry milk in California in 1999.
 Cheddar Cheese costs based on 9 plants that processed 92.9% of the Cheddar and Monterey Jack cheese in California in 1999.

For further information see Cost Study inserted in back of this publication.



The CALIFORNIA DAIRY INFORMATION BULLETIN (ISSN-0892-4406) is published monthly as a cooperative effort of the:

California Department of Food and Agriculture

William (Bill) Lyons, Jr., Secretary
Robert "Tad" Bell, Undersecretary
Daniel E. Webb, Deputy Secretary
Vanessa Arellano, Assistant Secretary

Dairy Marketing and Milk Pooling Branches

1220 N Street, Room A-224
Sacramento, CA 95814-5621
Telephone: (916) 654-1456

- and -

USDA/NASS

California Agricultural Statistics Service

P.O. Box 1258
Sacramento, CA 95812
Telephone: (916) 498-5165



Milk price information is available on a recorded message:

1-800-503-3490

In Sacramento or out of California, please call **(916) 442-MILK**

Home Page Address: <http://www.cdfa.ca.gov/dairy>

E-Mail: dairy@cdfa.ca.gov

The Dairy Statistics Unit appreciates the cooperation of all dairy processors by filing monthly statistical reports with our office. These reports are carefully reviewed in an attempt to identify and correct any errors in reporting. All data is received directly from either California dairy processors or federal Milk Market Administrator offices in regions neighboring California. While data is submitted from reliable sources, no representation is made as to the complete accuracy of the data reported. Data is published subject to errors, revisions, or withdrawals without notice.

POSTMASTER: Send address changes to California Dairy Information Bulletin, Candace Gates, 1220 N Street, Room A-224, Sacramento, California 95814-5621.

DAIRY INFORMATION BULLETIN

Table of Contents

Dairy Industry News	Pages 3, 4
Table 1: <i>California Milk Production (by Months)</i>	Page 5
Table 2: <i>California Milk Production (by County), Graph</i>	Pages 6, 7
Table 3: <i>California Milk Utilization (by Class, Months)</i>	Pages 8, 9
Table 4a: <i>Pool Milk Production (by Months)</i>	Page 10
Table 4b: <i>California Net Milk Available (by Months)</i>	Page 10
Table 5: <i>Class 1 Sales (by Months)</i>	Page 11
Table 6: <i>Class 1 Sales (by Marketing Area)</i>	Page 12
Table 7: <i>Class 2 Production (by Months)</i>	Page 13
Table 8: <i>Class 3 Production (by Months)</i>	Page 14
Table 9: <i>Class 4a/4b Production (by Months)</i>	Page 15
Table 10: <i>Average Prices Paid Producers for Market Milk (by Months)</i>	Page 16
Table 11: <i>Average Prices Paid Producers for Manufacturing Milk (by Months)</i>	Page 16
Table 12: <i>Class and Pool Prices</i>	Page 17
Table 13: <i>Pool Price Data, Daily Average</i>	Page 18
Table 14: <i>Commodity Prices Used to Calculate Classes 2, 3, 4a, 4b (by Months)</i>	Page 19
Table 15: <i>Commodity Prices (by Week)</i>	Page 19
Table 16: <i>Commodity Prices Used to Calculate Class 1 (by Months)</i>	Page 20
Table 17: <i>Milk Production Cost Index, Mailbox Prices</i>	Page 21
Table 18: <i>Average Retail Prices – Southern & Northern California</i>	Page 22
Minimum Prices	Page 23
Table 19: <i>Retail Price Data</i>	Pages 24, 25
Calendar	Page 26
Key Contacts for Department Dairy Services	Pages 27, 28

DAIRY INDUSTRY NEWS

DEPARTMENT ANNOUNCES HEARING DECISIONS

On March 28, 2001, the Department conducted a public hearing to consider adding a value for dry whey to the Class 4b formula, which prices milk used to make cheese other than cottage cheese. On March 30, 2001, the Department conducted a public hearing to consider changes to the way organic Class 1 milk is accounted for in the Pooling Plan for Market Milk.

March 28 Hearing - After giving careful consideration to the evidence and testimony entered into the hearing record, the Department has determined not to make any amendments to the current Class 4b pricing formula, based partly upon the following factors:

- ◆ The current minimum Class 4b pricing formula is adequate to generate sufficient milk supplies to meet market demand.
- ◆ In order for California cheese to be competitive in the nation's largest cheese markets (Eastern U.S.), California cheese must be priced somewhat lower than cheese produced in states that are in closer proximity to the markets.
- ◆ The net effect of adding a value for dry whey to the Class 4b pricing formula, per the proposal, would result in a significant reduction in the competitiveness of California cheese in national and regional markets.
- ◆ Since the Class 4b price is the market clearing price for about 40% of California's pooled milk utilization, losing even a fraction of market share will adversely impact the production and marketing of California bulk milk.

March 30 Hearing - After giving careful consideration to the evidence and testimony entered into the hearing record, the Department has determined not to make any amendments to the current Pooling Plan for Market Milk regarding organic milk, based partly upon the following factors:

- ◆ The petitioner failed to satisfactorily demonstrate that the Food and Agricultural Code provides authority for processors of a particular type of milk or milk product to be granted special status or treatment in the Pooling Plan.
- ◆ Only organic processors would benefit directly from the proposal. Whether the benefits were passed on in some part to organic producers, or to consumers, would be entirely at the discretion of the processors receiving the benefit.
- ◆ The proposal made by the petitioners would significantly reduce the obligation of organic processors to the pool. The Department would not make such a change effective without first issuing the proposed change to a referendum vote of market milk producers. Given testimony presented at the hearing, the proposed change would be defeated overwhelmingly by producers in a statewide referendum.

Copies of the Department's Statement of Determinations for both hearings may be obtained by contacting the Dairy Marketing Branch or by accessing the Department's website at www.cdffa.ca.gov/dairy.

Please contact Eric Erba or Tom Gossard at the Dairy Marketing Branch regarding the dry whey hearing, and Bob Horton or John Lee at (916) 654-0795 regarding the hearing on organic milk.

Court Decision Rendered on Shamrock Foods Appeal

On May 4, 2001, the California Department of Food and Agriculture received the California Court of Appeals decision on the State of California v. Shamrock Foods Company (an Arizona milk processor selling its product in California) appeals case.

Shamrock Foods had appealed the California Superior Court of San Diego County decision which ruled in favor of the State of California, affirming that Shamrock Foods sold milk in California that did not meet compositional and labeling standards set by the Food and Agriculture Code and made statements about their milk that were false. The court decision ordered Shamrock Foods to pay \$696,000 in civil penalties and enjoined them from selling milk in California that did not meet code standards. Shamrock Foods appealed this decision and the Court of Appeals ruled in Shamrock's favor, however, the State of California petitioned for a review of the decision and the Supreme Court upheld the original trial court decision.

The Court of Appeals considered other issues Shamrock raised in the appeal, but again, affirmed the judgement of the trial court in favor of the State of California.

DATA SUMMARIES

COMMERCIAL PRODUCTION OF ALL MILK

Production of all milk on farms and ranches in California during April 2001 totaled 2.78 billion pounds – 2.0 percent more than the quantity produced during April 2000. For the twelve months ending in April 2001, total milk production increased 3.4 percent relative to the same period in 2000.

MANUFACTURED PRODUCTS

For the month of April 2001, as compared to April 2000, the total manufacture of butter decreased 8.0 percent; manufacture of nonfat dried milk for human consumption decreased 4.1 percent; manufacture of cheese increased 10.6 percent; and manufacture of frozen products increased 3.3 percent.

SALES OF CLASS 1 MARKET MILK

Sales of Class 1 market milk products in California during April 2001 were up 2.1 percent relative to sales during April 2000.

MILK PRODUCTION 1/

Table 1 - Commercial Production of Market and Manufacturing Milk,
in Thousand Pounds, in California, by Month, May 1999 - Apr 2001 2/

Month	Market			Manufacturing			Total		
	1999-2000	2000-2001	% Change	1999-2000	2000-2001	% Change	1999-2000	2000-2001	% Change
	<i>Bulk Milk, Total for Month Compared to Same Month Prior Year</i>								
May	2,621,217	2,760,890	5.3%	33,810	35,328	4.5%	2,655,027	2,796,218	5.3%
June	2,467,756	2,631,735	6.6%	32,125	37,581	17.0%	2,499,881	2,669,316	6.8%
July	2,479,178	2,745,053	10.7%	29,997	36,394	21.3%	2,509,175	2,781,447	10.9%
August	2,565,468	2,645,520	3.1%	32,217	33,167	2.9%	2,597,685	2,678,687	3.1%
September	2,474,749	2,562,894	3.6%	41,056	29,938	-27.1%	2,515,805	2,592,832	3.1%
October	2,569,263	2,647,305	3.0%	33,171	31,780	-4.2%	2,602,434	2,679,085	2.9%
November	2,507,210	2,558,462	2.0%	31,051	26,443	-14.8%	2,538,261	2,584,905	1.8%
December	2,610,336	2,673,283	2.4%	29,014	24,802	-14.5%	2,639,350	2,698,085	2.2%
January	2,675,387	2,725,280	1.9%	30,472	22,849	-25.0%	2,705,859	2,748,129	1.6%
February	2,532,143	2,505,698	-1.0%	23,688	20,092	-15.2%	2,555,831	2,525,790	-1.2%
March	2,699,327	2,780,611	3.0%	37,097	25,908	-30.2%	2,736,424	2,806,519	2.6%
April	2,694,556	2,758,191	2.4%	34,332	25,370	-26.1%	2,728,888	2,783,561	2.0%
Jan-Apr Total	10,601,413	10,769,780	1.6%	125,589	94,219	-25.0%	10,727,002	10,863,999	1.3%
May-Apr Total	30,896,590	31,994,922	3.6%	388,030	349,652	-9.9%	31,284,620	32,344,574	3.4%
2000 Total	31,826,555			381,022			32,207,577		
Current Month	<i>Bulk Milk, Average Daily Basis Compared to Prior Month</i>								
	2000-2001	% Change	2000-2001	% Change	2000-2001	% Change			
April	89,819		1,144		90,963				
May	89,061	-0.8%	1,140	-0.4%	90,201	-0.8%			
June	87,725	-1.5%	1,253	9.9%	88,977	-1.4%			
July	88,550	0.9%	1,174	-6.3%	89,724	0.8%			
August	85,339	-3.6%	1,070	-8.9%	86,409	-3.7%			
September	85,430	0.1%	998	-6.7%	86,428	0.0%			
October	85,397	0.0%	1,025	2.7%	86,422	0.0%			
November	85,282	-0.1%	881	-14.0%	86,164	-0.3%			
December	86,235	1.1%	800	-9.2%	87,035	1.0%			
January	87,912	1.9%	737	-7.9%	88,649	1.9%			
February	89,489	1.8%	718	-2.6%	90,207	1.8%			
March	89,697	0.2%	836	16.4%	90,533	0.4%			
April	91,940	2.5%	846	1.2%	92,785	2.5%			

1/ Data are subject to revision.

2/ Includes total milk sold. Excludes milk left on ranch.

MILK PRODUCTION BY COUNTY 1/

Table 2 - Commercial Production of Bulk Milk, Average Milk Fat and Solids-Not-Fat Test, in Pounds, in California, by Counties and Regions, April 2001 2/

County and Region	Bulk Milk			Percent change from 2000	Average Milk Fat Test	Average Solids-Not-Fat Test
	Market	Manufacturing	Total			
Alameda						
Alpine						
Amador						
Butte	1,076,503	48,586	1,125,089	-12.6%	3.89%	8.93%
Calaveras						
Colusa						
Contra Costa	5,589,779	0	5,589,779	3.6%	3.64%	8.64%
Del Norte	4,567,269	861,305	5,428,574	7.1%	3.76%	8.86%
El Dorado						
Fresno	151,654,636	141,254	151,795,890	2.8%	3.62%	8.77%
Glenn	21,956,155	3,261,058	25,217,213	-0.3%	3.65%	8.73%
Humboldt	15,441,388	8,424,238	23,865,626	-4.5%	4.01%	9.01%
Kern	127,762,708	341,130	128,103,838	13.6%	3.66%	8.69%
Kings	230,397,201	376,303	230,773,504	4.2%	3.65%	8.77%
Lake						
Lassen						
Madera	75,835,217	423,149	76,258,366	8.3%	3.68%	8.74%
Marin	17,125,829	282,178	17,408,007	-6.8%	3.54%	8.84%
Mariposa						
Mendocino						
Merced	366,873,370	2,717,811	369,591,181	3.8%	3.72%	8.79%
Modoc						
Monterey	3,831,347	0	3,831,347	-17.7%	3.86%	8.83%
Napa						
Nevada						
Placer						
Plumas						
Sacramento	27,820,330	1,395,691	29,216,021	-3.5%	3.80%	8.75%
San Benito	1,165,555	0	1,165,555	5.9%	3.77%	8.74%
San Francisco						
San Joaquin	170,138,457	1,977,729	172,116,186	2.3%	3.74%	8.75%
San Mateo						
Santa Clara	1,031,902	0	1,031,902	16.2%	3.49%	8.69%
Santa Cruz						
Shasta						
Sierra						
Siskiyou	2,826,370	0	2,826,370	6.3%	3.78%	8.82%
Solano	2,641,737	0	2,641,737	-3.5%	3.76%	8.74%
Sonoma	53,952,375	228,540	54,180,915	-1.0%	3.69%	8.85%
Stanislaus	274,196,411	1,803,980	276,000,391	-1.8%	3.73%	8.77%
Sutter						
Tehama	7,651,825	872,898	8,524,723	-6.9%	3.84%	8.83%
Trinity						
Tulare	716,672,536	752,260	717,424,796	11.3%	3.64%	8.75%
Tuolumne						
Yolo	3,146,200	0	3,146,200	35.0%	4.26%	8.97%
Yuba	5,625,680	0	5,625,680	-0.5%	4.03%	8.88%
N. California	2,293,813,835	23,908,110	2,317,721,945	5.2%	3.68%	8.77%

MILK PRODUCTION BY COUNTY 1/

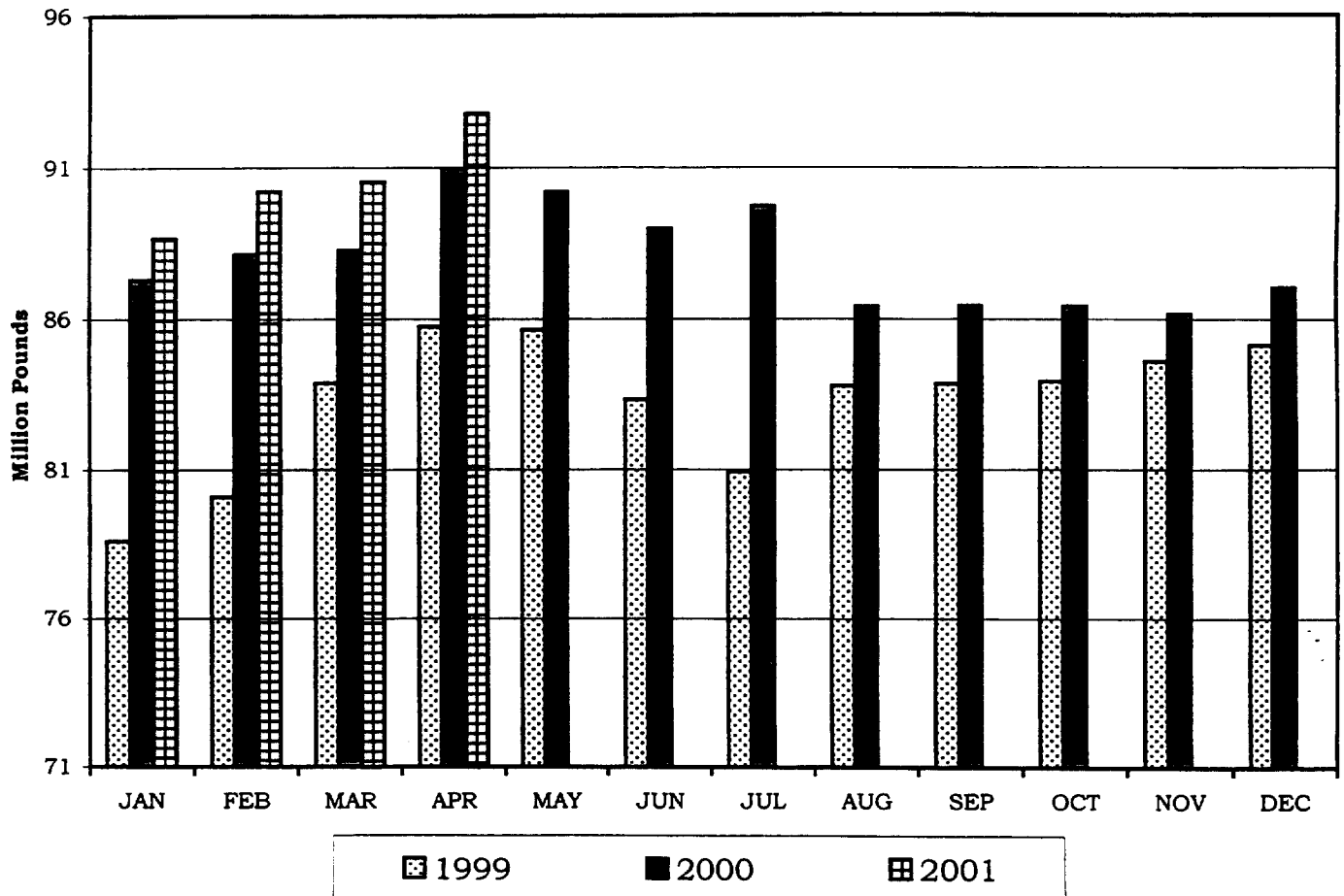
Table 2 - Continued - Commercial Production of Bulk Milk, Average Milk Fat and Solids-Not-Fat Test. in Pounds, in California, by Counties and Regions, April 2001 2/

County and Region	Bulk Milk			Percent change from 2000	Average Milk Fat Test	Average Solids-Not-Fat Test
	Market	Manufacturing	Total			
Imperial						
Inyo						
Los Angeles						
Mono						
Orange						
Riverside	173,345,333	159,649	173,504,982	-13.0%	3.57%	8.68%
San Bernardino	266,116,700	1,302,228	267,418,928	-11.2%	3.55%	8.76%
San Diego	11,212,084	0	11,212,084	-5.7%	3.43%	8.61%
San Luis Obispo						
Santa Barbara	5,041,654	0	5,041,654	7.4%	3.59%	8.76%
Ventura						
S. California	464,377,029	1,461,877	465,838,906	-11.5%	3.56%	8.71%
State Total	2,758,190,864	25,369,987	2,783,560,851	2.0%	3.66%	8.75%

1/ Counties not shown but include in total: Colusa, Mendocino, Santa Cruz, Placer, Shasta, Sutter, Imperial, Los Angeles, and San Luis Obispo.

2/ Data are subject to revision.

CALIFORNIA MILK PRODUCTION
Average Daily Basis 1999, 2000, 2001



MILK UTILIZATION 1/

Table 3 - Pooled Milk Utilization of Grade A Milk, by Classes and Months,
in Thousand Pounds, 2000 - 2001 2/

Month	Class 1 - Fat		Class 2 - Fat		Class 3 - Fat		Class 4a - Fat	
	2000	2001	2000	2001	2000	2001	2000	2001
January	12,249	12,298	3,747	4,317	5,826	8,332	43,116	37,787
February	11,574	11,264	4,066	3,698	8,606	7,928	37,641	33,550
March	12,496	12,246	4,742	5,013	10,593	11,586	36,645	31,478
April	11,478	11,925	4,754	5,410	11,562	12,202	33,398	30,033
May	12,301		5,095		14,268		30,344	
June	11,741		5,577		15,344		24,955	
July	12,080		4,639		16,246		25,447	
August	12,679		5,315		11,589		25,752	
September	12,027		4,542		8,781		29,747	
October	12,959		5,068		8,426		31,120	
November	12,660		6,864		8,014		30,493	
December	12,251		6,008		6,600		35,433	
Jan - Apr Total	47,797	47,733	17,309	18,438	36,587	40,048	150,800	132,848
Change from 2000		-0.1%		6.5%		9.5%		-11.9%
2000 Total	146,495		60,417		125,855		384,091	
Month	Class 1 - Snf		Class 2 - Snf		Class 3 - Snf		Class 4a - Snf	
	2000	2001	2000	2001	2000	2001	2000	2001
January	52,849	52,866	8,976	8,804	5,259	6,504	76,201	68,613
February	49,785	47,931	9,511	8,404	6,965	6,163	70,824	62,119
March	53,973	52,663	9,757	9,873	7,741	7,710	72,584	67,211
April	48,645	50,498	9,496	9,262	8,211	8,300	74,157	67,760
May	52,508		10,060		8,975		70,783	
June	49,722		9,373		8,652		66,406	
July	49,923		8,699		8,673		69,665	
August	52,278		10,341		8,376		61,353	
September	51,574		9,376		7,098		64,560	
October	55,089		9,534		6,935		64,435	
November	52,510		9,833		5,729		62,245	
December	50,507		10,035		4,590		68,126	
Jan - Apr Total	205,252	203,958	37,740	36,343	28,176	28,677	293,766	265,703
Change from 2000		-0.6%		-3.7%		1.8%		-9.6%
2000 Total	619,363		114,991		87,204		821,339	
Month	Fluid							
	2000	2001						
January	485,851	484,796						
February	458,886	441,066						
March	496,552	487,385						
April	447,587	468,781						
May	483,357							
June	457,258							
July	459,659							
August	481,070							
September	474,003							
October	506,394							
November	481,839							
December	463,912							
Jan - Apr Total	1,888,876	1,882,028						
Change from 2000		-0.4%						
2000 Total	5,696,368							

MILK UTILIZATION 1/

Table 3 - Continued - Pooled Milk Utilization of Grade A Milk, by Classes and Months,
in Thousand Pounds, 2000 - 2001 2/

Month	Class 4b - Fat		Quota - Fat 3/		Non-quota - Fat		Pool Total - Fat	
	2000	2001	2000	2001	2000	2001	2000	2001
January	35,364	41,185	29,295	29,546	71,007	74,373	100,302	103,919
February	32,336	38,310	27,445	26,850	66,779	67,900	94,224	94,750
March	36,329	43,471	29,687	30,141	71,118	73,653	100,805	103,794
April	36,098	42,213	28,478	29,206	68,811	72,577	97,289	101,783
May	36,650		29,284		69,374		98,658	
June	35,034		28,232		64,419		92,651	
July	38,280		29,139		67,554		96,693	
August	38,730		28,971		65,093		94,064	
September	37,535		28,101		64,530		92,631	
October	39,900		29,334		68,140		97,474	
November	38,351		28,375		68,007		96,382	
December	41,089		29,352		72,028		101,380	
Jan - Apr Total	140,127	165,179	114,905	115,743	277,715	288,503	392,620	404,246
Change from 2000		17.9%		0.7%		3.9%		3.0%
2000 Total	445,696		345,693		816,860		1,162,553	
Month	Class 4b - Snf		Quota - Snf 4/		Non-quota - Snf		Pool Total - Snf	
	2000	2001	2000	2001	2000	2001	2000	2001
January	89,217	103,628	70,543	71,337	161,993	169,077	232,536	240,414
February	82,659	96,487	66,110	65,073	153,636	156,031	219,746	221,104
March	91,007	107,509	71,452	73,181	163,610	171,786	235,062	244,967
April	93,128	107,429	68,851	71,047	164,786	172,203	233,637	243,250
May	96,183		71,080		167,430		238,510	
June	92,523		68,719		157,957		226,676	
July	99,488		71,175		165,273		236,448	
August	95,625		70,625		157,347		227,972	
September	89,324		68,309		153,623		221,932	
October	95,304		71,259		160,040		231,299	
November	94,235		68,775		155,777		224,552	
December	102,149		71,001		164,405		235,406	
Jan - Apr Total	356,011	415,053	276,956	280,638	644,025	669,097	920,981	949,735
Change from 2000		16.6%		1.3%		3.9%		3.1%
2000 Total	1,120,842		837,899		1,925,877		2,763,776	

1/ Data are subject to revision

2/ Includes pooled milk only. Excludes exempt, non-pool, grade B milk, and bulk milk shipped out-of-California (ranch to plant). Class usage has been adjusted for plant gain and inventory variance.

3/ Includes Other Source Milk.

4/ Includes Other Source Milk.

POOL MILK PRODUCTION

Table 4A - Commercial Production of Grade A milk, Pooled and Non-Pooled, Total Grade B Milk, by Months, in Thousand Pounds, 2000 - 2001 1/

Month	Pool Milk		Grade A Milk Not Pooled 2/		Total Grade A Milk 3/		Total Grade B Milk	
	2000	2001	2000	2001	2000	2001	2000	2001
January	2,602,100	2,670,174	73,286	55,106	2,675,386	2,725,280	30,472	22,849
February	2,462,879	2,456,019	69,264	49,679	2,532,143	2,505,698	23,688	20,092
March	2,629,611	2,724,812	69,716	55,799	2,699,327	2,780,611	37,097	25,908
April	2,621,767	2,705,371	72,790	52,820	2,694,557	2,758,191	34,332	25,370
May	2,683,752		77,138		2,760,890		35,328	
June	2,558,593		73,142		2,631,735		37,581	
July	2,671,225		73,828		2,745,053		36,394	
August	2,578,198		67,322		2,645,520		33,167	
September	2,497,881		65,013		2,562,894		29,938	
October	2,578,336		68,969		2,647,305		31,780	
November	2,492,013		66,449		2,558,462		26,443	
December	2,620,650		52,633		2,673,283		24,802	
Jan-Apr Total	10,316,357	10,556,376	285,056	213,404	10,601,413	10,769,780	125,589	94,219
Change From 2000		2.3%		-25.1%		1.6%		-25.0%
2000 Total	30,997,005		829,550		31,826,555		381,022	

1/ Data are subject to revision.

2/ Includes exempt and milk shipped out-of-state.

3/ Not all milk shipped out of state is reported. These numbers represent lower limits.

NET MILK AVAILABLE IN CALIFORNIA 1/

Table 4B - California Commercial Milk Production, Production Entering, and Production Leaving, Net Milk Available, in Thousand Pounds, by Month, 2000 - 2001 2/

Month	California Milk Production		Production Entering California		Production Leaving California		Net Milk Available in California	
	2000	2001	2000	2001	2000	2001	2000	2001
January	2,705,859	2,748,129	44,719	53,402	22,864	27,785	2,727,714	2,773,746
February	2,555,830	2,525,791	43,404	55,600	21,684	24,958	2,577,550	2,556,433
March	2,736,425	2,806,519	55,333	74,798	21,762	28,526	2,769,996	2,852,791
April	2,728,888	2,783,561	49,642	74,572	25,255	26,189	2,753,275	2,831,944
May	2,796,218		50,151		28,183		2,818,186	
June	2,669,316		48,434		26,439		2,691,311	
July	2,781,447		50,801		24,638		2,807,610	
August	2,678,687		45,049		21,661		2,702,075	
September	2,592,832		43,391		22,033		2,614,190	
October	2,679,084		52,459		24,546		2,706,997	
November	2,584,905		48,853		24,684		2,609,074	
December	2,698,086		49,790		25,438		2,722,438	
Jan-Apr Total	10,727,002	10,864,000	193,098	258,372	91,565	107,458	10,828,535	11,014,914
Change From 2000		1.3%		33.8%		17.4%		1.7%
2000 Total	32,207,577		582,026		289,187		32,500,416	

1/ Data are subject to revision.

2/ Not all milk shipped into or out of the state is reported. These numbers represent lower limits.

CLASS 1 SALES 1/

Table 5 - Sales of Class 1 Market Milk Products in California, by Months, in Thousand Gallons,
May 1999 - Apr 2001 2/

Month	Whole Milk			Reduced-fat			Lowfat/Light Milk		
	1999-2000	2000-2001	% Change	1999-2000	2000-2001	% Change	1999-2000	2000-2001	% Change
May	24,442	24,683	1.0%	19,211	19,321	0.6%	8,319	8,891	6.9%
June	23,981	24,582	2.5%	18,511	18,840	1.8%	7,579	7,952	4.9%
July	25,052	24,570	-1.9%	19,176	18,890	-1.5%	7,588	7,656	0.9%
August	25,773	25,256	-2.0%	19,488	19,212	-1.4%	7,662	8,116	5.9%
September	25,004	25,378	1.5%	19,236	19,569	1.7%	8,759	9,157	4.5%
October	24,300	25,095	3.3%	19,442	19,426	-0.1%	8,715	9,231	5.9%
November	24,081	24,877	3.3%	18,917	18,994	0.4%	8,568	8,627	0.7%
December	25,457	25,530	0.3%	19,579	19,425	-0.8%	8,480	8,357	-1.5%
January	24,553	24,911	1.5%	19,102	19,251	0.8%	8,661	8,504	-1.8%
February	24,003	22,927	-4.5%	18,412	18,017	-2.1%	8,276	8,121	-1.9%
March	25,923	26,223	1.2%	20,077	20,451	1.9%	9,189	9,325	1.5%
April	23,365	23,916	2.4%	18,187	18,517	1.8%	8,015	8,308	3.7%
Jan-Apr Total	97,844	97,977	0.1%	75,778	76,236	0.6%	34,141	34,258	0.3%
May-Apr Total	295,934	297,948	0.7%	229,338	229,913	0.3%	99,811	102,245	2.4%
2000 Total	297,815			229,455			102,128		
Month	Skim/Nonfat/Fat-free Milk			Subtotal Beverage Milks			Half - And - Half		
	1999-2000	2000-2001	% Change	1999-2000	2000-2001	% Change	1999-2000	2000-2001	% Change
May	9,776	9,750	-0.3%	61,748	62,645	1.5%	1,033	1,029	-0.4%
June	8,986	8,941	-0.5%	59,057	60,315	2.1%	1,034	1,049	1.5%
July	8,861	8,161	-7.9%	60,678	59,277	-2.3%	1,043	1,019	-2.3%
August	8,735	8,538	-2.3%	61,657	61,121	-0.9%	1,093	1,079	-1.3%
September	9,590	9,568	-0.2%	62,589	63,672	1.7%	1,105	1,061	-4.0%
October	9,905	9,489	-4.2%	62,362	63,241	1.4%	1,097	1,137	3.6%
November	9,559	9,191	-3.8%	61,126	61,690	0.9%	1,145	1,250	9.2%
December	9,256	8,902	-3.8%	62,772	62,215	-0.9%	1,179	1,201	1.9%
January	9,609	9,348	-2.7%	61,924	62,014	0.1%	1,035	1,098	6.1%
February	9,368	8,539	-8.8%	60,059	57,604	-4.1%	1,041	1,070	2.8%
March	10,139	10,088	-0.5%	65,328	66,088	1.2%	1,113	1,183	6.3%
April	8,883	8,857	-0.3%	58,449	59,598	2.0%	989	1,093	10.5%
Jan-Apr Total	37,999	36,832	-3.1%	245,760	245,304	-0.2%	4,178	4,444	6.4%
May-Apr Total	112,667	109,372	-2.9%	737,749	739,480	0.2%	12,907	13,269	2.8%
2000 Total	110,539			739,936			13,003		
Month	All Other Class 1 Uses 3/			Total Class 1 Milk					
	1999-2000	2000-2001	% Change	1999-2000	2000-2001	% Change			
May	22	21	-4.5%	62,803	63,695	1.4%			
June	21	14	-33.3%	60,112	61,378	2.1%			
July	14	21	50.0%	61,735	60,316	-2.3%			
August	20	26	30.0%	62,771	62,227	-0.9%			
September	21	38	81.0%	63,715	64,772	1.7%			
October	24	22	-8.3%	63,483	64,400	1.4%			
November	21	24	14.3%	62,292	62,964	1.1%			
December	29	12	-58.6%	63,980	63,428	-0.9%			
January	44	12	-72.7%	63,002	63,123	0.2%			
February	18	11	-38.9%	61,118	58,684	-4.0%			
March	21	13	-38.1%	66,461	67,284	1.2%			
April	19	13	-31.6%	59,456	60,704	2.1%			
Jan-Apr Total	102	49	-52.0%	250,037	249,795	-0.1%			
May-Apr Total	274	227	-17.2%	750,928	752,975	0.3%			
2000 Total	280			753,217					

1/ Reported by California plants only.

2/ Data are subject to revision.

3/ Includes sterilized, filled, and extra rich milks.

CLASS 1 SALES, BY MARKETING AREA 1/

Table 6 - Sales of Selected Class 1 Products in California, by Marketing Areas,
April 1999, April 2000 And April 2001 2/

Products and Marketing Areas	Sales			Change To April 2001 From 3/	
	April 1999	April 2000	April 2001	April 1999	April 2000
	Gallons			Percent	
Whole Milk					
N. California	9,314,704	8,797,980	8,730,084	-6.3%	-0.8%
S. California	14,949,402	14,566,837	15,186,092	1.6%	4.3%
State Total	24,264,106	23,364,817	23,916,176	-1.4%	2.4%
Reduced Fat Milk					
N. California	8,225,873	7,632,958	7,624,543	-7.3%	-0.1%
S. California	10,840,598	10,553,615	10,892,629	0.5%	3.2%
State Total	19,066,471	18,186,573	18,517,172	-2.9%	1.8%
Lowfat/Light Milk					
N. California	4,113,019	4,029,680	4,113,686	0.0%	2.1%
S. California	3,930,500	3,985,027	4,193,876	6.7%	5.2%
State Total	8,043,519	8,014,707	8,307,562	3.3%	3.7%
Skim/Nonfat/Fat Free Milk					
N. California	3,961,367	3,620,181	3,531,319	-10.9%	-2.5%
S. California	5,646,681	5,262,717	5,325,850	-5.7%	1.2%
State Total	9,608,048	8,882,898	8,857,169	-7.8%	-0.3%
Beverage Milk Totals					
N. California	25,614,963	24,080,799	23,999,632	-6.3%	-0.3%
S. California	35,367,181	34,368,196	35,598,447	0.7%	3.6%
State Total	60,982,144	58,448,995	59,598,079	-2.3%	2.0%
Half - And - Half					
N. California	563,644	514,034	563,294	-0.1%	9.6%
S. California	520,299	474,539	529,978	1.9%	11.7%
State Total	1,083,943	988,573	1,093,272	0.9%	10.6%

1/ Sales to N. Calif. and/or S. Calif. regions; not necessarily in area of plant.

2/ Data are subject to revision.

3/ Percent change may not agree with those in Table 5 due to rounding.

Table 7 - Manufacture of Selected Class 2 Dairy Products in California,
by Months, in Thousand Pounds (P) or Gallons (G), 2000 - 2001 1/

Month	Cottage Cheese (P)			Lowfat Cottage Cheese (P)			Nonfat Cottage Cheese (P)		
	2000	2001	% Change	2000	2001	% Change	2000	2001	% Change
January	2,820	2,571	-8.8%	4,215	4,364	3.5%	1,149	1,031	-10.3%
February	2,793	2,501	-10.5%	4,401	4,354	-1.1%	1,229	991	-19.4%
March	2,972	2,650	-10.8%	4,634	4,568	-1.4%	1,260	1,132	-10.2%
April	2,708	2,554	-5.7%	4,354	4,431	1.8%	1,171	1,087	-7.2%
May	2,950			4,950			1,259		
June	3,035			4,648			1,186		
July	2,658			4,302			1,040		
August	2,993			4,984			1,267		
September	2,745			4,543			1,127		
October	2,785			4,596			1,132		
November	2,602			4,142			1,057		
December	2,429			3,693			921		
Jan-Apr Total	11,293	10,276	-9.0%	17,604	17,717	0.6%	4,809	4,241	-11.8%
2000 Total	33,490			53,462			13,798		
Month	Total Cottage Cheese (P)			Sour Cream And S. C. Dressing (G)			Other Cream (G)		
	2000	2001	% Change	2000	2001	% Change	2000	2001	% Change
January	8,185	7,967	-2.7%	1,464	1,591	8.7%	1,652	1,690	2.3%
February	8,424	7,848	-6.8%	1,344	1,343	-0.1%	1,731	1,622	-6.3%
March	8,867	8,351	-5.8%	1,526	1,651	8.2%	1,919	1,744	-9.1%
April	8,234	8,074	-1.9%	1,550	1,674	8.0%	1,829	1,709	-6.6%
May	9,160			1,659			1,914		
June	8,871			1,621			1,936		
July	8,001			1,409			1,755		
August	9,246			1,734			1,885		
September	8,416			1,516			1,704		
October	8,514			1,634			1,812		
November	7,802			1,946			2,238		
December	7,044			1,796			1,821		
Jan-Apr Total	33,710	32,240	-4.4%	5,884	6,259	6.4%	7,131	6,765	-5.1%
2000 Total	100,764			19,199			22,196		
Month	Buttermilk (G)			Yogurt (G)					
	2000	2001	% Change	2000	2001	% Change			
January	655	664	1.4%	2,337	2,328	-0.4%			
February	658	551	-16.3%	2,581	2,176	-15.7%			
March	744	724	-2.7%	2,653	2,611	-1.6%			
April	690	689	-0.1%	2,373	2,590	9.1%			
May	695			2,641					
June	698			2,456					
July	674			2,174					
August	728			2,649					
September	657			2,513					
October	711			2,248					
November	708			1,957					
December	717			1,988					
Jan-Apr Total	2,747	2,628	-4.3%	9,944	9,705	-2.4%			
2000 Total	8,335			28,570					

1/ Data are subject to revision.

CLASS 3 PRODUCTION

Table 8 - Manufacture of Selected Class 3 Dairy Products in California,
by Months, in Thousand Gallons, 2000 - 2001 1/

Month	Ice Cream			Ice Milk 2/			Sherbet		
	2000	2001	% Change	2000	2001	% Change	2000	2001	% Change
January	6,256	8,178	30.7%	1,940	2,037	5.0%	479	403	-15.9%
February	9,181	8,838	-3.7%	2,119	2,074	-2.1%	619	516	-16.6%
March	10,735	12,156	13.2%	2,660	2,612	-1.8%	856	686	-19.9%
April	10,882	11,383	4.6%	2,823	2,765	-2.1%	685	610	-10.9%
May	11,988			3,049			713		
June	12,851			3,393			825		
July	11,817			3,007			708		
August	11,844			3,178			818		
September	10,718			2,474			615		
October	8,947			2,382			466		
November	7,219			1,864			259		
December	6,196			1,925			250		
Jan-Apr Total	37,054	40,555	9.4%	9,542	9,488	-0.6%	2,639	2,215	-16.1%
2000 Total	118,634			30,814			7,293		

Month	Frozen Yogurt 3/			Total Frozen Products		
	2000	2001	% Change	2000	2001	% Change
January	291	511	75.6%	8,967	11,130	24.1%
February	402	547	36.1%	12,322	11,977	-2.8%
March	623	645	3.5%	14,876	16,100	8.2%
April	540	669	23.9%	14,932	15,429	3.3%
May	796			16,547		
June	700			17,771		
July	679			16,214		
August	755			16,596		
September	611			14,419		
October	476			12,273		
November	438			9,781		
December	353			8,725		
Jan-Apr Total	1,856	2,372	27.8%	51,097	54,636	6.9%
2000 Total	6,664			163,423		

1/ Data includes soft serve and shake mixes in appropriate categories as defined by butterfat standards. Data are subject to revision.

2/ Includes light dairy dessert and nonfat ice cream.

3/ Includes nonfat and reduced fat yogurts.

CLASS 4A/4B PRODUCTION

Table 9 - Manufacture of Selected Class 4a and Class 4b Products in California, by Months, in Thousand Pounds, 2000 - 2001 1/

Month	Butter			Nonfat Dried Milk, Human Consumption			Condensed Skim, Bulk		
	2000	2001	% Change	2000	2001	% Change	2000	2001	% Change
January	37,961	35,428	-6.7%	64,689	59,172	-8.5%	47,685	44,401	-6.9%
February	34,983	31,915	-8.8%	59,592	54,362	-8.8%	44,484	38,247	-14.0%
March	34,853	30,157	-13.5%	59,338	58,592	-1.3%	47,385	40,891	-13.7%
April	31,272	28,769	-8.0%	62,879	60,317	-4.1%	40,525	39,342	-2.9%
May	30,822			60,637			42,927		
June	23,088			57,497			42,067		
July	22,869			58,796			43,210		
August	23,515			50,380			45,694		
September	27,113			51,972			40,995		
October	29,947			53,916			42,415		
November	30,101			54,458			41,912		
December	33,488			58,800			43,092		
Jan-Apr Total	139,069	126,269	-9.2%	246,498	232,443	-5.7%	180,079	162,881	-9.6%
2000 Total	360,012			692,954			522,391		
Month	Monterey Cheese			Cheddar Cheese			Mozzarella Cheese		
	2000	2001	% Change	2000	2001	% Change	2000	2001	% Change
January	13,057	13,706	5.0%	35,568	44,193	24.2%	59,668	64,743	8.5%
February	13,033	13,503	3.6%	33,128	39,926	20.5%	55,287	57,609	4.2%
March	12,921	14,620	13.1%	36,833	43,658	18.5%	58,665	63,598	8.4%
April	11,759	14,770	25.6%	39,231	44,987	14.7%	60,285	62,036	2.9%
May	12,201			42,396			58,724		
June	13,892			39,656			54,546		
July	15,157			47,117			55,157		
August	12,987			47,658			50,452		
September	13,384			41,143			52,950		
October	15,148			44,409			56,599		
November	16,366			45,105			52,162		
December	13,382			44,833			63,921		
Jan-Apr Total	50,770	56,599	11.5%	144,760	172,764	19.3%	233,905	247,986	6.0%
2000 Total	163,287			497,077			678,416		
Month	Other Italian Cheese 2/			Hispanic Cheese			Total Cheese		
	2000	2001	% Change	2000	2001	% Change	2000	2001	% Change
January	3,876	4,048	4.4%	4,714	5,673	20.3%	120,267	136,093	13.2%
February	2,861	3,159	10.4%	5,102	5,338	4.6%	112,314	124,141	10.5%
March	3,871	4,005	3.5%	5,867	5,986	2.0%	122,658	137,142	11.8%
April	3,880	4,241	9.3%	5,301	5,688	7.3%	124,191	137,338	10.6%
May	3,250			5,531			126,132		
June	3,663			5,459			121,219		
July	3,486			6,047			130,500		
August	3,849			5,805			125,327		
September	4,672			5,500			123,002		
October	4,111			5,474			131,035		
November	4,192			5,182			125,238		
December	3,590			5,270			134,769		
Jan-Apr Total	14,488	15,453	6.7%	20,984	22,685	8.1%	479,430	534,714	11.5%
2000 Total	45,301			65,252			1,496,652		

1/ Data are subject to revision.

2/ Other Italian includes ricotta, provolone, mascarpone and cacavallo cheeses.

AVERAGE PRICE PAID FOR MARKET MILK

Table 10 - Market Bulk Milk and Milk Fat Purchased from Producers, Average Milk Fat Test, Average Solids-Not-Fat and Average Prices Paid Producers in California, by Months, 2000 - 2001 1/

Month	Bulk Milk		Average Milk Fat Test		Average Solids-not-fat		Average Prices Paid Producers 2/	
	2000	2001	2000	2001	2000	2001	2000	2001
	Thousand Pounds		Percent		Percent		Dollars Per Hundredweight	
January	2,675,387	2,725,280	3.78	3.81	8.79	8.83	10.88	12.03
February	2,532,143	2,505,698	3.75	3.77	8.77	8.81	10.71	12.28
March	2,699,327	2,780,611	3.75	3.71	8.76	8.76	10.82	13.04
April	2,694,556	2,758,191	3.64	3.66	8.75	8.75	11.03	13.76
May	2,760,890		3.61		8.73		11.18	
June	2,631,735		3.55		8.69		11.62	
July	2,745,053		3.56		8.69		11.85	
August	2,645,520		3.59		8.69		11.91	
September	2,562,894		3.64		8.74		12.31	
October	2,647,305		3.70		8.79		11.41	
November	2,558,462		3.79		8.84		12.03	
December	2,673,283		3.79		8.82		12.32	

1/ Data are subject to revision.

2/ Prices are F.O.B. plant, at actual test. Includes in-state pool shipments, and California milk shipped into a Federal Milk Marketing Order.

AVERAGE PRICE PAID FOR MANUFACTURING MILK

Table 11 - Manufacturing Bulk Milk and Milk Fat Purchased from Producers, Average Milk Fat Test, Average Solids-Not-Fat and Average Prices Paid Producers in California, by Months, 2000 - 2001 1/

Month	Bulk Milk		Average Milk Fat Test		Average Solids-not-fat		Average Prices Paid Producers 2/	
	2000	2001	2000	2001	2000	2001	2000	2001
	Thousand Pounds		Percent		Percent		Dollars Per Hundredweight	
January	30,472	22,849	4.09	4.15	8.99	8.97	10.80	11.23
February	23,688	20,092	4.10	4.10	8.97	8.96	10.28	11.42
March	37,097	25,908	4.03	3.95	8.94	8.93	10.21	13.12
April	34,332	25,370	3.94	3.91	8.96	8.94	10.43	13.67
May	35,328		3.94		8.97		10.84	
June	37,581		3.86		8.88		10.81	
July	36,394		3.90		8.88		11.49	
August	33,167		3.97		8.88		11.53	
September	29,938		4.04		8.90		12.47	
October	31,780		4.11		8.97		10.25	
November	26,443		4.25		9.02		10.64	
December	24,802		4.22		8.98		11.16	

1/ Data are subject to revision.

2/ Prices are F.O.B. Plant, at actual test.

Class and Pool Prices

Table 12 - Minimum Prices^{1/} for Classes 1, 2, 3, 4a and 4b Market Milk F.O.B. Plant and Pool Prices for Quota, Overbase^{2/} and Blend, March 1999 - June 2001

Month	Year	No. Calif. Class 1	So. Calif. Class 1	No. Calif. Class 2	So. Calif. Class 2	No. Calif. Class 3	So. Calif. Class 3	Statewide Class 4a	Statewide Class 4b	Statewide Quota	Statewide Overbase	Statewide Blend ^{3/}
<i>Dollars per Hundredweight</i>												
March	1999	19.78	20.05	14.20	14.43	14.15	14.15	12.30	11.52	14.86	13.16	13.98
April		13.96	14.24	13.20	13.43	13.15	13.16	11.24	11.48	13.26	11.56	12.31
May		13.96	14.24	13.20	13.43	13.15	13.16	11.55	10.68	13.11	11.41	12.04
June		14.12	14.39	12.13	12.36	12.08	12.09	13.15	11.91	13.85	12.15	12.74
July		14.12	14.39	12.13	12.36	12.08	12.09	12.45	13.96	14.40	12.70	13.23
August		14.61	14.88	13.54	13.77	13.49	13.50	12.74	16.90	16.14	14.44	15.06
September		14.61	14.88	13.54	13.77	13.49	13.50	12.52	15.06	15.32	13.62	14.30
October ^{4/}		19.48	19.75	13.32	13.55	13.27	13.28	11.62	11.66	14.55	12.85	13.63
November ^{5/}		19.48	19.75	13.32	13.55	13.27	13.28	11.42	9.88	13.81	12.11	12.98
December		13.70	13.97	12.21	12.44	12.16	12.17	10.72	9.67	12.16	10.46	11.36
January	2000	11.92	12.19	12.21	12.44	12.16	12.17	10.67	9.58	11.75	10.05	10.89
February		11.69	11.96	11.38	11.62	11.33	11.34	10.74	9.28	11.65	9.95	10.72
March		11.61	11.88	11.38	11.62	11.33	11.34	11.05	9.34	11.73	10.03	10.81
April		12.97	13.25	11.58	11.82	11.54	11.54	11.39	9.27	12.06	10.36	11.02
May		13.50	13.77	11.58	11.82	11.54	11.54	11.94	9.17	12.24	10.54	11.17
June		13.72	13.99	12.36	12.59	12.31	12.32	12.23	9.98	12.78	11.08	11.62
July		14.50	14.77	12.36	12.59	12.31	12.32	11.85	10.64	13.00	11.30	11.84
August		13.93	14.20	12.73	12.96	12.68	12.68	11.86	10.57	13.02	11.32	11.92
September		13.83	14.10	12.73	12.96	12.68	12.68	11.84	11.32	13.31	11.61	12.31
October		13.84	14.11	12.54	12.77	12.49	12.50	11.73	9.01	12.29	10.59	11.41
November		13.76	14.03	12.54	12.77	12.49	12.50	13.36	8.71	12.69	10.99	12.03
December		14.59	14.86	13.23	13.47	13.18	13.19	13.14	9.39	12.98	11.28	12.32
January	2001	16.35	16.62	13.23	13.47	13.18	13.19	11.99	9.22	12.73	11.03	12.04
February		13.80	14.07	13.25	13.48	13.20	13.21	12.56	10.05	13.04	11.34	12.29
March		14.43	14.70	13.25	13.48	13.20	13.21	13.31	11.34	13.88	12.18	13.03
April		15.17	15.44	13.62	13.85	13.57	13.58	14.32	12.12	14.65	12.95	13.76
May		15.92	16.19	13.62	13.85	13.57	13.58	14.77	14.16			
June		16.66	16.94	15.23	15.46	15.18	15.19					

1/ Prices as reported by the Dairy Marketing Branch in the monthly class price letter.

2/ Prices as reported by the Milk Pooling Branch in the monthly pool price letter. Quota price is not reduced by the Regional Quota Adjuster (RQA).

3/ Gross pool value after RQA and Transportation Allowance adjustments divided by the total pounds of pooled production. Price is at actual test, which is generally higher than the 3.5% fat and 8.7% SNF used in all other prices.

4/ Effective October 1, 1999, Milk Producer Security Trust Fund assessments are suspended indefinitely. The Class 1 price for October has been revised to reflect the suspension of the MPSTF assessments.

5/ Effective November 1, 1999, Class 1 milk pricing released on a monthly basis.

POOL PRICE DATA 1/

Table 13 - Statistical Summary of California Milk Pool Data for Selected Months, with Comparisons for the Most Recent Month, April 2000, February 2001, March 2001 and April 2001 2/

Receipts and Usage	2000	2001	2001	2001	Annual
	April	February	March	April	Change 3/
	<i>pounds</i>				<i>percent</i>
Milk Fat					
Receipts: Quota	882,778	882,977	882,616	883,131	0.0%
Base	4,962	5,006	5,037	5,105	2.9%
Overbase	2,288,754	2,420,003	2,370,869	2,414,117	5.5%
Other Source Milk	66,497	75,941	89,676	90,397	35.9%
Daily Average	3,242,991	3,383,927	3,348,198	3,392,750	4.6%
Usage: Class 1	382,604	402,292	395,043	397,490	3.9%
Class 2	158,457	132,058	161,708	180,343	13.8%
Class 3	385,397	283,155	373,731	406,720	5.5%
Class 4a	1,113,277	1,198,208	1,015,418	1,001,102	-10.1%
Class 4b	1,203,255	1,368,213	1,402,297	1,407,094	16.9%
Daily Average	3,242,990	3,383,926	3,348,197	3,392,749	4.6%
Solids-not-fat					
Receipts: Quota	2,152,208	2,152,647	2,151,955	2,153,376	0.1%
Base	10,657	10,229	10,372	10,528	-1.2%
Overbase	5,482,211	5,562,299	5,531,104	5,729,584	4.5%
Other Source Milk	142,812	171,401	208,709	214,844	50.4%
Daily Average	7,787,888	7,896,576	7,902,140	8,108,332	4.1%
Usage: Class 1	1,621,503	1,711,804	1,698,800	1,683,281	3.8%
Class 2	316,527	300,144	318,482	308,730	-2.5%
Class 3	273,691	220,116	248,718	276,677	1.1%
Class 4a	2,471,902	2,218,548	2,168,098	2,258,677	-8.6%
Class 4b	3,104,265	3,445,964	3,468,040	3,580,967	15.4%
Daily Average	7,787,888	7,896,576	7,902,138	8,108,332	4.1%
Class 1 Fluid (Daily Average)	14,919,563	15,752,356	15,722,082	15,626,028	4.7%

Daily Class 1 Use as a Percent of Daily Quota					
	Percent				
Milk Fat	43.3%	45.6%	44.8%	45.0%	1.7%
Solids-not-fat	75.3%	79.5%	78.9%	78.2%	2.8%

Announced Pool Prices, April 2001			
Pooling Category	Milk Component Prices		Standardized Milk 4/ Prices dollars/cwt.
	Fat	Solids-not-fat	
	<i>dollars/pound</i>		
Quota 5/	1.872	0.931	14.65
Base	1.872	0.736	12.95
Overbase	1.872	0.736	12.95

- 1/ Daily totals may not agree due to rounding.
- 2/ Based on handler reports of pool milk receipts and utilization.
- 3/ Percent change from April 2000 to April 2001.
- 4/ Hundredweight prices based on 3.5% fat and 8.7% SNF milk.
- 5/ Quota prices are subject to regional quota adjuster.

Commodity Prices

**Table 14 - Selected Monthly Commodity Prices Used
In the Calculation of California Class 2, 3, 4a, 4b Prices**

January 2000 - May 2001

Month	Chicago Mercantile Exchange			
	Grade AA Butter		Block Cheddar Cheese	
	2000	2001	2000	2001
	<i>Dollars Per Pound</i>			
January	0.9011	1.2109	1.1400	1.0990
February	0.9188	1.3513	1.1089	1.1808
March	0.9935	1.5344	1.1141	1.3095
April	1.0748	1.7725	1.1064	1.3850
May	1.2058	1.8750	1.0945	1.5889
June	1.2744		1.1749	
July	1.1854		1.2425	
August	1.1836		1.2363	
September	1.1806		1.3119	
October	1.1490		1.0789	
November	1.5375		1.0440	
December	1.4854		1.1130	

Month	Commodity Reference Prices ^{2/}		California Manufacturing Plants Nonfat Dry Milk	
	2000	2001	2000	2001
	<i>Dollars Per CWT</i>		<i>Dollars Per Pound</i>	
January	11.39	3/	1.0086	1.0108
February	11.09	3/	1.0083	1.0084
March	12.78	3/	1.0078	1.0061
April	3/	3/	1.0079	1.0074
May	3/	3/	1.0078	1.0094
June	3/	3/	1.0072	
July	3/	3/	1.0070	
August	3/	3/	1.0087	
September	3/	3/	1.0083	
October	3/	3/	1.0107	
November	3/	3/	1.0108	
December	3/	3/	1.0102	

1/ All commodity prices are for the 26th of the prior month to the 25th of the current month.

2/ Commodity Reference Price equals 9.8 times CME Block Cheddar plus 0.27 times CME AA Butter, minus 10 cents.

3/ Effective April 2000, different time periods for commodity prices were established for calculating the commodity reference prices. These new commodity price series are shown in Table 16.

**Table 15 - Selected Weekly Commercial Commodity Prices Used
In the Calculation of California Class Prices
February 17, 2001 - May 18, 2001**

Week	California Manufacturing Plants NFDM	NFDM West ^{1/} Average ^{2/}	Chicago Mercantile Exchange		USDA/NASS		
			Grade AA Butter	Block Cheddar Cheese	Block Cheddar Cheese		
						Other States ^{3/}	MN/WI
<i>Dollars Per Pound</i>							
Feb 17-Feb 23	1.0069	1.0100	1.4663	1.2900	1.1091	1.1969	1.1441
Feb 24-Mar 2	1.0059	1.0100	1.5008	1.3180	1.1569	1.2800	1.1968
Mar 3-March 9	1.0058	1.0100	1.5050	1.2800	1.2016	1.2933	1.2377
Mar 10-Mar 16	1.0072	1.0100	1.5183	1.3120	1.2456	1.2820	1.2578
Mar 17-Mar 23	1.0054	1.0100	1.6133	1.3280	1.2568	1.3222	1.2746
Mar 24 - Mar 30	1.0078	1.0100	1.6692	1.3430	1.2765	1.3307	1.2976
Mar 31 - Apr 6	1.0065	1.0100	1.6833	1.3605	1.3093	1.3436	1.3256
Apr 7 - Apr 13	1.0089	1.0100	1.7063	1.3725	1.3165	1.3682	1.3361
Apr 14 - Apr 20	1.0077	1.0100	1.8700	1.4130	1.3237	1.3832	1.3446
Apr 21 - Apr 27	1.0075	1.0125	1.9275	1.5400	1.3472	1.4127	1.3703
Apr 28 - May 4	1.0091	1.0125	1.8000	1.5800	1.3891	1.4773	1.4199
May 5 - May 11	1.0081	1.0112	1.8500	1.6025	1.4279	1.5237	1.4601
May 12 - May 18	1.0098	1.0112	1.9100	1.6075	1.4859	1.5677	1.5132

1/ California, Idaho, Oregon, and Washington

2/ Simple average of the mostly price as reported by "Dairy Market News"

3/ Representing the largest percentage of other states were the western states of Arizona, California, Idaho, Nevada, Oregon, Utah, and Washington.

Commodity Prices

Table 16 - Selected Monthly Commodity Prices Used in the Calculation of
the California Class 1 Price 1/
April 2000 - May 2001

Month	Chicago Mercantile Exchange			
	Grade AA Butter		Block Cheddar Cheese	
	2000	2001	2000	2001
	<i>Dollars Per Pound</i>			
January		1.1667		1.1050
February		1.3175		1.1236
March		1.5029		1.2990
April	1.0996	1.6800	1.1111	1.3548
May	1.1539	1.8542	1.0982	1.5684
June	1.3404		1.1178	
July	1.2071		1.2580	
August	1.1804		1.1929	
September	1.1805		1.3083	
October	1.1571		1.1216	
November	1.3536		1.0100	
December	1.7750		1.1005	

Month	Commodity Reference Prices 2/		California Manufacturing Plants Nonfat Dry Milk	
	2000	2001	2000	2001
	<i>Dollars Per CWT</i>		<i>Dollars Per Pound</i>	
	January		13.6087	
February		14.2361		1.0104
March		14.9803		1.0064
April	11.1587	15.7302	1.0087	1.0071
May	13.5266	16.4721	1.0078	1.0083
June	14.3107		1.0079	
July	13.7397		1.0066	
August	13.6370		1.0077	
September	13.6478		1.0089	
October	13.5684		1.0111	
November	14.3937		1.0111	
December	16.1584		1.0105	

- 1/ All commodity prices are for the 26th of the prior month to the 10th of the current month, except the California NFDM price is a weighted average of the two weekly prices available as of the 10th of the month. See Table 15 for weekly NFDM prices.
- 2/ Commodity Reference Price equals the higher of either (a) 9.8 times CME Block Cheddar plus 0.27 times CME AA Butter, minus 10 cents, or (b) 4.2 times CME AA Butter plus 8.613 times California Nonfat Dry Milk.

Production Costs

Table 17 - Milk Production Cost Index for California, by Month
January 2000 - December 2001

Month	Del Norte / Humboldt		North Bay		North Valley		South Valley		Southern California		Statewide Weighted Average	
	2000	2001	2000	2001	2000	2001	2000	2001	2000	2001	2000	2001
	<i>Dollars per Hundredweight</i>											
January	14.93	14.68	12.33	13.66	12.05	12.60	11.89	12.09	12.14	13.04	12.0350	12.5165
February	14.93	14.68	12.33	13.66	12.05	12.60	11.89	12.09	12.14	13.04	12.0350	12.5165
March	12.45		12.07		11.88		11.78		12.41		11.9597	
April	12.45		12.07		11.88		11.78		12.41		11.9597	
May	11.13		12.40		12.14		12.07		12.78		12.2443	
June	11.13		12.40		12.14		12.07		12.78		12.2443	
July	11.45		12.76		12.38		12.55		13.21		12.6254	
August	11.45		12.76		12.38		12.55		13.21		12.6254	
September	12.27		13.10		12.57		12.48		13.20		12.6780	
October	12.27		13.10		12.57		12.48		13.20		12.6780	
November	13.29		13.29		12.55		12.21		12.92		12.5172	
December	13.29		13.29		12.55		12.21		12.92		12.5172	

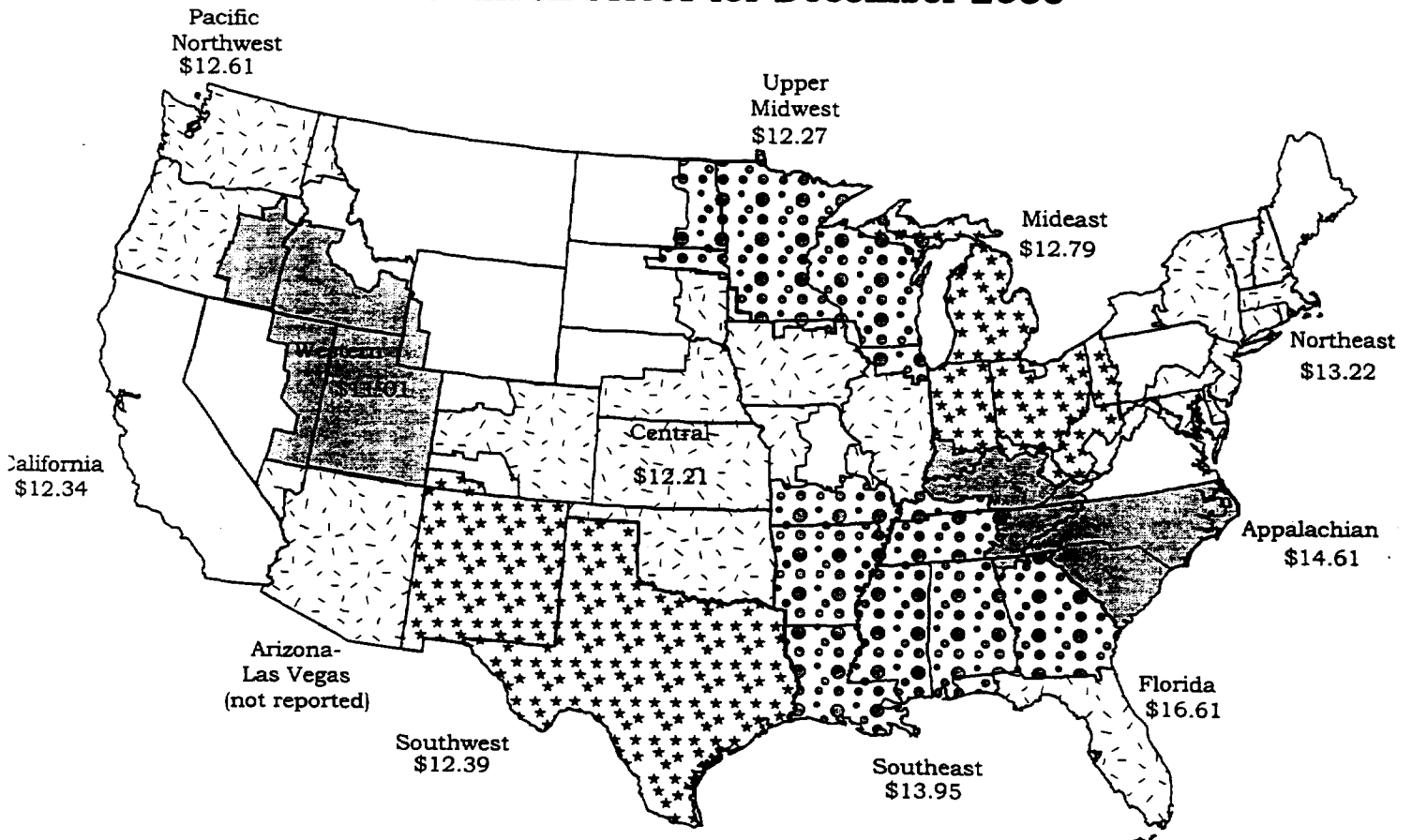
2000-2001 Mailbox Prices in Dollars per Hundredweight

	<u>September</u>	<u>October</u>	<u>November</u>	<u>December</u>	<u>January</u>	<u>February</u>
California ¹	\$12.30	\$11.47	\$12.13	\$12.34	\$12.01	\$12.23
USDA ²	\$12.68	\$12.44	\$12.40	\$12.92	-----	-----

¹California mailbox price calculated by CDFA.

²All federal milk market order weighted average, as calculated by USDA.

Mailbox Prices for December 2000



Average Retail Prices

Table 18 - Comparison of Class 1 "Farm" and "Average Retail" Prices for Selected Markets
February 1999 through June 2001

Month	Year	Class 1 Farm Price 1/	Class I Farm Price 1/				Average Whole Milk Retail Price Collected by AC Nielson 2/				
		Southern California	Phoenix	Salt Lake City	Boise	Denver	Los Angeles	San Diego	Salt Lake City/ Boise	Phoenix	Denver
Dollars Per Gallon											
February	1999	1.72	1.71	1.65	1.62	1.73	3.21	3.28	2.85	2.48	3.37
March		1.72	1.62	1.56	1.53	1.64	3.29	3.33	2.79	2.36	3.27
April		1.22	1.11	1.05	1.01	1.12	3.08	3.01	2.68	2.27	3.03
May		1.22	1.23	1.18	1.13	1.24	2.74	2.69	2.64	2.32	2.82
June		1.24	1.24	1.19	1.14	1.25	2.72	2.69	2.62	2.34	3.02
July		1.24	1.19	1.14	1.10	1.21	2.74	2.77	2.62	2.27	2.72
August		1.28	1.21	1.15	1.11	1.22	2.77	2.78	2.60	2.29	2.90
September		1.28	1.39	1.33	1.30	1.41	2.75	2.71	2.68	2.29	3.06
October		1.70	1.59	1.53	1.49	1.60	3.15	3.11	2.80	2.60	3.28
November		1.70	1.63	1.57	1.53	1.64	3.29	3.20	2.84	2.81	3.28
December		1.20	1.16	1.16	1.12	1.23	3.04	3.00	2.82	2.88	3.28
January	2000	1.05	1.14	1.10	1.08	1.16	2.78	2.77	2.80	2.76	3.34
February		1.03	1.12	1.08	1.06	1.14	2.69	2.74	2.79	2.79	3.15
March		1.02	1.13	1.10	1.07	1.15	2.63	2.63	2.71	2.48	3.17
April		1.14	1.14	1.10	1.08	1.16	2.69	2.72	2.71	2.49	2.96
May		1.18	1.19	1.15	1.12	1.20	2.69	2.68	2.64	2.60	2.71
June		1.20	1.21	1.17	1.14	1.23	2.71	2.70	2.77	2.59	2.71
July		1.27	1.27	1.23	1.21	1.29	2.75	2.72	2.81	2.58	2.71
August		1.22	1.23	1.19	1.17	1.25	2.75	2.68	2.82	2.28	2.64
September		1.21	1.22	1.18	1.16	1.24	2.72	2.64	2.77	2.37	2.60
October		1.21	1.22	1.19	1.16	1.24	2.76	2.68	2.76	2.51	2.54
November		1.21	1.22	1.18	1.15	1.24	2.76	2.69	2.72	2.44	2.75
December		1.28	1.25	1.21	1.18	1.26	2.83	2.73	2.70	2.43	2.68
January	2001	1.43	1.41	1.37	1.34	1.42	3.01	2.89	2.80	2.45	2.84
February		1.21	1.23	1.19	1.16	1.25	3.00	2.88	2.80	2.35	2.67
March		1.26	1.29	1.25	1.23	1.31	2.93	2.80	2.50	2.49	2.67
April		1.33	1.36	1.32	1.29	1.38	3.00	2.91	2.47	2.43	2.71
May 3/		1.39	1.42	1.39	1.36	1.44	3.05	2.94	2.62	2.33	2.44
June		1.46	1.49	1.45	1.43	1.51					

Month	Year	Class 1 Farm Price 1/	Class I Farm Price 1/				Average Whole Milk Retail Price Collected by AC Nielson 2/				
		Northern California	Salt Lake City	Boise		Pacific Northwest	Sacramento	San Francisco	Salt Lake City/ Boise	Portland	Seattle
Dollars Per Gallon											
February	1999	1.70	1.65	1.62		1.65	3.02	3.16	2.85	2.75	3.44
March		1.70	1.56	1.53		1.56	2.99	2.98	2.79	3.04	3.20
April		1.20	1.05	1.01		1.05	2.56	2.55	2.68	2.82	3.29
May		1.20	1.18	1.13		1.18	2.41	2.39	2.64	2.76	3.09
June		1.22	1.19	1.14		1.19	2.48	2.52	2.62	2.91	3.10
July		1.22	1.14	1.10		1.14	2.56	2.60	2.62	2.48	3.20
August		1.26	1.15	1.11		1.15	2.61	2.64	2.60	3.03	3.14
September		1.26	1.33	1.30		1.33	2.58	2.54	2.68	2.59	3.33
October		1.68	1.53	1.49		1.53	2.99	3.03	2.80	2.82	3.14
November		1.68	1.57	1.53		1.57	3.05	3.11	2.84	3.17	3.36
December		1.18	1.16	1.12		1.16	2.64	2.69	2.82	2.55	3.30
January	2000	1.03	1.10	1.08		1.10	2.32	2.39	2.80	2.77	3.21
February		1.01	1.08	1.06		1.08	2.29	2.35	2.79	2.92	3.30
March		1.00	1.10	1.07		1.10	2.28	2.34	2.71	2.85	3.31
April		1.12	1.10	1.08		1.10	2.35	2.42	2.71	2.20	3.15
May		1.16	1.15	1.12		1.15	2.40	2.41	2.64	2.56	3.23
June		1.18	1.17	1.14		1.17	2.46	2.54	2.77	2.92	3.33
July		1.25	1.23	1.21		1.23	2.50	2.54	2.81	2.54	3.32
August		1.20	1.19	1.17		1.19	2.47	2.49	2.82	2.77	3.39
September		1.19	1.18	1.16		1.18	2.47	2.47	2.77	2.75	3.27
October		1.19	1.19	1.16		1.19	2.46	2.44	2.76	2.80	3.29
November		1.18	1.18	1.15		1.18	2.48	2.53	2.72	3.22	2.80
December		1.25	1.21	1.18		1.21	2.58	2.63	2.70	2.76	3.35
January	2001	1.41	1.37	1.34		1.37	2.71	2.71	2.80	2.85	3.31
February		1.19	1.19	1.16		1.19	2.54	2.63	2.80	2.67	3.39
March		1.24	1.25	1.23		1.25	2.60	2.60	2.50	2.72	3.45
April		1.30	1.32	1.29		1.32	2.73	2.74	2.47	2.74	3.51
May 3/		1.37	1.39	1.36		1.39	2.73	2.63	2.62	2.39	3.45
June		1.43	1.45	1.43		1.45					

1/ Class 1 and Class 1 prices depicted are minimum producer f.o.b. plant prices. They do not include either haul, deductions, or any over-order charges such as quality bonuses, service charges, premiums, etc.

2/ The Department has contracted with AC Nielson to provide the retail price survey data on a monthly basis. Data subject to revision.

3/ May data as reported by AC Nielson for the week ending 5/05/01.

Source: Dairy Marketing Class 1 Price Letter - Selected Issues; AC Nielson Scantrack Reports on Refrigerated Milk; Dairy Market News

MINIMUM PRICES CLASS 1, 2, 3, 4A, 4B MARKET MILK (F.O.B. PROCESSING PLANT)

▶ CLASS 1 For June 2001

	LB. FAT	LB. SNF	LB. FLUID	EQUIVALENT PER CWT.
Northern California	\$2.1050	\$0.8359	\$0.0231	\$16.66
Southern California	\$2.1050	\$0.8359	\$0.0262	\$16.94
Statewide Average CWT Price:				
Based Upon Production				\$16.72
Based Upon Utilization				\$16.80

COMMODITY MARKET PRICES

	\$ Per Lb
Chicago Mercantile Exchange Grade AA Butter – Daily Simple Average (Mar. 26 – April 10)	\$1.8542
Chicago Mercantile Exchange Block Cheddar Cheese – Daily Simple Average (Mar. 26 – April 10)	\$1.5684
California Extra Grade & Grade A Nonfat Dry Milk (for weeks ending March 30 and April 6)	\$1.0083
COMMODITY REFERENCE PRICE FOR FEBRUARY CLASS 1 PRICING:	\$16.472

July 2001 Class 1 price will be announced no later than 4:00 p.m. on June 11, 2001.

▶ CLASS 2 June and July, 2001

	LB. FAT	LB. SNF	EQUIVALENT PER CWT.
Northern California	\$2.0551	\$0.9240	\$15.23
Southern California	\$2.0574	\$0.9498	\$15.46

▶ CLASS 3 April and May, 2001

	LB. FAT	LB. SNF	EQUIVALENT PER CWT.
Northern California	\$2.0551	\$0.9183	\$15.18
Southern California	\$2.0574	\$0.9183	\$15.19

COMMODITY MARKET PRICES

	\$ Per Lb.
Chicago Mercantile Exchange Grade AA Butter – Daily Simple Average (Feb. 26 – Mar. 25)	\$1.8750
Chicago Mercantile Exchange Block Cheddar Cheese – Daily Simple Average (Feb. 26 – Mar. 25)	\$1.5889
California Extra Grade & Grade A Nonfat Dry Milk – Monthly Weighted Average (Feb. 26 – Mar. 25)	\$1.0094

August and September Class 2 and 3 prices will be issued no later than 4:00 p.m. on August 1, 2001.

▶ CLASS 4a May 2001

	LB. FAT	LB. SNF	EQUIVALENT PER CWT.
Statewide	\$2.0796	\$0.8607	\$14.77

▶ CLASS 4b May 2001

	LB. FAT	LB. SNF	EQUIVALENT PER CWT.
Statewide	\$2.0796	\$0.7906	\$14.16

COMMODITY MARKET PRICES

	\$ Per Lb.
Chicago Mercantile Exchange Grade AA Butter – Daily Simple Average (Mar. 26 – Apr. 25)	\$1.8750
Chicago Mercantile Exchange Block Cheddar Cheese – Daily Simple Average (Mar. 26 – Apr. 25)	\$1.5889
California Extra Grade & Grade A Nonfat Dry Milk – Monthly Weighted Average (Mar. 26 – Apr. 25)	\$1.0094

June 2001 Class 4a and 4b prices will be issued no later than 4:00 p.m. on July 2, 2001.

Table 19 - Retail Price Data

	Sacramento		San Francisco		Los Angeles		San Diego	
	Low-High	Average	Low-High	Average	Low-High	Average	Low-High	Average
Dollars per Gallon								
Whole Milk								
June 2000	2.37-3.28	2.46	2.47-3.47	2.54	2.40-4.20	2.71	2.34-3.96	2.70
July	2.33-3.64	2.50	2.36-3.50	2.54	2.36-4.18	2.75	2.34-4.07	2.72
August	2.34-3.53	2.47	2.26-3.50	2.49	2.49-4.23	2.75	2.43-4.04	2.68
September	2.35-3.46	2.47	2.27-3.50	2.47	2.38-4.25	2.72	2.43-4.00	2.64
October	2.32-3.21	2.46	2.26-3.59	2.44	2.38-4.22	2.76	2.43-4.00	2.68
November	2.34-3.44	2.48	2.31-3.59	2.53	2.49-4.18	2.76	2.39-4.03	2.69
December	2.41-3.33	2.58	2.38-3.79	2.63	2.45-4.22	2.83	2.43-4.11	2.73
January 2001	2.54-3.45	2.71	2.53-3.79	2.71	2.45-4.18	3.01	2.75-4.30	2.89
February	2.36-3.45	2.54	2.32-3.81	2.63	2.49-3.91	3.00	2.43-4.23	2.88
March	2.43-3.45	2.60	2.39-3.80	2.60	2.45-3.90	2.93	2.46-4.08	2.80
April	2.55-3.45	2.73	2.54-3.89	2.74	2.49-3.94	3.00	2.78-4.09	2.91
May 1/	2.61-3.45	2.73	2.54-3.99	2.63	2.50-3.93	3.05	2.87-4.13	2.94
2% Lowfat Milk								
June 2000	2.27-3.27	2.42	2.38-3.55	2.48	2.27-4.10	2.66	2.20-3.96	2.62
July	2.29-3.53	2.48	2.30-3.59	2.50	2.33-4.14	2.68	2.29-4.04	2.63
August	2.32-3.53	2.45	2.35-3.59	2.49	2.27-4.19	2.69	2.29-4.02	2.61
September	2.25-3.42	2.42	2.18-3.59	2.45	2.53-4.21	2.64	2.29-4.03	2.57
October	2.23-3.21	2.40	2.17-3.59	2.37	2.46-4.20	2.64	2.29-4.02	2.57
November	2.29-3.49	2.44	2.40-3.59	2.54	2.46-4.19	2.65	2.29-4.02	2.58
December	2.31-3.48	2.52	2.31-3.79	2.55	2.47-4.19	2.72	2.29-4.09	2.52
January 2001	2.37-3.44	2.59	2.32-3.79	2.56	2.49-4.19	2.82	2.36-4.29	2.60
February	2.24-3.39	2.45	2.32-3.79	2.56	2.51-4.17	2.80	2.36-4.21	2.60
March	2.24-3.39	2.52	2.23-3.79	2.52	2.44-4.14	2.72	2.36-4.11	2.54
April	2.36-3.35	2.59	2.29-3.89	2.58	2.53-4.14	2.80	2.36-4.11	2.63
May 1/	2.53-3.35	2.65	2.55-3.99	2.65	2.64-4.09	2.84	2.36-4.11	2.72
1% Lowfat Milk								
June 2000	2.39-3.21	2.56	2.77-3.55	2.91	2.31-4.24	2.82	2.70-3.93	2.75
July	2.44-3.27	2.64	2.60-3.59	2.50	2.29-4.26	2.84	2.28-3.96	2.76
August	2.49-3.64	2.62	2.72-3.59	2.91	2.79-4.16	2.83	2.69-3.93	2.73
September	2.48-3.30	2.59	2.82-3.59	2.94	2.60-4.19	2.76	2.54-3.88	2.67
October	2.36-3.22	2.54	2.39-3.59	2.82	2.76-4.17	2.80	2.65-3.87	2.70
November	2.44-3.23	2.58	2.74-3.59	2.90	2.70-4.19	2.81	2.64-3.96	2.70
December	2.41-3.34	2.61	2.46-3.79	2.90	2.82-4.21	2.90	2.70-4.04	2.75
January 2001	2.57-3.50	2.73	2.87-3.79	3.06	2.94-4.19	2.99	2.78-4.31	2.83
February	2.53-3.50	2.58	2.91-3.79	3.05	2.85-4.18	2.94	2.72-4.21	2.79
March	2.46-3.47	2.61	2.49-3.80	2.97	2.79-4.18	2.90	2.69-3.96	2.76
April	2.56-3.45	2.72	2.85-3.89	3.13	2.79-4.17	2.91	2.37-4.02	2.80
May 1/	2.69-3.36	2.73	3.01-3.98	3.12	2.79-4.09	2.95	2.40-3.97	2.84
Nonfat Milk								
June 2000	2.10-3.09	2.24	2.24-3.32	2.34	2.44-3.98	2.86	2.14-3.68	2.65
July	2.13-3.09	2.28	2.17-3.31	2.34	2.50-4.01	2.78	2.07-3.75	2.68
August	2.15-3.45	2.27	2.20-3.32	2.33	2.49-4.05	2.74	2.07-3.72	2.66
September	2.07-3.17	2.21	1.93-3.32	2.28	2.49-4.06	2.70	2.53-3.71	2.64
October	2.03-3.09	2.21	2.02-3.32	2.30	2.47-4.03	2.70	2.07-3.77	2.63
November	2.02-3.09	2.23	2.01-3.34	2.32	2.47-4.05	2.76	2.14-3.94	2.66
December	2.04-3.27	2.27	2.05-3.35	2.32	2.76-4.04	2.82	2.14-4.02	2.68
January 2001	2.11-3.11	2.28	2.26-3.39	2.38	2.84-4.04	2.87	2.71-4.22	2.74
February	2.11-3.11	2.25	2.25-3.39	2.37	2.74-3.99	2.84	2.14-4.08	2.72
March	2.11-3.16	2.28	2.06-3.40	2.34	2.59-3.94	2.72	2.14-3.98	2.64
April	2.16-3.16	2.34	2.24-3.49	2.39	2.59-3.96	2.69	2.44-3.97	2.62
May 1/	2.21-3.14	2.33	2.28-3.49	2.39	2.47-3.91	2.71	2.63-3.83	2.69

Source: AC Nielsen Scantrack © Reports on Refrigerated Milk. The low and the high price in this chart does not represent the lowest or the highest observed price, but rather weighted averages for specific brands of milk within the specified market. Data subject to revision.

1/ May data as reported by AC Nielsen for the week ending 5/05/01.

Table 19 - Retail Price Data

	Seattle		Portland		Salt Lake City/Boise		Phoenix		Denver	
	Low-High	Average	Low-High	Average	Low-High	Average	Low-High	Average	Low-High	Average
Dollars per Gallon										
Whole Milk										
June 2000	3.16-3.63	3.33	1.29-3.32	2.92	2.49-3.06	2.77	1.89-2.84	2.59	2.23-3.82	2.71
July	2.61-3.64	3.32	0.88-3.69	2.54	2.49-3.30	2.61	1.89-3.90	2.58	2.34-3.83	2.71
August	2.63-3.69	3.39	0.89-3.69	2.77	2.69-3.30	2.82	1.89-3.94	2.28	2.30-3.80	2.64
September	2.43-3.69	3.27	0.83-3.69	2.75	2.32-3.29	2.77	1.89-3.92	2.37	2.17-3.83	2.60
October	1.97-3.69	3.29	1.39-3.69	2.80	2.68-3.30	2.76	1.79-3.92	2.51	2.22-3.86	2.54
November	2.30-3.98	2.80	1.39-3.69	3.22	2.49-3.31	2.72	1.79-3.08	2.44	2.49-3.82	2.75
December	3.02-3.99	3.35	0.99-3.62	2.76	2.21-3.34	2.70	1.79-3.08	2.43	2.49-3.80	2.68
January 2001	2.65-3.99	3.31	1.50-3.65	2.85	2.00-3.46	2.80	1.79-2.99	2.45	2.60-3.84	2.84
February	2.81-3.64	3.39	1.50-3.59	2.67	2.64-3.46	2.80	1.85-3.27	2.35	2.20-3.84	2.67
March	2.58-3.98	3.45	1.47-3.52	2.72	1.67-3.33	2.50	1.92-3.28	2.49	2.23-3.78	2.67
April	1.78-3.97	3.51	0.99-3.50	2.74	1.67-3.36	2.47	1.93-3.39	2.43	2.46-3.80	2.71
May 1/	3.39-3.97	3.45	2.29-3.48	2.39	1.68-3.46	2.62	1.92-3.39	2.33	2.27-3.75	2.44
2% Lowfat Milk										
June 2000	2.09-3.49	2.63	1.29-3.17	2.59	1.95-2.92	2.29	1.71-2.64	2.29	2.15-3.73	2.63
July	2.51-3.49	2.85	0.88-3.22	2.36	1.89-3.19	2.44	1.89-3.90	2.41	2.34-3.76	2.64
August	1.50-3.54	2.83	0.89-3.22	2.64	2.11-3.21	2.47	1.56-3.88	2.15	2.26-3.84	2.58
September	1.97-3.49	2.79	0.80-3.23	2.58	1.67-3.21	2.35	1.62-3.94	2.16	2.15-3.79	2.53
October	2.11-3.59	2.83	1.39-3.23	2.67	1.67-3.20	2.31	1.56-3.89	2.11	2.16-3.87	2.46
November	2.10-3.87	2.38	1.39-3.28	2.81	1.81-3.19	2.31	1.66-2.97	2.09	2.42-3.88	2.62
December	2.21-3.88	2.69	0.99-3.21	2.47	1.95-3.26	2.37	1.76-2.91	2.14	2.25-3.90	2.58
January 2001	2.42-3.89	2.79	1.50-3.33	2.46	1.88-3.35	2.41	1.79-2.96	2.39	2.54-3.73	2.75
February	2.56-3.50	2.95	1.50-3.35	2.26	2.00-3.35	2.44	1.85-3.06	2.25	1.69-3.67	2.58
March	2.45-3.85	2.81	1.38-3.33	2.34	2.00-3.26	2.40	1.85-2.80	2.24	1.73-3.65	2.60
April	1.74-3.83	2.74	0.91-3.20	2.36	1.99-3.30	2.37	1.86-3.39	2.25	2.37-3.64	2.65
May 1/	2.52-3.92	2.64	1.40-3.21	1.88	2.00-3.35	2.45	1.82-3.39	1.94	2.03-3.64	2.45
1% Lowfat Milk										
June 2000	2.23-3.99	2.68	1.29-3.15	2.52	1.50-3.19	2.27	1.88-2.69	2.35	2.17-3.49	2.53
July	2.50-3.99	2.93	0.88-3.14	2.32	1.80-3.45	2.33	1.89-2.88	2.45	2.29-3.49	2.54
August	1.50-3.99	2.86	0.89-3.09	2.58	1.89-3.47	2.33	1.52-2.73	2.07	2.25-3.50	2.47
September	1.74-3.99	2.82	0.80-3.09	2.50	1.75-3.47	2.31	1.67-2.91	2.14	2.14-3.50	2.47
October	2.00-3.99	2.93	1.39-3.08	2.61	1.68-3.45	2.26	1.60-2.93	2.16	2.12-3.49	2.41
November	1.76-3.99	2.46	1.39-3.08	2.73	1.76-3.46	2.25	1.63-2.98	2.10	2.36-3.20	2.55
December	1.67-3.99	2.76	0.99-3.09	2.37	1.83-3.47	2.26	1.77-2.92	2.14	2.41-3.27	2.51
January 2001	2.44-4.00	2.75	1.50-3.18	2.38	2.02-3.45	2.29	1.79-2.95	2.38	2.49-3.31	2.69
February	2.70-3.99	2.97	1.50-3.23	2.17	1.66-3.27	2.25	1.80-3.00	2.28	1.45-3.50	2.48
March	1.98-3.99	2.85	1.33-3.21	2.26	1.66-3.27	2.09	1.80-3.04	2.25	1.87-3.49	2.49
April	1.73-3.99	2.78	0.86-3.12	2.30	1.67-3.09	2.12	1.80-3.00	2.22	2.04-3.50	2.57
May 1/	2.59-3.99	2.72	1.33-3.11	1.75	2.15-3.20	2.35	1.79-2.72	1.93	1.83-3.49	2.29
Nonfat Milk										
June 2000	2.61-3.72	2.79	1.29-3.07	2.50	1.99-2.82	2.49	1.89-2.79	2.52	2.17-3.66	2.51
July	2.53-3.53	2.87	0.88-3.07	2.33	1.88-3.39	2.57	1.89-2.88	2.58	1.83-3.74	2.53
August	1.58-3.51	2.79	0.89-3.02	2.54	2.24-3.40	2.58	1.79-3.00	2.19	2.27-3.68	2.42
September	2.30-3.65	2.91	0.80-3.02	2.53	2.05-3.39	2.50	1.89-3.00	2.29	2.10-3.65	2.49
October	2.08-3.53	3.00	1.39-3.03	2.55	2.25-3.39	2.54	1.79-2.94	2.36	2.15-3.68	2.42
November	2.07-3.88	2.42	1.39-3.03	2.74	1.99-3.41	2.50	1.79-3.01	2.26	2.38-3.73	2.70
December	2.24-3.89	2.90	0.99-3.03	2.31	1.65-3.40	2.44	1.79-3.03	2.43	2.40-3.69	2.61
January 2001	1.00-3.89	2.55	1.50-3.13	2.43	1.99-3.40	2.54	1.79-2.99	2.54	2.55-3.30	2.74
February	2.60-3.51	2.99	1.50-3.16	2.13	0.72-3.40	2.54	1.80-3.00	2.34	2.04-3.64	2.54
March	2.59-3.80	2.97	1.28-3.14	2.33	1.67-3.40	2.36	1.80-3.10	2.43	1.46-3.60	2.36
April	1.77-3.78	2.85	0.84-3.01	2.27	1.67-3.38	2.30	1.80-2.98	2.30	1.46-3.60	2.64
May 1/	3.11-3.85	3.18	1.66-2.96	1.77	1.67-3.09	2.35	1.81-2.71	2.00	1.34-3.46	2.15

Source: AC Nielsen Scantrack © Reports on Refrigerated Milk. The low and the high price in this chart does not represent the lowest or the highest observed price, but rather weighted averages for specific brands of milk within the specified market. Data subject to revision.

1/ May data as reported by AC Nielsen for the week ending 5/05/01.

July 2001

Dairy Information Release Dates and Events

Sunday	Monday	Tuesday	Wednesday	Thursday	Friday	Saturday																																																																																																		
1	2 June 4a/4b Prices Department Hearing	3	4 Weekly NFDM	5	6 Dairy Information Bulletin	7																																																																																																		
8	9 California Dairy Review Newsletter	10 Milk Pricing Newsletter August Class 1 Prices	11 Weekly NFDM	12	13	14																																																																																																		
15	16	17	18 Weekly NFDM	19	20	21																																																																																																		
22	23	24 June Quota, Base, Overbase Prices	25 Weekly NFDM Consumer Milk Price Survey	26	27	28																																																																																																		
29	30	31	<table border="1"> <thead> <tr> <th colspan="7">Jun 2001</th> <th colspan="7">Aug 2001</th> </tr> <tr> <th>S</th><th>M</th><th>T</th><th>W</th><th>T</th><th>F</th><th>S</th> <th>S</th><th>M</th><th>T</th><th>W</th><th>T</th><th>F</th><th>S</th> </tr> </thead> <tbody> <tr> <td></td><td></td><td></td><td></td><td></td><td>1</td><td>2</td> <td></td><td></td><td></td><td></td><td>1</td><td>2</td><td>3</td><td>4</td> </tr> <tr> <td>3</td><td>4</td><td>5</td><td>6</td><td>7</td><td>8</td><td>9</td> <td>5</td><td>6</td><td>7</td><td>8</td><td>9</td><td>10</td><td>11</td> </tr> <tr> <td>10</td><td>11</td><td>12</td><td>13</td><td>14</td><td>15</td><td>16</td> <td>12</td><td>13</td><td>14</td><td>15</td><td>16</td><td>17</td><td>18</td> </tr> <tr> <td>17</td><td>18</td><td>19</td><td>20</td><td>21</td><td>22</td><td>23</td> <td>19</td><td>20</td><td>21</td><td>22</td><td>23</td><td>24</td><td>25</td> </tr> <tr> <td>24</td><td>25</td><td>26</td><td>27</td><td>28</td><td>29</td><td>30</td> <td>26</td><td>27</td><td>28</td><td>29</td><td>30</td><td>31</td> </tr> </tbody> </table>				Jun 2001							Aug 2001							S	M	T	W	T	F	S	S	M	T	W	T	F	S						1	2					1	2	3	4	3	4	5	6	7	8	9	5	6	7	8	9	10	11	10	11	12	13	14	15	16	12	13	14	15	16	17	18	17	18	19	20	21	22	23	19	20	21	22	23	24	25	24	25	26	27	28	29	30	26	27	28	29	30	31
Jun 2001							Aug 2001																																																																																																	
S	M	T	W	T	F	S	S	M	T	W	T	F	S																																																																																											
					1	2					1	2	3	4																																																																																										
3	4	5	6	7	8	9	5	6	7	8	9	10	11																																																																																											
10	11	12	13	14	15	16	12	13	14	15	16	17	18																																																																																											
17	18	19	20	21	22	23	19	20	21	22	23	24	25																																																																																											
24	25	26	27	28	29	30	26	27	28	29	30	31																																																																																												



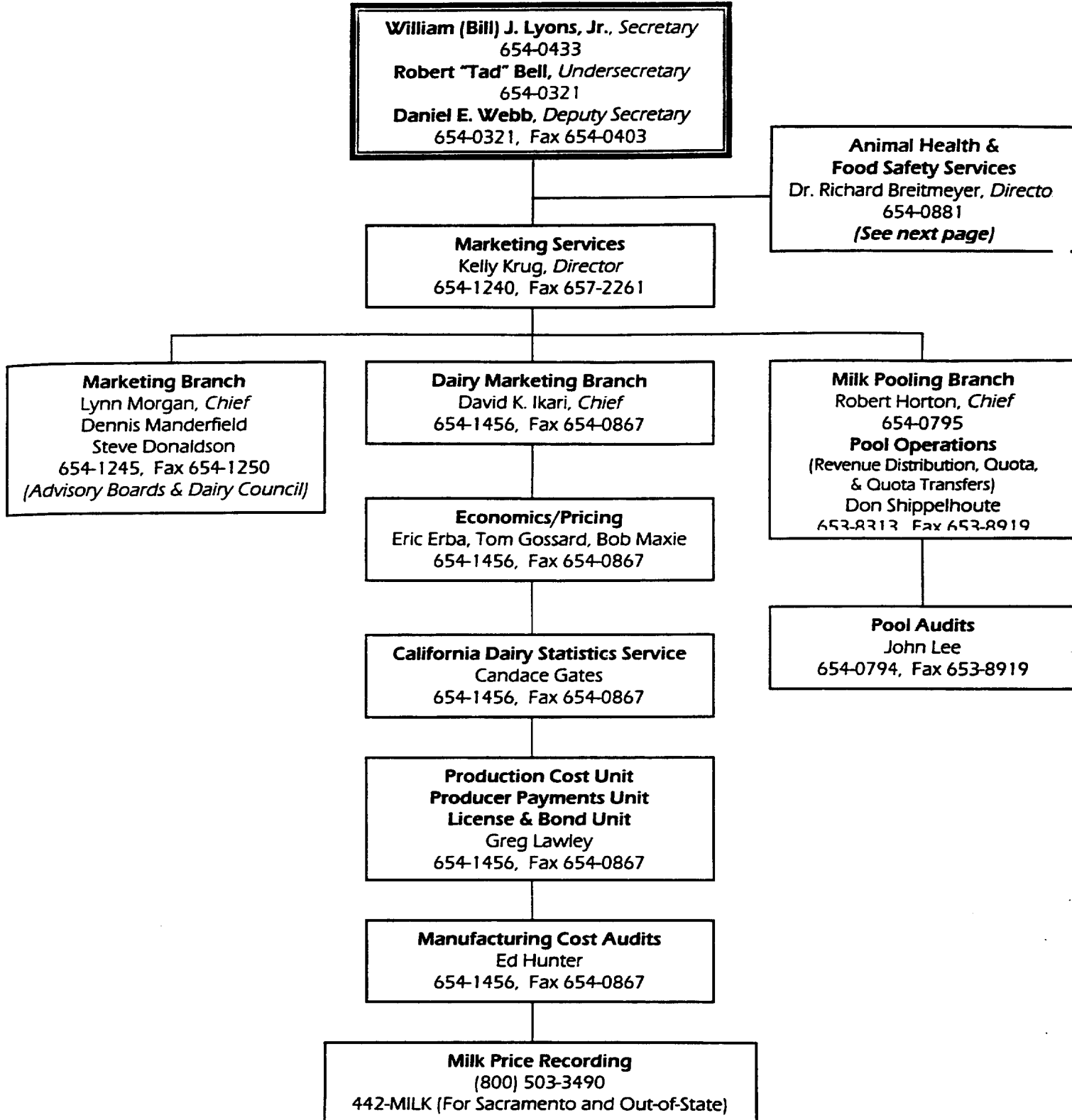
Key Contacts for Department Dairy Services

California Department of Food and Agriculture

1220 N Street, Sacramento, CA 95814

Homepage website: <http://cdfa.ca.gov/dairy>

Email address: dairy@cdfa.gov



Area Code is (916) unless otherwise noted.



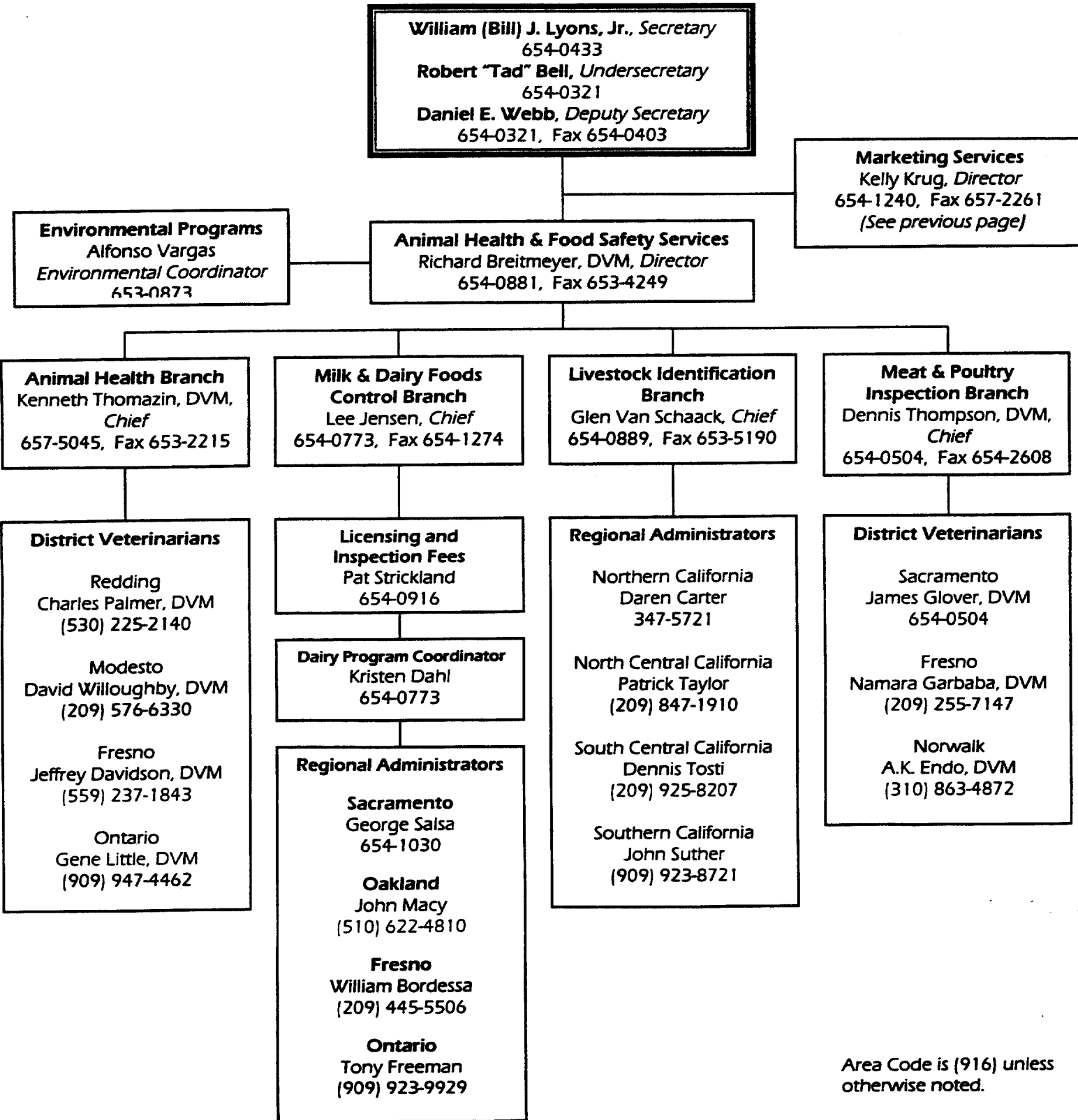
Key Contacts for Department Dairy Services

California Department of Food and Agriculture

1220 N Street, Sacramento, CA 95814

Homepage website: <http://cdfa.ca.gov/dairy>

Email address: dairy@cdfa.gov



Area Code is (916) unless otherwise noted.

