



Agricultural Marketing Service
U.S. DEPARTMENT OF AGRICULTURE



Federal Grain Inspection Service's Financial Updates

Grain Inspection Advisory Committee

Fiscal Year 2022

FGIS User Fee Accounts

	Revenue	Obligations	Earnings / Loss	Operating Reserve
U.S. Grain Standards Act				
Inspection & Weighing	\$31,766,362	\$35,803,048	-\$4,036,686	\$3,036,951
Official Agencies	\$386,011	\$1,227,210	-\$841,198	\$1,201,070
Agricultural Marketing Act				
Rice	\$3,261,465	\$5,444,102	-\$2,182,636	\$3,063,037
Commodities	\$2,179,524	\$2,453,702	-\$274,178	\$1,569,203
Fiscal Year 2022 Total	\$37,593,362	\$44,928,062	-\$7,334,698	\$8,870,261

Dated: 11/21/2022

Fiscal Year 2022

Inspection and Weighing Program

	Revenue	Operating Expense	Earnings / Loss	Metric Tons
National	\$6,682,986	\$3,793,021	\$2,889,965	123,745,530
Field Offices				
Pacific Northwest Field Office	\$299,411	\$414,143	-\$114,732	2,720,001
Toledo Field Office	\$160,766	\$354,073	-\$193,307	1,191,938
New Orleans Field Office	\$1,348,774	\$1,372,632	-\$23,858	68,880,711
League City Field Office	\$418,581	\$665,113	-\$246,532	8,335,121
Export Hourly & Inspection Fees	\$22,201,047	\$27,435,613	-\$5,234,566	n/a
Non-Export Hourly & Inspection Fees¹	\$654,796	\$1,768,453	-\$1,113,657	n/a
Program Total	\$31,766,362	\$35,803,048	-\$4,036,686	n/a

¹Includes revenue and operating expenses for domestic field offices, scale testing programs, registration program, and Technology & Science Division.

Dated: 11/21/2022

User Fee Obligations by Program for FY22

FY 2022	Grain Insp. & Weigh.	Grain I&W \$/MT	Grain Official Agencies Supv	Grain OA Supv \$/MT	Rice	Commodities
5 Year Rolling Average (FY17-21)	123,853,477					
Actual Metric Tons FY 2022	123,745,530		225,570,903			
Salary and Benefits	\$30,610,243	0.247	\$1,000,004	0.004	\$4,657,288	\$1,988,947
Travel	\$809,744	0.007	\$37,010	0.000	\$130,772	\$35,675
Shipping and Moving Expenses	\$96,530	0.001	-\$6,958	0.000	-\$157	\$1,880
Rent and Utilities	\$1,150,199	0.009	\$12,119	0.000	\$188,841	\$159,196
Printing	\$22,932	0.000	\$2,133	0.000	\$3,932	\$655
Other Services ¹	\$2,355,016	0.019	\$179,502	0.001	\$427,781	\$119,176
Supplies and Materials	\$535,758	0.004	\$3,399	0.000	\$24,290	\$103,311
Equipment	\$165,442	0.001	\$ -	-	\$11,355	\$44,855
Grants, Subsidies, and Contributions	\$ -	0.000	\$ -	-	\$0	\$0
Insurance Claims	\$57,168	0.000	\$ -	-	\$0	\$0
Interest Paid	\$16	0.000	\$1	0.000	\$1	\$8
TOTAL	\$35,803,048	\$0.289	\$1,227,210	\$0.005	\$5,444,102	\$2,453,702

¹Other Services includes AMS overhead costs, Agency and Mission Area-level administrative support costs (e.g., Information Technology and Human Resource Support), as well as costs for FGIS contracts and training.

Dated: 11/21/2022



Agricultural Marketing Service
U.S. DEPARTMENT OF AGRICULTURE



Federal Grain Inspection Service's International Affairs Division Updates

Grain Inspection Advisory Committee



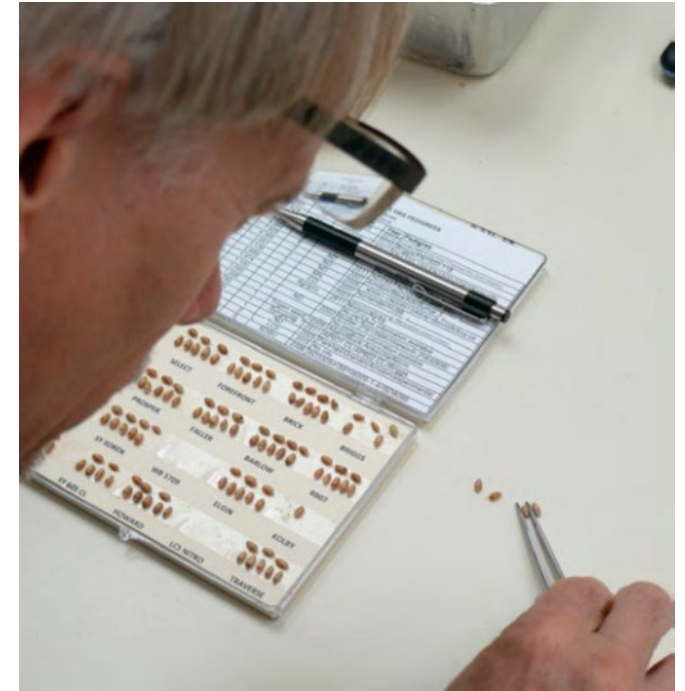
International Affairs Division

Topics to be Discussed

- International Trade Issues
- International Outreach
- Complaints



Container Sampling at Destination



Preparing Wheat Training Sample Boxes

International Trade Issues

China Decree 177

- U.S. Exporter list consists of exporters, export facilities, HQSG, and companies under 15k metric-ton exemptions who ship to China
- GACC did not post the last two updated lists. FGIS sent letter with latest list and asked GACC to post latest list. GACC posted Sept. update!
- GACC removed pulses, and food grade grains from Decree 248 and placed them back under 177
 - ❖ FAS asked GACC for clarification on this change – no response
 - ❖ FAS suggests pulse exporters continue to self register with GACC
- Importers require company name and address on APHIS phytosanitary certificate to match names and addresses on China's posted list.



International Outreach

Outreach Training Seminars

- FGIS / FAS Educational Series
 - ❖ FAS Mid-Career Professionals Advancing Careers Together (MPAC)
 - ❖ FGIS/FAS 1-week travel to S.D. and Missouri
 - Visit SB&B facility, NDGI, NGC, NDSU, seed/snack companies, Dakota reservation, bison ranch, and high-tech dairy
 - FAS plans to repeat this training next year
- U.S. Wheat Associates Lab Training – Santiago, Chile
- USDA Cooperators Call to plan outreach activities for FY23



International Outreach - Continued

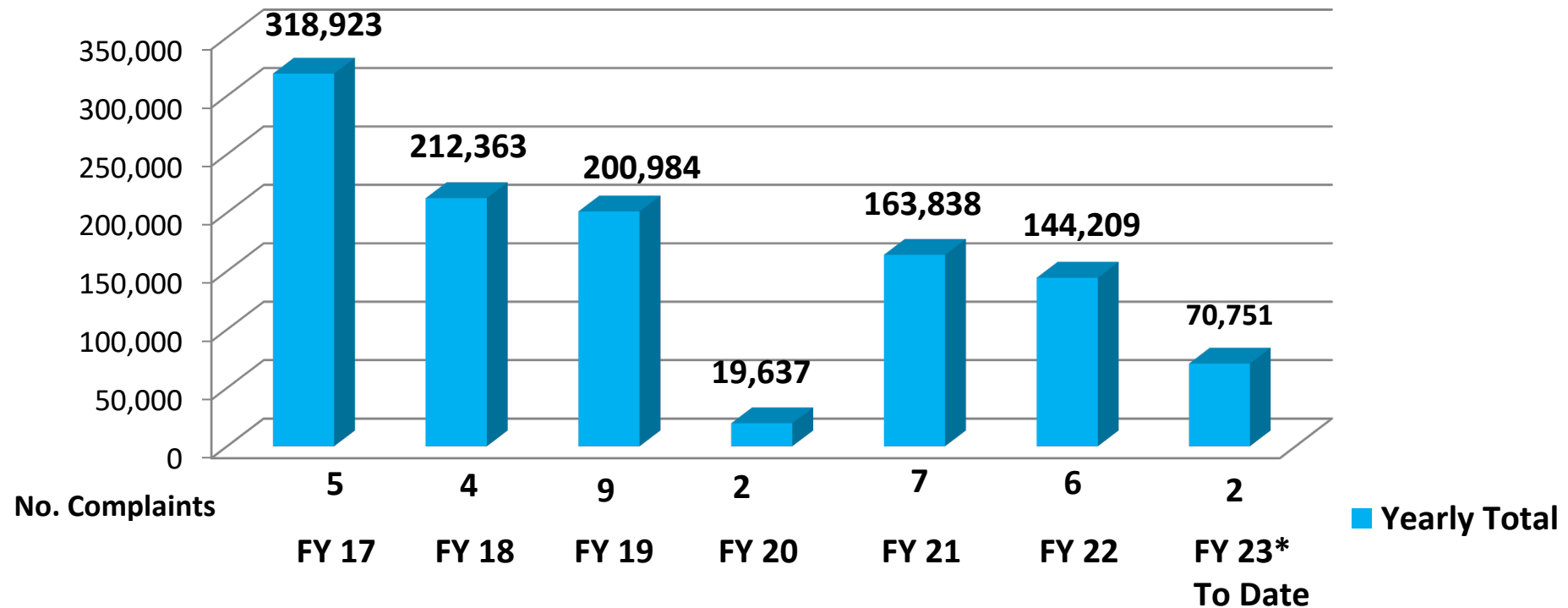
- Update content for older translated presentations
- Develop new presentation for onboarding new employees
 - Explain FGIS Divisions' roles / responsibilities
- Implement Foreign Travel Training Program
 - Develop cadre of qualified travelers
- Translate Container presentation into other languages



Foreign Complaints Received

Fiscal Year 2016 to Fiscal Year 2022

Metric Tons Involved





Foreign Complaints Received - Details

Quality Complaints

- China (2)



QUESTIONS?





Agricultural Marketing Service
U.S. DEPARTMENT OF AGRICULTURE



Federal Grain Inspection Service's Technology and Science Division Updates

Grain Inspection Advisory Committee



FGIS Technology and Science Division

- ***GIAC Recommendation***
 - *SBOC Study*
 - *Master instruments*
 - *No difference in protein and oil*





Mycotoxin Test Kit

- **2021 Federal Register: Proposed Changes to Criteria**
- **FR Notice: Response to Comments**
- **Two changes to mycotoxin test kit criteria:**
 - **Three test readers**
 - **Two analysts for performance verification**



Technology & Instrument Evaluation

- **FR Notice for public comment**
- **Comments focused on clarification of terminology**
- **Minor edits made to User Guide**
- **Next steps: internal implementation plan**
- **[Approved Equipment | Agricultural Marketing Service \(usda.gov\)](#)**





Imaging Technology

Continue exploring R&D efforts to evaluate imaging technology

- **FR Notice (published February 15)**
- **Partner with manufacturers**
- **Workplan in development**
- **Focus on medium grain rice**
- **Alternative/options for California**





Current Events

- **US Agency for International Development (USAID): Bureau of Humanitarian Assistance**
 - **Over 40 analytes under method development**
 - **Internal process improvement initiatives: ISO 17025**





Other Current Events

- **Evaluate the impact of foreign material on paraquat in soybeans**
- **Expand ISO 17025 scope for testing of GE corn and soybeans**
- **Implement NTEP protein and oil calibration program to reduce variability**



Thank you!

Edward Jhee, Ph.D.

Director, FGIS TSD

816-702-3801

edward.m.jhee@usda.gov



Agricultural Marketing Service
U.S. DEPARTMENT OF AGRICULTURE



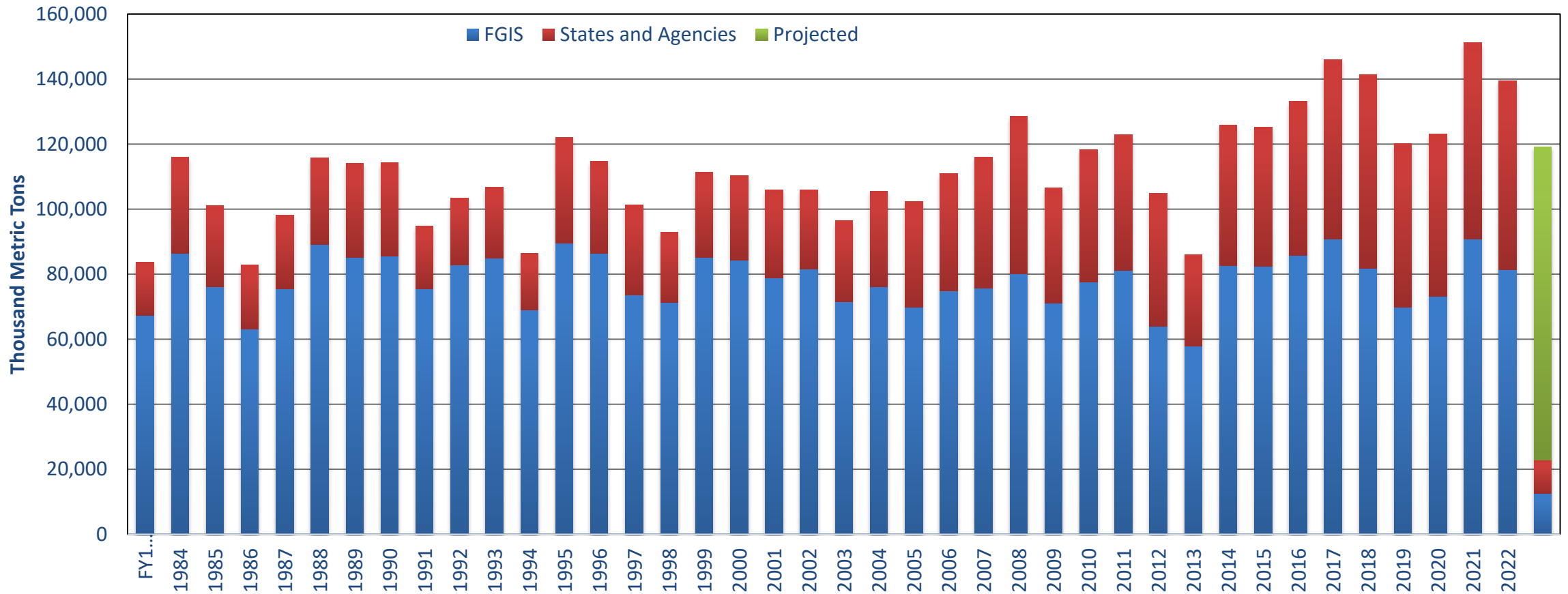
Field Management Division GIAC Updates

Anthony Goodeman, Director

December 14, 2022



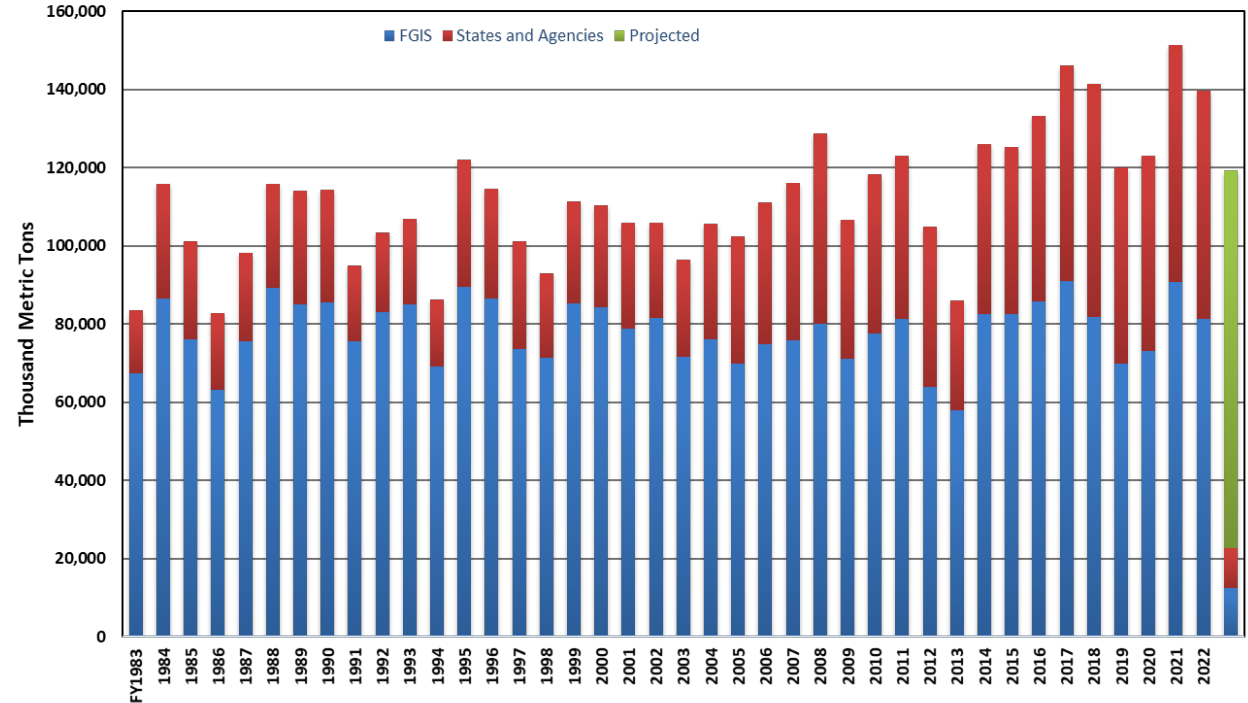
Fiscal Year Total Export Grain Inspections



Fiscal Year Total Export Grain Inspections (with analysis)

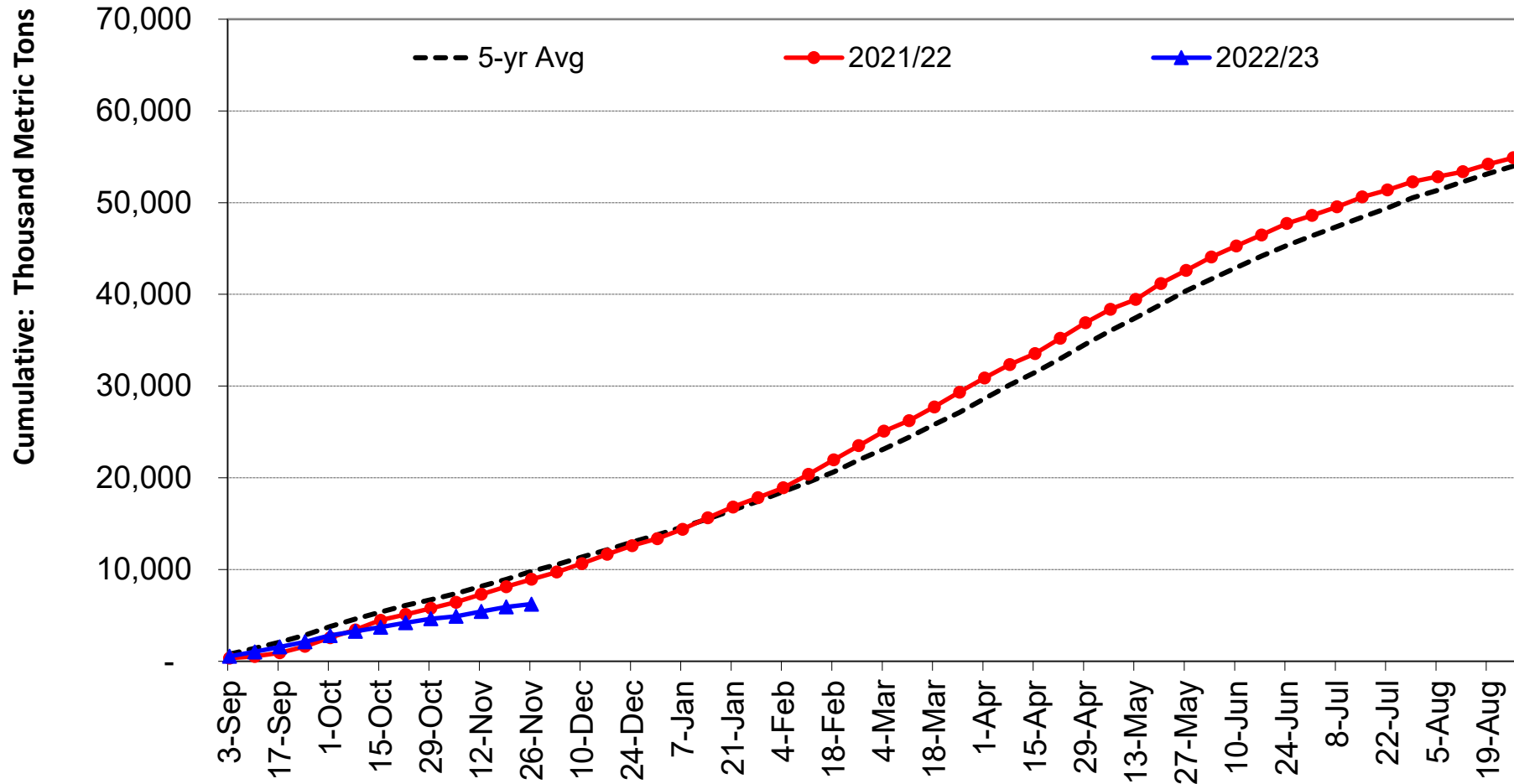
-Overall export grain inspection tonnage for FY 2023 is currently tracking 20.8% below last year.

-This chart shows how we may complete the FY if we stay on same trajectory, however markets change constantly as we have observed the last several years.





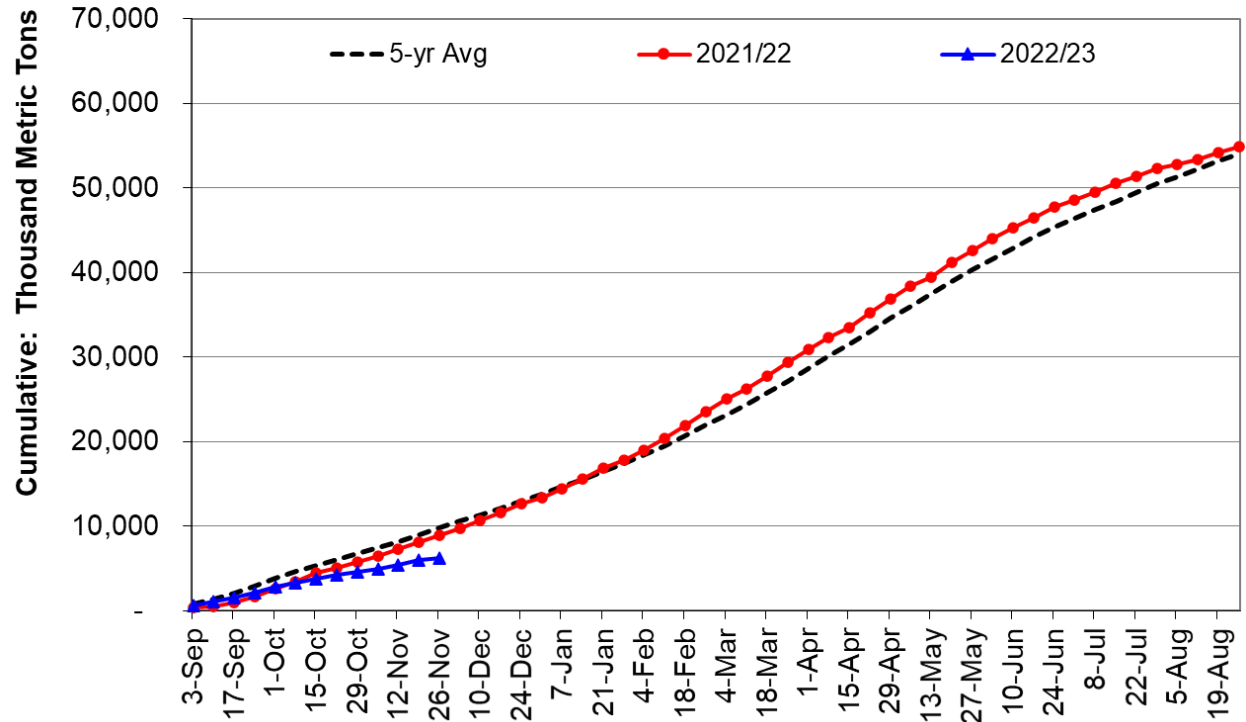
Export Corn: FGIS, States & Agencies



Export Corn: FGIS, States & Agencies (with analysis)

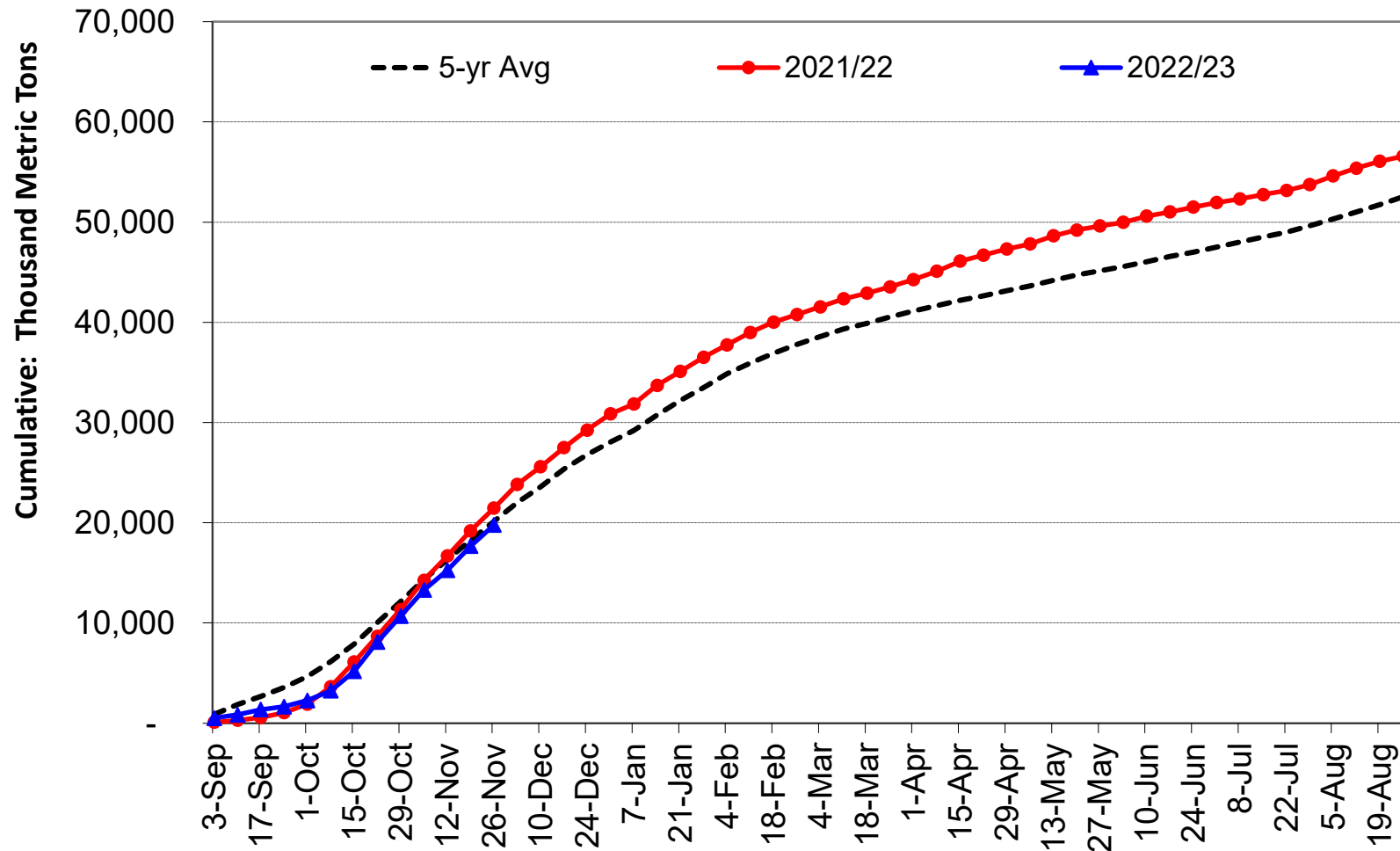
-Corn exports are down 30% compared to last year and down 36% compared to the 5-year average.

-Mexico is the number one destination totaling 43% of all corn exports inspections with China at 32% and Japan at 12%.





Export Soybean: FGIS, States & Agencies

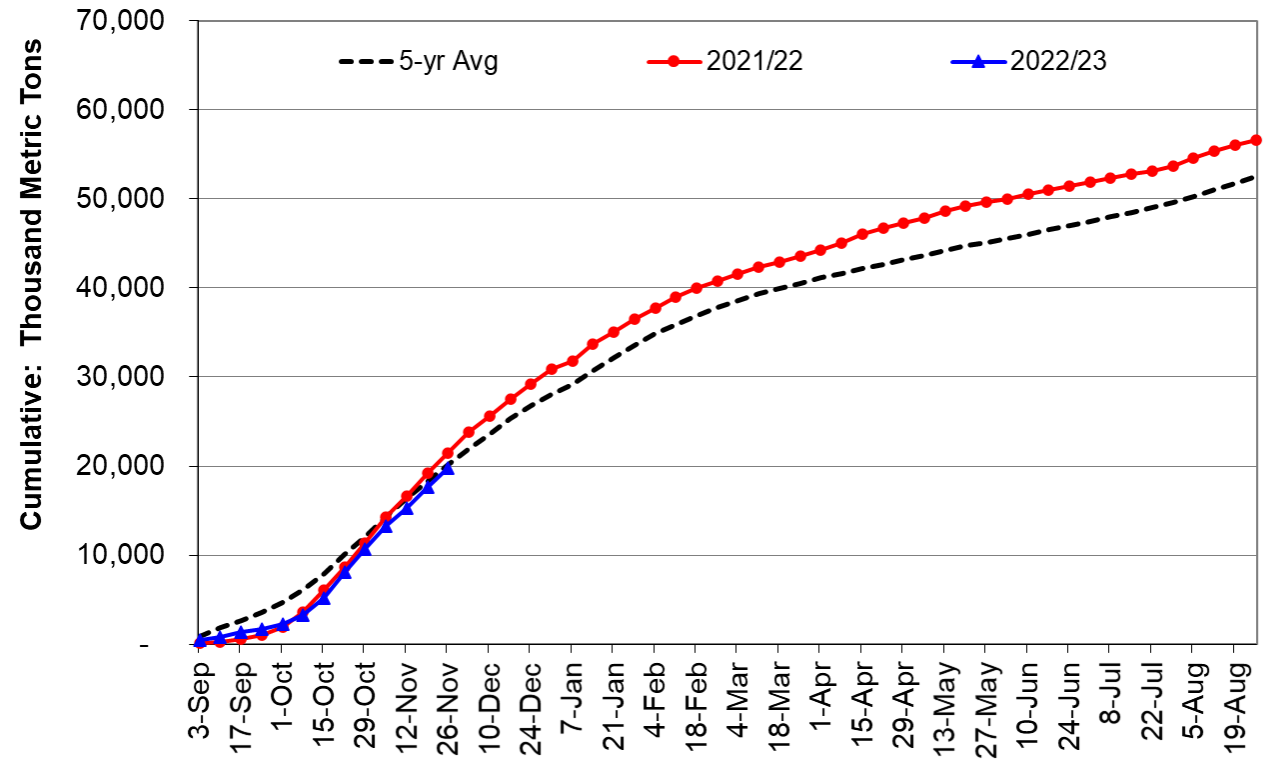




Export Soybean: FGIS, States & Agencies (with analysis)

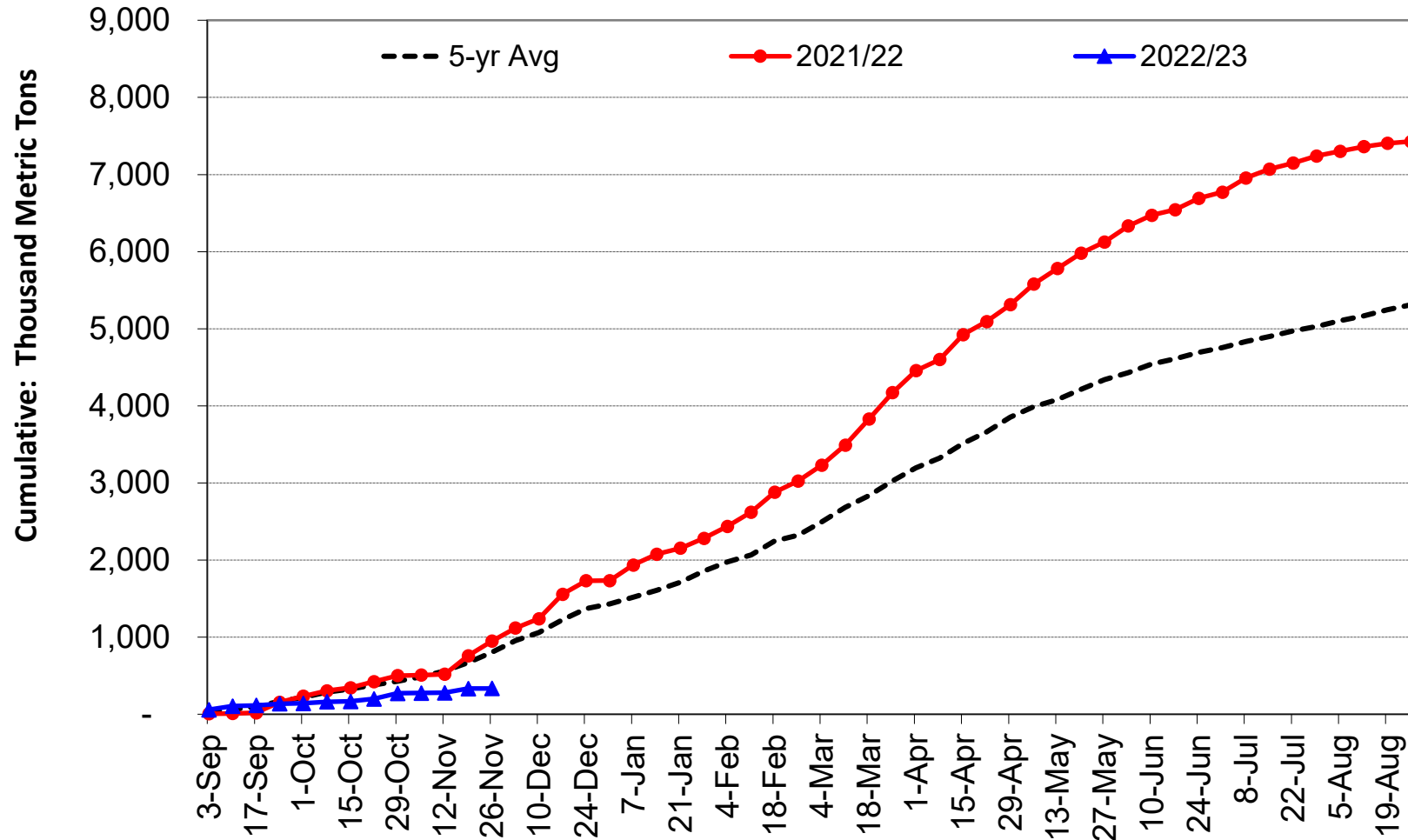
-Soybean exports are down 8% compared to last year and down 2% compared to the 5-year average.

-China is the number one destination totaling 69% of all soybean export with Mexico at 7% and Egypt at 5%.





Export Sorghum: FGIS, States & Agencies

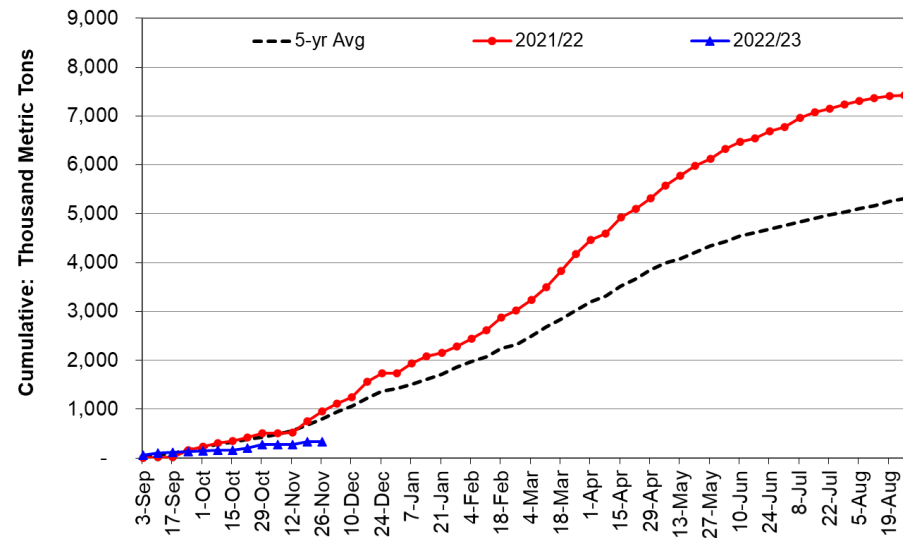




Export Sorghum: FGIS, States & Agencies (with analysis)

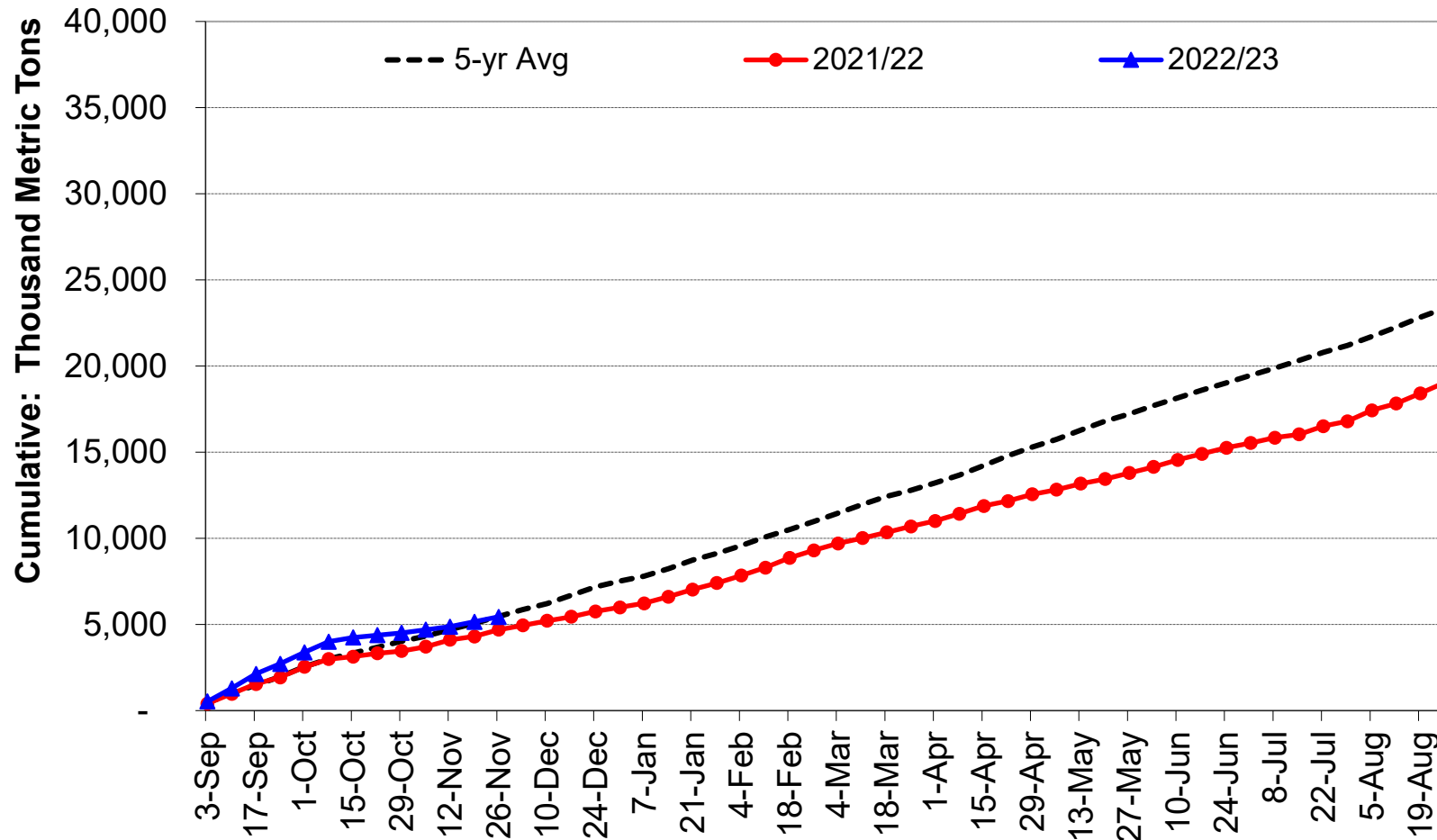
-Sorghum exports are down 65% lower compared to last year and down 58% compared to the 5-year average.

-Mexico is the number one destination totaling 22% of all sorghum export inspections with China at 18% and Sudan at 17%.





Export Wheat: FGIS, States & Agencies

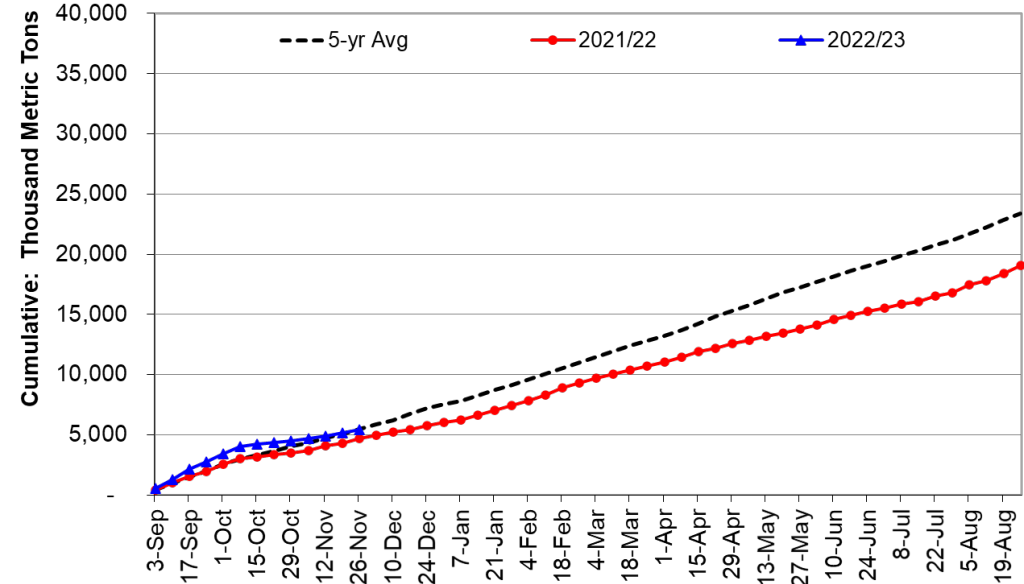




Export Wheat: FGIS, States & Agencies (with analysis)

-Wheat exports are up 16% compared to last year but down 1% compared to the 5-year average.

-Mexico is the number one destination totaling 18% of all wheat export inspections with Philippines at 11% and Japan at 9%.





GIAC Recommendation Updates

- **Consolidation of Instructions**
- **APHIS Soybean Study (Systems Approach) – no FGIS funds used**
- **FDA MOU**



General Updates

- **Mississippi River Levels**
- **Hiring Activities**
 - New manager in New Orleans
 - Graders, Technicians, Supervisors, and Quality Assurance Specialists
- **Soybeans of Other Colors**
 - Presentation updated on website



Agricultural Marketing Service
U.S. DEPARTMENT OF AGRICULTURE



Official SBOC Results – 11/28/2022

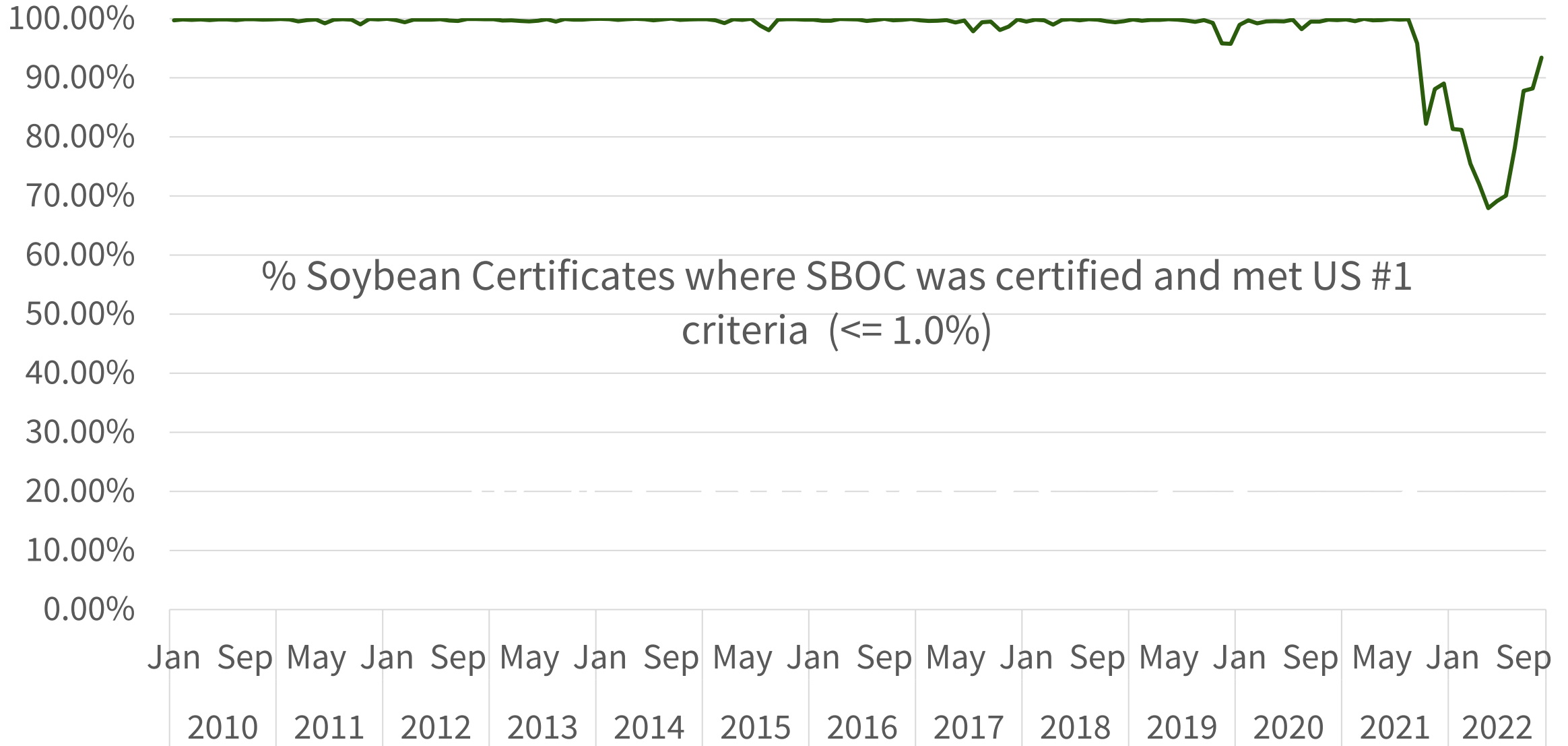


Terms

- ***Total Certificates*** - Number of Official inspection certificates with SBOC reported
- ***% #1 SBOC*** – % of certificates where SBOC result met the grade criteria for US #1 ($\leq 1\%$)
- ***% #2 SBOC*** – % of certificates where SBOC result met the grade criteria for US #2 ($> 1\%$ and $\leq 2\%$)
- ***% #3 SBOC*** – % of certificates where SBOC result met the grade criteria for US #3 ($> 2\%$ and $\leq 5\%$)
- ***% Exceeds #1 SBOC*** - % of certificates where SBOC result did not meet the grade criteria for US #1 ($> 1\%$)
- ***Avg SBOC*** – Average SBOC result across all certified results. (certificates, not work records)
- ***Certs Exceeding #1 SBOC*** - Number of Official inspection certificates where the reported result did not meet the grade criteria for US #1.

2011-2022 Certificates with SBOC

Calendar Year	Total Certificates	% #1 SBOC	% #2 SBOC	% #3 SBOC	% Exceeds #1 SBOC	Avg SBOC	Certs Exceeding #1 SBOC
2011	62327	99.69%	0.17%	0.08%	0.31%	0.02%	194
2012	72161	99.81%	0.07%	0.04%	0.19%	0.02%	138
2013	64194	99.81%	0.12%	0.03%	0.19%	0.02%	122
2014	84214	99.90%	0.03%	0.05%	0.10%	0.02%	88
2015	83218	99.73%	0.14%	0.07%	0.27%	0.02%	226
2016	110560	99.79%	0.14%	0.04%	0.21%	0.01%	232
2017	96564	99.18%	0.46%	0.26%	0.82%	0.03%	792
2018	89085	99.64%	0.26%	0.07%	0.36%	0.02%	319
2019	92367	98.78%	0.78%	0.35%	1.22%	0.08%	1123
2020	114375	99.47%	0.37%	0.12%	0.53%	0.03%	602
2021	116794	92.19%	5.40%	2.06%	7.81%	0.27%	9127
2022	133681	81.30%	12.49%	5.67%	18.70%	0.64%	24999



July 2021 – November 28, 2022

Month	Total Certificates	% #1 SBOC	% #2 SBOC	% #3 SBOC	% Exceeds #1 SBOC	Avg SBOC	Certs Exceeding #1 SBOC
Jul	3907	99.85%	0.13%	0.03%	0.15%	0.03%	6
Aug	3553	99.92%	0.08%	0.00%	0.08%	0.01%	3
Sep	5593	95.83%	2.54%	1.36%	4.17%	0.17%	233
Oct	23496	82.21%	10.37%	6.12%	17.79%	0.61%	4181
Nov	22436	88.10%	9.56%	2.13%	11.90%	0.36%	2671
Dec	17827	89.02%	8.58%	2.25%	10.98%	0.37%	1958
Jan	13748	81.32%	11.46%	6.92%	18.68%	0.58%	2568
Feb	9838	81.18%	13.23%	5.35%	18.82%	0.61%	1852
Mar	9966	75.47%	19.06%	5.13%	24.53%	0.70%	2445
Apr	8622	71.99%	17.29%	10.26%	28.01%	0.79%	2415
May	8648	67.92%	17.78%	12.95%	32.08%	0.96%	2774
Jun	8276	69.13%	17.04%	12.47%	30.87%	0.95%	2555
Jul	8751	70.06%	16.27%	12.48%	29.94%	0.96%	2620
Aug	9461	78.10%	16.12%	4.86%	21.90%	0.72%	2072
Sep	9042	87.79%	9.04%	2.51%	12.21%	0.51%	1104
Oct	28222	88.19%	9.09%	2.34%	11.81%	0.52%	3334
Nov	19107	93.41%	5.99%	0.59%	6.59%	0.41%	1260

FGIS Reporting Regions

Only official samples are associated to the region.

Samples are not necessarily grown in the region where officially inspected/graded.

Submitted samples are excluded from region reporting in the subsequent charts and charted separately.

