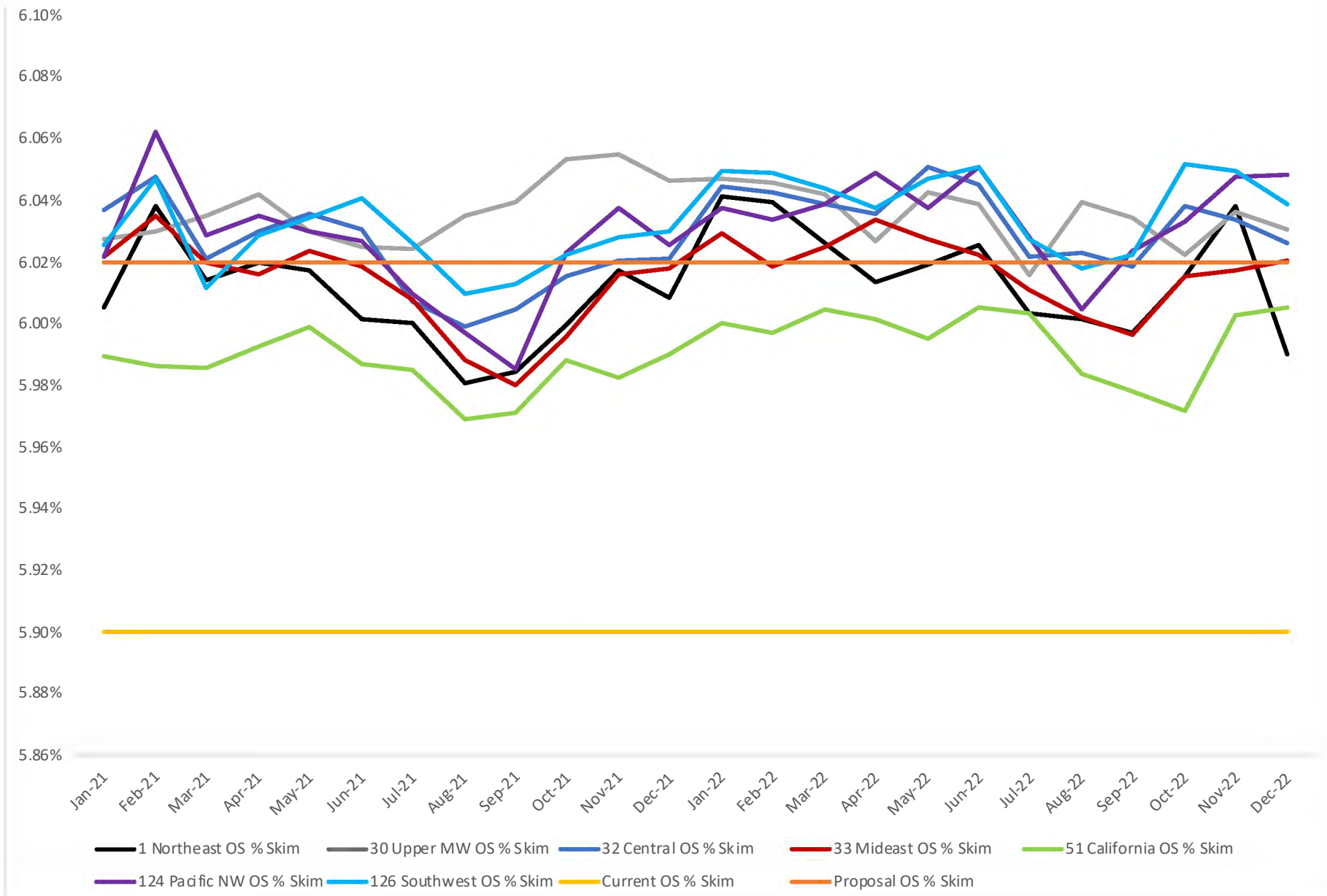
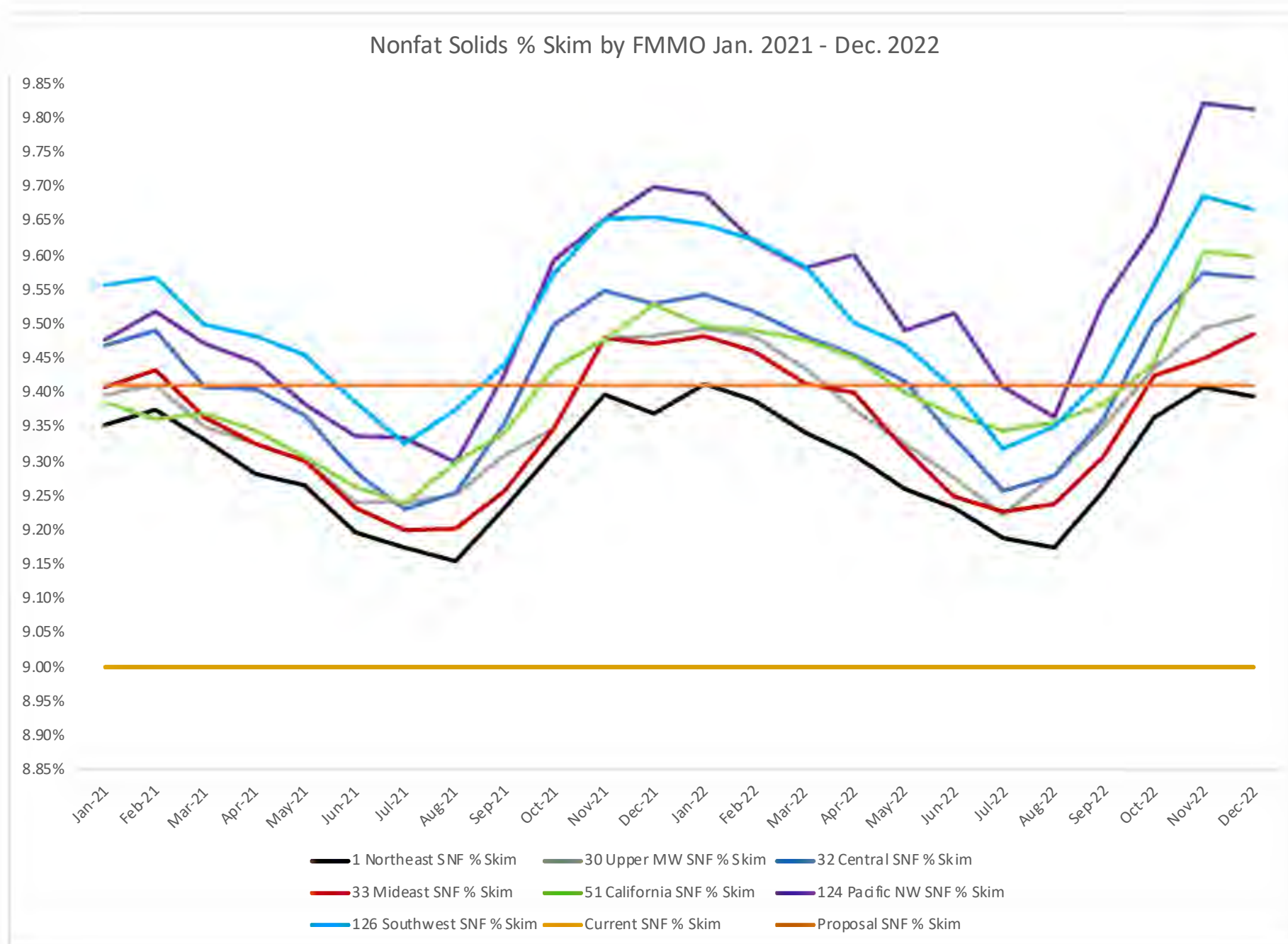
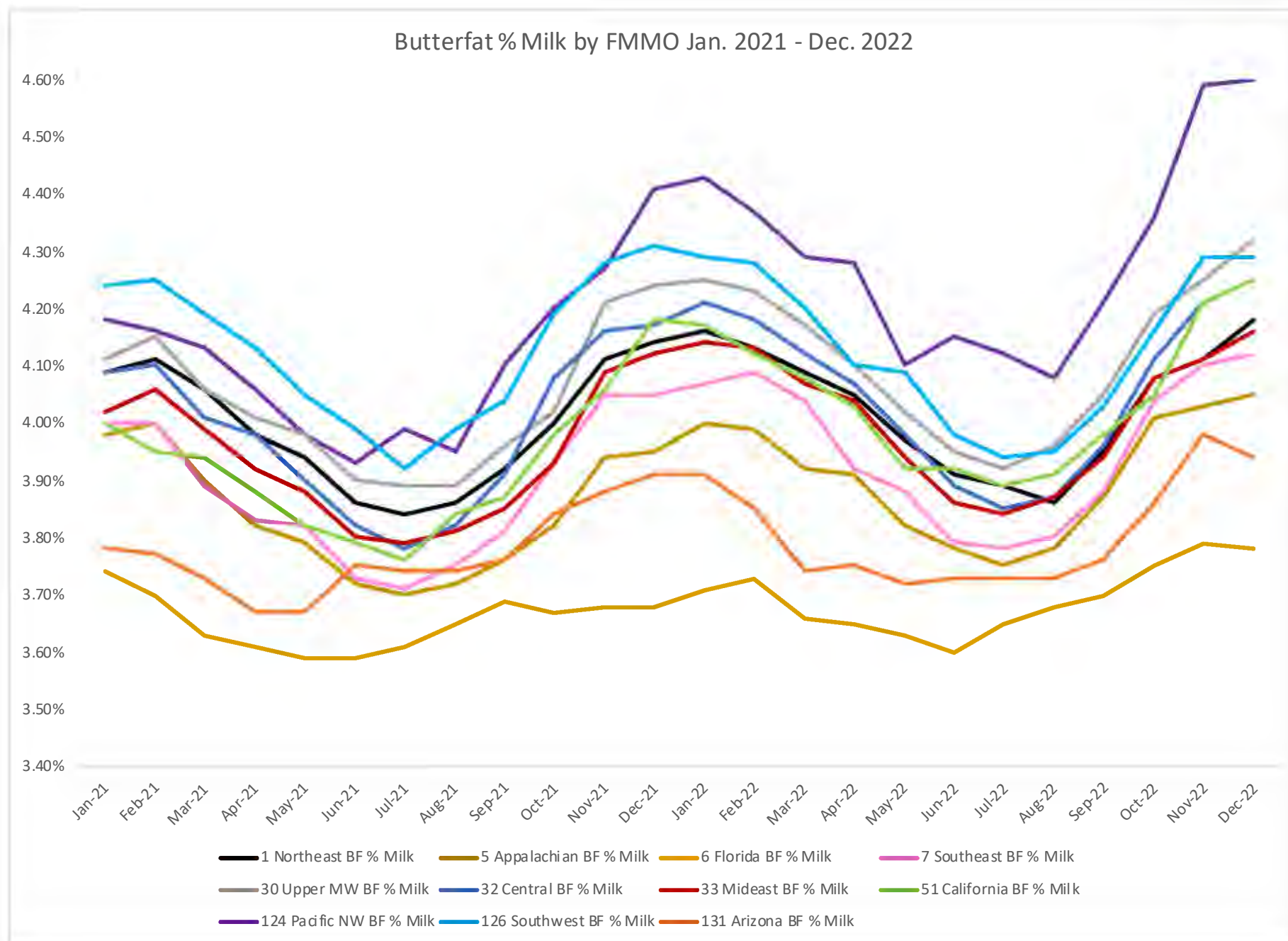


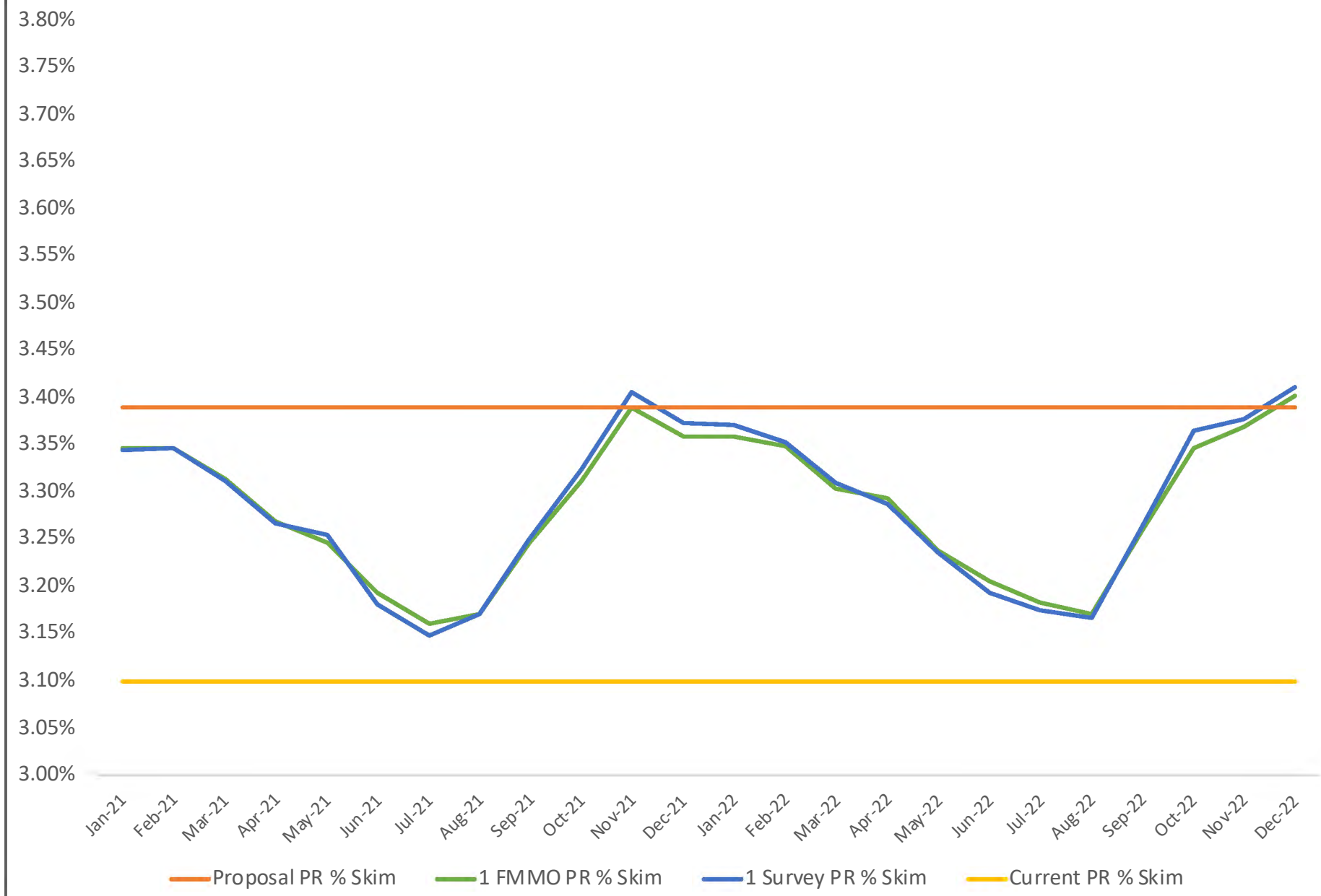
Other Solids % Skim by FMMO Jan. 2021 - Dec. 2022





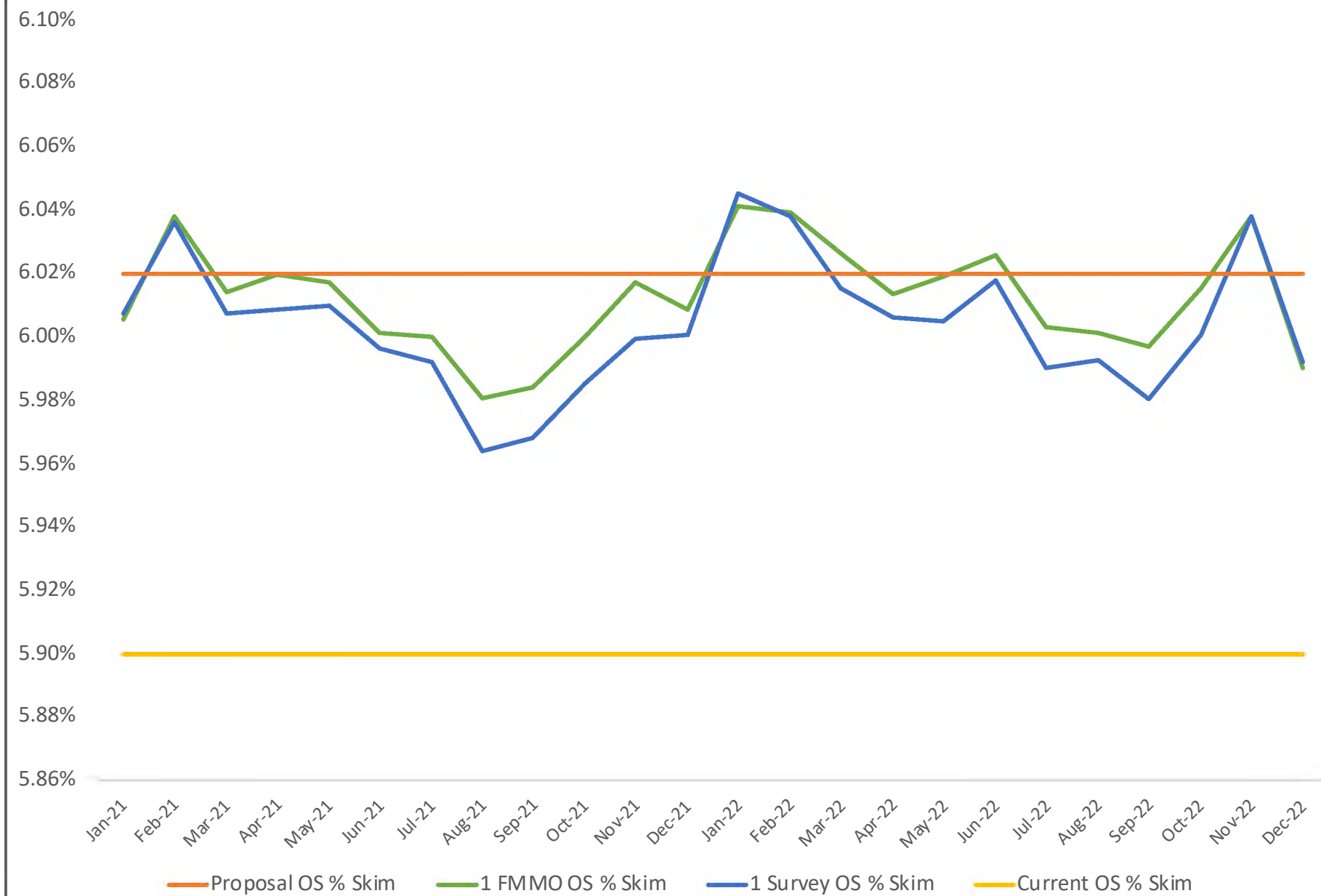


Protein % Skim FMMO 1 Northeast



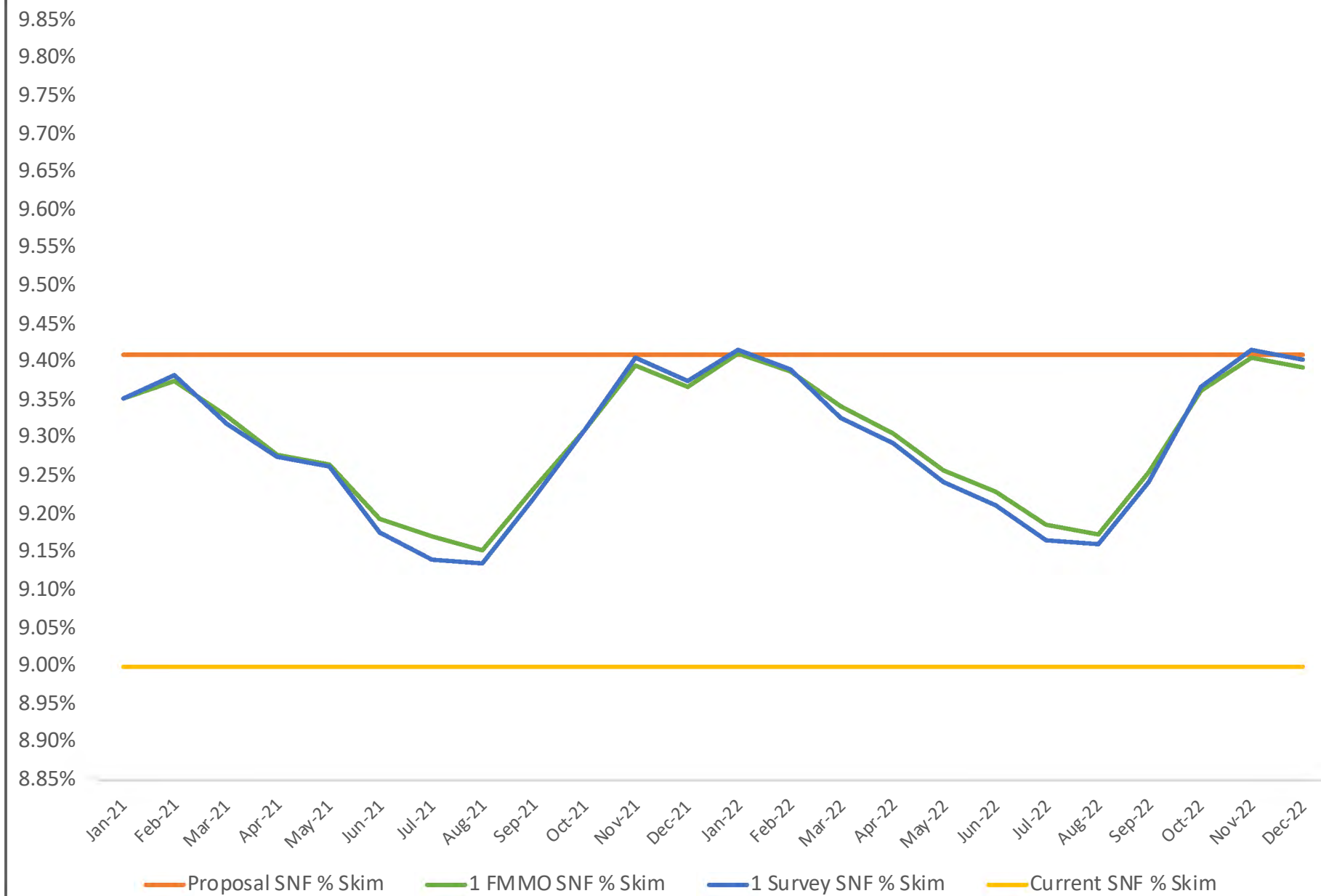
Data Source: USDA Exhibit 17 Component Tests in Producer Milk by Order;
Fluid Milk Plant Survey

Other Solids % Skim FMMO 1 Northeast



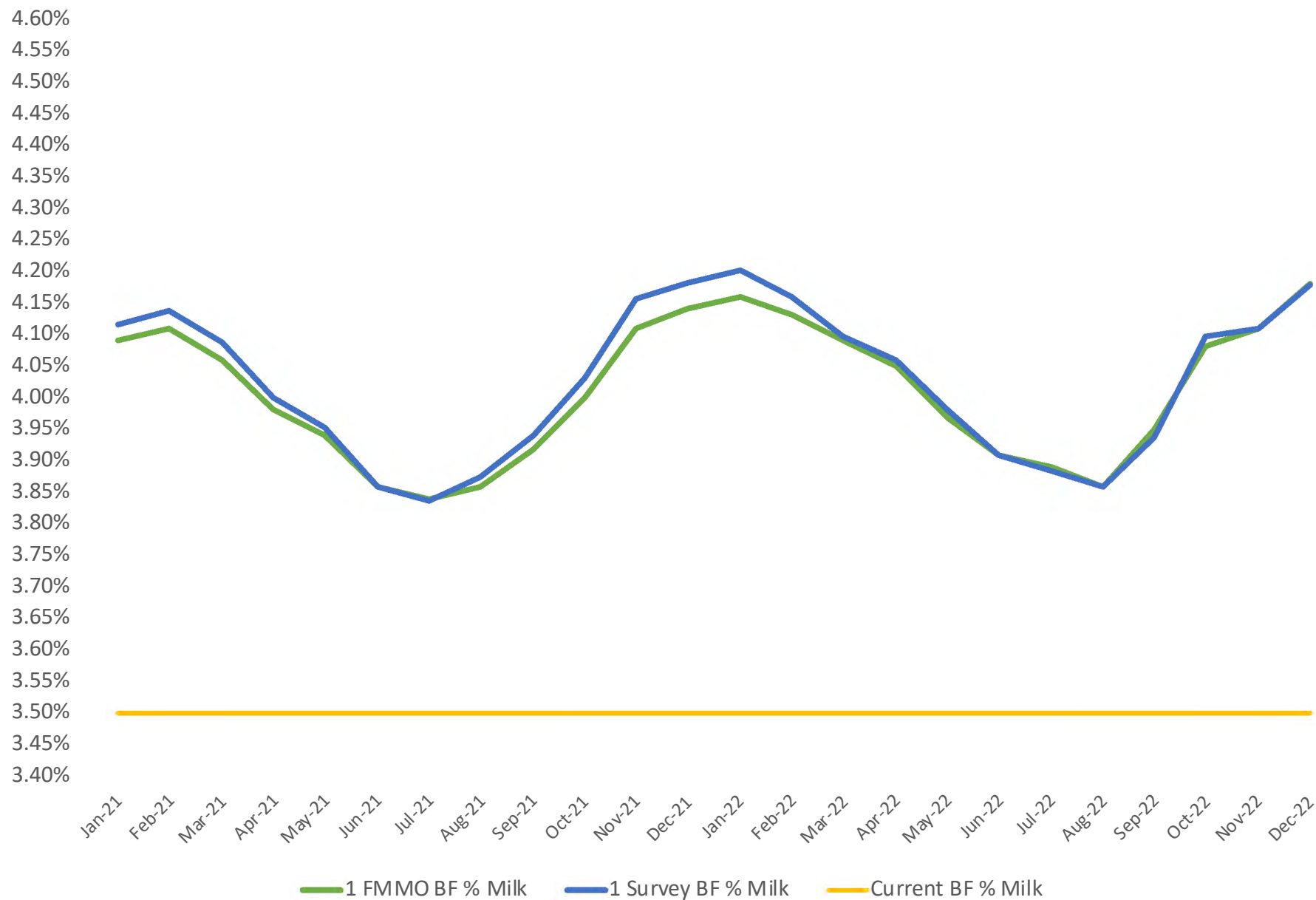
Data Source: USDA Exhibit 17 Component Tests in Producer Milk by Order;
Fluid Milk Plant Survey

Nonfat Solids % Skim FMMO 1 Northeast



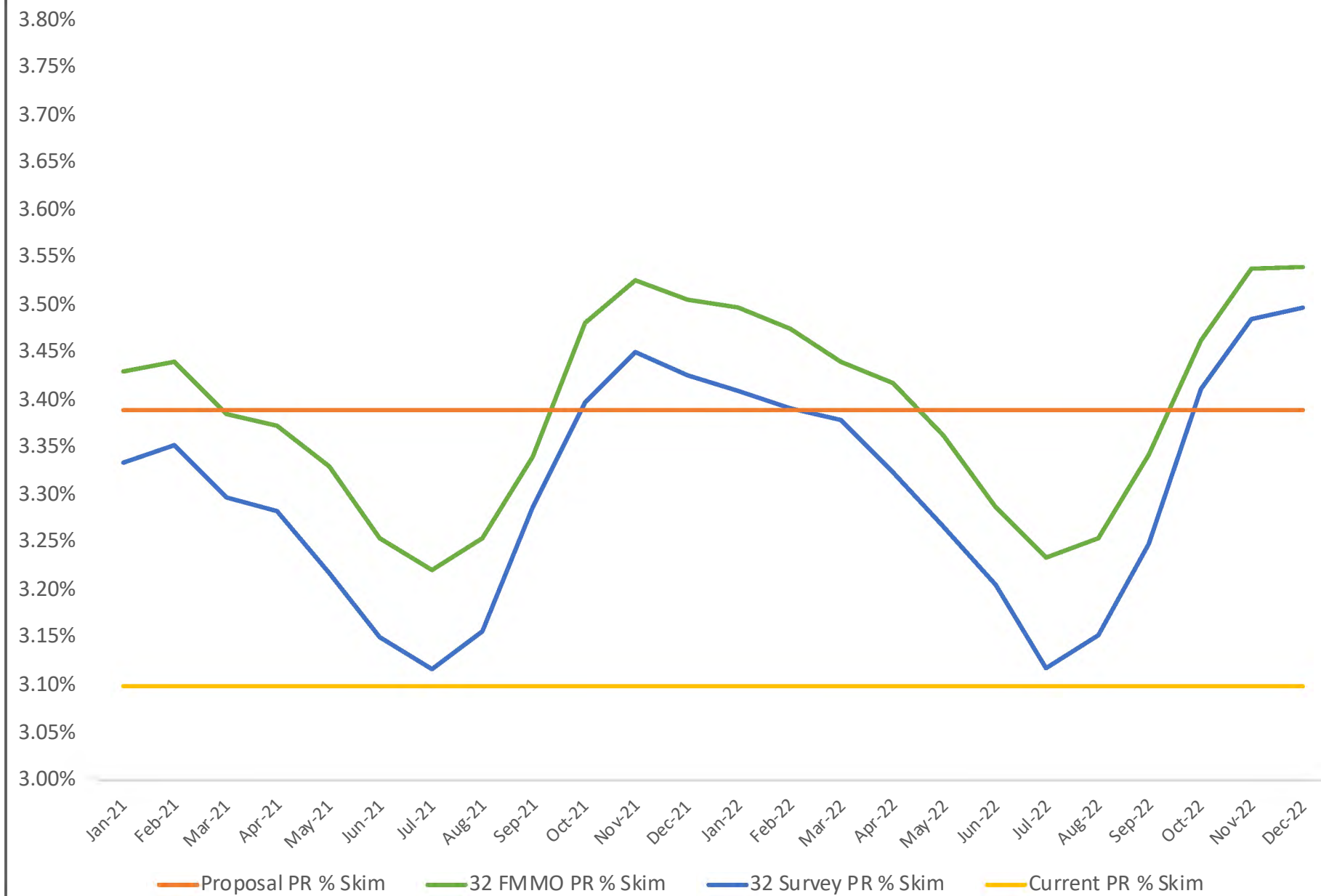
Data Source: USDA Exhibit 17 Component Tests in Producer Milk by Order;
Fluid Milk Plant Survey

Butterfat % Milk FMMO 1 Northeast



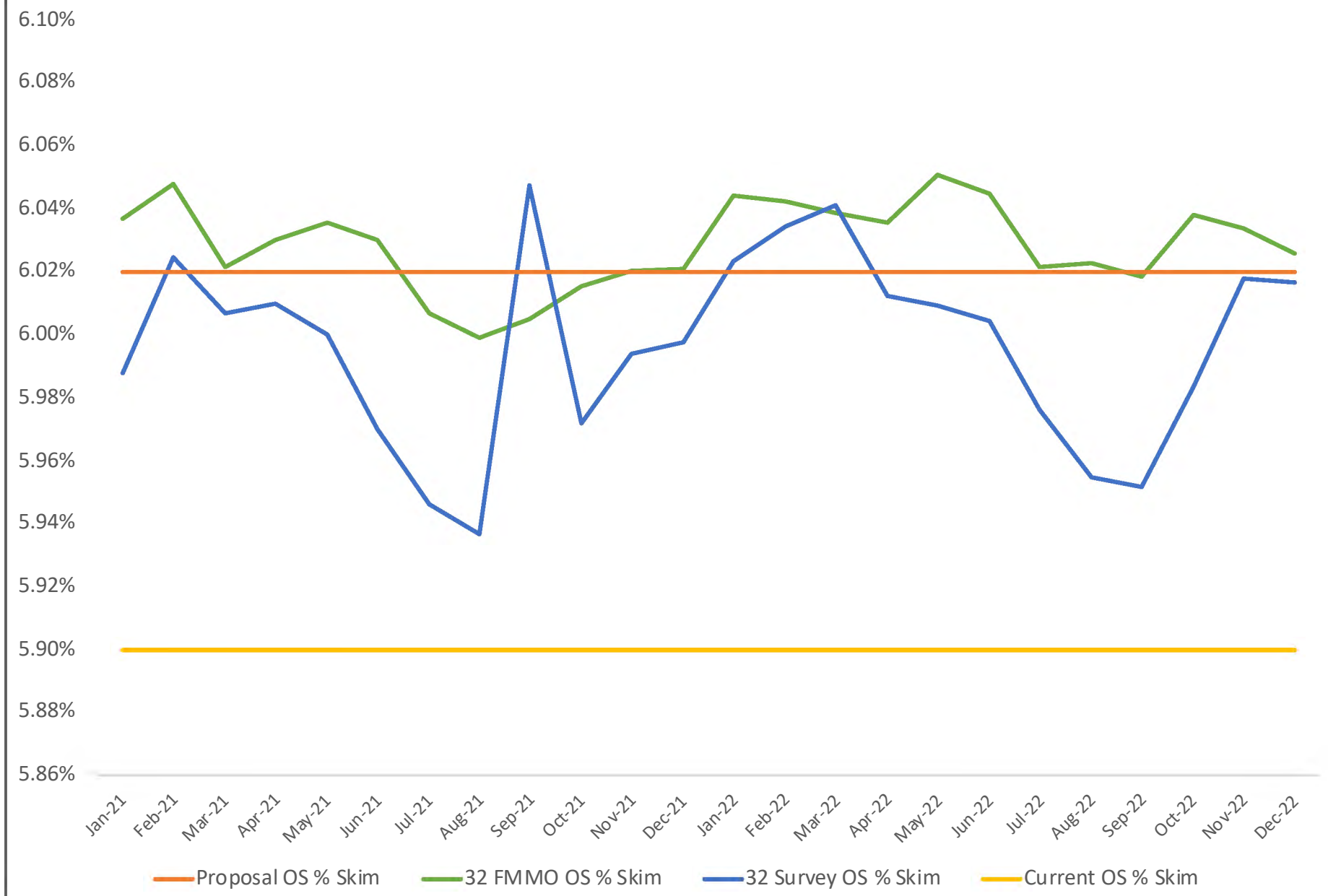
Data Source: USDA Exhibit 17 Component Tests in Producer Milk by Order;
Fluid Milk Plant Survey

Protein % Skim FMMO 32 Central

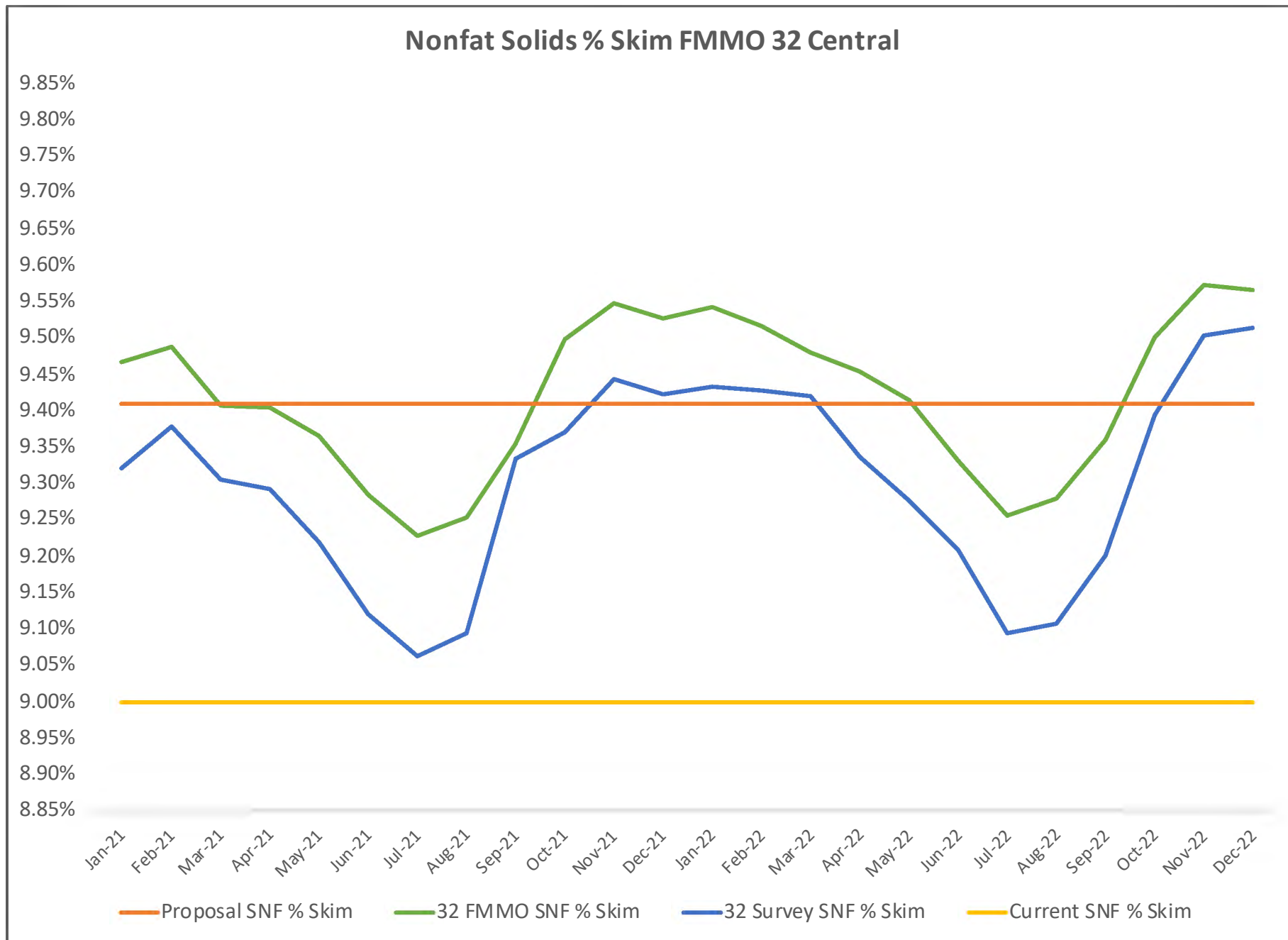


Data Source: USDA Exhibit 17 Component Tests in Producer Milk by Order;
Fluid Milk Plant Survey

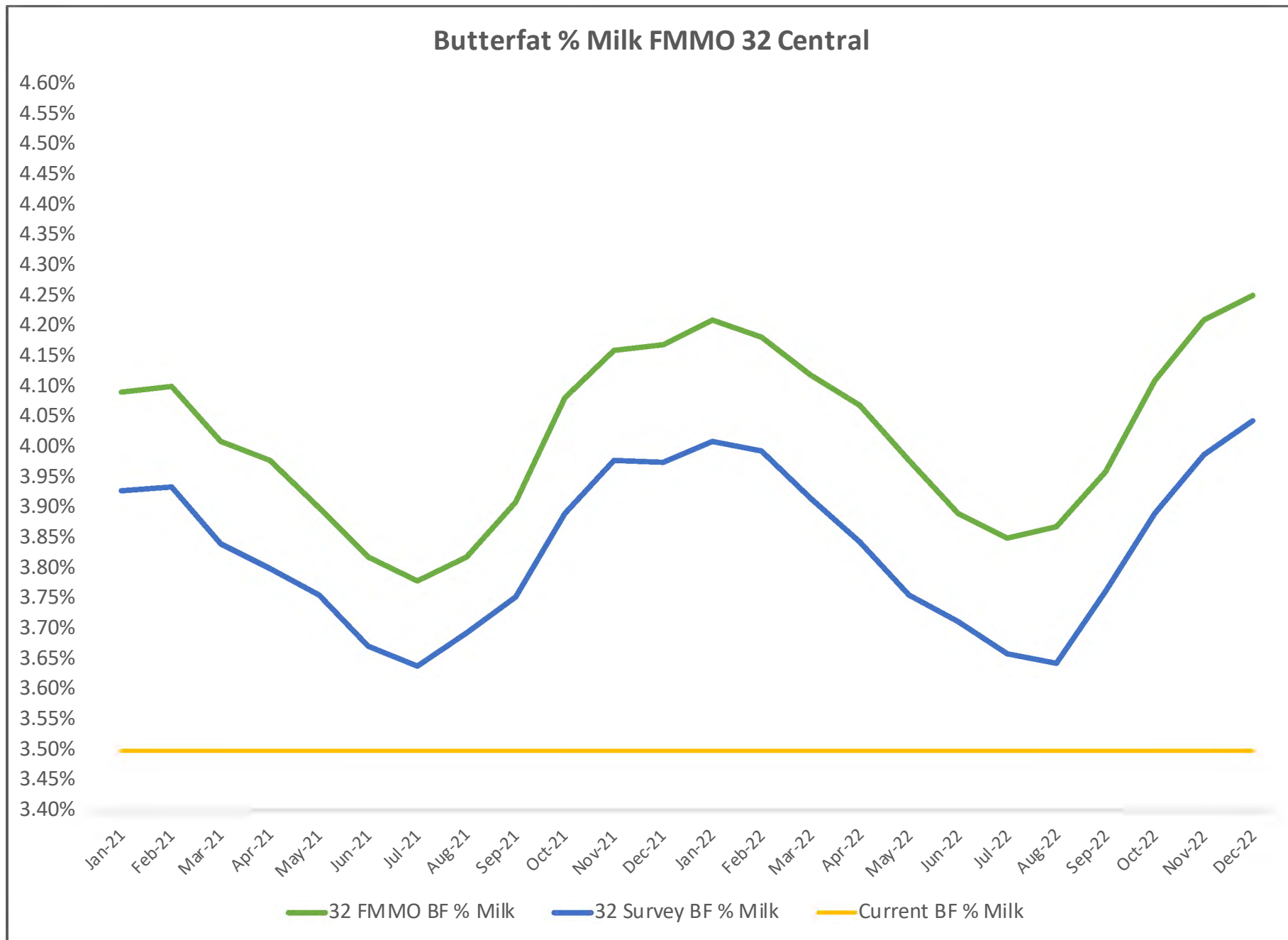
Other Solids % Skim FMMO 32 Central



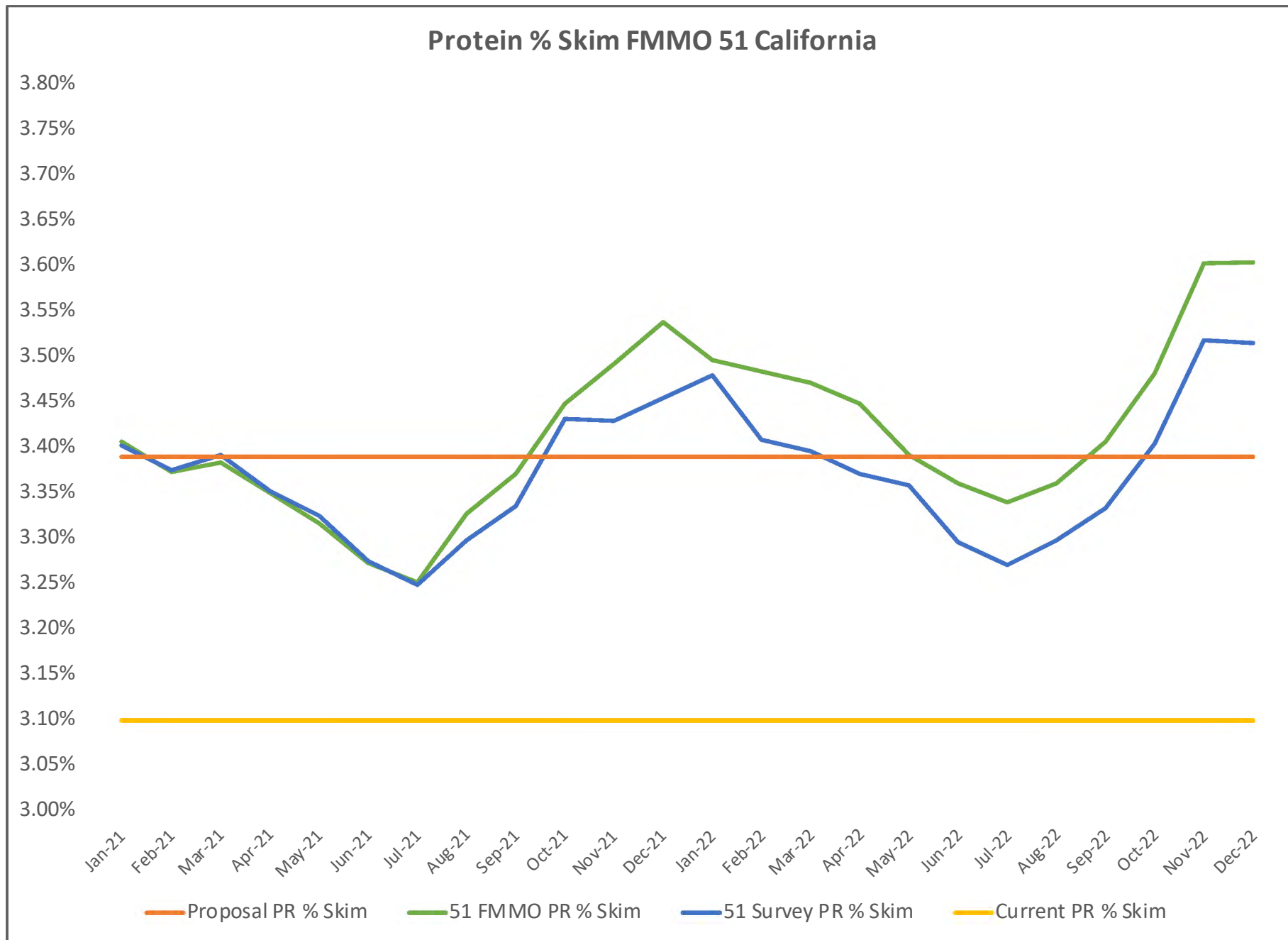
Data Source: USDA Exhibit 17 Component Tests in Producer Milk by Order;
Fluid Milk Plant Survey



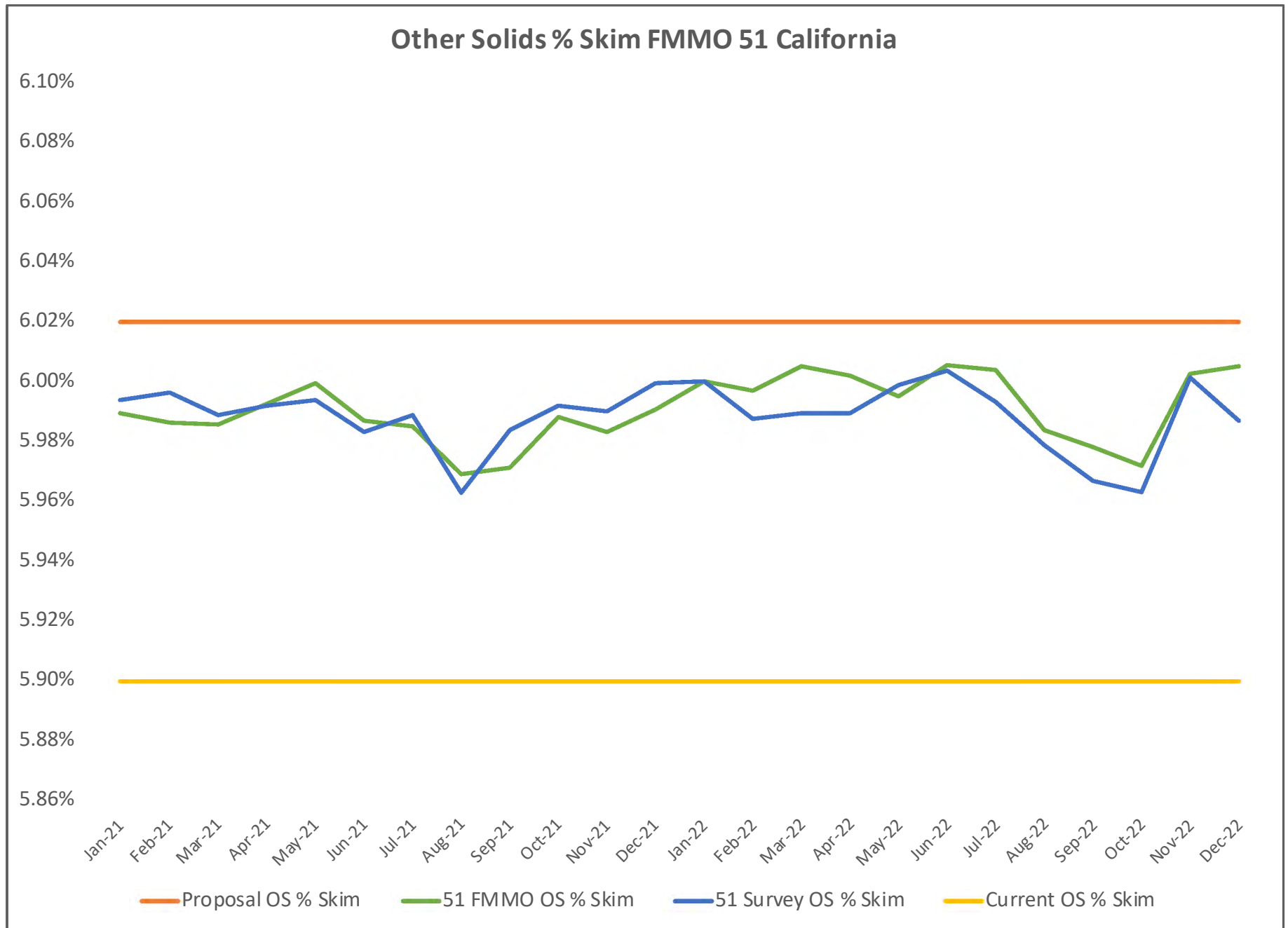
Data Source: USDA Exhibit 17 Component Tests in Producer Milk by Order;
Fluid Milk Plant Survey



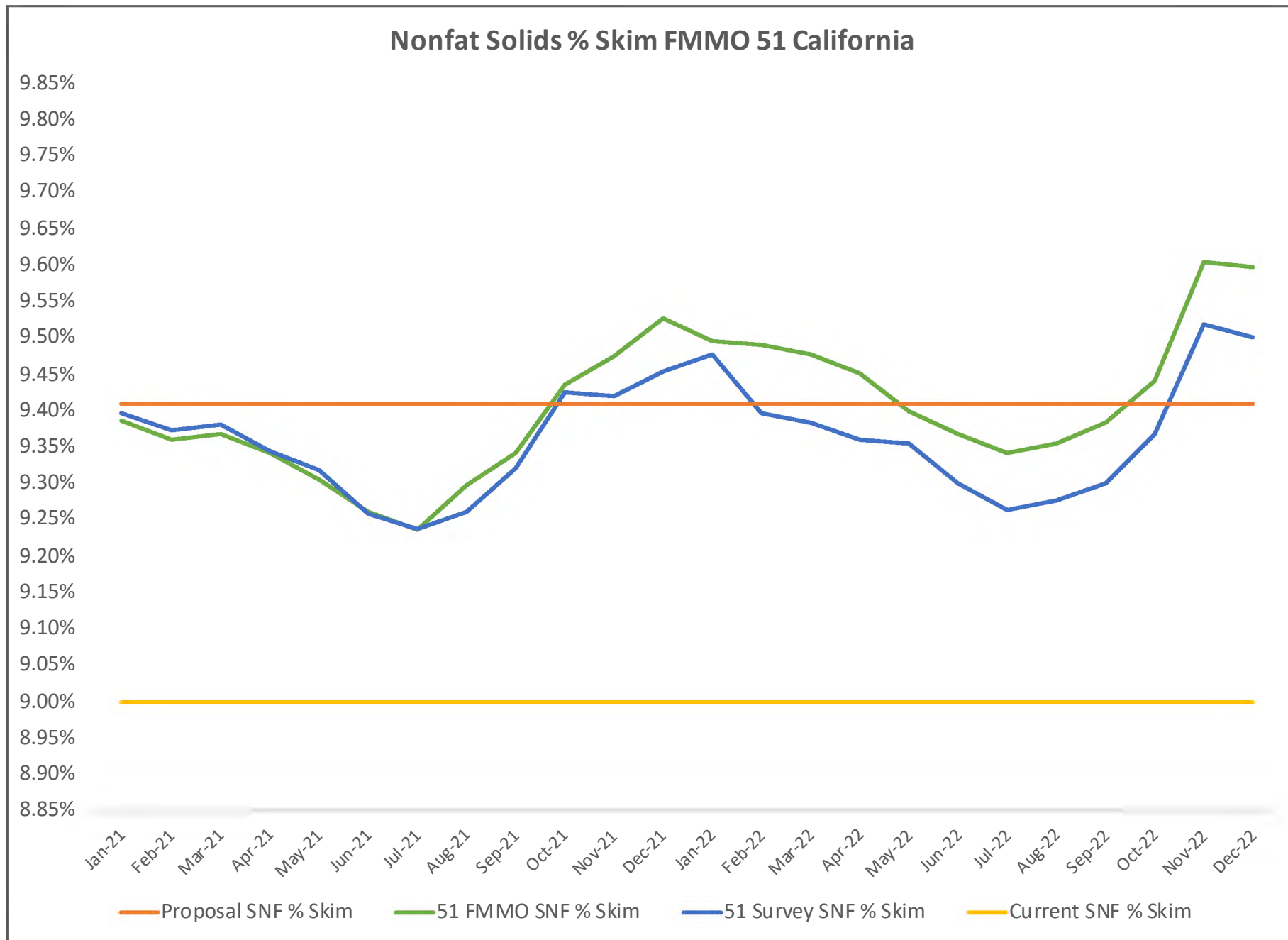
Data Source: USDA Exhibit 17 Component Tests in Producer Milk by Order;
Fluid Milk Plant Survey



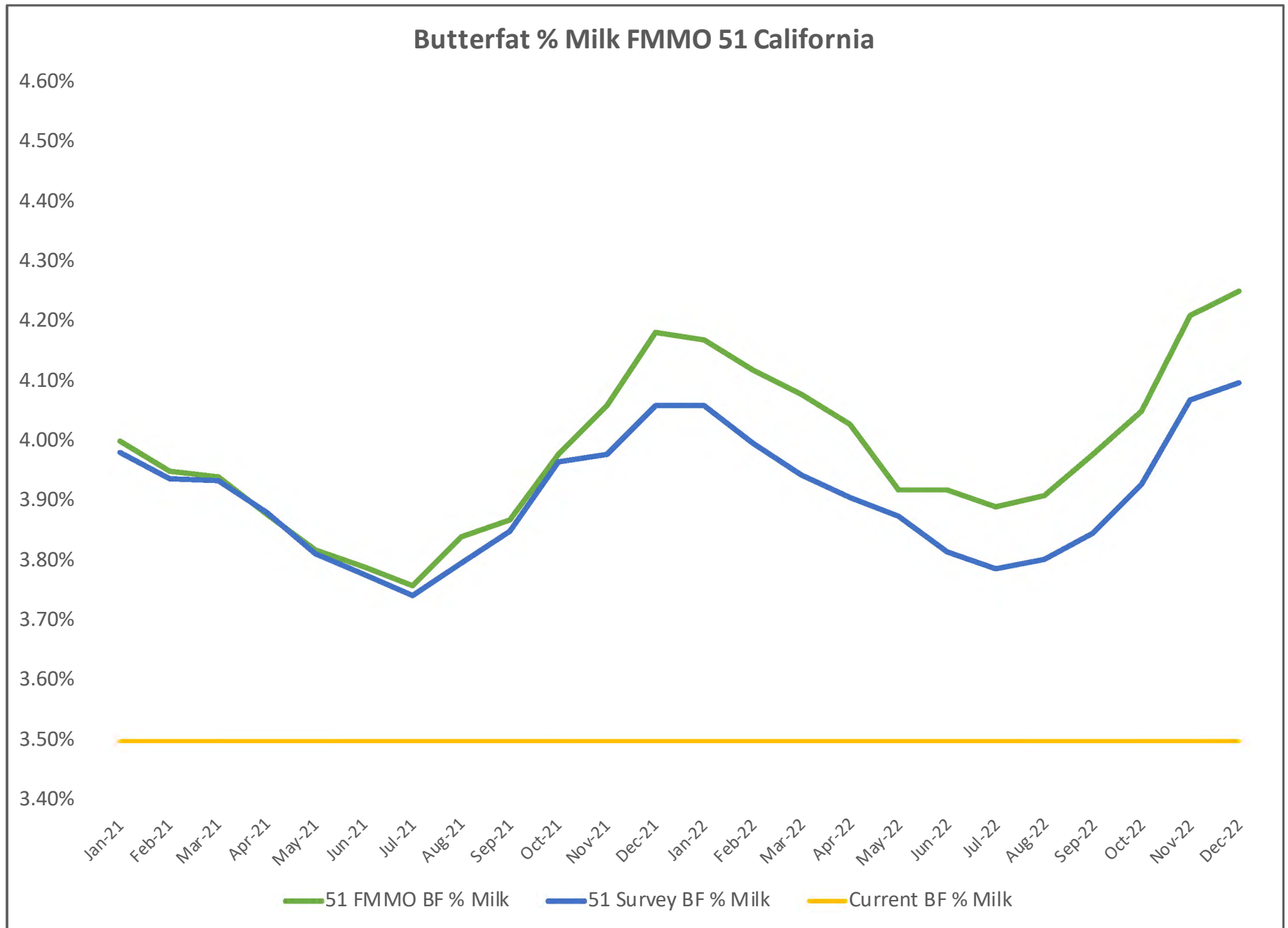
Data Source: USDA Exhibit 17 Component Tests in Producer Milk by Order;
Fluid Milk Plant Survey



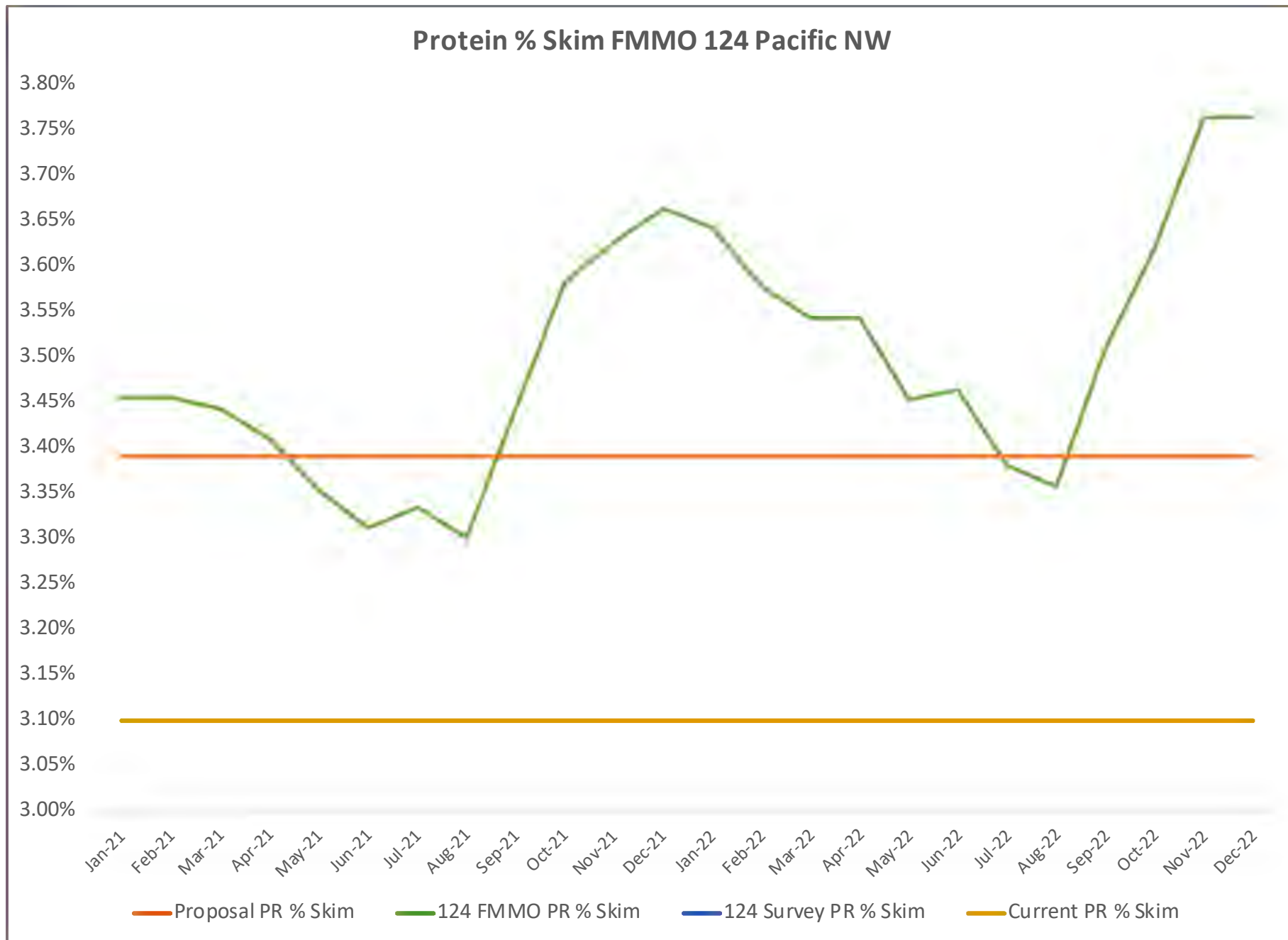
Data Source: USDA Exhibit 17 Component Tests in Producer Milk by Order;
Fluid Milk Plant Survey



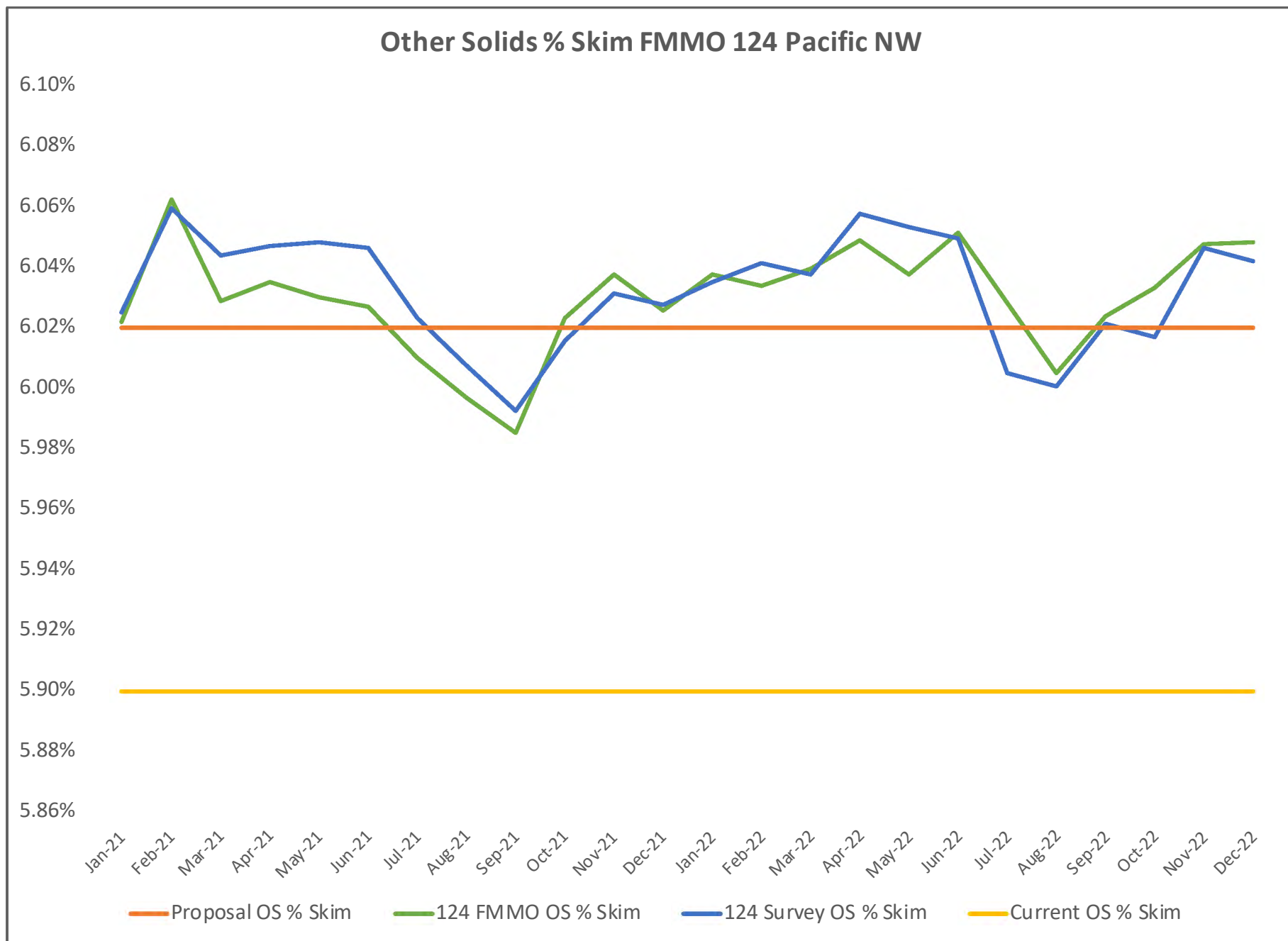
Data Source: USDA Exhibit 17 Component Tests in Producer Milk by Order;
Fluid Milk Plant Survey



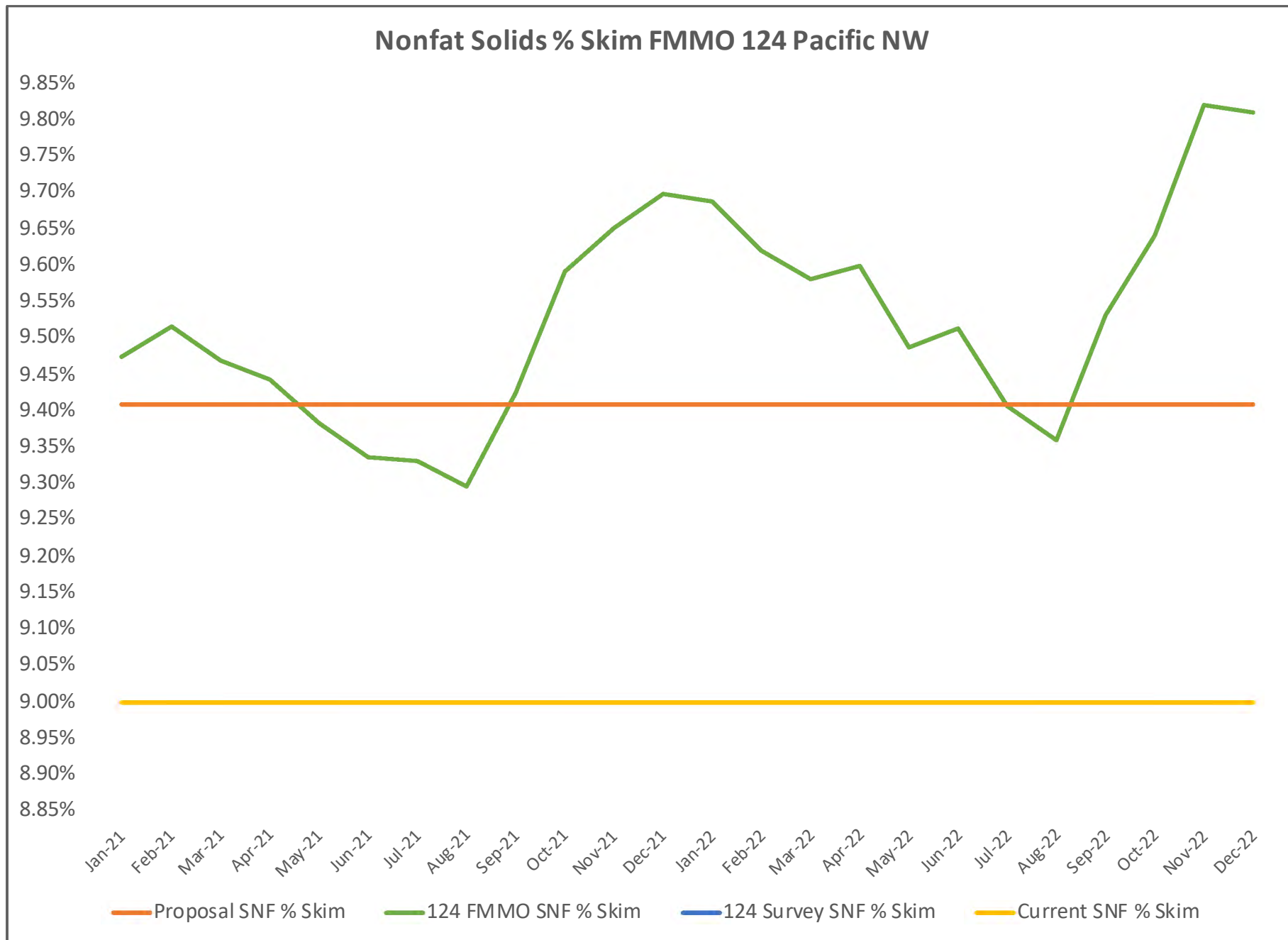
Data Source: USDA Exhibit 17 Component Tests in Producer Milk by Order;
Fluid Milk Plant Survey



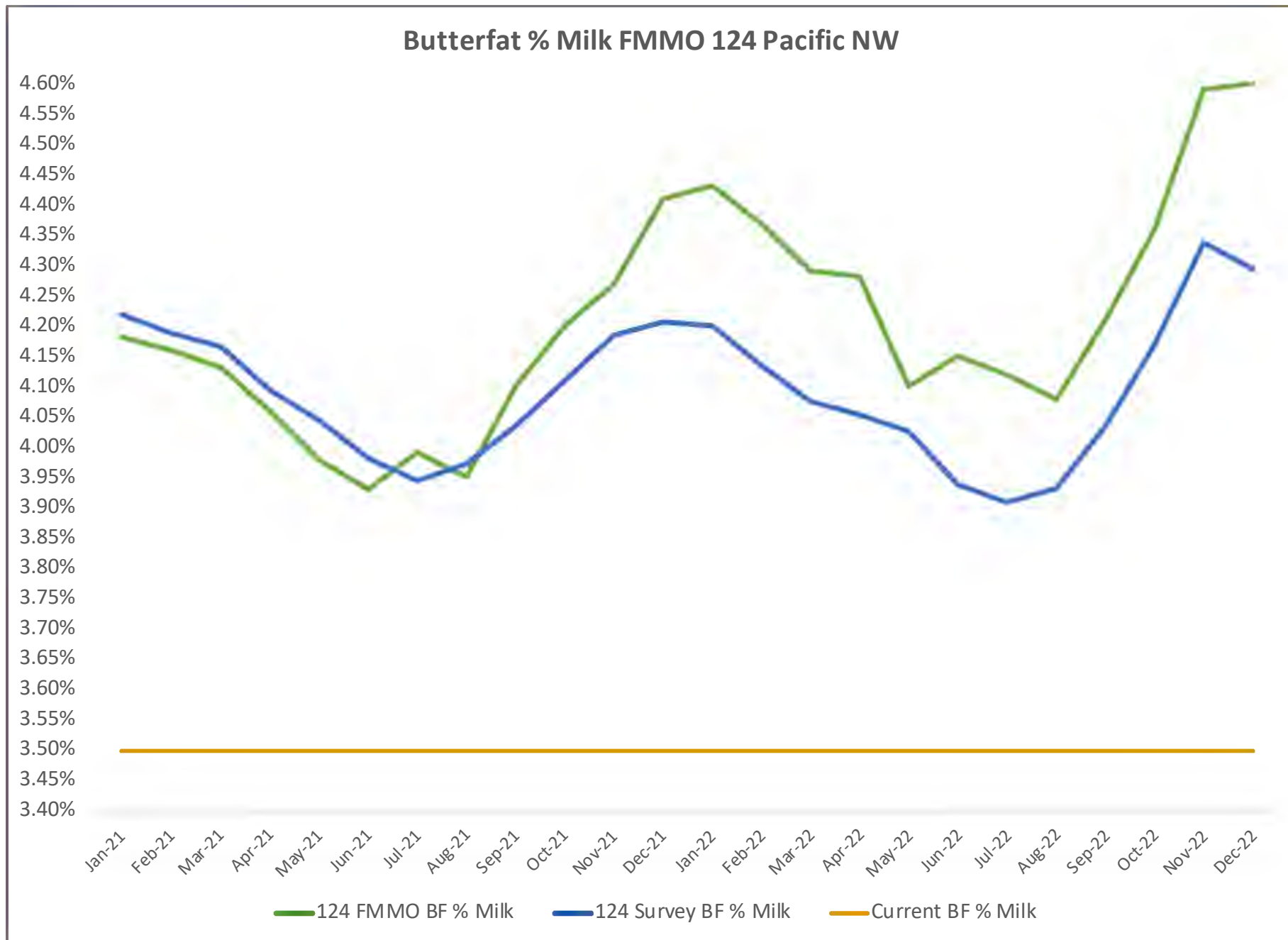
Data Source: USDA Exhibit 17 Component Tests in Producer Milk by Order;
Fluid Milk Plant Survey



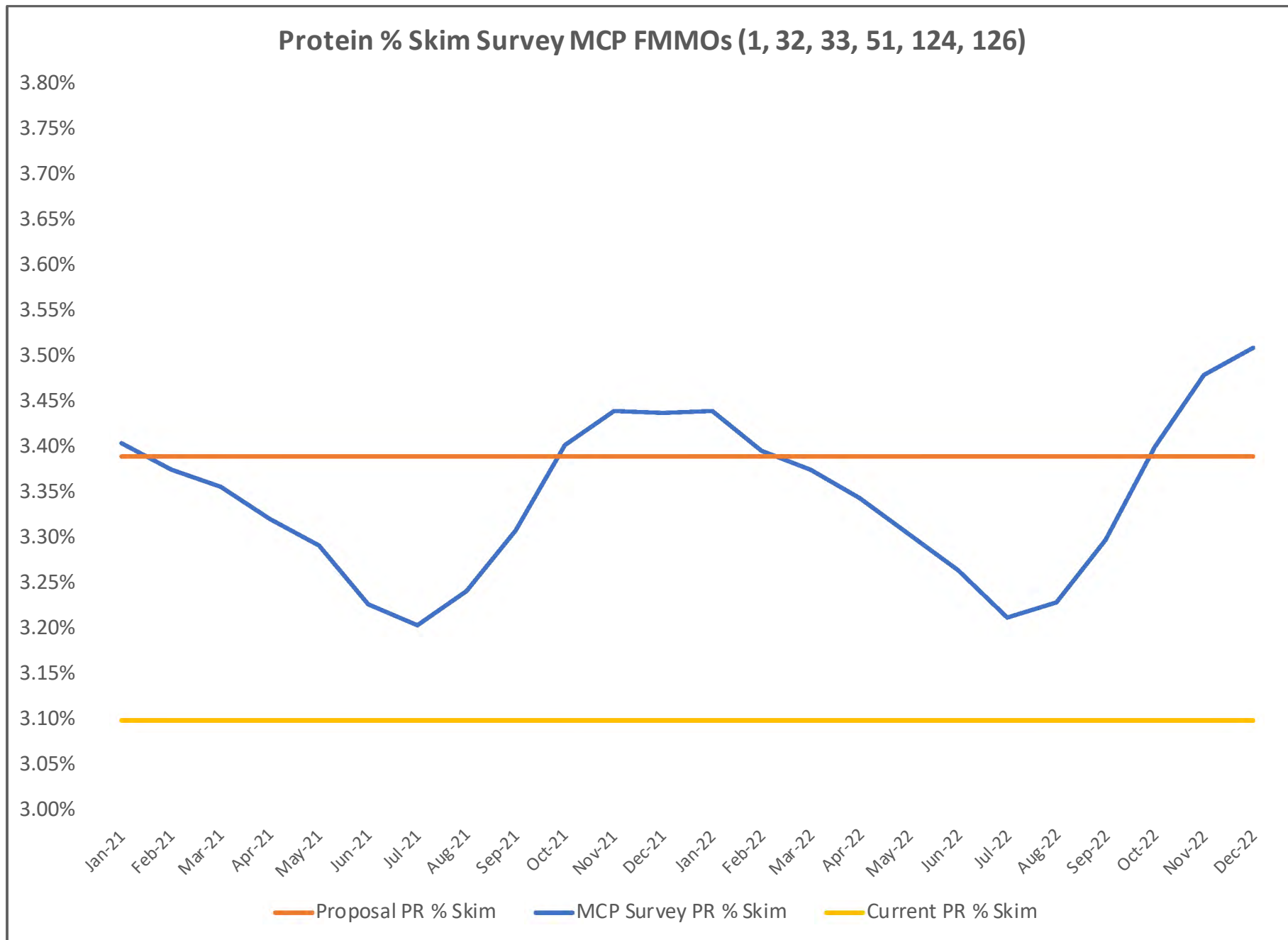
Data Source: USDA Exhibit 17 Component Tests in Producer Milk by Order;
Fluid Milk Plant Survey

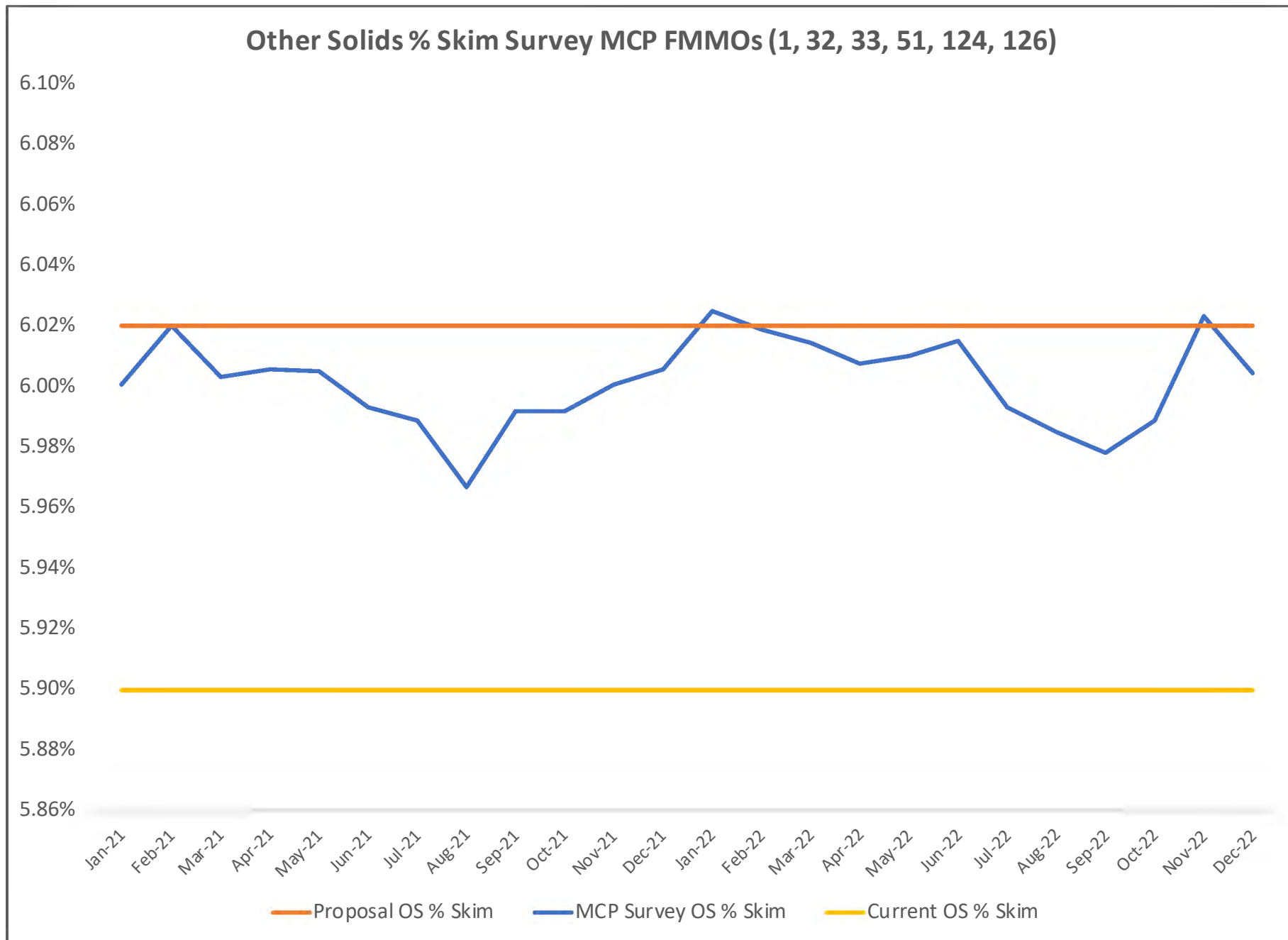


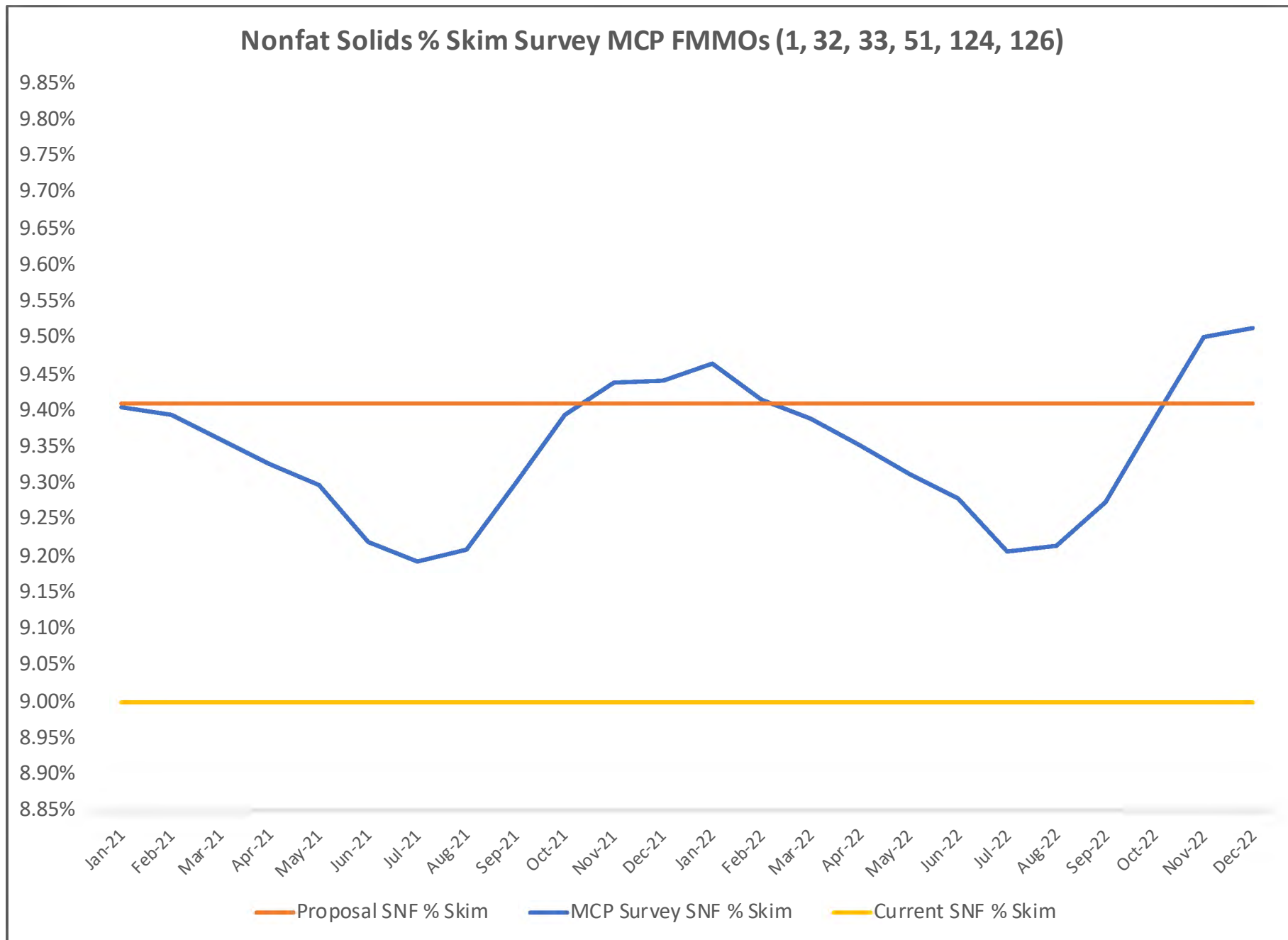
Data Source: USDA Exhibit 17 Component Tests in Producer Milk by Order;
Fluid Milk Plant Survey



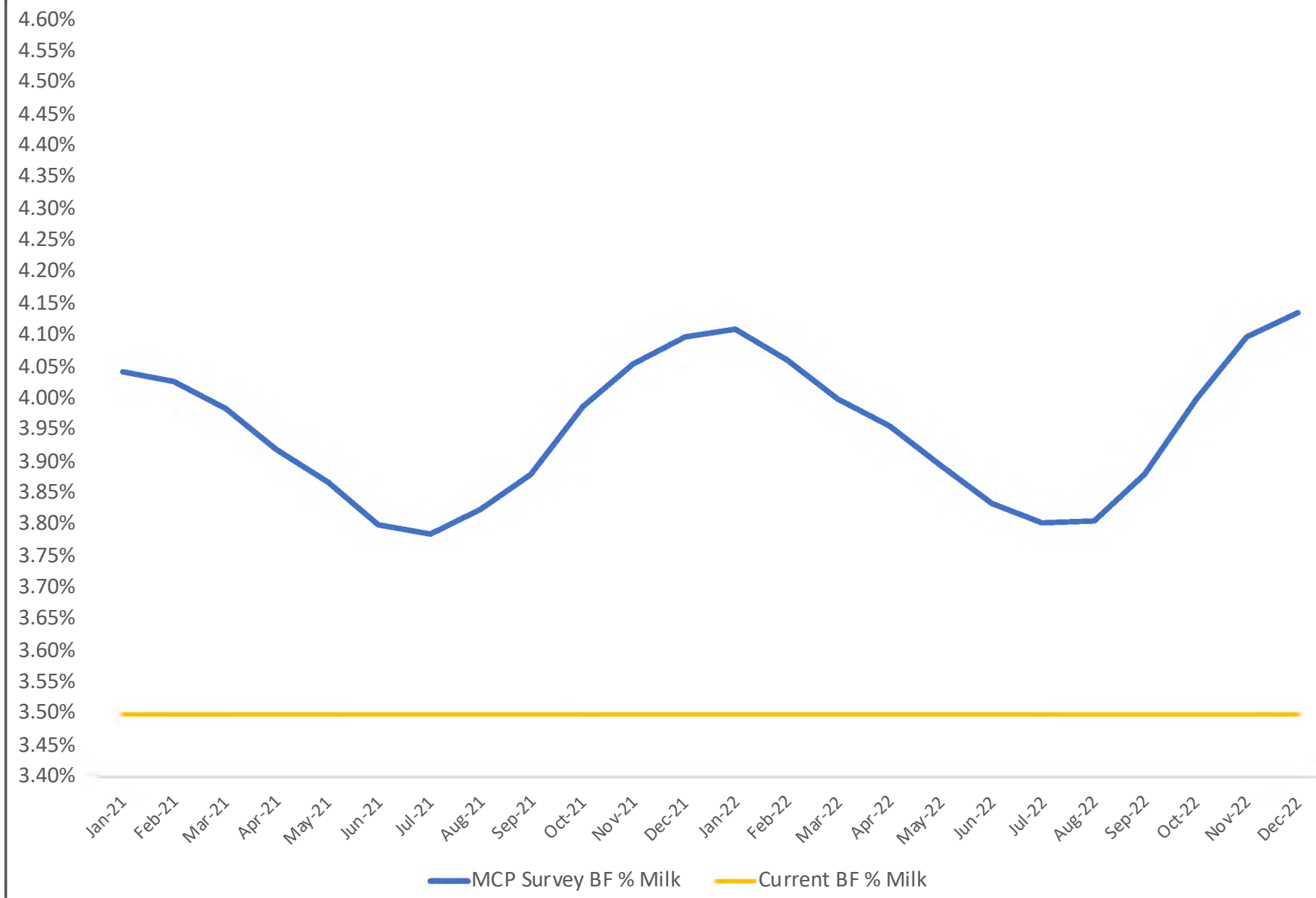
Data Source: USDA Exhibit 17 Component Tests in Producer Milk by Order;
Fluid Milk Plant Survey

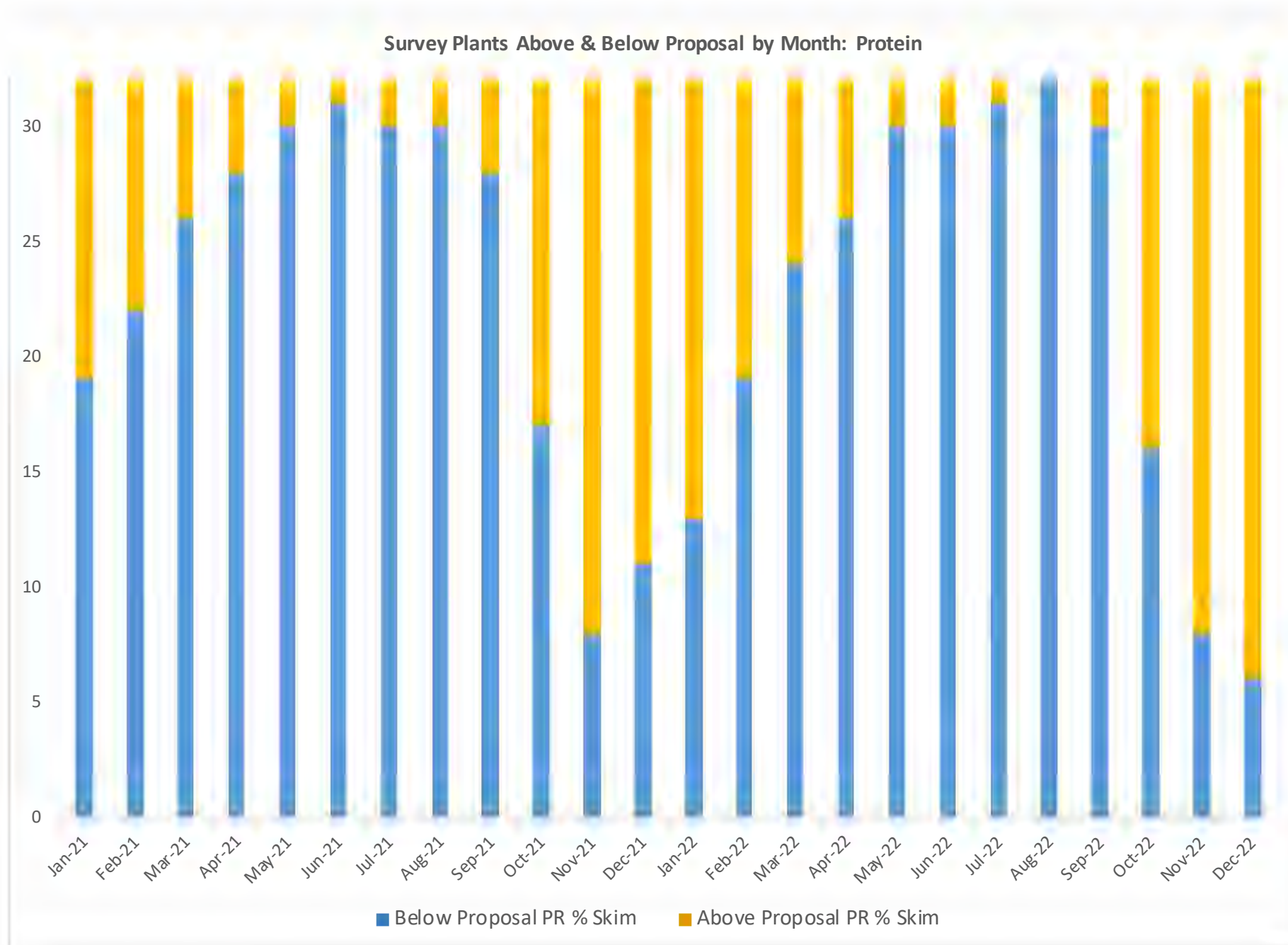


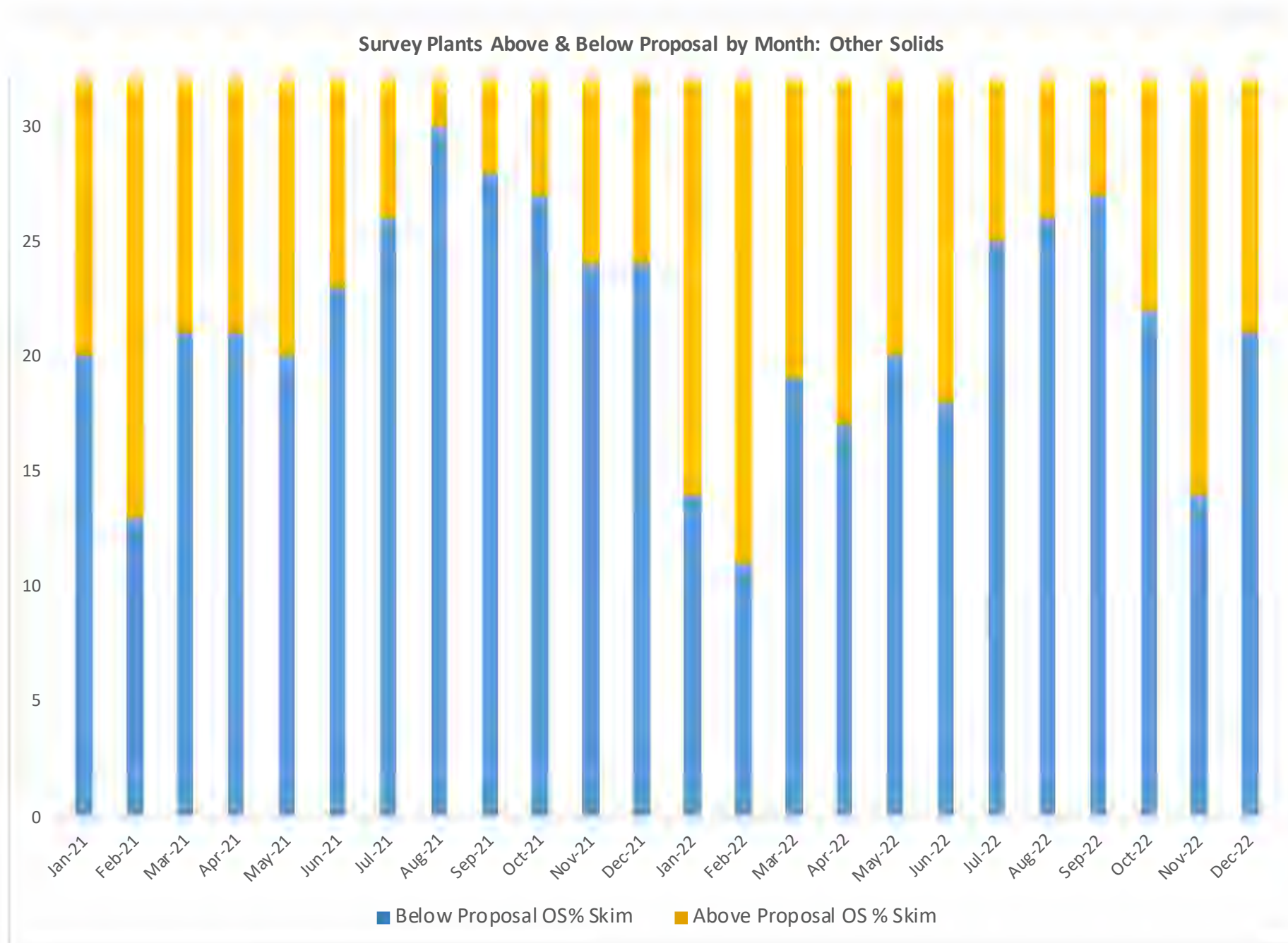


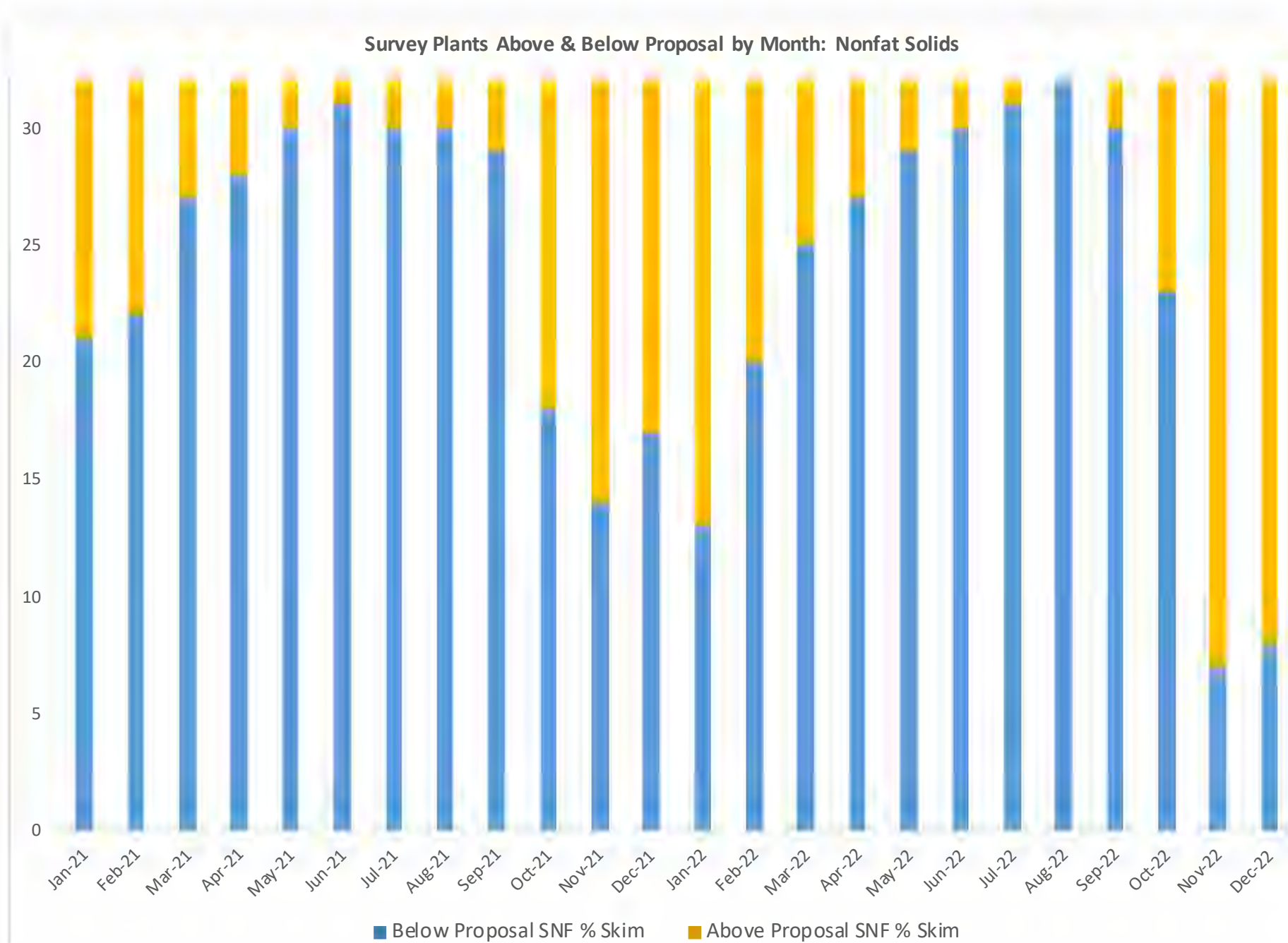


Butterfat % Milk Survey MCP FMMOs (1, 32, 33, 51, 124, 126)









MIG / IDFA Fluid Plant Component Survey Plants

Plant	City	State	FMMO	BF PR OS	BF Only
Albertsons	Hatfield	PA	1	x	
Danone	Mt Crawford	VA	1	x	
Hood	Agawam	MA	1	x	
Hood	Barre	VT	1	x	
Hood	Batavia	NY	1	x	
Hood	Concord	NH	1	x	
Hood	Oneida	NY	1	x	
Hood	Philadelphia	PA	1	x	
Hood	Portland	ME	1	x	
Hood	Winchester	VA	1	x	
Kroger	Winchester	KY	5	x	
Shamrock	Verona	VA	5		x
Kroger	Murfreesboro	TN	7		x
AE Dairy	Des Moines	IA	32	x	
Albertsons	Denver	CO	32	x	
Aurora	Columbia	MO	32	x	
Aurora	Platteville	CO	32	x	
Kroger	Denver	CO	32	x	
Turner	Pittsburgh	PA	33	x	
Albertsons	City of Commerce	CA	51	x	
Albertsons	San Leandro	CA	51	x	
Crystal	Modesto	CA	51	x	
Danone	City of Industry	CA	51	x	
Hood	Sacramento	CA	51	x	
Kroger	Riverside	CA	51	x	
Shehadey	Fairfield	CA	51	x	
Shehadey	Fresno	CA	51	x	
Shehadey	Reno	NV	51	x	
Albertsons	Bellevue	WA	124	x	
Albertsons	Clackamas	OR	124	x	
Kroger	Portland	OR	124	x	
Shehadey	Roseburg	OR	124	x	
Danone	Dallas	TX	126	x	
Kroger	Ft Worth	TX	126	x	
Kroger	Tolleson	AZ	131		x
Shamrock	Phoenix	AZ	131		x

Description	Count (n)
Plant Survey	36
Plants with BF, PR & OS Data Available	32
Plants with only BF Data Available	4
FMMO 1 (Northeast)	10
FMMO 5 (Appalachian)	2
FMMO 6 (Florida)	0
FMMO 7 (Southeast)	1
FMMO 30 (Upper Midwest)	0
FMMO 32 (Central)	5
FMMO 33 (Mideast)	1
FMMO 51 (California)	9
FMMO 124 (Pacific Northwest)	4
FMMO 126 (Southwest)	2
FMMO 131 (Arizona)	2