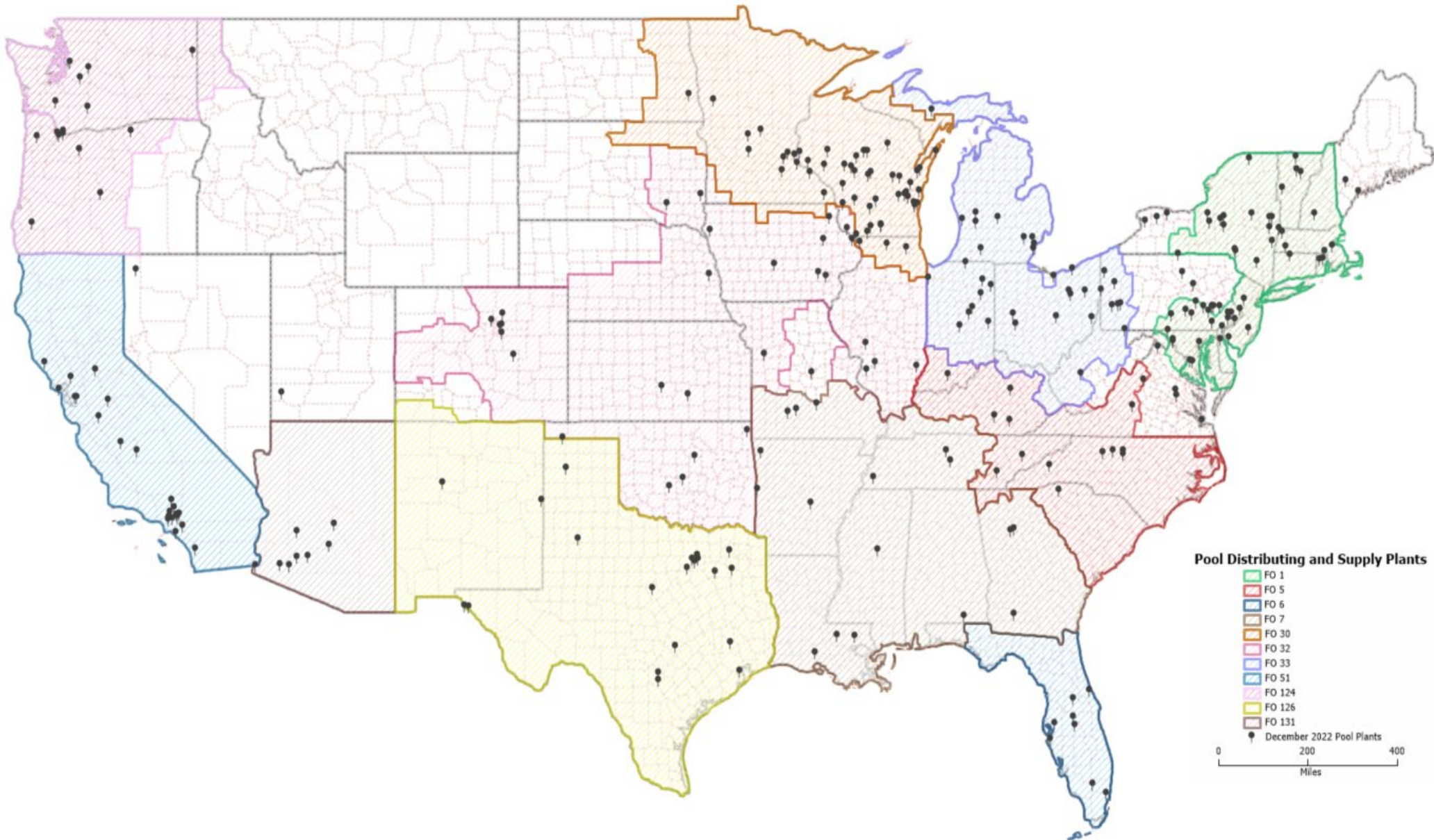
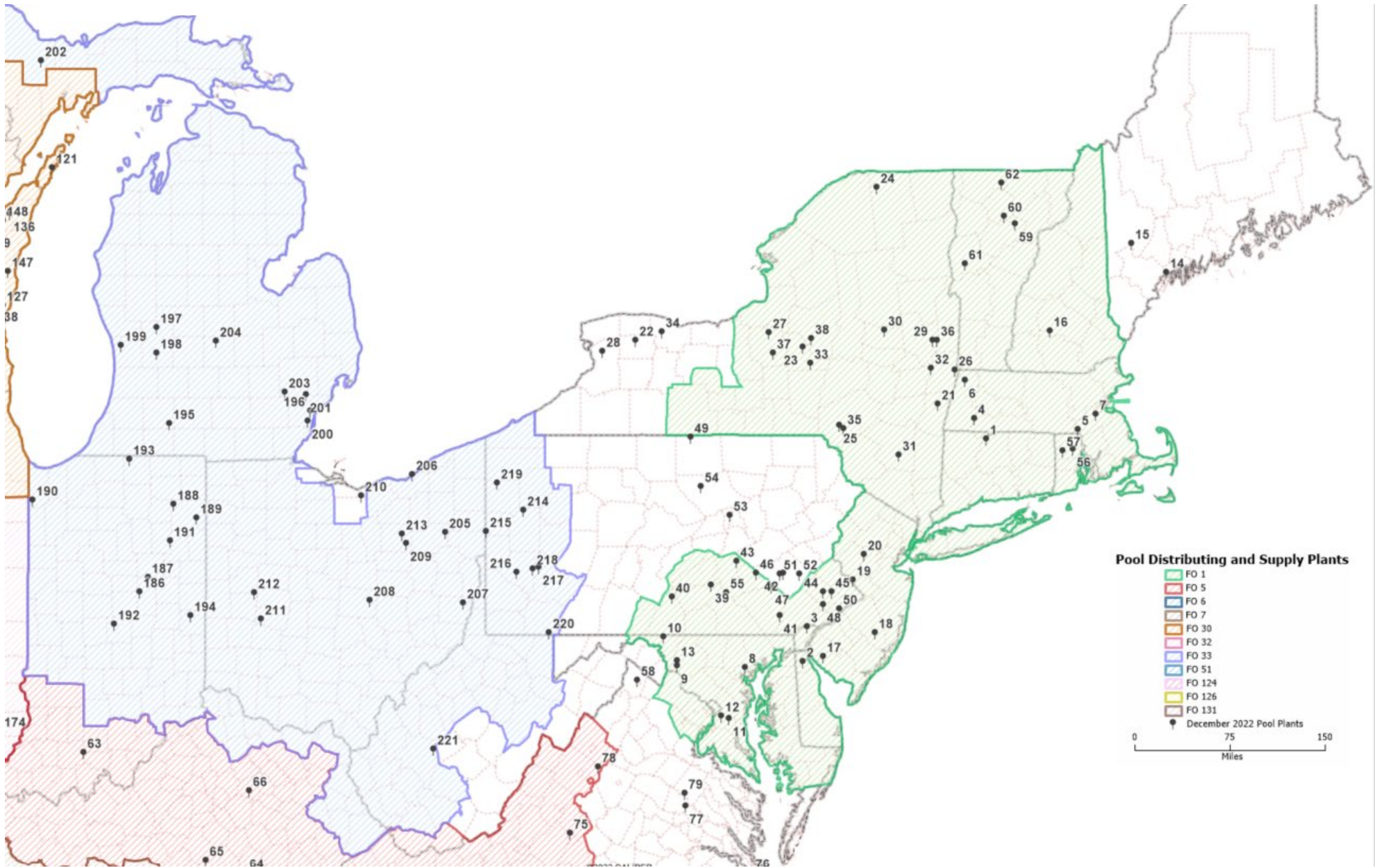


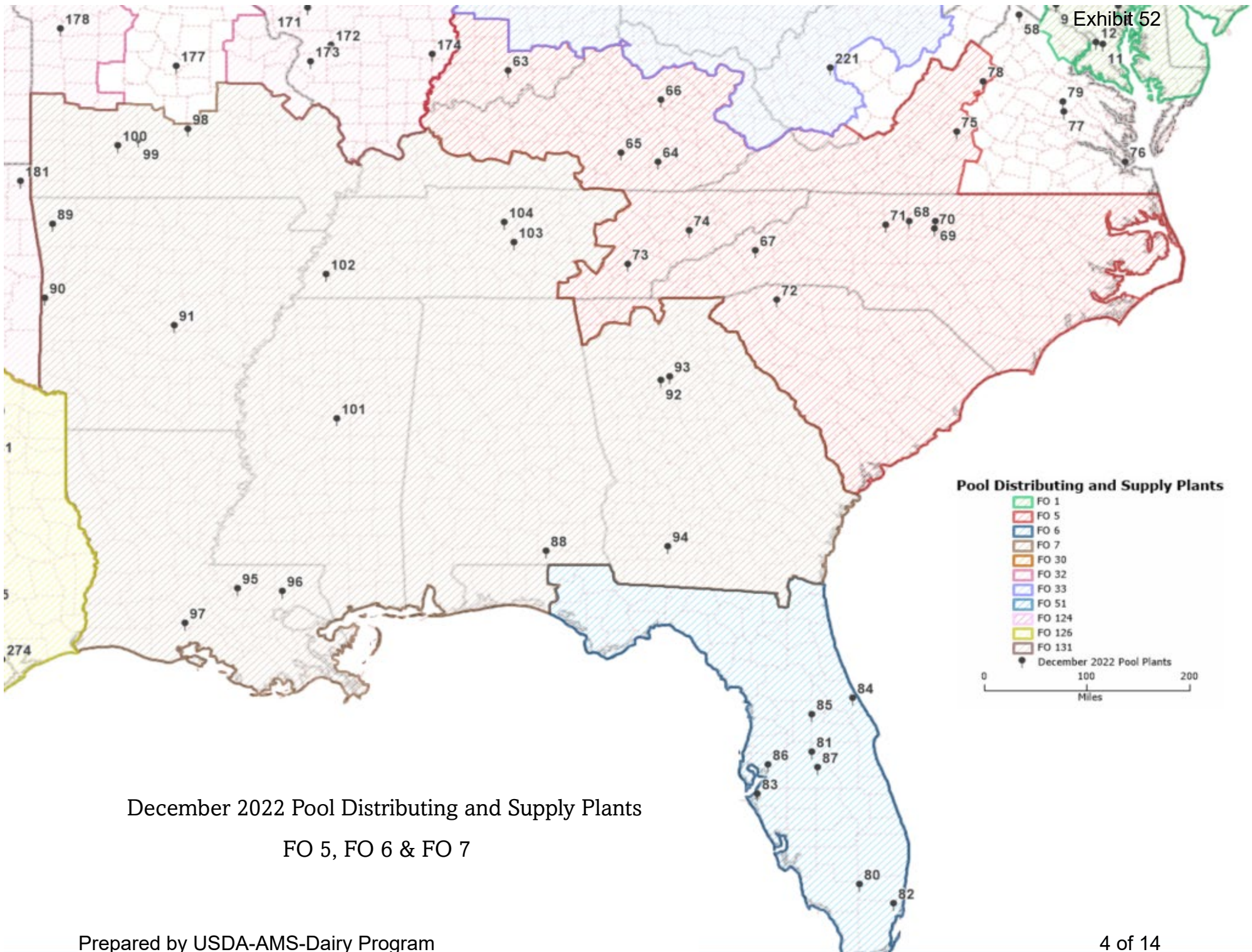
Pool Distributing and Supply Plants by Order – December 2022

Maps Prepared by USDA – AMS – Dairy Program



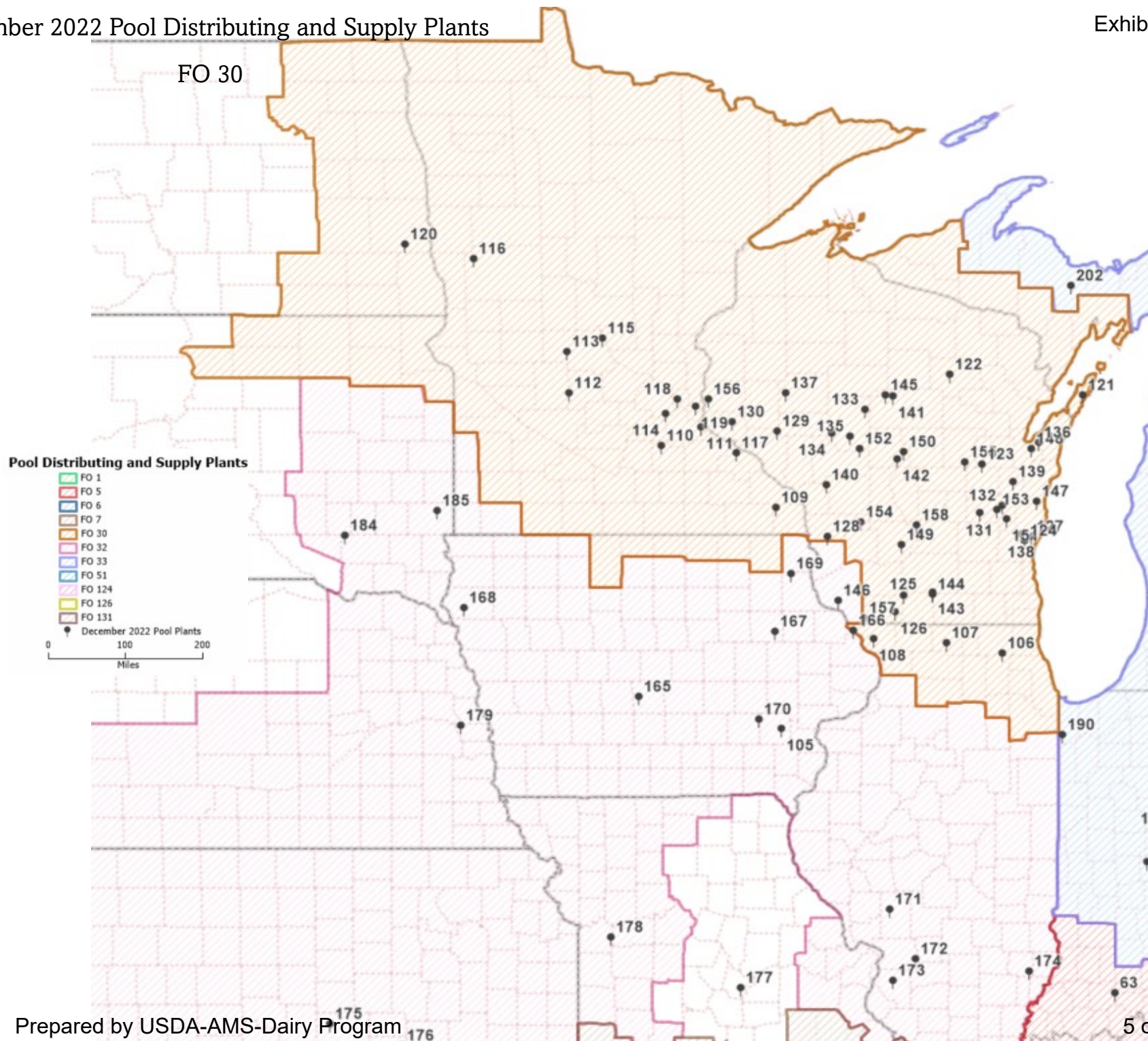
FO 1 & FO 33



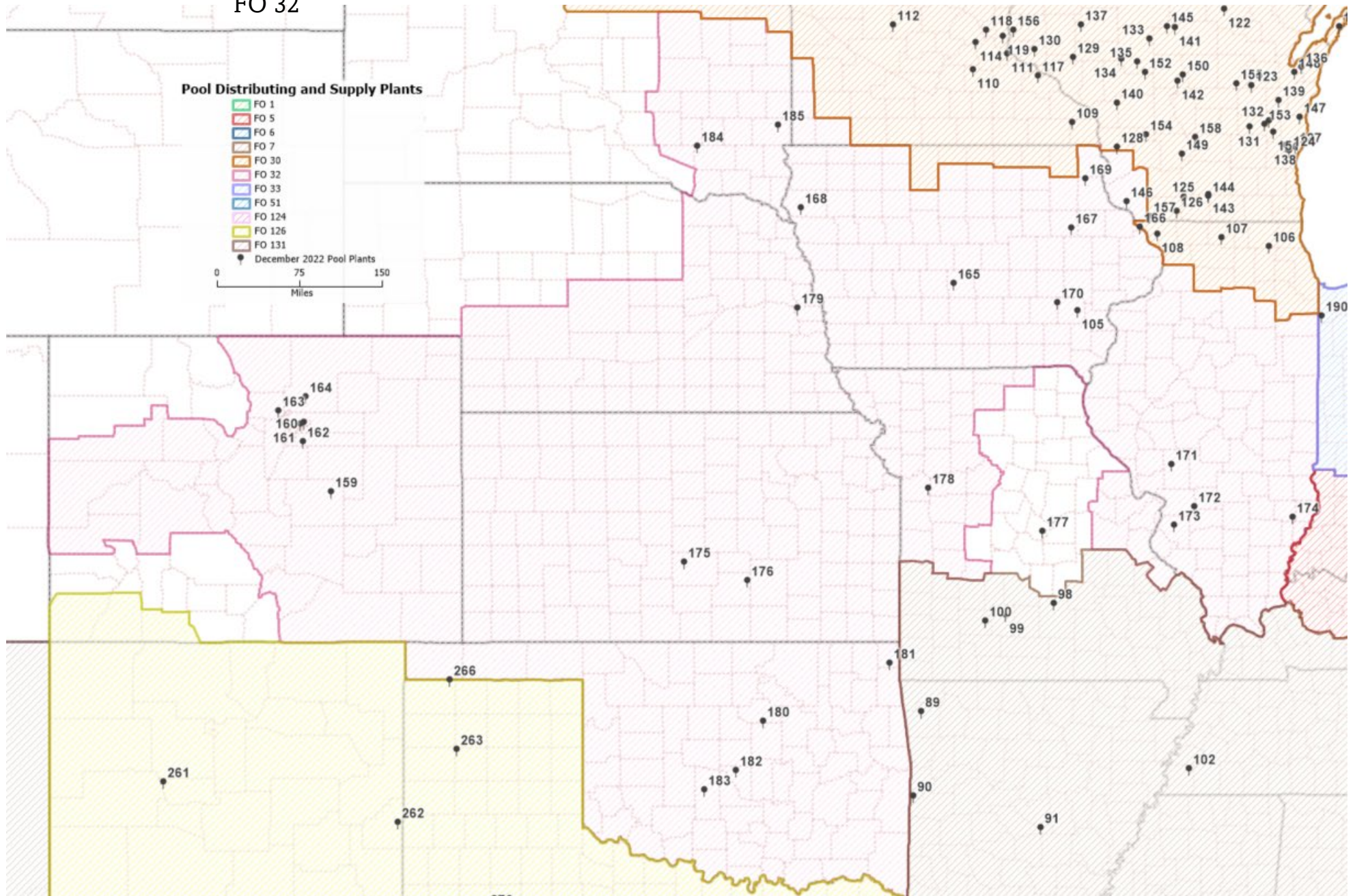


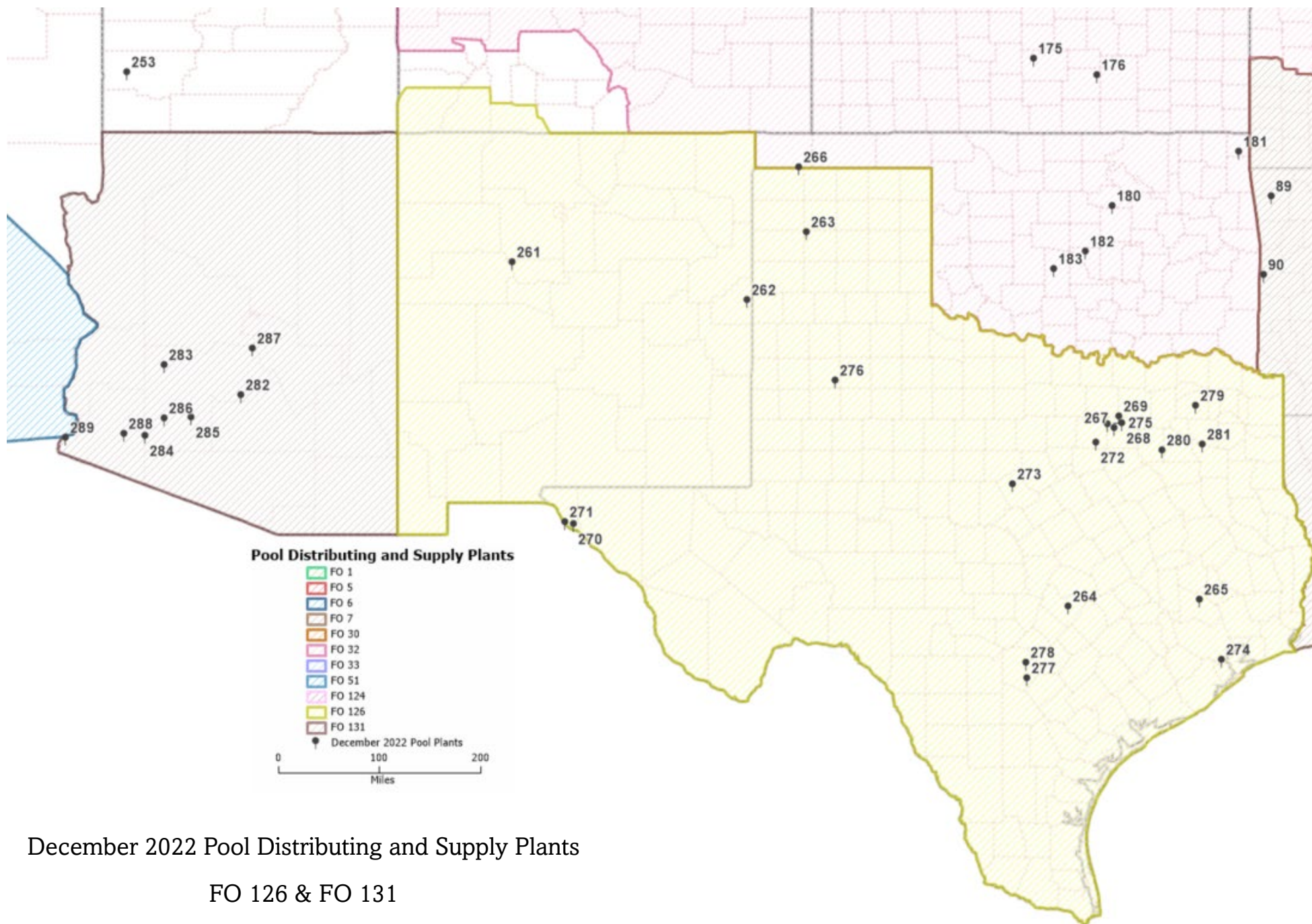
December 2022 Pool Distributing and Supply Plants

FO 5, FO 6 & FO 7



FO 32

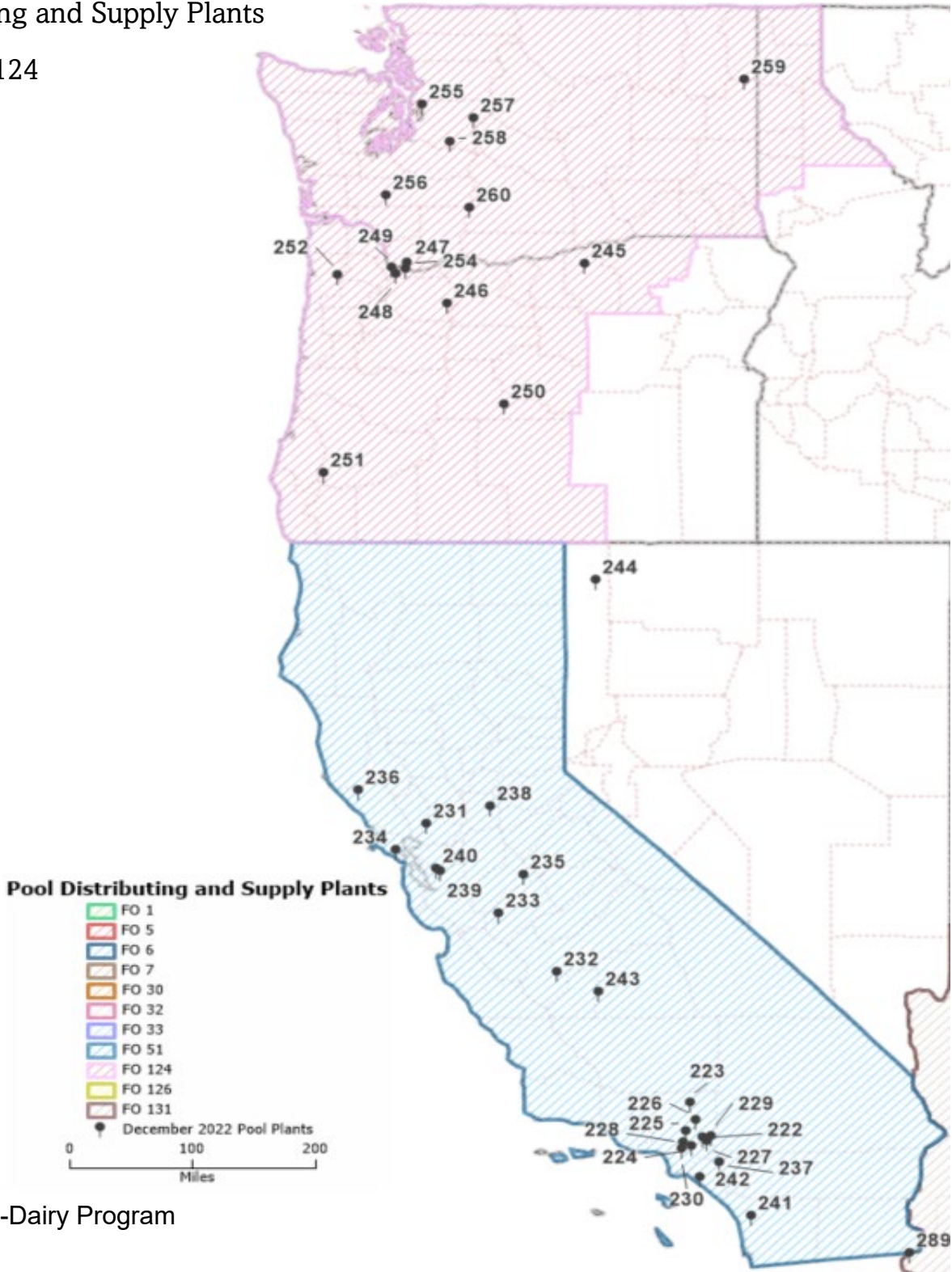




December 2022 Pool Distributing and Supply Plants

FO 126 & FO 131

FO 51 & FO 124



LEGEND PLANT NAME	PLANT CITY	STATE	FIPS	FO
1 Guida-Seibert Dairy Co.	New Britain	CT	09003	1
2 Natural Dairy Products	Newark	DE	10003	1
3 Hy-Point Dairy Farms, Inc.	Wilmington	DE	10003	1
4 HP Hood Llc	Agawam	MA	25013	1
5 Garelick Farms, Llc	Franklin	MA	25021	1
6 High Lawn Farm	Lee	MA	25003	1
7 Crescent Ridge Dairy, Inc.	Sharon	MA	25021	1
8 Cloverland Farms Dairy	Baltimore	MD	24510	1
9 Dairy Maid Dairy, Inc.	Frederick	MD	24021	1
10 Lanco-Pennland Quality Milk Producers	Hancock	MD	24043	1
11 Marva Maid Dairy	Landover	MD	24033	1
12 Maryland And Virginia Milk Producers Cooper	Laurel	MD	24033	1
13 South Mountain Creamery, L.L.C.	Middletown	MD	24021	1
14 Hp Hood Llc	Portland	ME	23005	1
15 Oakhurst Dairy	Portland	ME	23005	1
16 Hp Hood Llc	Concord	NH	33013	1
17 Cumberland Dairy, Inc.	Bridgeton	NJ	34011	1
18 Garelick Farms, Llc	Florence	NJ	34005	1
19 Halo Farm, Inc.	Trenton	NJ	34021	1
20 Mill Road Dairy	Whitehouse	NJ	34019	1
21 Ronnybrook Farm Dairy, Inc.	Ancramdale	NY	36021	1
22 Hp Hood Llc	Batavia	NY	36037	1
23 Queensboro Farm Products, Inc.	Canastota	NY	36053	1
24 Agri-Mark, Inc.	Chateaugay	NY	36033	1
25 Saputo Dairy Foods Usa, Llc	Delhi	NY	36025	1
26 Garelick Farms, Llc	E. Greenbush	NY	36083	1
27 Ultra Dairy, Llc	East Syracuse	NY	36067	1
28 Steuben Foods, Incorporated	Elma	NY	36029	1
29 Stewarts Shops Corporation	Greenfield	NY	36091	1
30 Westmeadow Creamery	Johnstown	NY	36035	1
31 Hudson Valley Fresh Bottling Company	Kingston	NY	36111	1
32 Midland Farms, Inc.	Menands	NY	36001	1
33 Hp Hood Llc	Oneida	NY	36053	1
34 Upstate Niagara Cooperative, Inc.	Rochester	NY	36055	1
35 Worcester Creameries Corp.	Roxbury	NY	36025	1
36 King Brothers Dairy	Schuylerville	NY	36091	1
37 Upstate Farms Dairy, Llc	Syracuse	NY	36067	1
38 Hp Hood Llc	Vernon	NY	36065	1
39 Land O'Lakes, Inc.	Carlisle	PA	42041	1
40 Trickling Springs Creamery	Chambersburg	PA	42055	1
41 Turkey Hill Dairy, Inc.	Conestoga	PA	42071	1
42 Gw Packaging	Douglassville	PA	42011	1
43 Harrisburg Dairies Inc	Harrisburg	PA	42043	1
44 Lucerne Dairy	Hatfield	PA	42091	1
45 Lehigh Valley Dairies, Inc.	Lansdale	PA	42091	1
46 Swiss Premium Dairy	Lebanon	PA	42075	1
47 Noah W Kreider & Sons, Llp	Manheim	PA	42071	1
48 Wawa Dairy Farms	Media	PA	42045	1
49 Dairy Farmers Of America, Inc.	Middlebury Cente	PA	42117	1
50 Crowley Foods Division Of Hop Hood Llc	Philadelphia	PA	42101	1
51 Clover Farms Dairy Company	Reading	PA	42011	1
52 Dairy Farmers Of America, Inc.	Reading	PA	42011	1

53 Dutch Valley Food Company, Inc.	Sunbury	PA	42097	1
54 Valley Farms Dairy	Williamsport	PA	42081	1
55 Rutter Bros. Dairy, Inc.	York	PA	42133	1
56 Munroe Dairy Llc	East Providence	RI	44007	1
57 Wright'S Dairy Farm, Inc.	North Smithfield	RI	44007	1
58 Hp Hood Llc	Winchester	VA	51840	1
59 Hp Hood Llc	Barre	VT	50023	1
60 Agri-Mark, Inc.	Cabot	VT	50023	1
61 Agri-Mark, Inc.	Middlebury	VT	50001	1
62 St Albans Creamery, Llc	St. Albans	VT	50011	1
63 Prairie Farms	Holland	IN	18037	5
64 New Dairy Ky, Llc	London	KY	21125	5
65 Prairie Farms	Somerset	KY	21199	5
66 Winchester	Winchester	KY	21049	5
67 Milkco, Inc.	Asheville	NC	37021	5
68 Dairy Fresh, Llc - Hp	High Point	NC	37081	5
69 Maola, Llc	High Point	NC	37081	5
70 Homeland Creamery	Julian	NC	37081	5
71 Dairy Fresh, Llc - Ws	Winston-Salem	NC	37067	5
72 Pet Dairy	Spartanburg	SC	45083	5
73 Mayfield Dairy Farms, Inc.	Athens	TN	47107	5
74 Broadacre Dairies	Powell	TN	47093	5
75 Westover	Lynchburg	VA	51680	5
76 Marva Maid Dairy	Newport News	VA	51700	5
77 Valley Milk	Strasburg	VA	51085	5
78 Shamrock	Verona	VA	51015	5
79 Homestead Creamery	Wirtz	VA	51033	5
80 Publix Supermarkets	Deerfield Beach	FL	12011	6
81 Publix Supermarkets	Lakeland	FL	12105	6
82 Mcarthur Next	Miami	FL	12086	6
83 Dakin Dairy	Myakka City	FL	12081	6
84 T.G. Lee Foods, Inc.	Orange City	FL	12127	6
85 T.G. Lee Foods, Inc.	Orlando	FL	12095	6
86 M & B Of Tampa	Tampa	FL	12057	6
87 New Dairy Florida	Winter Haven	FL	12105	6
88 Venture Milk	Solocomb	AL	01061	7
89 Hiland Dairy	Fayetteville	AR	05143	7
90 Hiland Dairy	Fort Smith	AR	05131	7
91 Hiland Dairy	Little Rock	AR	05119	7
92 Centennial Farms	Atlanta	GA	13089	7
93 Publix Supermarkets Inc	Atlanta	GA	13135	7
94 Smi Ultra Filtration Plant	Baconton	GA	13205	7
95 Kleinpeter Farms Dairy Inc	Baton Rouge	LA	22033	7
96 Eastside Jersey Dairy	Hammond	LA	22105	7
97 New Dairy Texas, Llc	Lafayette	LA	22055	7
98 Dairy Farmers Of America Inc	Cabool	MO	29215	7
99 Memory Lane Dairy	Fordland	MO	29225	7
100 Hiland Dairy	Springfield	MO	29077	7
101 Prairie Farms Dairy	Kosciusko	MS	28007	7
102 Hiland Dairy	Memphis	TN	47157	7
103 Heritage Farms Dairy	Murfreesboro	TN	47149	7
104 Purity Dairies Inc	Nashville	TN	47037	7
105 Kalona Farms	Kalona	IA	19183	30

106 Oberweis Dairy Inc.	North Aurora	IL	17089	30
107 Prairie Farms Dairy, Inc	Rockford	IL	17201	30
108 Brewster Cheese Company	Stockton	IL	17085	30
109 Land O'Lakes Inc.	Caledonia	MN	27055	30
110 Prairie Farms Dairy, Inc	Faribault	MN	27131	30
111 Hastings Creamery Llc	Hastings	MN	27037	30
112 First District Association, The	Litchfield	MN	27093	30
113 Land O'Lakes Inc.	Melrose	MN	27145	30
114 Kemps Llc	Minneapolis	MN	27053	30
115 Associated Milk Producers Inc.	Paynesville	MN	27145	30
116 Bongards' Creameries	Perham	MN	27111	30
117 Plainview Milk Products Cooperative	Plainview	MN	27157	30
118 St. Paul Beverage Solutions	St. Paul	MN	27123	30
119 East Side Jersey Dairy Inc.	Woodbury	MN	27163	30
120 Kemps Llc	Fargo	ND	38017	30
121 Rosewood Dairy Inc.	Algoma	WI	55029	30
122 Sartori Company	Antigo	WI	55067	30
123 Lamers Dairy Inc.	Appleton	WI	55087	30
124 Cedar Valley Cheese Inc.	Belgium	WI	55089	30
125 Decature Dairy, Inc.	Broadhead	WI	55045	30
126 Chula Vista Cheese Co.	Browntown	WI	55065	30
127 Kemps Llc	Cedarburg	WI	55089	30
128 Cooperative Regions Of Organic Producer Pools	Chaseburg	WI	55123	30
129 Eau Galle Cheese Factory Llc	Durand	WI	55091	30
130 Ellsworth Cooperative Creamery	Ellsworth	WI	55093	30
131 Dairy Farmers Of America Inc.	Fond Du Lac	WI	55039	30
132 Nfo Inc.	Fond Du Lac	WI	55039	30
133 Lynn Dairy, Inc.	Granton	WI	55019	30
134 Grassland Dairy Products Inc.--Fairground	Greenwood	WI	55019	30
135 Grassland Dairy Products Inc.--Main Street	Greenwood	WI	55019	30
136 Arla Foods Production Llc	Hollandtown	WI	55009	30
137 Associated Milk Producers Inc.	Jim Falls	WI	55017	30
138 Farmfirst Dairy Cooperative	Kewaskum	WI	55131	30
139 Land O'Lakes Inc.	Kiel	WI	55015	30
140 Kwik Trip Inc.	La Crosse	WI	55063	30
141 Mullins Cheese Inc.	Marshfield	WI	55073	30
142 Nasonville Dairy Inc.	Marshfield	WI	55141	30
143 Klondike Cheese Company	Monroe	WI	55045	30
144 Rolling Hills Dairy Producers Cooperative	Monticello	WI	55045	30
145 Mullins Cheese Inc.	Mosinee	WI	55073	30
146 Scenic Central Milk Producers Cooperative Association	Muscoda	WI	55043	30
147 Sartori Company	Plymouth	WI	55117	30
148 Belgioioso Cheese Inc.	Pulaski	WI	55009	30
149 Foremost Farms Usa Cooperative	Reedsburg	WI	55111	30
150 Wisconsin Dairy State Cheese Company Inc.	Rudolph	WI	55141	30
151 Baker Cheese Factory, Llc	St. Cloud	WI	55039	30
152 Lagrander'S Hillside Dairy Inc.	Stanley	WI	55019	30
153 Saputo Cheese Usa Inc.	Waupun	WI	55039	30
154 Westby Cooperative Creamery	Westby	WI	55123	30
155 Agropur Inc.	Weyauwega	WI	55135	30
156 Burnett Dairy Coop	Wilson	WI	55109	30
157 Zimmerman Cheese, Inc.	Wiotia	WI	55065	30
158 Grande Cheese Company	Wyocena	WI	55021	30

159 Sinton Dairy Foods Co, Llc	Colorado Springs	CO	08041	32
160 Kroger Mountain View Foods	Denver	CO	08031	32
161 Safeway Stores, Inc.	Denver	CO	08031	32
162 Meadow Gold	Englewood	CO	08005	32
163 Royal Crest Dairy, Inc.	Longmont	CO	08013	32
164 Aurora Organic Dairy	Platteville	CO	08123	32
165 Anderson-Erickson Dairy Co	Des Moines	IA	19153	32
166 Prairie Farms Dairy Inc.	Dubuque	IA	19061	32
167 Dairy Farmers Of America Inc.	Independence	IA	19019	32
168 Dean Dairy	Le Mars	IA	19149	32
169 Prairie Farms Dairy Inc	Luana	IA	19043	32
170 Farmers' All Natural Creamery	Wellman	IA	19183	32
171 Prairie Farms Dairy Inc.	Carlinville	IL	17117	32
172 Prairie Farms Dairy Inc.	Granite City	IL	17119	32
173 East Side Jersey	O Fallon	IL	17163	32
174 Prairie Farms Dairy Inc.	Olney	IL	17159	32
175 Jackson Dairy	Hutchinson	KS	20155	32
176 Hiland Dairy Foods Co, Llc	Wichita	KS	20173	32
177 Central Dairy Co	Jefferson City	MO	29051	32
178 Hiland Dairy Foods Co, Llc	Kansas City	MO	29095	32
179 Hiland Dairy Foods Co, Llc	Omaha	NE	31055	32
180 Hiland Dairy Foods Co, Llc	Chandler	OK	40081	32
181 Central Equity Milk Coop	Fairland	OK	40115	32
182 Hiland Dairy Foods Co, Llc	Norman	OK	40027	32
183 Braum, W.H., Inc.	Tuttle	OK	40051	32
184 Associated Milk Producers Inc.	Freeman	SD	46067	32
185 East Side Jersey	Sioux Falls	SD	46099	32
186 East Side Jersey Dairy, Inc.	Anderson	IN	18095	33
187 Nestle Usa Inc.	Anderson	IN	18095	33
188 Blue Kingfisher, Llc Dbw Walmart	Fort Wayne	IN	18003	33
189 Prairie Farms Dairy, Inc.	Fort Wayne	IN	18003	33
190 Pleasant View Dairy Corp.	Highland	IN	18089	33
191 Schenkel'S Dairy	Huntington	IN	18069	33
192 The Kroger Company	Indianapolis	IN	18097	33
193 Middlebury Cheese Company, Llc	Middlebury	IN	18039	33
194 Richmond Beverage Solutions	Richmond	IN	18177	33
195 Prairie Farms Dairy, Inc.	Battle Creek	MI	26077	33
196 C.F. Burger Creamery	Detroit	MI	26163	33
197 Country Fresh Grand Rapids	Grand Rapids	MI	26081	33
198 Schreiber Foods, Inc.	Grand Rapids	MI	26081	33
199 Meijer Distribution, Inc.	Holland	MI	26139	33
200 Calder Brother'S Dairy, Inc.	Lincoln Park	MI	26163	33
201 Michigan Dairy	Livonia	MI	26163	33
202 Country Fresh Jilbert	Marquette	MI	26103	33
203 Guernsey Farms Dairy	Northville	MI	26125	33
204 Mwc(Michigan), Llc	St. Johns	MI	26037	33
205 Superior Dairy Inc.	Canton	OH	39151	33
206 New Dairy Ohio, Llc	Cleveland	OH	39035	33
207 United Dairy, Inc.	Martins Ferry	OH	39013	33
208 Tamarack Farms	Newark	OH	39089	33
209 Smith Foods, Inc.	Orrville	OH	39169	33
210 Toft Dairy, Inc.	Sandusky	OH	39043	33
211 Reiter Dairy	Springfield	OH	39023	33

212 Meijer Distribution, Inc.	Tipp City	OH	39109	33
213 Hartzler Family Dairy, Inc.	Wooster	OH	39169	33
214 Marburger Farm Dairy	Evans City	PA	42019	33
215 Dairy Farmers Of America, Inc.	New Wilmington	PA	42073	33
216 Pittsburgh Special - T Dairy	Pittsburgh	PA	42003	33
217 Schneider'S Dairy, Inc.	Pittsburgh	PA	42003	33
218 Turner Dairy Farms, Inc.	Pittsburgh	PA	42003	33
219 Dean Dairy Sharpsville	Sharpsville	PA	42085	33
220 United Dairy , Inc.	Uniontown	PA	42051	33
221 United Dairy , Inc.	Charleston	WV	54039	33
222 Rex Creamery	City Of Commerce	CA	06037	51
223 Safeway-Jerseymaid	City Of Commerce	CA	06037	51
224 Alta Dena Certified Dairy (Coi- North)	City Of Industry	CA	06037	51
225 Alta Dena South (Coi- South)	City Of Industry	CA	06037	51
226 Ninth Avenue Foods	City Of Industry	CA	06037	51
227 Whitewave Foods	City Of Industry	CA	06037	51
228 Kroger Compton Creamery	Compton	CA	06037	51
229 Rockview Dairies, Inc.	Downey	CA	06037	51
230 Driftwood Dairy, Inc.	El Monte	CA	06037	51
231 Producers Dairy Foods, Inc.	Fairfield	CA	06095	51
232 Producers Dairy Foods, Inc.	Fresno	CA	06019	51
233 Saputo Dairy Foods Usa, Llc	Gustine	CA	06047	51
234 Straus Family Creamery	Marshall	CA	06041	51
235 Foster Farms	Modesto	CA	06099	51
236 Clover-Stornetta Farms	Petaluma	CA	06097	51
237 Kroger Riverside Creamery	Riverside	CA	06065	51
238 Hp Hood Llc	Sacramento	CA	06067	51
239 Alexandre Family Creamery	San Leandro	CA	06001	51
240 Safeway Inc. Milk Department	San Leandro	CA	06001	51
241 Hollandia Dairy, Inc.	San Marcos	CA	06073	51
242 Stremicks Heritage Foods	Santa Ana	CA	06059	51
243 Rosa Brothers Milk Co.	Tulare	CA	06107	51
244 Model Dairy - Producers	Reno	NV	32031	51
245 Columbia River Processing, Inc.	Boardman	OR	41049	124
246 Safeway Stores, Inc.	Clackamas	OR	41005	124
247 Alpenrose Dairy, Inc.	Portland	OR	41051	124
248 Darigold, Inc.	Portland	OR	41051	124
249 The Kroger Co., Swan Island Dairy	Portland	OR	41051	124
250 Eberhard Creamery, Inc.	Redmond	OR	41017	124
251 Umpqua Dairy Products Co., Inc.	Roseburg	OR	41019	124
252 Tillamook County Creamery Association	Tillamook	OR	41057	124
253 Western Quality Foods	Cedar City	UT	49021	124
254 Andersen Dairy, Inc.	Battle Ground	WA	53011	124
255 Safeway Stores, Inc.	Bellevue	WA	53033	124
256 Darigold, Inc.	Chehalis	WA	53041	124
257 Smith Brothers Farms, Inc.	Kent	WA	53033	124
258 Darigold, Inc.	Seattle	WA	53033	124
259 Darigold, Inc.	Spokane	WA	53063	124
260 Darigold, Inc.	Sunnyside	WA	53077	124
261 Creamland Dairy	Albuquerque	NM	35001	126
262 Gsa-Southwest Cheese	Clovis	NM	35009	126
263 Plains Dairy Products	Amarillo	TX	48375	126
264 Hiland Dairy Foods Co., Llc	Austin	TX	48453	126

265 Hiland Dairy Foods Co., Llc	Conroe	TX	48339	126
266 Lone Star Milk Producers, L.C.	Dalhart	TX	48111	126
267 Hiland Dairy Foods Co., Llc	Dallas	TX	48113	126
268 Oak Farms	Dallas	TX	48113	126
269 Whitewave Foods	Dallas	TX	48113	126
270 Gh Dairy	El Paso	TX	48141	126
271 Prices	El Paso	TX	48141	126
272 Vandervoort'S	Ft. Worth	TX	48439	126
273 Volleman Dairy Processing, Llc	Gustine	TX	48093	126
274 H. E. Butt - H. R. S. C.	Houston	TX	48201	126
275 Oak Farms	Houston	TX	48113	126
276 Gandy'S	Lubbock	TX	48303	126
277 H. E. Butt Grocery Co.	San Antonio	TX	48029	126
278 Oak Farms	San Antonio	TX	48029	126
279 Saputo Dairy Foods Usa, Llc	Sulphur Springs	TX	48223	126
280 1836 Farms	Terrell	TX	48257	126
281 Hiland Dairy Foods Co., Llc	Tyler	TX	48423	126
282 Fairlife, Llc	Goodyear	AZ	04013	131
283 Danzeisen Dairy, Llc	Laveen	AZ	04013	131
284 Shamrock Foods Company	Phoenix	AZ	04013	131
285 Safeway Stores, Inc.	Tempe	AZ	04013	131
286 United Dairymen Of Arizona	Tempe	AZ	04013	131
287 The Kroger Co., Tolleson Dairy	Tolleson	AZ	04013	131
288 Gh Processing	Yuma	AZ	04027	131
289 Sarah Farms	Yuma	AZ	04027	131