

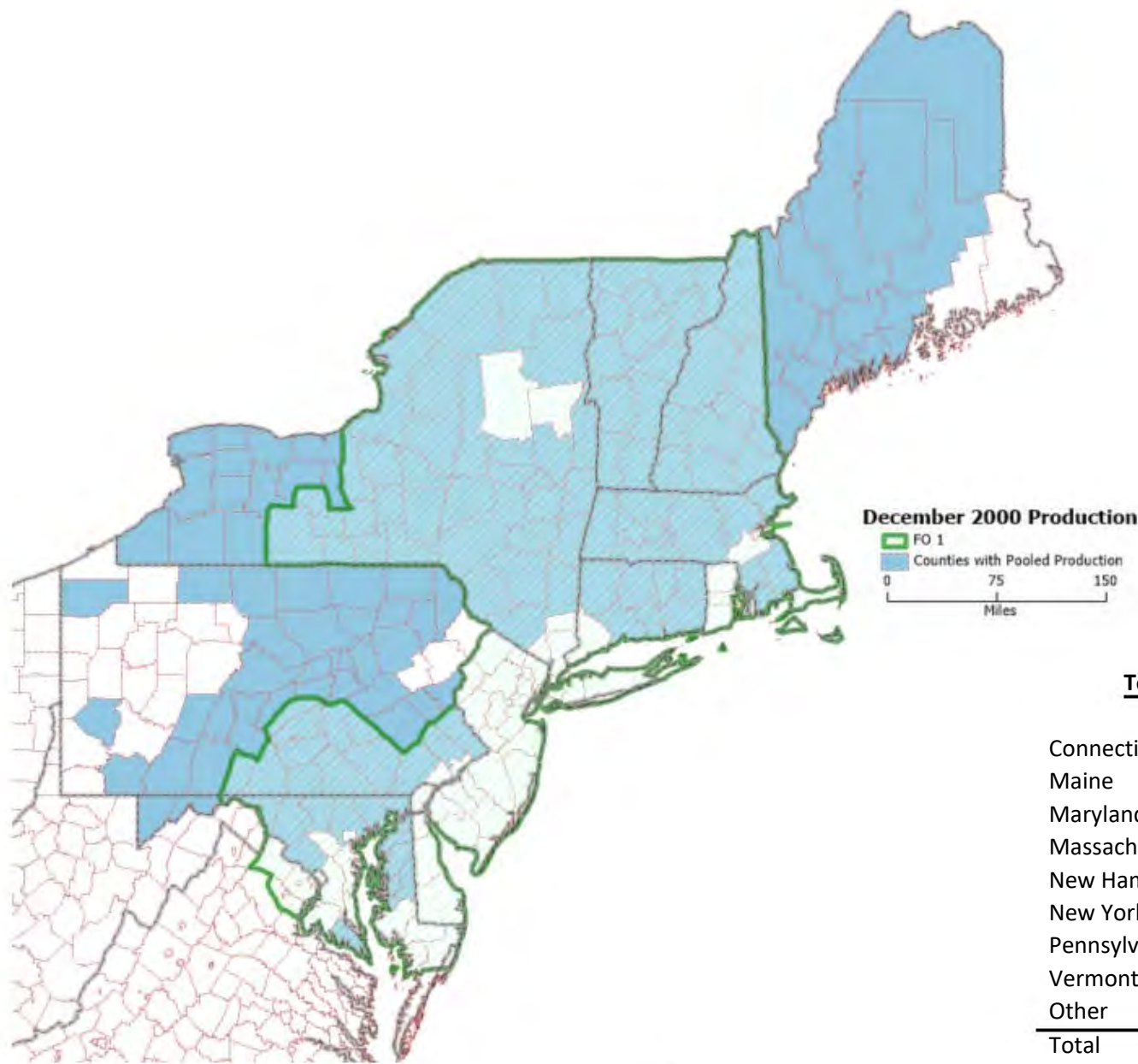
Producer Milk by County

December 2000

Maps Prepared by USDA – AMS – Dairy Program

Producer Milk by County - December 2000
 Northeast Marketing Area – FO 1*

Exhibit 53



Restricted states include: Delaware, Michigan, Minnesota, Nevada, New Jersey, Utah, Rhode Island, Virginia, West Virginia, Wisconsin

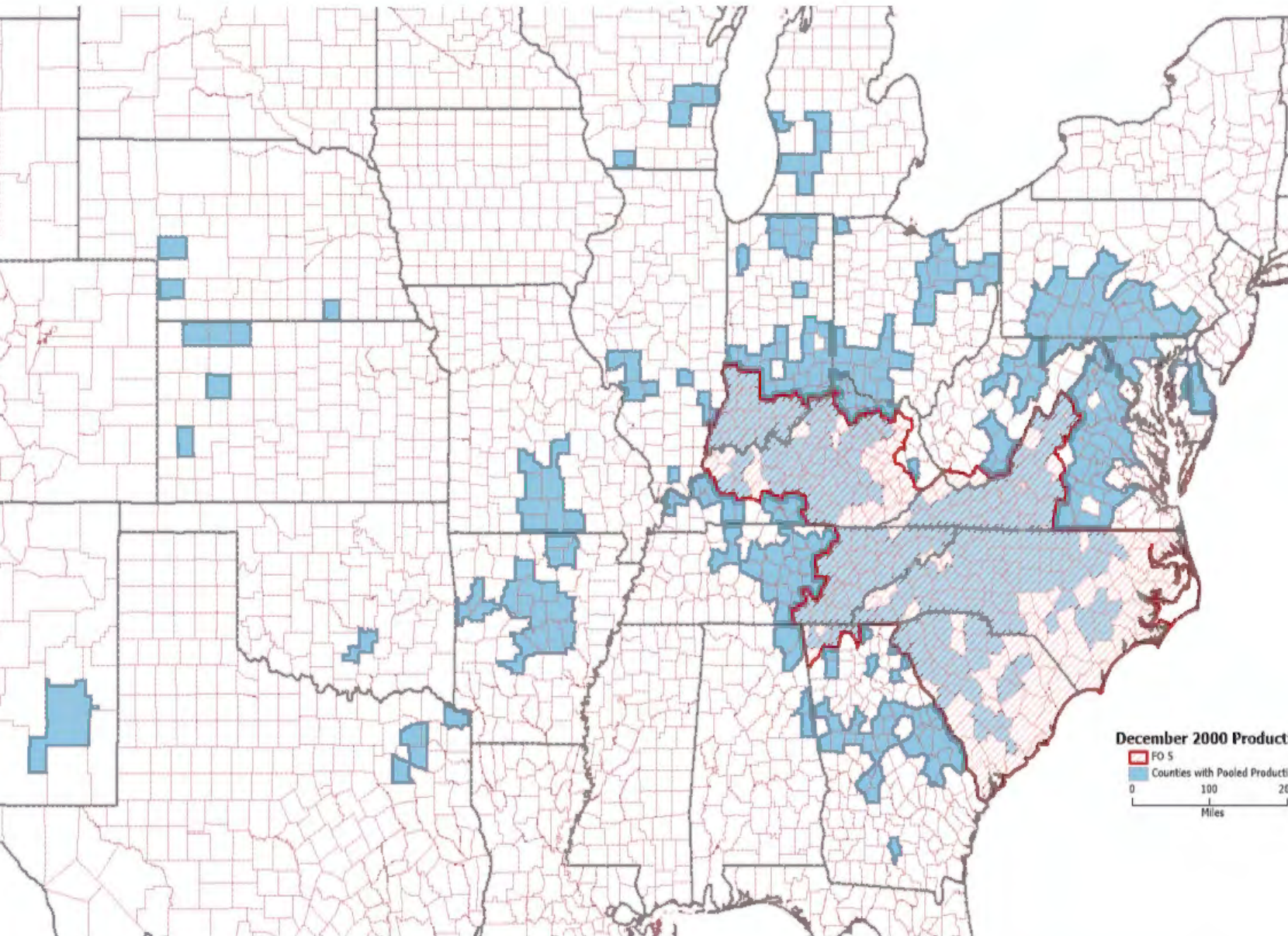
Each Federal Milk Market Order may present data differently while maintaining confidentiality. Differences among the maps reflect this.
 *FO 1 data are rounded to 1,000 pounds based on FO 1 reporting format.

Producer Milk by County - December 2000
 Appalachian Marketing Area – FO 5

Exhibit 53

Total Pounds by State

Alabama	578,671
Arkansas	1,838,024
Delaware	2,152,862
Georgia	13,356,440
Illinois	1,420,927
Indiana	47,076,872
Kansas	2,119,777
Kentucky	94,271,303
Maryland	13,003,701
Michigan	15,782,206
Missouri	2,980,283
Nebraska	729,308
North Carolina	91,513,573
Ohio	12,421,479
Pennsylvania	48,226,114
South Carolina	30,175,864
Tennessee	63,806,338
Texas	1,044,359
Virginia	102,082,022
West Virginia	7,617,637
Wisconsin	4,606,125
Other	1,418,054
Total	558,221,939

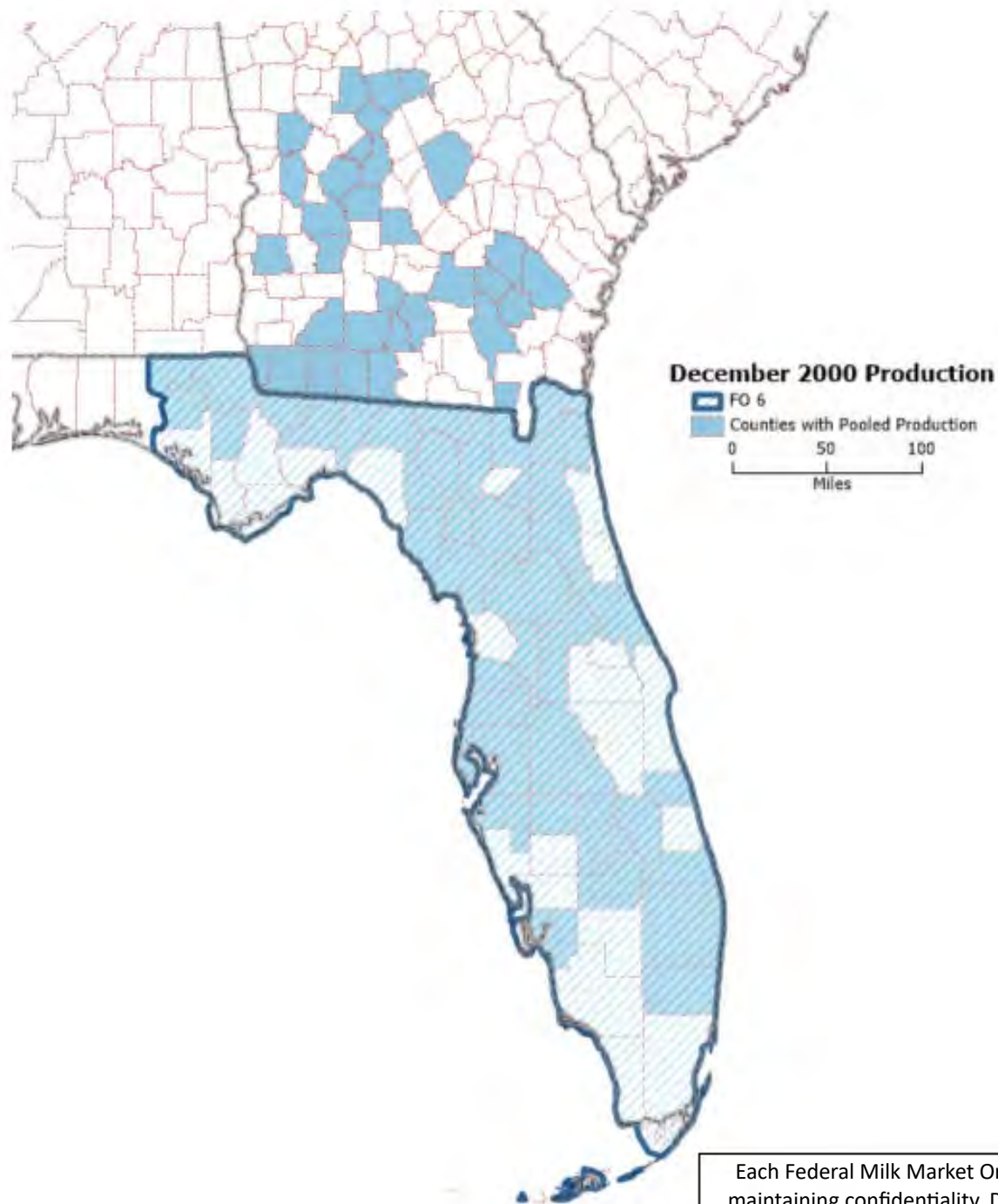


Restricted states include: New Mexico, Oklahoma

Each Federal Milk Market Order may present data differently while maintaining confidentiality. Differences among the maps reflect this.

Producer Milk by County - December 2000

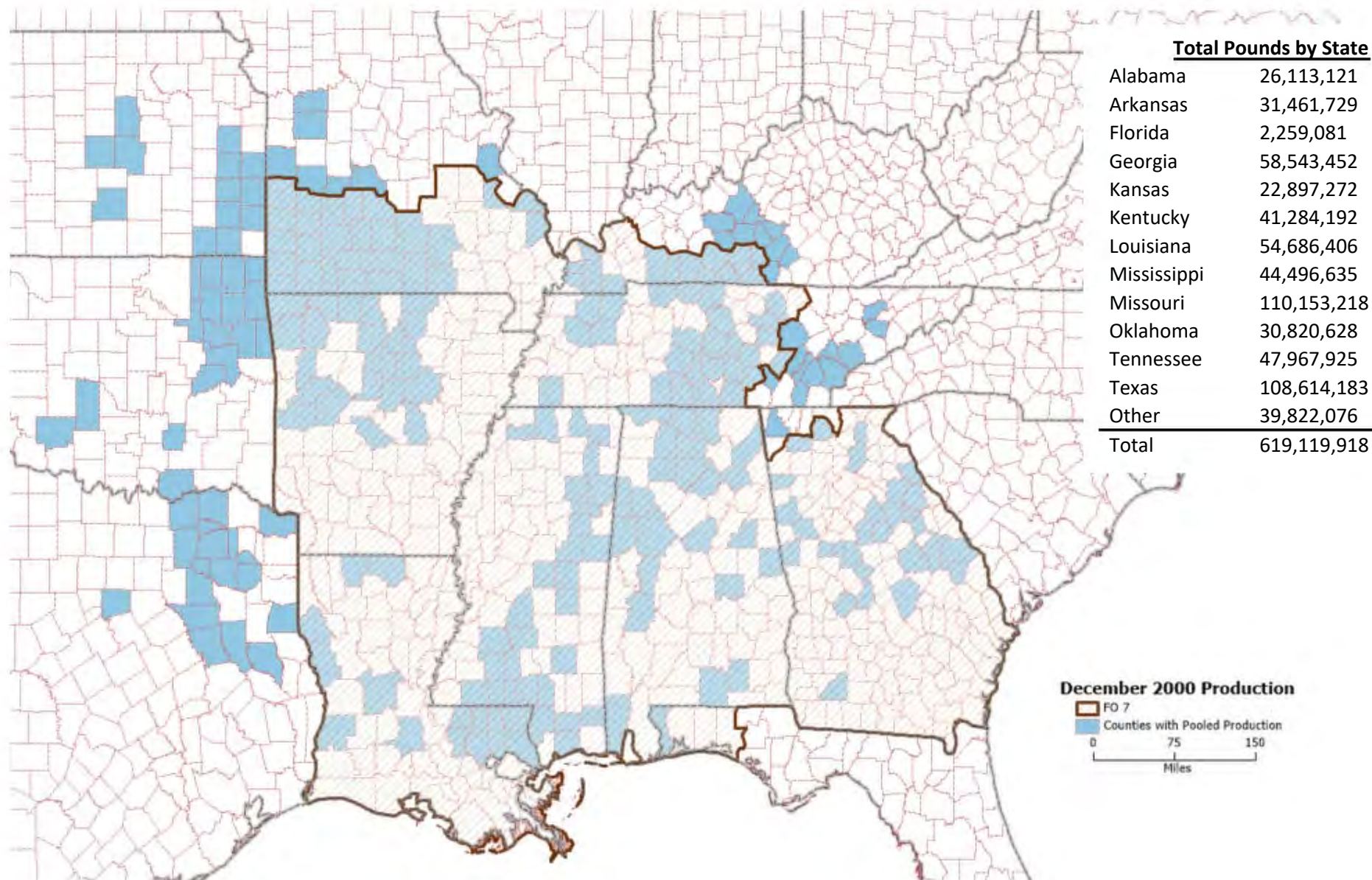
Florida Marketing Area – FO 6



Total Pounds by State	
Florida	152,524,557
Georgia	100,551,372
Total	253,075,929

Each Federal Milk Market Order may present data differently while maintaining confidentiality. Differences among the maps reflect this.

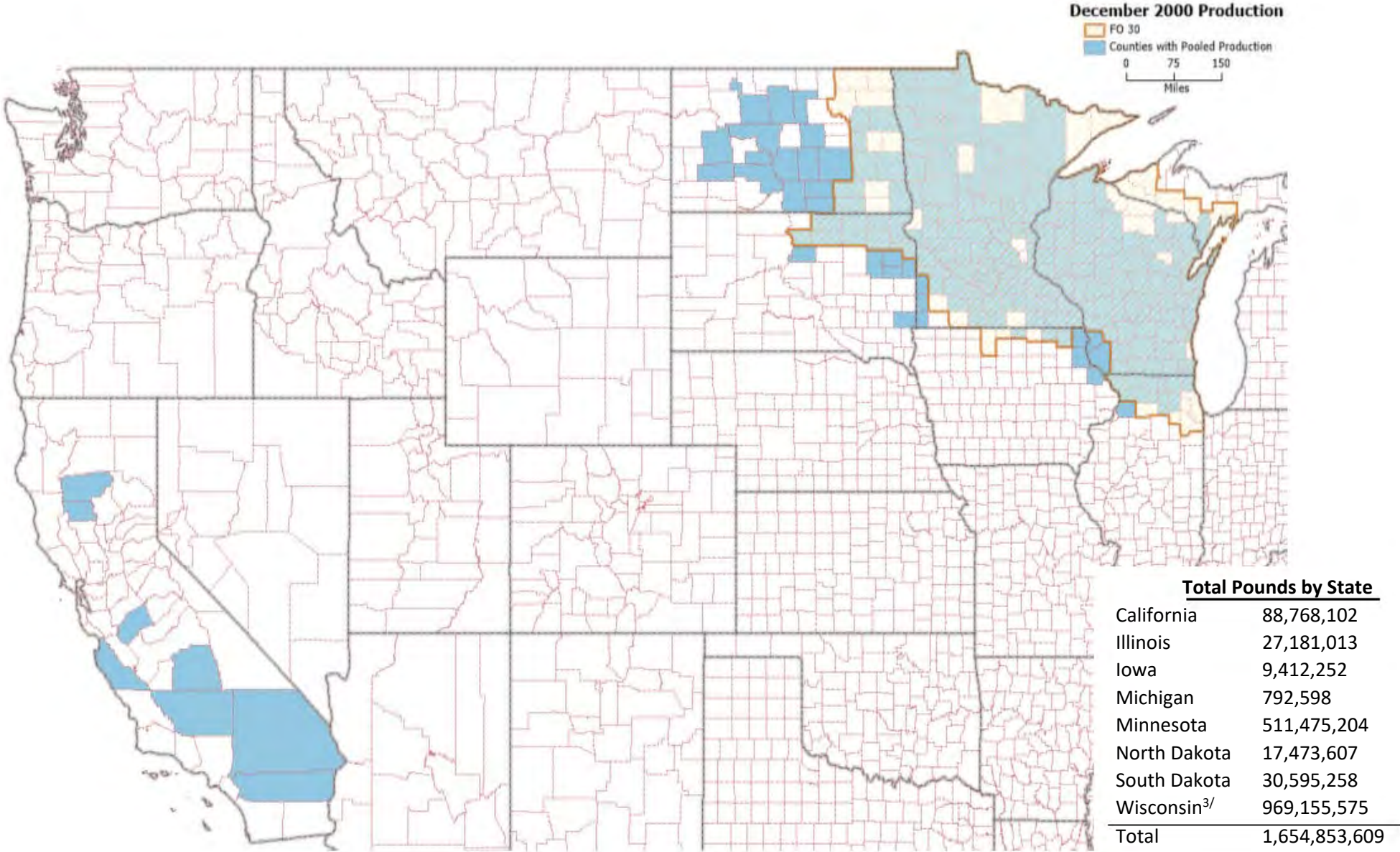
Producer Milk by County - December 2000
 Southeast Marketing Area – FO 7



Restricted states include: Illinois, Indiana, Maryland, Michigan, Minnesota, New Mexico, Ohio, Pennsylvania, South Carolina, Virginia, Wisconsin

Each Federal Milk Market Order may present data differently while maintaining confidentiality. Differences among the maps reflect this.

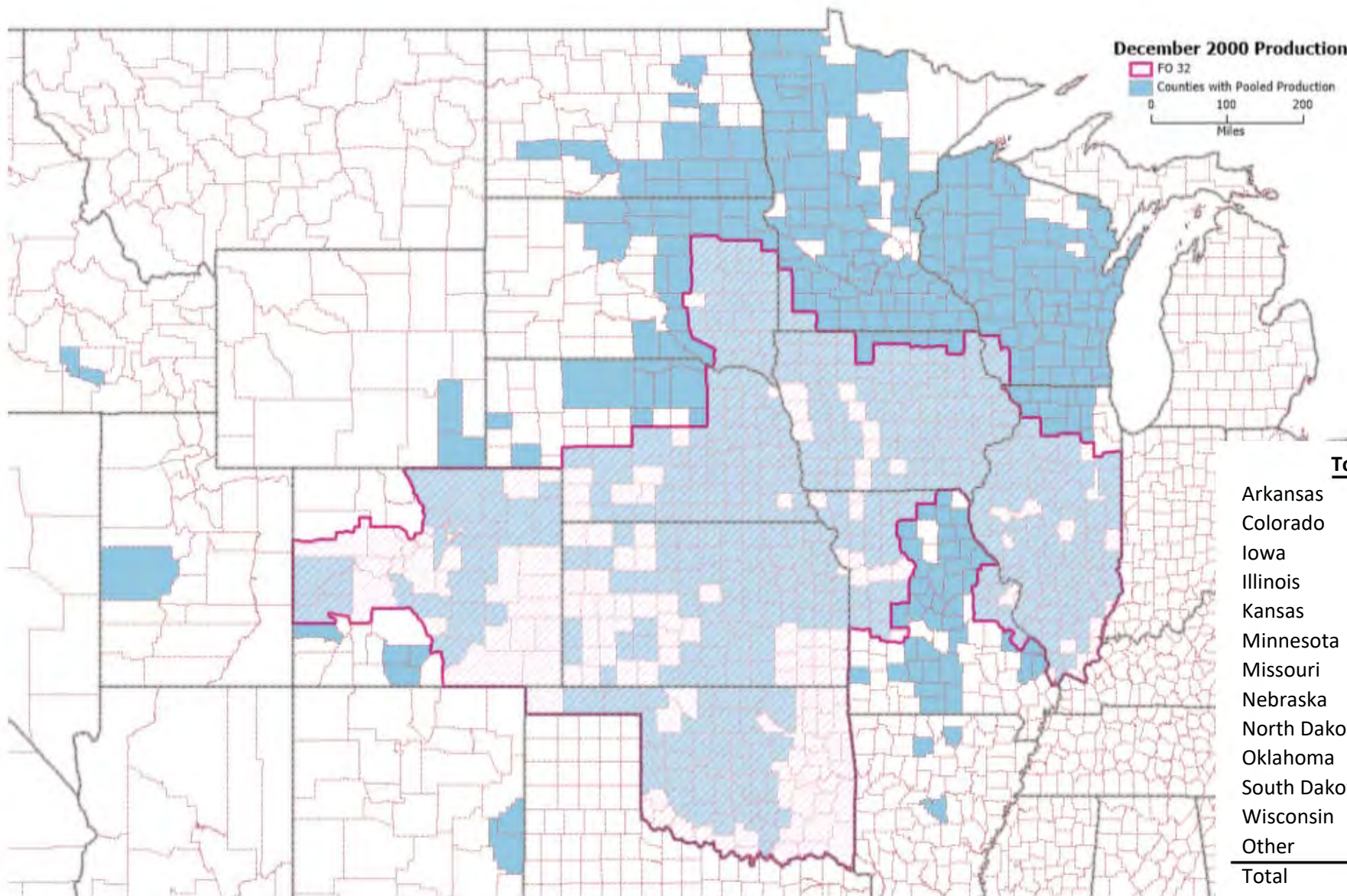
Producer Milk by County - December 2000
 Upper Midwest Marketing Area – FO 30



^{3/}Restricted MT included in WI

Each Federal Milk Market Order may present data differently while maintaining confidentiality. Differences among the maps reflect this.

Producer Milk by County - December 2000
 Central Marketing Area – FO 32

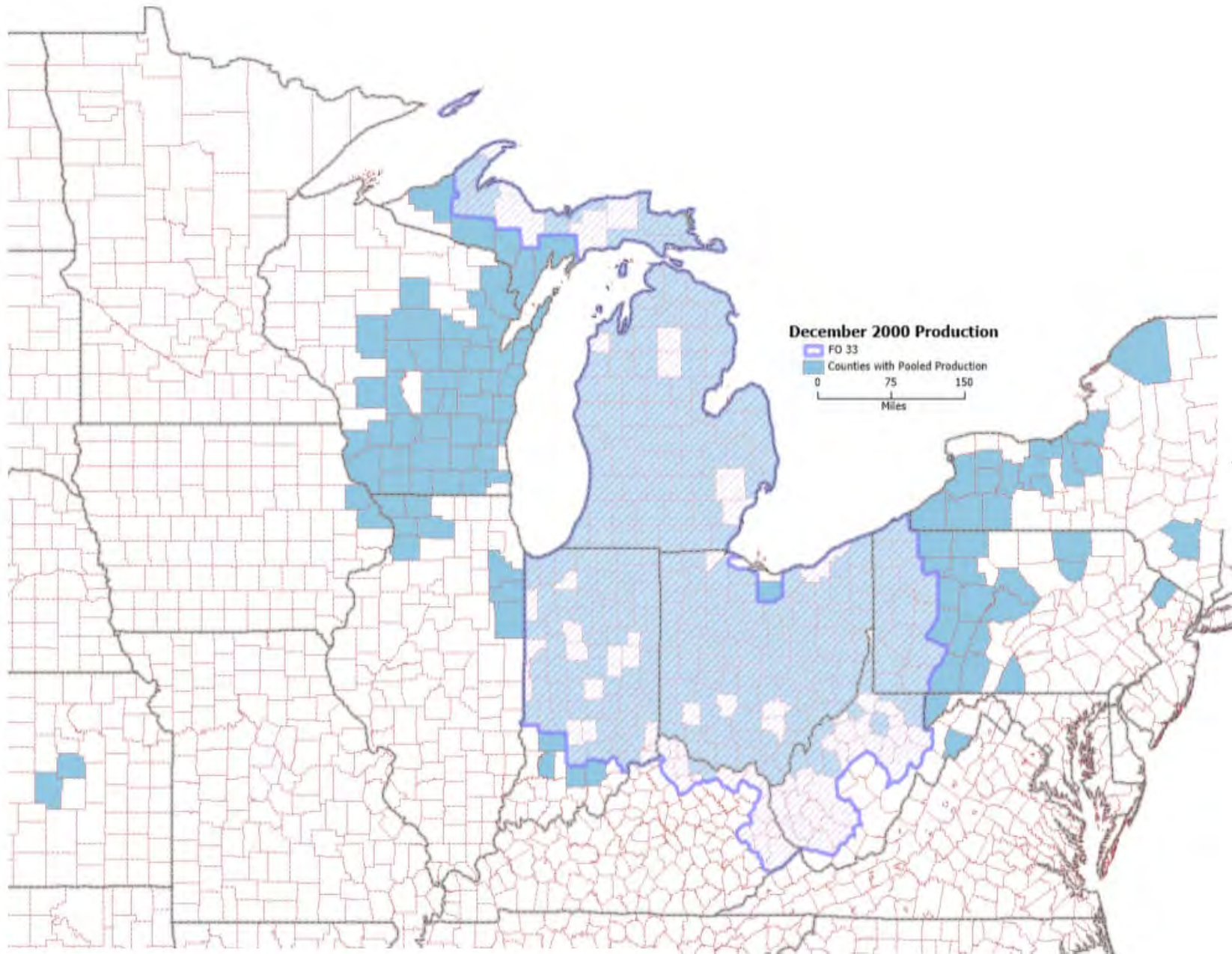


Total Pounds by State	
Arkansas	179,397
Colorado	125,511,796
Iowa	244,429,973
Illinois	111,091,058
Kansas	93,125,030
Minnesota	142,210,978
Missouri	36,648,477
Nebraska	83,734,049
North Dakota	9,254,521
Oklahoma	25,636,746
South Dakota	53,976,000
Wisconsin	452,684,550
Other	24,406,520
Total	1,402,889,095

Restricted states include: Idaho, New Mexico, Utah, Wyoming

Each Federal Milk Market Order may present data differently while maintaining confidentiality. Differences among the maps reflect this.

Producer Milk by County - December 2000
 Mideast Marketing Area – FO 33



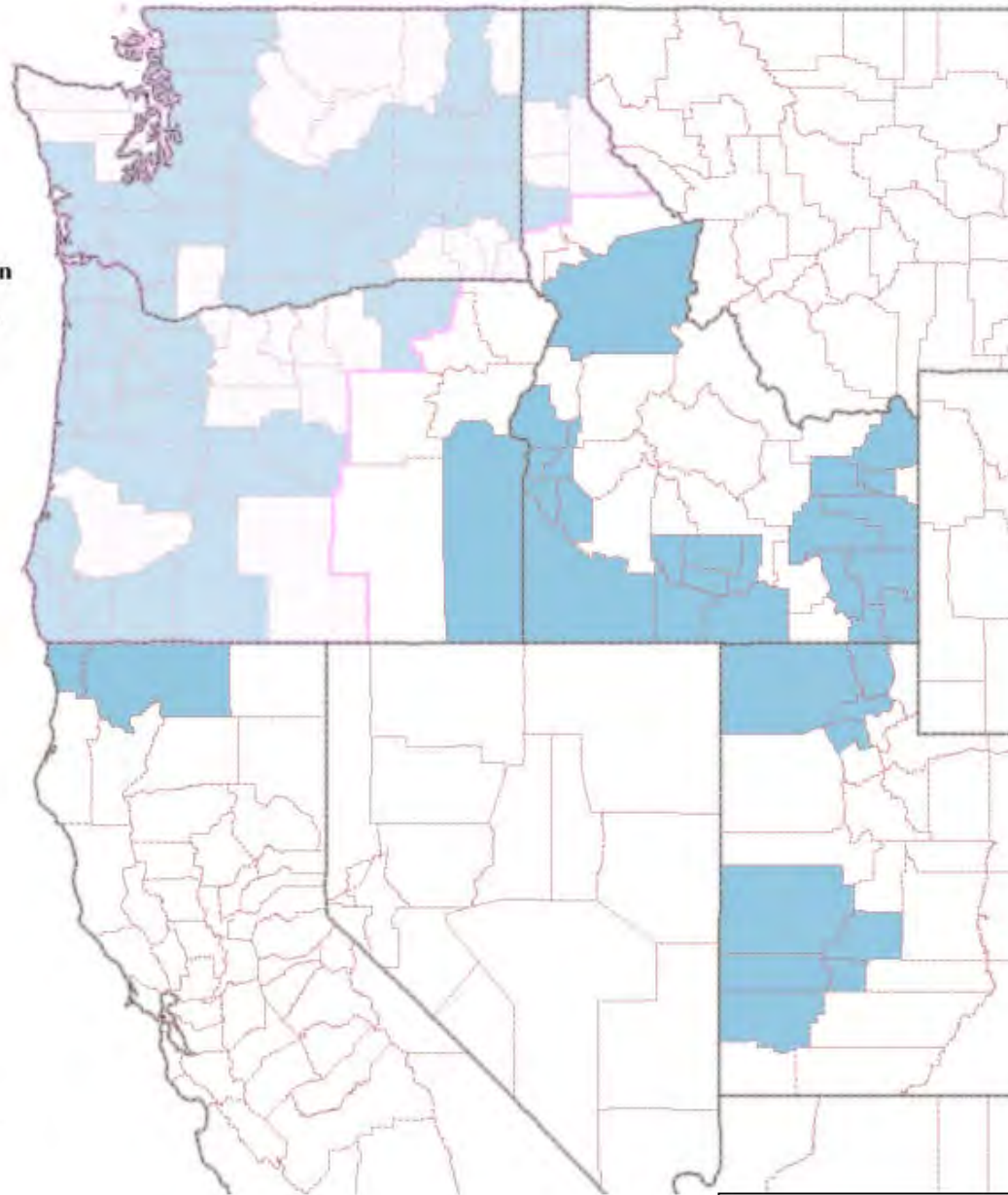
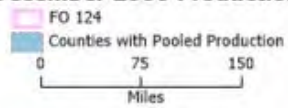
Total Pounds by State	
Illinois	15,451,544
Indiana	15,018,546
Iowa	2,026,023
Kansas	4,560,709
Kentucky	1,836,952
Maryland	3,144,462
Michigan	338,407,397
New Jersey	738,576
New York	87,559,094
Ohio	281,788,353
Pennsylvania	132,413,102
West Virginia	5,528,266
Wisconsin	251,245,217
Other	108,028,675
Total	1,247,746,916

Restricted states include: Delaware, South Dakota, Tennessee

Each Federal Milk Market Order may present data differently while maintaining confidentiality. Differences among the maps reflect this.

Producer Milk by County - December 2000
 Pacific Northwest Marketing Area – FO 124

December 2000 Production

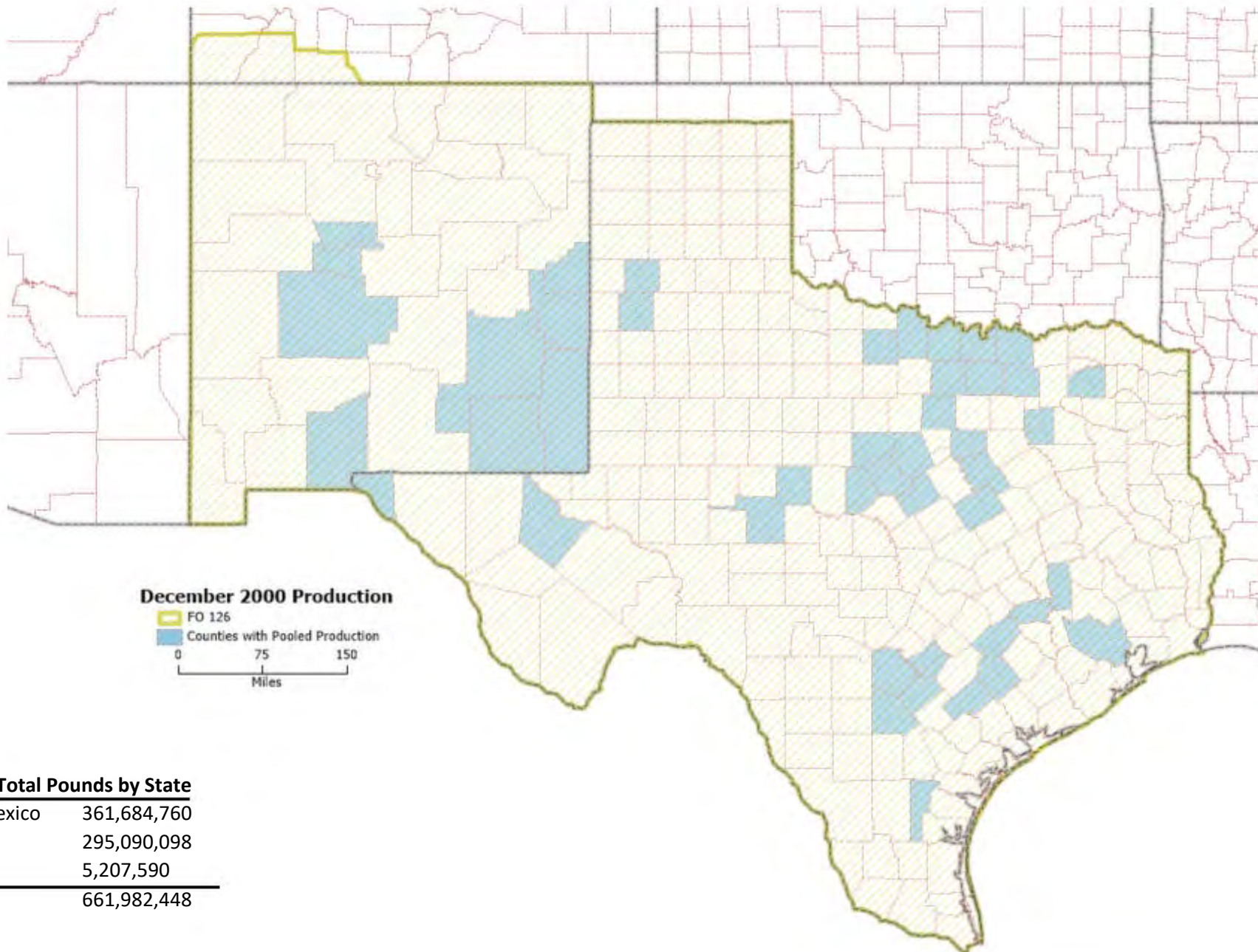


Total Pounds by State

California	4,427,842
Idaho	25,827,220
Oregon	121,579,345
Utah	9,567,612
Washington	371,829,356
Total	533,231,375

Each Federal Milk Market Order may present data differently while maintaining confidentiality. Differences among the maps reflect this.

Producer Milk by County - December 2000
 Southwest Marketing Area – FO 126

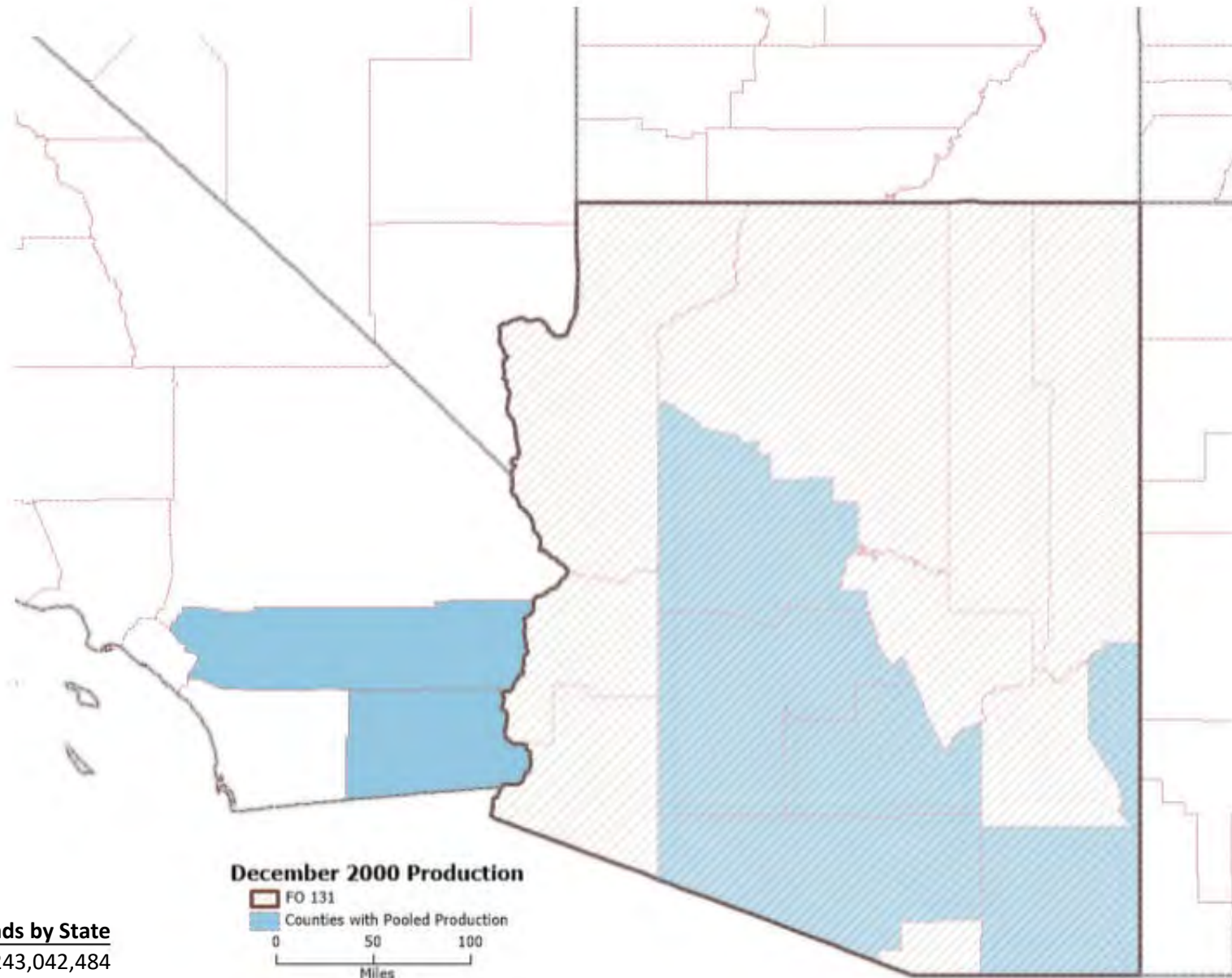


Total Pounds by State	
New Mexico	361,684,760
Texas	295,090,098
Other	5,207,590
Total	661,982,448

Restricted states include: Kansas, Oklahoma

Each Federal Milk Market Order may present data differently while maintaining confidentiality. Differences among the maps reflect this.

Producer Milk by County - December 2000
 Arizona Marketing Area – FO 131



Total Pounds by State	
Arizona	243,042,484
California	8,446,890
Total	251,489,374

Each Federal Milk Market Order may present data differently while maintaining confidentiality. Differences among the maps reflect this.