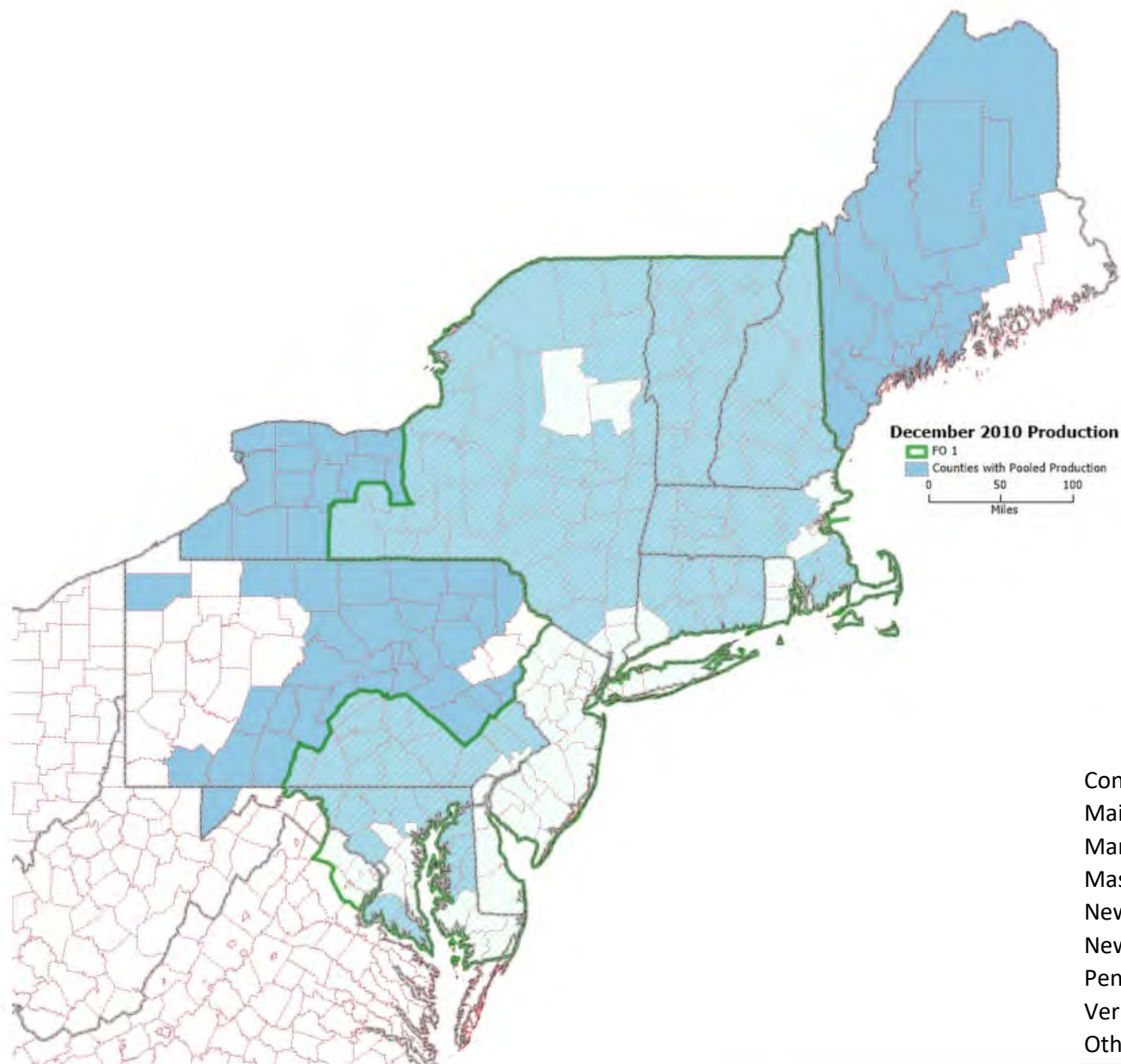


Producer Milk by County December 2010

Maps Prepared by USDA – AMS – Dairy Program



Total Pounds by State

1,000 lbs

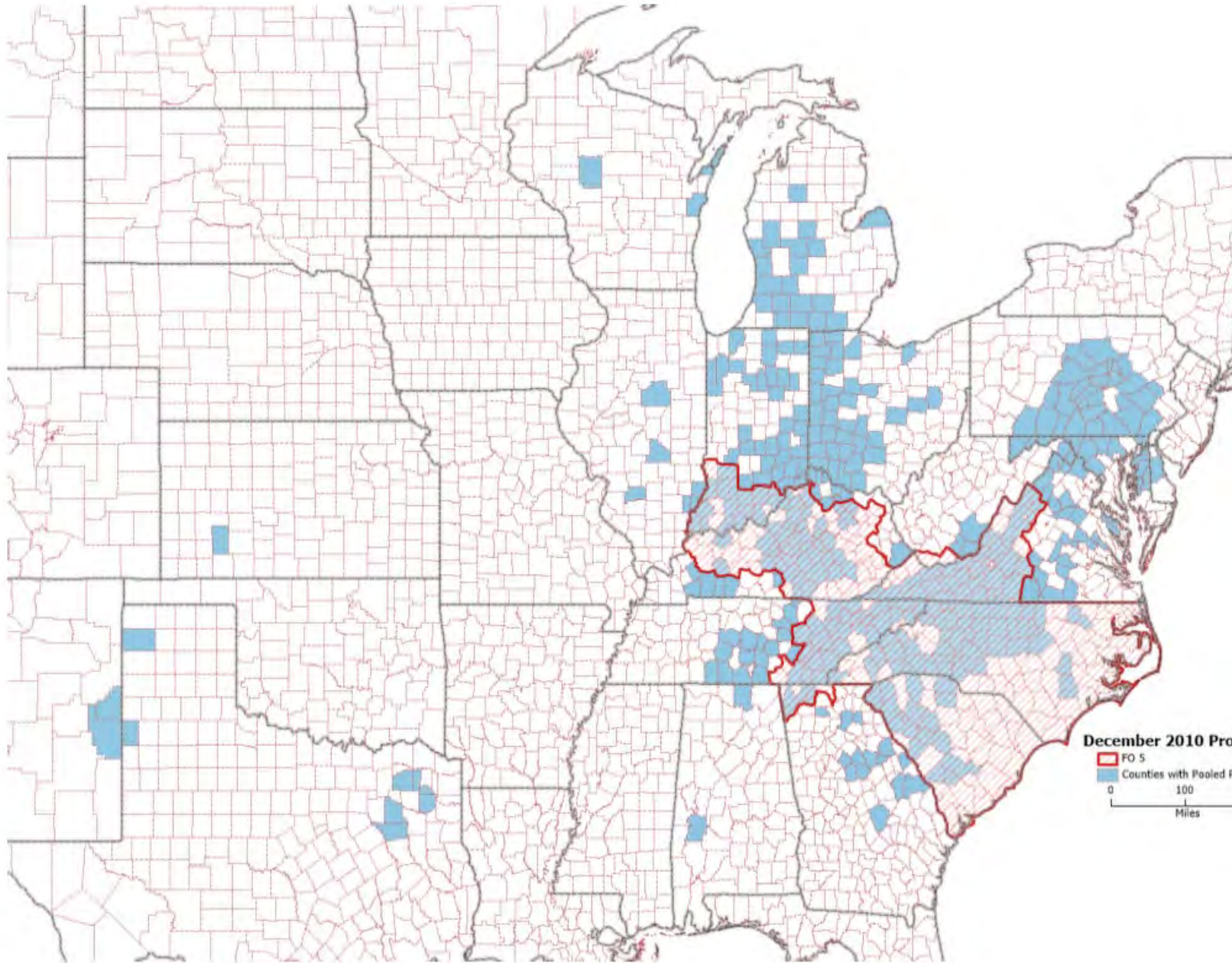
Connecticut	29,542
Maine	48,956
Maryland	63,473
Massachusetts	17,438
New Hampshire	23,721
New York	932,040
Pennsylvania	665,960
Vermont	210,899
Other	70,308
Total	2,062,337

Restricted states include: Delaware, Indiana, Kentucky, Michigan, Minnesota, Missouri, New Jersey, Ohio, Rhode Island, Virginia, West Virginia, Wisconsin

Each Federal Milk Market Order may present data differently while maintaining confidentiality. Differences among the maps reflect this.

*FO 1 data are rounded to 1,000 pounds based on FO 1 reporting format.

Producer Milk by County - December 2010
 Appalachian Marketing Area – FO 5



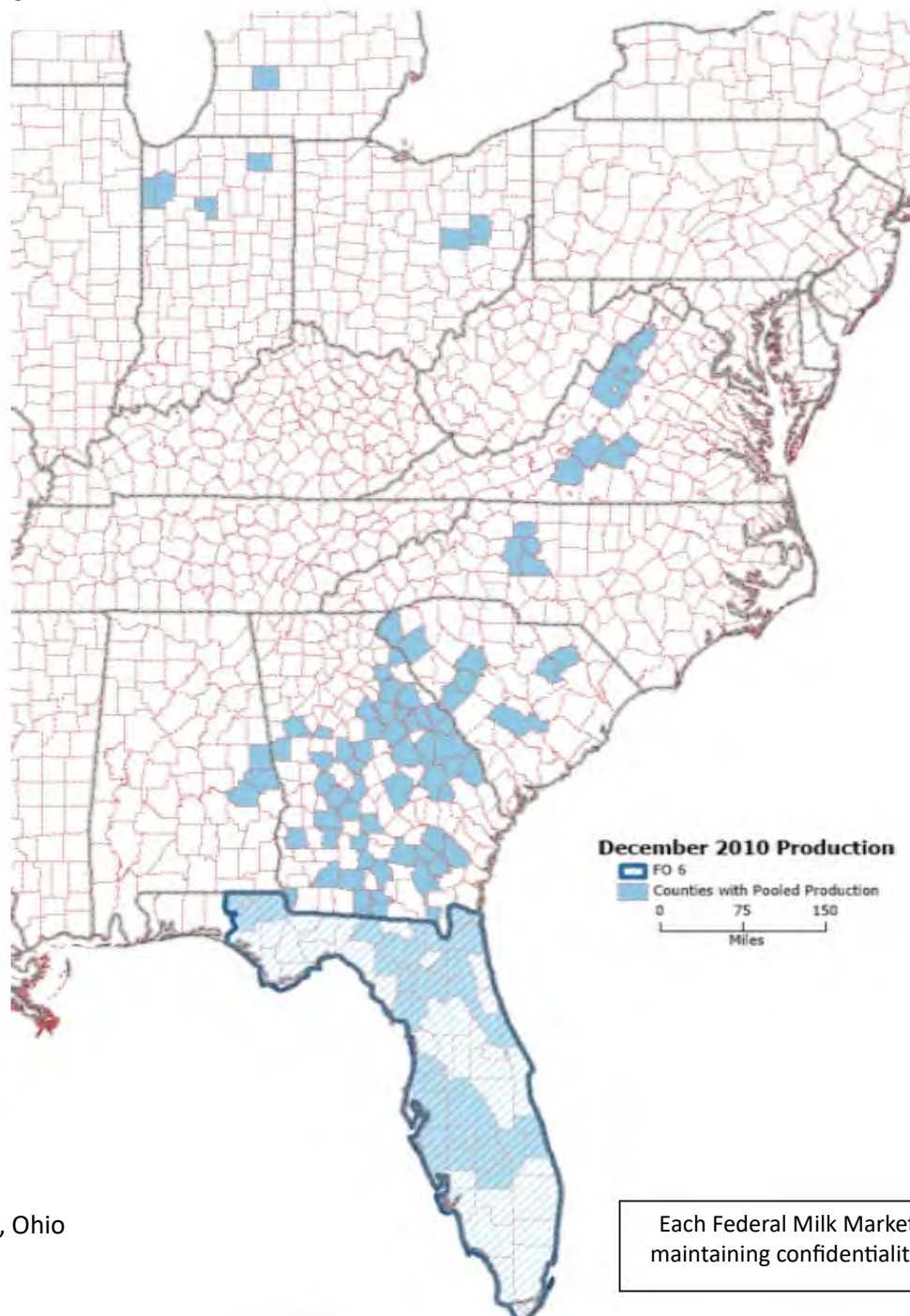
Total Pounds by State	
Georgia	4,022,676
Indiana	54,321,675
Kentucky	40,667,727
Maryland	16,842,874
Michigan	52,631,054
North Carolina	62,200,628
Ohio	68,218,638
Pennsylvania	59,216,992
South Carolina	18,241,659
Tennessee	39,214,545
Virginia	71,687,419
Other	39,356,737
Total	526,622,624

December 2010 Production
 FO 5
 Counties with Pooled Production
 0 100 200
 Miles

Restricted states include: Alabama, Delaware, Illinois, Kansas, New Mexico, Texas, West Virginia, Wisconsin

Each Federal Milk Market Order may present data differently while maintaining confidentiality. Differences among the maps reflect this.

Producer Milk by County - December 2010
 Florida Marketing Area – FO 6

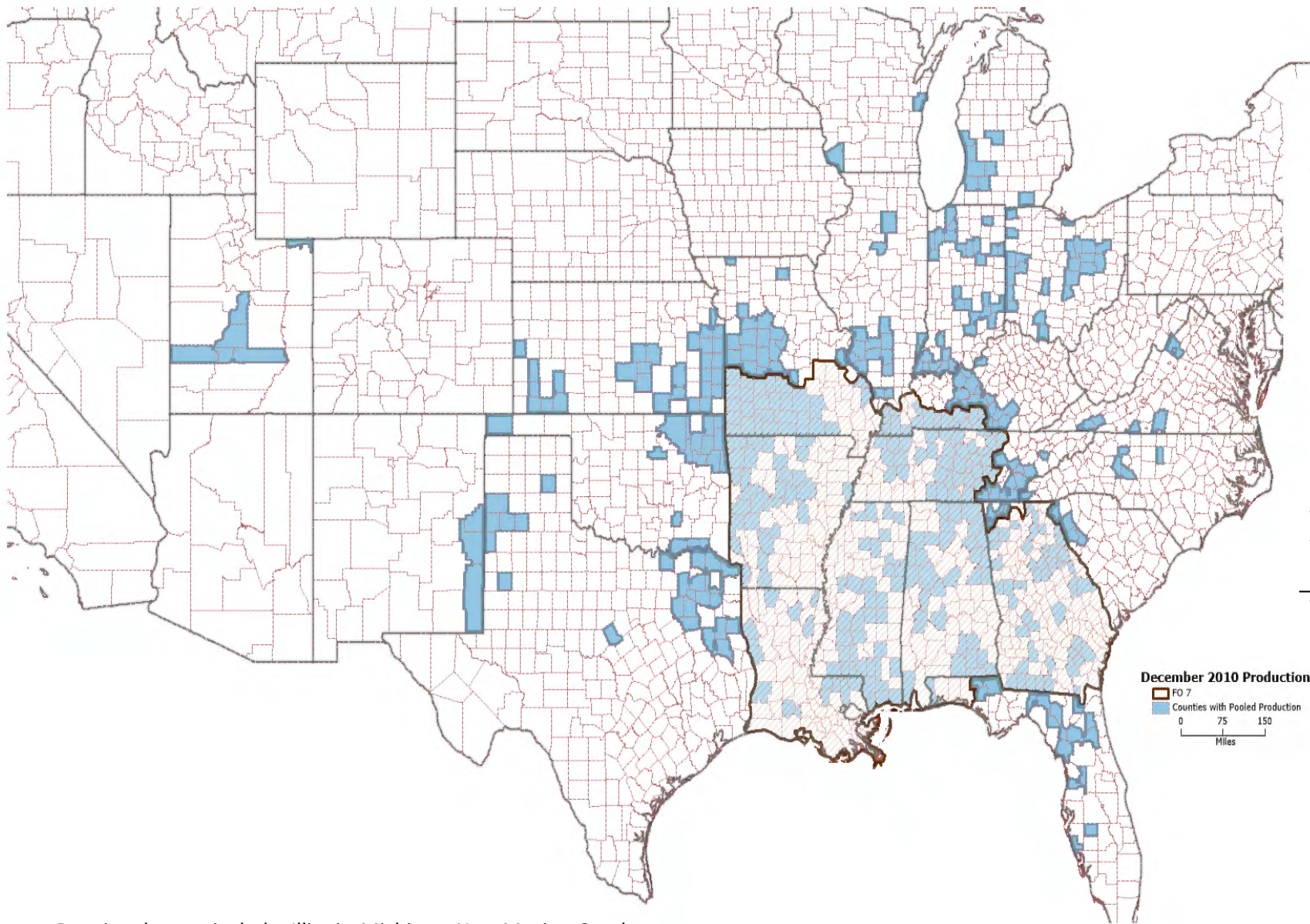


Total Pounds by State	
Alabama	359,965
Florida	162,269,122
Georgia	59,265,019
North Carolina	9,571,384
South Carolina	3,841,510
Virginia	10,817,252
Other	8,256,923
Total	254,381,175

Restricted states include: Indiana, Michigan, Ohio

Each Federal Milk Market Order may present data differently while maintaining confidentiality. Differences among the maps reflect this.

Producer Milk by County - December 2010
 Southeast Marketing Area – FO 7



Total Pounds by State	
Alabama	11,022,449
Arkansas	11,884,308
Florida	26,568,809
Georgia	47,651,654
Indiana	84,216,058
Kansas	52,074,800
Kentucky	51,716,639
Louisiana	19,845,376
Mississippi	18,092,142
Missouri	73,126,357
North Carolina	2,533,505
Ohio	8,089,552
Oklahoma	21,172,382
Tennessee	28,041,130
Texas	130,054,505
Other	43,204,050
Total	629,293,716

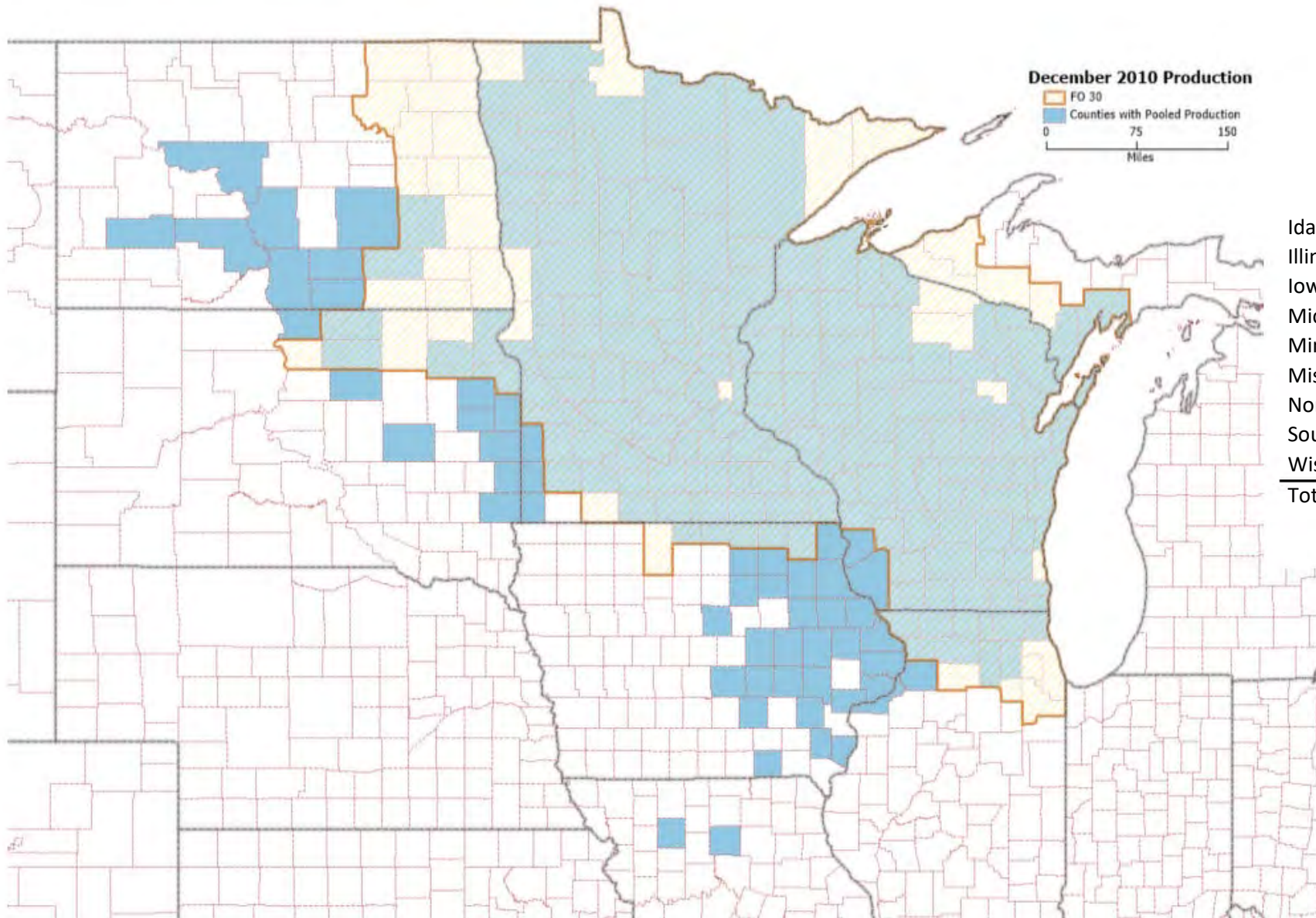
December 2010 Production
 FO 7
 Counties with Pooled Production
 0 75 150
 Miles

Restricted states include: Illinois, Michigan, New Mexico, South Carolina, Utah, Virginia, Wisconsin

Each Federal Milk Market Order may present data differently while maintaining confidentiality. Differences among the maps reflect this.

Producer Milk by County - December 2010
 Upper Midwest Marketing Area – FO 30

Exhibit 55



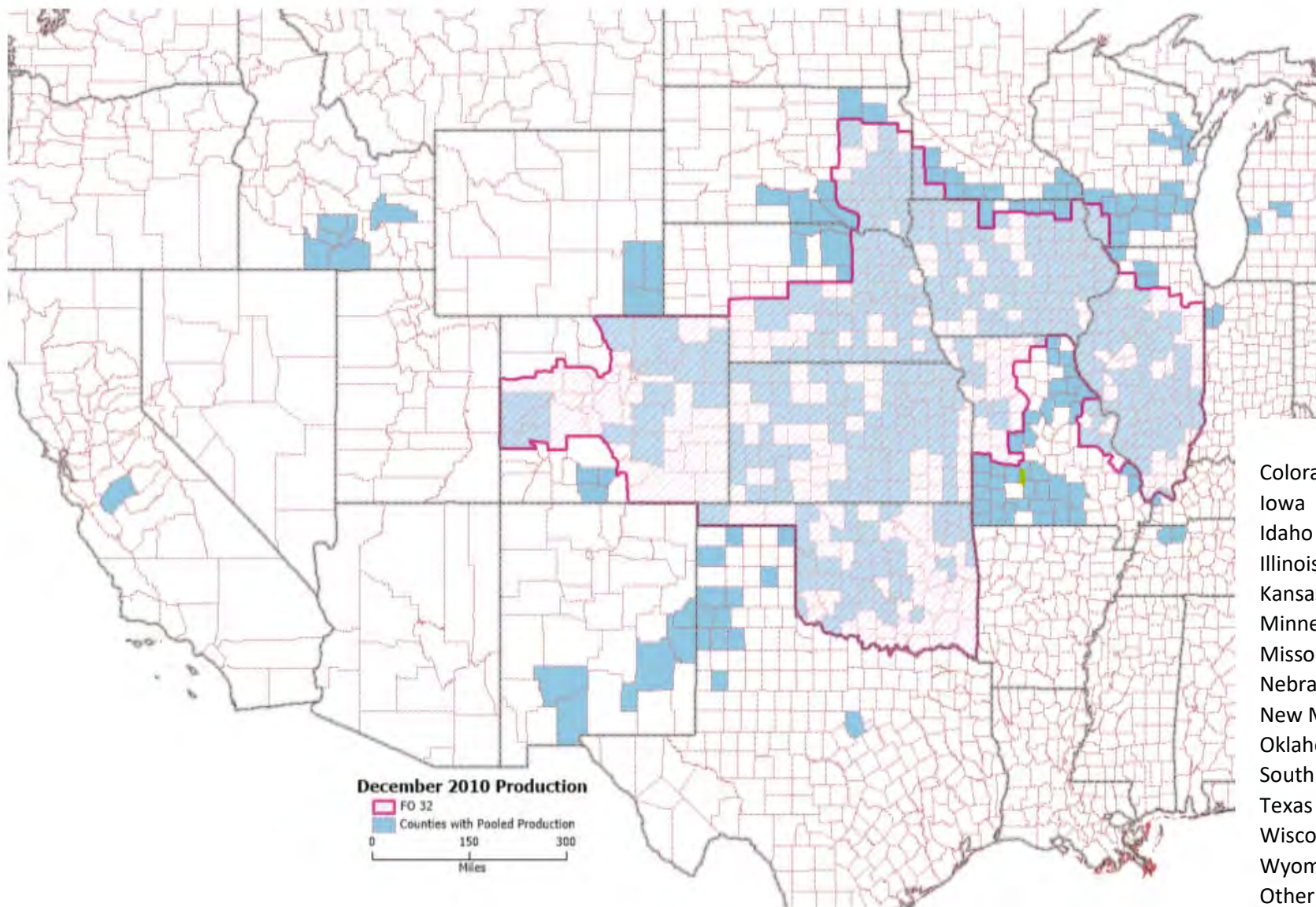
Total Pounds by State

Idaho	1,716,978
Illinois	38,735,678
Iowa	92,855,564
Michigan	7,295,696
Minnesota	668,663,256
Missouri	892,794
North Dakota	22,057,806
South Dakota	87,043,806
Wisconsin ^{1/}	1,844,747,469
Total	2,764,009,047

^{1/} Restricted IN included in WI

Each Federal Milk Market Order may present data differently while maintaining confidentiality. Differences among the maps reflect this.

Producer Milk by County - December 2010
 Central Marketing Area – FO 32



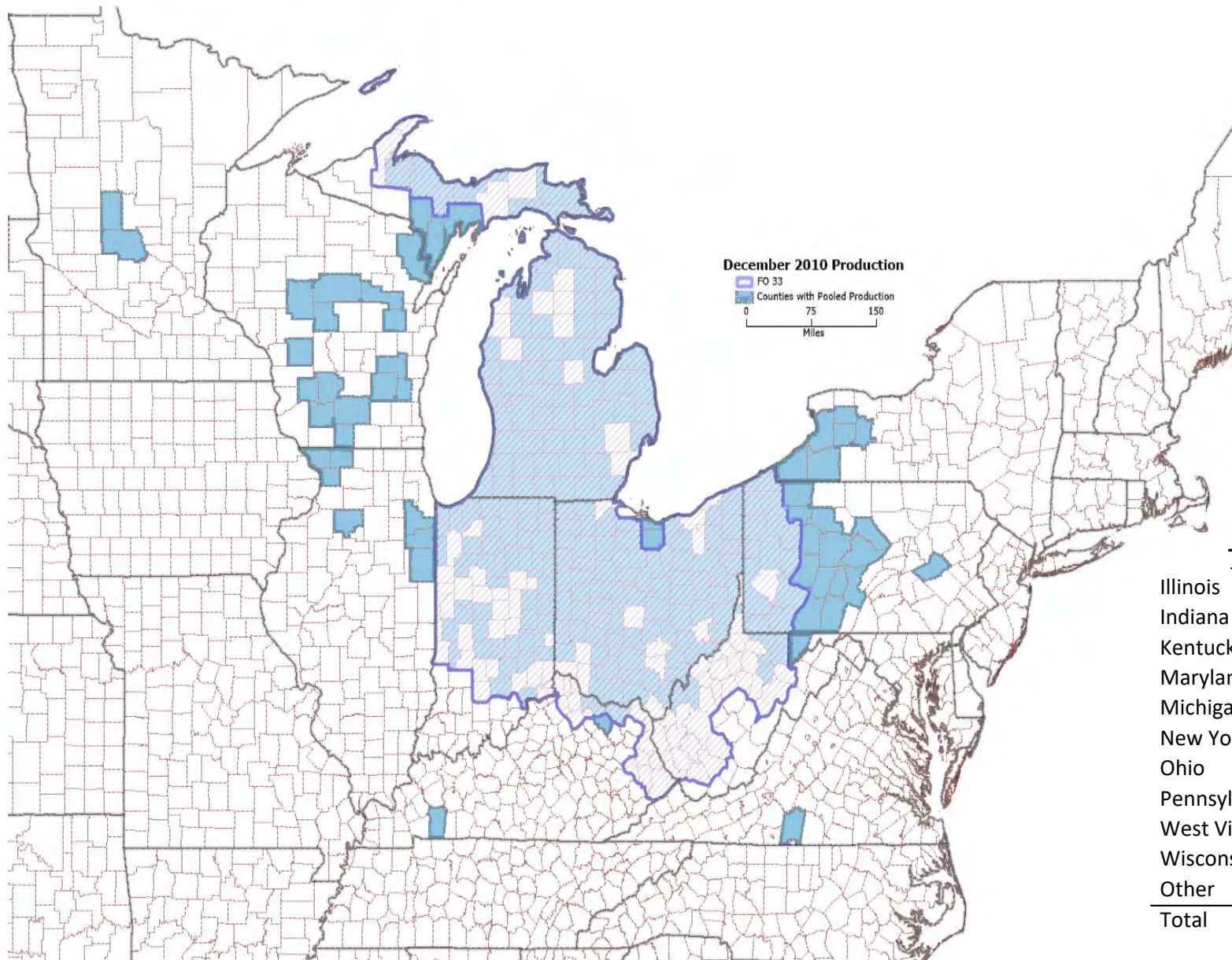
Total Pounds by State

Colorado	233,852,556
Iowa	222,626,218
Idaho	67,645,801
Illinois	70,130,225
Kansas	102,646,388
Minnesota	31,970,687
Missouri	31,727,699
Nebraska	84,326,678
New Mexico	121,248,114
Oklahoma	45,930,800
South Dakota	55,386,324
Texas	65,715,769
Wisconsin	41,467,341
Wyoming	7,126,357
Other	1,779,022
Total	1,183,579,979

Restricted states include: California, Indiana, Kentucky, Michigan, Tennessee

Each Federal Milk Market Order may present data differently while maintaining confidentiality. Differences among the maps reflect this.

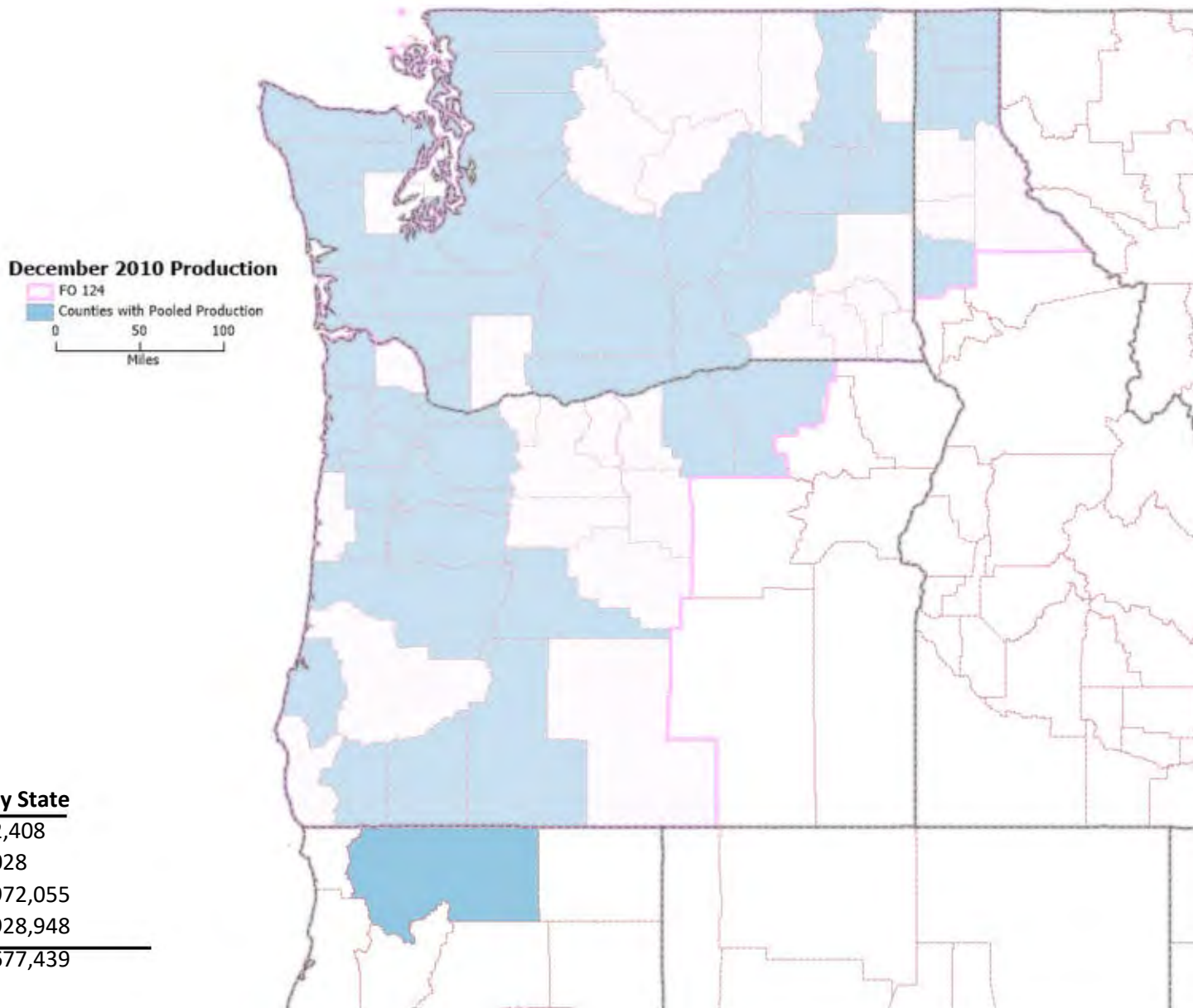
Producer Milk by County - December 2010
 Midwest Marketing Area – FO 33



Total Pounds by State	
Illinois	15,922,224
Indiana	122,585,851
Kentucky	2,096,877
Maryland	3,594,237
Michigan	588,117,650
New York	96,807,028
Ohio	281,525,124
Pennsylvania	102,874,588
West Virginia	3,959,359
Wisconsin	85,427,498
Other	4,961,071
Total	1,307,871,507

Restricted states include: Minnesota, Virginia

Each Federal Milk Market Order may present data differently while maintaining confidentiality. Differences among the maps reflect this.

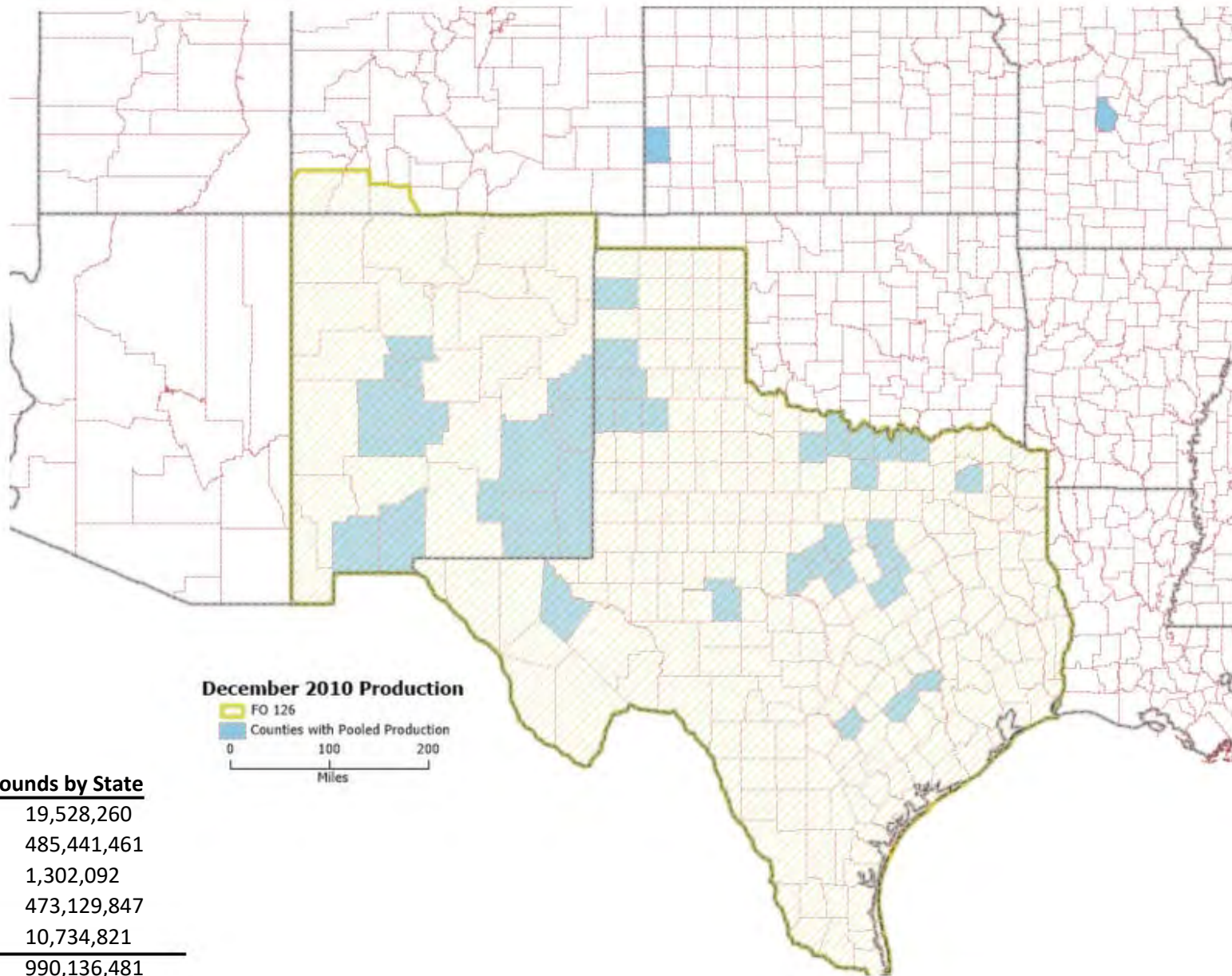


Total Pounds by State

California	1,392,408
Idaho	384,028
Oregon	177,972,055
Washington	477,928,948
Total	657,677,439

Each Federal Milk Market Order may present data differently while maintaining confidentiality. Differences among the maps reflect this.

Producer Milk by County - December 2010
 Southwest Marketing Area – FO 126



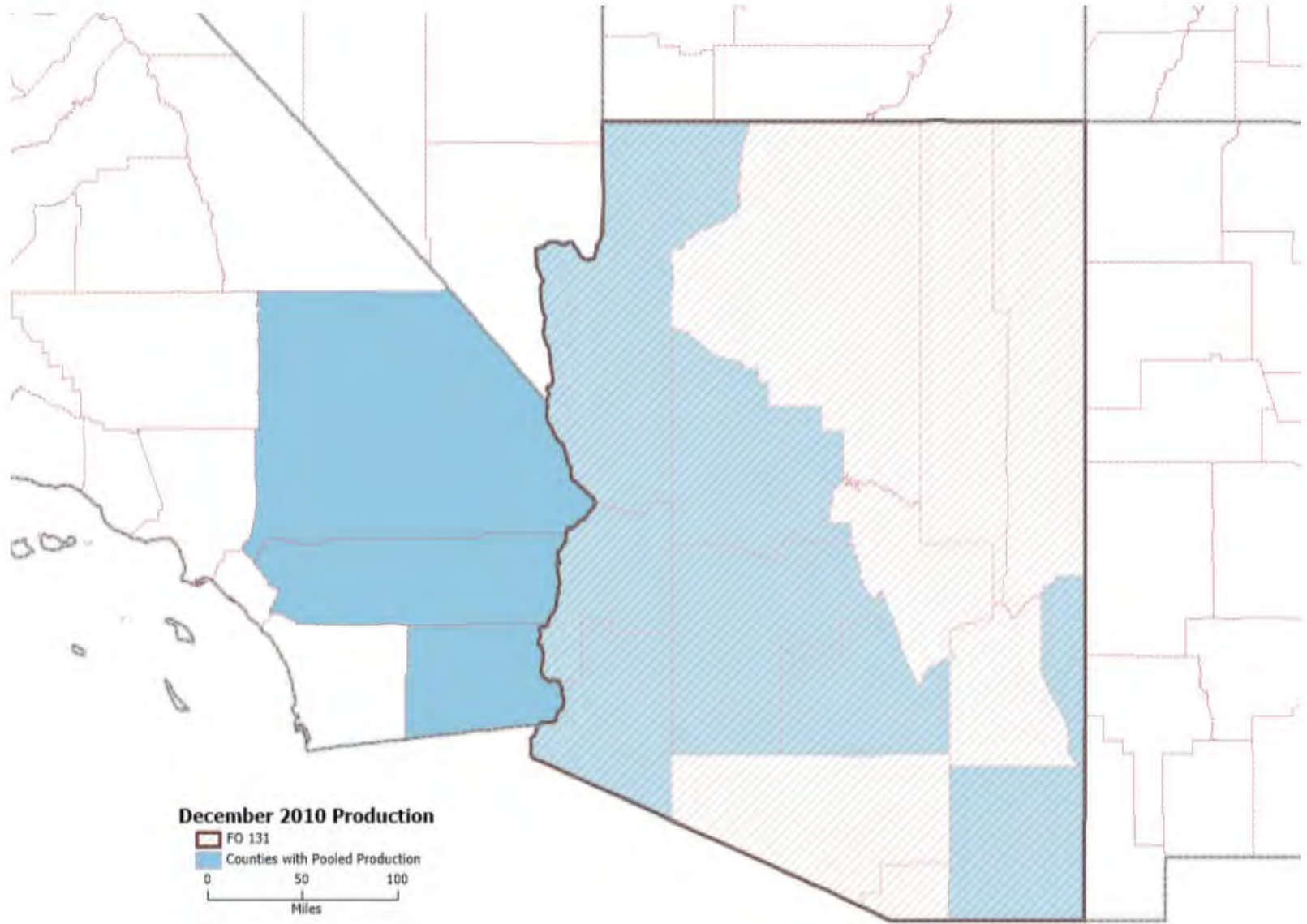
Total Pounds by State

Kansas	19,528,260
New Mexico	485,441,461
Oklahoma	1,302,092
Texas	473,129,847
Other	10,734,821
Total	990,136,481

Restricted states include: Arizona, Idaho, Missouri

Each Federal Milk Market Order may present data differently while maintaining confidentiality. Differences among the maps reflect this.

Producer Milk by County - December 2010
 Arizona Marketing Area – FO 131



Total Pounds by State	
Arizona ^{1/}	373,499,231
Total	373,499,231

^{1/} Restricted CA included in AZ

Each Federal Milk Market Order may present data differently while maintaining confidentiality. Differences among the maps reflect this.