

# Producer Milk by County

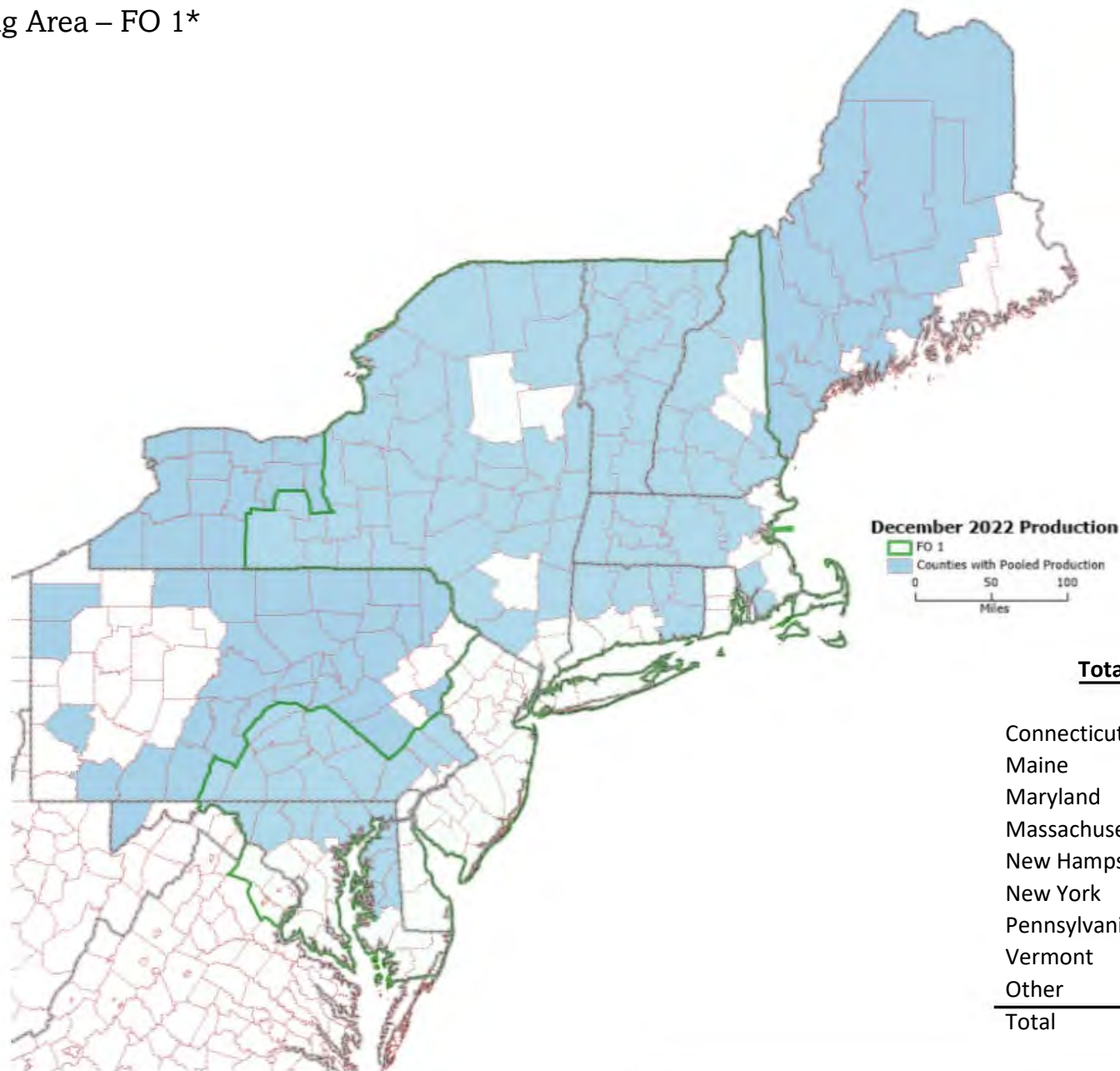
---

## December 2022

---

Maps Prepared by USDA – AMS – Dairy Program

Producer Milk by County - December 2022  
 Northeast Marketing Area – FO 1\*  
 Map

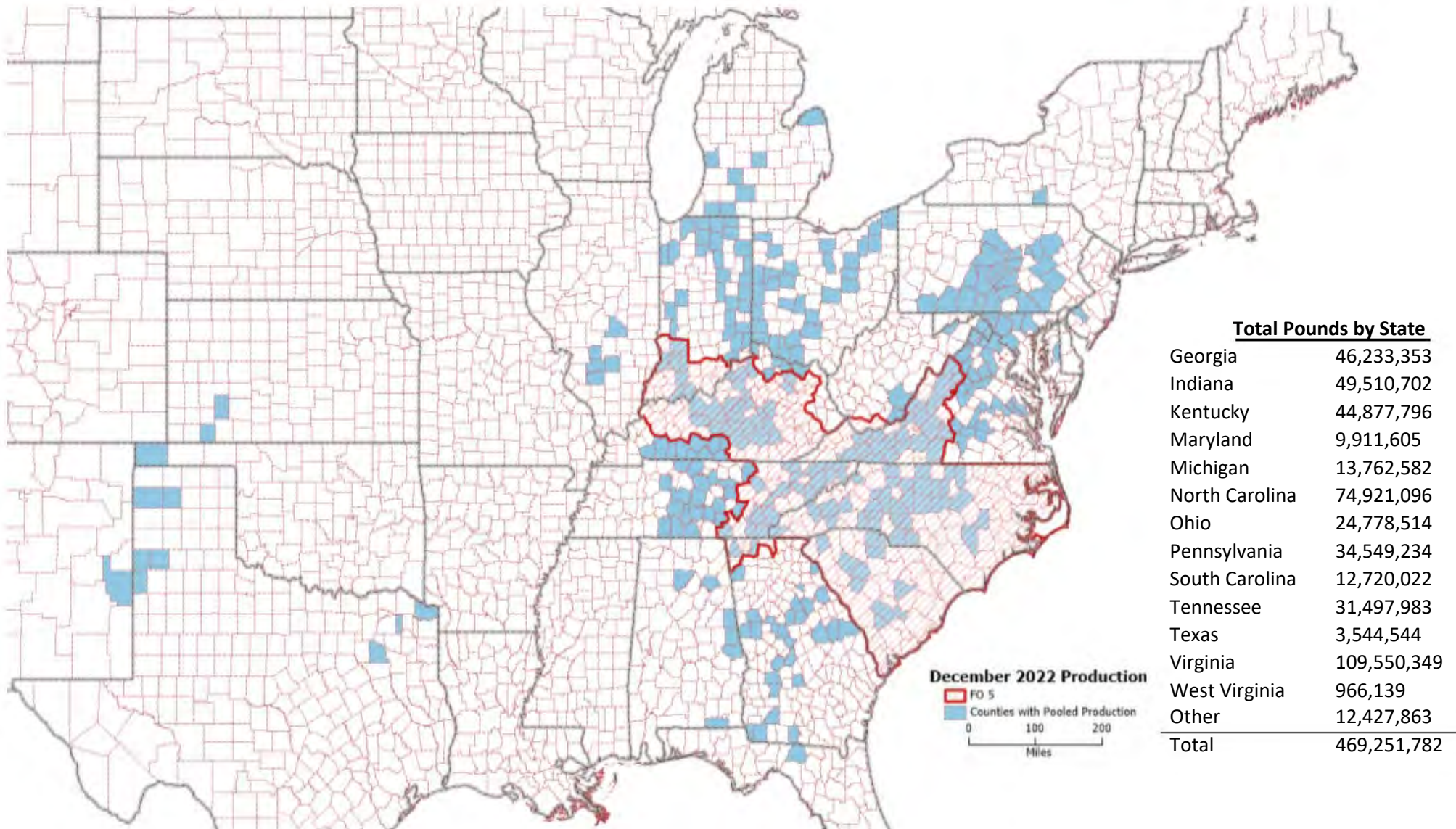


<b>Total Pounds by State</b>	
	<b>1,000 lbs</b>
Connecticut	34,435
Maine	44,490
Maryland	54,213
Massachusetts	13,752
New Hampshire	16,332
New York	1,208,810
Pennsylvania	640,532
Vermont	211,066
Other	22,149
<b>Total</b>	<b>2,245,779</b>

Restricted states include: Delaware, Georgia, Indiana, Kentucky, Michigan, Minnesota, New Jersey, North Carolina, Ohio, Rhode Island, Virginia, West Virginia, Wisconsin

Each Federal Milk Market Order may present data differently while maintaining confidentiality. Differences among the maps reflect this.  
 \*FO 1 data are rounded to 1,000 pounds based on FO 1 reporting format.

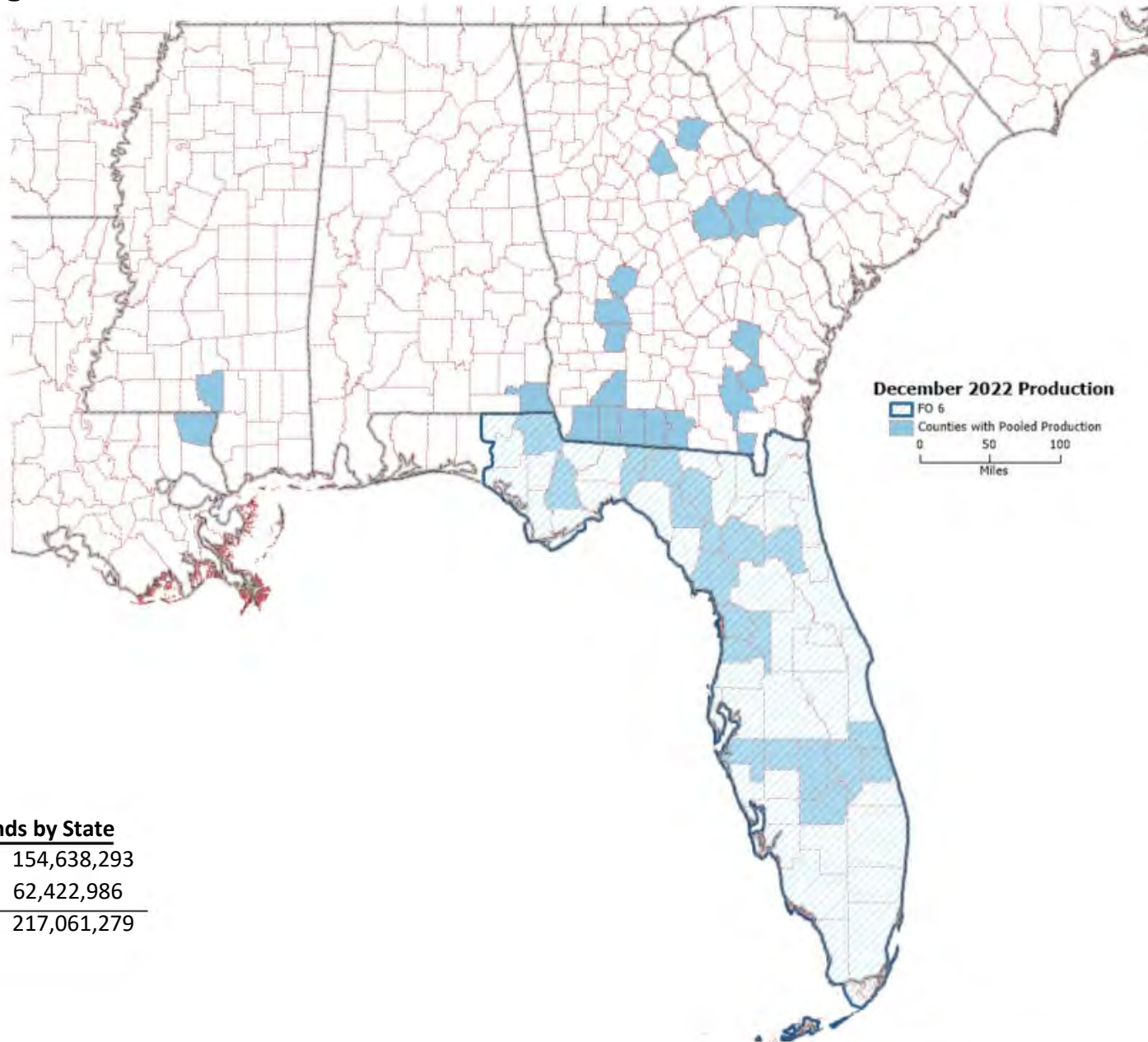
Producer Milk by County - December 2022  
 Appalachian Marketing Area – FO 5



Restricted states include: Alabama, Florida, Illinois, Kansas, New Jersey, New Mexico, New York, Oklahoma

Each Federal Milk Market Order may present data differently while maintaining confidentiality. Differences among the maps reflect this.

Producer Milk by County - December 2022  
 Florida Marketing Area – FO 6

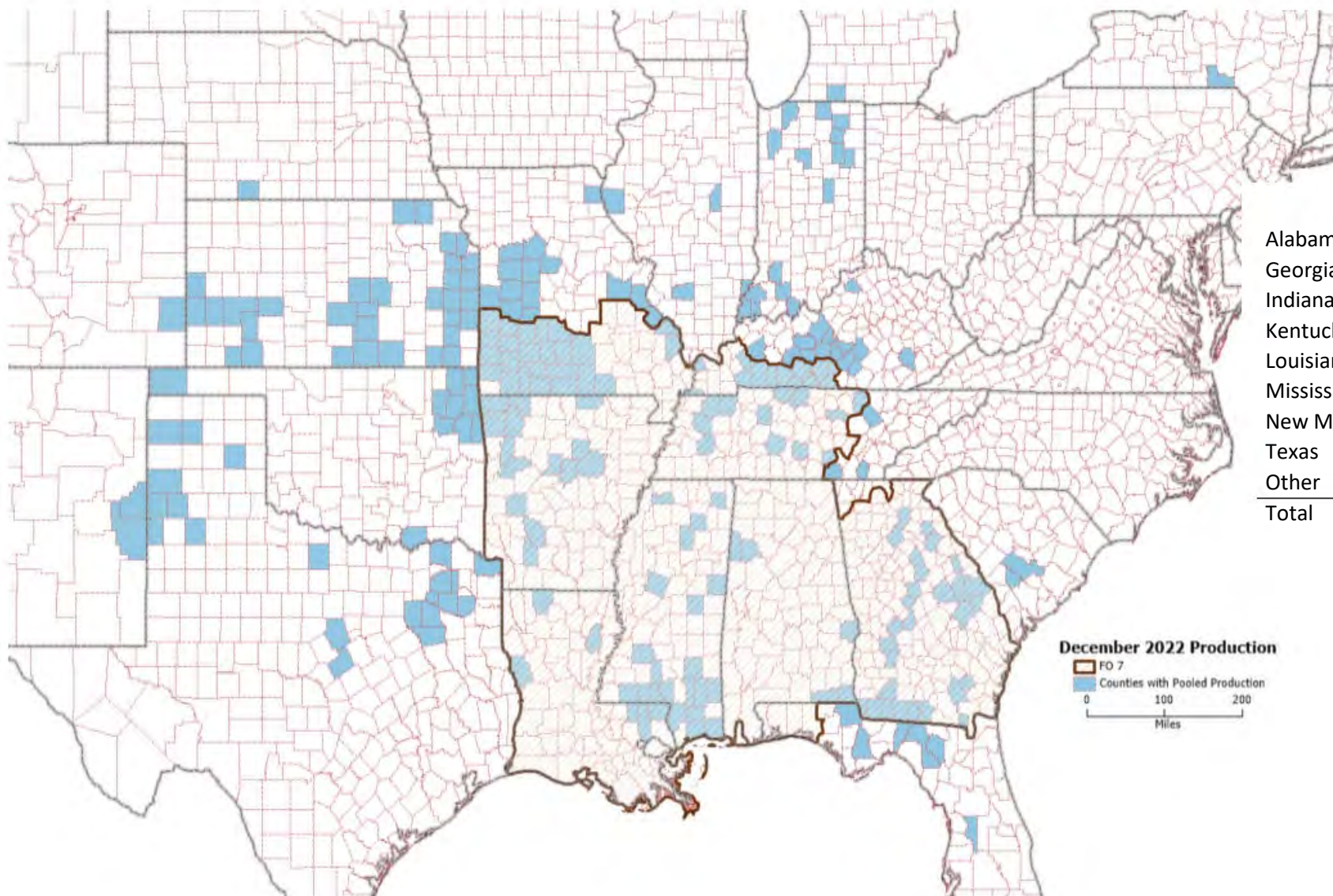


<b>Total Pounds by State</b>	
Florida	154,638,293
Other	62,422,986
<b>Total</b>	<b>217,061,279</b>

Restricted states include: Alabama, Georgia, Louisiana, and Mississippi

Each Federal Milk Market Order may present data differently while maintaining confidentiality. Differences among the maps reflect this.

Producer Milk by County - December 2022  
 Southeast Marketing Area – FO 7



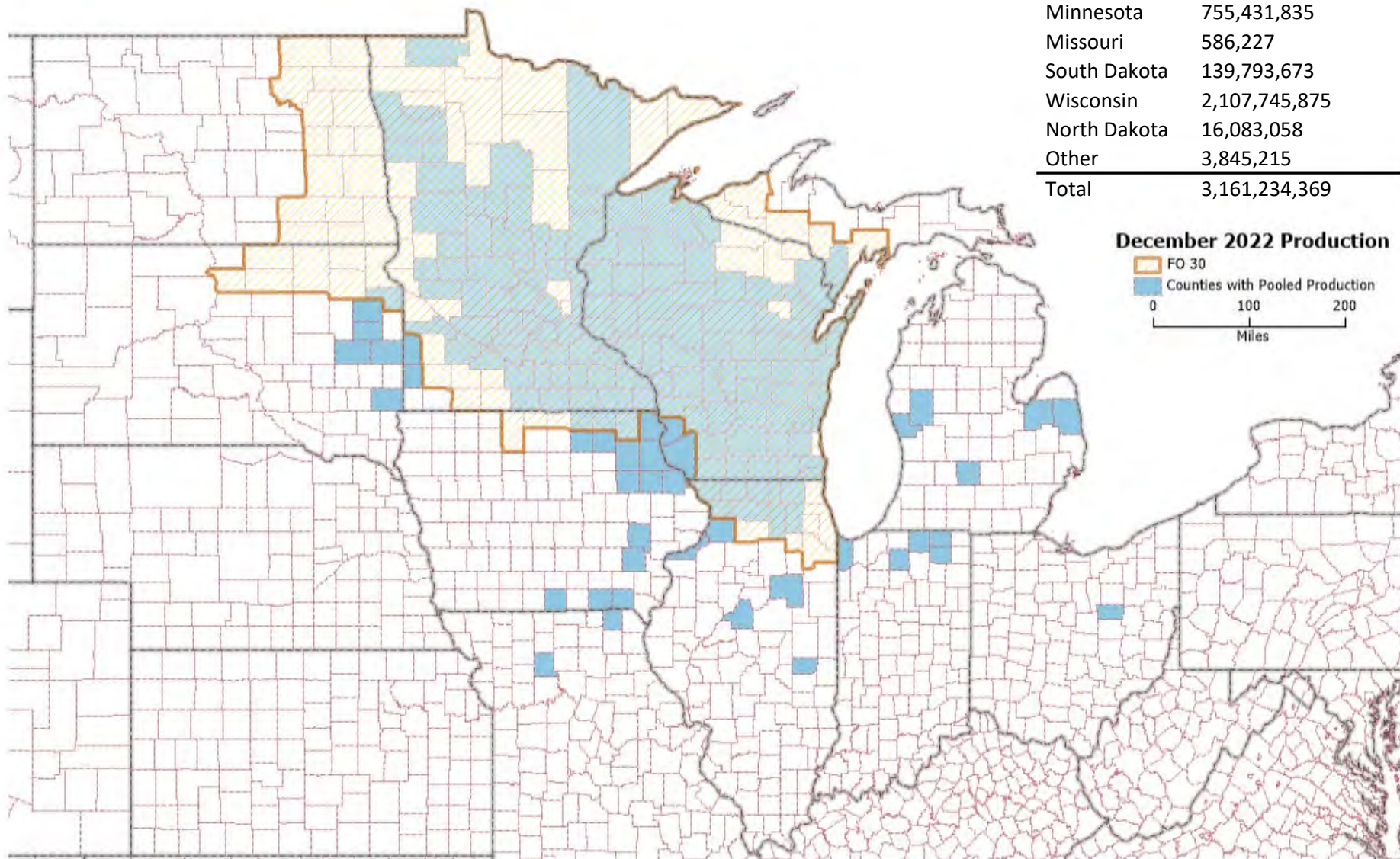
<b>Total Pounds by State</b>	
Alabama	1,027,040
Georgia	65,308,460
Indiana	37,356,648
Kentucky	24,600,459
Louisiana	8,705,355
Mississippi	6,859,385
New Mexico	2,900,545
Texas	43,792,903
Other	128,688,261
<b>Total</b>	<b>319,239,056</b>

Restricted states include: Arkansas, Colorado, Florida, Illinois, Kansas, Michigan, Missouri, Nebraska, New York, Oklahoma, South Carolina, Tennessee

Each Federal Milk Market Order may present data differently while maintaining confidentiality. Differences among the maps reflect this.

Producer Milk by County - December 2022  
 Upper Midwest Marketing Area – FO 30

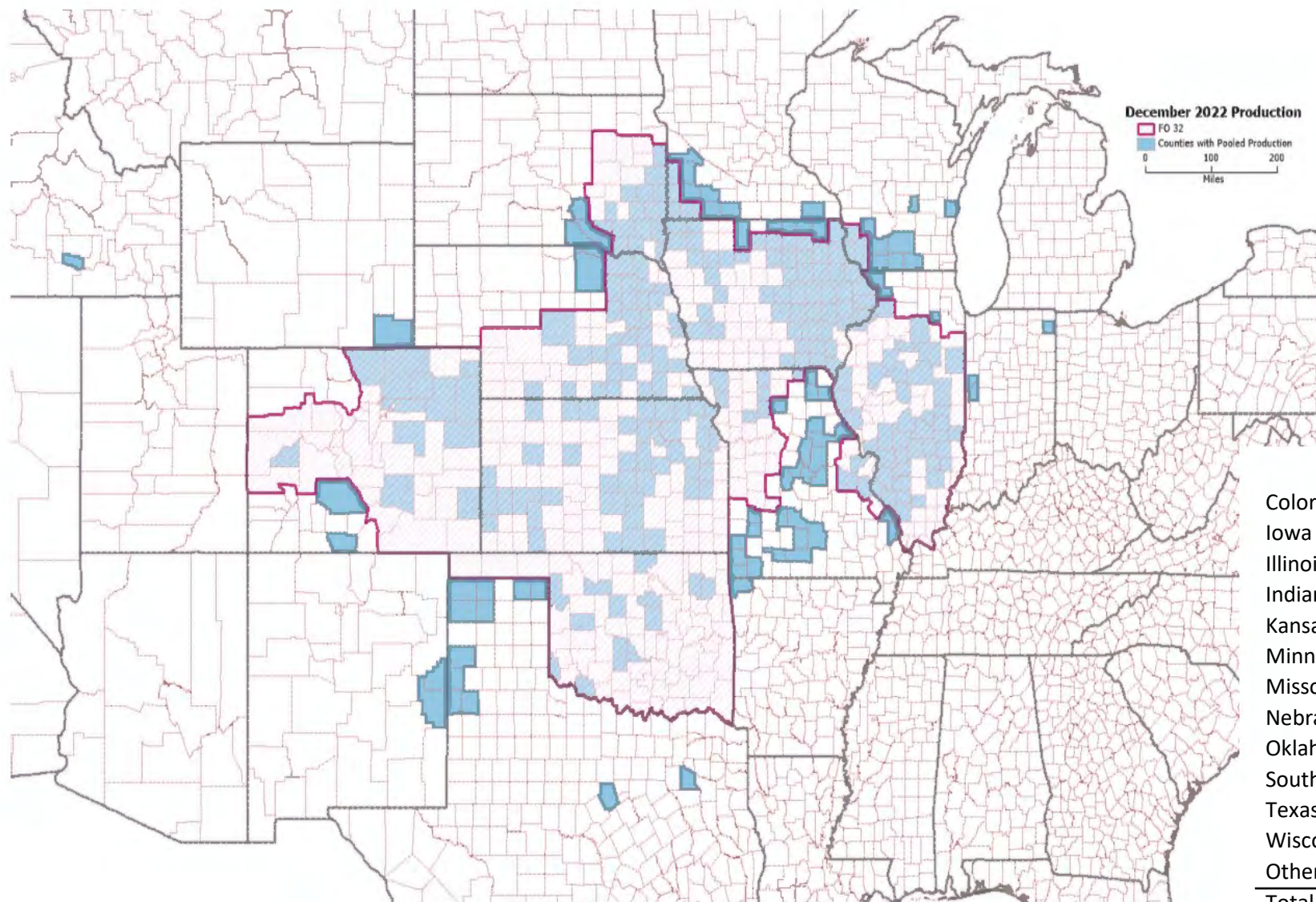
<b>Total Pounds by State</b>	
Illinois	41,324,628
Indiana	5,412,985
Iowa	86,237,491
Michigan	4,773,382
Minnesota	755,431,835
Missouri	586,227
South Dakota	139,793,673
Wisconsin	2,107,745,875
North Dakota	16,083,058
Other	3,845,215
<b>Total</b>	<b>3,161,234,369</b>



Restricted states include: Ohio, Texas

Each Federal Milk Market Order may present data differently while maintaining confidentiality. Differences among the maps reflect this.

Producer Milk by County - December 2022  
 Central Marketing Area – FO 32

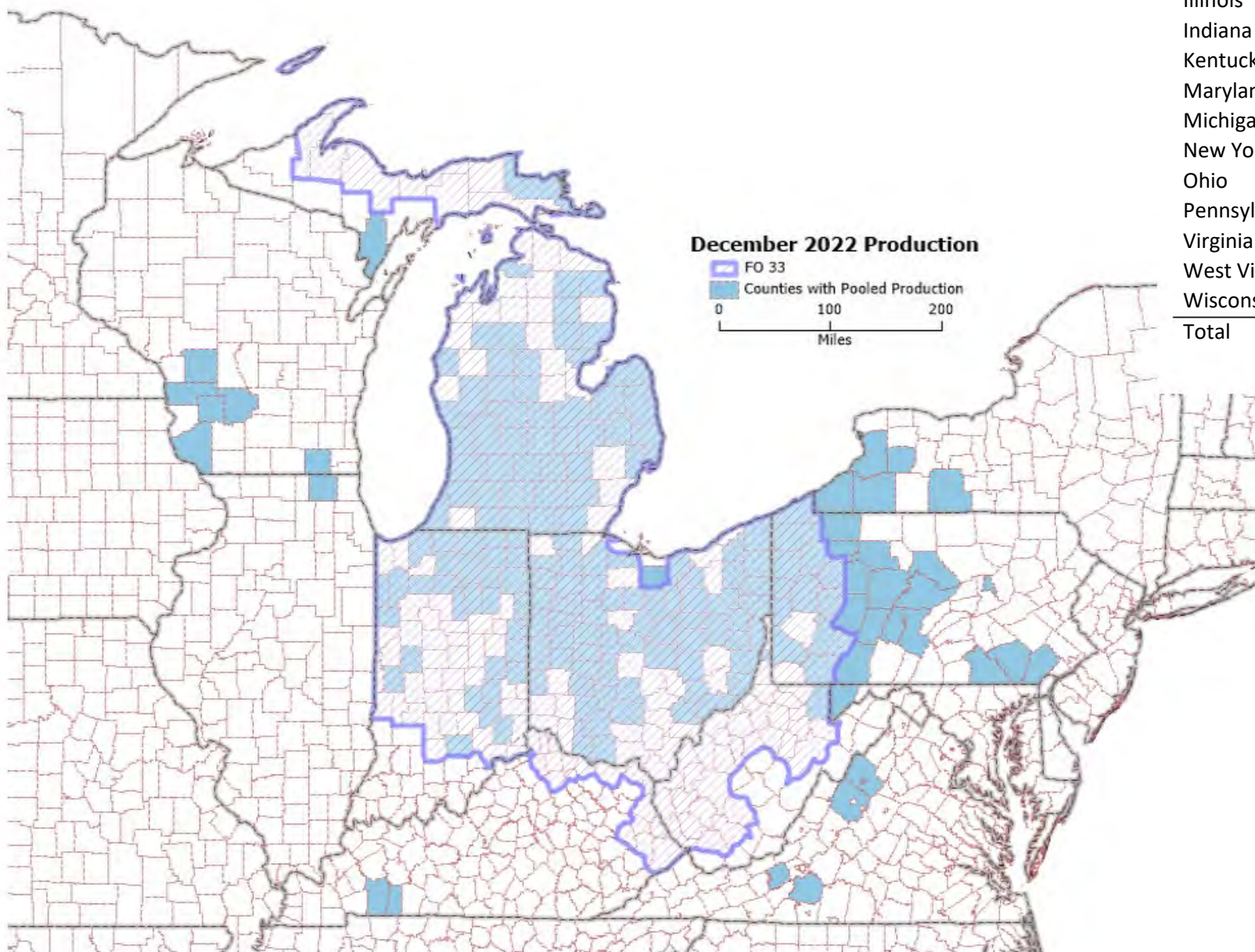


<b>Total Pounds by State</b>	
Colorado	400,819,929
Iowa	276,622,448
Illinois	68,294,633
Indiana	921,727
Kansas	69,663,063
Minnesota	23,239,561
Missouri	19,000,566
Nebraska	78,480,123
Oklahoma	39,037,160
South Dakota	40,253,539
Texas	153,884,667
Wisconsin	33,801,835
Other	115,303,232
<b>Total</b>	<b>1,319,322,483</b>

Restricted states include: Arkansas, Idaho, New Mexico, Wyoming

Each Federal Milk Market Order may present data differently while maintaining confidentiality. Differences among the maps reflect this.

Producer Milk by County - December 2022  
 Mideast Marketing Area – FO 33

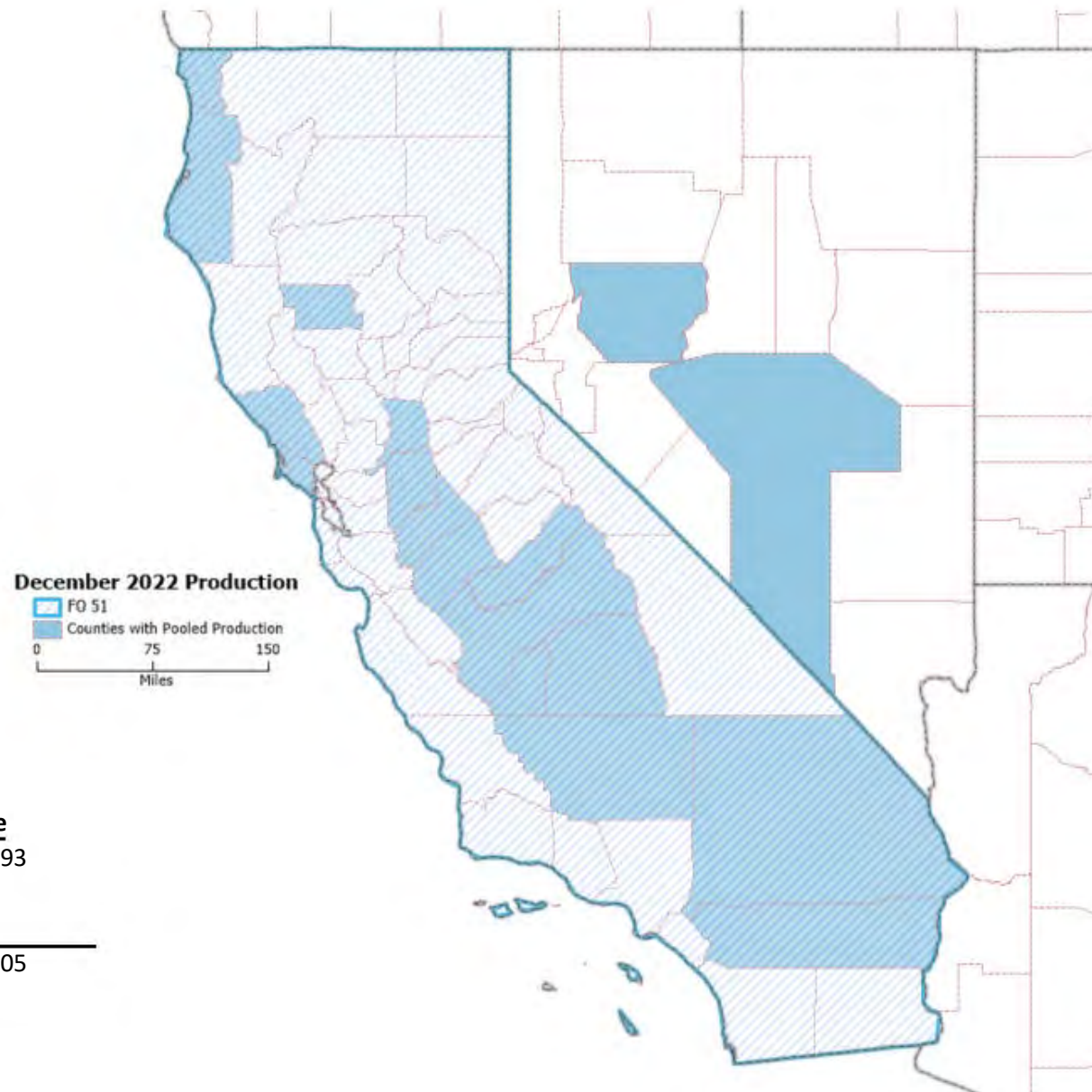


<u>Total Pounds by State</u>	
Illinois	1,278,674
Indiana	203,775,188
Kentucky	1,001,419
Maryland	2,829,449
Michigan	655,817,924
New York	43,690,548
Ohio	366,673,990
Pennsylvania	82,744,937
Virginia	4,455,655
West Virginia	706,768
Wisconsin	21,617,100
<b>Total</b>	<b>1,384,591,652</b>

Each Federal Milk Market Order may present data differently while maintaining confidentiality. Differences among the maps reflect this.



Producer Milk by County - December 2022  
 California Marketing Area – FO 51



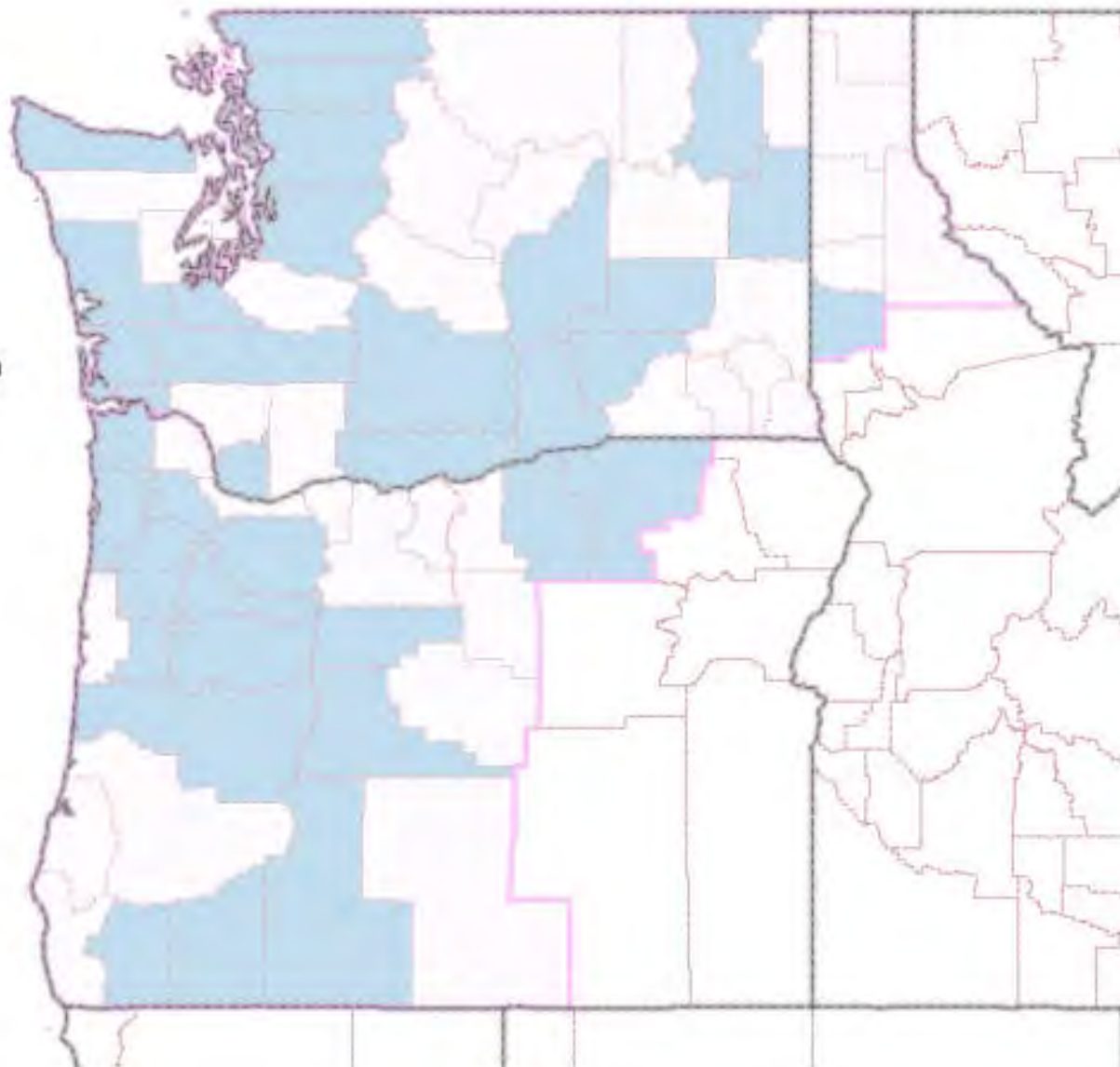
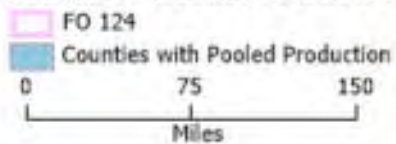
<b>Total Pounds by State</b>	
California	1,992,953,993
Nevada	25,288,932
Other	2,391,680
<b>Total</b>	<b>2,020,634,605</b>

Restricted states include: New Mexico, Oregon, Texas

Each Federal Milk Market Order may present data differently while maintaining confidentiality. Differences among the maps reflect this.

Producer Milk by County - December 2022  
 Pacific Northwest Marketing Area – FO 124

**December 2022 Production**



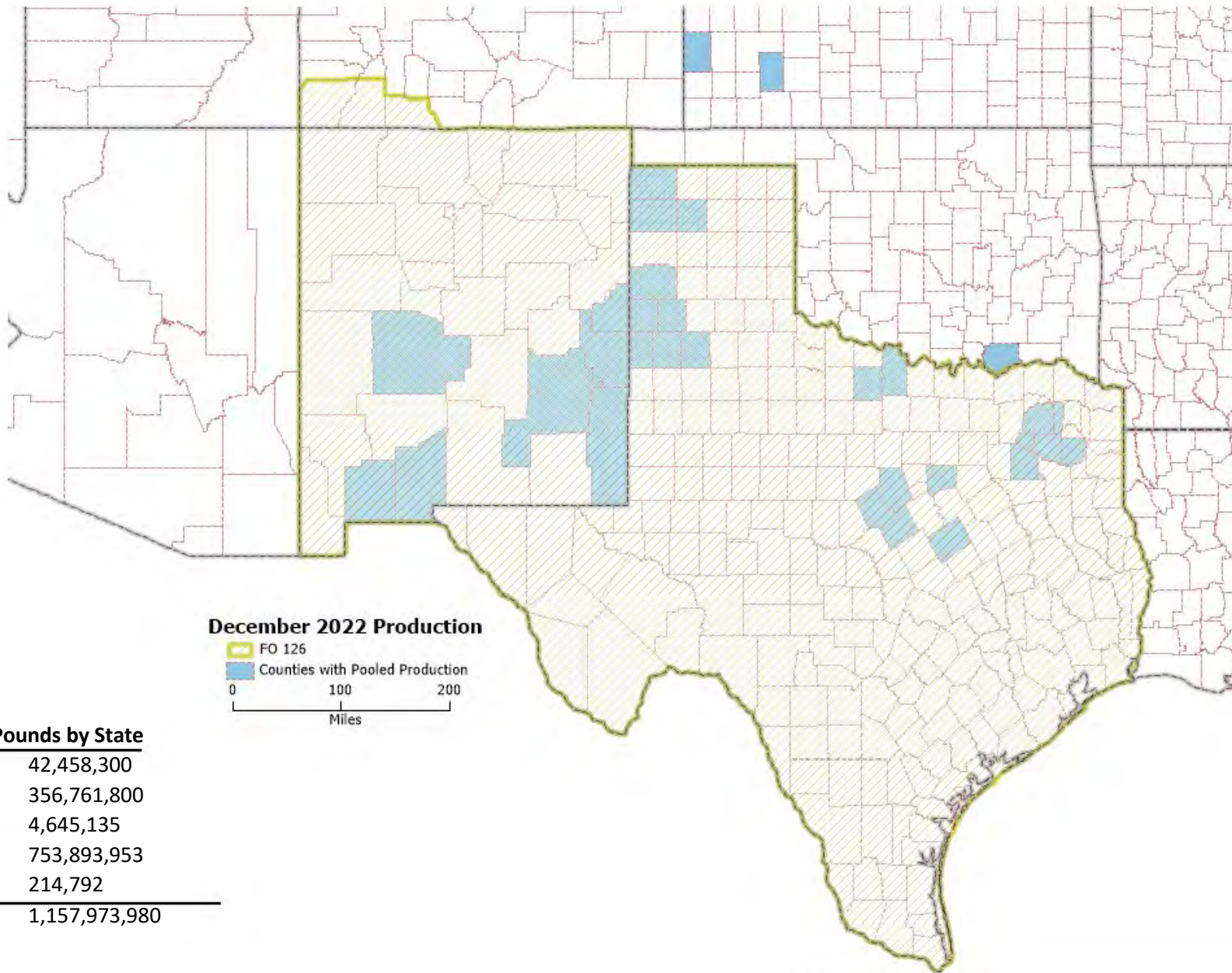
**Total Pounds by State**

Oregon	184,416,614
Washington <sup>2/</sup>	415,368,566
<b>Total</b>	<b>599,785,180</b>

<sup>2/</sup>Restricted ID included with WA

Each Federal Milk Market Order may present data differently while maintaining confidentiality. Differences among the maps reflect this.

Producer Milk by County - December 2022  
 Southwest Marketing Area – FO 126

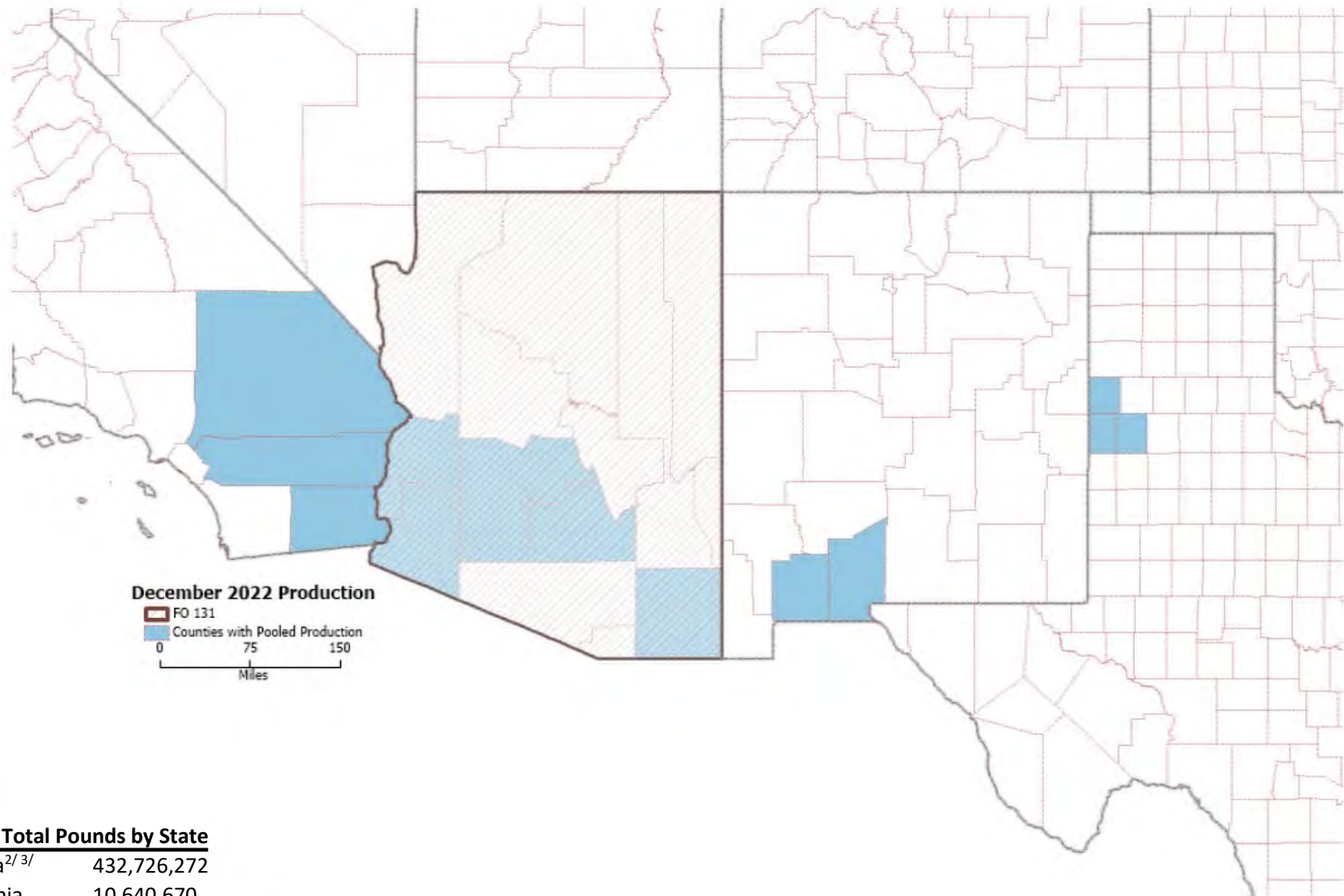


<b>Total Pounds by State</b>	
Kansas	42,458,300
New Mexico	356,761,800
Oklahoma	4,645,135
Texas	753,893,953
Other	214,792
<b>Total</b>	<b>1,157,973,980</b>

Restricted states include: Arkansas, Colorado

Each Federal Milk Market Order may present data differently while maintaining confidentiality. Differences among the maps reflect this.

Producer Milk by County - December 2022  
 Arizona Marketing Area – FO 131



**Total Pounds by State**

Arizona <sup>2/3/</sup>	432,726,272
California	10,640,670
<b>Total</b>	<b>443,366,942</b>

<sup>2/</sup>Restricted TX included in AZ

<sup>3/</sup>Restricted NM included in AZ

Each Federal Milk Market Order may present data differently while maintaining confidentiality. Differences among the maps reflect this.