

PRIORITIZING PLANT PESTS AND PROGRAMS IN APHIS

Plant Protection and Quarantine
Animal and Plant Health Inspection Service
U.S. Department of Agriculture
September 15, 2015



United States Department of Agriculture

APHIS Safeguarding Continuum

Facilitate trade

**SAFE
TRADE**

Protect resources

Analytical Spectrum

**Ex-ante analysis:
Evaluation of Potential Impacts**

**Ex-post analysis:
Evaluation of Observed Impacts**

Pests not introduced

Newly introduced

Established/
'limited distribution'

What exotic pests should we be concerned about?

- Q-56;Q-37
- CAPS
- OPIP

Estimate consequences and probability of introduction (entry & establishment),

Should we do something?

- NPAG
- Pests of imminent threat

Estimate spread and expected impacts with and without mitigations

Should we continue?

- OPAG
- DEEP

Evaluate program effectiveness based on observed impacts

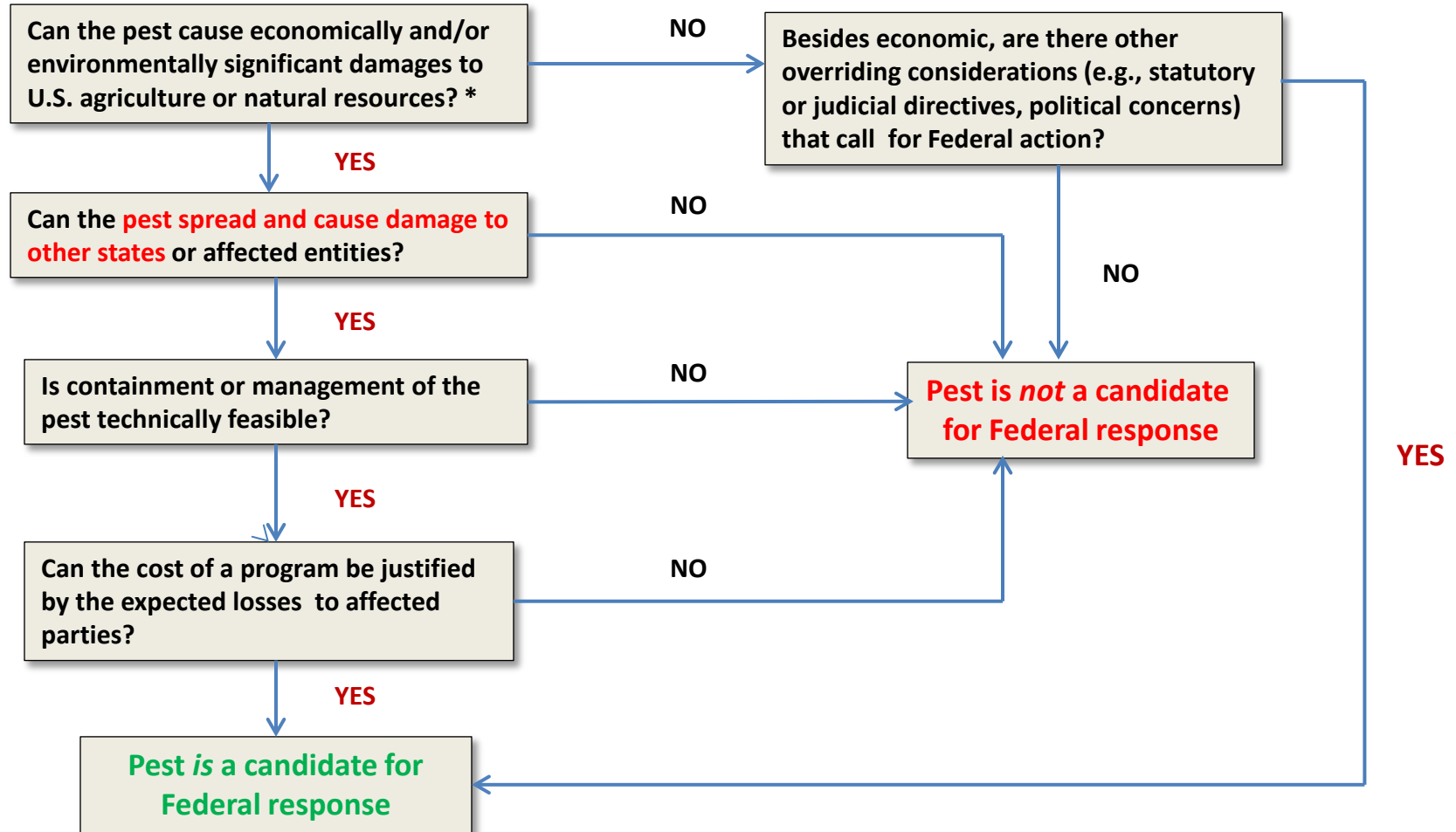


New Model for Evaluating Impacts

- Multiple choice yes/no questions (criteria) predictive of impacts
- Selected factors considered in evaluating expected impacts:
 - unmitigated damage
 - frequency/severity of outbreaks
 - current production practices
 - private cost of control
 - research



DECISION TREE FOR FEDERAL ACTION



* Economic significance is based on established thresholds for acceptable level of risk.