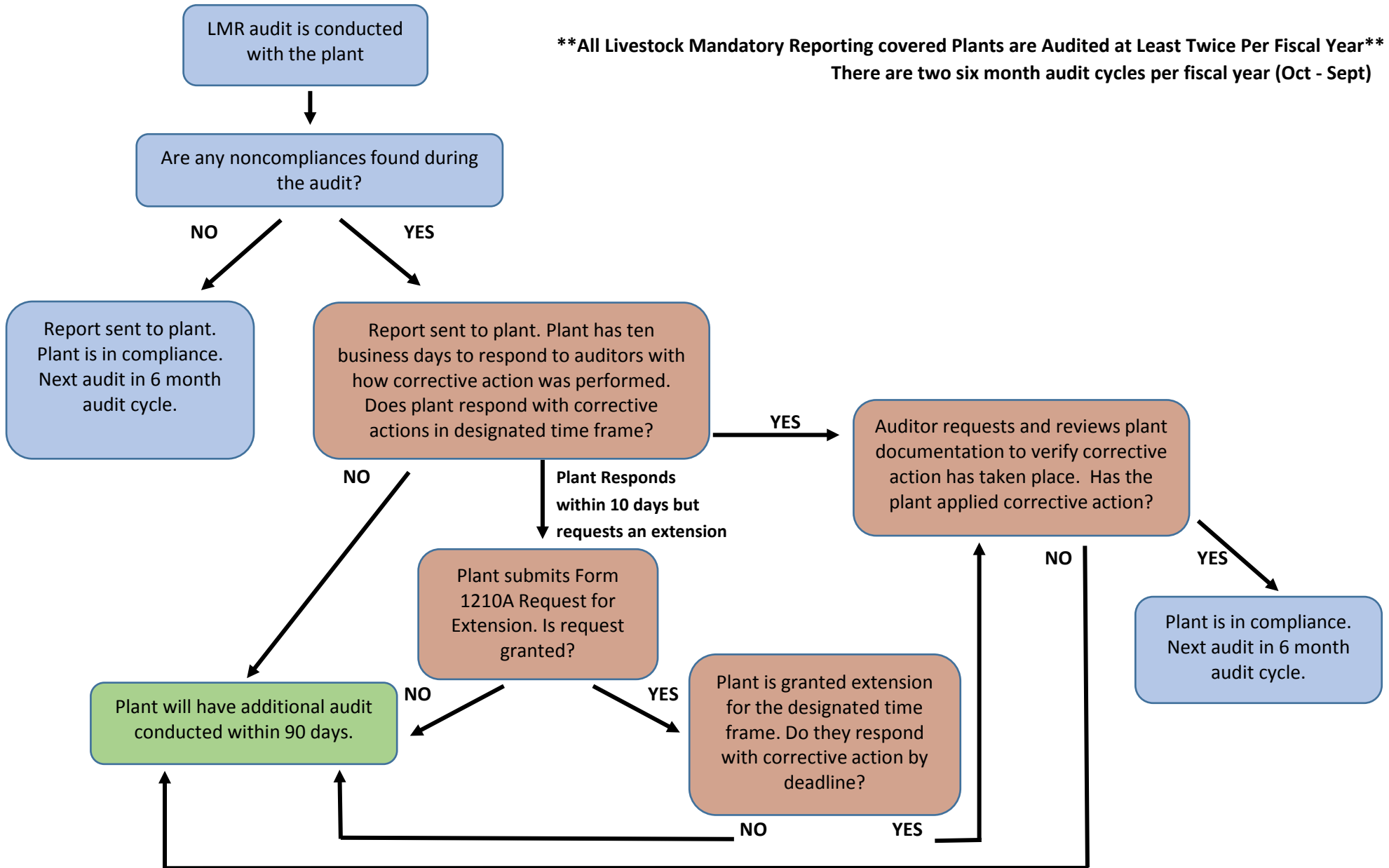




### Livestock Mandatory Reporting (LMR) Compliance Audit Process

**\*\*All Livestock Mandatory Reporting covered Plants are Audited at Least Twice Per Fiscal Year\*\***  
There are two six month audit cycles per fiscal year (Oct - Sept)





**Agricultural Marketing Service**  
**Livestock, Poultry, and Grain Market News Division**

---