

\*\*\*\*\* LAMB GRADING HISTORICAL RECORDS \*\*\*\*\*  
(THOUSAND POUNDS)

CY YEAR	TOTAL POUNDS GRADED	QUALITY GRADES										% OF FEDERAL SLAUGHTER LAMB	YIELD GRADES										FOOTNOTES
		PRIME	%	CHOICE	%	GOOD	%	UTILITY	%	CULL	%		Y1	%	Y2	%	Y3	%	Y4	%	Y5	%	
1930	2,470																						1/
1931	4,157																						1/
1932	7,610																						1/
1933	8,013																						1/
1934	9,352																						1/
1935	17,538																						1/
1936	19,021																						1/
1937	23,765																						1/
1938	28,015																						1/
1939	24,214																						1/
1940	24,765																						1/
1941	32,186																						1/
1942	78,102																						1/; 2/
1943	990,772																						1/; 2/
1944	1,007,449			283,490	28.1%	390,281	38.7%	212,098	21.1%	121,580	12.1%	106.5%											1/; 2/
1945	1,006,547			389,581	38.7%	352,340	35.0%	165,503	16.4%	99,123	9.8%	99.4%											1/; 2/
1946	823,021			337,745	41.0%	288,554	35.1%	124,302	15.1%	72,420	8.8%												1/; 2/
1947	208,870	66	0.03%	79,779	38.2%	96,614	46.3%	27,011	12.9%	5,400	2.6%	26.8%											1/
1948	78,610	13	0.02%	32,471	41.3%	39,159	49.8%	6,471	8.2%	496	0.6%	20.1%											1/; 3/
1949	107,633											18.3%											1/
1950	110,441											19.0%											1/
1951	365,355											71.9%											1/
1952	567,362											89.3%											1/
1953	245,133											34.5%											1/
1954	250,129											34.0%											1/
1955	242,683											32.6%											1/
1956	233,337											32.1%											1/
1957	258,804											37.3%											1/
1958	242,099											35.9%											1/; 3/
1959	256,503	3,066	1.2%	225,547	87.9%	27,890	10.9%					35.6%											1/

\*\*\*\*\* LAMB GRADING HISTORICAL RECORDS \*\*\*\*\*  
(THOUSAND POUNDS)

CY YEAR	TOTAL POUNDS GRADED	QUALITY GRADES										% OF FEDERAL SLAUGHTER LAMB	YIELD GRADES										FOOTNOTES
		PRIME	%	CHOICE	%	GOOD	%	UTILITY	%	CULL	%		Y1	%	Y2	%	Y3	%	Y4	%	Y5	%	
1960	282,111	41,311	14.6%	229,805	81.5%	10,720	3.8%	228	0.08%	47	0.02%	37.4%										1/	
1961	358,442	45,872	12.8%	292,102	81.5%	11,622	3.2%	8,775	2.45%	71	0.02%	43.8%										1/	
1962	363,004	44,377	12.2%	295,278	81.3%	9,861	2.7%	13,424	3.70%	64	0.02%	45.7%										1/	
1963	371,515	48,796	13.1%	303,153	81.6%	8,697	2.3%	10,850	2.92%	19	0.01%	49.1%										1/	
1964	363,788	55,342	15.2%	301,579	82.9%	4,773	1.3%	2,073	0.57%	21	0.01%	51.7%										1/	
1965	351,199	59,689	17.0%	288,393	82.1%	3,014	0.9%	91	0.03%	12	0.00%	55.0%										1/; 4/	
1966	385,577	58,634	15.2%	322,556	83.7%	3,040	0.8%	1,347	0.35%			60.3%										1/; 5/	
1967	401,780	57,733	14.4%	338,093	84.1%	2,813	0.7%	3,141	0.78%			63.2%										1/	
1968	392,424	47,263	12.0%	341,857	87.1%	2,276	0.6%	1,028	0.26%			66.3%										1/	
1969	373,057	39,063	10.5%	329,355	88.3%	2,120	0.6%	2,519	0.68%			69.1%										1/	
1970	400,794	42,565	10.6%	352,875	88.0%	2,671	0.7%	2,683	0.67%			74.2%										1/	
1971	418,038	41,080	9.8%	373,635	89.4%	1,642	0.4%	1,681	0.40%			76.8%										1/	
1972	396,606	47,509	12.0%	347,268	87.6%	968	0.2%	861	0.22%			74.4%										1/; 6/; 7/	
1973	366,650	59,666	16.3%	305,757	83.4%	1,220	0.3%	7	0.00%			72.7%										1/	
1974	332,407	42,264	12.7%	289,040	87.0%	742	0.2%	361	0.11%			73.2%										1/	
1975	295,564	35,556	12.0%	259,740	87.9%	263	0.1%	5	0.00%			74.1%										1/	
1976	268,301	52,663	19.6%	215,374	80.3%	264	0.1%					73.9%										1/	
1977	265,281	52,208	19.7%	212,879	80.2%	194	0.1%					77.9%										1/	
1978	237,970	52,872	22.2%	184,390	77.5%	706	0.3%	2	0.00%			82.9%										1/	
1979	225,914	51,476	22.8%	174,314	77.2%	122	0.1%	2	0.00%			80.7%										1/	
1980	224,708	47,751	21.3%	176,762	78.7%	195	0.1%																
1981																							
1982																							
1983	153,692	19,977	13.0%	133,318	86.7%	397	0.258%					96.7%											
1984	299,064	37,402	12.5%	260,660	87.2%	1,002	0.335%					87.4%											
1985	295,101	33,605	11.4%	259,572	88.0%	1,924	0.652%					92.5%											
1986	256,225	37,584	14.7%	218,582	85.3%	59	0.023%					83.2%											
1987	262,070	29,697	11.3%	232,370	88.7%	3	0.001%					91.5%											
1988	283,091	34,344	12.1%	248,630	87.8%	117	0.041%					93.6%											
1989	295,049	34,131	11.6%	260,759	88.4%	159	0.054%					93.9%											

\*\*\*\*\* LAMB GRADING HISTORICAL RECORDS \*\*\*\*\*  
(THOUSAND POUNDS)

CY YEAR	TOTAL POUNDS GRADED	QUALITY GRADES										% OF FEDERAL SLAUGHTER LAMB	YIELD GRADES										FOOTNOTES
		PRIME	%	CHOICE	%	GOOD	%	UTILITY	%	CULL	%		Y1	%	Y2	%	Y3	%	Y4	%	Y5	%	
1990	294,443	36,800	12.5%	257,623	87.5%	20	0.007%					89.4%											
1991	302,833	29,518	9.7%	273,263	90.2%	52	0.017%					87.5%											
1992	285,209	27,092	9.5%	257,606	90.3%	511	0.179%					90.7%	14	10.0%	58	40.6%	59	41.0%	11	7.4%	2	1.0%	8/
1993	272,996	22,873	8.4%	250,116	91.6%	7	0.003%					89.9%	27	10.0%	106	38.7%	110	40.2%	24	8.9%	6	2.2%	
1994	240,433	22,433	9.3%	218,000	90.7%							87.5%	27	11.2%	98	40.7%	94	38.9%	19	8.0%	3	1.2%	
1995	221,762	23,128	10.4%	198,634	89.6%							85.4%	26	11.5%	94	42.3%	84	38.0%	16	7.2%	2	1.0%	
1996	212,020	17,102	8.1%	194,917	91.9%	1	0.000%					87.8%	26	12.1%	87	41.2%	81	38.2%	15	7.1%	3	1.4%	
1997	205,946	17,218	8.4%	188,678	91.6%	50	0.024%					87.2%	21	10.1%	84	40.9%	83	40.2%	15	7.5%	3	1.4%	
1998	210,247	17,414	8.3%	192,833	91.7%							90.7%	25	12.0%	91	43.1%	80	38.1%	12	5.7%	2	1.0%	
1999	200,242	17,813	8.9%	182,429	91.1%							89.2%	20	9.9%	90	45.0%	77	38.2%	12	5.8%	2	1.1%	
2000	183,741	11,212	6.1%	172,529	93.9%							86.6%	13	7.0%	80	43.3%	75	40.5%	15	7.9%	2	1.3%	
2001	182,576	10,970	6.0%	171,606	94.0%							88.4%	8	4.3%	65	35.9%	78	42.9%	24	12.9%	7	4.0%	
2002	169,363	9,350	5.5%	160,013	94.5%							85.3%	11	6.2%	72	42.4%	68	40.1%	15	9.0%	4	2.2%	
2003	156,650	9,958	6.4%	146,692	93.6%							85.0%	8	5.0%	59	37.7%	69	43.8%	18	11.2%	4	2.2%	
2004	146,624	8,559	5.8%	138,065	94.2%							84.0%	7	4.5%	52	35.1%	68	46.1%	18	11.9%	4	2.4%	
2005	139,549	10,236	7.3%	129,314	92.7%							81.5%	7	5.1%	45	32.5%	65	46.8%	18	12.5%	4	3.1%	
2006	135,373	10,972	8.1%	124,402	91.9%							79.7%	6	4.2%	43	32.1%	64	47.2%	18	13.3%	4	3.3%	
2007	131,824	10,323	7.8%	121,491	92.2%							79.2%	5	4.2%	43	32.5%	63	48.1%	16	12.2%	4	3.0%	
2008	123,270	11,086	9.0%	112,184	91.0%							77.4%	6	4.6%	39	31.5%	58	47.1%	17	13.6%	4	3.1%	
2009	114,757	10,602	9.2%	104,155	90.8%							74.3%	5	4.0%	39	33.6%	52	45.0%	16	13.6%	4	3.7%	
2010	106,222	7,423	7.0%	98,799	93.0%							73.9%	5	4.6%	40	37.8%	45	42.6%	13	12.5%	3	2.5%	
2011	97,984	7,062	7.2%	90,922	92.8%							74.2%	6	5.7%	32	32.7%	42	42.7%	15	15.7%	3	3.3%	
2012	98,523	8,282	8.4%	90,241	91.6%							70.9%	5	5.1%	28	28.7%	36	36.2%	17	17.4%	12	12.6%	
2013	91,834	7,974	8.7%	83,860	91.3%							67.3%	7	7.2%	33	36.4%	32	35.3%	13	13.6%	7	7.5%	
2014	93,051	5,902	6.3%	87,149	93.7%							67.4%	5	5.5%	31	33.4%	38	41.3%	13	14.3%	5	5.5%	
2015	84,301	5,065	6.0%	79,236	94.0%							64.6%	4	5.3%	24	28.9%	35	41.4%	14	16.2%	7	8.2%	
2016	79,780	5,516	6.9%	74,264	93.1%							61.1%	5	6.5%	24	30.3%	32	39.7%	13	15.9%	6	7.6%	
2017	73,768	5,902	8.0%	67,866	92.0%							58.8%	4	5.5%	22	30.4%	31	42.0%	11	15.2%	5	6.9%	
2018	75,492	6,959	9.2%	68,533	90.8%							57.4%	4	4.9%	20	26.9%	30	39.4%	14	18.1%	8	10.7%	
2019	70,379	4,816	6.8%	65,563	93.2%							56.1%	3	4.5%	18	25.6%	29	41.8%	14	19.3%	6	8.8%	
2020	57,670	4,091	7.1%	53,579	92.9%							50.1%	3	4.4%	17	29.3%	26	44.9%	9	16.4%	2	5.0%	
2021	56,562	4,645	8.2%	51,915	91.8%							50.4%	3	6.1%	21	37.2%	23	41.1%	7	12.7%	2	2.9%	

FOOTNOTES

1/ Grade designations are those in use at time data were reported. Official standards for grades

Information Provided By:  
U.S. Department of Agriculture  
Agricultural Marketing Service  
Livestock, Poultry and Seed Program  
Quality Assessment Division

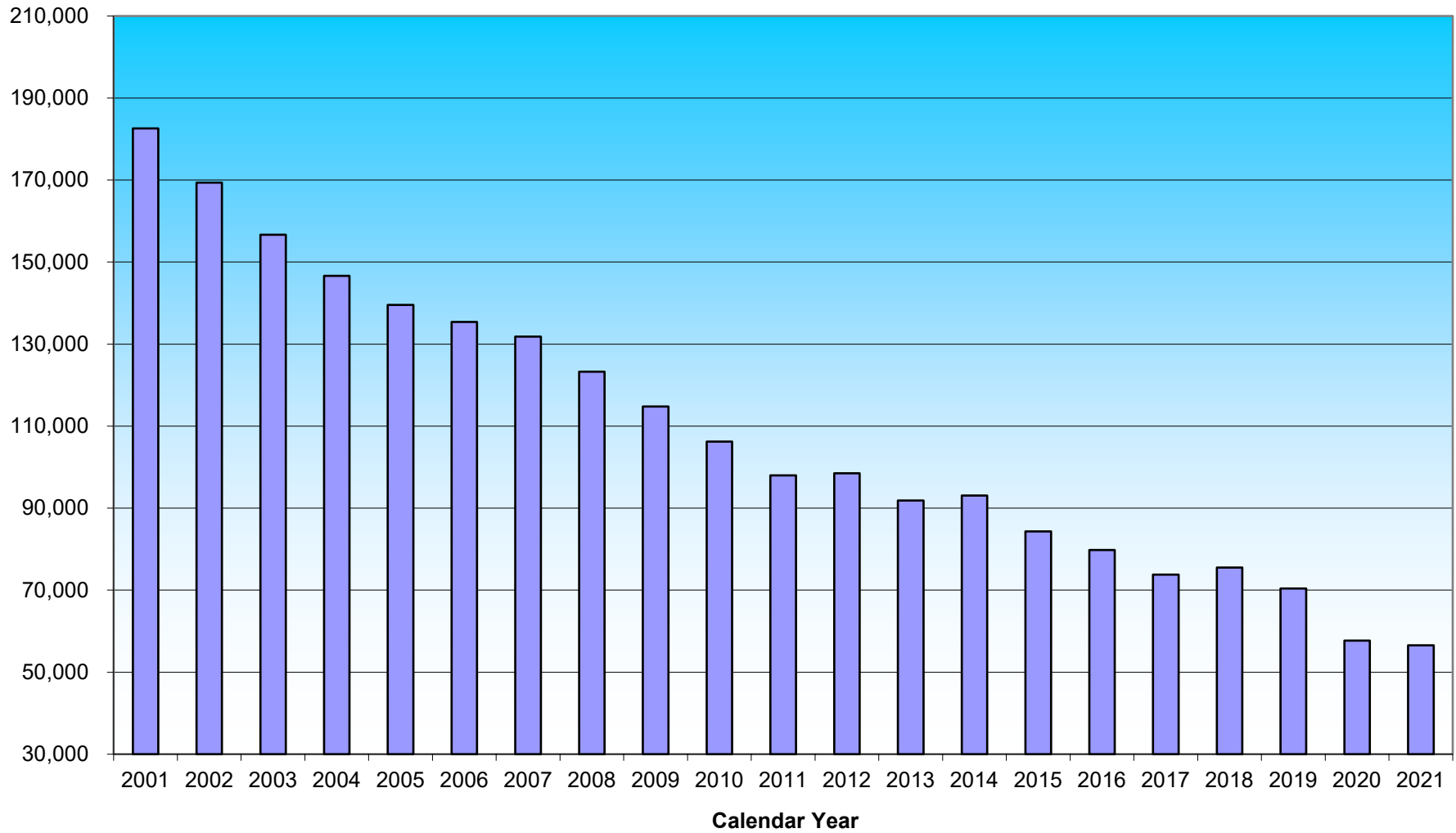
\*\*\*\*\* LAMB GRADING HISTORICAL RECORDS \*\*\*\*\*  
(THOUSAND POUNDS)

CY YEAR	TOTAL POUNDS GRADED	QUALITY GRADES										% OF FEDERAL SLAUGHTER LAMB	YIELD GRADES										FOOTNOTES
		PRIME	%	CHOICE	%	GOOD	%	UTILITY	%	CULL	%		Y1	%	Y2	%	Y3	%	Y4	%	Y5	%	

of lamb and mutton were made effective February 16, 1931. In October 1940, the grade designations Medium and Common were changed to Commercial and Utility, respectively. In April 1951, Prime and Choice grades were combined and designated as Prime, the Good grade was renamed Choice, and changes were made in the other grades. In February 1957, the standards were again amended by changing the quality requirements. The standards were also amended in March 1960 to modify the minimum requirements for Prime and Choice grades by lowering the average fatness for these grades and by certain other ways regarding the conformation and quality factors.

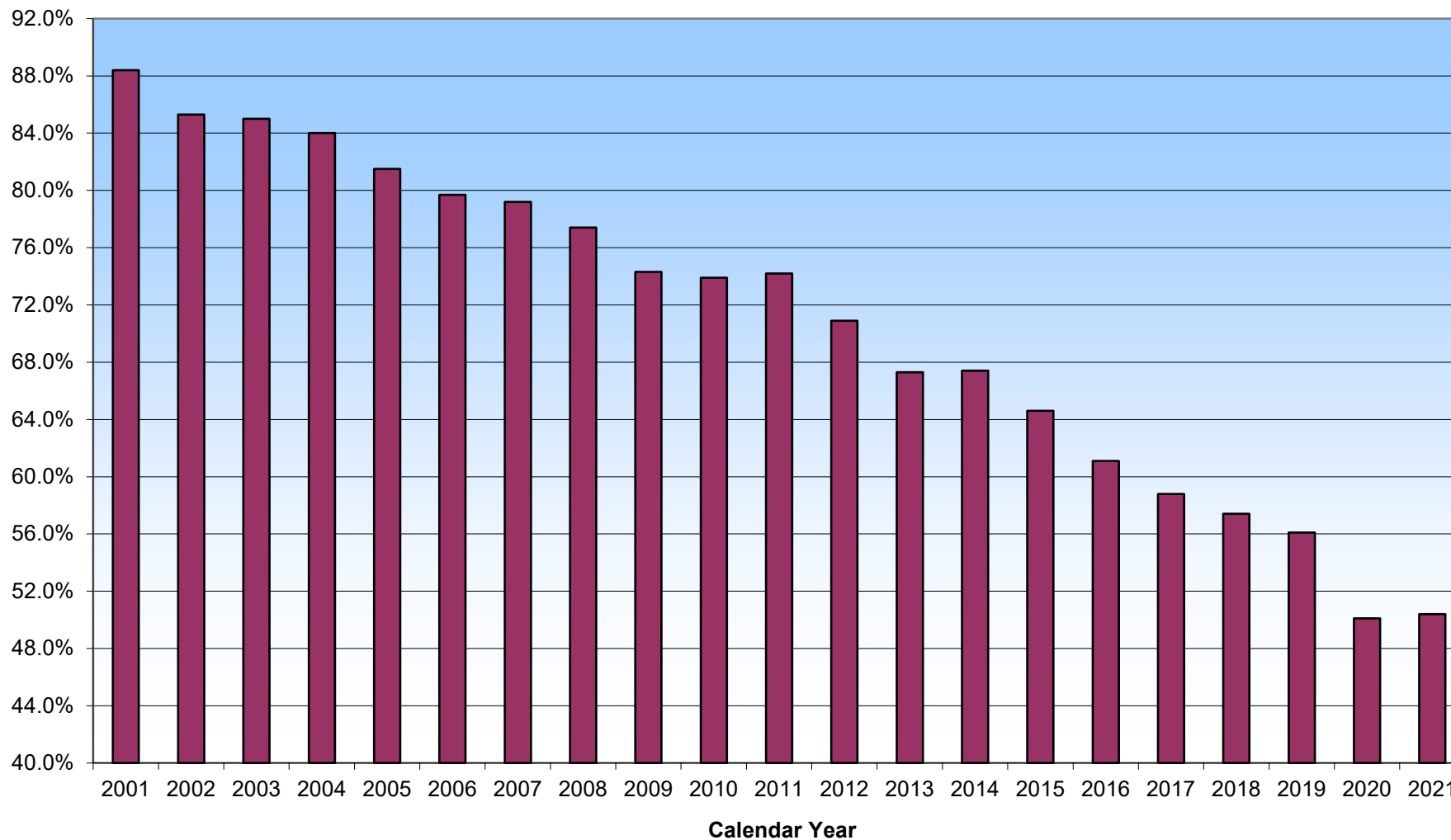
- 2/ Included in total is lamb officially certified for CCC: 1942--26,031,000 lbs.; 1943--122,225,000 lbs.; 1944--59,029,000 lbs.; 1945--17,744,000 lbs.; 1946--10,787,000 lbs.
- 3/ Grade breakdown is for 6 months only. Grade breakdown is not available from July 1948 through June 1958.  
  
Compulsory grading of lamb and mutton carcasses was required from April 10, 1943, until October 16, 1946, and again from May 7, 1951, until February 5, 1933.
- 4/ 1965--January 1 through December 18 as reported in Market News and Annual 333. (Adj. for calendar year 56.3--by JL)
- 5/ Commercial production 1966 to date converted to 4-week (20-day) periods based on weekly F.I. lamb and mutton production estimates and the relation of monthly F.I. lamb and mutton production to total commercial production. Commercial production figures for the year are from Statistical Bulletin 333.
- 6/ Beginning with 1972, volume graded is estimated on the basis of a January 1 - December 31 year.
- 7/ Breakdown by grade based on percent of each grade is of total volume graded for period 7/1 - 12/31.
- 8/ Yield Grading of Lambs begins in 1992.

**USDA Graded Lamb - 2001 to 2021  
(Thousand Pounds)**



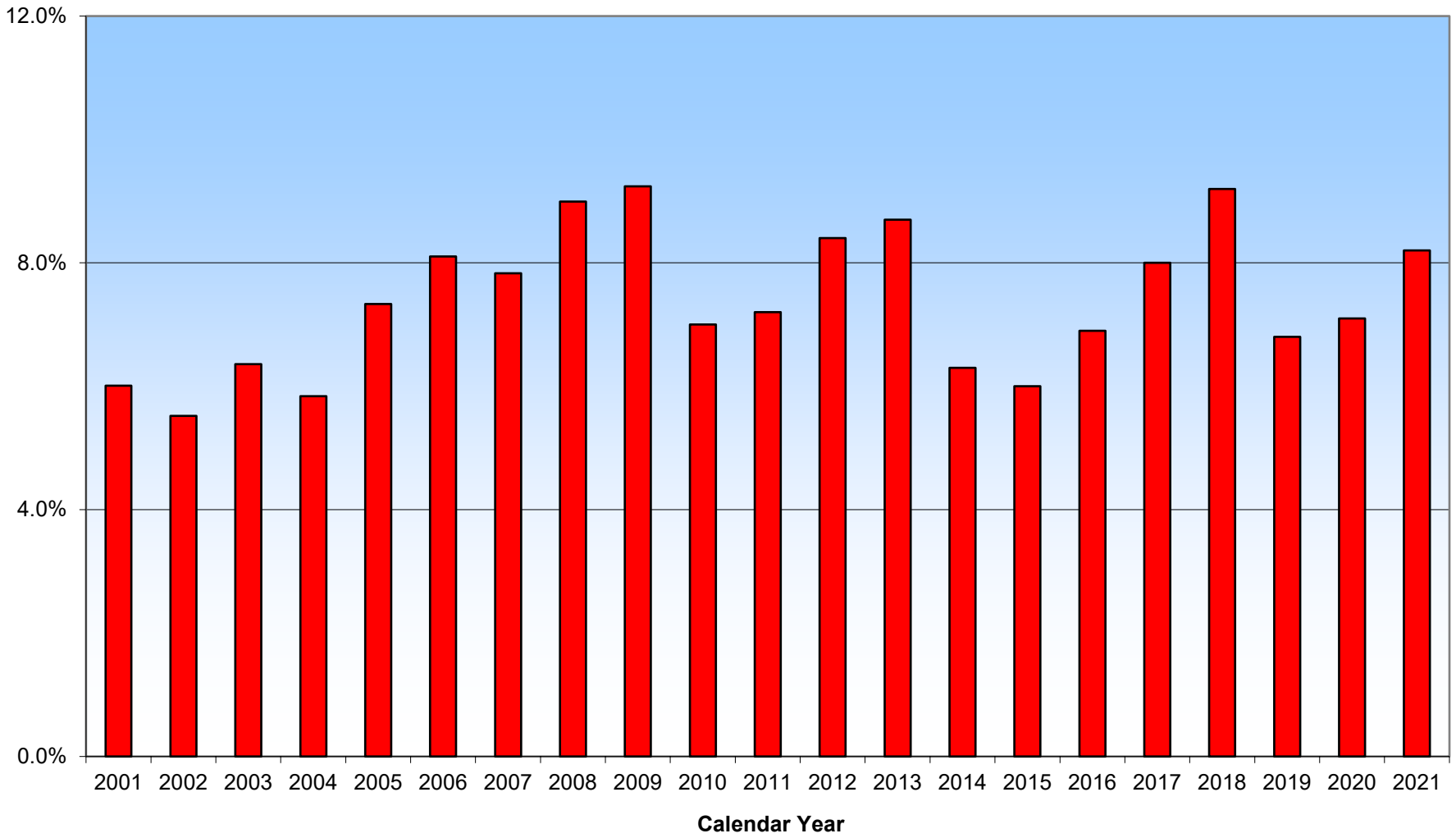
Information Provided By:  
U.S. Department of Agriculture  
Marketing and Regulatory Programs  
Agricultural Marketing Service  
Livestock, Poultry and Seed Program  
Grading and Verification Division

### Federal Lamb Slaughter - 2001 to 2021 (Percentage of Total Graded)



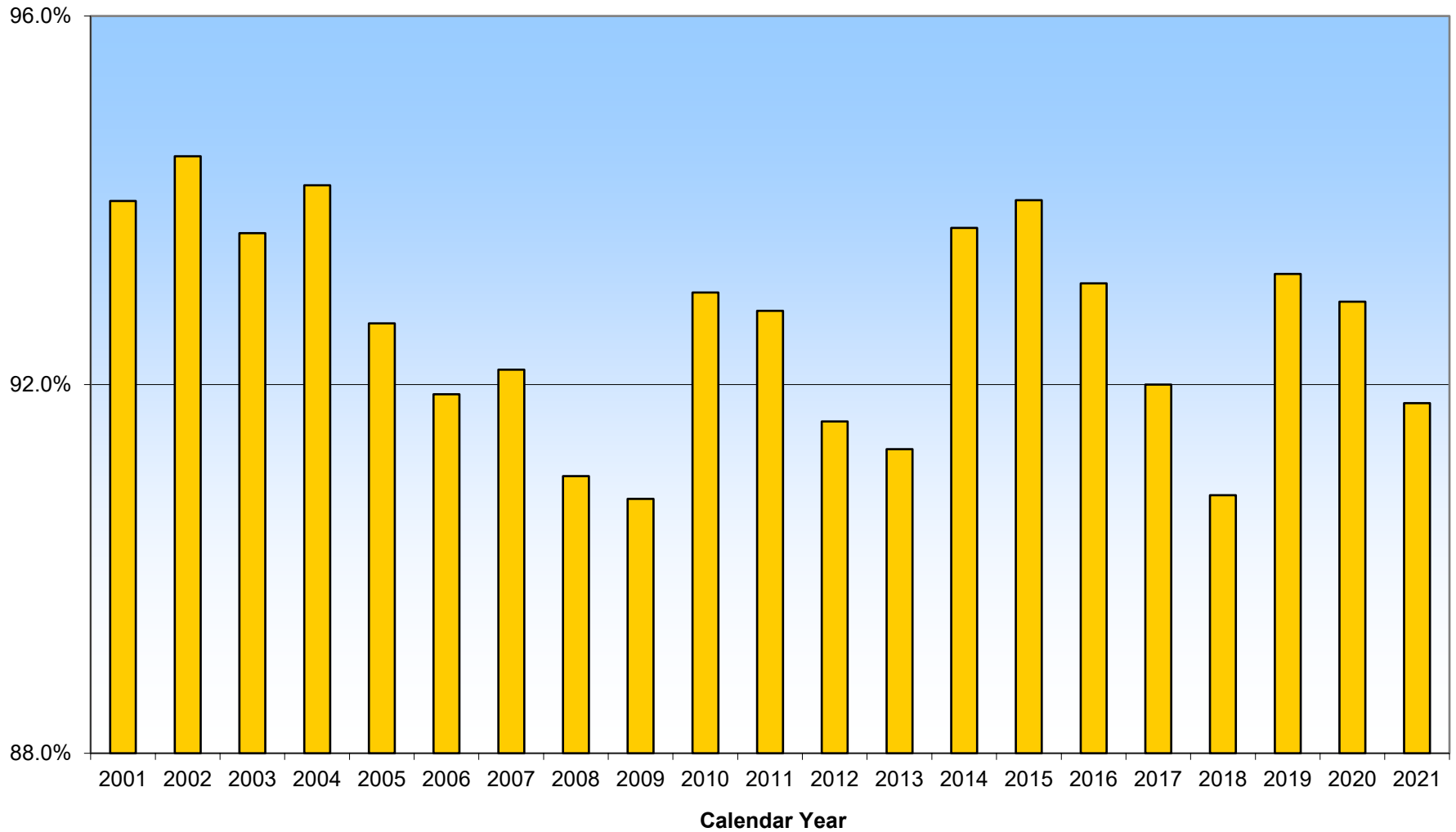
Information Provided By:  
U.S. Department of Agriculture  
Marketing and Regulatory Programs  
Agricultural Marketing Service  
Livestock, Poultry and Seed Program  
Grading and Verification Division

**USDA Prime Lamb - 2001 to 2021  
(Percentage of Total Graded)**



Information Provided By:  
U.S. Department of Agriculture  
Marketing and Regulatory Programs  
Agricultural Marketing Service  
Livestock, Poultry and Seed Program  
Grading and Verification Division

**USDA Choice Lamb - 2001 to 2021  
(Percentage of Total Graded)**

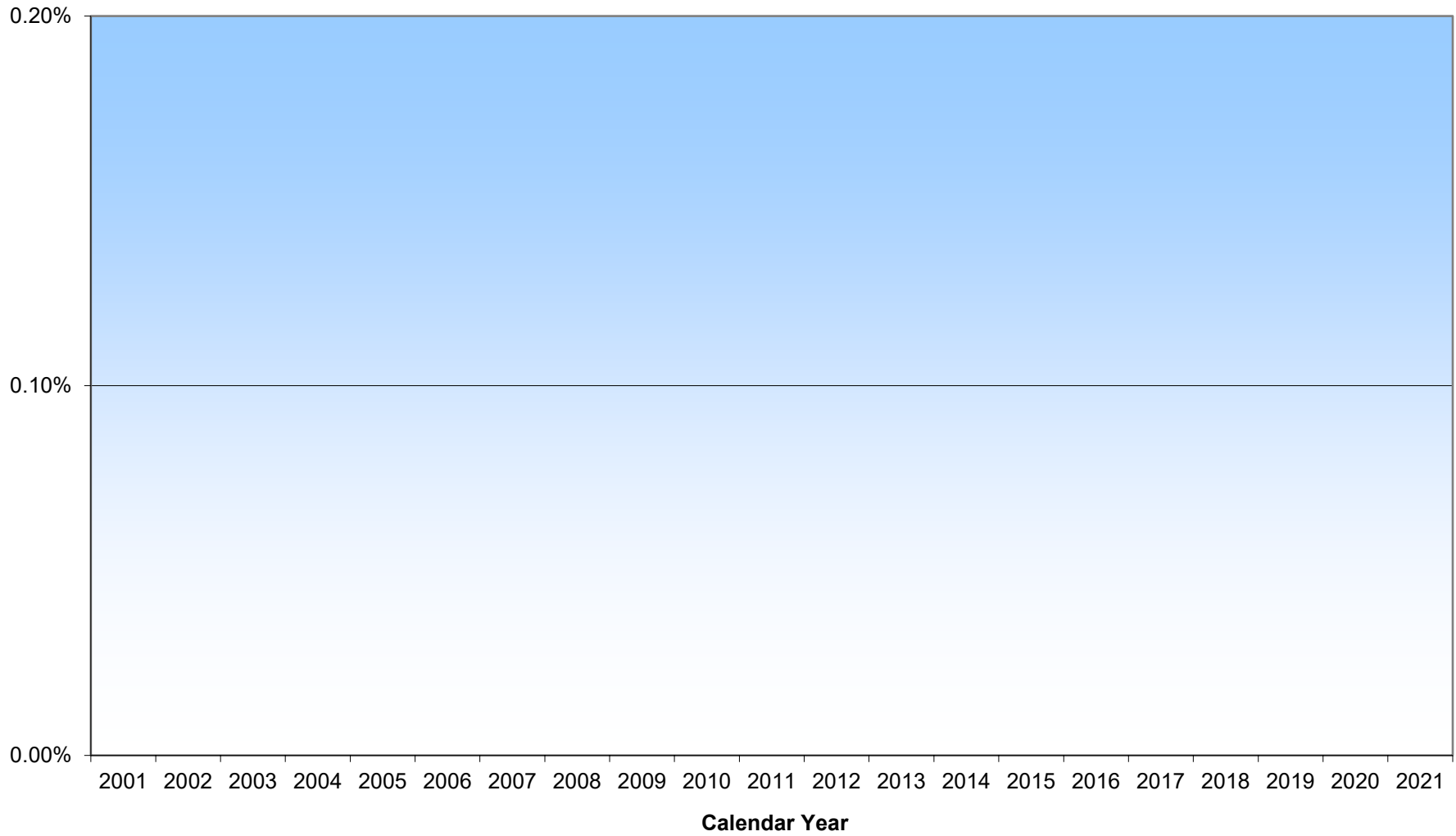


Information Provided By:  
U.S. Department of Agriculture  
Marketing and Regulatory Programs  
Agricultural Marketing Service  
Livestock, Poultry and Seed Program  
Grading and Verification Division



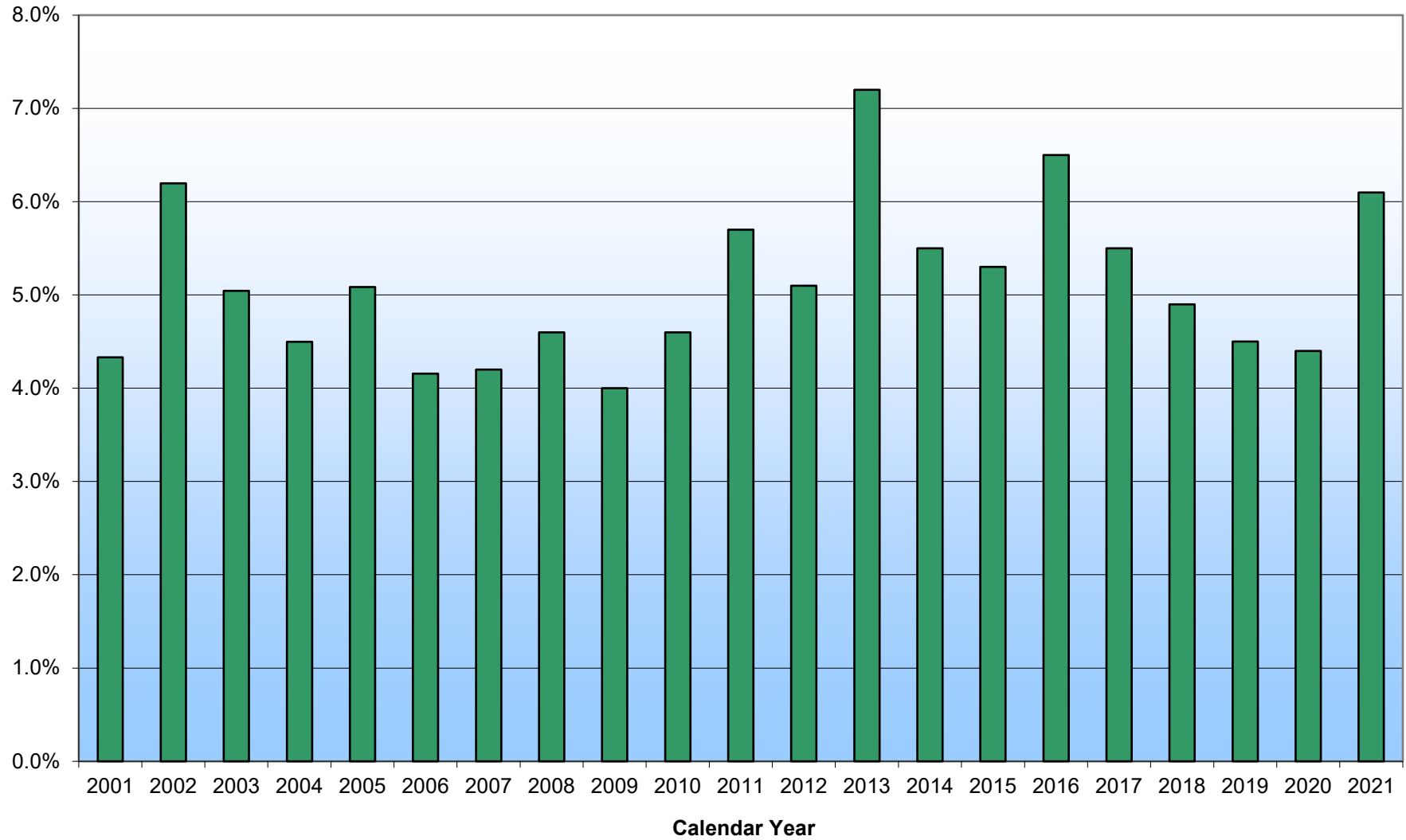
**USDA Good Lamb - 2001 to 2021  
(Percentage of Total Graded)**

*The industry has not requested USDA Good grade evaluation of Lamb carcasses since 1997*



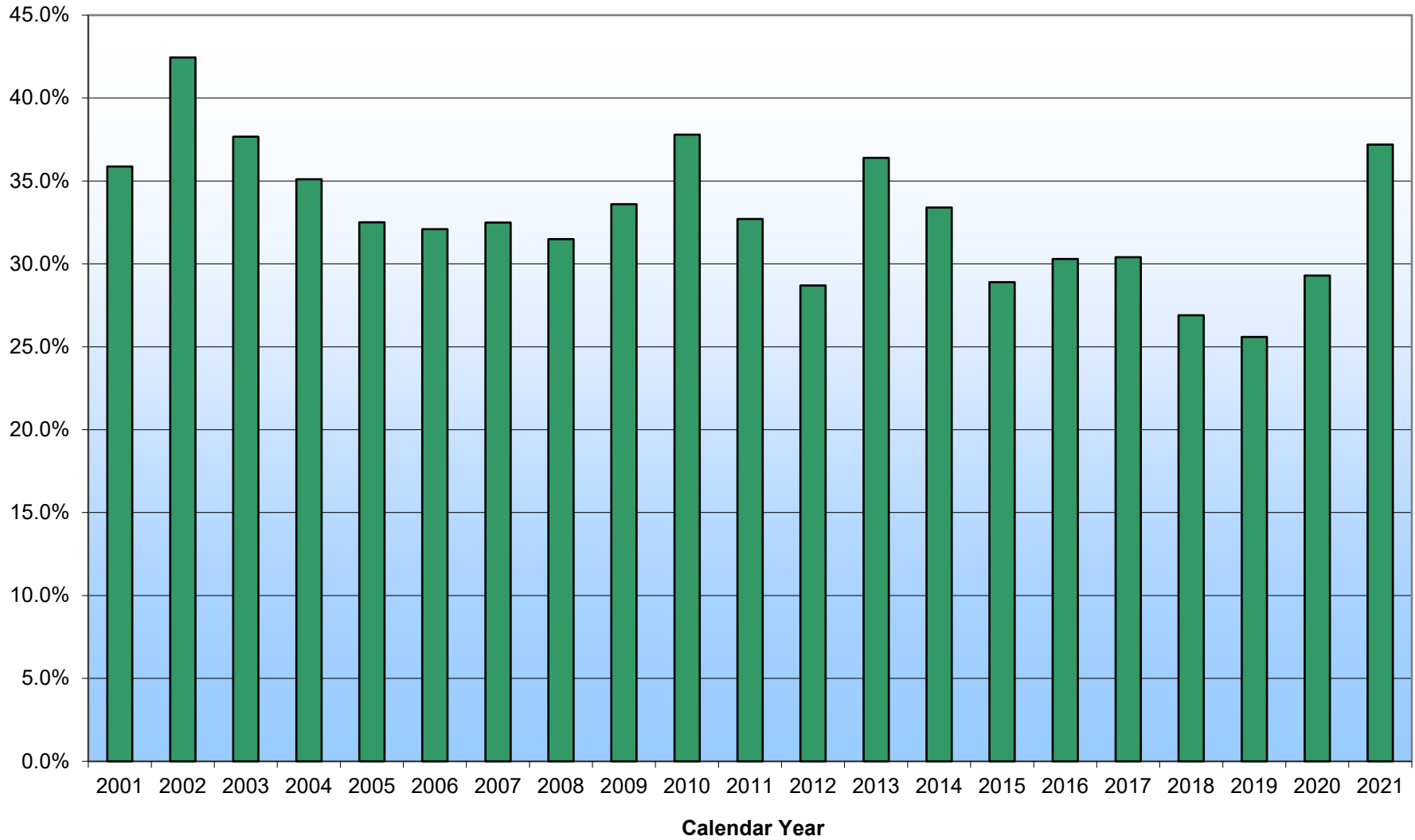
Information Provided By:  
U.S Department of Agriculture  
Marketing and Regulatory Programs  
Agricultural Marketing Service  
Livestock, Poultry and Seed Program  
Grading and Verification Division

**USDA Yield Grade 1 Lamb - 2001 to 2021  
(Percentage of Total Graded)**



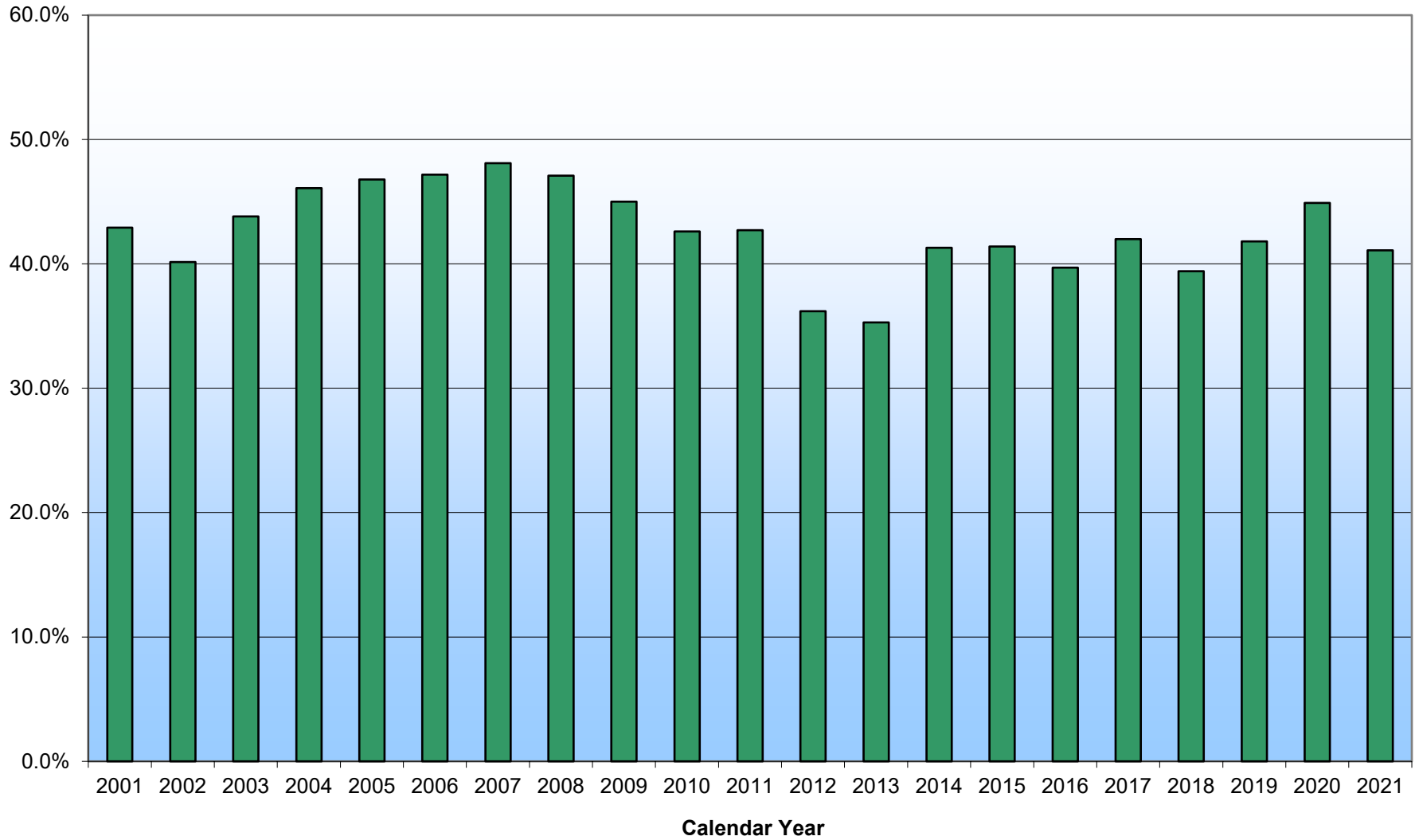
Information Provided By:  
U.S Department of Agriculture  
Marketing and Regulatory Programs  
Agricultural Marketing Service  
Livestock, Poultry and Seed Program  
Grading and Verification Division

**USDA Yield Grade 2 Lamb - 2001 to 2021  
(Percentage of Total Graded)**



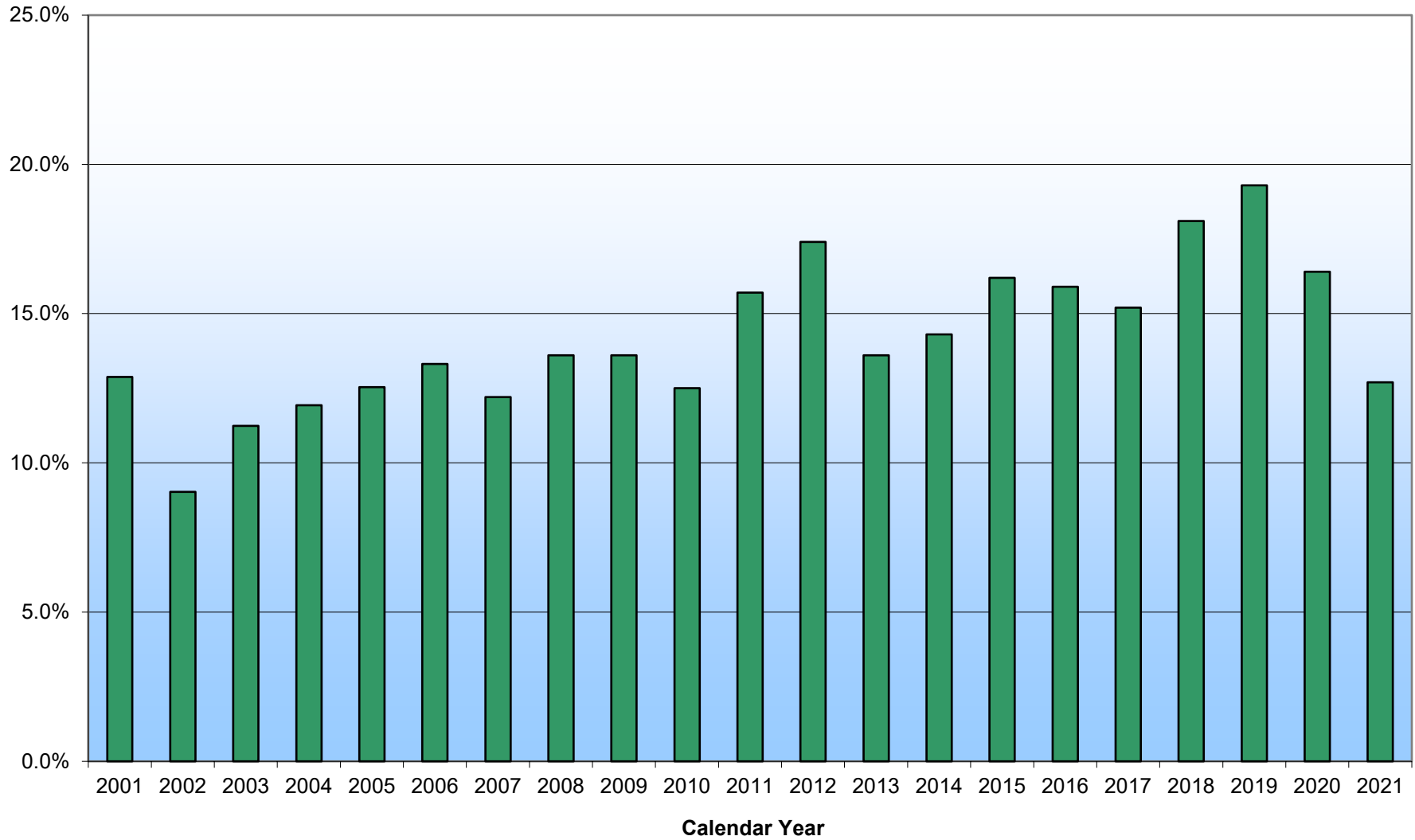
Information Provided By:  
U.S Department of Agriculture  
Marketing and Regulatory Programs  
Agricultural Marketing Service  
Livestock, Poultry and Seed Program  
Grading and Verification Division

**USDA Yield Grade 3 Lamb - 1996 to 2016**  
**(Percentage of Total Graded)**



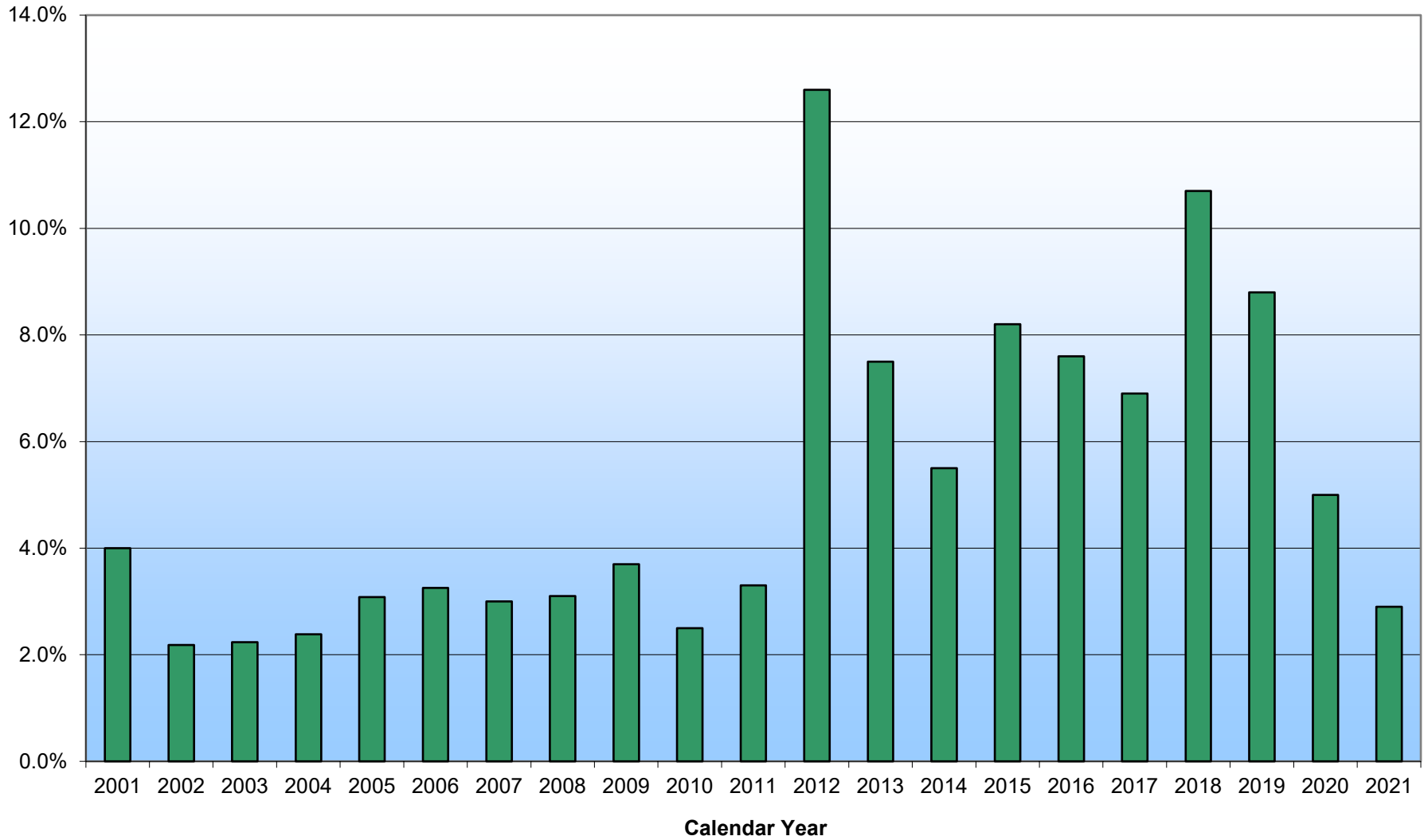
Information Provided By:  
U.S Department of Agriculture  
Marketing and Regulatory Programs  
Agricultural Marketing Service  
Livestock, Poultry and Seed Program  
Grading and Verification Division

**USDA Yield Grade 4 Lamb - 2001 to 2021  
(Percentage of Total Graded)**



Information Provided By:  
U.S Department of Agriculture  
Marketing and Regulatory Programs  
Agricultural Marketing Service  
Livestock, Poultry and Seed Program  
Grading and Verification Division

**USDA Yield Grade 5 Lamb - 2001 to 2021  
(Percentage of Total Graded)**



Information Provided By:  
U.S Department of Agriculture  
Marketing and Regulatory Programs  
Agricultural Marketing Service  
Livestock, Poultry and Seed Program  
Grading and Verification Division