

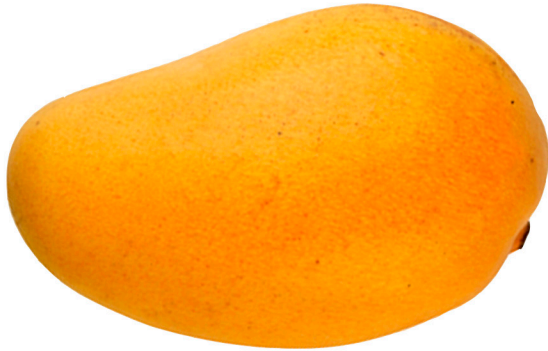
**THE VISUAL AIDS ON THE FOLLOWING
PAGES ARE FOR REFERENCE ONLY AND
NOT INTENDED FOR OFFICIAL USE.**

**TO PURCHASE OFFICIAL VISUAL AIDS PLEASE CONTACT
THE SPECIALTY CROPS INSPECTION DIVISION'S
EQUIPMENT AND FORMS DEPOT**

**USDA, AMS, FVP, SCI
831 MITTEN ROAD, ROOM 200
BURLINGAME, CA 94010
PHONE: 650-552-9073
FAX: 650-552-9147**

[EQUIPMENT CATALOG](#)

Varieties of Mangos



Ataulfo



Keitt



Haden

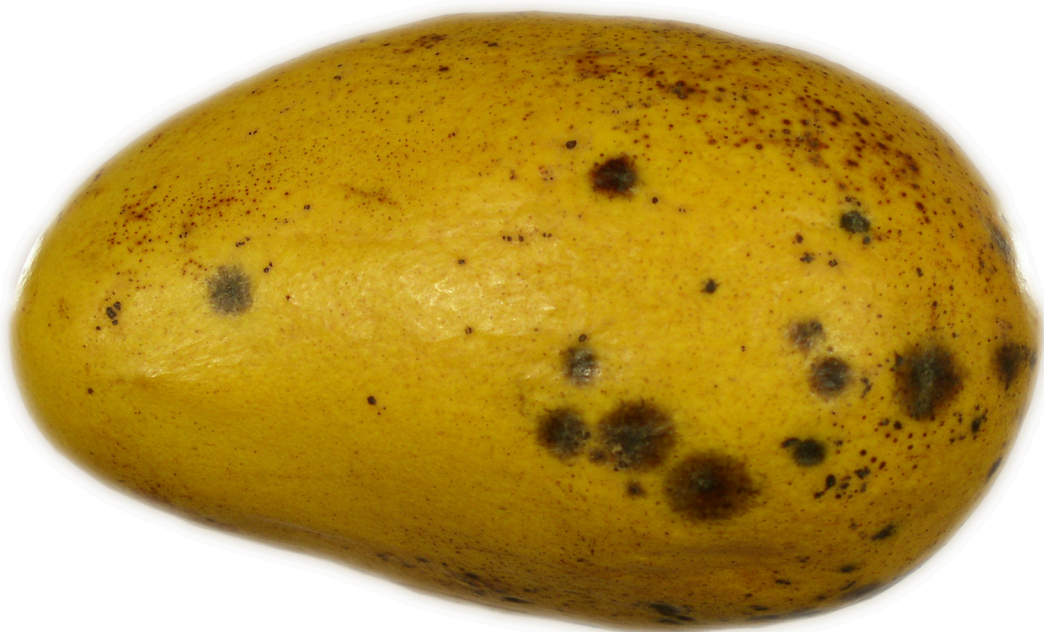


Kent



Tommy Atkins

Anthracnose of Mangos



Anthracnose in early stages.



Anthracnose in advanced stages (along central portion of fruit).

MANGO



Scab on stem end of fruit.



Scab of side of fruit.