

NAREEE ADVISORY BOARD UPDATES

Michele Esch, Executive Director

September 15, 2015

OVERVIEW

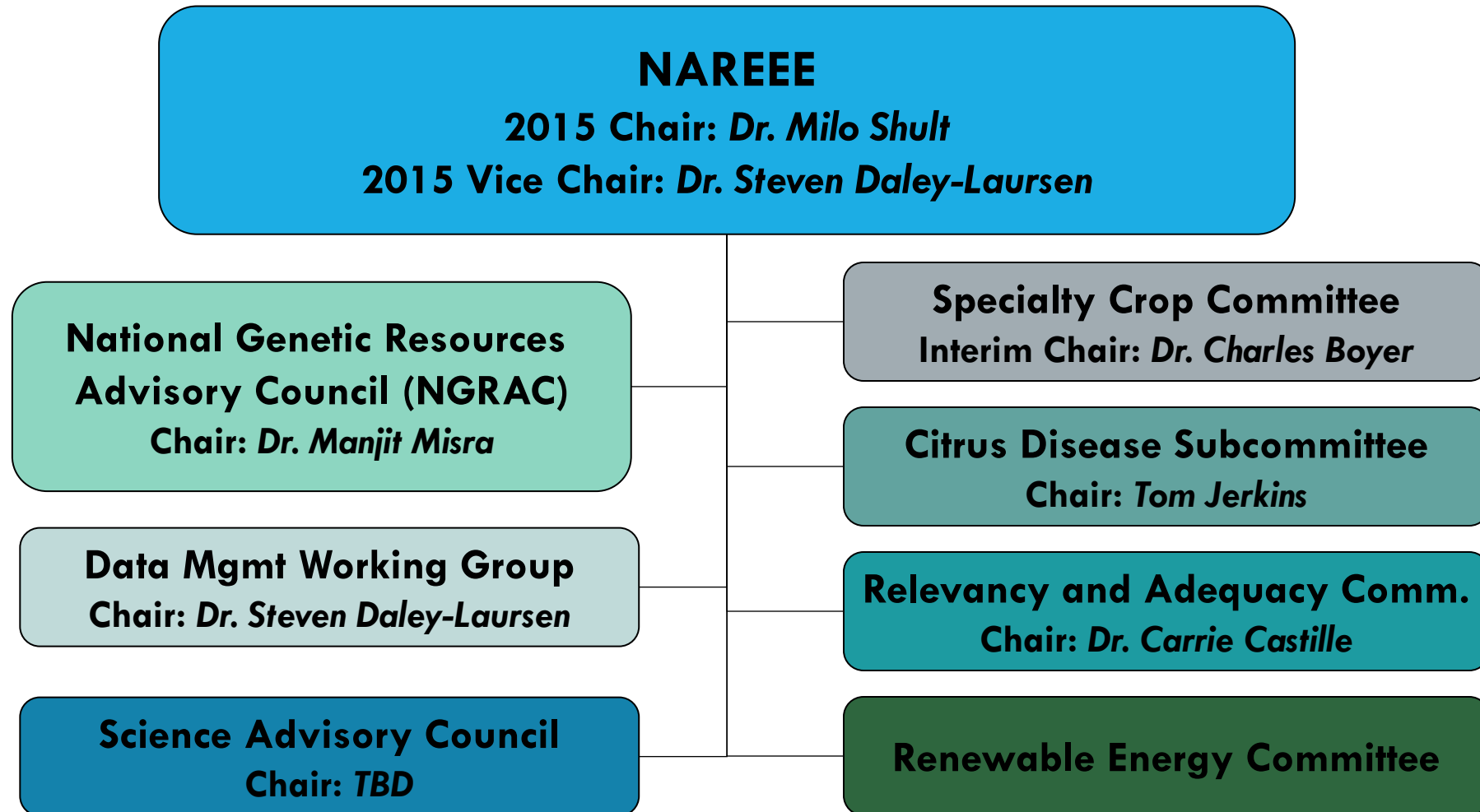
- I. NAREEE Advisory Board
- II. Subcommittee and Working Groups
 - I. National Genetic Resources Advisory Council
 - II. Specialty Crop Committee
 - III. Citrus Disease Subcommittee

WHAT IS THE NAREEE ADVISORY BOARD?

The National Agricultural Research, Extension, Education, and Economics Advisory Board (NAREEEAB) provides advice to the Secretary of Agriculture and land-grant colleges and universities on top priorities and policies for food and agricultural research, education, extension and economics.

The NAREEEAB's main objective is to contribute to effective federal agricultural research, education and economics programs through broad stakeholder feedback and sound science in its ongoing role as advisor to the Secretary of Agriculture.

NAREEE SUBCOMMITTEES AND WORKING GROUPS



2014/2015 REPORTS

- Re-balancing of the Research Portfolio: Private vs. Public Investments
- Report of the Agricultural Experiment Station Working Group
- Recommendations on Open Data, Big Data, and Data Management within USDA and Between USDA and its Partners
- Consultation of the Specialty Crop Committee on the Relevancy Review Process for the Specialty Crop Research Initiative (FY2014 and FY2015)
- National Genetic Resources Advisory Council Response to the AC21
- Recommendations on the Citrus Disease Research and Extension Program
- Establishment of the National Priorities, Section 7128 of the 2014 Farm Bill
- Additional Recommendations on the Animal Handling and Welfare Review Panel's Phase I and Phase II reports
- 2015 Relevance and Adequacy Report: a revised process for the review (currently draft)

NGRAC

Provides advice on the acquisition, preservation, access, distribution and exchange of genetic resources of life forms important to American agriculture, including plants, forest species, animals, aquatic species, insects, and microbes.

The responsibilities of the NGRAC are:

- to formulate recommendations on actions and policies for the collection, maintenance, and utilization of genetic resources;
- to make recommendations for coordination of genetic resources plans of several domestic and international organizations; and
- to advise the Secretary of Agriculture and the NGRP Director of new and innovative approaches to genetic resources conservation.

AC21 REQUEST TO NGRAC

USDA should task the NGRAC to [1] develop a plan in conjunction with the seed industry for ongoing evaluation of the pool of commercially available non-GE and organic seed varieties and [2] identification of market needs for producers serving GE-sensitive markets. USDA should [3] work with seed suppliers to ensure that a diverse and high quality commercial seed supply exists that meets the needs of all farmers, including those supplying products to GE-sensitive customers. These activities should be conducted in such a way as not to interfere with functioning markets and the activities should be independent of regulatory approvals for GE products.

SPECIALTY CROP COMMITTEE

Established to study the scope and effectiveness of research, extension, and economics programs affecting the specialty crop industry including:

1. Programs to improve the efficiency, productivity and profitability of specialty crop production in the United States;
2. Research, extension, and teaching programs designed to improve competitiveness in research, extension, and economics programs affecting the specialty crop industry.

The Agricultural Act of 2014 expanded the role of the SCC to consult with NIFA on the relevancy review process for the Specialty Crop Research Initiative (SCRI). The committee must annually assess the procedures and objectives used for the relevancy review process. The committee also provides comments to NIFA on SCRI grants awarded during the previous fiscal year.

CITRUS DISEASE SUBCOMMITTEE

To advise the Secretary of Agriculture on citrus research, extension, and development needs, engage in regular consultation and collaboration with USDA, and provide recommendations for research and extension activities related to citrus disease.

The Farm Bill requires NIFA to complete an annual consultation with the CDS to recommend:

- A research and extension agenda and annual budgets for the CDRE;

- Evaluate and review ongoing research and extension funded by the CDRE;

- Establish annual priorities for the award of the CDRE grants;

- Provide any comments on grants awarded by the CDRE in the previous fiscal year.

CDS 2015 PRIORITIES

1. CDRE funding in FY2015 should continue to focus on Huanglongbing (HLB).
2. All of the FY2015 budget of \$25 million should be obligated during that year.
3. The funding priorities for FY2015 are the following items, in ranked order:
 - a. Chemical and heat therapy systems to kill or suppress bacteria.
 - b. Culturing (cultivating) the CLas bacterium.
 - c. Early detection of the bacterium in host and vector.
 - d. Resistant germplasm.
 - e. At a low priority, other topics, such as attract and kill/suppression are encouraged if they are of scientific high quality and relevant to the needs of the industry.



THANK YOU!

Michele Esch, Executive Director

NAREEE Advisory Board

Michele.esch@ars.usda.gov

Office: 202.720.8408

Mobile: 301.367.9891

Website: nareeeab.ree.usda.gov