



## PORK LMR WEBINAR SERIES-FALL 2021

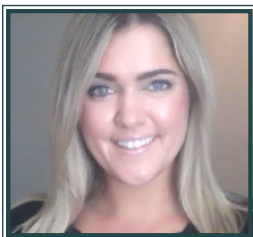
### Part II: USDA Livestock Mandatory Reports - Live Swine Reports

**Tuesday, October 19, 2021, 11:00 am – 12:30 pm Central Time**

USDA Market News will introduce you to LMR swine reports and address how data is reviewed and aggregated. CME Group will explain how LMR information is used in the CME Lean Hog Index. Representatives from the National Pork Producers Council and Iowa State University will explore how to use LMR swine reports as a risk management tool.



**Scott Hays** is a fifth-generation pork producer and as the CEO of Two Mile Pork, LLC, oversees all aspects of production and business operations. Scott currently serves as Vice President on the National Pork Producers Council Board of Directors and represents producers on various national committees. Scott is a member of the Missouri Pork Association Board, Missouri Corn Growers Association, Missouri Agricultural Leaders of Tomorrow president, Missouri Farm Bureau, Monroe City FFA, and Missouri Institute of Cooperatives.



**Anne Krema** currently serves as Director of Research and Product Development at CME Group. She is responsible for maintaining the current livestock and dairy product offering, as well as re-searching potential new products. Since joining CME Group, Anne has worked closely with commercial market participants in the agricultural space to ensure that the Exchange continues to serve as an effective venue for risk management for the hedging community. Anne studied Economics and Statistics at the University of Michigan.



**Dr. Lee Schulz** is an associate professor in the Department of Economics at Iowa State University and serves as the statewide specialist on livestock economics and markets. His areas of expertise are in production and marketing, price analysis, and risk management for the cattle and pork industries. Lee routinely collaborates with Farm Management Extension, the Iowa Beef Center and Iowa Pork Industry Center, the Center for Agricultural and Rural Development, and industry stakeholders. He publishes regularly in professional journals, extension publications, and the popular press and has spoken at numerous professional and agricultural conferences.



**Kirk Hatfield** serves as a Supervisory Market Reporter in the USDA Agricultural Marketing Service's (AMS) Livestock, Poultry, and Grain Market News office in Des Moines, IA. He oversees LMR live swine reporting, as well as several livestock voluntary reports. Kirk has been with LPGMN for nearly 6 years, previously serving as a Market Reporter working on swine, pork, poultry, and local-regional reports. Kirk holds a B.S. in Animal Science from Iowa State University.

**[REGISTER HERE](#)**