

**THE VISUAL AIDS ON THE FOLLOWING
PAGES ARE FOR REFERENCE ONLY AND
NOT INTENDED FOR OFFICIAL USE.**

**TO PURCHASE OFFICIAL VISUAL AIDS PLEASE CONTACT
THE SPECIALTY CROPS INSPECTION DIVISION'S
EQUIPMENT AND FORMS DEPOT**

**USDA, AMS, FVP, SCI
831 MITTEN ROAD, ROOM 200
BURLINGAME, CA 94010
PHONE: 650-552-9073
FAX: 650-552-9147**

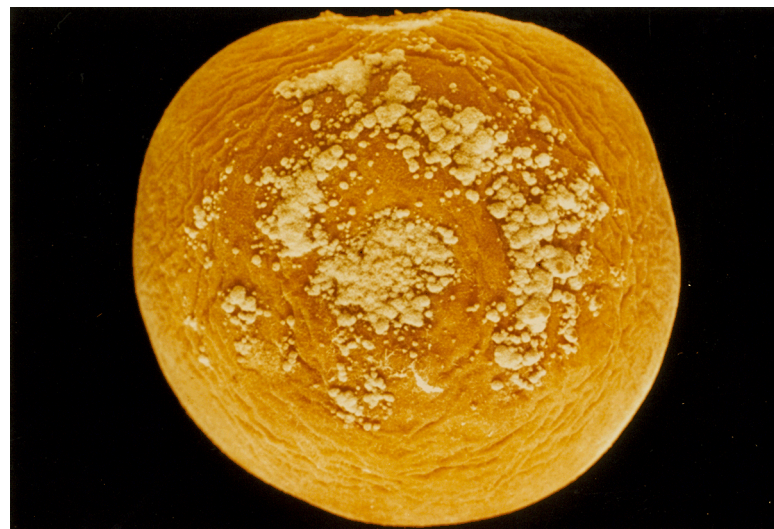
[EQUIPMENT CATALOG](#)



RHIZOPUS ROT, MEDIUM STAGE



RHIZOPUS ROT, ADVANCED STAGE



BROWN ROT, ADVANCED STAGE

FOR IDENTIFICATION ONLY

**PCH-1-IDENT
MARCH 1990
(Previously February 1971)**



SCAB



**WHITE GRANULAR GROWTH IN SEED CAVITY
(NOT MOLD)**



BACTERIAL SPOT

FOR IDENTIFICATION ONLY

**PCH-2-IDENT
MARCH 1990
(Previously February 1971)**

IDENTIFICATION ONLY



Seam Crack



Growth Crack

PEACH DEFECTS



1. Scale Marks – Not Damaged. Marks are scored on a general appearance basis and not on the size of area affected, as is done when the scale insects are present. Not a limit.



2. Scale Marks – Damage. The number and size of marks here materially affect the appearance of the peach. Not borderline.



3. “Silvering or Thrips Injury – Not Damaged. Scored on an appearance basis. The area affected here does not contrast sufficiently to materially affect the appearance of the peach. Not a limit.

PCH-CP-1
MARCH 1990
(Previously May 1972)

PEACH DEFECTS



**Crease Wart (zipper type or roughness of suture)
Maximum allowed – U.S. No. 2**



**Shape –
Maximum allowed – U.S. No. 2**



Shape – Maximum allowed

Left: U.S. No. 1

Right: U.S. No. 2



Shape – Maximum allowed
U.S. No. 1

Shape – Maximum allowed
(equal halves)
U.S. No. 1

PCH-CP-2-A
SHAPE

April 1990 (Previously June 1977, Side 4)



Shape
Maximum allowed – U.S. No. 2



Shape
Maximum allowed – U.S. No. 2

PCH-CP-2-B
SHAPE
MARCH 1990 (Previously June 1977, Side 3)



**Mold in seed cavity.
Maximum allowed before considering readily apparent.
(Serious damage at all times)**



**Consider enlarged seam or protruding suture only.
Maximum allowed – U.S. No. 1**



Shape – Maximum allowed – U.S. No. 1



Shape – Maximum allowed – U.S. No. 1

**PCH-CP-2-D
SHAPE
APRIL 1990 (Previously June 1977, Side 6)**



U.S. NO. 1 – OPEN SEAM – MAXIMUM ALLOWED

As a guide based on this photo, the length of this open seam is 1-1/4 inches (approximately 1/3 of the surface length) and the depth is 3/8 inch. This peach is approximately 2-3/4 inches in diameter. The actual width of this open seam is approximately 3/8 inch.



U.S. No. 2 – Open Seam – Maximum Allowed

FLAT TYPE PEACHES



Flat type peaches commonly referred to as “doughnut” or “bagel” peaches can be certified under the U.S. Standards for Grades of Peaches.

PCH-CP-5
APRIL 2000

PEACHES

SLIDE 10 – ENLARGED SEAMS



PEACHES

SLIDE 106 – BACTERIAL SPOT



PEACHES

SLIDE 132 -- SHAPE



PEACHES

SLIDE 14 -- IMMATURE



PEACHES

SLIDE 15 – ORIENTAL PEACH MOTH



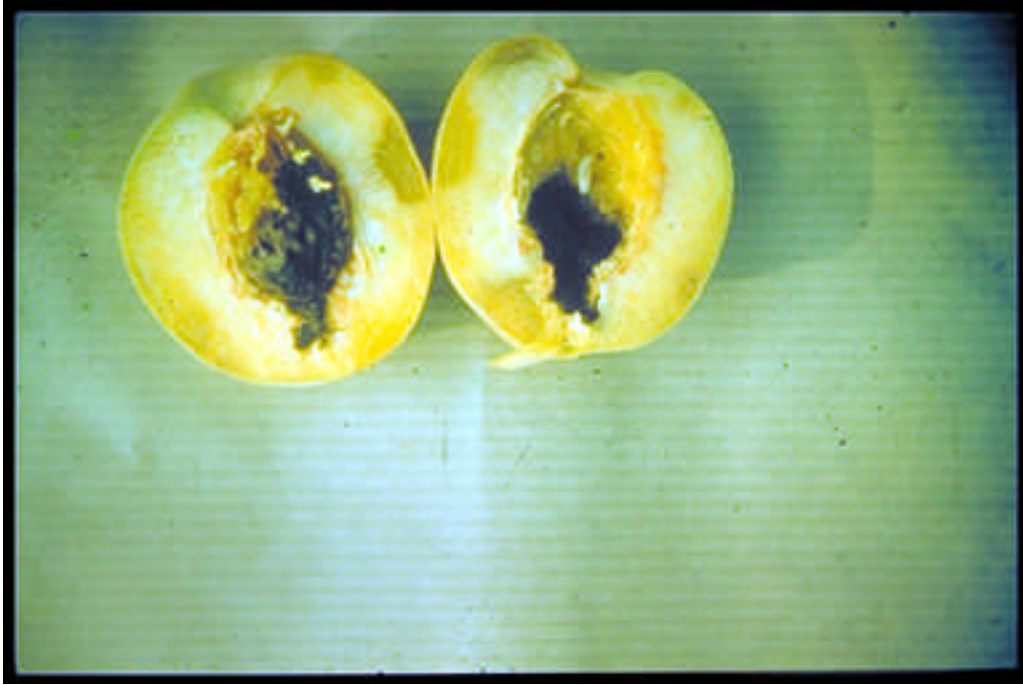
PEACHES

SLIDE 16 -- CIRCULIO



PEACHES

SLIDE 17 -- CIRCULIO



PEACHES

SLIDE 18 -- SPRAYBURN



PEACHES

SLIDE 19 -- SCARRING



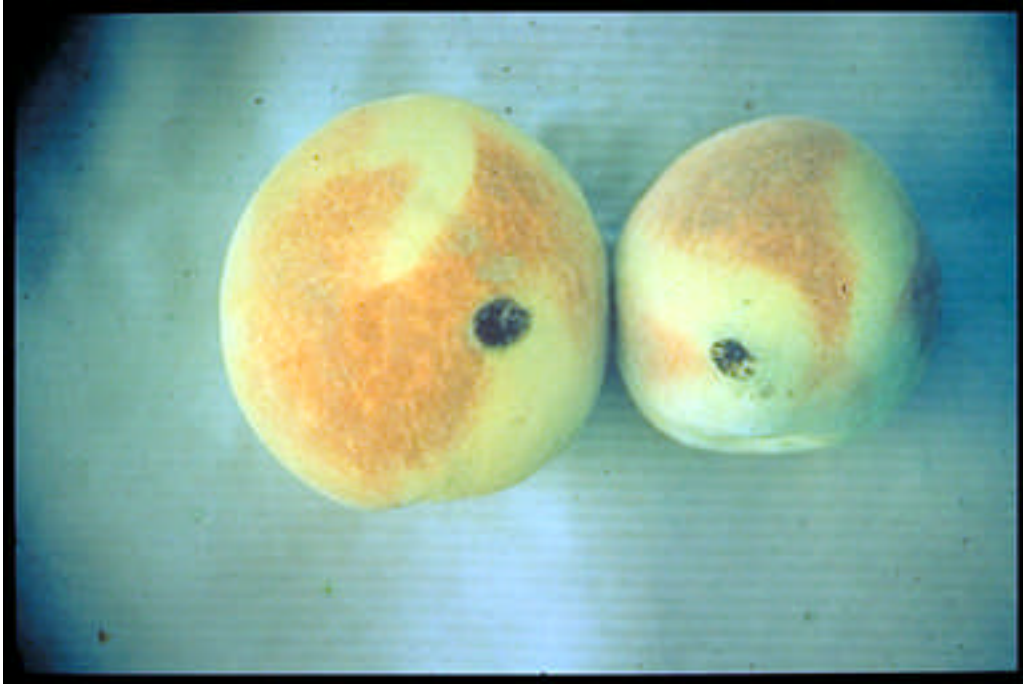
PEACHES

SLIDE 20 -- SCARRING



PEACHES

SLIDE 21 -- HAIL



PEACHES

SLIDE 22 -- HAIL



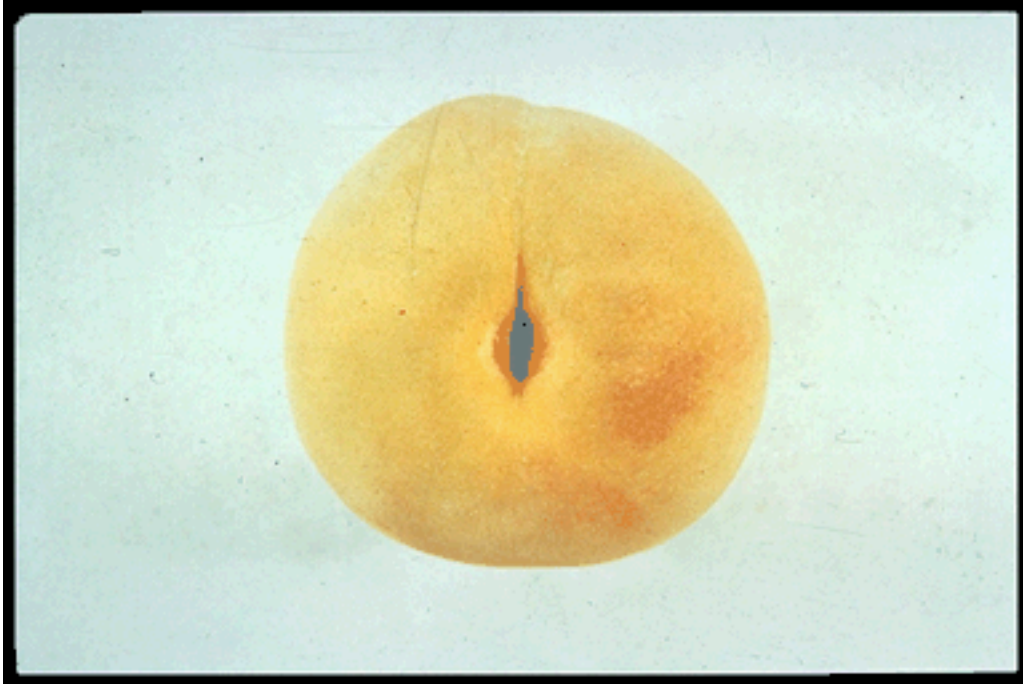
PEACHES

SLIDE 23 -- HAIL



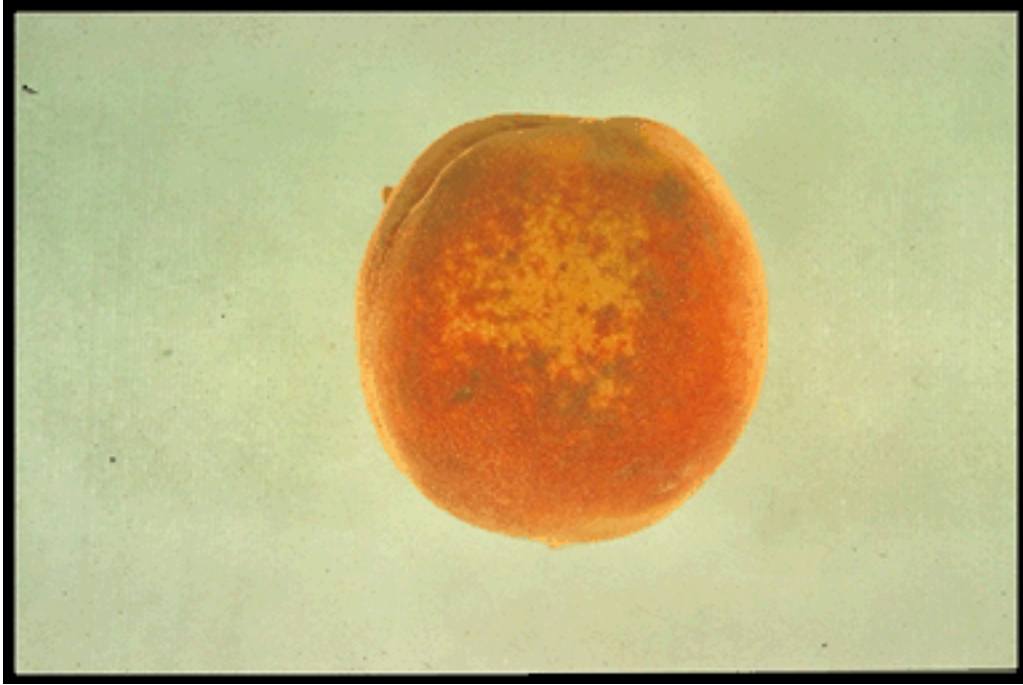
PEACHES

SLIDE 230 – SPLIT PIT



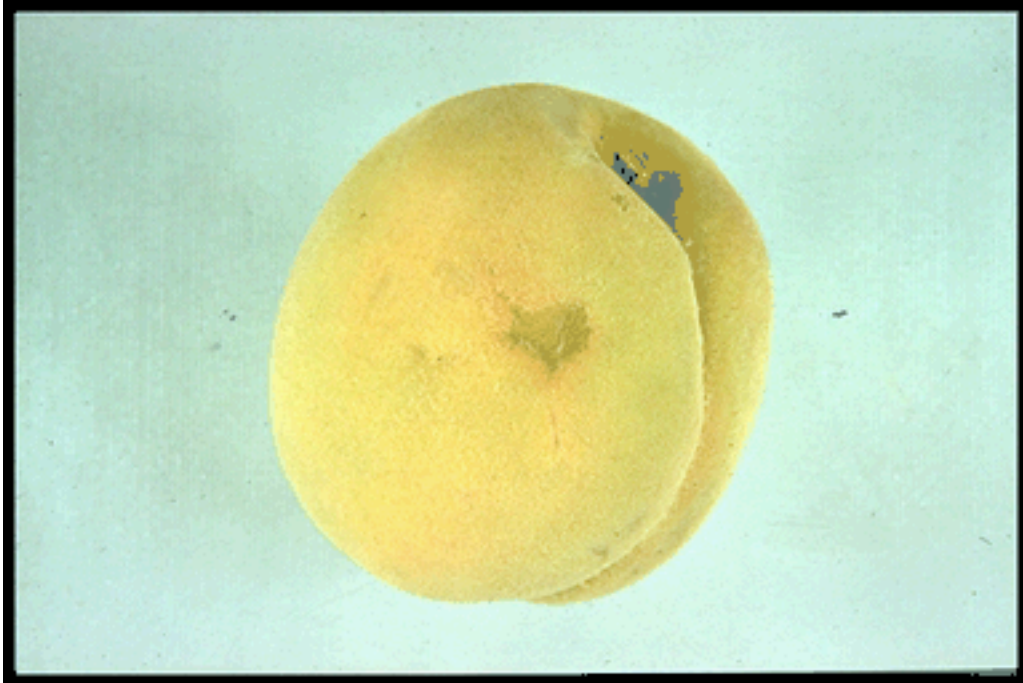
PEACHES

SLIDE 231 – SPRAY INJURY



PEACHES

SLIDE 232 -- HAIL



PEACHES

SLIDE 233 -- HAIL



PEACHES

SLIDE 234 -- SCAB



PEACHES

SLIDE 235 -- SCAB



PEACHES

SLIDE 236 – BACTERIAL SPOT



PEACHES

SLIDE 237 – BACTERIAL SPOT



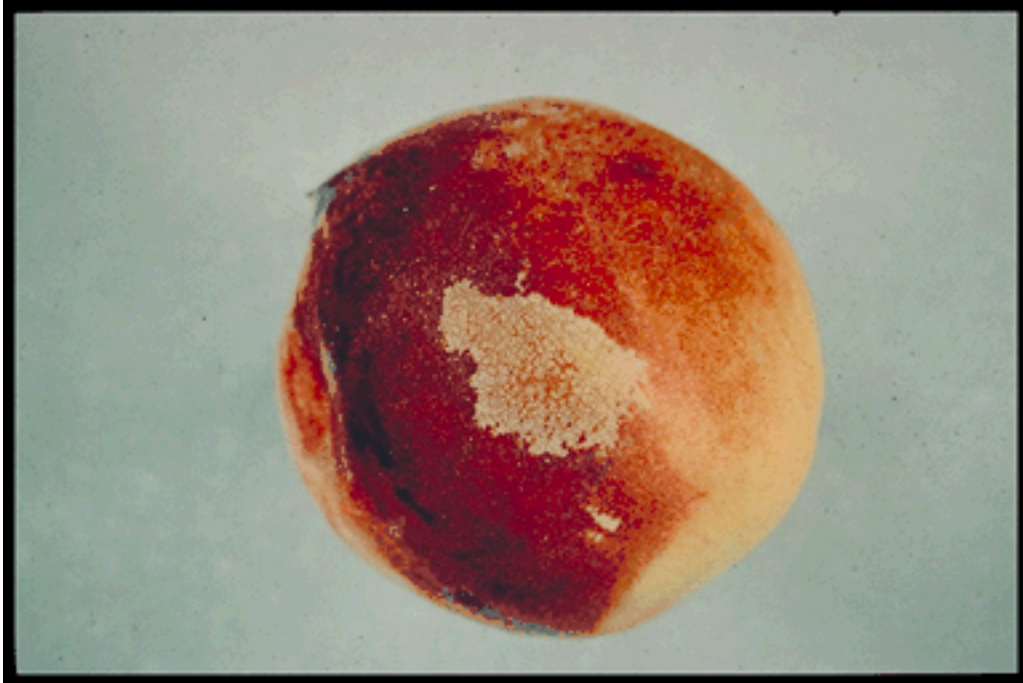
PEACHES

SLIDE 24 – COLD DAMAGE



PEACHES

SLIDE 263 – SMOOTH SCAR



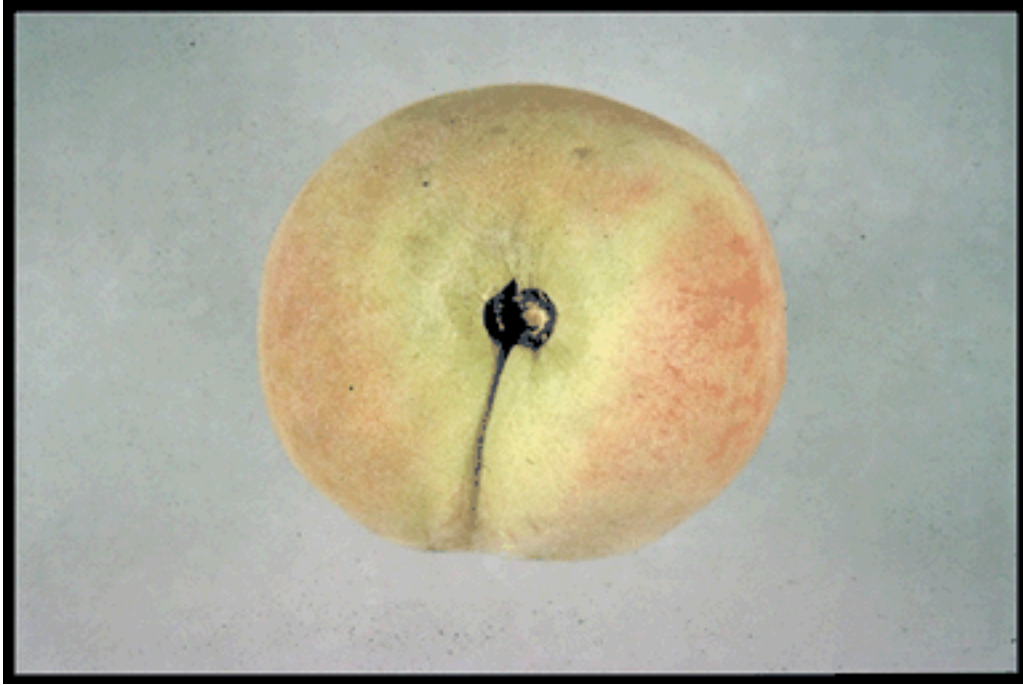
PEACHES

SLIDE 264 – SMOOTH SCAR



PEACHES

SLIDE 265 – SPLIT PIT



PEACHES

SLIDE 267 – SPLIT PIT



PEACHES

SLIDE 268 – SPLIT PIT



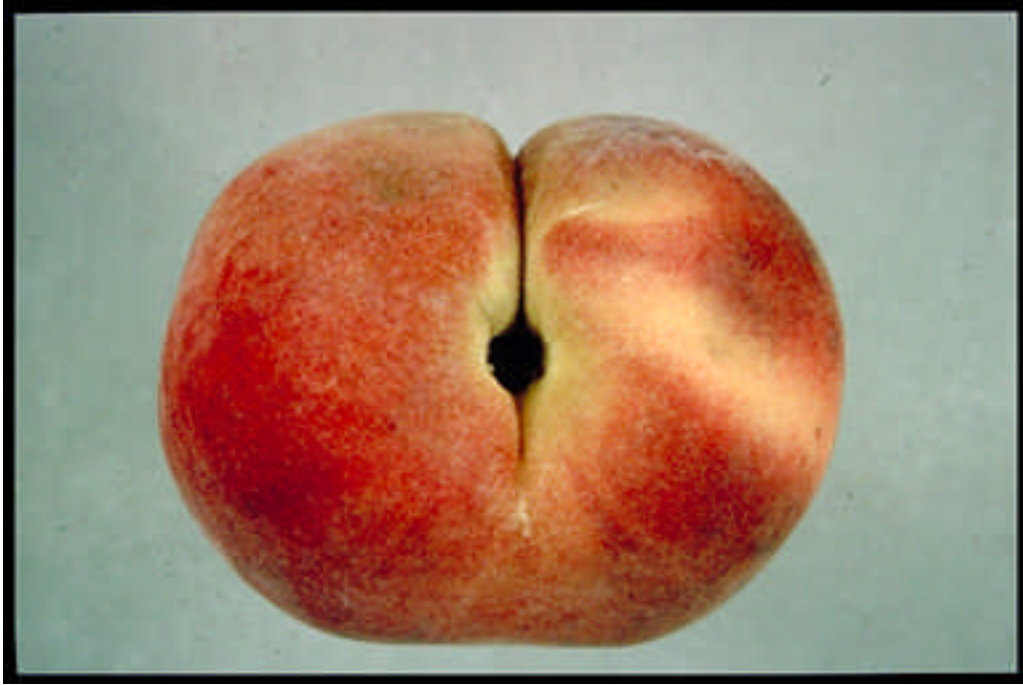
PEACHES

SLIDE 269 – SPLIT PIT



PEACHES

SLIDE 270 – SPLIT PIT



PEACHES

SLIDE 271 – SCAB



PEACHES

SLIDE 272 – SPOTS FROM SAN JOSE SCALE



PEACHES

SLIDE 273 -- HALE



PEACHES

SLIDE 275 – ORIENTAL PEACH MOTH



PEACHES

SLIDE 281 -- BRUISE



PEACHES

SLIDE 285 -- BRUISE



PEACHES

SLIDE 286 -- BRUISE



PEACHES

SLIDE 8 – SAN JOSE SCALE



PEACHES

SLIDE 9 -- SCAB

