

**THE VISUAL AIDS ON THE FOLLOWING
PAGES ARE FOR REFERENCE ONLY AND
NOT INTENDED FOR OFFICIAL USE.**

**TO PURCHASE OFFICIAL VISUAL AIDS PLEASE CONTACT
THE SPECIALTY CROPS INSPECTION DIVISION'S
EQUIPMENT AND FORMS DEPOT**

**USDA, AMS, FVP, SCI
831 MITTEN ROAD, ROOM 200
BURLINGAME, CA 94010
PHONE: 650-552-9073
FAX: 650-552-9147**

[EQUIPMENT CATALOG](#)

PLUMS



Santa Rosa – Typical Shape – End View



Santa Rosa – Typical Shape – Side View



Red Beaut – Typical Shape

FOR IDENTIFICATION ONLY

**PL-1-IDENT
MAY 1990
(Previously May 1972)**

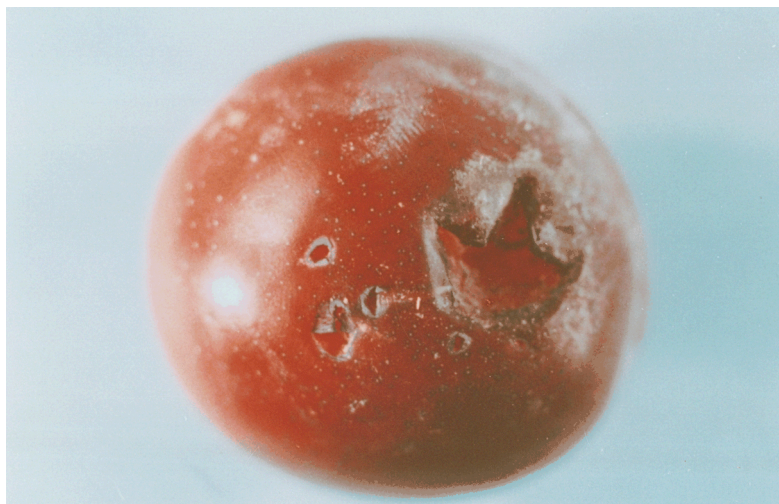
PLUMS



Fingernail Injury



Mechanical Injury

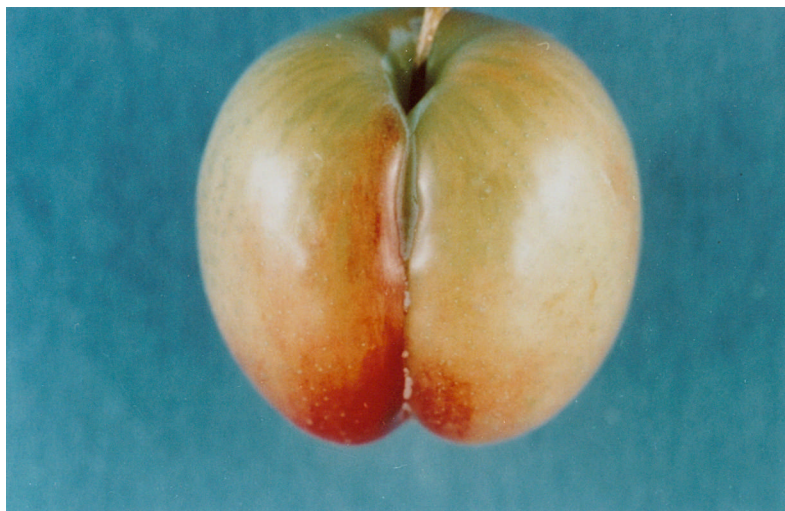


Bird Injury

FOR IDENTIFICATION ONLY

**PL-2-IDENT
MAY 1990
(Previously May 1972)**

PLUMS



Deep Suture



Fairly Light Colored, Fairly Smooth Scar



Healed Cut

FOR IDENTIFICATION ONLY

**PL-3-IDENT
MAY 1990
(Previously May 1972)**

PLUMS



Santa Rosa Off-Shape Account Poor Pollinization



Santa Rosa Very Off-Shape Account Poor Pollinization

FOR IDENTIFICATION ONLY

**PL-4-IDENT
MAY 1990
(Previously May 1972)**

PLUM DEFECTS



1. Hail Marks – Damage – Marks are not over 1/16" deep, but are rough and aggregate an area of more than that of a circle 1/4" in diameter on a 1-7/8" plum. Near upper limit.

2. Split Pit – Damage – Healed crack in flesh is more than 1/4" long. Not borderline.

3. Scars – Damage – Dark or Rough. Area exceeds that of a circle 1/4" in diameter on a 2" plum. Not a limit.

PL-CP-1
DEFECTS
MAY 1990 (Previously May 1972)

PLUMS



**Serious Damage
By Pebbling**



**Damage by Pebbling
(ignore shape)**



**U.S. No. 1
Maximum Allowed**

En Route or At Destination, score pebbling as a condition factor.

Equal amounts of pebbling on opposite side of fruit.

**PLU-CP-2
PEBBLING
JULY 1997**

PLUMS

INTERNAL DISCOLORATION



U.S. No. 1
Maximum allowed



Damage
Maximum allowed