



# Agricultural Refrigerated Truck Quarterly

a quarterly publication of the Agricultural Marketing Service

## CONTENTS

National Summary.....	2	Quarterly Truck Availability.....	8	PNW.....	19
Quarterly Overview .....	2	Reported U.S. Shipments .....	10	Southeast.....	22
U.S. Truck Rates .....	3	Reported Shipments by Selected		Great Lakes .....	25
Truck Rates for Selected Routes.....	4	Commodities.....	11	Additional Information .....	28
U.S. Diesel Fuel Prices .....	5	Regional Markets.....	12	Terms and References.....	28
Relationship Between Diesel Fuel and		California.....	12	Contact Us.....	29
Truck Rates.....	6	U.S.-Mexico Border .....	15		



# NATIONAL SUMMARY

## Quarterly Overview

### Fruit and Vegetable Shipments

USDA reported third quarter 2022 U.S. truck shipments of fresh produce were 9.04 million tons—15 percent lower than the previous quarter and 5 percent lower than third quarter 2021.

Also, in third quarter 2022, shipments from California were 2.98 million tons, which was higher than those from any other reported origin. Shipments from California accounted for 33 percent of the total reported shipments of fresh fruit and vegetables. Shipments from the next five top regions by volume were as follows: Mexico, 2.21 million tons (24 percent of the total); Pacific Northwest (PNW), 1.38 million tons (15 percent of the total); Canada, 608,000 tons (7 percent of the total); Southeast, 401,000 tons (4 percent of the total); and finally, Great Lakes, 315,000 tons (4 percent of the total).

These top five commodities accounted for 39 percent of reported truck movements in third quarter 2022:

- ▶ Potatoes (11 percent)
- ▶ Watermelons, seedless (11 percent)
- ▶ Apples (7 percent)
- ▶ Onions, dry (6 percent)
- ▶ Grapes (4 percent)

### Truck Rates

The table below provides a snapshot of quarterly truck rates for U.S. produce shipments over four mileage categories—1-500; 501-1,500; 1,501-2,500; and 2,501+ miles. Please note the U.S. average truck rates provided below were calculated using weighted regional rates and volumes.

#### Average U.S. Truck Rates for Selected Routes Between 501 and 1,500 Miles (\$/Mile)

	0-500 miles	501-1,500 miles	1,501-2,500 miles	2,501+ miles
<b>Q3 2021</b>	3.32	3.21	3.03	1.80
<b>Q4 2021</b>	7.01	3.48	3.34	1.90
<b>Q1 2022</b>	6.02	3.25	2.89	1.67
<b>Q2 2022</b>	8.08	3.65	2.87	1.64
<b>Q3 2022</b>	8.40	3.23	2.86	1.50
<b>Q3 Change from Previous Quarter</b>	4%	-12%	> -1%	-8%
<b>Q3 Change from Same Quarter Last Year</b>	153%	< 1%	-5%	-16%

Source: AMS Transportation Services Division analysis of AMS Specialty Crops Program Market News data.

Note: Table values may not conform exactly due to rounding.

Note: The rates for 8 long-haul fruit and vegetable truck corridors are included in the national rate, weighted by commodity and origin volume.

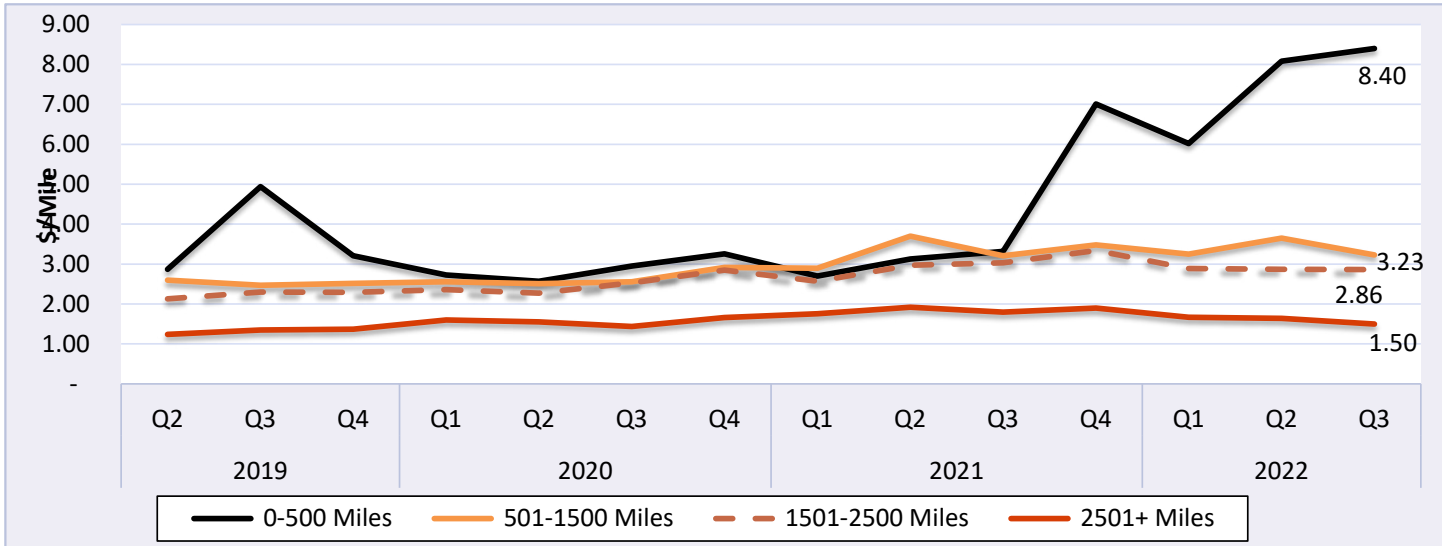
### Diesel Fuel

During third quarter 2022, the U.S. diesel fuel price averaged \$5.16 per gallon—down 6 percent from the previous quarter, but up 54 percent from the same quarter in 2021.



## U.S. Truck Rates

Figure 1: Average Truck Rates for Selected Routes (\$/Mile)



Source: AMS Transportation Services Division analysis of AMS Specialty Crops Program Market News data.

Note: The rates for 8 long-haul fruit and vegetable truck corridors are included in the national rates, weighted by commodity and origin volume.

Table 1: Average U.S. Truck Rates for Selected Routes Between 501 and 1,500 Miles (\$/Mile)

Year	1st Quarter	2nd Quarter	3rd Quarter	4th Quarter
2022	3.25	3.65	3.23	
2021	2.90	3.70	3.21	3.48
2020	2.56	2.51	2.56	2.92
2019	2.59	2.60	2.47	2.52
2018	2.82	2.99	2.74	2.84
2017	1.86	2.41	2.33	2.56
2016	2.22	2.37	2.49	2.06
2015	2.47	2.63	2.59	2.36
2014	2.32	2.67	2.64	2.49
2013	2.24	2.60	2.62	2.27
2012	2.10	2.54	2.45	2.29
2011	2.02	2.60	2.77	2.26
2010	1.82	2.21	2.33	1.94

Source: AMS Transportation Services Division analysis of AMS Specialty Crops Program Market News data.

Note: The rates for 8 long-haul fruit and vegetable truck corridors are included in the national rate, weighted by commodity and origin volume.

Note: Table values may not conform exactly due to rounding.



## AGRICULTURAL REFRIGERATED TRUCK QUARTERLY

Quarter 3, 2022

**Table 2: Quarterly Rates for Key Origins by Month; 501-1,500 miles (\$/Mile)**

U.S. Origin	3rd Quarter, 2022			2nd Quarter, 2022		
	July	August	September	April	May	June
California	4.85	4.48	4.38	4.57	4.73	4.88
Florida	n/a	n/a	1.87	3.26	3.92	3.09
Great Lakes	5.09	4.64	4.51	4.94	5.10	5.16
Mexico-Arizona	3.09	2.80	2.68	3.36	3.42	3.54
Mexico-Texas	3.11	3.01	2.90	3.83	3.50	3.17
New York	n/a	n/a	3.48	5.24	5.24	5.24
Other	3.58	3.56	3.51	3.58	3.58	3.62
PNW	2.84	2.63	2.41	2.89	2.82	2.83
Southeast	5.57	6.20	8.78	5.12	4.83	4.93
Texas	n/a	n/a	n/a	3.87	n/a	n/a

Source: AMS Transportation Services Division analysis of AMS Specialty Crops Program Market News data.

Note: "n/a" indicates rates not available.

## Truck Rates for Selected Routes

**Table 3: Origin-Destination Truck Rates for Selected Routes, 3rd Quarter 2022 (\$/Mile)**

U.S. Origin	Atlanta	Baltimore	Boston	Chicago	Dallas	Los Angeles	Miami	New York	Philadelphia	Seattle
California	3.41	3.20	3.06	3.18	4.14	16.47	3.25	3.17	3.08	4.71
Florida	4.40	1.90	n/a	1.70	n/a	n/a	n/a	1.95	1.91	n/a
Great Lakes	4.47	4.85	4.80	6.18	3.48	n/a	3.41	4.99	4.70	n/a
Mexico-Arizona	3.60	3.14	3.07	2.86	3.58	2.44	3.22	3.13	3.13	n/a
Mexico-Texas	3.29	3.07	2.87	2.72	3.93	2.41	2.96	3.12	3.01	2.75
Mid-Atlantic	3.53	11.06	5.65	n/a	n/a	n/a	n/a	7.15	9.24	n/a
New York	3.85	8.08	17.06	3.04	2.78	n/a	3.55	19.78	14.13	n/a
Other	4.02	n/a	n/a	4.05	3.24	n/a	n/a	3.85	3.55	n/a
PNW	3.10	2.97	3.13	3.06	3.03	2.62	2.85	3.11	3.06	8.21
Southeast	6.70	5.89	7.50	4.85	3.08	1.41	4.48	9.04	5.50	n/a

Source: AMS Transportation Services Division analysis of AMS Specialty Crops Program Market News data.

Note: "n/a" indicates rates not available.



## AGRICULTURAL REFRIGERATED TRUCK QUARTERLY

Quarter 3, 2022

**Table 4: Origin-Destination Truck Rates for Selected Routes, 3rd Quarter 2022 (\$/Truck)**

U.S. Origin	Atlanta	Baltimore	Boston	Chicago	Dallas	Los Angeles	Miami	New York	Philadelphia	Seattle
California	7,680	8,698	9,400	6,718	6,186	1,581	9,257	9,100	8,753	5,033
Florida	1,100	1,900	n/a	1,500	n/a	n/a	n/a	2,300	2,100	n/a
Great Lakes	4,250	4,556	5,285	1,545	3,825	n/a	5,525	5,135	4,697	n/a
Mexico-Arizona	6,486	7,386	8,300	5,146	3,507	1,367	7,333	7,836	7,521	n/a
Mexico-Texas	3,785	5,496	6,312	3,892	1,965	3,862	4,523	6,235	5,723	6,604
Mid-Atlantic	2,469	1,106	2,544	n/a	n/a	n/a	n/a	1,644	1,294	n/a
New York	3,850	2,667	2,900	2,550	4,650	n/a	5,150	2,967	3,250	n/a
Other	2,575	3,700	4,650	2,435	2,363	n/a	n/a	6,263	6,157	n/a
PNW	7,218	7,313	8,634	5,520	5,536	2,654	8,553	8,223	7,723	1,150
Southeast	2,125	2,780	6,112	4,158	2,931	3,403	2,980	5,356	3,310	n/a

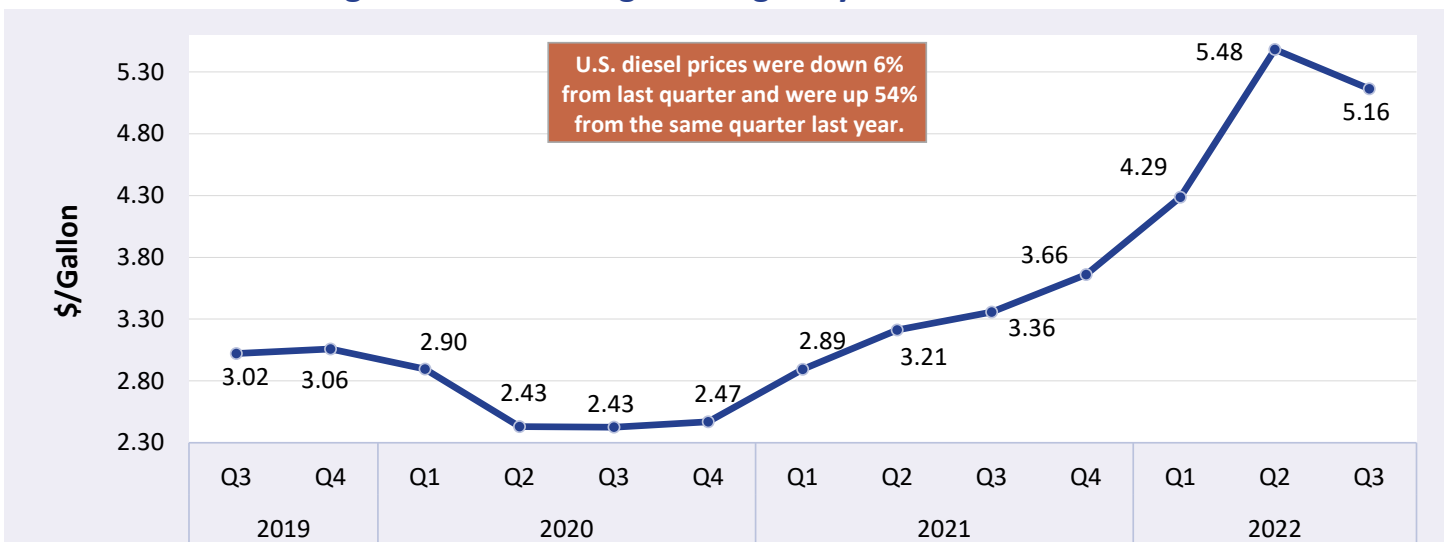
Source: AMS Transportation Services Division analysis of AMS Specialty Crops Program Market News data.

Note: "n/a" indicates rates not available.

## U.S. Diesel Fuel Prices

The diesel fuel price provides a proxy for trends in U.S. truck rates. Diesel fuel is a significant component underlying truck rates.

**Figure 2: U.S. Average On-Highway Diesel Fuel Prices**



Source: AMS Transportation Services Division analysis of Energy Information Administration/U.S. Department of Energy data.



# AGRICULTURAL REFRIGERATED TRUCK QUARTERLY

Quarter 3, 2022

**Table 5: Average Diesel Fuel Prices (All Types)**

Region	3rd Quarter 2022 Price \$/Gallon	Change From Last Quarter	Change From Last Year
East Coast	5.16	-8%	55%
California	6.29	-4%	47%
New England	5.35	-9%	64%
Central Atlantic	5.41	-8%	55%
Lower Atlantic	5.04	-7%	56%
Gulf Coast	4.85	-6%	57%
Midwest	5.16	-3%	58%
Rocky Mountain	5.18	-4%	43%
West Coast Except California	5.42	-4%	49%
U.S.	5.16	-6%	54%

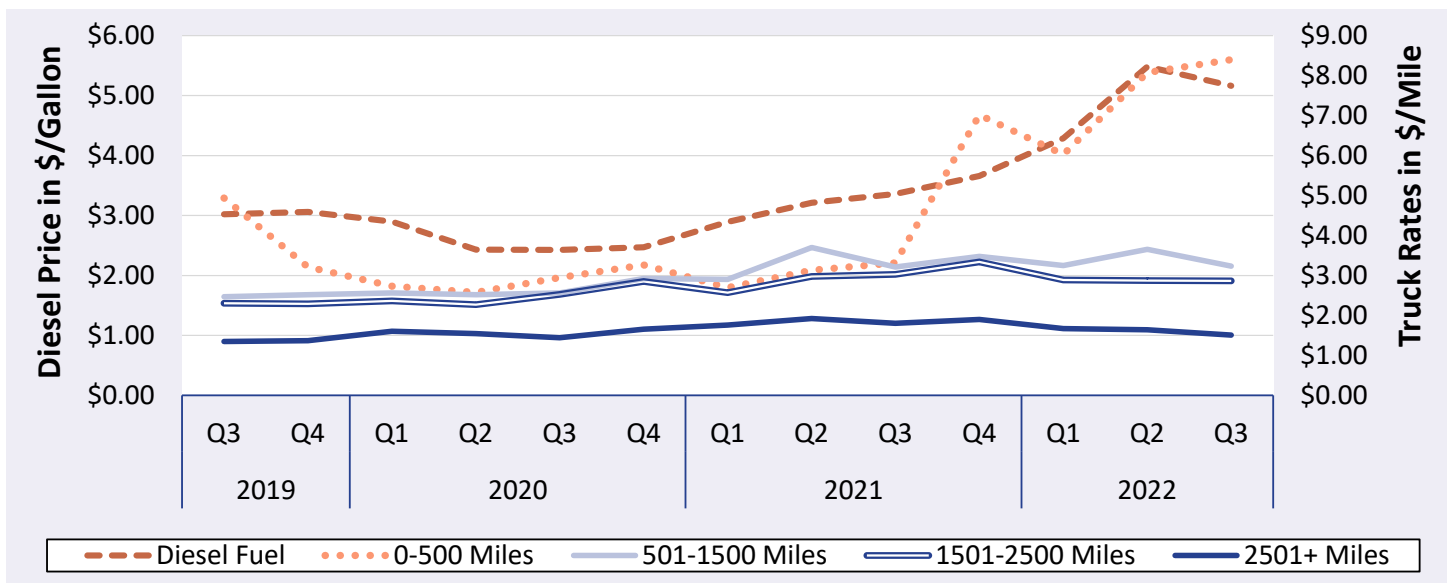
Source: AMS Transportation Services Division analysis of Energy Information Administration/U.S. Department of Energy data.

Note: Table values may not conform exactly due to rounding.

## Relationship Between Diesel Fuel and Truck Rates

The diesel fuel price provides a proxy for trends in U.S. truck rates. Diesel fuel is a significant expense for fruit and vegetable movements.

**Figure 3: U.S. Average On-Highway Diesel Fuel Prices and Truck Rates**



Sources: AMS Transportation Services Division analysis of AMS Specialty Crops Program Market News data and Energy Information Administration/U.S. Department of Energy data.

Note: The rates for 8 long-haul fruit and vegetable truck corridors are included in the national rates, weighted by origin volume.



## AGRICULTURAL REFRIGERATED TRUCK QUARTERLY

Quarter 3, 2022

**Table 6: Average Diesel Fuel Prices and Truck Rates**

Year	Quarter	Diesel Fuel (\$/gallon)	Truck Rates (\$/mile) 501-1500 miles	% Change From			
				Last Quarter		Last Year	
				Diesel	Truck	Diesel	Truck
<b>2019</b>	Q3	3.02	2.47	-3%	-5%	-7%	-10%
	Q4	3.06	2.52	1%	2%	-6%	-11%
<b>2020</b>	Q1	2.90	2.56	-5%	2%	-4%	-1%
	Q2	2.43	2.51	-16%	-2%	-22%	-3%
	Q3	2.43	2.56	> -1%	2%	-20%	4%
	Q4	2.47	2.92	2%	14%	-19%	16%
<b>2021</b>	Q1	2.89	2.90	17%	-1%	> -1%	14%
	Q2	3.21	3.70	11%	27%	32%	47%
	Q3	3.36	3.21	5%	-13%	38%	25%
	Q4	3.66	3.48	9%	8%	48%	19%
<b>2022</b>	Q1	4.29	3.25	17%	-7%	48%	12%
	Q2	5.48	3.65	28%	12%	71%	-1%
	Q3	5.16	3.23	-6%	-12%	54%	1%

Sources: AMS Transportation Services Division analysis of AMS Specialty Crops Program Market News data and Energy Information Administration/U.S. Department of Energy data.

Note: Table values may not conform exactly due to rounding.



# AGRICULTURAL REFRIGERATED TRUCK QUARTERLY

Quarter 3, 2022

## Quarterly Truck Availability

**Table 7: U.S. Fresh Fruit and Vegetable Truck Availability**

Truck availability legend														
1=Surplus	2=Slight surplus	3=Adequate	4=Slight shortage				5=Shortage							
California, Central, And Western Arizona	Commodities	7/5	7/12	7/19	7/26	8/2	8/9	8/16	8/23	8/30	9/6	9/13	9/20	9/27
Kern District California	Carrots, Grapes	3	3	3	3	3	3	3	3	3	3	3	3	3
Northern California Including San Joaquin Valley	Pears			3	3	3	3	3	3	3	3	3	3	3
Oxnard District California	Artichokes, Fresh Cut Cabbage, Celery, Cilantro, Kale Greens, Leeks, Romaine Lettuce, Parsley, Radishes	3	3	3	3	3	3	3	3	3	3	3	3	3
Salinas-Watsonville California	Anise, Bok Choy, Broccoli, Brussels Sprouts, Cabbage, Cauliflower, Chinese Cabbage, Cilantro, Endive, Escarole, Kale Greens, Leeks, Boston Lettuce, Green Leaf Lettuce, Iceberg Lettuce, Red Leaf Lettuce, Romaine Lettuce, Parsley, Radishes, Spinach	3	3	3	3	3	3	3	3	3	3	3	3	3
San Joaquin Valley California	Grapes, Nectarines, Peaches, Plums						3	3	3	3	3	3	3	3
Santa Maria California	Anise, Bok Choy, Broccoli, Brussels Sprouts, Cabbage, Cauliflower, Celery, Chinese Cabbage, Cilantro, Endive, Escarole, Kale Greens, Leeks, Green Leaf Lettuce, Iceberg Lettuce, Red Leaf Lettuce, Romaine Lettuce, Parsley, Radishes, Spinach	3	3	3	3	3	3	3	3	3	3	3	3	3
South District California	Lemons, Oranges, Grapefruit, Avocados	3	3	3	3	3	3	3	3	3	3	3	3	3
Florida	Commodities	7/5	7/12	7/19	7/26	8/2	8/9	8/16	8/23	8/30	9/6	9/13	9/20	9/27
Florida West And South Carolina District	Tomatoes, Grape Tomatoes, Watermelons	5												
West District Florida	Cherry Tomatoes, Grape Tomatoes													3
Great Lakes (MI & WI)	Commodities	7/5	7/12	7/19	7/26	8/2	8/9	8/16	8/23	8/30	9/6	9/13	9/20	9/27
Central Wisconsin	Dry Onions, Potatoes	3	3	3					2	2	3	3	3	3

Source: AMS Transportation Services Division analysis of AMS Specialty Crops Program Market News data.

Note: Empty cells were not reported.





## AGRICULTURAL REFRIGERATED TRUCK QUARTERLY

Quarter 3, 2022

**Table 7, continued: U.S. Fresh Fruit and Vegetable Truck Availability**

Truck availability legend														
1=Surplus	2=Slight surplus	3=Adequate	4=Slight shortage					5=Shortage						
Pacific Northwest (ID, OR, & WA)	Commodities	7/5	7/12	7/19	7/26	8/2	8/9	8/16	8/23	8/30	9/6	9/13	9/20	9/27
<b>Columbia Basin Washington</b>	Dry Onions, Potatoes	2	2						3	3	3	3	3	3
<b>Upper Valley, Twin Falls-Burley District Idaho</b>	Potatoes	2	2	2	2	2	2	2	2	2	2	4	4	4
<b>Yakima Valley And Wenatchee District, Washington</b>	Apples, Pears, Cherries, Peaches, Prunes, Apricots	3	3	3	3	3	3	3	2	3	3	3	3	3
U.S.-Mexico border	Commodities	7/5	7/12	7/19	7/26	8/2	8/9	8/16	8/23	8/30	9/6	9/13	9/20	9/27
<b>Nogales, Arizona</b>	Cucumbers, Mangos, Yellow Squash Straightneck, Zucchini Squash, Grapes	1	1	3		1	1	1	1	1	1	1	1	2
<b>South Texas</b>	Asparagus, Broccoli, Carrots, Chayote, Cilantro, Cucumbers, Grapefruit, Limes, Mangos, Oranges, Papaya, Anaheim Peppers, Bell Peppers, Habanero Peppers, Jalapeno Peppers, Poblano Peppers, Serrano Peppers, Pineapples, Tomatillos, Tomatoes, Grape Tomatoes, Plum Tomatoes, Watermelons	1	1	1	1	1	1	1	1	1	1	1	1	1
Southeast (GA, SC, & NC)	Commodities	7/5	7/12	7/19	7/26	8/2	8/9	8/16	8/23	8/30	9/6	9/13	9/20	9/27
<b>Eastern North Carolina</b>	Sweet Potatoes	5	5	5	5	5	4	4	4	3	3	3	3	3
<b>Florida West And South Carolina District</b>	Tomatoes, Grape Tomatoes, Watermelons	5												
<b>Georgia</b>	Watermelons, Sweet Corn, Eggplant, Cucumbers	4	4	4										
<b>Vidalia District Georgia</b>	Dry Onions	3	3	3	3	3	3	3	3	3				

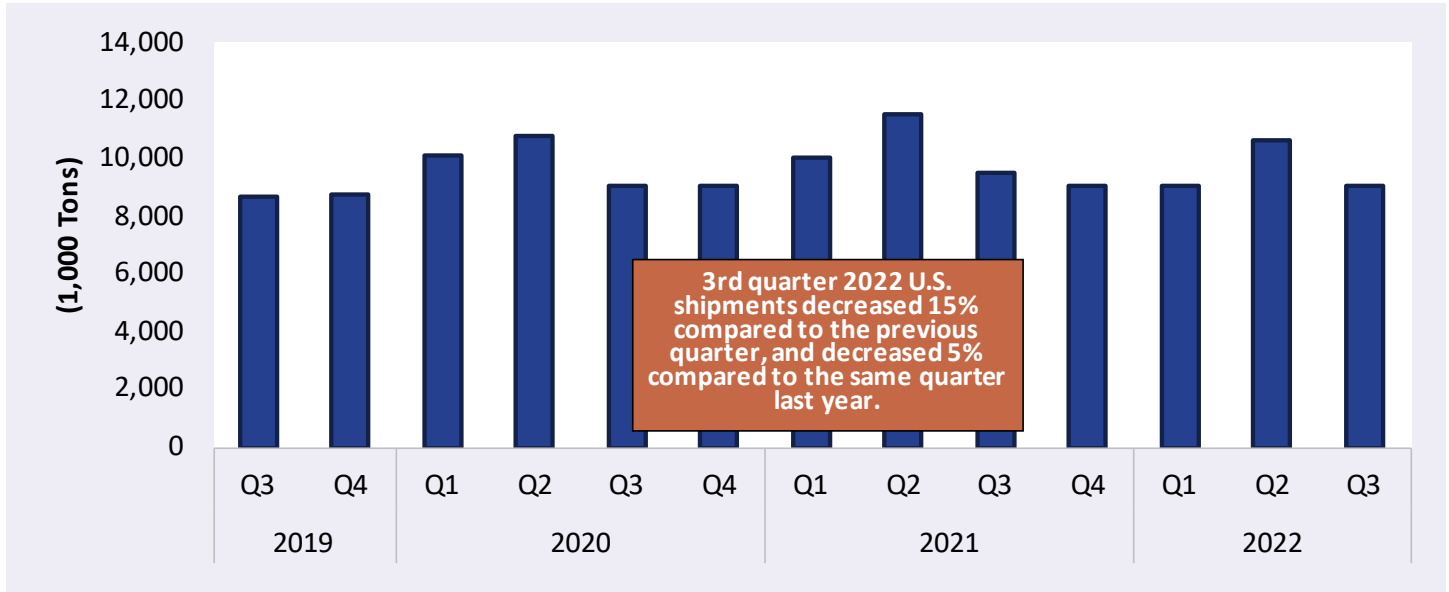
Source: AMS Transportation Services Division analysis of AMS Specialty Crops Program Market News data.

Note: Empty cells were not reported.



## Reported U.S. Shipments

**Figure 4: Reported U.S. Fruit and Vegetable Shipments (1,000 Tons)**



Source: AMS Transportation Services Division analysis of AMS Specialty Crops Program Market News data.

**Table 8: Reported U.S. Fruit and Vegetable Shipments (1,000 Tons)**

Year	1st Quarter	2nd Quarter	3rd Quarter	4th Quarter	Annual
2022	9,010	10,626	9,038		28,673
2021	10,051	11,520	9,498	9,034	40,103
2020	10,081	10,750	9,058	9,007	38,895
2019	9,381	10,246	8,687	8,714	37,028
2018	9,421	10,795	8,789	8,503	37,508
2017	8,072	9,642	8,479	8,267	34,459
2016	8,094	9,761	8,541	8,188	34,583
2015	8,118	9,630	8,324	7,771	33,842
2014	7,733	9,139	8,080	7,725	32,677
2013	7,451	8,972	7,762	7,527	31,712
2012	7,577	9,008	7,774	7,532	31,890
2011	7,007	8,981	7,887	7,988	31,863
2010	7,065	8,881	7,985	7,522	31,454
2009	7,158	8,728	7,990	7,270	31,147
2008	7,059	8,666	7,426	6,904	30,057
2007	6,959	8,585	7,475	7,099	30,118
2006	6,335	8,400	7,854	6,960	29,550

Source: AMS Transportation Services Division analysis of AMS Specialty Crops Program Market News data.

Note: Table values may not conform exactly due to rounding.



## Reported Shipments by Selected Commodities

**Table 9: Reported Top 10 Commodity Shipments (1,000 Tons)**

Commodity	3rd Quarter 2022	Previous Quarter	Same Quarter Last Year	Current Quarter as % change from:	
				Previous Qtr	Same Qtr Last Year
Potatoes	1,020	1,127	1,073	-9%	-5%
Watermelons, Seedless	955	1,553	1,032	-39%	-7%
Apples	590	722	614	-18%	-4%
Onions Dry	519	716	677	-28%	-23%
Grapes	396	400	411	-1%	-3%
Tomatoes	342	558	478	-39%	-28%
Strawberries	307	570	344	-46%	-11%
Lettuce, Iceberg	305	354	353	-14%	-14%
Cucumbers	291	602	450	-52%	-35%
Tomatoes, Plum Type	265	559	476	-52%	-44%

Source: AMS Transportation Services Division analysis of AMS Specialty Crops Program Market News data.  
Note: Table values may not conform exactly due to rounding.

**Table 10: Reported Top 10 Regions (1,000 Tons)**

Origin	3rd Quarter 2022 Volume	% Change from Last Quarter	% Change From Same Quarter Last Year
California	2980	4%	-6%
Mexico	2210	-34%	0%
PNW	1377	4%	-7%
Canada	608	52%	17%
Southeast	401	-38%	-5%
Great Lakes	315	173%	-3%
Mid-Atlantic	185	1,622%	11%
Indiana	177	n/a	-17%
Texas	138	-37%	-26%
Colorado	133	-28%	-17%

Source: AMS Transportation Services Division analysis of AMS Specialty Crops Program Market News data.  
Note: Table values may not conform exactly due to rounding.  
Note: Due to a lack of rate and availability data, Canada is excluded from the Regional Markets section of this report.



# REGIONAL MARKETS

## California

### Volume

In third quarter 2022, USDA reported total shipments of fruits and vegetables from California were 2.98 million tons—a 6-percent decrease from third quarter 2021 (year to year). The sum of the top five commodities shipped from California increased 1 percent year to year. Two of the top five commodities saw year-to-year increases, including watermelons, seedless (up 51 percent), and lettuce, romaine (up 2 percent). Shipments of lettuce, iceberg, decreased 11 percent; shipments of strawberries decreased 4 percent; and shipments of grapes decreased 3 percent.

### Rates

In third quarter 2022, truck rates for shipments between 501 miles and 1,500 miles averaged \$4.56 per mile. This was down 3 percent from second quarter 2022 to third quarter 2022 (quarter to quarter) and down 4 percent year to year.

### Truck Overview

Diesel fuel prices averaged \$6.29 per gallon—a 4-percent decrease quarter to quarter and a 47-percent increase year to year. Throughout the quarter, monthly average truck availability was reported as adequate for all California districts.

**Table 11: Reported Top Five Commodities Shipped from California (1,000 tons)**

Commodity	3rd Quarter 2022	Share of California Total	Previous Quarter	Same Quarter Last Year	Current Quarter as % change from:	
					Previous Qtr	Same Qtr Last Year
Grapes	384	13%	15	396	2,394%	-3%
Strawberries	302	10%	396	314	-24%	-4%
Lettuce, Iceberg	275	9%	284	307	-3%	-11%
Lettuce, Romaine	261	9%	273	255	-5%	2%
Watermelons, Seedless	207	7%	36	137	473%	51%
<b>Top 5 Total</b>	<b>1,429</b>	<b>48%</b>	<b>1,006</b>	<b>1,409</b>	<b>42%</b>	<b>1%</b>
<b>California Total</b>	<b>2,980</b>	<b>100%</b>	<b>2,861</b>	<b>3,176</b>	<b>4%</b>	<b>-6%</b>

Source: AMS Transportation Services Division analysis of AMS Specialty Crops Program Market News data.

Any "-" in the table indicates no reported shipments during the quarter or a percentage change with an at- or near-zero denominator.

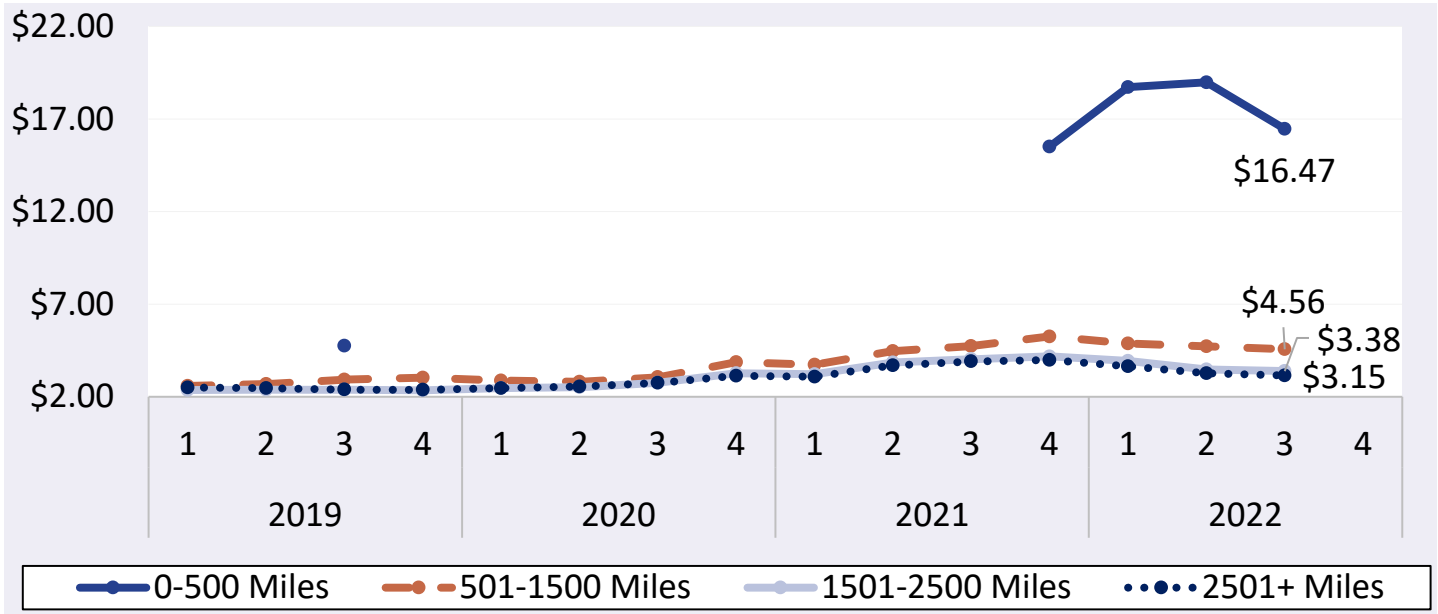
Note: Table values may not conform exactly due to rounding.



# AGRICULTURAL REFRIGERATED TRUCK QUARTERLY

Quarter 3, 2022

**Figure 5: California Truck Rates (\$/Mile by Distance Travelled)**



Source: AMS Transportation Services Division analysis of AMS Specialty Crops Program Market News data.  
Any gaps in the chart lines are the result of quarters with no reported data for the region.

**Table 12: California Truck Overview (Availability Rating: 1=Surplus to 5=Shortage)**

Region/Reporting District	July	August	September	3rd Quarter
Kern District California	3	3	3	3
Northern California Including San Joaquin Valley	3	3	3	3
Oxnard District California	3	3	3	3
Salinas-Watsonville California	3	3	3	3
San Joaquin Valley California	-	3	3	3
Santa Maria California	3	3	3	3
South District California	3	3	3	3
Regional Average Availability	3	3	3	3
Diesel Fuel Price (\$/gallon)	6.59	6.12	6.15	6.29

Source: AMS Transportation Services Division analysis of AMS Specialty Crops Program Market News data.

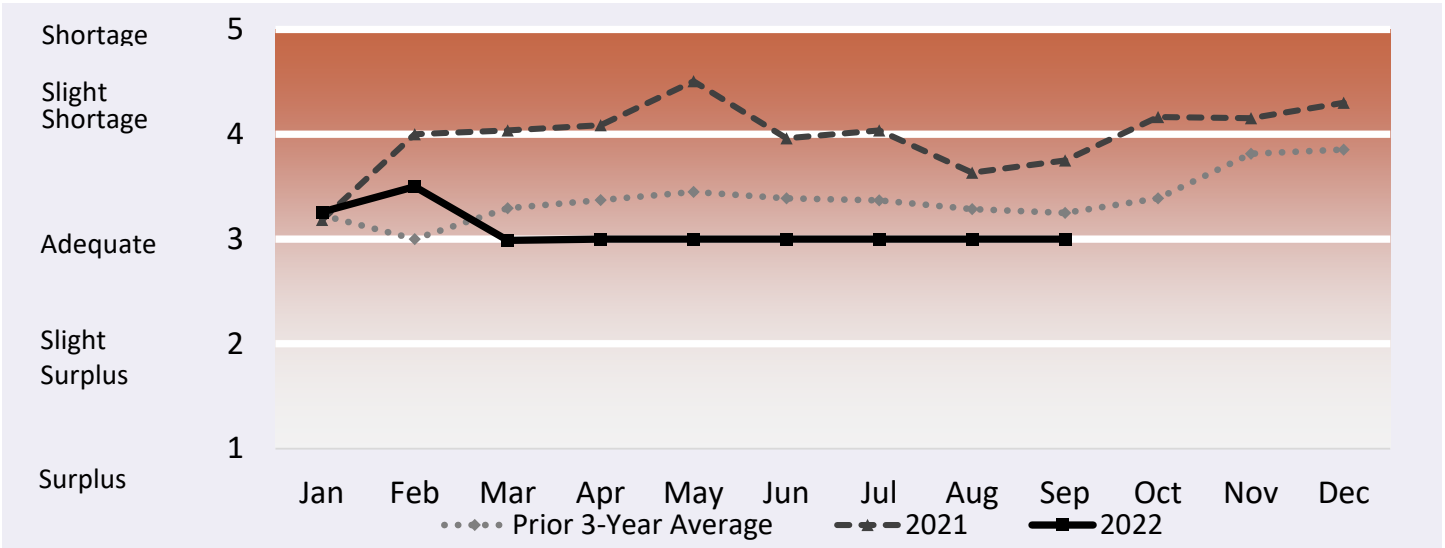
Any "-" in the table indicates no reported shipments during the quarter.

Note: Table values may not conform exactly due to rounding.

Note: AMS Specialty Crops Program defines regions by commodity, which may overlap in truck availability reporting.



**Figure 6: Refrigerated Truck Availability Monthly Ratings for California**



Source: AMS Transportation Services Division analysis of AMS Specialty Crops Program Market News data.  
 Any gaps in the chart lines are the result of quarters with no reported data for the region.



## U.S.-Mexico Border

### Volume

Total reported shipments of fruits and vegetables from Mexico in third quarter 2022 were 2.21 million tons—flat compared to the same quarter of 2021. The sum of the top five commodities shipped from the U.S.-Mexico border increased 1 percent year to year. Two of the top 5 commodities saw year-to-year increases in the third quarter, including mangoes (up 13 percent) and tomatoes, plum type (up 6 percent). Shipments of limes decreased 7 percent; shipments of avocados decreased 2 percent; and shipments of cucumbers decreased 2 percent.

### Rates

The quarterly average truck rate for shipments between 501 miles and 1,500 miles from Arizona-Mexico border crossings was \$2.86 per mile—a 17-percent decrease quarter to quarter and a 36-percent increase year to year. Rates for shipments between 501 miles and 1,500 miles from Texas-Mexico border crossings averaged \$3.01 per mile—down 14 percent quarter to quarter and up 4 percent year to year.

### Truck Overview

Diesel fuel prices for border crossings from Arizona averaged \$5.42 per gallon—a 4-percent decrease quarter to quarter and a 49-percent increase year to year. Diesel fuel prices for border crossings from Texas averaged \$4.85 per gallon—down 6 percent quarter to quarter and up 57 percent year to year. Mexico crossings through Nogales, AZ, reported a slight surplus of trucks in July and September, and a surplus in August. Mexico crossings through the South Texas district reported a surplus of trucks throughout the quarter.

**Table 13: Reported Top Five Commodities Shipped from Mexico (1,000 tons)**

Commodity	3rd Quarter 2022	Share of Mexico-Total Total	Previous Quarter	Same Quarter Last Year	Current Quarter as % change from:	
					Previous Qtr	Same Qtr Last Year
Tomatoes, Plum Type	230	10%	260	216	-12%	6%
Avocados	216	10%	199	221	9%	-2%
Limes	197	9%	160	211	23%	-7%
Mangoes	184	8%	168	162	10%	13%
Cucumbers	153	7%	242	156	-37%	-2%
<b>Top 5 Total</b>	<b>979</b>	<b>44%</b>	<b>1,029</b>	<b>965</b>	<b>-5%</b>	<b>1%</b>
<b>Mexico Total</b>	<b>2,210</b>	<b>100%</b>	<b>3,366</b>	<b>2,209</b>	<b>-34%</b>	<b>&lt; 1%</b>

Source: AMS Transportation Services Division analysis of AMS Specialty Crops Program Market News data.

Any "-" in the table indicates no reported shipments during the quarter or a percentage change with an at- or near-zero denominator.

Note: Table values may not conform exactly due to rounding.



## AGRICULTURAL REFRIGERATED TRUCK QUARTERLY

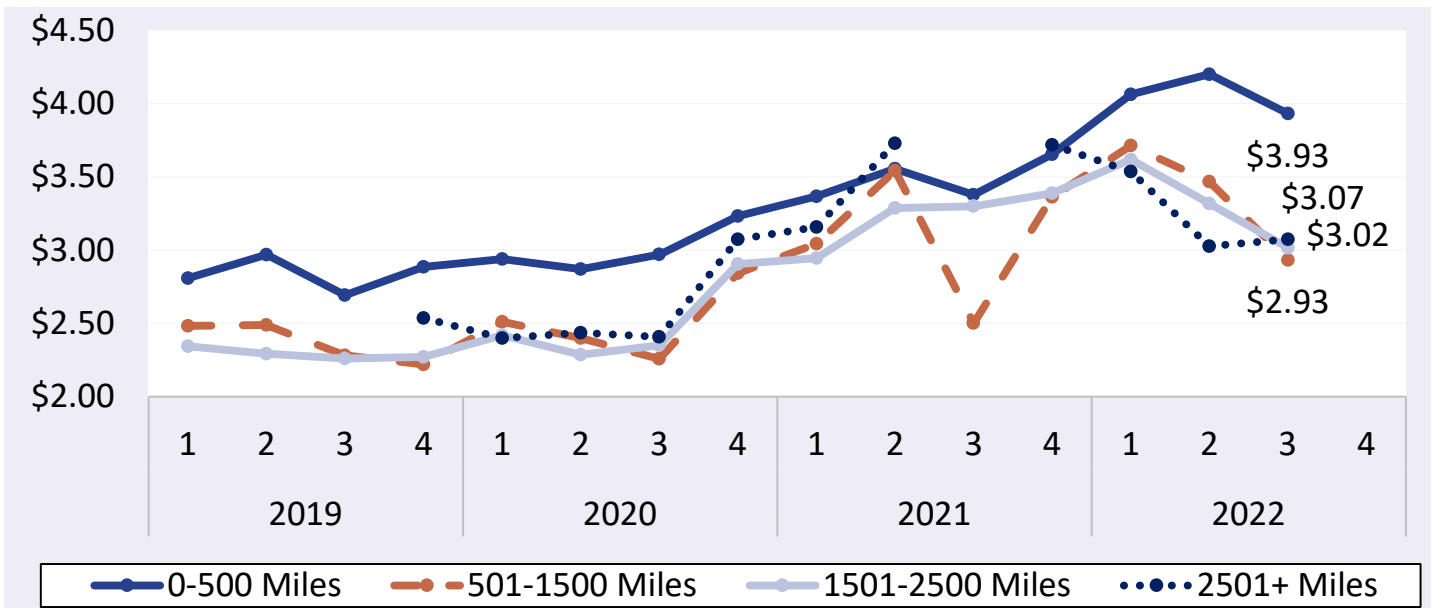
Quarter 3, 2022

**Table 14: Top 5 Commodities Shipped to U.S. from Mexico by State of Entry (1,000 tons)**

Texas		California		Arizona		New Mexico	
Commodity	3rd Quarter 2022	Commodity	3rd Quarter 2022	Commodity	3rd Quarter 2022	Commodity	3rd Quarter 2022
Avocados	207	Tomatoes, Plum Type	82	Mangoes	66	Peppers, Other	38
Limes	168	Cucumbers	68	Tomatoes	26	Onions Dry	6
Tomatoes, Plum Type	135	Misc Tropical	43	Cucumbers	17	Misc Tropical	< 1
Mangoes	116	Onions Green	37	Tomatoes, Plum Type	12	Onions Green	< 1
Tomatoes	99	Peppers, Other	29	Peppers, Bell Type	10		
<b>Mexico through TX Total</b>	<b>1,463</b>	<b>Mexico through CA Total</b>	<b>478</b>	<b>Mexico through AZ Total</b>	<b>225</b>	<b>Mexico through NM Total</b>	<b>44</b>

Source: AMS Transportation Services Division analysis of AMS Specialty Crops Program Market News data.  
 Any "-" in the table indicates no reported shipments during the quarter.  
 Note: Table values may not conform exactly due to rounding.

**Figure 7: Truck Rates from U.S.-Mexico Border (\$/Mile by Distance Traveled)**



Source: AMS Transportation Services Division analysis of AMS Specialty Crops Program Market News data.  
 Any gaps in the chart lines are the result of quarters with no reported data for the region.

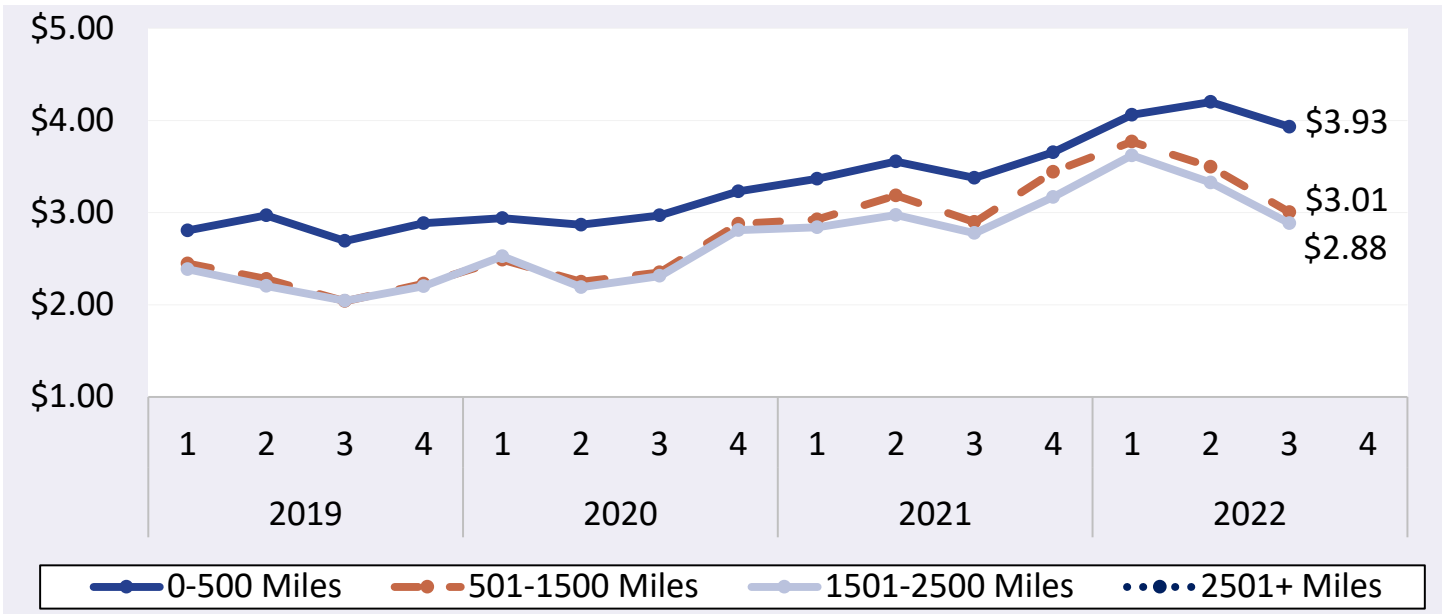




# AGRICULTURAL REFRIGERATED TRUCK QUARTERLY

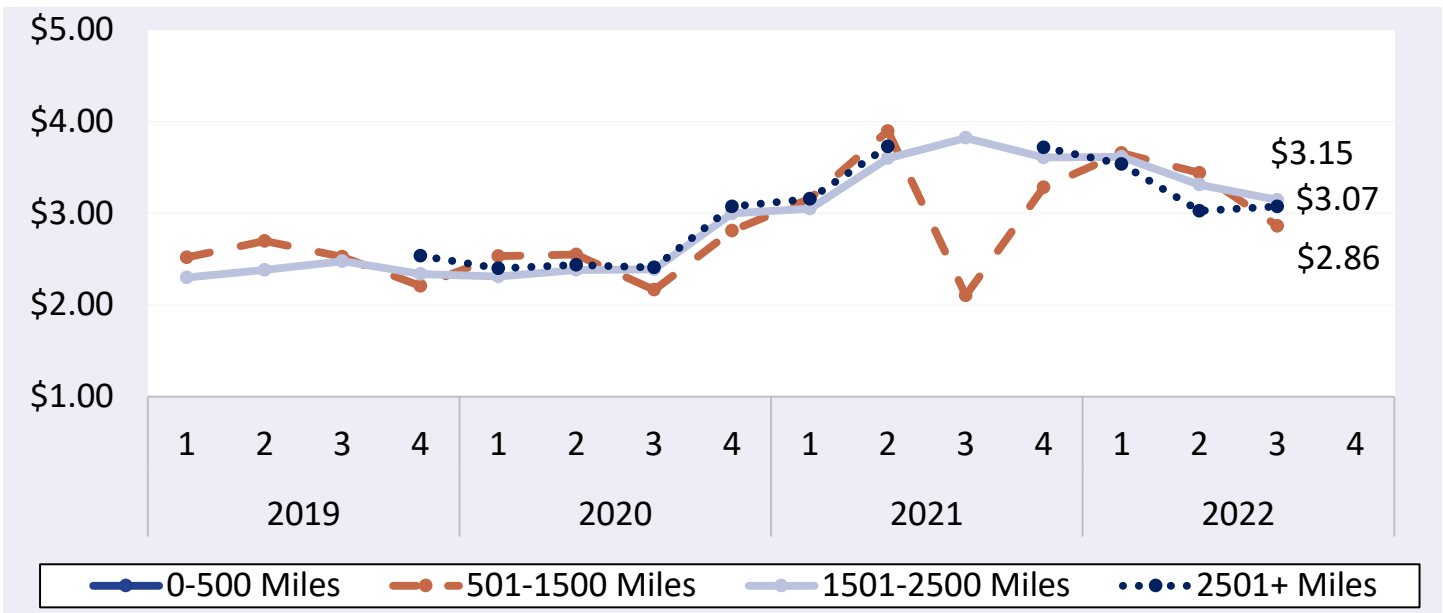
Quarter 3, 2022

**Figure 8: Texas Truck Rates from U.S.-Mexico Border (\$/Mile by Distance Traveled)**



Source: AMS Transportation Services Division analysis of AMS Specialty Crops Program Market News data. Any gaps in the chart lines are the result of quarters with no reported data for the region.

**Figure 9: Arizona Truck Rates from U.S.-Mexico Border (\$/Mile by Distance Traveled)**



Source: AMS Transportation Services Division analysis of AMS Specialty Crops Program Market News data. Any gaps in the chart lines are the result of quarters with no reported data for the region.



## AGRICULTURAL REFRIGERATED TRUCK QUARTERLY

### Quarter 3, 2022

**Table 15: Truck Overview from the U.S.-Mexico Border**

Region/Reporting District	July	August	September	3rd Quarter
Mexico Crossings Through Nogales, Arizona	1.74	1	1.71	1.49
Mexico Crossings Through South Texas	1.15	1	1	1.05
Regional Average Availability	1.45	1	1.36	1.27
Diesel Fuel Price (\$/gallon), through Texas	5.14	4.71	4.72	4.85
Diesel Fuel Price (\$/gallon), through Arizona	5.84	5.24	5.18	5.42

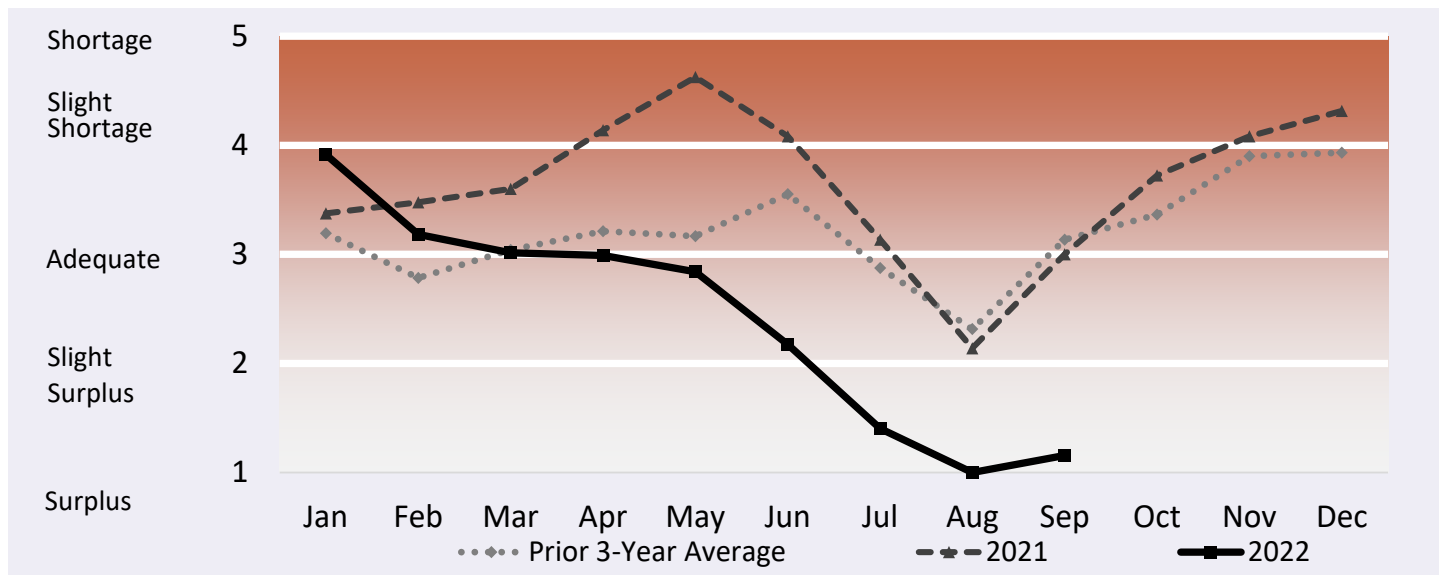
Source: AMS Transportation Services Division analysis of AMS Specialty Crops Program Market News data.

Any "-" in the table indicates no reported shipments during the quarter.

Note: Table values may not conform exactly due to rounding.

Note: AMS Specialty Crops Program defines regions by commodity, which may overlap in truck availability reporting.

**Figure 10: Refrigerated Truck Availability Monthly Ratings from the U.S-Mexico Border**



Source: AMS Transportation Services Division analysis of AMS Specialty Crops Program Market News data.

Any gaps in the chart lines are the result of quarters with no reported data for the region.



# AGRICULTURAL REFRIGERATED TRUCK QUARTERLY

Quarter 3, 2022

## PNW

### Volume

In third quarter 2022, total reported shipments of fruits and vegetables from PNW were 1.38 million tons, decreasing 7 percent year to year. The sum of the top five commodities shipped from PNW also decreased 7 percent year to year. Except for blueberries (2-percent increase), the rest of the top five commodities saw year-to-year decreases: potatoes (down 11 percent); onions, dry (down 6 percent); apples (down 5 percent); and cherries (down 4 percent).

### Rates

The quarterly average truck rate for shipments between 501 miles and 1,500 miles was \$2.62 per mile, decreasing 8 percent quarter to quarter and increasing 4 percent year to year.

### Truck Overview

Diesel fuel prices averaged \$5.42 per gallon—a 4-percent decrease quarter to quarter and a 49-percent increase year to year. The Columbia Basin district reported a slight surplus of trucks in July and adequate truck availability in August and September. The Upper Valley and Twin Falls-Burley district reported a slight surplus of trucks in July and August, and adequate availability in September. The Yakima Valley and Wenatchee district reported an adequate availability of trucks throughout the quarter.

**Table 16: Reported Top Five Commodities Shipped from PNW (1,000 tons)**

Commodity	3rd Quarter 2022	Share of PNW Total	Previous Quarter	Same Quarter Last Year	Current Quarter as % change from:	
					Previous Qtr	Same Qtr Last Year
<b>Apples</b>	540	39%	664	566	-19%	-5%
<b>Potatoes</b>	430	31%	440	483	-2%	-11%
<b>Onions Dry</b>	222	16%	107	236	108%	-6%
<b>Cherries</b>	101	7%	31	105	225%	-4%
<b>Blueberries</b>	36	3%	-	35	-	2%
<b>Top 5 Total</b>	<b>1,329</b>	<b>97%</b>	<b>1,242</b>	<b>1,426</b>	<b>7%</b>	<b>-7%</b>
<b>PNW Total</b>	<b>1,377</b>	<b>100%</b>	<b>1,323</b>	<b>1,476</b>	<b>4%</b>	<b>-7%</b>

Source: AMS Transportation Services Division analysis of AMS Specialty Crops Program Market News data.

Any "-" in the table indicates no reported shipments during the quarter or a percentage change with an at- or near-zero denominator.

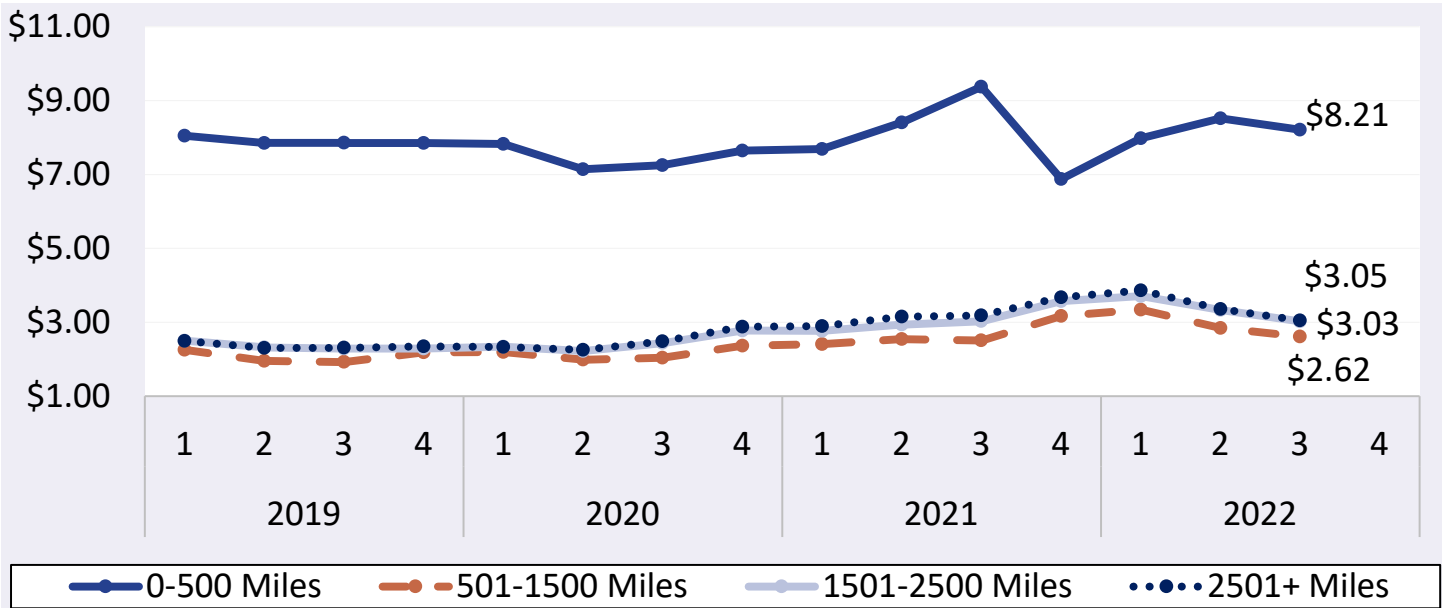
Note: Table values may not conform exactly due to rounding.



# AGRICULTURAL REFRIGERATED TRUCK QUARTERLY

Quarter 3, 2022

**Figure 11: PNW Truck Rates (\$/Mile by Distance Travelled)**



Source: AMS Transportation Services Division analysis of AMS Specialty Crops Program Market News data. Any gaps in the chart lines are the result of quarters with no reported data for the region.

**Table 17: PNW Truck Overview (Availability Rating: 1=Surplus to 5=Shortage)**

Region/Reporting District	July	August	September	3rd Quarter
Columbia Basin Washington	2	3	3	2.67
Upper Valley, Twin Falls-Burley District Idaho	2	2	3.46	2.49
Yakima Valley And Wenatchee District, Washington	3	2.8	3	2.93
<b>Regional Average Availability</b>	2.33	2.6	3.15	2.70
<b>Diesel Fuel Price (\$/gallon)</b>	5.84	5.24	5.18	5.42

Source: AMS Transportation Services Division analysis of AMS Specialty Crops Program Market News data. Any "-" in the table indicates no reported shipments during the quarter.

Note: Table values may not conform exactly due to rounding.

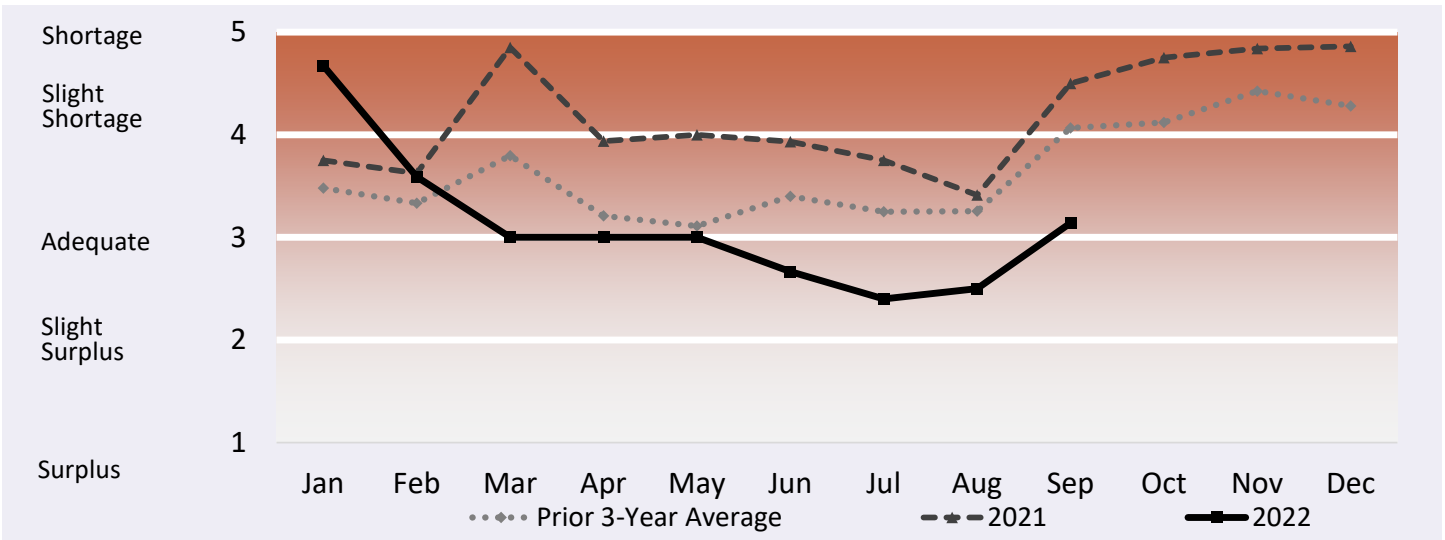
Note: AMS Specialty Crops Program defines regions by commodity, which may overlap in truck availability reporting.



# AGRICULTURAL REFRIGERATED TRUCK QUARTERLY

## Quarter 3, 2022

**Figure 12: Refrigerated Truck Availability Monthly Ratings for PNW**



Source: AMS Transportation Services Division analysis of AMS Specialty Crops Program Market News data.  
 Any gaps in the chart lines are the result of quarters with no reported data for the region.



## Southeast

### Volume

During third quarter 2022, total reported shipments of fruits and vegetables from the Southeast were 401,000 tons, down 5 percent year to year. The sum of the top five commodities shipped from the Southeast decreased 4 percent year to year. Three of the top 5 commodities saw year-to-year decreases in the third quarter, including peaches (down 31 percent); onions, dry (down 13 percent); and watermelons, seedless (down 5 percent). Shipments of sweet potatoes increased by 24 percent and shipments of peppers, bell type, increased by 16 percent.

### Rates

The quarterly average truck rate for shipments between 501 miles and 1,500 miles was \$6.39 per mile—up 30 percent quarter to quarter and up 24 percent year to year.

### Truck Overview

Diesel fuel prices averaged \$5.04 per gallon—down 7 percent quarter to quarter and up 56 percent year to year. The Eastern North Carolina district reported a shortage of trucks in July, a slight shortage in August, and an adequate availability of trucks in September. The Florida West and South Carolina district reported a shortage of trucks in July, and did not report for August or September. The Georgia district reported a slight shortage of trucks in July and did not report for August or September. The Vidalia district reported an adequate availability of trucks in July and August, and did not report in September.

**Table 18: Reported Top Five Commodities Shipped from Southeast (1,000 tons)**

Commodity	3rd Quarter 2022	Share of Southeast Total	Previous Quarter	Same Quarter Last Year	Current Quarter as % change from:	
					Previous Qtr	Same Qtr Last Year
Watermelons, Seedless	219	55%	253	231	-13%	-5%
Sweet Potatoes	53	13%	66	42	-21%	24%
Onions Dry	44	11%	79	51	-44%	-13%
Peaches	19	5%	8	28	151%	-31%
Peppers, Bell Type	13	3%	22	11	-40%	16%
<b>Top 5 Total</b>	<b>349</b>	<b>87%</b>	<b>428</b>	<b>363</b>	<b>-19%</b>	<b>-4%</b>
<b>Southeast Total</b>	<b>401</b>	<b>100%</b>	<b>648</b>	<b>421</b>	<b>-38%</b>	<b>-5%</b>

Source: AMS Transportation Services Division analysis of AMS Specialty Crops Program Market News data.

Any "-" in the table indicates no reported shipments during the quarter or a percentage change with an at- or near-zero denominator.

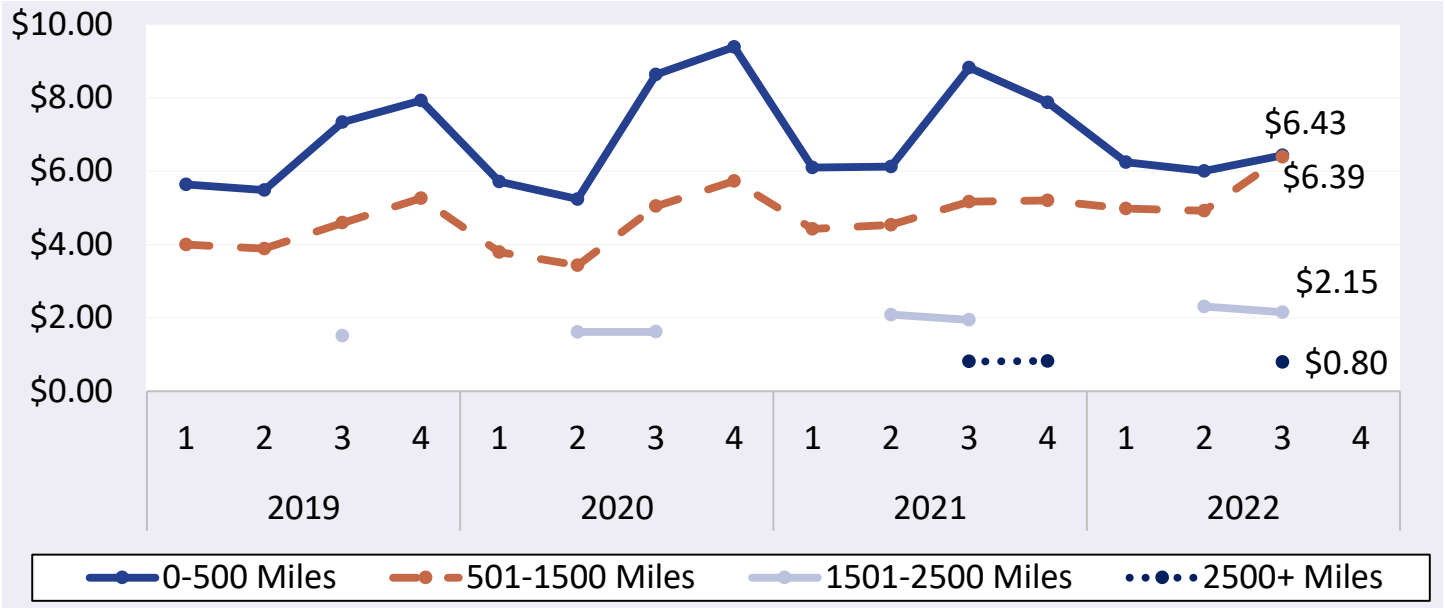
Note: Table values may not conform exactly due to rounding.



# AGRICULTURAL REFRIGERATED TRUCK QUARTERLY

Quarter 3, 2022

**Figure 13: Southeast Truck Rates (\$/Mile by Distance Travelled)**



Source: AMS Transportation Services Division analysis of AMS Specialty Crops Program Market News data. Any gaps in the chart lines are the result of quarters with no reported data for the region.

**Table 19: Southeast Truck Overview (Availability Rating: 1=Surplus to 5=Shortage)**

Region/Reporting District	July	August	September	3rd Quarter
Eastern North Carolina	5	4	3	4
Florida West And South Carolina District	5	-	-	5
Georgia	3.8	-	-	3.8
Vidalia District Georgia	3	3	-	3
<b>Regional Average Availability</b>	<b>4.2</b>	<b>3.5</b>	<b>3</b>	<b>3.57</b>
<b>Diesel Fuel Price (\$/gallon)</b>	<b>5.39</b>	<b>4.90</b>	<b>4.84</b>	<b>5.04</b>

Source: AMS Transportation Services Division analysis of AMS Specialty Crops Program Market News data.

Any "-" in the table indicates no reported shipments during the quarter.

Note: Table values may not conform exactly due to rounding.

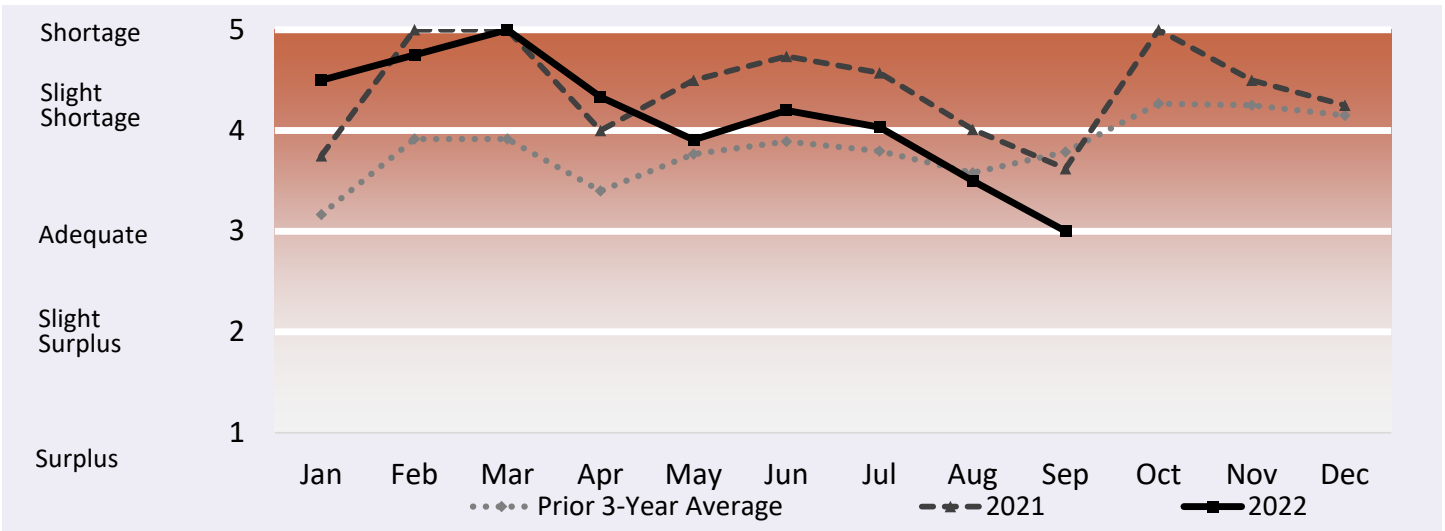
Note: AMS Specialty Crops Program defines regions by commodity, which may overlap in truck availability reporting.



# AGRICULTURAL REFRIGERATED TRUCK QUARTERLY

## Quarter 3, 2022

**Figure 14: Refrigerated Truck Availability Monthly Ratings for Southeast**



Source: AMS Transportation Services Division analysis of AMS Specialty Crops Program Market News data.  
 Any gaps in the chart lines are the result of quarters with no reported data for the region.





## Great Lakes

### Volume

Total reported shipments of fruits and vegetables from the Great Lakes in third quarter 2022 were 315,000 tons, down 3 percent year to year. The sum of the top five commodities shipped from the Great Lakes decreased 1 percent year to year. Three of the top five commodities decreased year to year, including cucumbers (down 18 percent); peppers, bell type (down 12 percent); and potatoes (down 7 percent). Shipments of cabbage increased 47 percent and shipments of watermelons, seedless increased 19 percent.

### Rates

The quarterly average truck rate for shipments between 501 miles and 1,500 miles was \$4.75 per mile—down 6 percent quarter to quarter and up 10 percent year to year.

### Truck Overview

Diesel fuel prices averaged \$5.16 per gallon—down 3 percent quarter to quarter and up 58 percent year to year. The Central Wisconsin district reported adequate truck availability in July and September, and a slight surplus of trucks in August.

**Table 20: Reported Top Five Commodities Shipped from Great Lakes (1,000 tons)**

Commodity	3rd Quarter 2022	Share of Great Lakes Total	Previous Quarter	Same Quarter Last Year	Current Quarter as % change from:	
					Previous Qtr	Same Qtr Last Year
Potatoes	131	42%	96	141	36%	-7%
Watermelons, Seedless	55	18%	-	46	-	19%
Cucumbers	24	8%	< 1	29	-	-18%
Cabbage	21	7%	1	14	1,954%	47%
Peppers, Bell Type	19	6%	-	22	-	-12%
<b>Top 5 Total</b>	<b>250</b>	<b>79%</b>	<b>98</b>	<b>252</b>	<b>156%</b>	<b>-1%</b>
<b>Great Lakes Total</b>	<b>315</b>	<b>100%</b>	<b>116</b>	<b>324</b>	<b>173%</b>	<b>-3%</b>

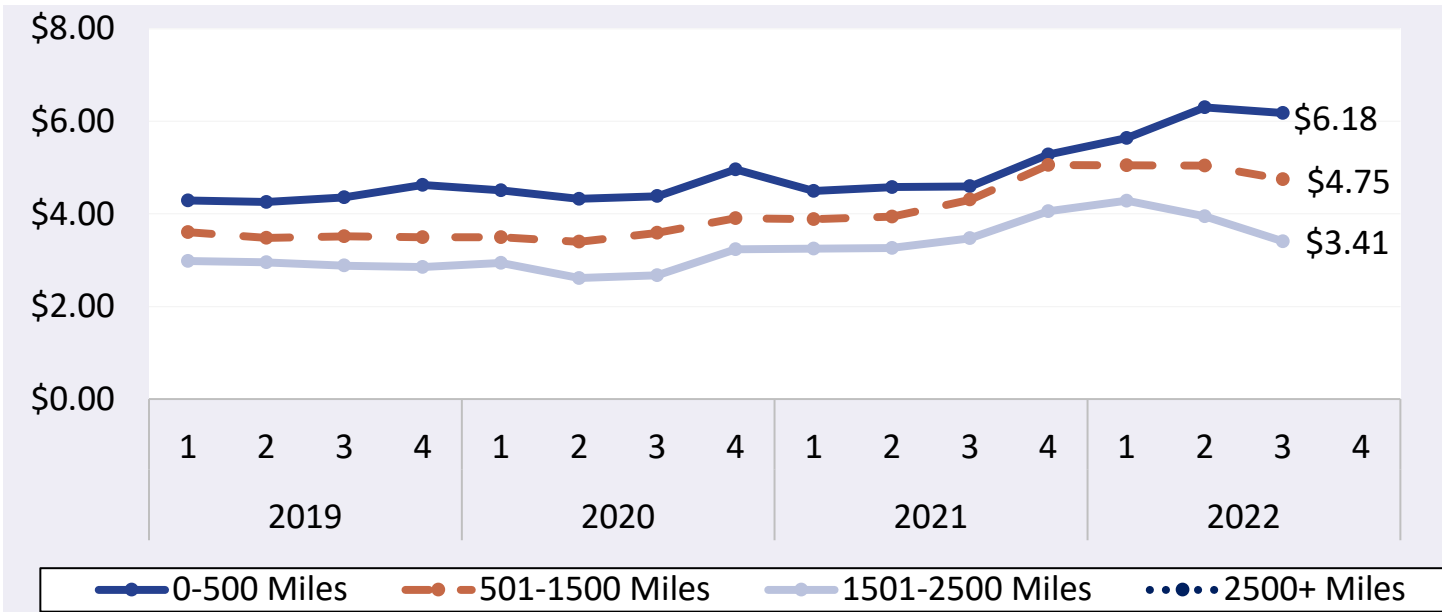
Source: AMS Transportation Services Division analysis of AMS Specialty Crops Program Market News data.

Any "-" in the table indicates no reported shipments during the quarter or a percentage change with an at- or near-zero denominator.

Note: Table values may not conform exactly due to rounding.



Figure 15: Great Lakes Truck Rates (\$/Mile by Distance Travelled)



Source: AMS Transportation Services Division analysis of AMS Specialty Crops Program Market News data. Any gaps in the chart lines are the result of quarters with no reported data for the region.

Table 21: Great Lakes Truck Overview (Availability Rating: 1=Surplus to 5=Shortage)

Region/Reporting District	July	August	September	3rd Quarter
Central Wisconsin	3	2	3	2.67
Regional Average Availability	3	2	3	2.67
Diesel Fuel Price (\$/gallon)	5.46	5	5.02	5.16

Source: AMS Transportation Services Division analysis of AMS Specialty Crops Program Market News data.

Any "-" in the table indicates no reported shipments during the quarter.

Note: Table values may not conform exactly due to rounding.

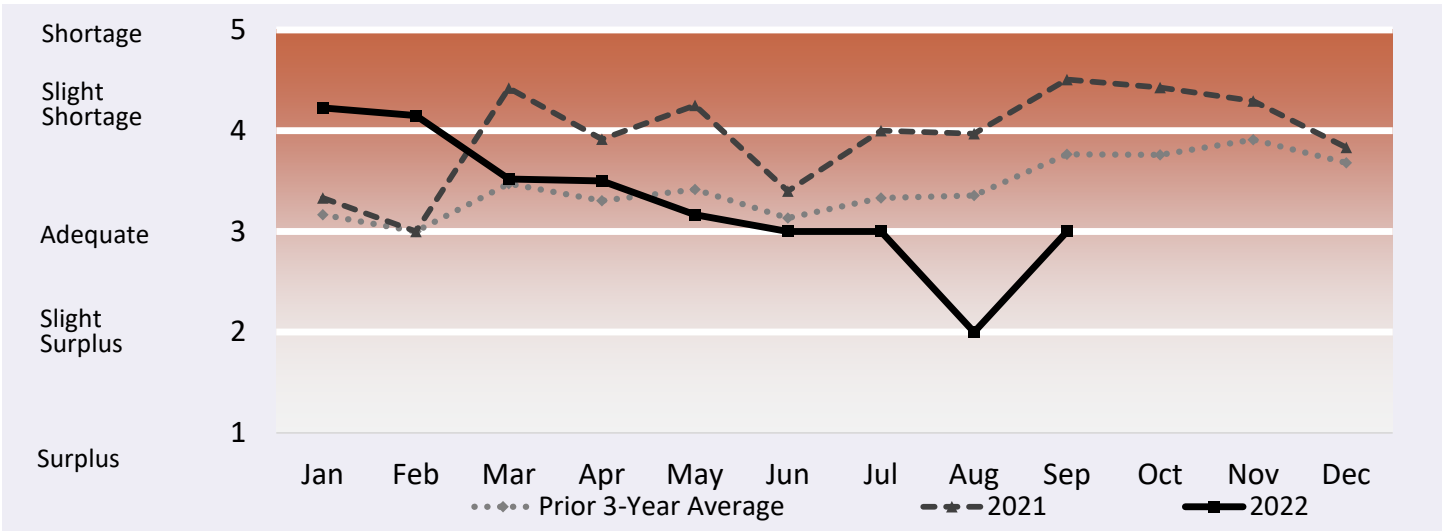
Note: AMS Specialty Crops Program defines regions by commodity, which may overlap in truck availability reporting.



## AGRICULTURAL REFRIGERATED TRUCK QUARTERLY

Quarter 3, 2022

**Figure 16: Refrigerated Truck Availability Monthly Ratings for Great Lakes**



Source: AMS Transportation Services Division analysis of AMS Specialty Crops Program Market News data. Any gaps in the chart lines are the result of quarters with no reported data for the region.



# ADDITIONAL INFORMATION

## Terms and References

### Data Reporting and Publication Window

The publication date of each Agricultural Refrigerated Truck Quarterly (AgRTQ) depends on the timing of data reporting. Reporting of truck shipments in some regions can be delayed 2-3 months past their respective quarter. We publish the AgRTQ one month after that lag in order to capture a more complete picture of truck shipments during the quarter.

### Data Sources

This information is compiled from the weekly Specialty Crops Truck Rate Report by USDA, Agricultural Marketing Service (AMS), Specialty Crops Program, Market News Division. The website is:

<https://www.marketnews.usda.gov/mnp/fv-home>.

### Regional Markets

For the regional markets, some States are grouped into producing regions. The Pacific Northwest region includes Idaho, Oregon, and Washington. The Great Lakes region includes Michigan, Minnesota, and Wisconsin. The Southeast region includes North Carolina, South Carolina and Georgia.

### Shipment Volumes

Truck shipments for all commodities and origins are not available. Those obtainable are reported, but should not be interpreted as representing complete movements of a commodity. Truck shipments from all States are collected at shipping points and include both interstate and intrastate movements. They are obtained from various sources, including Federal marketing orders, administrative committees, Federal State Inspection Service, and shippers. Volume amounts are represented in 10,000 pound units, or 1,000 10-lb packages but are converted to 1,000 tons for this report. Mexican border crossings through Arizona and Texas data is obtained from the Department of Homeland Security (DHS), U.S. Customs and Border and Protection (CBP) through USDA, AMS, Market News.

### Rates

This information is compiled from the weekly Specialty Crops Truck Rate Report. Rates quoted represent open (spot) market rates that shippers or receivers pay depending on basis of sale, per load, including truck brokers fees for shipments in truck load volume to a single destination. Extra charges for delivery to terminal markets, multipickup and multidrop shipments are not included unless otherwise stated. Rates are based on the most usual loads in 48-53 foot trailers from the origin shipping area to the destination receiving city. In areas where rates are based on package rates, per load rates were derived by multiplying the package rate by the number of packages in the most usual load in a 48-53 foot trailer. Slightly cheaper rates will be reported during Quarters 2 and 3 as about 50 percent of onion shipments from California are hauled on open flatbed trailers. During Quarter 3, less than 20 percent of onions hauled from Washington, Idaho, and Oregon are on open flatbeds.

### Regional Rates

Rate data for 10 destination markets are used to calculate average origin regional rates.

### National Rates

The national rates reflect the average of the regional rates, separated by mileage category and weighted by volume between origin and destination.



## Contact Us

### Authors

**Kranti Mulik**, Coordinator; Analyst

[Kranti.Mulik@usda.gov](mailto:Kranti.Mulik@usda.gov), 202.756.2577

**Jesse Gastelle**, Analyst

[Jesse.Gastelle@usda.gov](mailto:Jesse.Gastelle@usda.gov), 202.690.1144

**Alexis Heyman**, Analyst

[Alexis.Heyman@usda.gov](mailto:Alexis.Heyman@usda.gov)

**Patty Willkie**, Specialty Crops Program and Market News Division Data

[Patty.Willkie@usda.gov](mailto:Patty.Willkie@usda.gov), 202.720.2175

Please sign up by entering your email address at the following link and selecting your preference to receive Transportation Research and Analysis:

[https://public.govdelivery.com/accounts/USDAAMS/subscriber/new?topic\\_id=USDAAMS\\_177](https://public.govdelivery.com/accounts/USDAAMS/subscriber/new?topic_id=USDAAMS_177)

For assistance with accessibility issues related to this document, please e-mail [SharonC.Williams@usda.gov](mailto:SharonC.Williams@usda.gov).

### Related Websites

USDA's Agricultural Transportation Open Data Platform

<https://agtransport.usda.gov/>

Specialty Crops Program

<https://www.ams.usda.gov/about-ams/programs-offices/specialty-crops-program>

Specialty Crops Truck Rate Report

[https://mymarketnews.ams.usda.gov/filerepo/reports?field\\_slug\\_id\\_value=2375](https://mymarketnews.ams.usda.gov/filerepo/reports?field_slug_id_value=2375)

Specialty Crops Movement Reporting

<https://www.marketnews.usda.gov/mnp/fv-report-config-step1?type=movement>

Economic Research Service Vegetable and Pulses

<https://www.ers.usda.gov/topics/crops/vegetables-pulses/>

Economic Research Service Fruit and Tree Nuts

<https://www.ers.usda.gov/topics/crops/fruit-tree-nuts.aspx>

National Agricultural Statistics Service, Crops

[https://www.nass.usda.gov/Statistics\\_by\\_Subject/index.php?sector=CROPS](https://www.nass.usda.gov/Statistics_by_Subject/index.php?sector=CROPS)

Refrigerated Truck Quarterly Datasets

<https://www.ams.usda.gov/services/transportation-analysis/agricultural-refrigerated-truck-quarterly-datasets>

Protecting Perishable Foods During Transport by Truck and Rail

<https://edis.ifas.ufl.edu/pdffiles/HS/HS132800.pdf>

### Preferred Citation

U.S. Department of Agriculture, Agricultural Marketing Service. *Agricultural Refrigerated Truck Quarterly Report*. February 2023 Web. <<https://dx.doi.org/10.9752/TS051.02-2023>>

### Photo Credit

Burt Barnes

USDA is an equal opportunity provider, employer, and lender.

[www.ams.usda.gov/services/transportation-analysis/agrtq](http://www.ams.usda.gov/services/transportation-analysis/agrtq)