



Agricultural Refrigerated Truck Quarterly

a quarterly publication of the Agricultural Marketing Service

CONTENTS

National Summary.....	2	Quarterly Truck Availability.....	8	PNW.....	19
Quarterly Overview	2	Reported U.S. Shipments	10	Arizona	22
U.S. Truck Rates	3	Reported Shipments by Selected		Florida.....	25
Truck Rates for Selected Routes.....	4	Commodities.....	11	Additional Information	28
U.S. Diesel Fuel Prices	5	Regional Markets.....	12	Terms and References.....	28
Relationship Between Diesel Fuel and		U.S.-Mexico Border	12	Contact Us.....	29
Truck Rates.....	6	California.....	16		



NATIONAL SUMMARY

Quarterly Overview

Fruit and Vegetable Shipments

USDA reported fourth-quarter 2021 U.S. truck shipments of fresh produce were 9.04 million tons—5 percent lower than the previous quarter, but unchanged from fourth quarter 2020.

Also, in fourth quarter 2021, shipments from Mexico were 2.74 million tons, higher than those from any other reported origin. Shipments from Mexico accounted for 30 percent of the total reported shipments of fresh fruit and vegetables. Shipments from the next four top regions by volume were as follows: California, 2.14 million tons (24 percent of the total); Pacific Northwest (PNW), 1.64 million tons (18 percent of the total); Arizona, 416,000 tons (5 percent of the total); and finally, Florida, 366,000 tons (4 percent of the total).

These top five commodities accounted for 36 percent of reported truck movements in fourth quarter 2021:

- ▶ Potatoes (13 percent)
- ▶ Apples (9 percent)
- ▶ Onions, dry (6 percent)
- ▶ Oranges (4 percent)
- ▶ Grapes (4 percent)

Truck Rates

The table below provides a snapshot of quarterly truck rates for U.S. produce shipments over four mileage categories—1-500; 501-1,500; 1,501-2,500; and 2,501+ miles. Please note the U.S. average truck rates provided below were calculated using weighted regional rates and volumes.

Average U.S. Truck Rates for Selected Routes Between 501 and 1,500 Miles (\$/Mile)

	0-500 miles	501-1,500 miles	1,501-2,500 miles	2,501+ miles
Q4 2020	3.26	2.92	2.85	1.66
Q1 2021	2.70	2.90	2.57	1.76
Q2 2021	3.13	3.70	2.97	1.92
Q3 2021	3.32	3.21	3.03	1.80
Q4 2021	7.01	3.48	3.34	1.90
Q4 Change from Previous Quarter	111%	8%	10%	6%
Q4 Change from Same Quarter Last Year	115%	19%	17%	15%

Source: AMS Transportation Services Division analysis of AMS Specialty Crops Program Market News data.

Note: Table values may not conform exactly due to rounding.

Note: The rates for 8 long-haul fruit and vegetable truck corridors are included in the national rate, weighted by commodity and origin volume.

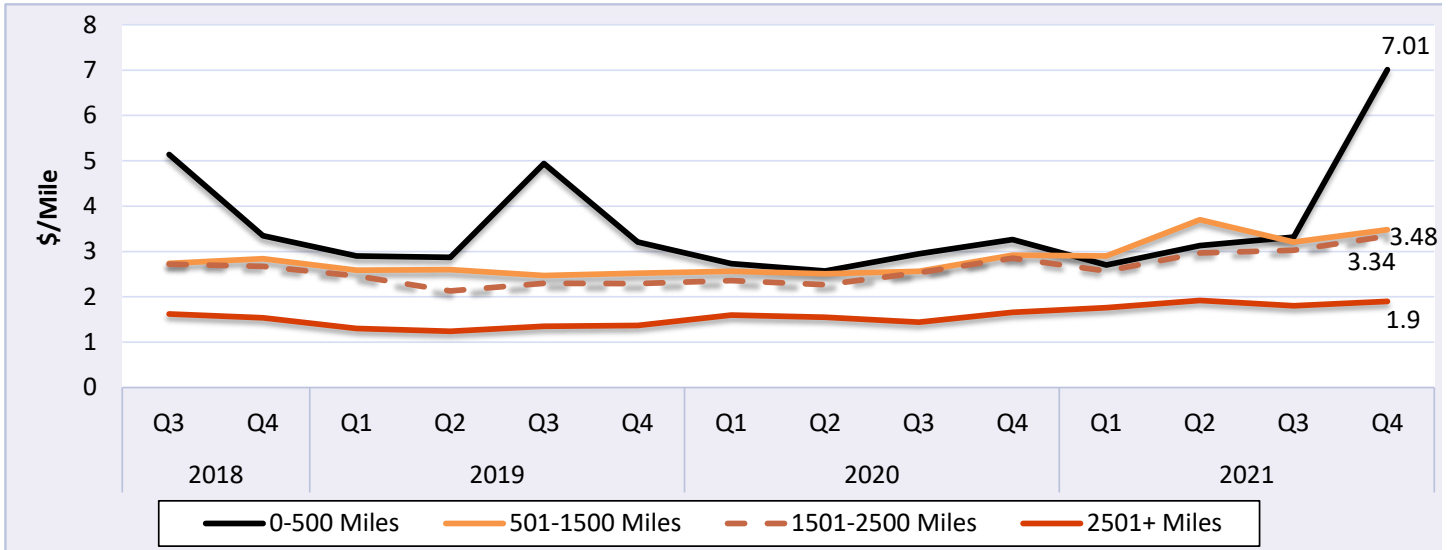
Diesel Fuel

During fourth quarter 2021, the U.S. diesel fuel price averaged \$3.66 per gallon—up 9 percent from the previous quarter and up 48 percent from the same quarter in 2021.



U.S. Truck Rates

Figure 1: Average Truck Rates for Selected Routes (\$/Mile)



Source: AMS Transportation Services Division analysis of AMS Specialty Crops Program Market News data.

Note: The rates for 8 long-haul fruit and vegetable truck corridors are included in the national rates, weighted by commodity and origin volume.

Table 1: Average U.S. Truck Rates for Selected Routes Between 501 and 1,500 Miles (\$/Mile)

Year	1st Quarter	2nd Quarter	3rd Quarter	4th Quarter
2021	2.90	3.70	3.21	3.48
2020	2.56	2.51	2.56	2.92
2019	2.59	2.60	2.47	2.52
2018	2.82	2.99	2.74	2.84
2017	1.86	2.41	2.33	2.56
2016	2.22	2.37	2.49	2.06
2015	2.47	2.63	2.59	2.36
2014	2.32	2.67	2.64	2.49
2013	2.24	2.60	2.62	2.27
2012	2.10	2.54	2.45	2.29
2011	2.02	2.60	2.77	2.26
2010	1.82	2.21	2.33	1.94
2009	1.85	1.99	2.02	1.86

Source: AMS Transportation Services Division analysis of AMS Specialty Crops Program Market News data.

Note: The rates for 8 long-haul fruit and vegetable truck corridors are included in the national rate, weighted by commodity and origin volume.

Note: Table values may not conform exactly due to rounding.



AGRICULTURAL REFRIGERATED TRUCK QUARTERLY

Quarter 4, 2021

Table 2: Quarterly Rates for Key Origins by Month; 501-1,500 miles (\$/Mile)

U.S. Origin	4th Quarter, 2021			3rd Quarter, 2021		
	October	November	December	July	August	September
Arizona	n/a	n/a	5.58	6.09	n/a	n/a
California	5.07	5.37	5.29	4.93	4.67	4.47
Florida	2.59	2.64	3.20	4.21	n/a	n/a
Great Lakes	5.04	5.06	5.07	3.86	4.20	4.81
Mexico-Arizona	3.03	3.30	3.48	2.66	1.59	2.05
Mexico-Texas	3.11	3.40	3.83	3.06	2.77	2.90
New York	3.86	3.86	3.86	4.40	3.86	3.86
Other	2.82	2.86	3.13	3.42	3.16	2.81
PNW	2.92	3.23	3.34	2.49	2.43	2.59
Southeast	6.71	4.49	4.63	4.93	5.05	6.03

Source: AMS Transportation Services Division analysis of AMS Specialty Crops Program Market News data.
 Note: "n/a" indicates rates not available.

Truck Rates for Selected Routes

Table 3: Origin-Destination Truck Rates for Selected Routes, 4th Quarter 2021 (\$/Mile)

U.S. Origin	Atlanta	Baltimore	Boston	Chicago	Dallas	Los Angeles	Miami	New York	Philadelphia	Seattle
Arizona	4.45	4.09	n/a	4.11	5.58	10.57	n/a	3.98	n/a	n/a
California	4.19	4.02	3.89	3.95	5.02	15.52	4.02	4.07	3.96	4.75
Florida	3.65	2.82	2.80	2.32	n/a	n/a	n/a	3.06	2.82	n/a
Great Lakes	4.86	5.49	5.04	5.21	3.63	n/a	3.78	5.63	5.34	n/a
Mexico-Arizona	3.91	3.62	3.72	3.25	4.15	2.48	3.54	3.65	3.65	n/a
Mexico-Texas	3.80	3.49	3.29	3.09	3.65	2.20	3.36	3.55	3.43	2.86
New York	3.75	5.71	15.59	n/a	n/a	n/a	3.97	15.85	9.23	n/a
Other	2.98	3.27	2.92	2.82	4.47	n/a	n/a	3.30	3.30	n/a
PNW	3.64	3.69	3.61	3.52	3.55	3.17	3.39	3.86	3.69	6.88
Southeast	6.25	6.57	6.67	4.12	n/a	0.83	3.90	5.12	10.11	n/a

Source: AMS Transportation Services Division analysis of AMS Specialty Crops Program Market News data.
 Note: "n/a" indicates rates not available.



AGRICULTURAL REFRIGERATED TRUCK QUARTERLY

Quarter 4, 2021

Table 4: Origin-Destination Truck Rates for Selected Routes, 4th Quarter 2021 (\$/Truck)

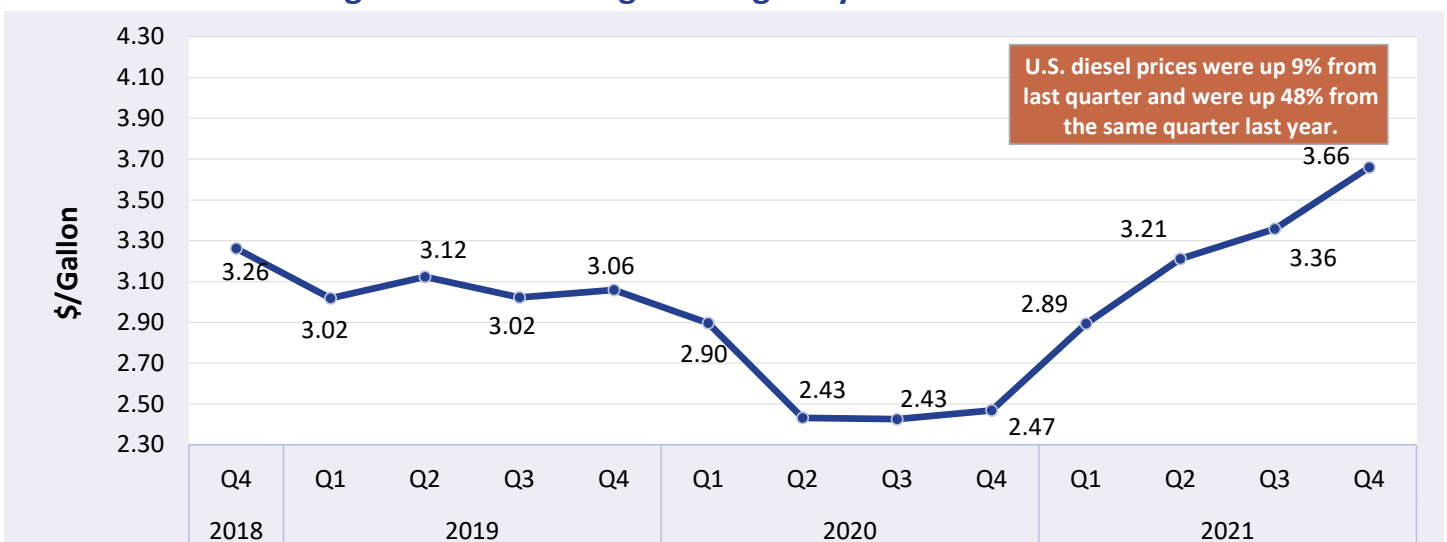
U.S. Origin	Atlanta	Baltimore	Boston	Chicago	Dallas	Los Angeles	Miami	New York	Philadelphia	Seattle
Arizona	9,350	10,629	n/a	8,344	7,250	1,586	n/a	10,738	n/a	n/a
California	9,352	10,904	11,852	8,379	7,441	1,536	11,098	11,356	11,032	6,169
Florida	1,380	2,797	3,906	2,519	n/a	n/a	n/a	3,597	3,088	n/a
Great Lakes	4,239	4,291	6,506	1,721	4,041	n/a	6,641	4,841	4,437	n/a
Mexico-Arizona	7,046	8,517	10,038	5,858	4,067	1,388	8,058	9,133	8,767	n/a
Mexico-Texas	4,369	6,250	7,246	4,415	1,827	3,527	5,138	7,100	6,512	6,854
New York	3,750	1,885	2,650	n/a	n/a	n/a	5,750	2,377	2,123	n/a
Other	2,921	5,850	5,833	2,498	2,481	n/a	n/a	5,863	6,075	n/a
PNW	8,386	9,014	9,895	6,277	6,504	3,156	10,077	9,843	9,227	963
Southeast	2,500	2,169	5,477	3,500	n/a	2,125	3,000	3,403	4,347	n/a

Source: AMS Transportation Services Division analysis of AMS Specialty Crops Program Market News data.
 Note: "n/a" indicates rates not available.

U.S. Diesel Fuel Prices

The diesel fuel price provides a proxy for trends in U.S. truck rates. Diesel fuel is a significant component underlying truck rates.

Figure 2: U.S. Average On-Highway Diesel Fuel Prices



Source: AMS Transportation Services Division analysis of Energy Information Administration/U.S. Department of Energy data.



AGRICULTURAL REFRIGERATED TRUCK QUARTERLY

Quarter 4, 2021

Table 5: Average Diesel Fuel Prices (All Types)

Region	4th Quarter 2021 Price \$/Gallon	Change From Last Quarter	Change From Last Year
East Coast	3.64	10%	44%
California	4.67	9%	42%
New England	3.6	10%	40%
Central Atlantic	3.8	9%	40%
Lower Atlantic	3.55	10%	49%
Gulf Coast	3.4	10%	53%
Midwest	3.56	9%	50%
Rocky Mountain	3.76	4%	53%
West Coast Except California	3.92	8%	48%
U.S.	3.66	9%	48%

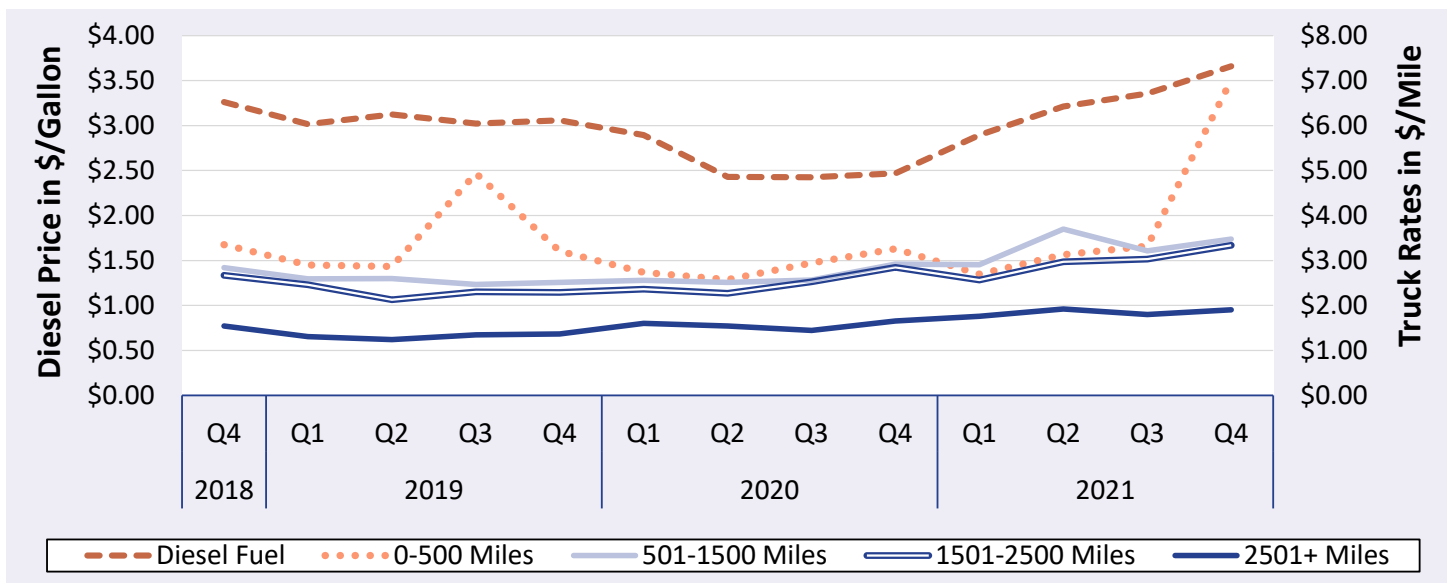
Source: AMS Transportation Services Division analysis of Energy Information Administration/U.S. Department of Energy data.

Note: Table values may not conform exactly due to rounding.

Relationship Between Diesel Fuel and Truck Rates

The diesel fuel price provides a proxy for trends in U.S. truck rates. Diesel fuel is a significant expense for fruit and vegetable movements.

Figure 3: U.S. Average On-Highway Diesel Fuel Prices and Truck Rates



Sources: AMS Transportation Services Division analysis of AMS Specialty Crops Program Market News data and Energy Information Administration/U.S. Department of Energy data.

Note: The rates for 8 long-haul fruit and vegetable truck corridors are included in the national rates, weighted by origin volume.



AGRICULTURAL REFRIGERATED TRUCK QUARTERLY

Quarter 4, 2021

Table 6: Average Diesel Fuel Prices and Truck Rates

Year	Quarter	Diesel Fuel (\$/gallon)	Truck Rates (\$/mile) 501-1500 miles	% Change From			
				Last Quarter		Last Year	
				Diesel	Truck	Diesel	Truck
2018	Q4	3.26	2.84	1%	4%	14%	11%
2019	Q1	3.02	2.59	-8%	-9%	< 1%	-8%
	Q2	3.12	2.60	4%	< 1%	-2%	-13%
	Q3	3.02	2.47	-3%	-5%	-7%	-10%
	Q4	3.06	2.52	1%	2%	-6%	-11%
2020	Q1	2.90	2.56	-5%	2%	-4%	-1%
	Q2	2.43	2.51	-16%	-2%	-22%	-3%
	Q3	2.43	2.56	> -1%	2%	-20%	4%
	Q4	2.47	2.92	2%	14%	-19%	16%
2021	Q1	2.89	2.90	17%	-1%	> -1%	14%
	Q2	3.21	3.70	11%	27%	32%	47%
	Q3	3.36	3.21	5%	-13%	38%	25%
	Q4	3.66	3.48	9%	8%	48%	19%

Sources: AMS Transportation Services Division analysis of AMS Specialty Crops Program Market News data and Energy Information Administration/U.S. Department of Energy data.

Note: Table values may not conform exactly due to rounding.



AGRICULTURAL REFRIGERATED TRUCK QUARTERLY

Quarter 4, 2021

Quarterly Truck Availability

Table 7: U.S. Fresh Fruit and Vegetable Truck Availability

Truck availability legend														
1=Surplus	2=Slight surplus	3=Adequate	4=Slight shortage				5=Shortage							
California, Central, And Western Arizona	Commodities	10/5	10/12	10/19	10/26	11/2	11/9	11/16	11/23	11/30	12/7	12/14	12/21	12/28
Imperial, Palo Verde And Coachella Valleys, California And Central And Western Arizona	Green Leaf Lettuce, Iceberg Lettuce, Red Leaf Lettuce, Romaine Lettuce						4							
Kern District California	Carrots, Grapes	4	4	5	5	4	4	4	5	4	4	4	5	4
Northern California Including San Joaquin Valley	Pears	3	4	4	4									
Oxnard District California	Artichokes, Fresh Cut Cabbage, Celery, Cilantro, Kale Greens, Romaine Lettuce, Parsley										4	4	5	4
Salinas-Watsonville California	Broccoli, Cauliflower, Celery, Boston Lettuce, Green Leaf Lettuce, Iceberg Lettuce, Red Leaf Lettuce, Romaine Lettuce	4	4	5	5	4	4	4	5	4				
San Joaquin Valley California	Grapes, Pomegranates	3	4	4	4	4	4	4	4	4	4	4	5	5
Santa Maria California	Broccoli, Cauliflower, Celery, Iceberg Lettuce, Romaine Lettuce, Green Leaf Lettuce, Red Leaf Lettuce	4	4	5	5	4	4	4	5	4	4	4	5	4
South District California	Avocados, Lemons, Oranges, Grapefruit	5	4	4	4	4	4	4	5	4	4	4	5	4
Great Lakes (MI & WI)	Commodities	10/5	10/12	10/19	10/26	11/2	11/9	11/16	11/23	11/30	12/7	12/14	12/21	12/28
Central Wisconsin	Dry Onions, Potatoes	5	5	5	5	5	5	5	4	3	3	3	3	4
Michigan	Apples, Potatoes, Cucumbers, Squash	4		4	4	4	4	4	4	4	4	4	4	4
Florida	Commodities	10/5	10/12	10/19	10/26	11/2	11/9	11/16	11/23	11/30	12/7	12/14	12/21	12/28
Central & South Florida	Beans, Sweet Corn, Cucumbers, Eggplant, Endive, Escarole, Okra, Bell Peppers, Other Peppers, Radishes, Yellow Squash Straightneck, Zucchini Squash, Strawberries, Cherry Tomatoes, Grape Tomatoes, Plum Tomatoes			3		4	3	3	4	3	3	3	5	5
West District Florida	Tomatoes, Cherry Tomatoes, Grape Tomatoes, Plum Tomatoes	3	3	4		5	4	5						

Source: AMS Transportation Services Division analysis of AMS Specialty Crops Program Market News data.

Note: Empty cells were not reported.



AGRICULTURAL REFRIGERATED TRUCK QUARTERLY

Quarter 4, 2021

Table 7, continued: U.S. Fresh Fruit and Vegetable Truck Availability

Truck availability legend														
1=Surplus	2=Slight surplus	3=Adequate	4=Slight shortage				5=Shortage							
Pacific Northwest (ID, OR, & WA)	Commodities	10/5	10/12	10/19	10/26	11/2	11/9	11/16	11/23	11/30	12/7	12/14	12/21	12/28
Columbia Basin Washington	Dry Onions, Potatoes	5	5	5	5	5	5	5	5	5	5	5	5	5
Idaho And Malheur County, Oregon	Dry Onions	4	4	4	4	4	4	4	4	4	4	4	4	4
Upper Valley, Twin Falls-Burley District Idaho	Potatoes	5	5	5	5	5	5	5	5	5	5	5	5	5
Yakima Valley & Wenatchee District Washington	Apples, Pears	5	5	5	5	5	5	5	5	5	5	5	5	5
U.S.-Mexico border	Commodities	10/5	10/12	10/19	10/26	11/2	11/9	11/16	11/23	11/30	12/7	12/14	12/21	12/28
Nogales, Arizona	Round Green Beans, Sweet Corn, Cucumbers, Eggplant, Grapefruit, Honeydews, Oranges, Squash, Tomatillos, Tomatoes, Cherry Tomatoes, Grape Tomatoes, Plum Tomatoes, Watermelons	3	3	3.89	4.89	4.89	4	5	5	3.89	3.89	4.89	5	5
South Texas	Broccoli, Carrots, Chayote, Cilantro, Cucumbers, Grapefruit, Limes, Mangos, Oranges, Papaya, Anaheim Peppers, Bell Peppers, Habanero Peppers, Jalapeno Peppers, Poblano Peppers, Serrano Peppers, Pineapples, Tomatillos, Tomatoes, Grape Tomatoes, Plum Tomatoes, Watermelons	4	3	4	4	3	4	3	3	4.3	3	3	5	5
Southeast (GA, SC, & NC)	Commodities	10/5	10/12	10/19	10/26	11/2	11/9	11/16	11/23	11/30	12/7	12/14	12/21	12/28
Eastern North Carolina	Sweet Potatoes	5	5	5	5	5	5	5	5	5	4	4	4	5
Georgia	Sweet Potatoes					4	4	4	4	4				

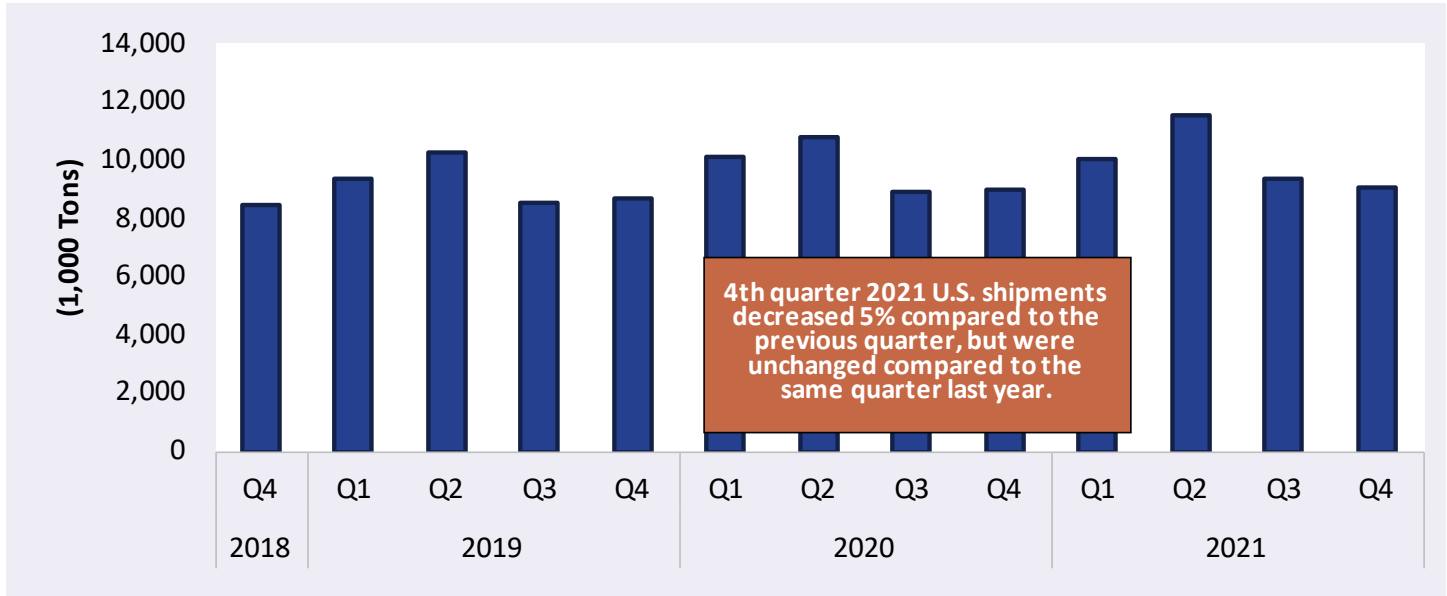
Source: AMS Transportation Services Division analysis of AMS Specialty Crops Program Market News data.

Note: Empty cells were not reported.



Reported U.S. Shipments

Figure 4: Reported U.S. Fruit and Vegetable Shipments (1,000 Tons)



Source: AMS Transportation Services Division analysis of AMS Specialty Crops Program Market News data.

Table 8: Reported U.S. Fruit and Vegetable Shipments (1,000 Tons)

Year	1st Quarter	2nd Quarter	3rd Quarter	4th Quarter	Annual
2021	10,051	11,521	9,501	9,038	40,111
2020	10,081	10,750	9,058	9,007	38,895
2019	9,381	10,246	8,687	8,714	37,028
2018	9,421	10,795	8,789	8,503	37,508
2017	8,072	9,642	8,479	8,267	34,459
2016	8,094	9,761	8,541	8,188	34,583
2015	8,118	9,630	8,324	7,771	33,842
2014	7,733	9,139	8,080	7,725	32,677
2013	7,451	8,972	7,762	7,527	31,712
2012	7,577	9,008	7,774	7,532	31,890
2011	7,007	8,981	7,887	7,988	31,863
2010	7,065	8,881	7,985	7,522	31,454
2009	7,158	8,728	7,990	7,270	31,147
2008	7,059	8,666	7,426	6,904	30,057
2007	6,959	8,585	7,475	7,099	30,118
2006	6,335	8,400	7,854	6,960	29,550
2005	6,877	8,324	7,737	7,387	30,325

Source: AMS Transportation Services Division analysis of AMS Specialty Crops Program Market News data.

Note: Table values may not conform exactly due to rounding.



Reported Shipments by Selected Commodities

Table 9: Reported Top 10 Commodity Shipments (1,000 Tons)

Commodity	4th Quarter 2021	Previous Quarter	Same Quarter Last Year	Current Quarter as % change from:	
				Previous Qtr	Same Qtr Last Year
Potatoes	1,157	1,073	1,166	8%	-1%
Apples	822	614	882	34%	-7%
Onions Dry	507	677	582	-25%	-13%
Oranges	377	221	447	71%	-16%
Grapes	352	411	361	-14%	-3%
Cucumbers	335	450	532	-26%	-37%
Tomatoes	332	478	607	-31%	-45%
Avocados	307	498	658	-38%	-53%
Lettuce, Iceberg	298	353	325	-15%	-8%
Tomatoes, Plum Type	296	476	370	-38%	-20%

Source: AMS Transportation Services Division analysis of AMS Specialty Crops Program Market News data.

Note: Table values may not conform exactly due to rounding.

Table 10: Reported Top 10 Regions (1,000 Tons)

Origin	4th Quarter 2021 Volume	% Change from Last Quarter	% Change From Same Quarter Last Year
Mexico	2744	24%	3%
California	2143	-33%	-8%
PNW	1640	11%	-11%
Canada	497	-4%	176%
Arizona	416	916%	7%
Florida	366	1,574%	20%
Great Lakes	276	-15%	-3%
Colorado	249	56%	0%
Southeast	172	-59%	-4%
New York	148	59%	5%

Source: AMS Transportation Services Division analysis of AMS Specialty Crops Program Market News data.

Note: Table values may not conform exactly due to rounding.



REGIONAL MARKETS

U.S.-Mexico Border

Volume

In fourth quarter 2021, USDA reported total shipments of fruits and vegetables from Mexico were 2.74 million tons—a 3-percent increase from fourth quarter 2020 (year to year). The sum of the top five commodities shipped from the U.S.-Mexico border also increased 14 percent year to year. Four of top five commodities saw year-to-year increases, including tomatoes, plum type (up 47 percent); watermelon, seedless (up 30 percent); peppers, other (up 12 percent); and cucumbers (up 8 percent). Shipments of avocados decreased by 6 percent.

Rates

In fourth quarter 2021, truck rates for shipments between 501 miles and 1,500 miles from the Arizona-Mexico border crossings averaged \$3.28 per mile. This was up 56 percent from third quarter 2021 to fourth quarter 2021 (quarter to quarter) and up 17 percent year to year. Rates for shipments between 501 miles and 1,500 miles from the Texas-Mexico border crossings averaged \$3.44 per mile—up 19 percent quarter to quarter and up 20 percent year to year.

Truck Overview

Diesel fuel prices for border crossings from Arizona averaged \$3.92 per gallon—an 8-percent increase from quarter to quarter and a 48-percent increase from year to year. Diesel fuel prices for border crossings from Texas averaged \$3.40 per gallon—up 10 percent quarter to quarter and up 53 percent year to year. Mexico crossings through Nogales, AZ, reported a slight shortage of trucks in October and shortages in November and December. Mexico crossings through the South Texas district reported slight shortages in October and December and adequate availability in November.

Table 11: Reported Top Five Commodities Shipped from Mexico (1,000 tons)

Commodity	4th Quarter 2021	Share of Mexico-Total Total	Previous Quarter	Same Quarter Last Year	Current Quarter as % change from:	
					Previous Qtr	Same Qtr Last Year
Avocados	302	11%	221	319	37%	-6%
Cucumbers	256	9%	156	237	64%	8%
Tomatoes, Plum Type	248	9%	216	168	14%	47%
Peppers, Other	190	7%	128	169	48%	12%
Watermelons, Seedless	173	6%	56	133	207%	30%
Top 5 Total	1,167	43%	777	1,026	50%	14%
Mexico Total	2,744	100%	2,209	2,673	24%	3%

Source: AMS Transportation Services Division analysis of AMS Specialty Crops Program Market News data.

Any "-" in the table indicates no reported shipments during the quarter or a percentage change with an at- or near-zero denominator.

Note: Table values may not conform exactly due to rounding.



AGRICULTURAL REFRIGERATED TRUCK QUARTERLY

Quarter 4, 2021

Table 12: Top 5 Commodities Shipped to U.S. from Mexico by State of Entry (1,000 tons)

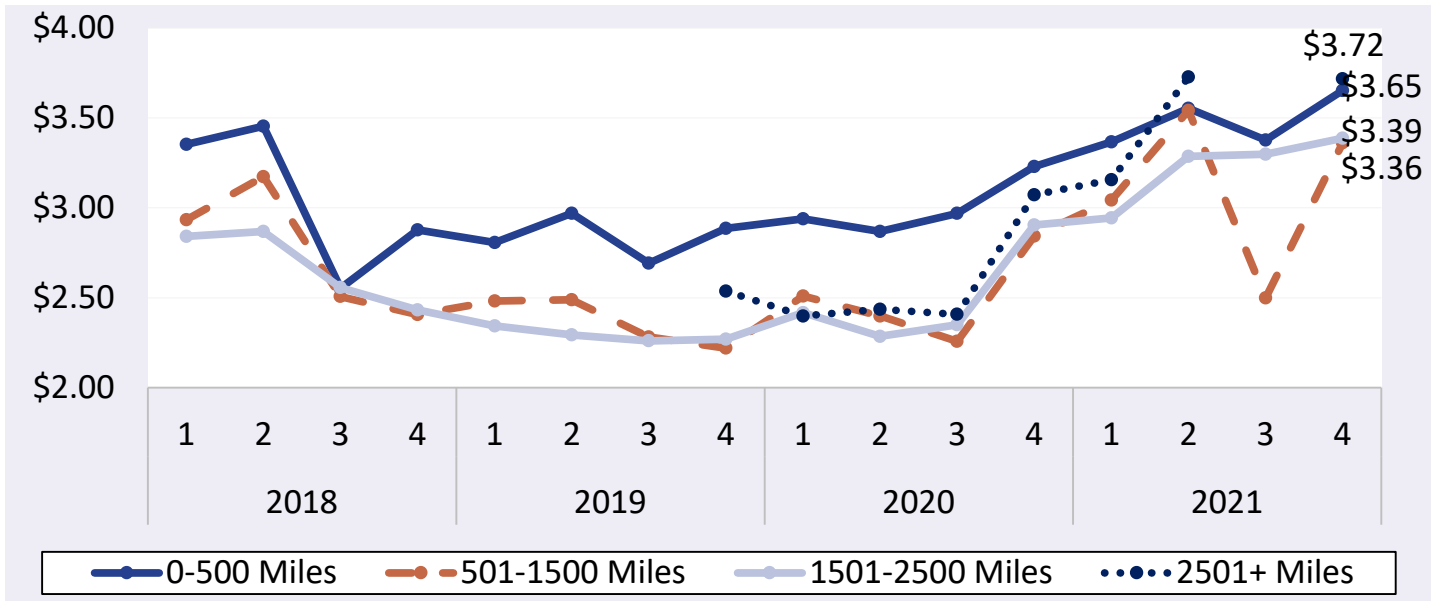
Texas		California		Arizona		New Mexico	
Commodity	4th Quarter 2021	Commodity	4th Quarter 2021	Commodity	4th Quarter 2021	Commodity	4th Quarter 2021
Avocados	295	Tomatoes, Plum Type	74	Cucumbers	139	Peppers, Other	94
Tomatoes, Plum Type	143	Onions Green	42	Squash	130	Pumpkins	< 1
Limes	142	Misc Tropical	37	Watermelons, Seedless	115		
Tomatoes	108	Asparagus	36	Peppers, Bell Type	53		
Cucumbers	83	Cucumbers	33	Tomatoes, Plum Type	30		
Mexico through TX Total	1,512	Mexico through CA Total	436	Mexico through AZ Total	702	Mexico through NM Total	94

Source: AMS Transportation Services Division analysis of AMS Specialty Crops Program Market News data.

Any "-" in the table indicates no reported shipments during the quarter.

Note: Table values may not conform exactly due to rounding.

Figure 5: Truck Rates from U.S.-Mexico Border (\$/Mile by Distance Traveled)



Source: AMS Transportation Services Division analysis of AMS Specialty Crops Program Market News data.

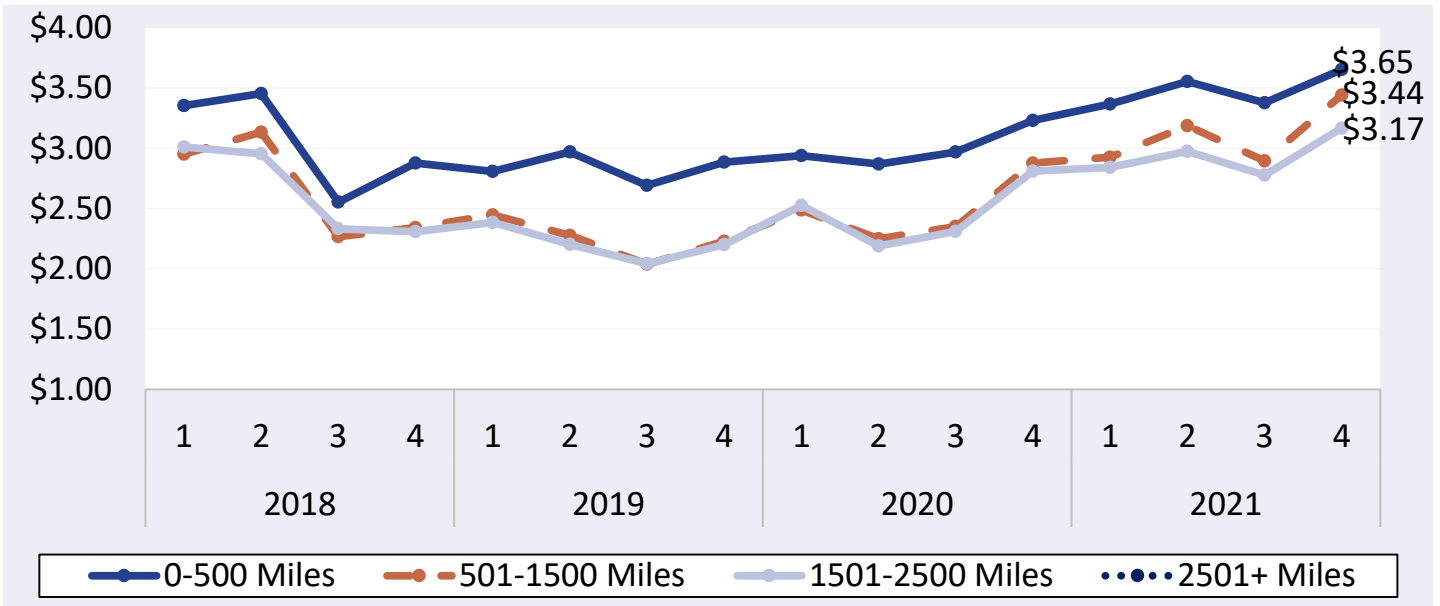
Any gaps in the chart lines are the result of quarters with no reported data for the region.



AGRICULTURAL REFRIGERATED TRUCK QUARTERLY

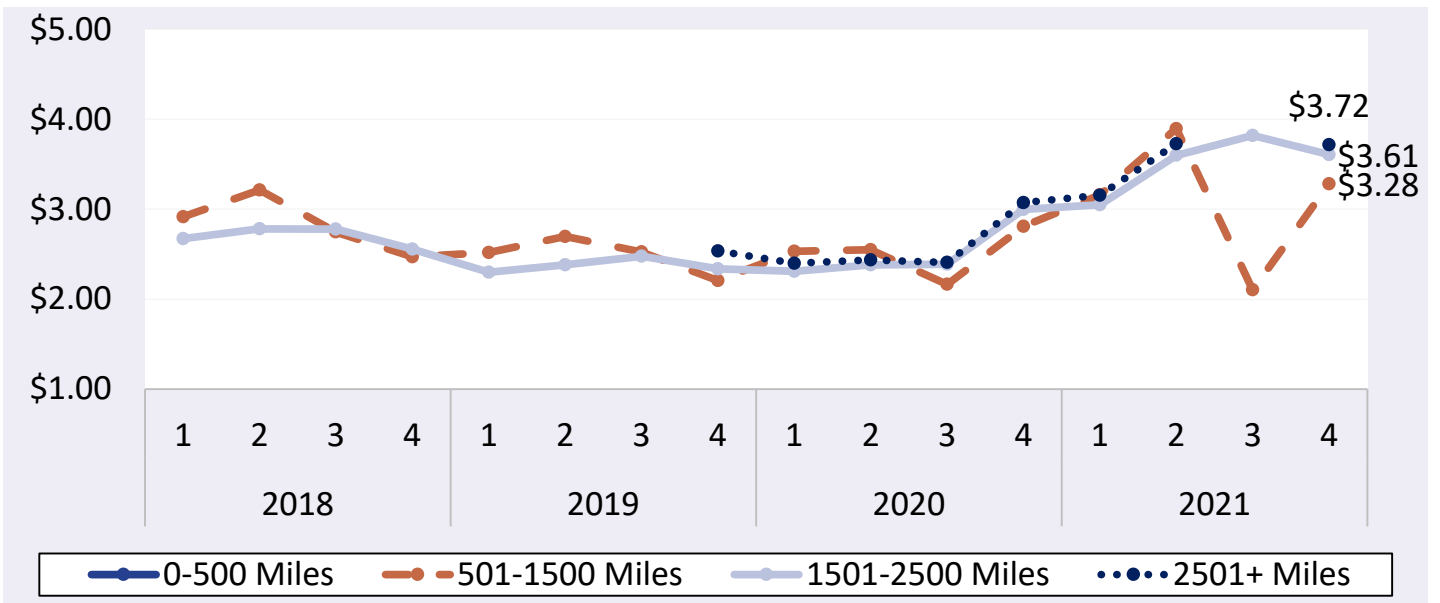
Quarter 4, 2021

Figure 6: Texas Truck Rates from U.S.-Mexico Border (\$/Mile by Distance Traveled)



Source: AMS Transportation Services Division analysis of AMS Specialty Crops Program Market News data. Any gaps in the chart lines are the result of quarters with no reported data for the region.

Figure 7: Arizona Truck Rates from U.S.-Mexico Border (\$/Mile by Distance Traveled)



Source: AMS Transportation Services Division analysis of AMS Specialty Crops Program Market News data. Any gaps in the chart lines are the result of quarters with no reported data for the region.



AGRICULTURAL REFRIGERATED TRUCK QUARTERLY

Quarter 4, 2021

Table 13: Truck Overview from the U.S.-Mexico Border

Region/Reporting District	October	November	December	4th Quarter
Mexico Crossings Through Nogales, Arizona	3.89	4.56	4.69	4.38
Mexico Crossings Through South Texas	3.75	3.46	4	3.74
Regional Average Availability	3.82	4.01	4.35	4.06
Diesel Fuel Price (\$/gallon), through Texas	3.36	3.47	3.36	3.40
Diesel Fuel Price (\$/gallon), through Arizona	3.81	3.99	3.96	3.92

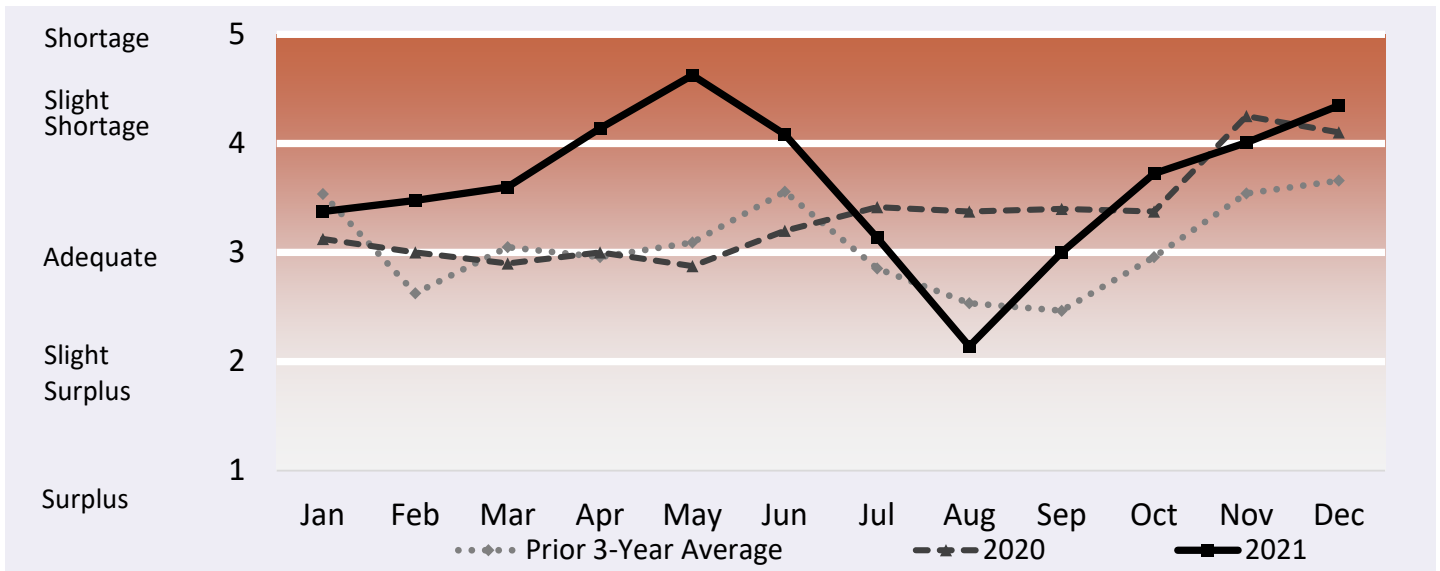
Source: AMS Transportation Services Division analysis of AMS Specialty Crops Program Market News data.

Any "-" in the table indicates no reported shipments during the quarter.

Note: Table values may not conform exactly due to rounding.

Note: AMS Specialty Crops Program defines regions by commodity, which may overlap in truck availability reporting.

Figure 8: Refrigerated Truck Availability Monthly Ratings from the U.S-Mexico Border



Source: AMS Transportation Services Division analysis of AMS Specialty Crops Program Market News data.

Any gaps in the chart lines are the result of quarters with no reported data for the region.



California

Volume

Total reported shipments of fruits and vegetables from California in fourth quarter 2021 were 2.14 million tons, down 8 percent year to year. The top five commodities shipped from California decreased 10 percent from year to year. Four of the top 5 commodities saw year-to-year decreases in the fourth quarter, including clementines (down 24 percent); celery (down 15 percent); oranges (down 11 percent); and grapes (down 3 percent). Shipments of lemons increased by 3 percent.

Rates

The quarterly average truck rate for shipments between 501 miles and 1,500 miles was \$5.26 per mile—an 11-percent increase quarter to quarter and a 36-percent increase year to year.

Truck Overview

Diesel fuel prices averaged \$4.67 per gallon—a 9-percent increase quarter to quarter and a 42-percent increase year to year. Throughout the quarter, monthly average truck availability was reported as a slight shortage for all California districts, except for a few districts that did not report in October, November, and December.

Table 14: Reported Top Five Commodities Shipped from California (1,000 tons)

Commodity	4th Quarter 2021	Share of California Total	Previous Quarter	Same Quarter Last Year	Current Quarter as % change from:	
					Previous Qtr	Same Qtr Last Year
Grapes	352	16%	396	361	-11%	-3%
Oranges	330	15%	212	369	56%	-11%
Celery	198	9%	158	233	25%	-15%
Lemons	185	9%	75	179	146%	3%
Clementines	182	9%	-	240	-	-24%
Top 5 Total	1,247	58%	840	1,383	48%	-10%
California Total	2,143	100%	3,178	2,339	-33%	-8%

Source: AMS Transportation Services Division analysis of AMS Specialty Crops Program Market News data.

Any "-" in the table indicates no reported shipments during the quarter or a percentage change with an at- or near-zero denominator.

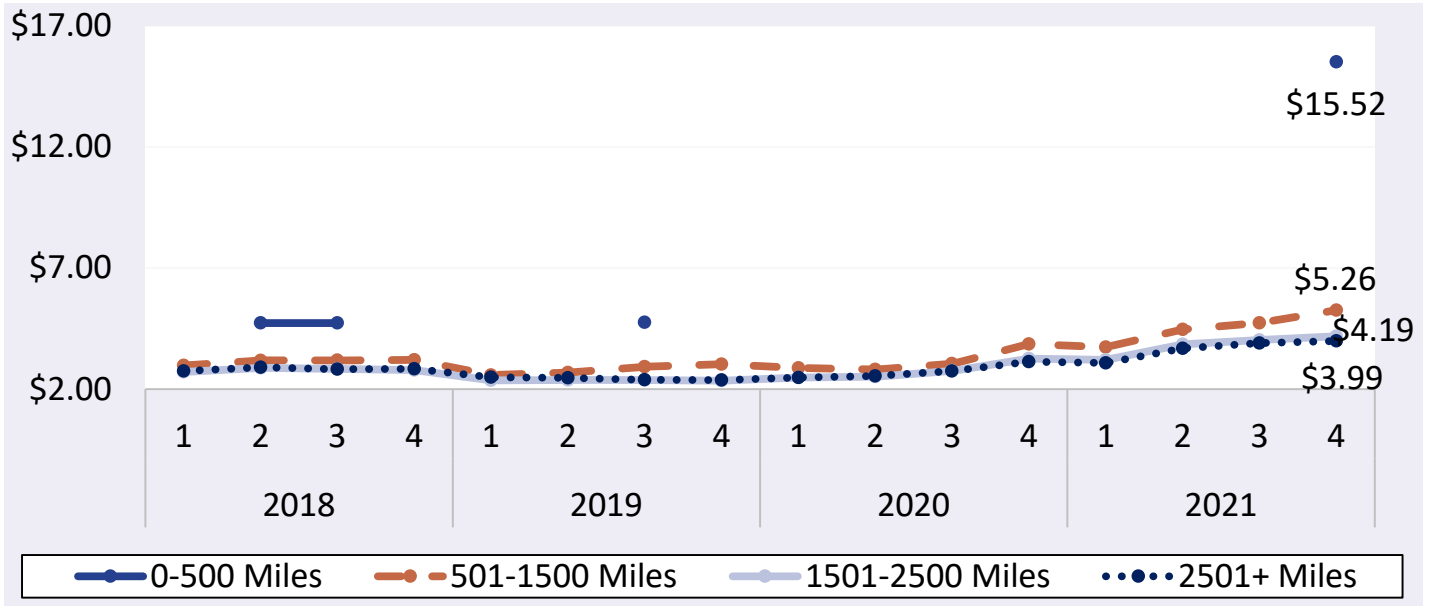
Note: Table values may not conform exactly due to rounding.



AGRICULTURAL REFRIGERATED TRUCK QUARTERLY

Quarter 4, 2021

Figure 9: California Truck Rates (\$/Mile by Distance Travelled)



Source: AMS Transportation Services Division analysis of AMS Specialty Crops Program Market News data.
Any gaps in the chart lines are the result of quarters with no reported data for the region.

Table 15: California Truck Overview (Availability Rating: 1=Surplus to 5=Shortage)

Region/Reporting District	October	November	December	4th Quarter
Imperial, Palo Verde And Coachella Valleys, California And Central And Western Arizona	-	4	-	4
Kern District California	4.42	4.19	4.25	4.28
Northern California Including San Joaquin Valley	3.75	-	-	3.75
Oxnard District California	-	-	4.25	4.25
Salinas-Watsonville California	4.39	4.19	-	4.29
San Joaquin Valley California	3.75	4	4.5	4.08
Santa Maria California	4.43	4.19	4.25	4.29
South District California	4.25	4.2	4.25	4.23
Regional Average Availability	4.16	4.13	4.3	4.20
Diesel Fuel Price (\$/gallon)	4.48	4.75	4.78	4.67

Source: AMS Transportation Services Division analysis of AMS Specialty Crops Program Market News data.

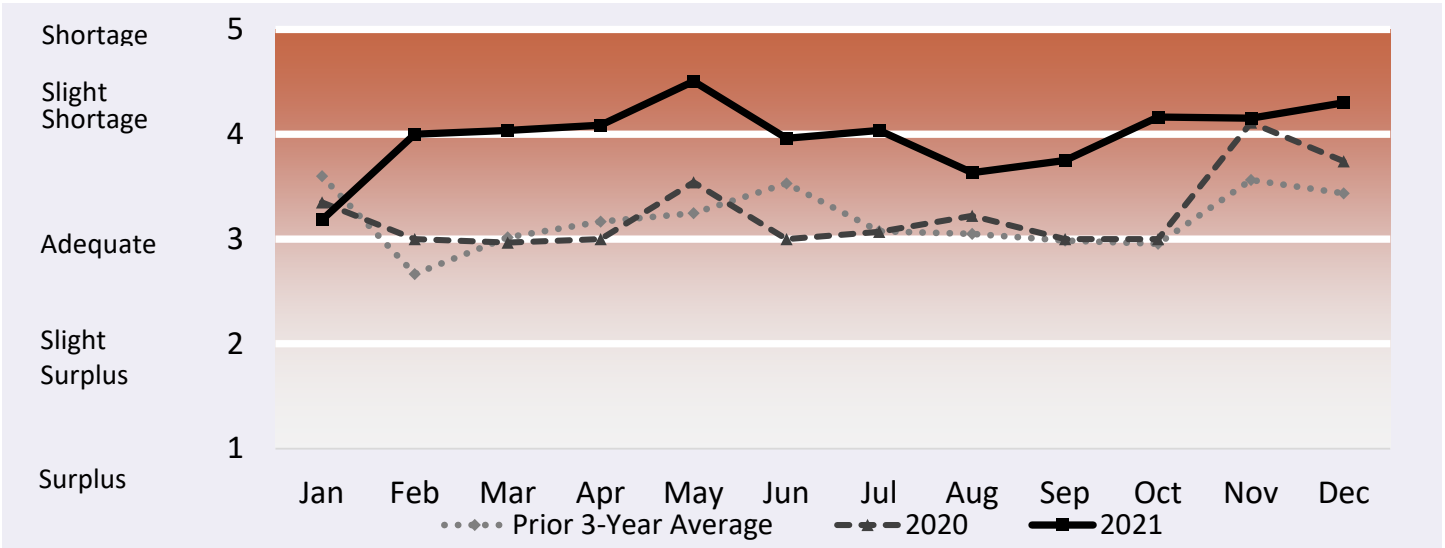
Any "-" in the table indicates no reported shipments during the quarter.

Note: Table values may not conform exactly due to rounding.

Note: AMS Specialty Crops Program defines regions by commodity, which may overlap in truck availability reporting.



Figure 10: Refrigerated Truck Availability Monthly Ratings for California



Source: AMS Transportation Services Division analysis of AMS Specialty Crops Program Market News data.
 Any gaps in the chart lines are the result of quarters with no reported data for the region.



AGRICULTURAL REFRIGERATED TRUCK QUARTERLY

Quarter 4, 2021

PNW

Volume

During fourth quarter 2021, total reported shipments of fruits and vegetables from PNW were 1.64 million tons, decreasing 11 percent year to year. The sum of the top five commodities shipped from PNW also decreased 11 percent year to year. Except for pears (3-percent increase); the rest of the top five commodities saw year-to-year decreases: blueberries (down 43 percent); onions, dry (down 20 percent) potatoes (down 15 percent); and apples (down 5 percent).

Rates

The quarterly average truck rate for shipments between 501 miles and 1,500 miles was \$3.17 per mile, increasing 26 percent quarter to quarter and rising 34 percent year to year.

Truck Overview

Diesel fuel prices averaged \$3.92 per gallon—an 8-percent increase quarter to quarter and a 48-percent increase year to year. Monthly average truck availability was reported as a shortage for each district throughout the quarter, except for the district composed of Idaho and Malheur County, OR. This district reported a slight shortage throughout the quarter.

Table 16: Reported Top Five Commodities Shipped from PNW (1,000 tons)

Commodity	4th Quarter 2021	Share of PNW Total	Previous Quarter	Same Quarter Last Year	Current Quarter as % change from:	
					Previous Qtr	Same Qtr Last Year
Apples	676	41%	566	714	19%	-5%
Potatoes	447	27%	483	527	-7%	-15%
Onions Dry	357	22%	236	445	52%	-20%
Pears	159	10%	41	154	287%	3%
Blueberries	< 1	< 1%	35	< 1	-99%	-43%
Top 5 Total	1,640	100%	1,361	1,839	20%	-11%
PNW Total	1,640	100%	1,476	1,841	11%	-11%

Source: AMS Transportation Services Division analysis of AMS Specialty Crops Program Market News data.

Any "-" in the table indicates no reported shipments during the quarter or a percentage change with an at- or near-zero denominator.

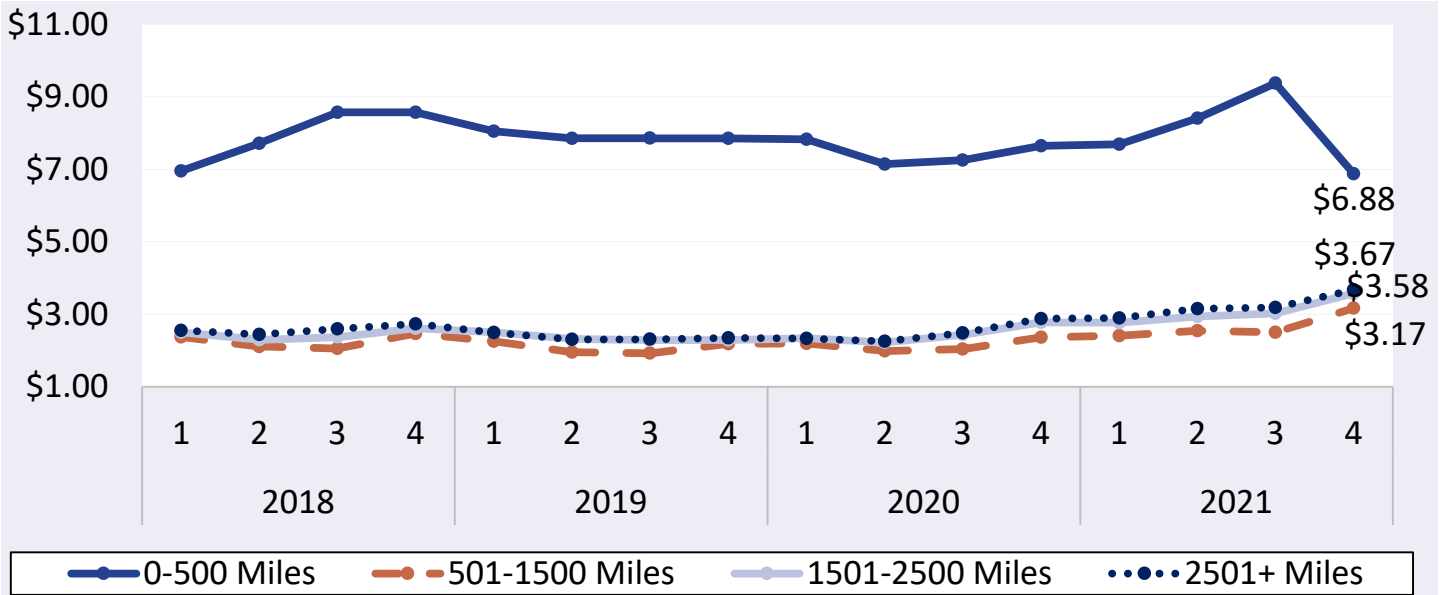
Note: Table values may not conform exactly due to rounding.



AGRICULTURAL REFRIGERATED TRUCK QUARTERLY

Quarter 4, 2021

Figure 11: PNW Truck Rates (\$/Mile by Distance Travelled)



Source: AMS Transportation Services Division analysis of AMS Specialty Crops Program Market News data.
Any gaps in the chart lines are the result of quarters with no reported data for the region.

Table 17: PNW Truck Overview (Availability Rating: 1=Surplus to 5=Shortage)

Region/Reporting District	October	November	December	4th Quarter
Columbia Basin Washington	5	5	5	5
Idaho And Malheur County, Oregon	4	4.36	4.44	4.27
Upper Valley, Twin Falls-Burley District Idaho	5	5	5	5
Yakima Valley & Wenatchee District Washington	5	5	5	5
Regional Average Availability	4.75	4.84	4.86	4.82
Diesel Fuel Price (\$/gallon)	3.81	3.99	3.96	3.92

Source: AMS Transportation Services Division analysis of AMS Specialty Crops Program Market News data.

Any "-" in the table indicates no reported shipments during the quarter.

Note: Table values may not conform exactly due to rounding.

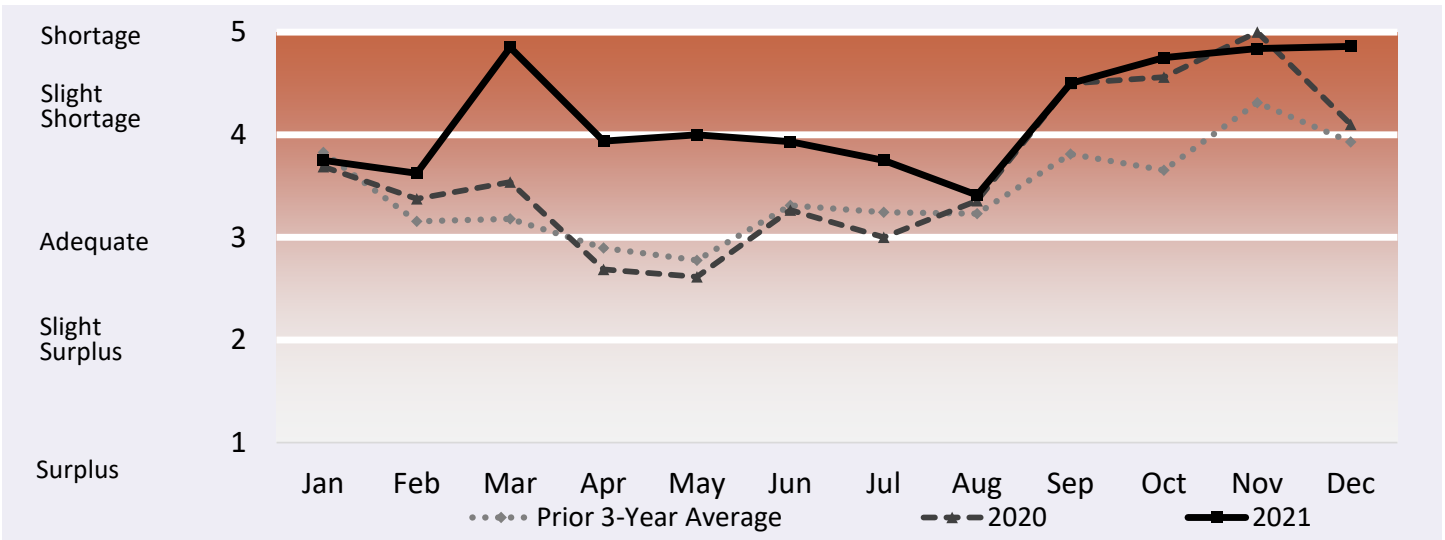
Note: AMS Specialty Crops Program defines regions by commodity, which may overlap in truck availability reporting.



AGRICULTURAL REFRIGERATED TRUCK QUARTERLY

Quarter 4, 2021

Figure 12: Refrigerated Truck Availability Monthly Ratings for PNW



Source: AMS Transportation Services Division analysis of AMS Specialty Crops Program Market News data. Any gaps in the chart lines are the result of quarters with no reported data for the region.



Arizona

Volume

During fourth quarter 2021, total reported shipments of fruits and vegetables from Arizona were 416,000 tons, up 7 percent year to year. The sum of the top five commodities shipped from Arizona also increased by 1 percent year to year. Three of the top five commodities saw year-to-year increases, including broccoli (up 49 percent); lettuce, iceberg (up 18 percent); and lettuce, romaine (up 6 percent). Shipments of cantaloupes decreased 40 percent, and shipments of lettuce, processed, fell 17 percent.

Rates

The quarterly average truck rate for shipments between 501 miles and 1,500 miles was \$5.58 per mile—down 8 percent quarter to quarter and up 36 percent year to year.

Truck Overview

Diesel fuel prices averaged \$3.92 per gallon—up 8 percent quarter to quarter and up 48 percent year to year. The Imperial County, Palo Verde, and Coachella Valley, CA, regions as well as the Central and Western Arizona regions, reported a slight truck shortage in November while no data were reported in October and December.

Table 18: Reported Top Five Commodities Shipped from Arizona (1,000 tons)

Commodity	4th Quarter 2021	Share of Arizona Total	Previous Quarter	Same Quarter Last Year	Current Quarter as % change from:	
					Previous Qtr	Same Qtr Last Year
Lettuce, Iceberg	122	29%	< 1	103	-	18%
Lettuce, Romaine	111	27%	-	105	-	6%
Lettuce, Processed	54	13%	-	65	-	-17%
Cantaloupe	25	6%	13	42	94%	-40%
Broccoli	20	5%	-	13	-	49%
Top 5 Total	333	80%	13	329	2,436%	1%
Arizona Total	416	100%	41	388	916%	7%

Source: AMS Transportation Services Division analysis of AMS Specialty Crops Program Market News data.

Any "-" in the table indicates no reported shipments during the quarter or a percentage change with an at- or near-zero denominator.

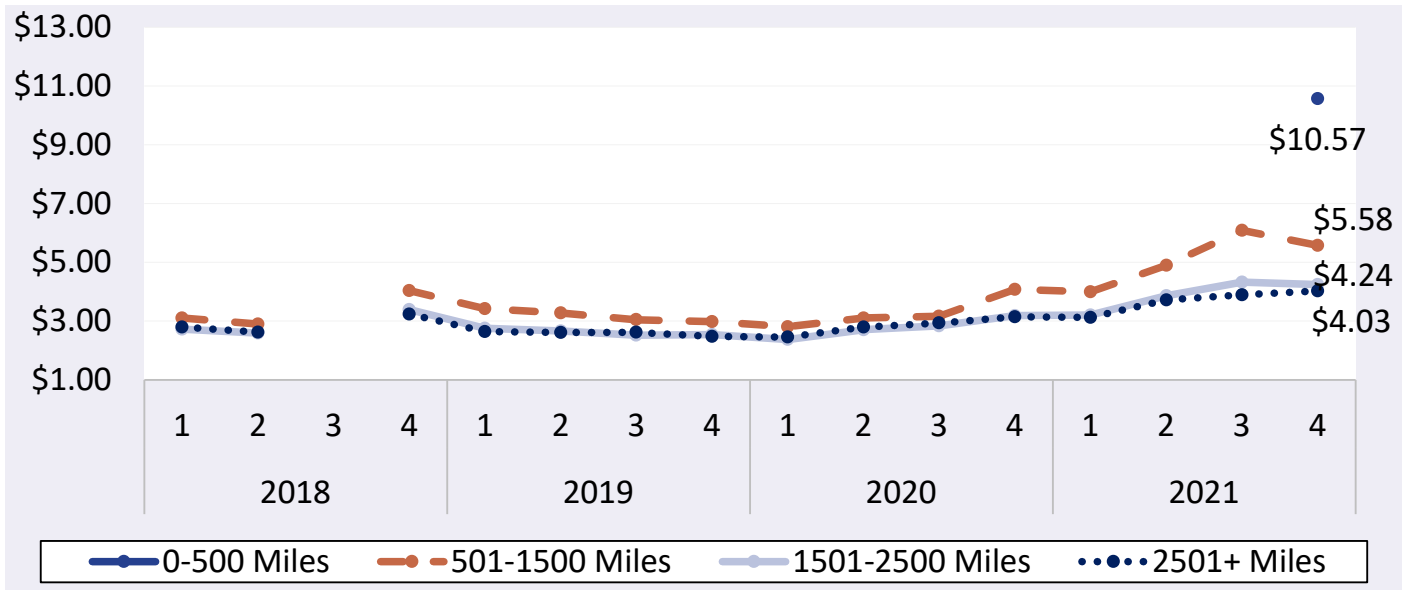
Note: Table values may not conform exactly due to rounding.



AGRICULTURAL REFRIGERATED TRUCK QUARTERLY

Quarter 4, 2021

Figure 13: Arizona Truck Rates (\$/Mile by Distance Travelled)



Source: AMS Transportation Services Division analysis of AMS Specialty Crops Program Market News data. Any gaps in the chart lines are the result of quarters with no reported data for the region.

Table 19: Arizona Truck Overview (Availability Rating: 1=Surplus to 5=Shortage)

Region/Reporting District	October	November	December	4th Quarter
Imperial, Palo Verde And Coachella Valleys, California And Central And Western Arizona	-	4	-	4
Regional Average Availability	-	4	-	4
Diesel Fuel Price (\$/gallon)	3.81	3.99	3.96	3.92

Source: AMS Transportation Services Division analysis of AMS Specialty Crops Program Market News data.

Any "-" in the table indicates no reported shipments during the quarter.

Note: Table values may not conform exactly due to rounding.

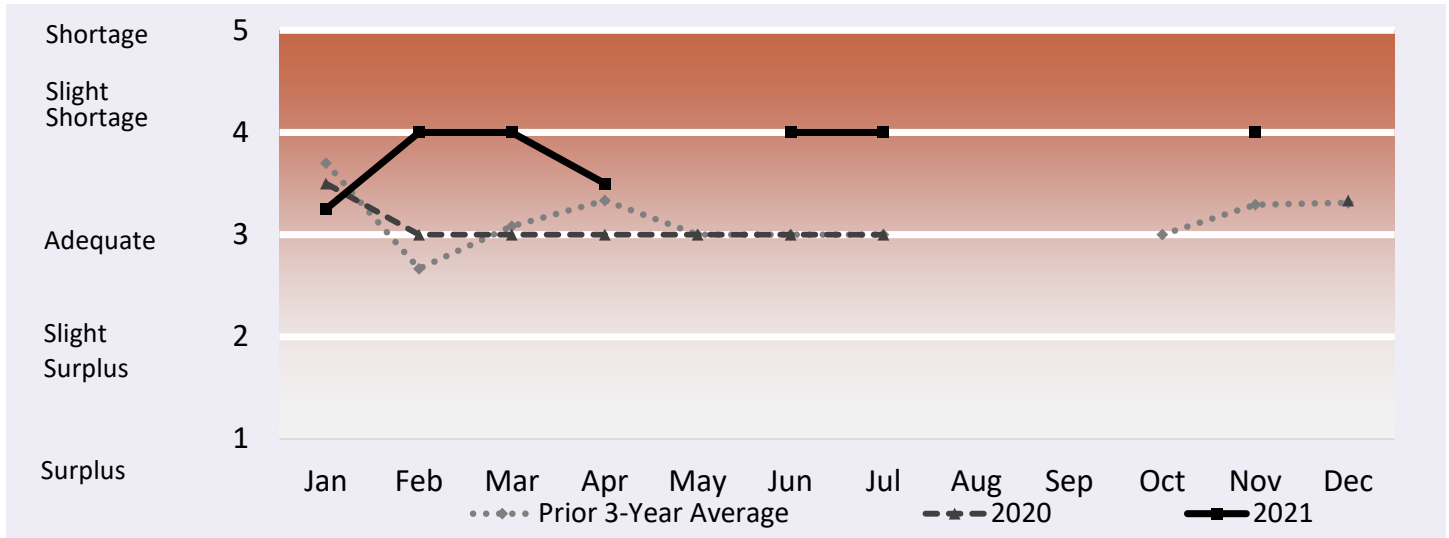
Note: AMS Specialty Crops Program defines regions by commodity, which may overlap in truck availability reporting.



AGRICULTURAL REFRIGERATED TRUCK QUARTERLY

Quarter 4, 2021

Figure 14: Refrigerated Truck Availability Monthly Ratings for Arizona



Source: AMS Transportation Services Division analysis of AMS Specialty Crops Program Market News data.
Any gaps in the chart lines are the result of quarters with no reported data for the region.



Florida

Volume

Total reported shipments of fruits and vegetables from Florida in fourth quarter 2021 were 366,000 tons, up 20 percent year to year. The sum of the top five commodities shipped from Florida increased 12 percent year to year. Three of the top five commodities increased year to year: tomatoes, plum type (up 47 percent); cucumbers (up 28 percent); and tomatoes (up 26 percent). Shipments of grapefruit decreased by 20 percent, and shipments of oranges fell 16 percent.

Rates

The quarterly average truck rate for shipments between 501 miles and 1,500 miles was \$2.78 per mile—down 34 percent quarter to quarter and up 17 percent year to year.

Truck Overview

Diesel fuel prices averaged \$3.55 per gallon—up 10 percent quarter to quarter and up 49 percent year to year. The Central and South Florida district reported adequate truck availability in October and November and a slight shortage in December. The West Florida district reported adequate availability in October and a shortage in November. The district did not report in December.

Table 20: Reported Top Five Commodities Shipped from Florida (1,000 tons)

Commodity	4th Quarter 2021	Share of Florida Total	Previous Quarter	Same Quarter Last Year	Current Quarter as % change from:	
					Previous Qtr	Same Qtr Last Year
Tomatoes	104	28%	2	83	4,167%	26%
Tomatoes, Plum Type	36	10%	1	25	-	47%
Oranges	33	9%	2	39	2,007%	-16%
Grapefruit	29	8%	-	36	-	-20%
Cucumbers	23	6%	1	18	-	28%
Top 5 Total	225	62%	5	201	4,092%	12%
Florida Total	366	100%	22	305	1,574%	20%

Source: AMS Transportation Services Division analysis of AMS Specialty Crops Program Market News data.

Any "-" in the table indicates no reported shipments during the quarter or a percentage change with an at- or near-zero denominator.

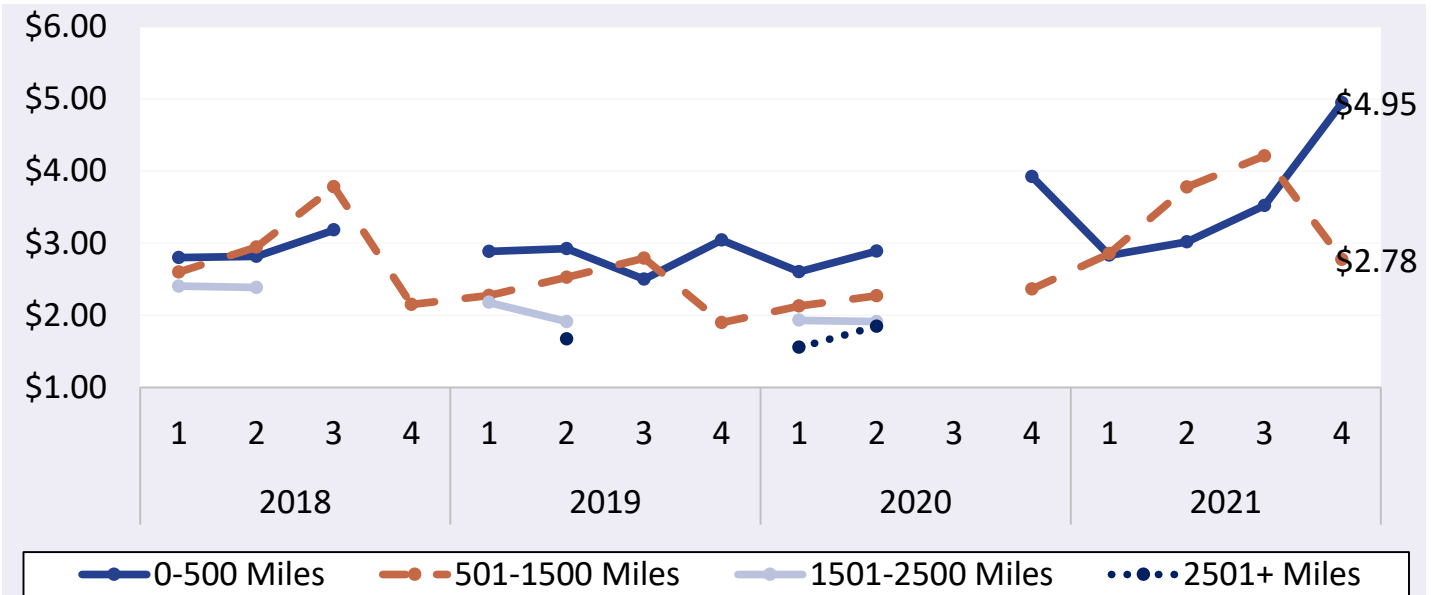
Note: Table values may not conform exactly due to rounding.



AGRICULTURAL REFRIGERATED TRUCK QUARTERLY

Quarter 4, 2021

Figure 15: Florida Truck Rates (\$/Mile by Distance Travelled)



Source: AMS Transportation Services Division analysis of AMS Specialty Crops Program Market News data.
Any gaps in the chart lines are the result of quarters with no reported data for the region.

Table 21: Florida Truck Overview (Availability Rating: 1=Surplus to 5=Shortage)

Region/Reporting District	October	November	December	4th Quarter
Central & South Florida	3	3.4	4	3.47
West District Florida	3.33	4.67	-	4
Regional Average Availability	3.17	4.03	4	3.73
Diesel Fuel Price (\$/gallon)	3.51	3.61	3.52	3.55

Source: AMS Transportation Services Division analysis of AMS Specialty Crops Program Market News data.

Any "-" in the table indicates no reported shipments during the quarter.

Note: Table values may not conform exactly due to rounding.

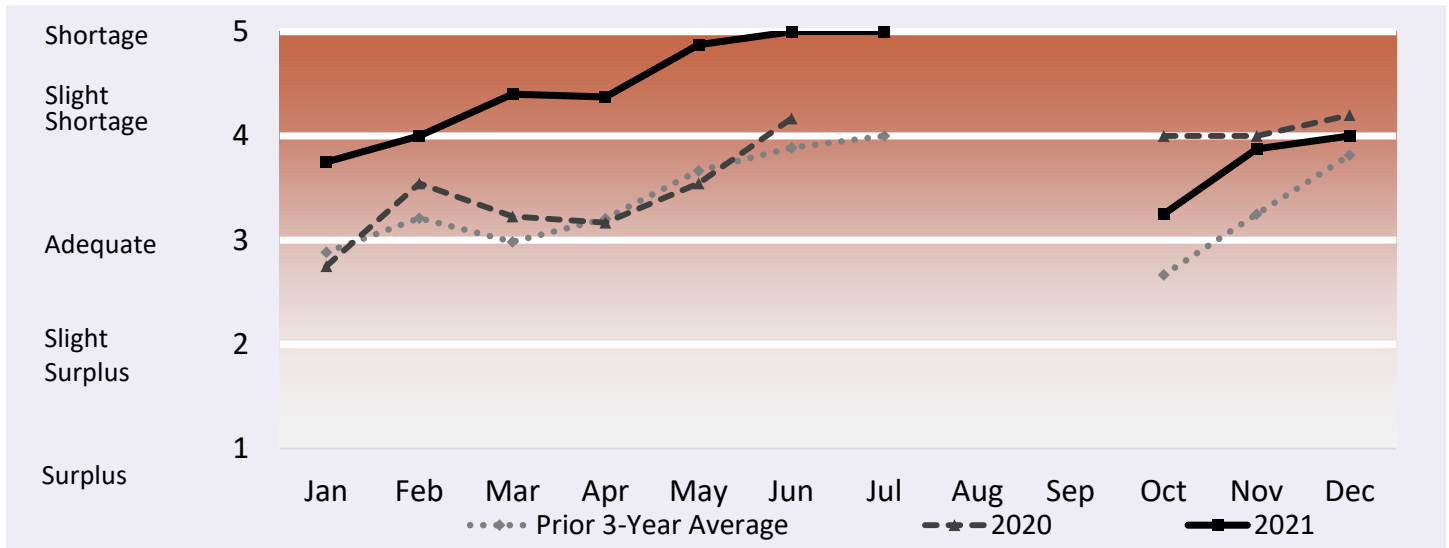
Note: AMS Specialty Crops Program defines regions by commodity, which may overlap in truck availability reporting.



AGRICULTURAL REFRIGERATED TRUCK QUARTERLY

Quarter 4, 2021

Figure 16: Refrigerated Truck Availability Monthly Ratings for Florida



Source: AMS Transportation Services Division analysis of AMS Specialty Crops Program Market News data. Any gaps in the chart lines are the result of quarters with no reported data for the region.



ADDITIONAL INFORMATION

Terms and References

Data Reporting and Publication Window

The publication date of each Agricultural Refrigerated Truck Quarterly (AgRTQ) depends on the timing of data reporting. Reporting of truck shipments in some regions can be delayed 2-3 months past their respective quarter. We publish the AgRTQ one month after that lag in order to capture a more complete picture of truck shipments during the quarter.

Data Sources

This information is compiled from the weekly Specialty Crops Truck Rate Report by USDA, Agricultural Marketing Service (AMS), Specialty Crops Program, Market News Division. The website is:

<https://www.marketnews.usda.gov/mnp/fv-home>.

Regional Markets

For the regional markets, some States are grouped into producing regions. The Pacific Northwest region includes Idaho, Oregon, and Washington. The Great Lakes region includes Michigan, Minnesota, and Wisconsin. The Southeast region includes North Carolina, South Carolina and Georgia.

Shipment Volumes

Truck shipments for all commodities and origins are not available. Those obtainable are reported, but should not be interpreted as representing complete movements of a commodity. Truck shipments from all States are collected at shipping points and include both interstate and intrastate movements. They are obtained from various sources, including Federal marketing orders, administrative committees, Federal State Inspection Service, and shippers. Volume amounts are represented in 10,000 pound units, or 1,000 10-lb packages but are converted to 1,000 tons for this report. Mexican border crossings through Arizona and Texas data is obtained from the Department of Homeland Security (DHS), U.S. Customs and Border and Protection (CBP) through USDA, AMS, Market News.

Rates

This information is compiled from the weekly Specialty Crops Truck Rate Report. Rates quoted represent open (spot) market rates that shippers or receivers pay depending on basis of sale, per load, including truck brokers fees for shipments in truck load volume to a single destination. Extra charges for delivery to terminal markets, multipickup and multidrop shipments are not included unless otherwise stated. Rates are based on the most usual loads in 48-53 foot trailers from the origin shipping area to the destination receiving city. In areas where rates are based on package rates, per load rates were derived by multiplying the package rate by the number of packages in the most usual load in a 48-53 foot trailer. Slightly cheaper rates will be reported during Quarters 2 and 3 as about 50 percent of onion shipments from California are hauled on open flatbed trailers. During Quarter 3, less than 20 percent of onions hauled from Washington, Idaho, and Oregon are on open flatbeds.

Regional Rates

Rate data for 10 destination markets are used to calculate average origin regional rates.

National Rates

The national rates reflect the average of the regional rates, separated by mileage category and weighted by volume between origin and destination.



Contact Us

Authors

Kranti Mulik, Coordinator; Analyst

Kranti.Mulik@usda.gov, 202.756.2577

Jesse Gastelle, Analyst

Jesse.Gastelle@usda.gov, 202.690.1144

Patty Willkie, Specialty Crops Program and Market News Division Data

Patty.Willkie@usda.gov, 202.720.2175

To subscribe, please send an e-mail to April.Taylor@usda.gov. Printed copies are available upon request.

For assistance with accessibility issues related to this document, please e-mail SharonC.Williams@usda.gov.

Related Websites

USDA's Agricultural Transportation Open Data Platform

<https://agtransport.usda.gov/>

Specialty Crops Program

<https://www.ams.usda.gov/about-ams/programs-offices/specialty-crops-program>

Specialty Crops Truck Rate Report

https://mymarketnews.ams.usda.gov/filerepo/reports?field_slug_id_value=2375

Specialty Crops Movement Reporting

<https://www.marketnews.usda.gov/mnp/fv-report-config-step1?type=movement>

Economic Research Service Vegetable and Pulses

<https://www.ers.usda.gov/topics/crops/vegetables-pulses/>

Economic Research Service Fruit and Tree Nuts

<https://www.ers.usda.gov/topics/crops/fruit-tree-nuts.aspx>

National Agricultural Statistics Service, Crops

https://www.nass.usda.gov/Statistics_by_Subject/index.php?sector=CROPS

Refrigerated Truck Quarterly Datasets

<https://www.ams.usda.gov/services/transportation-analysis/agricultural-refrigerated-truck-quarterly-datasets>

Protecting Perishable Foods During Transport by Truck and Rail

<https://edis.ifas.ufl.edu/pdffiles/HS/HS132800.pdf>

Preferred Citation

U.S. Department of Agriculture, Agricultural Marketing Service. *Agricultural Refrigerated Truck Quarterly Report*. July 2022 Web. <<https://dx.doi.org/10.9752/TS051.07-2022>>

Photo Credit

Burt Barnes

USDA is an equal opportunity provider, employer, and lender.