



Agricultural Refrigerated Truck Quarterly

a quarterly publication of the Agricultural Marketing Service

CONTENTS

National Summary.....	2	Quarterly Truck Availability.....	8	PNW.....	19
Quarterly Overview	2	Reported U.S. Shipments	10	Arizona	22
U.S. Truck Rates	3	Reported Shipments by Selected		Great Lakes	25
Truck Rates for Selected Routes.....	4	Commodities.....	11	Additional Information	28
U.S. Diesel Fuel Prices	5	Regional Markets.....	12	Terms and References.....	28
Relationship Between Diesel Fuel and		U.S.-Mexico Border	12	Contact Us.....	29
Truck Rates.....	6	California.....	16		



NATIONAL SUMMARY

Quarterly Overview

Fruit and Vegetable Shipments

USDA reported fourth quarter 2022 U.S. truck shipments of fresh produce were 8.93 million tons—1 percent lower than the previous quarter and 1 percent lower than fourth quarter 2021.

Also, in fourth quarter 2022, shipments from Mexico were 2.82 million tons, which was higher than from any other reported origin. Shipments from Mexico accounted for 32 percent of the total reported shipments of fresh fruit and vegetables. Shipments from the next five top regions by volume were as follows: California, 2.03 million tons (23 percent of the total); Pacific Northwest (PNW), 1.62 million tons (18 percent of the total); Canada, 545,000 tons (6 percent of the total); Arizona, 417,000 tons (5 percent of the total); and finally, Great Lakes, 285,000 tons (3 percent of the total).

These top five commodities accounted for 37 percent of reported truck movements in fourth quarter 2022:

- ▶ Potatoes (13 percent)
- ▶ Apples (9 percent)
- ▶ Onions, dry (6 percent)
- ▶ Oranges (5 percent)
- ▶ Grapes (4 percent)

Truck Rates

The table below provides a snapshot of quarterly truck rates for U.S. produce shipments over four mileage categories—1-500; 501-1,500; 1,501-2,500; and 2,501+ miles. Please note the U.S. average truck rates provided below were calculated using weighted regional rates and volumes.

Average U.S. Truck Rates for Selected Routes Between 501 and 1,500 Miles (\$/Mile)

	0-500 miles	501-1,500 miles	1,501-2,500 miles	2,501+ miles
Q4 2021	7.01	3.48	3.34	1.90
Q1 2022	6.86	3.61	3.19	1.96
Q2 2022	8.09	3.65	2.87	1.64
Q3 2022	8.40	3.23	2.86	1.50
Q4 2022	6.81	3.03	2.81	1.39
Q4 Change from Previous Quarter	-19%	-6%	-2%	-8%
Q4 Change from Same Quarter Last Year	-3%	-13%	-16%	-27%

Source: AMS Transportation Services Division analysis of AMS Specialty Crops Program Market News data.

Note: Table values may not conform exactly due to rounding.

Note: The rates for 8 long-haul fruit and vegetable truck corridors are included in the national rate, weighted by commodity and origin volume.

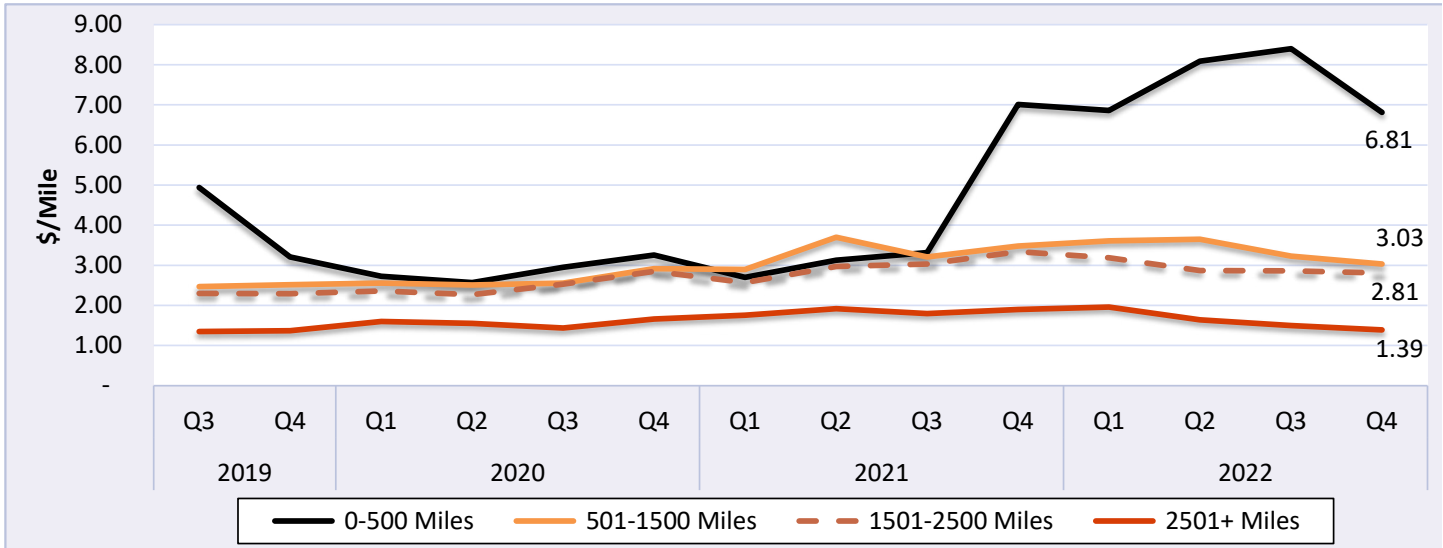
Diesel Fuel

During fourth quarter 2022, the U.S. diesel fuel price averaged \$5.06 per gallon—down 2 percent from the previous quarter, but up 38 percent from the same quarter in 2021.



U.S. Truck Rates

Figure 1: Average Truck Rates for Selected Routes (\$/Mile)



Source: AMS Transportation Services Division analysis of AMS Specialty Crops Program Market News data.

Note: The rates for 8 long-haul fruit and vegetable truck corridors are included in the national rates, weighted by commodity and origin volume.

Table 1: Average U.S. Truck Rates for Selected Routes Between 501 and 1,500 Miles (\$/Mile)

Year	1st Quarter	2nd Quarter	3rd Quarter	4th Quarter
2022	3.61	3.65	3.23	3.03
2021	2.90	3.70	3.21	3.48
2020	2.56	2.51	2.56	2.92
2019	2.59	2.60	2.47	2.52
2018	2.82	2.99	2.74	2.84
2017	1.86	2.41	2.33	2.56
2016	2.22	2.37	2.49	2.06
2015	2.47	2.63	2.59	2.36
2014	2.32	2.67	2.64	2.49
2013	2.24	2.60	2.62	2.27
2012	2.10	2.54	2.45	2.29
2011	2.02	2.60	2.77	2.26
2010	1.82	2.21	2.33	1.94

Source: AMS Transportation Services Division analysis of AMS Specialty Crops Program Market News data.

Note: The rates for 8 long-haul fruit and vegetable truck corridors are included in the national rate, weighted by commodity and origin volume.

Note: Table values may not conform exactly due to rounding.



AGRICULTURAL REFRIGERATED TRUCK QUARTERLY

Quarter 4, 2022

Table 2: Quarterly Rates for Key Origins by Month; 501-1,500 miles (\$/Mile)

U.S. Origin	4th Quarter, 2022			3rd Quarter, 2022		
	October	November	December	July	August	September
Arizona	n/a	3.5	3.21	n/a	n/a	n/a
California	3.92	3.72	3.54	4.85	4.48	4.38
Florida	1.78	2.04	2.32	n/a	n/a	1.87
Great Lakes	4.34	4.17	4.17	5.09	4.64	4.51
Mexico-Arizona	3.16	2.92	2.69	3.09	2.80	2.68
Mexico-Texas	2.90	2.93	3.44	3.11	3.01	2.90
New York	3.49	3.49	3.49	n/a	n/a	3.48
Other	3.51	3.16	3.09	3.58	3.56	3.51
PNW	2.47	2.81	3.43	2.84	2.63	2.41
Southeast	7.43	5.40	5.46	5.57	6.20	8.78

Source: AMS Transportation Services Division analysis of AMS Specialty Crops Program Market News data.

Note: "n/a" indicates rates not available.

Truck Rates for Selected Routes

Table 3: Origin-Destination Truck Rates for Selected Routes, 4th Quarter 2022 (\$/Mile)

U.S. Origin	Atlanta	Baltimore	Boston	Chicago	Dallas	Los Angeles	Miami	New York	Philadelphia	Seattle
Arizona	2.70	2.67	2.60	2.73	3.43	9.38	2.79	2.85	n/a	2.88
California	2.91	2.78	2.74	2.72	3.51	14.94	2.85	2.78	2.78	3.73
Florida	3.47	2.05	1.98	1.93	n/a	n/a	n/a	2.26	2.01	n/a
Great Lakes	4.22	4.53	4.44	5.49	3.74	n/a	3.50	4.75	3.92	n/a
Mexico-Arizona	3.14	2.91	2.76	2.27	3.41	2.43	2.70	2.95	2.92	n/a
Mexico-Texas	3.44	3.06	2.87	2.71	3.65	2.70	3.12	3.04	3.02	2.89
New York	3.85	6.52	17.06	3.04	2.78	n/a	3.59	18.33	n/a	n/a
Other	3.58	3.26	2.86	3.51	3.18	n/a	n/a	3.25	3.22	n/a
PNW	3.04	3.10	2.96	3.06	3.02	2.94	2.94	3.20	3.08	8.63
Southeast	7.19	6.98	6.88	5.88	n/a	0.80	4.74	7.02	6.08	n/a

Source: AMS Transportation Services Division analysis of AMS Specialty Crops Program Market News data.

Note: "n/a" indicates rates not available.



AGRICULTURAL REFRIGERATED TRUCK QUARTERLY

Quarter 4, 2022

Table 4: Origin-Destination Truck Rates for Selected Routes, 4th Quarter 2022 (\$/Truck)

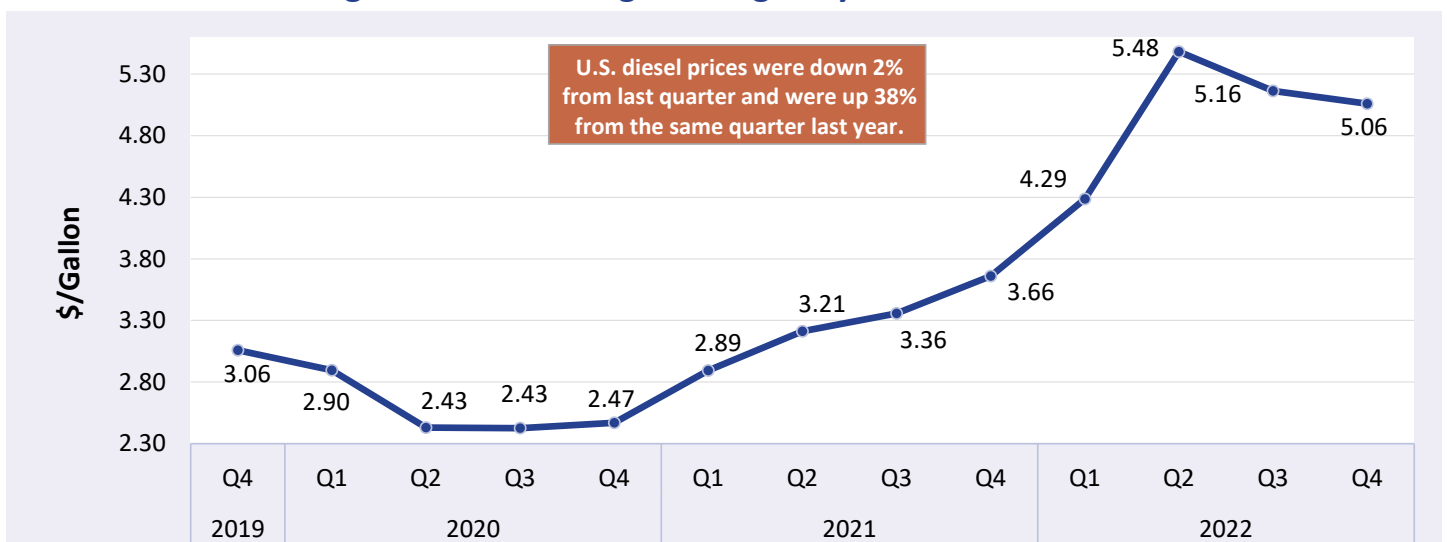
U.S. Origin	Atlanta	Baltimore	Boston	Chicago	Dallas	Los Angeles	Miami	New York	Philadelphia	Seattle
Arizona	5,669	6,950	7,550	5,550	4,457	1,406	7,250	7,706	n/a	3,750
California	6,514	7,573	8,407	5,705	5,194	1,556	8,009	7,937	7,830	4,061
Florida	1,126	2,036	2,765	1,943	n/a	n/a	n/a	2,660	2,196	n/a
Great Lakes	4,647	4,259	4,888	2,019	4,083	n/a	5,672	4,888	4,961	n/a
Mexico-Arizona	5,658	6,835	7,450	4,081	3,346	1,362	6,140	7,365	7,019	n/a
Mexico-Texas	3,958	5,485	6,308	3,881	1,827	4,323	4,769	6,081	5,731	6,938
New York	3,850	2,150	2,900	2,550	4,650	n/a	5,200	2,750	n/a	n/a
Other	3,200	5,838	5,562	2,600	2,325	n/a	n/a	6,225	5,925	n/a
PNW	7,082	7,600	8,136	5,474	5,534	3,004	8,763	8,165	7,750	1,208
Southeast	2,875	2,304	5,095	5,000	n/a	2,050	3,650	3,650	2,613	n/a

Source: AMS Transportation Services Division analysis of AMS Specialty Crops Program Market News data.
 Note: "n/a" indicates rates not available.

U.S. Diesel Fuel Prices

The diesel fuel price provides a proxy for trends in U.S. truck rates. Diesel fuel is a significant component underlying truck rates.

Figure 2: U.S. Average On-Highway Diesel Fuel Prices



Source: AMS Transportation Services Division analysis of Energy Information Administration/U.S. Department of Energy data.



AGRICULTURAL REFRIGERATED TRUCK QUARTERLY

Quarter 4, 2022

Table 5: Average Diesel Fuel Prices (All Types)

Region	4th Quarter 2022 Price \$/Gallon	Change From Last Quarter	Change From Last Year
East Coast	5.20	1%	43%
California	6.00	-5%	28%
New England	5.60	5%	56%
Central Atlantic	5.65	4%	49%
Lower Atlantic	5.00	-1%	41%
Gulf Coast	4.67	-4%	37%
Midwest	5.03	-3%	41%
Rocky Mountain	5.19	< 1%	38%
West Coast Except California	5.26	-3%	34%
U.S.	5.06	-2%	38%

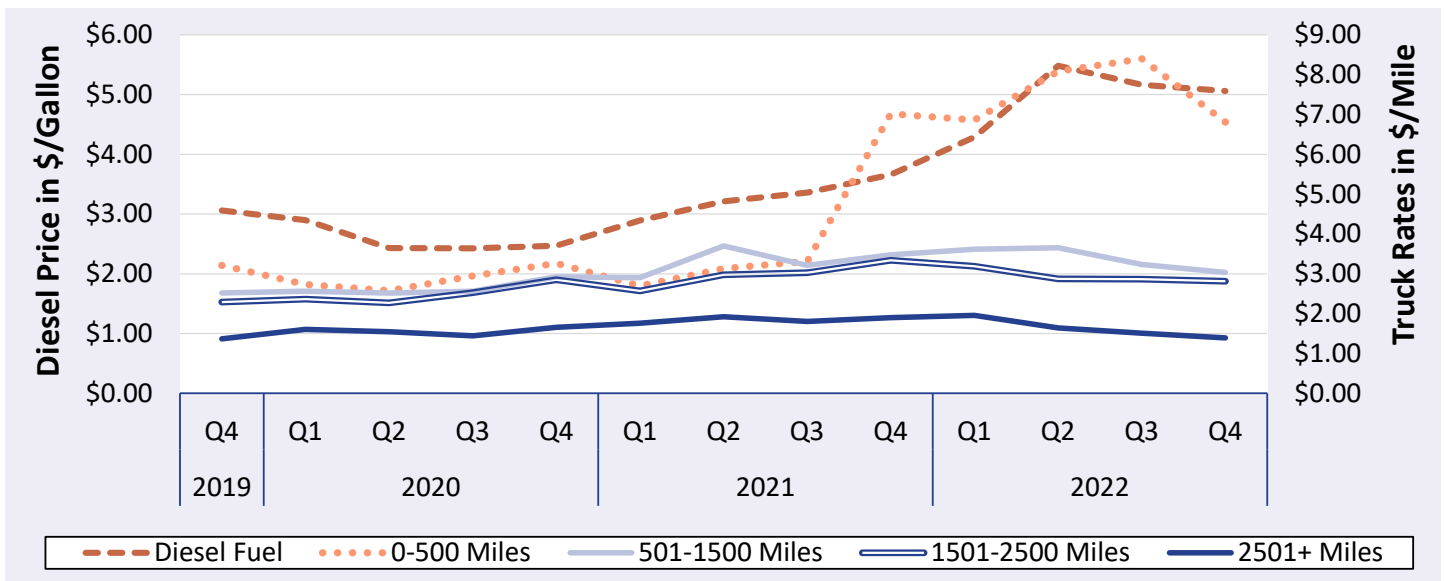
Source: AMS Transportation Services Division analysis of Energy Information Administration/U.S. Department of Energy data.

Note: Table values may not conform exactly due to rounding.

Relationship Between Diesel Fuel and Truck Rates

The diesel fuel price provides a proxy for trends in U.S. truck rates. Diesel fuel is a significant expense for fruit and vegetable movements.

Figure 3: U.S. Average On-Highway Diesel Fuel Prices and Truck Rates



Sources: AMS Transportation Services Division analysis of AMS Specialty Crops Program Market News data and Energy Information Administration/U.S. Department of Energy data.

Note: The rates for 8 long-haul fruit and vegetable truck corridors are included in the national rates, weighted by origin volume.



AGRICULTURAL REFRIGERATED TRUCK QUARTERLY

Quarter 4, 2022

Table 6: Average Diesel Fuel Prices and Truck Rates

Year	Quarter	Diesel Fuel (\$/gallon)	Truck Rates (\$/mile) 501-1500 miles	% Change From			
				Last Quarter		Last Year	
				Diesel	Truck	Diesel	Truck
2019	Q4	3.06	2.52	1%	2%	-6%	-11%
2020	Q1	2.90	2.56	-5%	2%	-4%	-1%
	Q2	2.43	2.51	-16%	-2%	-22%	-3%
	Q3	2.43	2.56	> -1%	2%	-20%	4%
	Q4	2.47	2.92	2%	14%	-19%	16%
2021	Q1	2.89	2.90	17%	-1%	> -1%	14%
	Q2	3.21	3.70	11%	27%	32%	47%
	Q3	3.36	3.21	5%	-13%	38%	25%
	Q4	3.66	3.48	9%	8%	48%	19%
2022	Q1	4.29	3.61	17%	4%	48%	24%
	Q2	5.48	3.65	28%	1%	71%	-1%
	Q3	5.16	3.23	-6%	-12%	54%	1%
	Q4	5.06	3.03	-2%	-6%	38%	-13%

Sources: AMS Transportation Services Division analysis of AMS Specialty Crops Program Market News data and Energy Information Administration/U.S. Department of Energy data.

Note: Table values may not conform exactly due to rounding.



AGRICULTURAL REFRIGERATED TRUCK QUARTERLY

Quarter 4, 2022

Quarterly Truck Availability

Table 7: U.S. Fresh Fruit and Vegetable Truck Availability

Truck availability legend														
1=Surplus	2=Slight surplus	3=Adequate	4=Slight shortage				5=Shortage							
California, Central, And Western Arizona	Commodities	10/4	10/11	10/18	10/25	11/1	11/8	11/15	11/22	11/29	12/6	12/13	12/20	12/27
Imperial, Coachella Valleys Ca, Central And Western Az, Mexico Crossings Through Calexico And San Luis	Anise, Beets, Bok Choy, Broccoli, Brussels Sprouts, Fresh Cut Cabbage, Cauliflower, Chinese Cabbage, Cilantro, Endive, Escarole, Kale Greens, Leeks, Green Leaf Lettuce, Iceberg Lettuce, Red Leaf Lettuce, Romaine Lettuce, Green Onions, Parsley, Radishes, Spinach						3	3	3	3	2	3	3	3
Kern District California	Carrots, Grapes	3	3	3	3	3	3	3	3	3	2	3	3	3
Northern California Including San Joaquin Valley	Pears	3	3											
Oxnard District California	Artichokes, Brussels Sprouts, Fresh Cut Cabbage, Celery, Cilantro, Kale Greens, Parsley, Radishes, Spinach, Romaine Lettuce, Leeks	3	3	3	3	3	3	3	3	3	2	3	3	3
Salinas-Watsonville California	Artichokes, Broccoli, Brussels Sprouts, Cauliflower, Celery, Anise, Bok Choy, Cabbage, Chinese Cabbage, Kale Greens, Leeks, Green Leaf Lettuce, Iceberg Lettuce, Red Leaf Lettuce, Romaine Lettuce, Parsley, Radishes, Cilantro, Endive, Escarole, Boston Lettuce, Spinach	3	3	3	3	3	3	3	3	3	2	3	3	3
San Joaquin Valley California	Grapes	3	3	3	3	3		3	3					
Santa Maria California	Broccoli, Cabbage, Cauliflower, Celery, Bok Choy, Brussels Sprouts, Chinese Cabbage, Cilantro, Leeks, Green Leaf Lettuce, Iceberg Lettuce, Romaine Lettuce, Spinach, Anise, Endive, Escarole, Kale Greens, Red Leaf Lettuce, Parsley, Radishes	3	3	3	3	3	3	3	3	3	2	3	3	3
South District California	Lemons, Oranges	3	3	3	3	3	3	3	3	3	3	3	3	3
Florida	Commodities	10/4	10/11	10/18	10/25	11/1	11/8	11/15	11/22	11/29	12/6	12/13	12/20	12/27
Central And South Florida	Round Green Beans, Cabbage, Sweet Corn, Cucumbers, Eggplant, Endive, Escarole, Okra, Bell Peppers, Other Peppers, Radishes, Squash, Strawberries, Tomatoes, Cherry Tomatoes, Grape Tomatoes, Plum Tomatoes							1	2	1	2	2	2	4
West District Florida	Tomatoes, Cherry Tomatoes, Grape Tomatoes, Plum Tomatoes	3	3	3	3	1	1	1	2	1	2			

Source: AMS Transportation Services Division analysis of AMS Specialty Crops Program Market News data.
 Note: Empty cells were not reported.



AGRICULTURAL REFRIGERATED TRUCK QUARTERLY

Quarter 4, 2022

Table 7, continued: U.S. Fresh Fruit and Vegetable Truck Availability

Truck availability legend																	
1=Surplus	2=Slight surplus	3=Adequate	4=Slight shortage	5=Shortage													
Great Lakes (MI & WI)	Commodities				10/4	10/11	10/18	10/25	11/1	11/8	11/15	11/22	11/29	12/6	12/13	12/20	12/27
Central Wisconsin	Dry Onions, Potatoes				3	3	3	3	3	3	3	3	3	3	3	3	3
U.S.-Mexico border	Commodities				10/4	10/11	10/18	10/25	11/1	11/8	11/15	11/22	11/29	12/6	12/13	12/20	12/27
Imperial, Coachella Valleys Ca, Central And Western Az, Mexico Crossings Through Calexico And San Luis	Anise, Beets, Bok Choy, Broccoli, Brussels Sprouts, Fresh Cut Cabbage, Cauliflower, Chinese Cabbage, Cilantro, Endive, Escarole, Kale Greens, Leeks, Green Leaf Lettuce, Iceberg Lettuce, Red Leaf Lettuce, Romaine Lettuce, Green Onions, Parsley, Radishes, Spinach									3	3	3	3	2	3	3	3
Nogales, Arizona	Cantaloupe, Cucumbers, Honeydews, Acorn Squash, Butternut Squash, Grey Squash, Kabocha Squash, Spaghetti Squash, Yellow Squash Straightneck, Zucchini Squash, Tomatoes, Grape Tomatoes, Plum Tomatoes, Watermelons, Squash, Mangos				2	2	3	3	3	3	3	3	3	3	3	3	4
South Texas	Asparagus, Broccoli, Carrots, Chayote, Cilantro, Cucumbers, Grapefruit, Limes, Mangos, Oranges, Papaya, Anaheim Peppers, Bell Peppers, Habanero Peppers, Jalapeno Peppers, Poblano Peppers, Serrano Peppers, Pineapples, Tomatillos, Tomatoes, Grape Tomatoes, Plum Tomatoes, Watermelons				1	2	3	1	1	1	1	1	3	2	2	2	4
Pacific Northwest (ID, OR, & WA)	Commodities				10/4	10/11	10/18	10/25	11/1	11/8	11/15	11/22	11/29	12/6	12/13	12/20	12/27
Columbia Basin Washington	Dry Onions, Potatoes				3	3	3	3	3	3	3	4	3	3	3	3	3
Idaho And Malheur County, Oregon	Dry Onions												3	3	3	3	3
Upper Valley, Twin Falls-Burley District Idaho	Potatoes				4	4	3	3	3	3	3	4	3	3	3	3	3
Yakima Valley And Wenatchee District, Washington	Apples, Pears				3	3	3	3	3	2	4	4	3	3	3	3	3
Southeast (GA, SC, & NC)	Commodities				10/4	10/11	10/18	10/25	11/1	11/8	11/15	11/22	11/29	12/6	12/13	12/20	12/27
Eastern North Carolina	Sweet Potatoes				3	4	3	3	3	3	4	5	5	3	3	4	

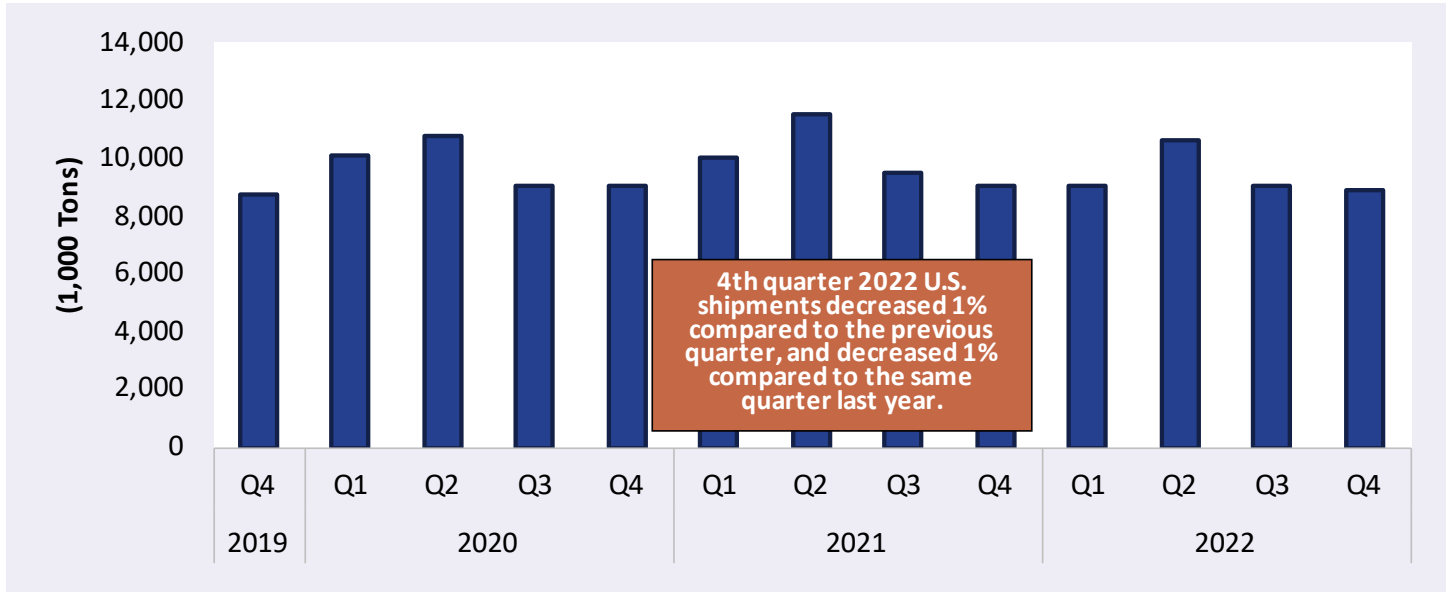
Source: AMS Transportation Services Division analysis of AMS Specialty Crops Program Market News data.

Note: Empty cells were not reported.



Reported U.S. Shipments

Figure 4: Reported U.S. Fruit and Vegetable Shipments (1,000 Tons)



Source: AMS Transportation Services Division analysis of AMS Specialty Crops Program Market News data.

Table 8: Reported U.S. Fruit and Vegetable Shipments (1,000 Tons)

Year	1st Quarter	2nd Quarter	3rd Quarter	4th Quarter	Annual
2022	9,010	10,634	9,032	8,930	37,606
2021	10,051	11,520	9,498	9,034	40,103
2020	10,081	10,750	9,058	9,007	38,895
2019	9,381	10,246	8,687	8,714	37,028
2018	9,421	10,795	8,789	8,503	37,508
2017	8,072	9,642	8,479	8,267	34,459
2016	8,094	9,761	8,541	8,188	34,583
2015	8,118	9,630	8,324	7,771	33,842
2014	7,733	9,139	8,080	7,725	32,677
2013	7,451	8,972	7,762	7,527	31,712
2012	7,577	9,008	7,774	7,532	31,890
2011	7,007	8,981	7,887	7,988	31,863
2010	7,065	8,881	7,985	7,522	31,454
2009	7,158	8,728	7,990	7,270	31,147
2008	7,059	8,666	7,426	6,904	30,057
2007	6,959	8,585	7,475	7,099	30,118
2006	6,335	8,400	7,854	6,960	29,550

Source: AMS Transportation Services Division analysis of AMS Specialty Crops Program Market News data.

Note: Table values may not conform exactly due to rounding.



Reported Shipments by Selected Commodities

Table 9: Reported Top 10 Commodity Shipments (1,000 Tons)

Commodity	4th Quarter 2022	Previous Quarter	Same Quarter Last Year	Current Quarter as % change from:	
				Previous Qtr	Same Qtr Last Year
Potatoes	1,172	1,020	1,157	15%	1%
Apples	819	590	822	39%	> -1%
Onions Dry	519	543	511	-4%	2%
Oranges	408	177	389	130%	5%
Grapes	354	408	352	-13%	1%
Avocados	323	467	608	-31%	-47%
Tomatoes	316	488	483	-35%	-35%
Cucumbers	308	444	591	-31%	-48%
Lettuce, Iceberg	260	318	322	-18%	-19%
Peppers, Bell Type	260	332	404	-22%	-36%

Source: AMS Transportation Services Division analysis of AMS Specialty Crops Program Market News data.
Note: Table values may not conform exactly due to rounding.

Table 10: Reported Top 10 Regions (1,000 Tons)

Origin	4th Quarter 2022 Volume	% Change from Last Quarter	% Change From Same Quarter Last Year
Mexico	2,823	28%	3%
California	2,025	-32%	-5%
PNW	1,621	18%	-1%
Canada	545	-10%	10%
Arizona	417	624%	0%
Great Lakes	285	-10%	3%
Florida	259	1,126%	-29%
Colorado	254	91%	2%
Southeast	188	-53%	9%
New York	131	116%	-11%

Source: AMS Transportation Services Division analysis of AMS Specialty Crops Program Market News data.
Note: Table values may not conform exactly due to rounding.
Note: Due to a lack of rate and availability data, Canada is excluded from the Regional Markets section of this report.



REGIONAL MARKETS

U.S.-Mexico Border

Volume

Total reported shipments of fruit and vegetables from Mexico in fourth quarter 2022 were 2.82 million tons—3 percent higher than fourth quarter 2021 (year to year). The sum of the top five commodities shipped from the U.S.-Mexico border decreased 1 percent year to year. Two of the top five commodities saw year-to-year decreases in the fourth quarter, including tomatoes, plum type (down 13 percent), and cucumbers (down 11 percent). Shipments of tomatoes increased 17 percent; shipments of avocados increased 5 percent; and shipments of watermelons, seedless, increased 5 percent.

Rates

The quarterly average truck rate for shipments between 501 miles and 1,500 miles from Arizona-Mexico border crossings was \$2.92 per mile—up 2 percent from third quarter 2022 to fourth quarter 2022 (quarter to quarter), and down 11 percent year to year. Rates for shipments between 501 miles and 1,500 miles from Texas-Mexico border crossings averaged \$3.08 per mile—up 2 percent quarter to quarter and down 11 percent year to year.

Truck Overview

Diesel fuel prices for border crossings from Arizona averaged \$5.26 per gallon—down 3 percent quarter to quarter and up 34 percent year to year. Diesel fuel prices for border crossings from Texas averaged \$4.67 per gallon—down 4 percent quarter to quarter and up 37 percent year to year. Mexico crossings through Calexico and San Luis reported adequate truck availability in November and December. (Truck availability was not reported in October.) Mexico crossings through Nogales, AZ, reported adequate truck availability throughout the quarter. Mexico crossings through South Texas reported a slight surplus of trucks in October, a surplus of trucks in November, and adequate truck availability in December.

Table 11: Reported Top Five Commodities Shipped from Mexico (1,000 tons)

Commodity	4th Quarter 2022	Share of Mexico-Total Total	Previous Quarter	Same Quarter Last Year	Current Quarter as % change from:	
					Previous Qtr	Same Qtr Last Year
Avocados	318	11%	216	302	47%	5%
Cucumbers	228	8%	153	256	49%	-11%
Tomatoes, Plum Type	215	8%	230	248	-7%	-13%
Watermelons, Seedless	181	6%	39	173	361%	5%
Tomatoes	177	6%	146	151	21%	17%
Top 5 Total	1,119	40%	784	1,129	43%	-1%
Mexico Total	2,823	100%	2,207	2,744	28%	3%

Source: AMS Transportation Services Division analysis of AMS Specialty Crops Program Market News data.

Any "-" in the table indicates no reported shipments during the quarter or a percentage change with an at- or near-zero denominator.

Note: Table values may not conform exactly due to rounding.



AGRICULTURAL REFRIGERATED TRUCK QUARTERLY

Quarter 4, 2022

Table 12: Top 5 Commodities Shipped to U.S. from Mexico by State of Entry (1,000 tons)

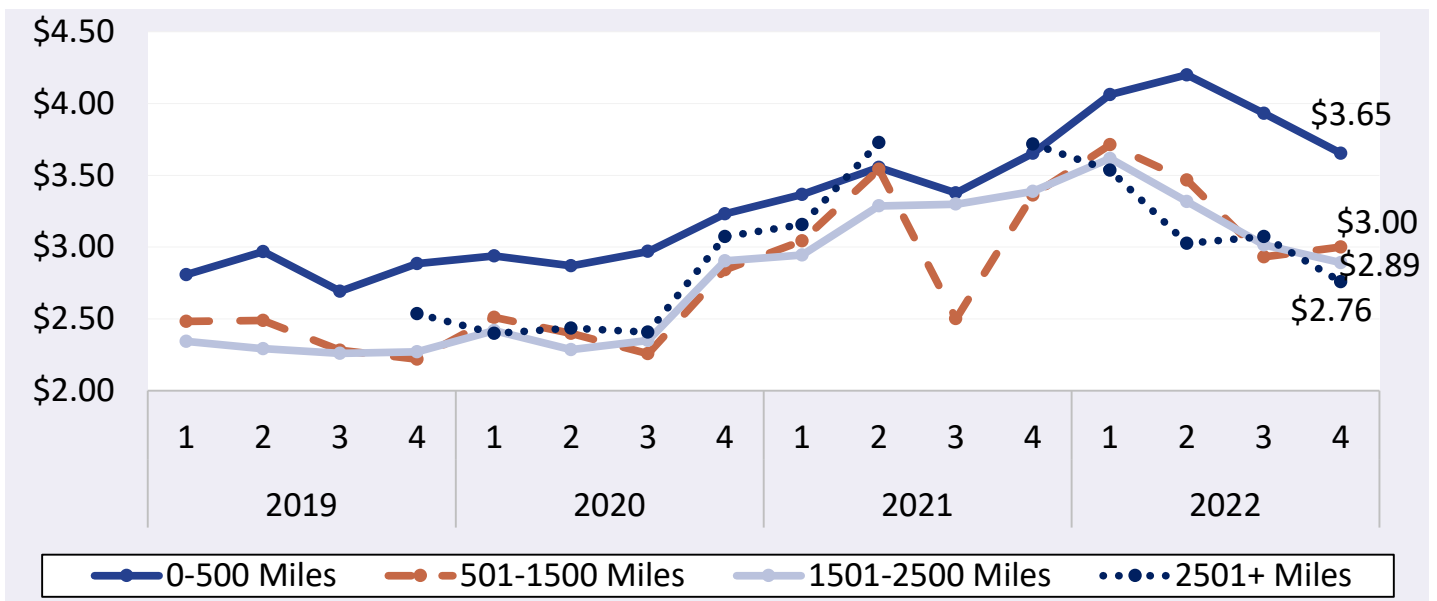
Texas		California		Arizona		New Mexico	
Commodity	4th Quarter 2022	Commodity	4th Quarter 2022	Commodity	4th Quarter 2022	Commodity	4th Quarter 2022
Avocados	308	Tomatoes, Plum Type	65	Squash	126	Peppers, Other	52
Limes	148	Onions Green	41	Cucumbers	119	Pumpkins	< 1
Tomatoes, Plum Type	132	Misc Tropical	38	Watermelons, Seedless	107	Misc Tropical	< 1
Tomatoes	126	Cucumbers	31	Peppers, Bell Type	47	Garlic	< 1
Broccoli	84	Asparagus	24	Tomatoes	39	Onions Dry	< 1
Mexico through TX Total	1,706	Mexico through CA Total	405	Mexico through AZ Total	659	Mexico through NM Total	53

Source: AMS Transportation Services Division analysis of AMS Specialty Crops Program Market News data.

Any "-" in the table indicates no reported shipments during the quarter.

Note: Table values may not conform exactly due to rounding.

Figure 5: Truck Rates from U.S.-Mexico Border (\$/Mile by Distance Traveled)



Source: AMS Transportation Services Division analysis of AMS Specialty Crops Program Market News data.

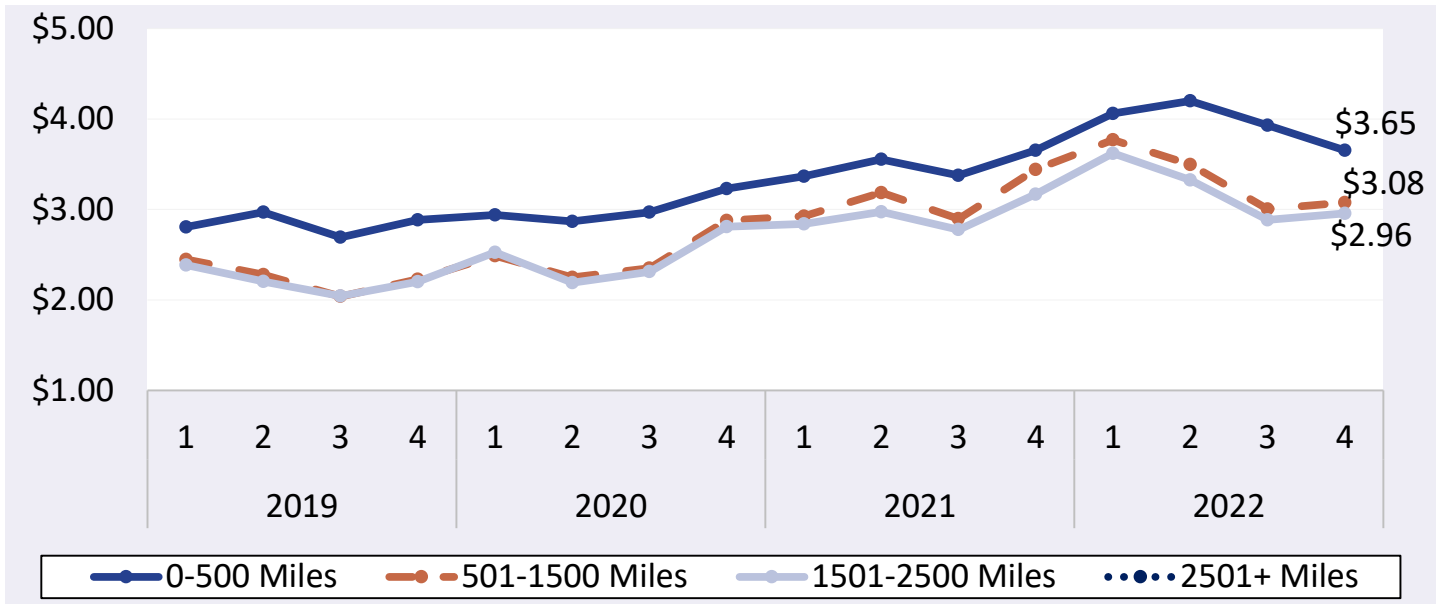
Any gaps in the chart lines are the result of quarters with no reported data for the region.



AGRICULTURAL REFRIGERATED TRUCK QUARTERLY

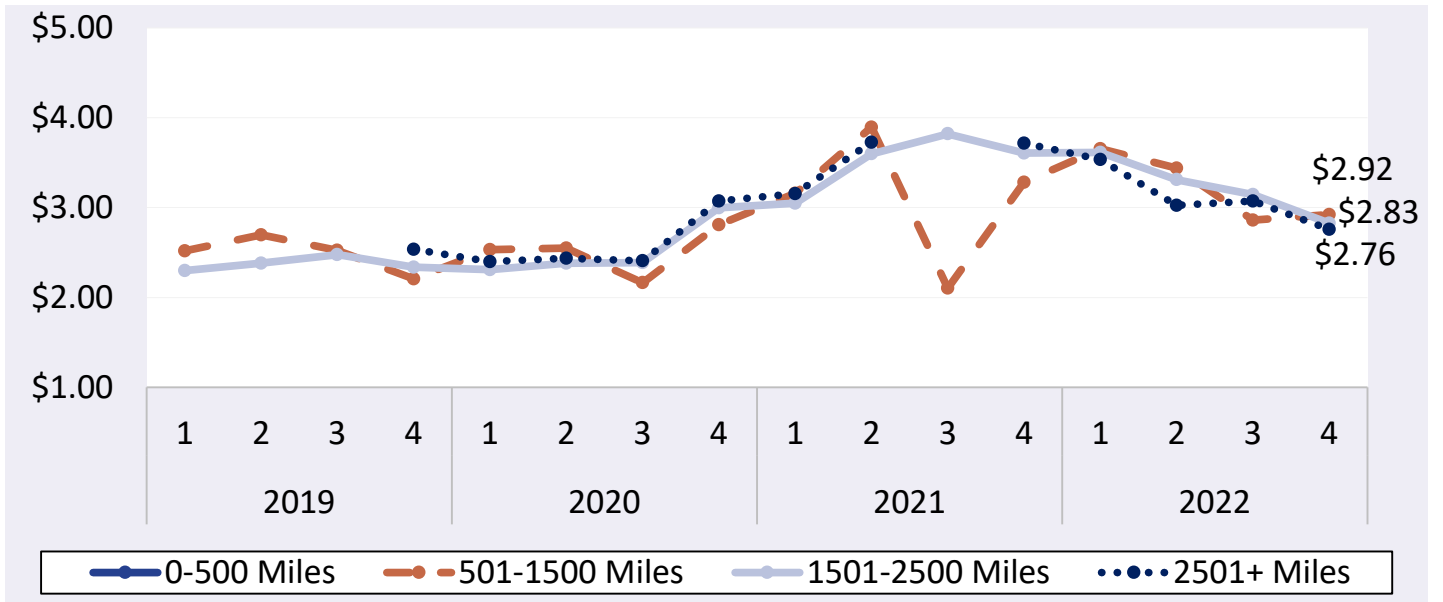
Quarter 4, 2022

Figure 6: Texas Truck Rates from U.S.-Mexico Border (\$/Mile by Distance Traveled)



Source: AMS Transportation Services Division analysis of AMS Specialty Crops Program Market News data.
Any gaps in the chart lines are the result of quarters with no reported data for the region.

Figure 7: Arizona Truck Rates from U.S.-Mexico Border (\$/Mile by Distance Traveled)



Source: AMS Transportation Services Division analysis of AMS Specialty Crops Program Market News data.
Any gaps in the chart lines are the result of quarters with no reported data for the region.



AGRICULTURAL REFRIGERATED TRUCK QUARTERLY

Quarter 4, 2022

Table 13: Truck Overview from the U.S.-Mexico Border

Region/Reporting District	October	November	December	4th Quarter
Imperial, Coachella Valleys Ca, Central And Western Az, Mexico Crossings Through Calexico And San Luis	-	3	2.78	2.89
Mexico Crossings Through Nogales, Arizona	2.5	2.80	3.28	2.86
Mexico Crossings Through South Texas	1.7	1.4	2.6	1.9
Regional Average Availability	2.1	2.40	2.89	2.46
Diesel Fuel Price (\$/gallon), through Texas	4.89	4.83	4.31	4.67
Diesel Fuel Price (\$/gallon), through Arizona	5.41	5.40	4.98	5.26

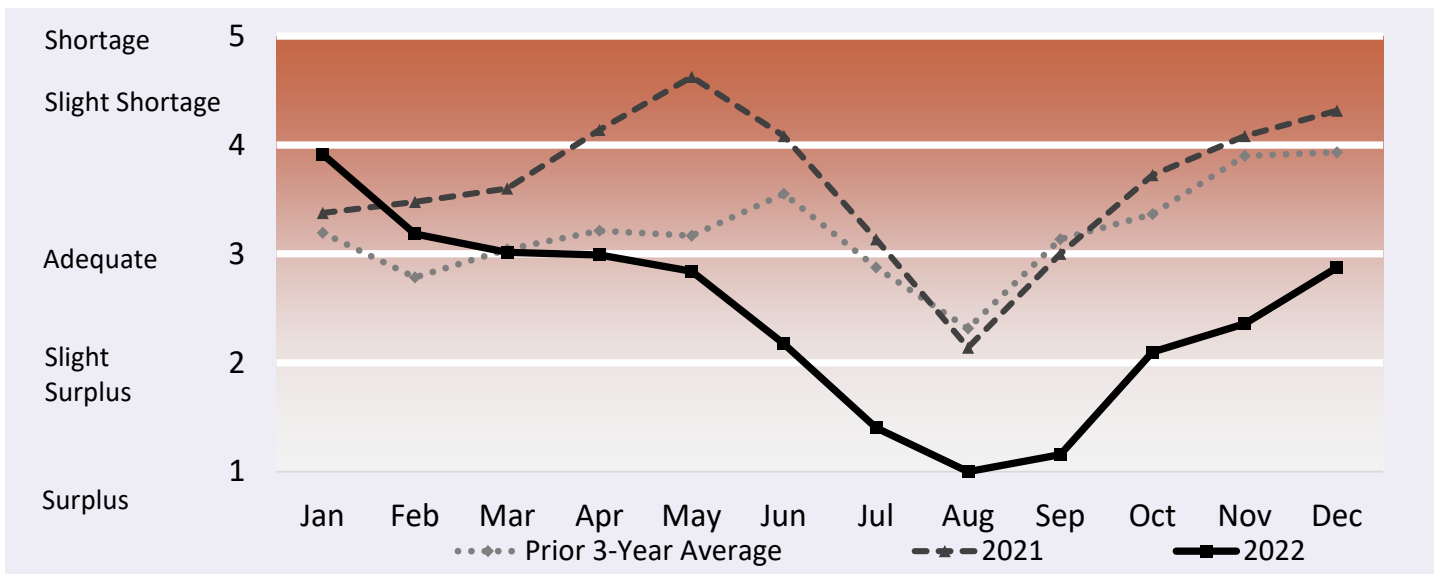
Source: AMS Transportation Services Division analysis of AMS Specialty Crops Program Market News data.

Any "-" in the table indicates no reported shipments during the quarter.

Note: Table values may not conform exactly due to rounding.

Note: AMS Specialty Crops Program defines regions by commodity, which may overlap in truck availability reporting.

Figure 8: Refrigerated Truck Availability Monthly Ratings from the U.S.-Mexico Border



Source: AMS Transportation Services Division analysis of AMS Specialty Crops Program Market News data.

Any gaps in the chart lines are the result of quarters with no reported data for the region.



California

Volume

In fourth quarter 2022, USDA reported total shipments of fruit and vegetables from California were 2.03 million tons—down 5 percent from fourth quarter 2021. The sum of the top five commodities shipped from California increased 5 percent year to year. Four of the top five commodities saw year-to-year increases, including lemons (up 16 percent); oranges (up 9 percent); clementines (up 9 percent); and grapes (up 1 percent). Shipments of celery decreased 8 percent.

Rates

In fourth quarter 2022, truck rates for shipments between 501 miles and 1,500 miles averaged \$3.71 per mile. This was down 19 percent quarter to quarter and down 29 percent year to year.

Truck Overview

Diesel fuel prices averaged \$6.00 per gallon—a 5-percent decrease quarter to quarter and a 28-percent increase year to year. Throughout the quarter, monthly average truck availability was reported as adequate for all California districts.

Table 14: Reported Top Five Commodities Shipped from California (1,000 tons)

Commodity	4th Quarter 2022	Share of California Total	Previous Quarter	Same Quarter Last Year	Current Quarter as % change from:	
					Previous Qtr	Same Qtr Last Year
Oranges	359	18%	170	330	112%	9%
Grapes	354	17%	384	352	-8%	1%
Lemons	214	11%	132	185	63%	16%
Clementines	199	10%	-	182	-	9%
Celery	181	9%	160	198	14%	-8%
Top 5 Total	1,307	65%	846	1,246	55%	5%
California Total	2,025	100%	2,977	2,143	-32%	-5%

Source: AMS Transportation Services Division analysis of AMS Specialty Crops Program Market News data.

Any "-" in the table indicates no reported shipments during the quarter or a percentage change with an at- or near-zero denominator.

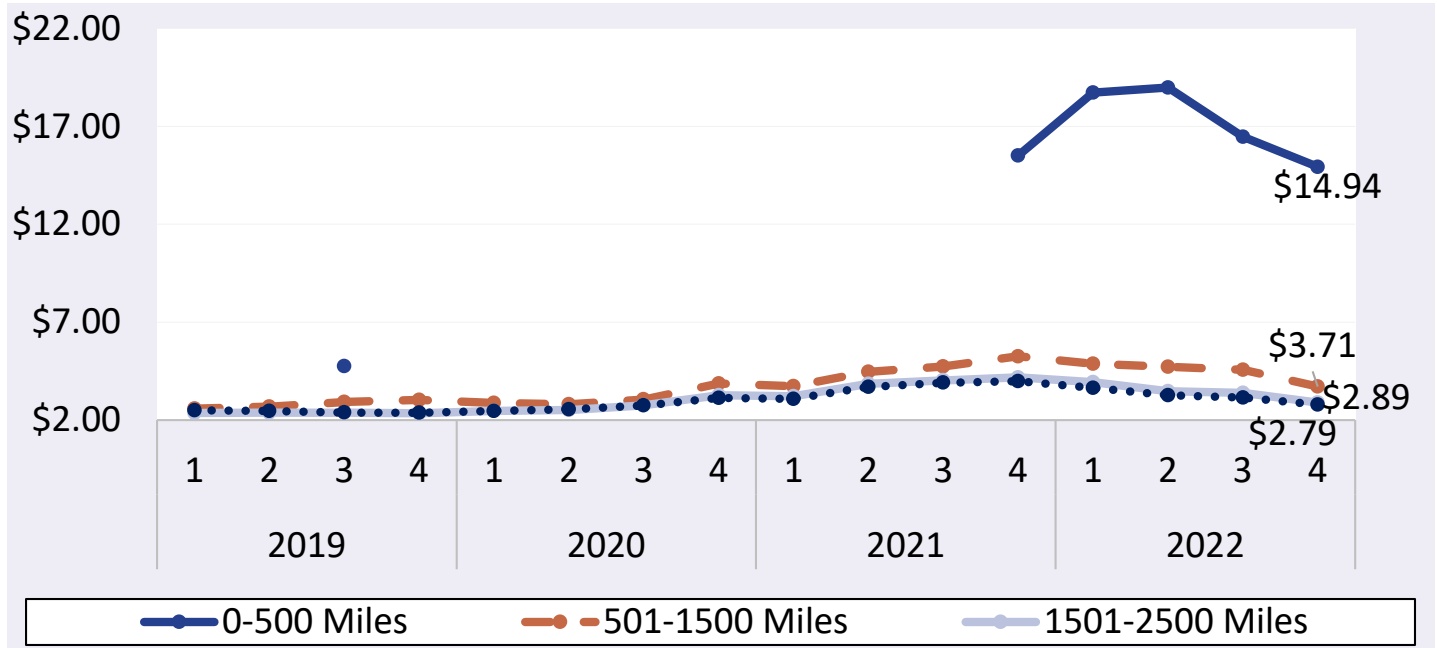
Note: Table values may not conform exactly due to rounding.



AGRICULTURAL REFRIGERATED TRUCK QUARTERLY

Quarter 4, 2022

Figure 9: California Truck Rates (\$/Mile by Distance Travelled)



Source: AMS Transportation Services Division analysis of AMS Specialty Crops Program Market News data.
Any gaps in the chart lines are the result of quarters with no reported data for the region.

Table 15: California Truck Overview (Availability Rating: 1=Surplus to 5=Shortage)

Region/Reporting District	October	November	December	4th Quarter
Kern District California	3	3	2.75	2.92
Northern California Including San Joaquin Valley	3	-	-	3
Oxnard District California	3	3	2.75	2.92
Salinas-Watsonville California	3	3	2.75	2.92
San Joaquin Valley California	3	3	-	3
Santa Maria California	3	3	2.75	2.92
South District California	3	3	3	3
Regional Average Availability	3	3	2.8	2.93
Diesel Fuel Price (\$/gallon)	6.33	6.12	5.56	6.00

Source: AMS Transportation Services Division analysis of AMS Specialty Crops Program Market News data.

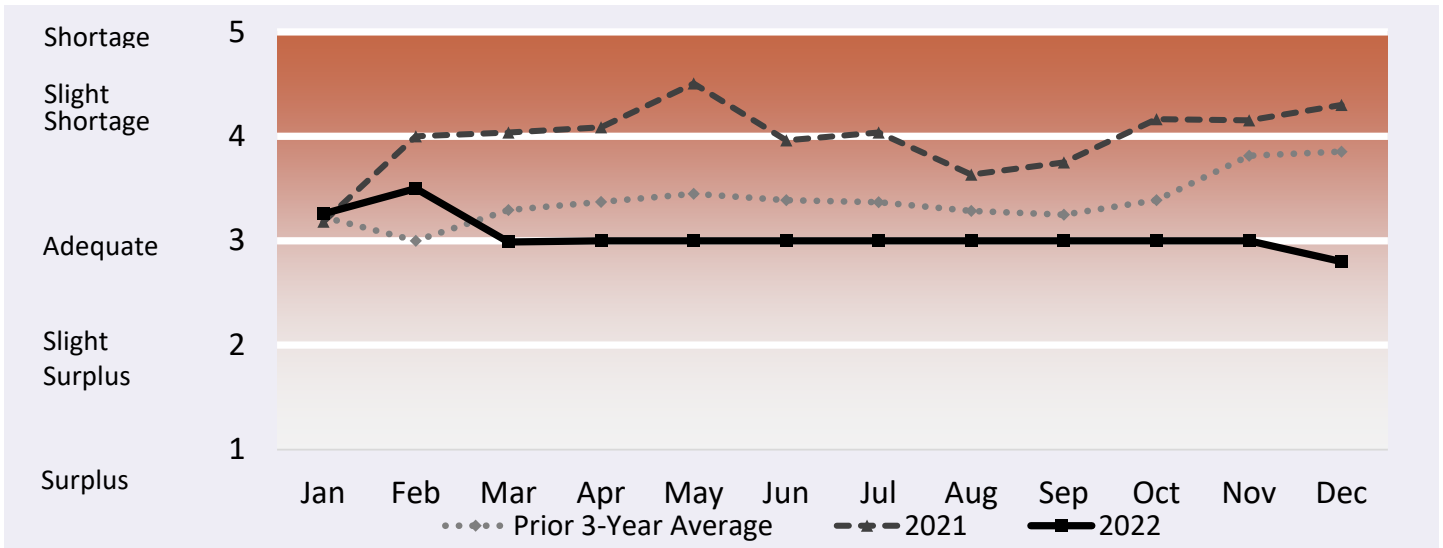
Any "-" in the table indicates no reported shipments during the quarter.

Note: Table values may not conform exactly due to rounding.

Note: AMS Specialty Crops Program defines regions by commodity, which may overlap in truck availability reporting.



Figure 10: Refrigerated Truck Availability Monthly Ratings for California



Source: AMS Transportation Services Division analysis of AMS Specialty Crops Program Market News data.
Any gaps in the chart lines are the result of quarters with no reported data for the region.



AGRICULTURAL REFRIGERATED TRUCK QUARTERLY

Quarter 4, 2022

PNW

Volume

In fourth quarter 2022, total reported shipments of fruit and vegetables from PNW were 1.62 million tons, decreasing 1 percent year to year. The sum of the top five commodities shipped from PNW also decreased 1 percent year to year. Two of the top five commodities saw year-to-year decreases, including apples (down 7 percent) and potatoes (down 2 percent). Shipments of peaches increased 1,053 percent; shipments of onions, dry, increased 8 percent; and shipments of pears increased 5 percent.

Rates

The quarterly average truck rate for shipments between 501 miles and 1,500 miles was \$2.94 per mile, increasing 13 percent quarter to quarter and decreasing 7 percent year to year.

Truck Overview

Diesel fuel prices averaged \$5.26 per gallon—down 3 percent quarter to quarter and up 34 percent year to year. Throughout the quarter, monthly average truck availability was reported as adequate for all PNW districts.

Table 16: Reported Top Five Commodities Shipped from PNW (1,000 tons)

Commodity	4th Quarter 2022	Share of PNW Total	Previous Quarter	Same Quarter Last Year	Current Quarter as % change from:	
					Previous Qtr	Same Qtr Last Year
Apples	630	39%	540	676	17%	-7%
Potatoes	437	27%	430	447	1%	-2%
Onions Dry	385	24%	222	357	73%	8%
Pears	167	10%	34	159	394%	5%
Peaches	1	< 1%	10	< 1	-89%	1,053%
Top 5 Total	1,620	100%	1,236	1,640	31%	-1%
PNW Total	1,621	100%	1,377	1,640	18%	-1%

Source: AMS Transportation Services Division analysis of AMS Specialty Crops Program Market News data.

Any "-" in the table indicates no reported shipments during the quarter or a percentage change with an at- or near-zero denominator.

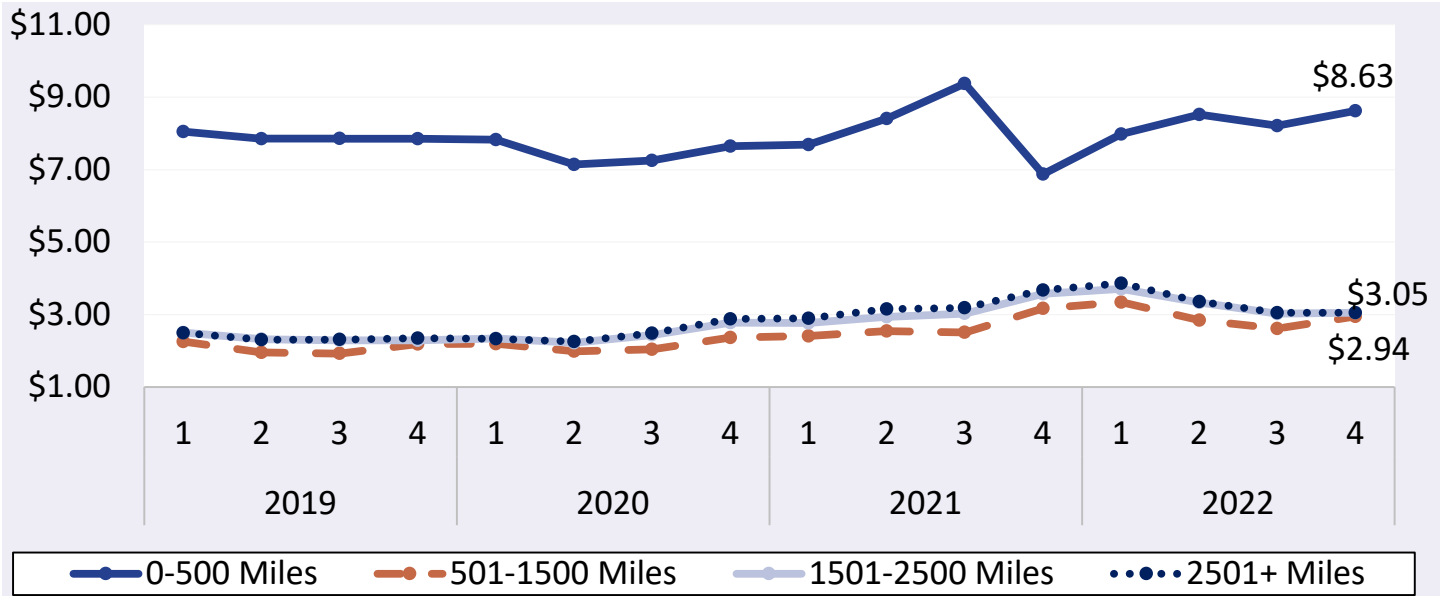
Note: Table values may not conform exactly due to rounding.



AGRICULTURAL REFRIGERATED TRUCK QUARTERLY

Quarter 4, 2022

Figure 11: PNW Truck Rates (\$/Mile by Distance Travelled)



Source: AMS Transportation Services Division analysis of AMS Specialty Crops Program Market News data. Any gaps in the chart lines are the result of quarters with no reported data for the region.

Table 17: PNW Truck Overview (Availability Rating: 1=Surplus to 5=Shortage)

Region/Reporting District	October	November	December	4th Quarter
Columbia Basin Washington	3	3.21	3	3.07
Idaho And Malheur County, Oregon	-	3	3	3
Upper Valley, Twin Falls-Burley District Idaho	3.44	3.2	3	3.21
Yakima Valley And Wenatchee District, Washington	3	3.18	3	3.06
Regional Average Availability	3.15	3.15	3	3.10
Diesel Fuel Price (\$/gallon)	5.41	5.40	4.98	5.26

Source: AMS Transportation Services Division analysis of AMS Specialty Crops Program Market News data.

Any "-" in the table indicates no reported shipments during the quarter.

Note: Table values may not conform exactly due to rounding.

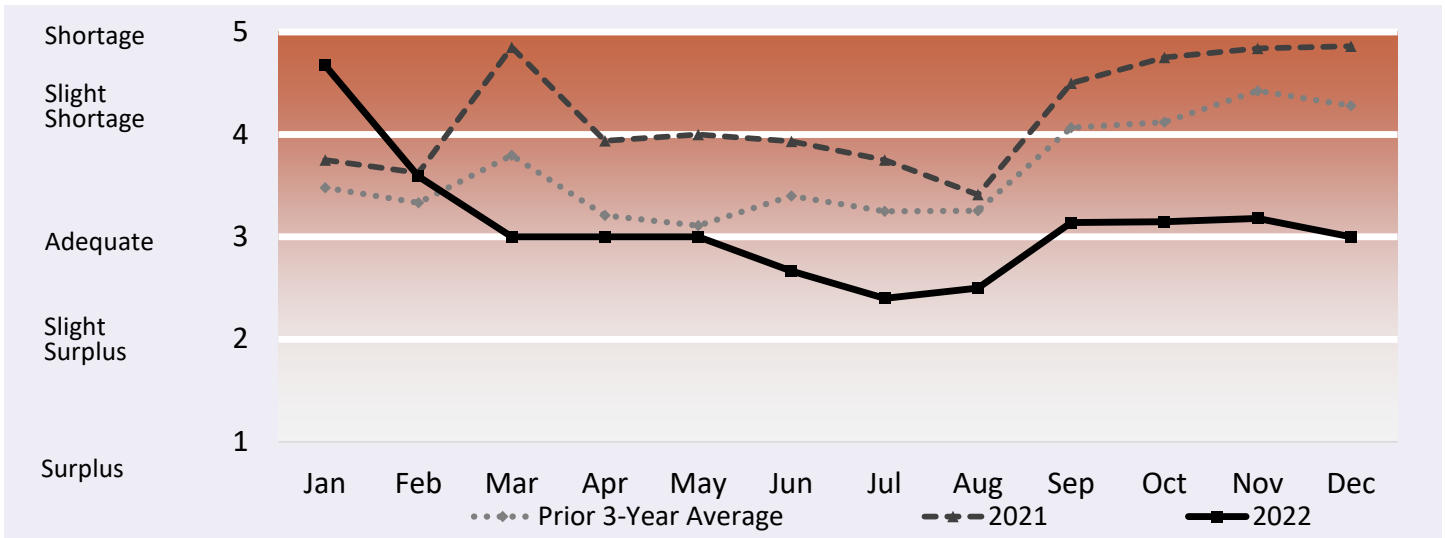
Note: AMS Specialty Crops Program defines regions by commodity, which may overlap in truck availability reporting.



AGRICULTURAL REFRIGERATED TRUCK QUARTERLY

Quarter 4, 2022

Figure 12: Refrigerated Truck Availability Monthly Ratings for PNW



Source: AMS Transportation Services Division analysis of AMS Specialty Crops Program Market News data.
 Any gaps in the chart lines are the result of quarters with no reported data for the region.



Arizona

Volume

During fourth quarter 2022, total reported shipments of fruit and vegetables from Arizona were 417,000 tons—flat compared to the same period of 2021. The sum of the top five commodities shipped from Arizona increased 10 percent year to year. Two of the top five commodities saw year-to-year increases in the fourth quarter, including lettuce, processed (up 92 percent), and cantaloupe (up 59 percent). Shipments of broccoli decreased by 38 percent; shipments of lettuce, iceberg, decreased by 13 percent; and shipments of lettuce, romaine, decreased by 9 percent.

Rates

The quarterly average truck rate for shipments between 501 miles and 1,500 miles was \$3.31 per mile—down 41 percent year to year. A quarter-to-quarter analysis was not available because Arizona did not report a third quarter average truck rate for shipments between 501 miles and 1,500 miles.

Truck Overview

Diesel fuel prices averaged \$5.26 per gallon—down 3 percent quarter to quarter and up 34 percent year to year. In November and December, monthly average truck availability was reported as adequate for all Arizona districts. Average truck availability was not reported in October.

Table 18: Reported Top Five Commodities Shipped from Arizona (1,000 tons)

Commodity	4th Quarter 2022	Share of Arizona Total	Previous Quarter	Same Quarter Last Year	Current Quarter as % change from:	
					Previous Qtr	Same Qtr Last Year
Lettuce, Iceberg	106	25%	-	122	-	-13%
Lettuce, Processed	103	25%	-	54	-	92%
Lettuce, Romaine	102	24%	-	111	-	-9%
Cantaloupe	40	10%	26	25	58%	59%
Broccoli	12	3%	-	20	-	-38%
Top 5 Total	364	87%	26	332	1,325%	10%
Arizona Total	417	100%	57	416	624%	< 1%

Source: AMS Transportation Services Division analysis of AMS Specialty Crops Program Market News data.

Any "-" in the table indicates no reported shipments during the quarter or a percentage change with an at- or near-zero denominator.

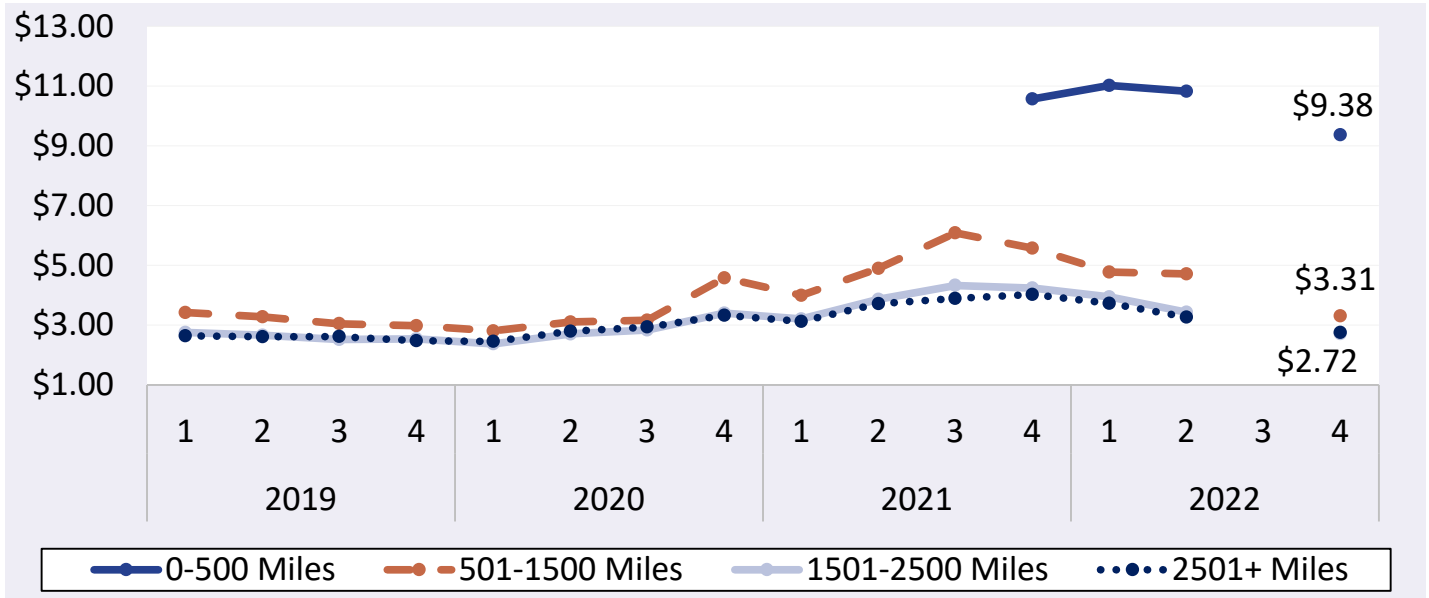
Note: Table values may not conform exactly due to rounding.



AGRICULTURAL REFRIGERATED TRUCK QUARTERLY

Quarter 4, 2022

Figure 13: Arizona Truck Rates (\$/Mile by Distance Travelled)



Source: AMS Transportation Services Division analysis of AMS Specialty Crops Program Market News data. Any gaps in the chart lines are the result of quarters with no reported data for the region.

Table 19: Arizona Truck Overview (Availability Rating: 1=Surplus to 5=Shortage)

Region/Reporting District	October	November	December	4th Quarter
Imperial, Coachella Valleys Ca, Central And Western Az, Mexico Crossings Through Calexico And San Luis	-	3	2.78	2.89
Regional Average Availability	-	3	2.78	2.89
Diesel Fuel Price (\$/gallon)	5.41	5.40	4.98	5.26

Source: AMS Transportation Services Division analysis of AMS Specialty Crops Program Market News data.

Any "-" in the table indicates no reported shipments during the quarter.

Note: Table values may not conform exactly due to rounding.

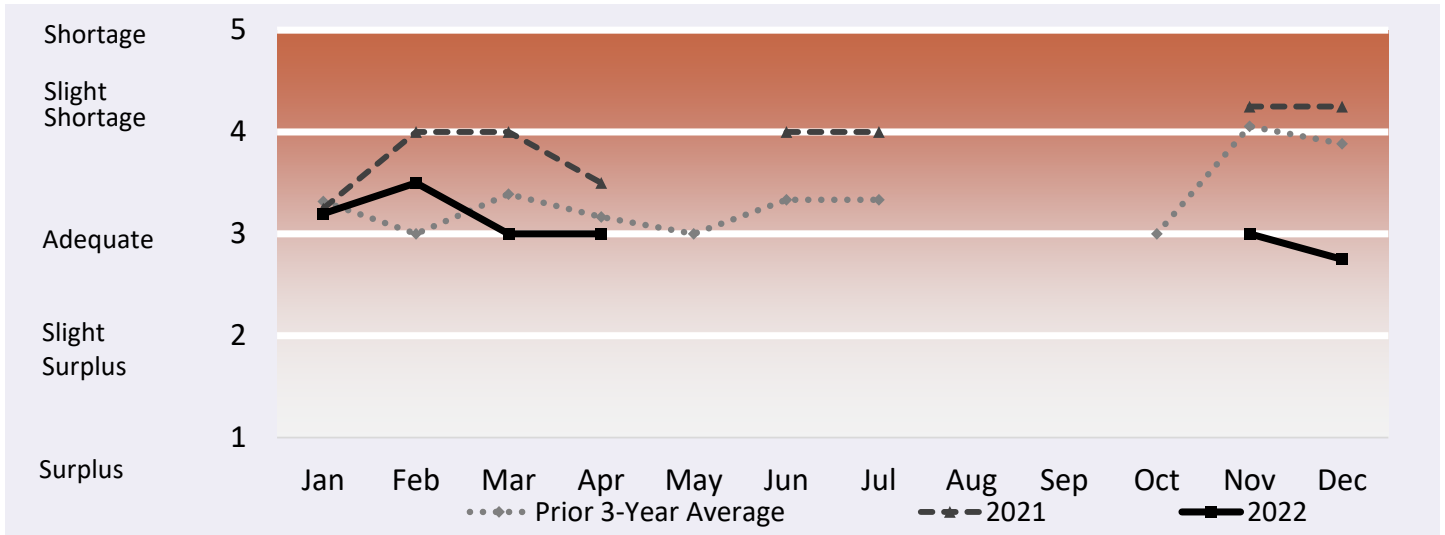
Note: AMS Specialty Crops Program defines regions by commodity, which may overlap in truck availability reporting.



AGRICULTURAL REFRIGERATED TRUCK QUARTERLY

Quarter 4, 2022

Figure 14: Refrigerated Truck Availability Monthly Ratings for Arizona



Source: AMS Transportation Services Division analysis of AMS Specialty Crops Program Market News data.
 Any gaps in the chart lines are the result of quarters with no reported data for the region.



Great Lakes

Volume

Total reported shipments of fruit and vegetables from the Great Lakes in fourth quarter 2022 were 285,000 tons, up 3 percent year to year. The sum of the top five commodities shipped from the Great Lakes increased 7 percent year to year. Four of the top five commodities increased year to year, including cabbage (up 91 percent); apples (up 44 percent); celery (up 12 percent); and onions, dry (up 10 percent). Shipments of potatoes decreased 4 percent.

Rates

The quarterly average truck rate for shipments between 501 miles and 1,500 miles was \$4.21 per mile—down 11 percent quarter to quarter and down 17 percent year to year.

Truck Overview

Diesel fuel prices averaged \$5.03 per gallon—down 3 percent quarter to quarter and up 41 percent year to year. Throughout the quarter, monthly average truck availability was reported as adequate for all Great Lakes districts.

Table 20: Reported Top Five Commodities Shipped from Great Lakes (1,000 tons)

Commodity	4th Quarter 2022	Share of Great Lakes Total	Previous Quarter	Same Quarter Last Year	Current Quarter as % change from:	
					Previous Qtr	Same Qtr Last Year
Potatoes	186	65%	131	194	43%	-4%
Apples	61	21%	9	42	597%	44%
Onions Dry	21	8%	6	19	285%	10%
Cabbage	7	3%	21	4	-65%	91%
Celery	4	1%	12	3	-69%	12%
Top 5 Total	279	98%	177	262	57%	7%
Great Lakes Total	285	100%	315	276	-10%	3%

Source: AMS Transportation Services Division analysis of AMS Specialty Crops Program Market News data.

Any "-" in the table indicates no reported shipments during the quarter or a percentage change with an at- or near-zero denominator.

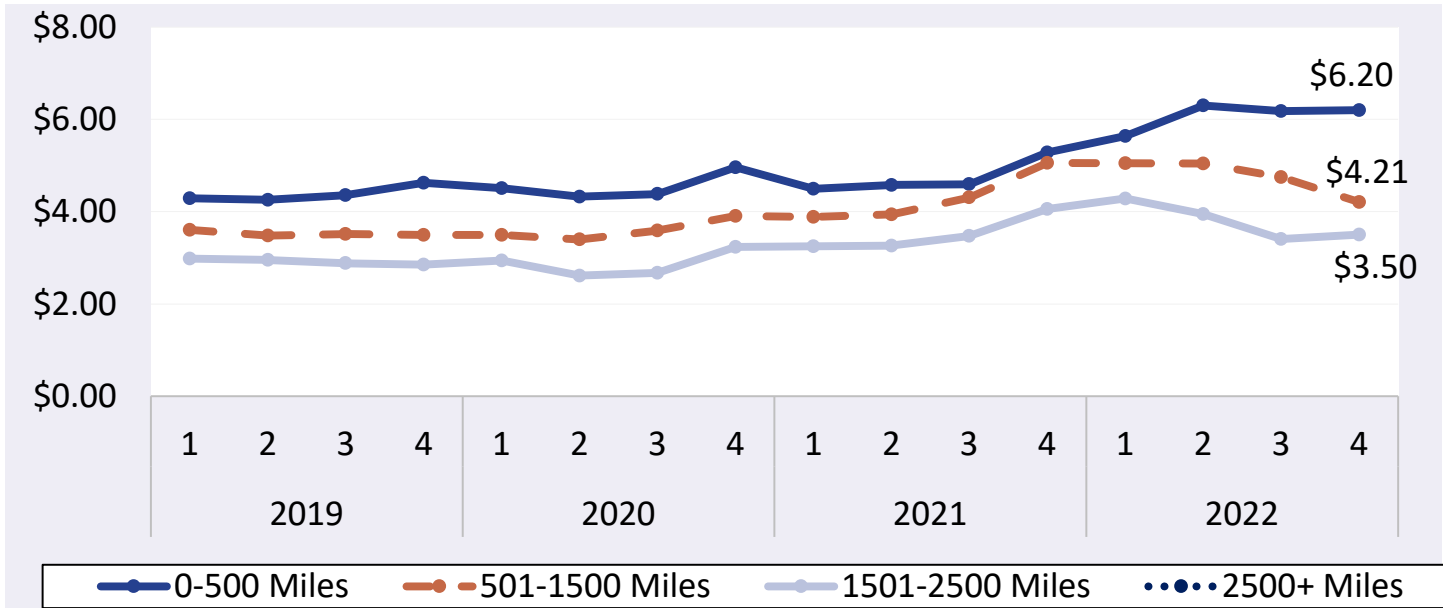
Note: Table values may not conform exactly due to rounding.



AGRICULTURAL REFRIGERATED TRUCK QUARTERLY

Quarter 4, 2022

Figure 15: Great Lakes Truck Rates (\$/Mile by Distance Travelled)



Source: AMS Transportation Services Division analysis of AMS Specialty Crops Program Market News data. Any gaps in the chart lines are the result of quarters with no reported data for the region.

Table 21: Great Lakes Truck Overview (Availability Rating: 1=Surplus to 5=Shortage)

Region/Reporting District	October	November	December	4th Quarter
Central Wisconsin	3	3	3	3
Minnesota-North Dakota (Red River Valley)	-	2.79	3	2.89
Regional Average Availability	3	2.89	3	2.96
Diesel Fuel Price (\$/gallon)	5.23	5.25	4.61	5.03

Source: AMS Transportation Services Division analysis of AMS Specialty Crops Program Market News data.

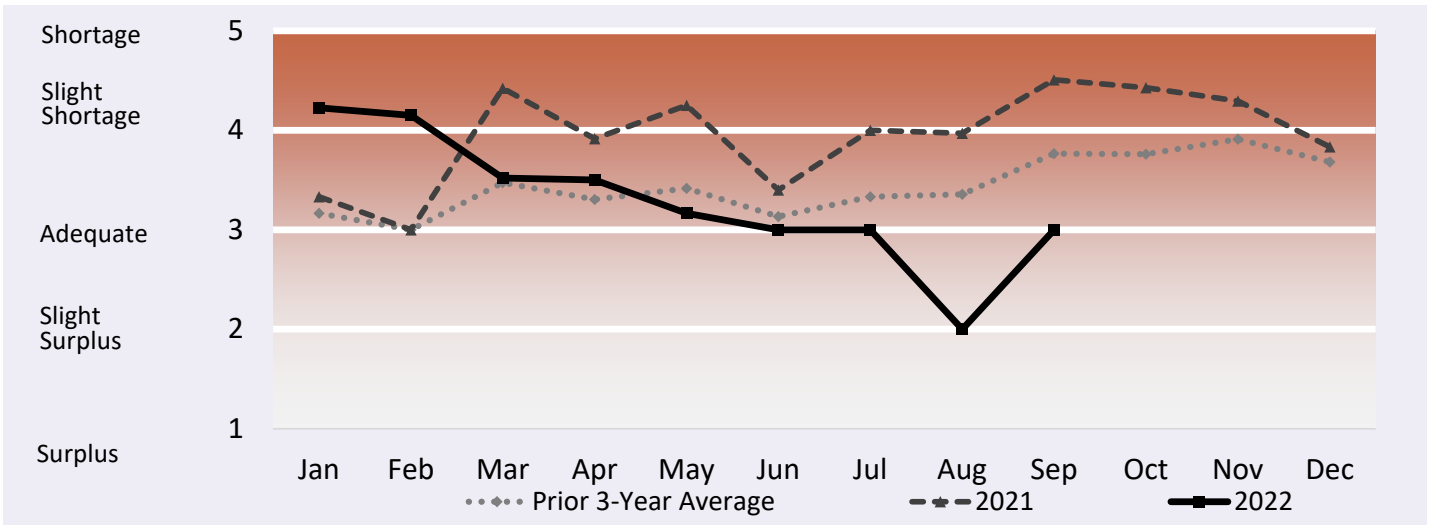
Any "-" in the table indicates no reported shipments during the quarter.

Note: Table values may not conform exactly due to rounding.

Note: AMS Specialty Crops Program defines regions by commodity, which may overlap in truck availability reporting.



Figure 16: Refrigerated Truck Availability Monthly Ratings for Great Lakes



Source: AMS Transportation Services Division analysis of AMS Specialty Crops Program Market News data.
 Any gaps in the chart lines are the result of quarters with no reported data for the region.



ADDITIONAL INFORMATION

Terms and References

Data Reporting and Publication Window

The publication date of each Agricultural Refrigerated Truck Quarterly (AgRTQ) depends on the timing of data reporting. Reporting of truck shipments in some regions can be delayed 2-3 months past their respective quarter. We publish the AgRTQ one month after that lag in order to capture a more complete picture of truck shipments during the quarter.

Data Sources

This information is compiled from the weekly Specialty Crops Truck Rate Report by USDA, Agricultural Marketing Service (AMS), Specialty Crops Program, Market News Division. The website is:

<https://www.marketnews.usda.gov/mnp/fv-home>.

Regional Markets

For the regional markets, some States are grouped into producing regions. The Pacific Northwest region includes Idaho, Oregon, and Washington. The Great Lakes region includes Michigan, Minnesota, and Wisconsin. The Southeast region includes North Carolina, South Carolina and Georgia.

Shipment Volumes

Truck shipments for all commodities and origins are not available. Those obtainable are reported, but should not be interpreted as representing complete movements of a commodity. Truck shipments from all States are collected at shipping points and include both interstate and intrastate movements. They are obtained from various sources, including Federal marketing orders, administrative committees, Federal State Inspection Service, and shippers. Volume amounts are represented in 10,000 pound units, or 1,000 10-lb packages but are converted to 1,000 tons for this report. Mexican border crossings through Arizona and Texas data is obtained from the Department of Homeland Security (DHS), U.S. Customs and Border and Protection (CBP) through USDA, AMS, Market News.

Rates

This information is compiled from the weekly Specialty Crops Truck Rate Report. Rates quoted represent open (spot) market rates that shippers or receivers pay depending on basis of sale, per load, including truck brokers fees for shipments in truck load volume to a single destination. Extra charges for delivery to terminal markets, multipickup and multidrop shipments are not included unless otherwise stated. Rates are based on the most usual loads in 48-53 foot trailers from the origin shipping area to the destination receiving city. In areas where rates are based on package rates, per load rates were derived by multiplying the package rate by the number of packages in the most usual load in a 48-53 foot trailer. Slightly cheaper rates will be reported during Quarters 2 and 3 as about 50 percent of onion shipments from California are hauled on open flatbed trailers. During Quarter 3, less than 20 percent of onions hauled from Washington, Idaho, and Oregon are on open flatbeds.

Regional Rates

Rate data for 10 destination markets are used to calculate average origin regional rates.

National Rates

The national rates reflect the average of the regional rates, separated by mileage category and weighted by volume between origin and destination.



Contact Us

Authors

Kranti Mulik, Coordinator; Analyst

Kranti.Mulik@usda.gov, 202.756.2577

Jesse Gastelle, Analyst

Jesse.Gastelle@usda.gov, 202.690.1144

Alexis Heyman, Analyst

Alexis.Heyman@usda.gov, 847.699.2414

Patty Willkie, Specialty Crops Program and Market News Division Data

Patty.Willkie@usda.gov, 202.720.2175

Please sign up by entering your email address at the following link and selecting your preference to receive Transportation Research and Analysis:

https://public.govdelivery.com/accounts/USDAAMS/subscriber/new?topic_id=USDAAMS_177

For assistance with accessibility issues related to this document, please e-mail SharonC.Williams@usda.gov.

Related Websites

USDA's Agricultural Transportation Open Data Platform

<https://agtransport.usda.gov/>

Specialty Crops Program

<https://www.ams.usda.gov/about-ams/programs-offices/specialty-crops-program>

Specialty Crops Truck Rate Report

https://mymarketnews.ams.usda.gov/filerepo/reports?field_slug_id_value=2375

Specialty Crops Movement Reporting

<https://www.marketnews.usda.gov/mnp/fv-report-config-step1?type=movement>

Economic Research Service Vegetable and Pulses

<https://www.ers.usda.gov/topics/crops/vegetables-pulses/>

Economic Research Service Fruit and Tree Nuts

<https://www.ers.usda.gov/topics/crops/fruit-tree-nuts.aspx>

National Agricultural Statistics Service, Crops

https://www.nass.usda.gov/Statistics_by_Subject/index.php?sector=CROPS

Refrigerated Truck Quarterly Datasets

<https://www.ams.usda.gov/services/transportation-analysis/agricultural-refrigerated-truck-quarterly-datasets>

Protecting Perishable Foods During Transport by Truck and Rail

<https://edis.ifas.ufl.edu/pdf/HS/HS132800.pdf>

Preferred Citation

U.S. Department of Agriculture, Agricultural Marketing Service. *Agricultural Refrigerated Truck Quarterly Report*. March 2023 Web. <<https://dx.doi.org/10.9752/TS051.03-2023>>

Photo Credit

Burt Barnes

USDA is an equal opportunity provider, employer, and lender.

www.ams.usda.gov/services/transportation-analysis/agrtq