

**Table 1**

Prices Per Pound of Protein and Lactose for Selected Dry Products

Source: Dairy Market News

	WPC 34			Dry Whey			Lactose
	<u>Price</u>	<u>Protein parity</u>	<u>Lactose parity</u>	<u>Price</u>	<u>Protein parity</u>	<u>Lactose parity</u>	<u>Price</u>
JAN 00	0.4353	1.2803	0.6595	0.1909	1.4685	0.2194	0.2000
FEB 00	0.4540	1.3353	0.6879	0.1774	1.3646	0.2039	0.2000
MAR 00	0.5173	1.5215	0.7838	0.1738	1.3369	0.1998	0.2000
APR 00	0.5919	1.7409	0.8968	0.1722	1.3246	0.1979	0.2000
MAY 00	0.6700	1.9706	1.0152	0.1714	1.3185	0.1970	0.2000
JUN 00	0.7359	2.1644	1.1150	0.1734	1.3338	0.1993	0.1938
JUL 00	0.7803	2.2950	1.1823	0.1806	1.3892	0.2076	0.1776
AUG 00	0.7697	2.2638	1.1662	0.1838	1.4138	0.2113	0.1720
SEP 00	0.7513	2.2097	1.1383	0.1838	1.4138	0.2113	0.1675
OCT 00	0.7337	2.1579	1.1117	0.1838	1.4138	0.2113	0.1650
NOV 00	0.7325	2.1544	1.1098	0.1896	1.4585	0.2179	0.1650
DEC 00	0.7399	2.1762	1.1211	0.2018	1.5523	0.2320	0.1650
JAN 01	0.7674	2.2571	1.1627	0.2262	1.7400	0.2600	0.1675
FEB 01	0.7870	2.3147	1.1924	0.2338	1.7985	0.2687	0.1675
MAR 01	0.7900	2.3235	1.1970	0.2397	1.8438	0.2755	0.1698
APR 01	0.7950	2.3382	1.2045	0.2511	1.9315	0.2886	0.1783
MAY 01	0.7950	2.3382	1.2045	0.2606	2.0046	0.2995	0.1848
JUN 01	0.7950	2.3382	1.2045	0.2677	2.0592	0.3077	0.1974
JUL 01	0.7893	2.3215	1.1959	0.2701	2.0777	0.3105	0.2075
AUG 01	0.7807	2.2962	1.1829	0.2727	2.0977	0.3134	0.2075
SEP 01	0.7800	2.2941	1.1818	0.2725	2.0962	0.3132	0.2075
OCT 01	0.7673	2.2568	1.1626	0.2738	2.1062	0.3147	0.2175
NOV 01	0.7490	2.2029	1.1348	0.2738	2.1062	0.3147	0.2175
DEC 01	0.7081	2.0826	1.0729	0.2641	2.0315	0.3036	0.2178
JAN 02	0.6663	1.9597	1.0095	0.2378	1.8292	0.2733	0.2225
FEB 02	0.6512	1.9153	0.9867	0.2216	1.7046	0.2547	0.2225
MAR 02	0.6161	1.8121	0.9335	0.2113	1.6254	0.2429	0.2225
APR 02	0.5752	1.6918	0.8715	0.1947	1.4977	0.2238	0.2024
MAY 02	0.5186	1.5253	0.7858	0.1706	1.3123	0.1961	0.1832
JUN 02	0.4688	1.3788	0.7103	0.1538	1.1831	0.1768	0.1750
JUL 02	0.4363	1.2832	0.6611	0.1452	1.1169	0.1669	0.1591
AUG 02	0.4252	1.2506	0.6442	0.1481	1.1392	0.1702	0.1575
SEP 02	0.4461	1.3121	0.6759	0.1646	1.2662	0.1892	0.1583
OCT 02	0.4675	1.3750	0.7083	0.1916	1.4738	0.2202	0.1630
NOV 02	0.5022	1.4771	0.7609	0.2122	1.6323	0.2439	0.1650
DEC 02	0.5125	1.5074	0.7765	0.2163	1.6638	0.2486	0.1652
JAN 03	0.5125	1.5074	0.7765	0.1816	1.3969	0.2087	0.1675
FEB 03	0.5125	1.5074	0.7765	0.1586	1.2200	0.1823	0.1700
MAR 03	0.5086	1.4959	0.7706	0.1525	1.1731	0.1753	0.1701
APR 03	0.4884	1.4365	0.7400	0.1431	1.1008	0.1645	0.1766
MAY 03	0.4530	1.3324	0.6864	0.1355	1.0423	0.1557	0.1786
JUN 03	0.4027	1.1844	0.6102	0.1380	1.0615	0.1586	0.1805
JUL 03	0.4127	1.2138	0.6253	0.1515	1.1654	0.1741	0.1905
AUG 03	0.4467	1.3138	0.6768	0.1717	1.3208	0.1974	0.1949
SEP 03	0.4827	1.4197	0.7314	0.1836	1.4123	0.2110	0.2010
OCT 03	0.5216	1.5341	0.7903	0.1931	1.4854	0.2220	0.2125
NOV 03	0.5522	1.6241	0.8367	0.1947	1.4977	0.2238	0.2125
DEC 03	0.5568	1.6376	0.8436	0.1818	1.3985	0.2090	0.2142
JAN 04	0.5311	1.5621	0.8047	0.1686	1.2969	0.1938	0.2250
FEB 04	0.4746	1.3959	0.7191	0.1620	1.2462	0.1862	0.2250

**Table 1**

Prices Per Pound of Protein and Lactose for Selected Dry Products

Source: Dairy Market News

	WPC 34			Dry Whey			Lactose
	Price	Protein parity	Lactose parity	Price	Protein parity	Lactose parity	Price
MAR 04	0.4599	1.3526	0.6968	0.1821	1.4008	0.2093	0.2266
APR 04	0.5505	1.6191	0.8341	0.2335	1.7962	0.2684	0.2375
MAY 04	0.6381	1.8768	0.9668	0.2681	2.0623	0.3082	0.2375
JUN 04	0.6550	1.9265	0.9924	0.2628	2.0215	0.3021	0.2375
JUL 04	0.6516	1.9165	0.9873	0.2308	1.7754	0.2653	0.2290
AUG 04	0.6233	1.8332	0.9444	0.2158	1.6600	0.2480	0.2175
SEP 04	0.6108	1.7965	0.9255	0.2186	1.6815	0.2513	0.2007
OCT 04	0.6100	1.7941	0.9242	0.2294	1.7646	0.2637	0.1878
NOV 04	0.6141	1.8062	0.9305	0.2430	1.8692	0.2793	0.1850
DEC 04	0.6392	1.8800	0.9685	0.2536	1.9508	0.2915	0.1850
JAN 05	0.7033	2.0685	1.0656	0.2597	1.9977	0.2985	0.1750
FEB 05	0.7509	2.2085	1.1377	0.2634	2.0262	0.3028	0.1750
MAR 05	0.7816	2.2988	1.1842	0.2708	2.0831	0.3113	0.1750
APR 05	0.8195	2.4103	1.2417	0.2791	2.1469	0.3208	0.1798
MAY 05	0.8598	2.5288	1.3027	0.2877	2.2131	0.3307	0.1809
JUN 05	0.8907	2.6197	1.3495	0.2969	2.2838	0.3413	0.1884
JUL 05	0.9075	2.6691	1.3750	0.3074	2.3646	0.3533	0.1995
AUG 05	0.8956	2.6341	1.3570	0.3107	2.3900	0.3571	0.2003
SEP 05	0.8587	2.5256	1.3011	0.3205	2.4654	0.3684	0.2043
OCT 05	0.8523	2.5068	1.2914	0.3224	2.4800	0.3706	0.2153
NOV 05	0.8416	2.4753	1.2752	0.3298	2.5369	0.3791	0.2195
DEC 05	0.8186	2.4076	1.2403	0.3403	2.6177	0.3911	0.2200
JAN 06	0.7943	2.3362	1.2035	0.3491	2.6854	0.4013	0.2363
FEB 06	0.7482	2.2006	1.1336	0.3508	2.6985	0.4032	0.2425
MAR 06	0.6864	2.0188	1.0400	0.3336	2.5662	0.3834	0.2430
APR 06	0.6200	1.8235	0.9394	0.3084	2.3723	0.3545	0.2600
MAY 06	0.5953	1.7509	0.9020	0.2997	2.3054	0.3445	0.2705
JUN 06	0.5800	1.7059	0.8788	0.2900	2.2308	0.3333	0.2847
JUL 06	0.5858	1.7229	0.8876	0.2922	2.2477	0.3359	0.3290
AUG 06	0.6100	1.7941	0.9242	0.3049	2.3454	0.3505	0.3389
SEP 06	0.6626	1.9488	1.0039	0.3298	2.5369	0.3791	0.3620
OCT 06	0.7453	2.1921	1.1292	0.3640	2.8000	0.4184	0.4188
NOV 06	0.8182	2.4065	1.2397	0.4043	3.1100	0.4647	0.4295
DEC 06	0.8698	2.5582	1.3179	0.4406	3.3892	0.5064	0.4350
JAN 07	0.9958	2.9288	1.5088	0.5046	3.8815	0.5800	0.5505
<u>FEB 07</u>	<u>1.1751</u>	<u>3.4562</u>	<u>1.7805</u>	<u>0.5895</u>	<u>4.5346</u>	<u>0.6776</u>	<u>0.5934</u>
Avg.	0.6614	1.9452	1.0021	0.2437	1.8748	0.2801	0.2201

**Table 2**

Prices Per Pound of Protein and Lactose for Selected Dry Products

Source: Dairy Market News

	Dry Buttermilk		Nonfat Dry Milk		WPC 34		Dry Whey	
	Price	Protein parity	Price	Protein parity	Price	Protein parity	Price	Protein parity
JAN 00	0.6513	1.9156	1.0050	2.9559	0.4353	1.2803	0.1909	1.4685
FEB 00	0.6070	1.7853	1.0050	2.9559	0.4540	1.3353	0.1774	1.3646
MAR 00	0.6267	1.8432	1.0050	2.9559	0.5173	1.5215	0.1738	1.3369
APR 00	0.6975	2.0515	1.0050	2.9559	0.5919	1.7409	0.1722	1.3246
MAY 00	0.7518	2.2112	1.0050	2.9559	0.6700	1.9706	0.1714	1.3185
JUN 00	0.8495	2.4985	1.0050	2.9559	0.7359	2.1644	0.1734	1.3338
JUL 00	0.8870	2.6088	1.0050	2.9559	0.7803	2.2950	0.1806	1.3892
AUG 00	0.8978	2.6406	1.0050	2.9559	0.7697	2.2638	0.1838	1.4138
SEP 00	0.9318	2.7406	1.0063	2.9597	0.7513	2.2097	0.1838	1.4138
OCT 00	0.9533	2.8038	1.0075	2.9632	0.7337	2.1579	0.1838	1.4138
NOV 00	0.9640	2.8353	1.0075	2.9632	0.7325	2.1544	0.1896	1.4585
DEC 00	0.9755	2.8691	1.0086	2.9665	0.7399	2.1762	0.2018	1.5523
JAN 01	0.9850	2.8971	1.0100	2.9706	0.7674	2.2571	0.2262	1.7400
FEB 01	0.9842	2.8947	1.0100	2.9706	0.7870	2.3147	0.2338	1.7985
MAR 01	0.9834	2.8924	1.0100	2.9706	0.7900	2.3235	0.2397	1.8438
APR 01	1.0102	2.9712	1.0101	2.9709	0.7950	2.3382	0.2511	1.9315
MAY 01	1.0477	3.0815	1.0118	2.9759	0.7950	2.3382	0.2606	2.0046
JUN 01	1.0621	3.1238	1.0026	2.9488	0.7950	2.3382	0.2677	2.0592
JUL 01	1.0631	3.1268	0.9550	2.8088	0.7893	2.3215	0.2701	2.0777
AUG 01	1.0363	3.0479	0.9422	2.7712	0.7807	2.2962	0.2727	2.0977
SEP 01	1.0429	3.0674	0.9413	2.7685	0.7800	2.2941	0.2725	2.0962
OCT 01	1.0450	3.0735	0.9433	2.7744	0.7673	2.2568	0.2738	2.1062
NOV 01	1.0450	3.0735	0.9235	2.7162	0.7490	2.2029	0.2738	2.1062
DEC 01	1.0375	3.0515	0.9184	2.7012	0.7081	2.0826	0.2641	2.0315
JAN 02	1.0221	3.0062	0.9123	2.6832	0.6663	1.9597	0.2378	1.8292
FEB 02	0.9616	2.8282	0.9105	2.6779	0.6512	1.9153	0.2216	1.7046
MAR 02	0.9060	2.6647	0.9069	2.6674	0.6161	1.8121	0.2113	1.6254
APR 02	0.8852	2.6035	0.9020	2.6529	0.5752	1.6918	0.1947	1.4977
MAY 02	0.8518	2.5053	0.8965	2.6368	0.5186	1.5253	0.1706	1.3123
JUN 02	0.8025	2.3603	0.8963	2.6362	0.4688	1.3788	0.1538	1.1831
JUL 02	0.7497	2.2050	0.8993	2.6450	0.4363	1.2832	0.1452	1.1169
AUG 02	0.7341	2.1591	0.9025	2.6544	0.4252	1.2506	0.1481	1.1392
SEP 02	0.7378	2.1700	0.9051	2.6621	0.4461	1.3121	0.1646	1.2662
OCT 02	0.7500	2.2059	0.9063	2.6656	0.4675	1.3750	0.1916	1.4738
NOV 02	0.7574	2.2276	0.9098	2.6759	0.5022	1.4771	0.2122	1.6323
DEC 02	0.7729	2.2732	0.8600	2.5294	0.5125	1.5074	0.2163	1.6638
JAN 03	0.7429	2.1850	0.8148	2.3965	0.5125	1.5074	0.1816	1.3969
FEB 03	0.7300	2.1471	0.8068	2.3729	0.5125	1.5074	0.1586	1.2200
MAR 03	0.7298	2.1465	0.8037	2.3638	0.5086	1.4959	0.1525	1.1731
APR 03	0.7150	2.1029	0.8023	2.3597	0.4884	1.4365	0.1431	1.1008
MAY 03	0.6948	2.0435	0.8013	2.3568	0.4530	1.3324	0.1355	1.0423
JUN 03	0.6783	1.9950	0.8013	2.3568	0.4027	1.1844	0.1380	1.0615
JUL 03	0.7248	2.1318	0.8015	2.3574	0.4127	1.2138	0.1515	1.1654
AUG 03	0.8120	2.3882	0.8079	2.3762	0.4467	1.3138	0.1717	1.3208
SEP 03	0.8386	2.4665	0.8075	2.3750	0.4827	1.4197	0.1836	1.4123
OCT 03	0.8486	2.4959	0.8075	2.3750	0.5216	1.5341	0.1931	1.4854
NOV 03	0.8550	2.5147	0.8075	2.3750	0.5522	1.6241	0.1947	1.4977
DEC 03	0.8577	2.5226	0.8088	2.3788	0.5568	1.6376	0.1818	1.3985
JAN 04	0.8600	2.5294	0.8034	2.3629	0.5311	1.5621	0.1686	1.2969
FEB 04	0.8813	2.5921	0.8025	2.3603	0.4746	1.3959	0.1620	1.2462

**Table 2**

Prices Per Pound of Protein and Lactose for Selected Dry Products

Source: Dairy Market News

	Dry Buttermilk		Nonfat Dry Milk		WPC 34		Dry Whey	
	Price	Protein parity	Price	Protein parity	Price	Protein parity	Price	Protein parity
MAR 04	0.9072	2.6682	0.8063	2.3715	0.4599	1.3526	0.1821	1.4008
APR 04	0.9482	2.7888	0.8201	2.4121	0.5505	1.6191	0.2335	1.7962
MAY 04	1.0094	2.9688	0.8513	2.5038	0.6381	1.8768	0.2681	2.0623
JUN 04	1.0350	3.0441	0.8500	2.5000	0.6550	1.9265	0.2628	2.0215
JUL 04	1.0350	3.0441	0.8443	2.4832	0.6516	1.9165	0.2308	1.7754
AUG 04	1.0377	3.0521	0.8411	2.4738	0.6233	1.8332	0.2158	1.6600
SEP 04	1.0400	3.0588	0.8421	2.4768	0.6108	1.7965	0.2186	1.6815
OCT 04	1.0400	3.0588	0.8376	2.4635	0.6100	1.7941	0.2294	1.7646
NOV 04	1.0350	3.0441	0.8456	2.4871	0.6141	1.8062	0.2430	1.8692
DEC 04	0.9280	2.7294	0.8782	2.5829	0.6392	1.8800	0.2536	1.9508
JAN 05	0.9053	2.6626	0.8945	2.6309	0.7033	2.0685	0.2597	1.9977
FEB 05	0.9172	2.6976	0.9180	2.7000	0.7509	2.2085	0.2634	2.0262
MAR 05	0.9408	2.7671	0.9268	2.7259	0.7816	2.2988	0.2708	2.0831
APR 05	0.9443	2.7774	0.9385	2.7603	0.8195	2.4103	0.2791	2.1469
MAY 05	0.9092	2.6741	0.9471	2.7856	0.8598	2.5288	0.2877	2.2131
JUN 05	0.9023	2.6538	0.9367	2.7550	0.8907	2.6197	0.2969	2.2838
JUL 05	0.9063	2.6656	0.9319	2.7409	0.9075	2.6691	0.3074	2.3646
AUG 05	0.9176	2.6988	0.9486	2.7900	0.8956	2.6341	0.3107	2.3900
SEP 05	0.9264	2.7247	0.9646	2.8371	0.8587	2.5256	0.3205	2.4654
OCT 05	0.9200	2.7059	0.9848	2.8965	0.8523	2.5068	0.3224	2.4800
NOV 05	0.9200	2.7059	1.0015	2.9456	0.8416	2.4753	0.3298	2.5369
DEC 05	0.9120	2.6824	0.9899	2.9115	0.8186	2.4076	0.3403	2.6177
JAN 06	0.8573	2.5215	0.9518	2.7994	0.7943	2.3362	0.3491	2.6854
FEB 06	0.8111	2.3856	0.8707	2.5609	0.7482	2.2006	0.3508	2.6985
MAR 06	0.7485	2.2015	0.8222	2.4182	0.6864	2.0188	0.3336	2.5662
APR 06	0.6600	1.9412	0.8100	2.3824	0.6200	1.8235	0.3084	2.3723
MAY 06	0.6452	1.8976	0.8086	2.3782	0.5953	1.7509	0.2997	2.3054
JUN 06	0.6407	1.8844	0.8109	2.3850	0.5800	1.7059	0.2900	2.2308
JUL 06	0.7293	2.1450	0.8228	2.4200	0.5858	1.7229	0.2922	2.2477
AUG 06	0.8107	2.3844	0.8692	2.5565	0.6100	1.7941	0.3049	2.3454
SEP 06	0.8825	2.5956	0.9168	2.6965	0.6626	1.9488	0.3298	2.5369
OCT 06	0.9167	2.6962	0.9649	2.8379	0.7453	2.1921	0.3640	2.8000
NOV 06	0.9660	2.8412	1.0057	2.9579	0.8182	2.4065	0.4043	3.1100
DEC 06	1.0058	2.9582	1.0523	3.0950	0.8698	2.5582	0.4406	3.3892
JAN 07	1.0830	3.1853	1.1268	3.3141	0.9958	2.9288	0.5046	3.8815
FEB 07	<u>1.2601</u>	<u>3.7062</u>	<u>1.2357</u>	<u>3.6344</u>	<u>1.1751</u>	<u>3.4562</u>	<u>0.5895</u>	<u>4.5346</u>
Avg.	0.8848	2.6022	0.9151	2.6915	0.6614	1.9452	0.2437	1.8748

**Table 3**

Annual Production of Dry Products

Source: Brian W. Gould, University of Wisconsin-Madison

[http://www.aae.wisc.edu/future/front\\_production.htm](http://www.aae.wisc.edu/future/front_production.htm)

Year	<u>Dry Whey</u>	<i>Estimated lbs.</i> <u>Protein (13%)</u>	<u>WPC (25%-49.9%)</u>	<i>Estimated lbs.</i> <u>Protein (34%)</u>	<u>WPC (50%-89.9%)</u>	<i>Estimated lbs.</i> <u>Protein (70%)</u>	<u>Whey Protein Isolates</u>	<i>Estimated lbs.</i> <u>Protein (90%)</u>	<i>Total Pounds Protein</i> <u>In WPCs &amp; WPI</u>	<u>Lactose</u> <u>Volume</u>
2003	1,076.42	139.93	272.04	92.49	85.91	60.13	22.33	20.10	172.73	613.91
2004	1,034.90	134.54	271.75	92.40	84.10	58.87	27.68	24.91	176.18	665.62
2005	1,045.82	135.96	274.02	93.17	99.94	69.95	34.46	31.01	194.13	668.12
2006	1,093.08	142.10	290.98	98.93	121.21	84.85	32.06	28.85	212.63	698.55

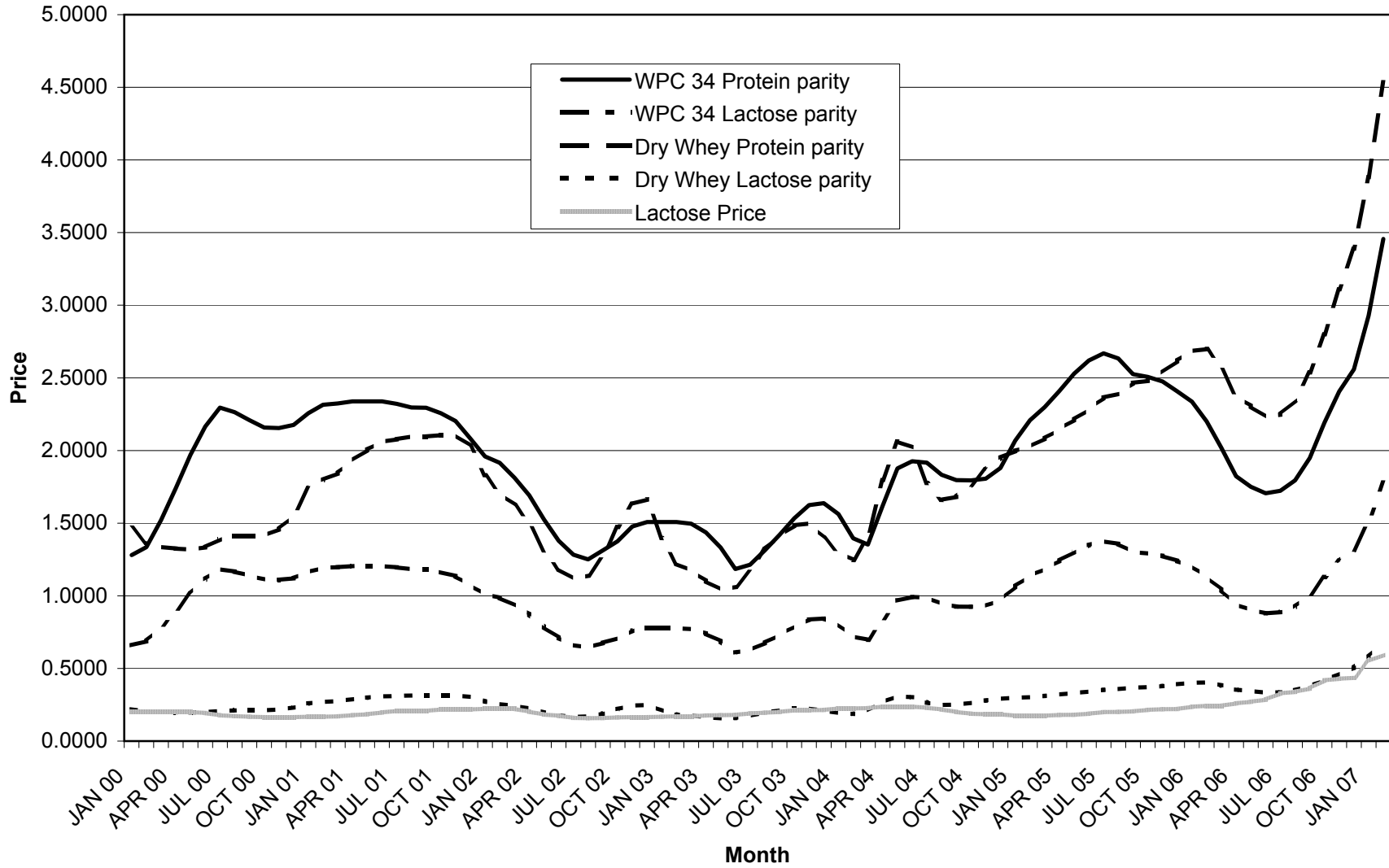
Production data is in million pounds

**Table 4**Contribution of Whey to Class III Price  
(Actual FMMO Component Tests)

Month	Current Formula				Proposed Formula				Value chg
	Whey price	OS price	OS test	Whey Value/cwt	Whey Protein Price	Protein test	Whey Value/cwt		
Apr 03	0.1582	-0.00082	5.73	-0.0047	-0.0016	3.00	-0.0047	0.0000	
May 03	0.1450	-0.01442	5.73	-0.0826	-0.0274	2.97	-0.0815	0.0011	
Jun 03	0.1396	-0.01998	5.73	-0.1145	-0.0380	2.96	-0.1126	0.0019	
Jul 03	0.1470	-0.01236	5.69	-0.0703	-0.0235	2.92	-0.0687	0.0017	
Aug 03	0.1615	0.00258	5.68	0.0146	0.0049	2.93	0.0144	-0.0003	
Sep 03	0.1755	0.01700	5.68	0.0965	0.0323	3.02	0.0977	0.0011	
Oct 03	0.1892	0.03111	5.67	0.1764	0.0592	3.10	0.1835	0.0071	
Nov 03	0.1947	0.03677	5.69	0.2092	0.0700	3.12	0.2183	0.0091	
Dec 03	0.1941	0.03615	5.70	0.2061	0.0688	3.11	0.2140	0.0079	
<b>2003 average</b>	<b>0.1672</b>	<b>0.0084</b>	<b>5.70</b>	<b>0.0479</b>	<b>0.0161</b>	<b>3.0144</b>	<b>0.0512</b>	<b>0.0033</b>	
Jan 04	0.1801	0.02173	5.70	0.1239	0.0414	3.09	0.1278	0.0039	
Feb 04	0.1677	0.00896	5.69	0.0510	0.0171	3.07	0.0523	0.0014	
Mar 04	0.1817	0.02338	5.70	0.1333	0.0445	3.05	0.1357	0.0024	
Apr 04	0.2602	0.10424	5.71	0.5952	0.1984	3.02	0.5990	0.0038	
May 04	0.2992	0.14441	5.71	0.8246	0.2748	2.98	0.8189	-0.0057	
Jun 04	0.2890	0.13390	5.71	0.7646	0.2548	2.96	0.7542	-0.0104	
Jul 04	0.2607	0.10475	5.70	0.5971	0.1993	2.95	0.5880	-0.0091	
Aug 04	0.2246	0.06757	5.70	0.3851	0.1286	2.99	0.3844	-0.0007	
Sep 04	0.2162	0.05892	5.68	0.3346	0.1121	3.03	0.3397	0.0051	
Oct 04	0.2247	0.06767	5.68	0.3844	0.1288	3.11	0.4005	0.0161	
Nov 04	0.2367	0.08003	5.68	0.4546	0.1523	3.13	0.4767	0.0221	
Dec 04	0.2423	0.08580	5.68	0.4873	0.1633	3.11	0.5078	0.0204	
<b>2004 average</b>	<b>0.2319</b>	<b>0.0751</b>	<b>5.695</b>	<b>0.4280</b>	<b>0.1429</b>	<b>3.0408</b>	<b>0.4321</b>	<b>0.0041</b>	
Jan 05	0.2463	0.08992	5.69	0.5116	0.1711	3.08	0.5270	0.0154	
Feb 05	0.2478	0.09146	5.70	0.5213	0.1740	3.06	0.5326	0.0112	
Mar 05	0.2513	0.09507	5.72	0.5438	0.1809	3.04	0.5500	0.0062	
Apr 05	0.2580	0.10197	5.72	0.5833	0.1940	3.01	0.5841	0.0008	
May 05	0.2603	0.10434	5.73	0.5979	0.1985	3.00	0.5956	-0.0022	
Jun 05	0.2696	0.11392	5.73	0.6528	0.2168	2.93	0.6352	-0.0176	
Jul 05	0.2794	0.12401	5.72	0.7093	0.2360	2.91	0.6867	-0.0226	
Aug 05	0.2869	0.13174	5.70	0.7509	0.2507	2.95	0.7395	-0.0114	
Sep 05	0.2960	0.14111	5.69	0.8029	0.2685	3.03	0.8136	0.0107	
Oct 05	0.3038	0.14914	5.69	0.8486	0.2838	3.11	0.8826	0.0340	
Nov 05	0.3149	0.16058	5.70	0.9153	0.3056	3.14	0.9595	0.0442	
Dec 05	0.3242	0.17016	5.69	0.9682	0.3238	3.14	1.0167	0.0485	
<b>2005 average</b>	<b>0.2782</b>	<b>0.1228</b>	<b>5.7067</b>	<b>0.7005</b>	<b>0.2336</b>	<b>3.0333</b>	<b>0.7103</b>	<b>0.0098</b>	
Jan 06	0.3416	0.18808	5.72	1.0758	0.3579	3.07	1.0987	0.0229	
Feb 06	0.3531	0.19992	5.73	1.1456	0.3804	3.07	1.1679	0.0224	
Mar 06	0.3409	0.18736	5.73	1.0736	0.3565	3.06	1.0910	0.0174	
Apr 06	0.3054	0.15079	5.72	0.8625	0.2869	3.02	0.8666	0.0040	
May 06	0.2805	0.12515	5.74	0.7183	0.2381	3.01	0.7168	-0.0015	
Jun 06	0.2808	0.12545	5.71	0.7163	0.2387	2.97	0.7090	-0.0073	
Jul 06	0.2810	0.12566	5.71	0.7175	0.2391	2.94	0.7030	-0.0145	
Aug 06	0.2965	0.14163	5.70	0.8073	0.2695	2.97	0.8004	-0.0068	
Sep 06	0.3191	0.16490	5.69	0.9383	0.3138	3.06	0.9602	0.0219	
Oct 06	0.3557	0.20260	5.70	1.1548	0.3855	3.13	1.2067	0.0519	
Nov 06	0.3800	0.22763	5.69	1.2952	0.4332	3.14	1.3601	0.0649	
Dec 06	0.4079	0.25637	5.69	1.4587	0.4878	3.12	1.5221	0.0633	
<b>2006 average</b>	<b>0.3285</b>	<b>0.1672</b>	<b>5.7108</b>	<b>0.9550</b>	<b>0.3182</b>	<b>3.0467</b>	<b>0.9710</b>	<b>0.0159</b>	
Jan 07	0.4680	0.31827	5.71	1.8173	0.6056	3.09	1.8714	0.0541	

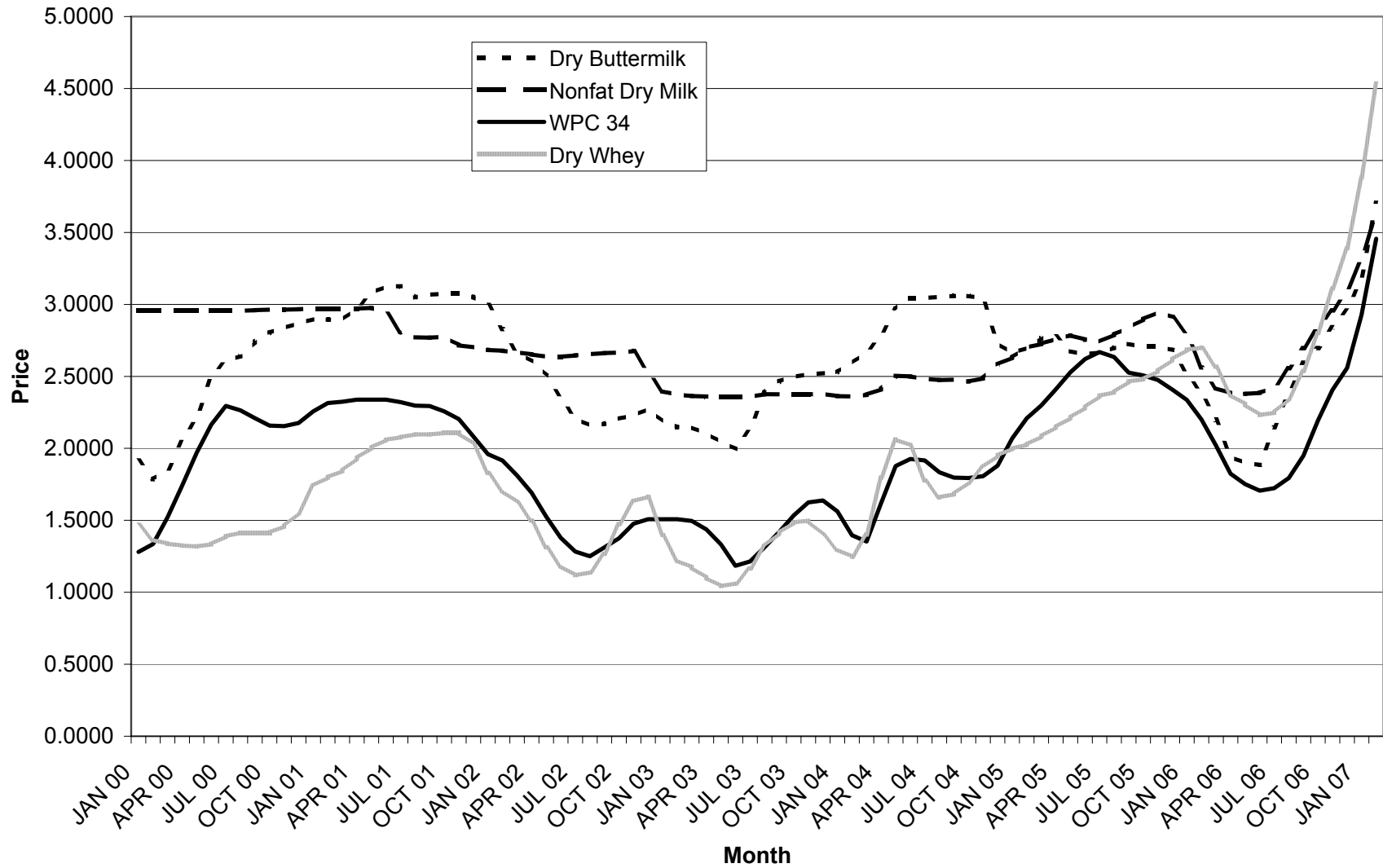
**Graph 1**

**WPC 34 and Dry Whey Protein and Lactose Parities**



**Graph 2**

**Dry Products Protein Parity**





**Graph 3**

**Total Protein Pounds in Dry Whey and Concentrated Products**

